

STATE OF ILLINOIS  
DEPARTMENT OF TRANSPORTATION

VAR. RITE.	SECTION	COUNTY	TOTAL SHEETS	SHEET NO.
	IL 137 22 BP	LAKE	25	1
		ILLINOIS	CONTRACT NO. 62U17	

FOR INDEX OF SHEETS, SEE SHEET NO. 2

# PROPOSED HIGHWAY PLANS

F.A.P. ROUTE 346 & F.A.P. ROUTE 352: US 41 & ILL 137  
VARIOUS BRIDGES IN DISTRICT ONE  
PROJECT: NHPP-PKGG(021)  
SECTION: IL 137 22 BP  
BRIDGE PAINTING  
LAKE COUNTY

C-91-016-23

**TRAFFIC DATA**

2021 ADT  
US ROUTE 41 = 23,000  
ILLINOIS ROUTE 137 = 14,600

2019 ADT  
24TH STREET = 925

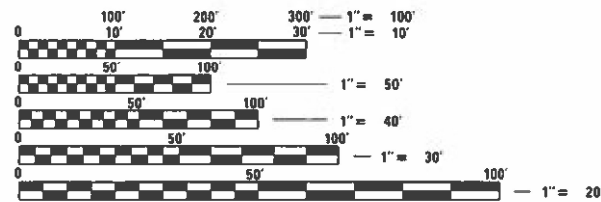
**POSTED SPEED LIMIT**

US ROUTE 41 = 55 MPH  
ILLINOIS ROUTE 137 = 50 MPH  
24TH STREET = 40 MPH

IMPROVEMENT LOCATION 1:  
US 41  
OVER MILL CREEK  
STRUCTURE NO.: 049-0028  
VILLAGE OF WADSWORTH

IMPROVEMENT LOCATION 3:  
WASHINGTON STREET  
OVER IL 137 (LAKE FRONT FWY)  
STRUCTURE NO.: 049-0164  
CITY OF WAUKEGAN

IMPROVEMENT LOCATION 2:  
IL 137 (LAKE FRONT FWY)  
OVER 24TH STREET  
STRUCTURE NO.: 049-0163  
CITY OF NORTH CHICAGO

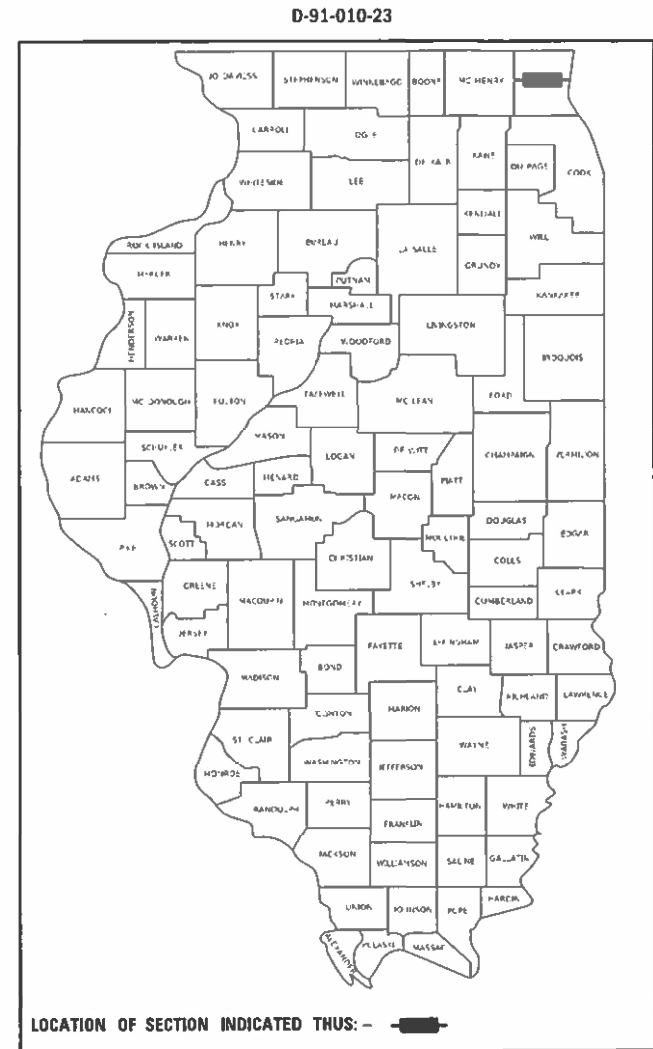
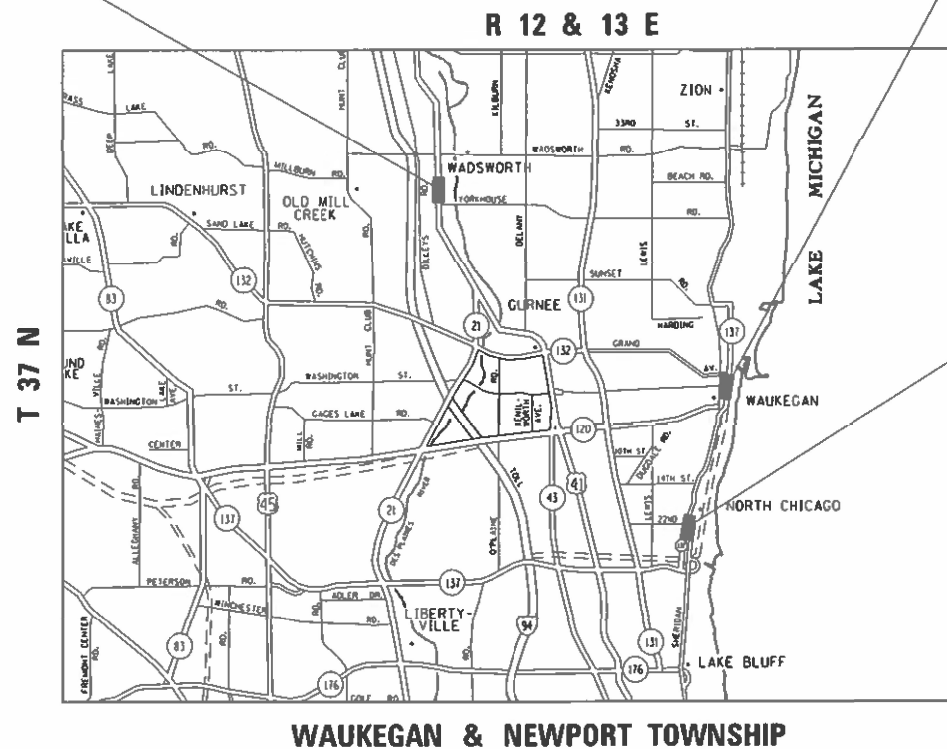


FULL SIZE PLANS HAVE BEEN PREPARED USING STANDARD ENGINEERING SCALES. REDUCED SIZED PLANS WILL NOT CONFORM TO STANDARD SCALES. IN MAKING MEASUREMENTS ON REDUCED PLANS, THE ABOVE SCALES MAY BE USED.

J.U.L.I.E.  
JOINT UTILITY LOCATION INFORMATION FOR EXCAVATORS  
1-800-892-0123  
OR 811

PROJECT ENGINEER: RODRIGO LEDEZMA (847)705-4580  
PROJECT MANAGER: JEAN ALAIN MIDY (847)221-3056

CONTRACT NO. 62U17



STATE OF ILLINOIS  
DEPARTMENT OF TRANSPORTATION

SUBMITTED March 17, 2023  
Jose Rivero REGIONAL ENGINEER  
May 12, 2023  
J.A. Etk  
ENGINEER OF DESIGN AND ENVIRONMENT  
May 12, 2023  
Stephen McAnis  
DIRECTOR OF HIGHWAYS PROJECT IMPLEMENTATION

PRINTED BY THE AUTHORITY  
OF THE STATE OF ILLINOIS

## INDEX OF SHEETS

1	COVER SHEET
2	INDEX OF SHEETS, STATE STANDARDS AND GENERAL NOTES
3	SUMMARY OF QUANTITIES
4	DETOUR SIGNING PLAN
5-9	MAINTENANCE OF TRAFFIC PLANS
10-12	LOCATION 1: EXISTING BRIDGE PLANS (SN 049-0028)
13-16	LOCATION 2: EXISTING BRIDGE PLANS (SN 049-0163)
17-20	LOCATION 3: EXISTING BRIDGE PLANS (SN 049-0164)
21	ENTRANCE AND EXIT RAMP CLOSURE DETAILS (TC-08)
22	TRAFFIC CONTROL AND PROTECTION FOR SIDE ROADS, INTERSECTIONS, AND DRIVEWAYS (TC-10)
23	DISTRICT ONE TYPICAL PAVEMENT MARKINGS (TC-13)
24	DETOUR SIGNING FOR COSING STATE HIGHWAYS (TC-21)
25	ARTERIAL ROAD INFORMATION SIGN (TC-22)

## STATE STANDARDS

<u>STANDARD NO.</u>	<u>DESCRIPTION</u>
701101-05	OFF-ROAD OPERATIONS, MULTILANE, 15' TO 24" FROM PAVEMENT EDGE
701106-02	OFF-ROAD OPERATIONS, MULTILANE, MORE THAN 15' (4.5 M) AWAY
701311-03	APPROACH TO LANE CLOSURE, FREEWAY/EXPRESSWAY
701411-09	LANE CLOSURE, MULTILANE, AT ENTRANCE OR EXIT RAMP FOR SPEEDS > 45MPH
701421-08	LANE CLOSURE, MULTILANE, DAY OPERATIONS ONLY, FOR SPEEDS ≥ 45 MPH TO 55 MPH
701423-10	LANE CLOSURE, MULTILANE, WITH BARRIER, FOR SPEEDS ≥ 45 MPH TO 55 MPH
701426-09	LANE CLOSURE, MULTILANE, INTERMITTENT OR MOVING OPER., FOR SPEEDS ≥ 45 MPH
701427-05	LANE CLOSURE, MULTILANE, INTERMITTENT OR MOVING OPER., FOR SPEEDS < 40 MPH
701701-10	URBAN LANE CLOSURE, MULTILANE INTERSECTION
701901-08	TRAFFIC CONTROL DEVICES

## GENERAL NOTES

1. BEFORE STARTING ANY EXCAVATION, THE CONTRACTOR SHALL CALL "J.U.L.I.E." AT (800) 892-0123 OR 811 FOR FIELD LOCATIONS OF BURIED ELECTRIC, TELEPHONE AND GAS UTILITIES. 48 HOUR NOTIFICATION IS REQUIRED.
2. THE CONTRACTOR SHALL COORDINATE CONSTRUCTION ACTIVITIES WITH UTILITY COMPANIES, VILLAGE OF WADSWORTH, CITY OF WAUKEGAN AND CITY OF NORTH CHICAGO.
3. IT SHALL BE THE CONTRACTOR'S RESPONSIBILITY TO VERIFY ALL DIMENSIONS AND CONDITIONS EXISTING IN THE FIELD PRIOR TO CONSTRUCTION AND ORDERING OF MATERIALS.
4. THE CONTRACTOR WILL NOT BE ALLOWED TO SET UP A YARD OR FIELD OFFICE ON STATE (OR TOLLWAY) PROPERTY WITHOUT WRITTEN PERMISSION FROM THE DEPARTMENT (OR ISTHA).
5. THE CONTRACTOR SHALL CONTACT THE DISTRICT ONE TRAFFIC CONTROL SUPERVISOR AT KALPANA.KANNAN-HOSADURGA@ILLINOIS.GOV A MINIMUM OF 72 HOURS IN ADVANCE OF BEGINNING WORK.
6. IT SHALL BE THE CONTRACTOR'S RESPONSIBILITY TO PROTECT AND MAINTAIN THE EXISTING BRIDGE LIGHTING AT ANY LOCATIONS THAT LIGHTING IS ENCOUNTERED ADJACENT TO AN AREA TO BE CLEANED AND PAINTED.
7. THE CONTRACTOR SHALL BE REQUIRED TO PROVIDE ACCESS TO ABUTTING PROPERTY AT ALL TIMES DURING THE CONSTRUCTION OF THIS PROJECT.
8. WHEN ARTIFICIAL LIGHTING IS UTILIZED IN NIGHTTIME OPERATIONS, THE CONTRACTOR SHALL EXERCISE THE OUTMOST PRECAUTIONS PREVENTING ADVERSE VISIBILITY TO THE MOTORING PUBLIC AND ADJACENT RESIDENTIAL AREAS.
9. THE CONTRACTOR SHALL TAKE NECESSARY PRECAUTIONS WHEN WORKING NEAR THE ABUTMENTS IF ELECTRICAL JUNCTIONS BOXES AND ATTACHED CONDUITS ARE PRESENT.
10. DO NOT SCALE PLANS FOR CONSTRUCTION DIMENSIONS.
11. THE "ARTERIAL ROAD INFORMATION SIGN (TC-22)" IS APPLICABLE ONLY TO ARTERIAL ROADS AND SHALL NOT BE APPLIED TO EXPRESSWAYS/TOLLWAYS.
12. THE ENGINEER SHALL CONTACT WALTER CZARNY, AREA TRAFFIC FIELD ENGINEER, AT WALTER.CZARNY@ILLINOIS.GOV A MINIMUM OF TWO (2) WEEKS PRIOR TO THE PLACEMENT OF PERMANENT PAVEMENT MARKINGS.
13. THE CONTRACTOR SHALL BE RESPONSIBLE FOR THE NOTIFICATION OF ALL EMERGENCY SERVICES, SCHOOL DISTRICTS, I.D.O.T.'S COMMUNICATIONS CENTER, SPRINGFIELD TRUCK PERMIT SECTION AND OTHER AGENCIES AFFECTED BY THE CLOSURE. THE CONTRACTOR SHALL ALSO BE RESPONSIBLE FOR POSTING SIGNS THAT WILL INDICATE THE DATES THE CLOSURE WILL BE IN PLACE.

## GENERAL PAINT NOTES

1. CLEANING AND PAINTING OF THE EXISTING STRUCTURAL STEEL SHALL BE AS SPECIFIED IN THE SPECIAL PROVISION FOR "CLEANING AND PAINTING EXISTING STEEL STRUCTURES".
2. ALL ITEMS (SUCH AS, BUT NOT LIMITED TO: CONDUITS, BRACKETS AND DECK DRAINS) ATTACHED TO OUTSIDE OF THE FASCIA BEAMS SHOULD BE CLEANED AND PAINTED.
3. FOR ALL STRUCTURES: ALL BEAMS, BEARINGS, AND OTHER STRUCTURAL STEEL SHALL BE CLEANED PER NEAR WHITE BLAST CLEANING SSPC-SP-10.
4. THESE AREAS SHALL BE PAINTED ACCORDING TO THE REQUIREMENTS OF PAINT SYSTEM 1 -0Z/E/U. THE COLOR OF THE FINAL FINISH COAT FOR ALL INTERIOR STEEL SURFACES SHALL BE GRAY, MUNSELL NO 5B 7/1. THE COLOR OF THE FINAL FINISH COAT FOR THE EXTERIOR AND BOTTOM FLANGE OF THE FASCIA BEAMS SHALL BE REDDISH BROWN, MUNSELL NO 2. 5YR 3/4.
5. A MINIMUM OF 2 AIR MONITORS AT EVERY LOCATION WILL BE REQUIRED TO MONITOR ABRASIVE BLASTING OPERATIONS. SEE SPECIAL PROVISIONS FOR "CONTAINMENT AND DISPOSAL OF LEAD PAINT CLEANING RESIDUE".

MODEL: Default  
 FILE NAME: p:\bullet-new-beamfile.com\FW\DOT\Documents\DOT Office\District 1\Project\ID101023\CADD\data\Design\ID101023-shr-agenencr.dgn

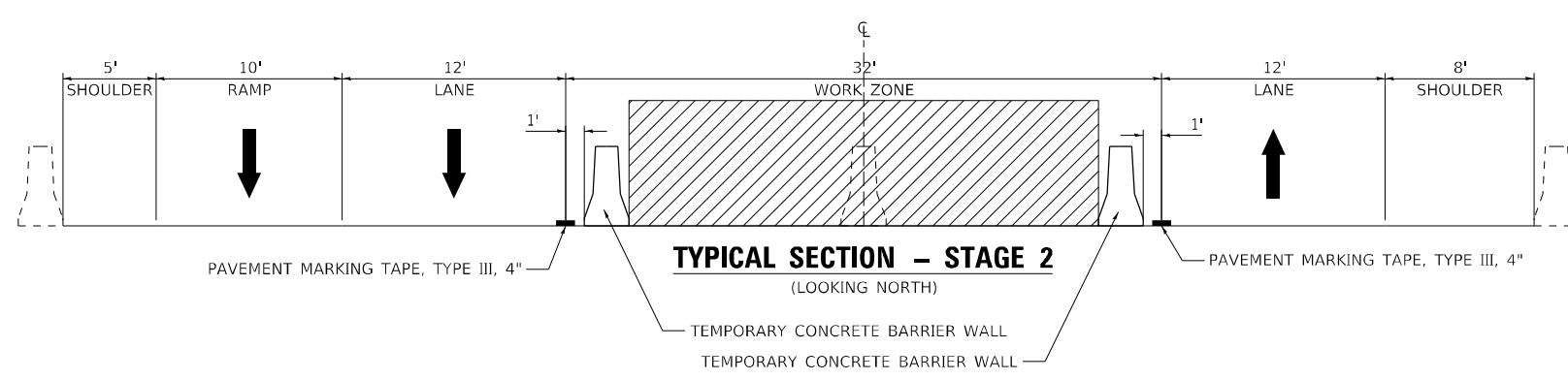
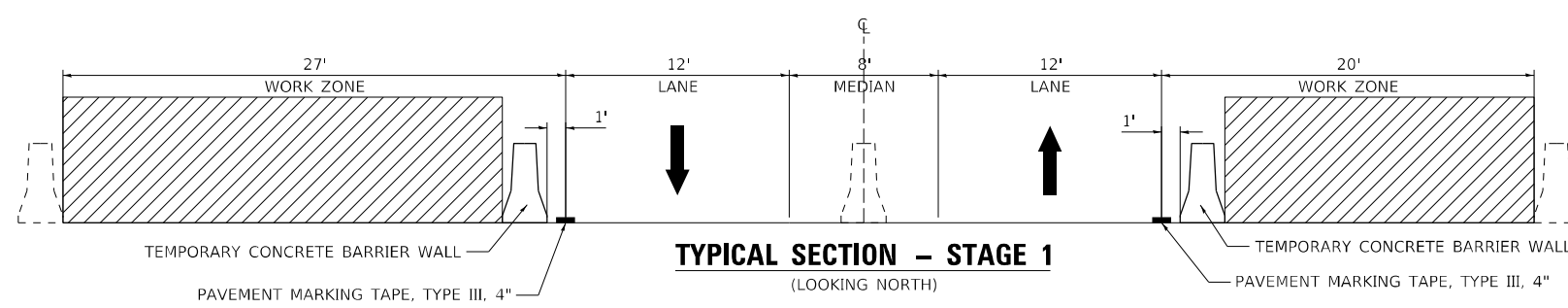
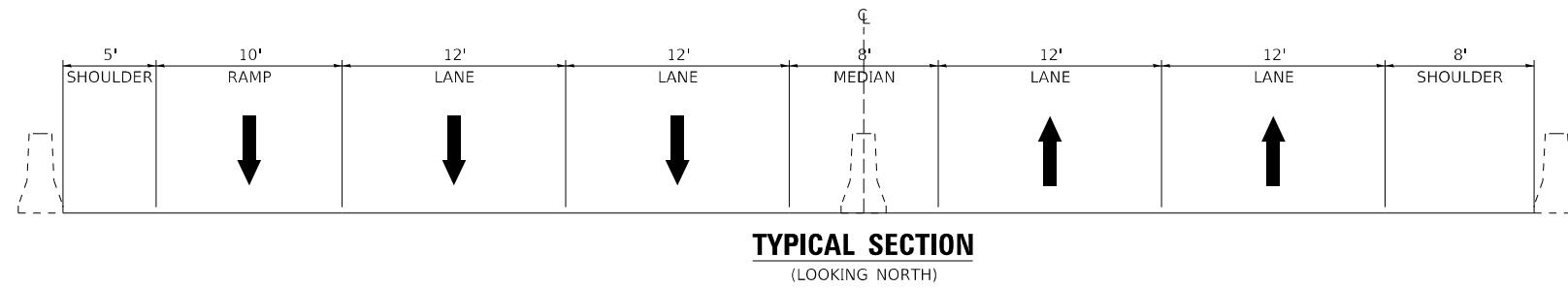
USER NAME = Jacob.Roth PLOT SCALE = 100,0000 ' / in. PLOT DATE = 3/23/2023	DESIGNED - DRAWN - CHECKED - DATE -	REVISED - REVISED - REVISED - REVISED -	<b>STATE OF ILLINOIS DEPARTMENT OF TRANSPORTATION</b>	<b>INDEX OF SHEETS, STATE STANDARDS, GENERAL NOTES &amp; GENERAL PAINTING NOTES</b>	VAR. RTE. SECTION IL 137 22 BP	COUNTY LAKE	TOTAL SHEETS 25	SHEET NO. 2
SCALE:				SHEET 1 OF 1 SHEETS	STA.	TO STA.		
				ILLINOIS		FED. AID PROJECT		
						CONTRACT NO. 62U17		

SUMMARY OF QUANTITIES			URBAN TOTAL QUANTITIES 80% FED 20% STATE	CONSTRUCTION TYPE CODE					
CODE NO	ITEM	UNIT		0047 BRIDGE 1 SN 049-0028	0047 BRIDGE 2 SN 049-0163	0047 BRIDGE 3 SN 049-0164			
67100100	MOBILIZATION	L SUM	1	0.33	0.33	0.34			
70107005	PAVEMENT MARKING BLACKOUT TAPE, 5"	FOOT	1550			1550			
70300150	SHORT TERM PAVEMENT MARKING REMOVAL	SO FT	2130			2130			
70307120	TEMPORARY PAVEMENT MARKING - LINE 4" - TYPE IV TAPE	FOOT	6390			6390			
70400100	TEMPORARY CONCRETE BARRIER	FOOT	675			675			
70400200	RELOCATE TEMPORARY CONCRETE BARRIER	FOOT	675			675			
70600250	IMPACT ATTENUATORS, TEMPORARY (NON- REDIRECTIVE), TEST LEVEL 3	EACH	2			2			
70600350	IMPACT ATTENUATORS, RELOCATE (NON- REDIRECTIVE), TEST LEVEL 3	EACH	2			2			
78000200	THERMOPLASTIC PAVEMENT MARKING - LINE 4"	FOOT	1550			1550			
78100300	REPLACEMENT REFLECTOR	EACH	144			144			
X6700407	ENGINEER'S FIELD OFFICE, TYPE A (D1)	CAL MO	12	4	4	4			
X7010216	TRAFFIC CONTROL AND PROTECTION, (SPECIAL)	L SUM	1		0.5	0.5			
Z0007101	CONTAINMENT AND DISPOSAL OF LEAD PAINT CLEANING RESIDUES NO. 1	L SUM	1	1					

SUMMARY OF QUANTITIES				TOTAL QUANTITIES	CONSTRUCTION TYPE CODE					
CODE NO	ITEM	UNIT	0047 BRIDGE 1 SN 049-0028		0047 BRIDGE 2 SN 049-0163	0047 BRIDGE 3 SN 049-0164				
Z0007102	CONTAINMENT AND DISPOSAL OF LEAD PAINT CLEANING RESIDUES NO. 2	L SUM	1		1					
Z0007103	CONTAINMENT AND DISPOSAL OF LEAD PAINT CLEANING RESIDUES NO. 3	L SUM	1			1				
Z0010501	CLEANING AND PAINTING STEEL BRIDGE NO. 1	L SUM	1	1						
Z0010502	CLEANING AND PAINTING STEEL BRIDGE NO. 2	L SUM	1		1					
Z0010503	CLEANING AND PAINTING STEEL BRIDGE NO. 3	L SUM	1			1				
Z0030850	TEMPORARY INFORMATION SIGNING	SO FT	228.8	51.4	74.6	102.8				

FILE NAME =	USER NAME = Jacob.Roth	DESIGNED -	REVISED -	<b>STATE OF ILLINOIS DEPARTMENT OF TRANSPORTATION</b>	<b>US 41 &amp; ILL 137 SUMMARY OF QUANTITIES</b>	VAR. RTE.	SECTION	COUNTY	TOTAL SHEETS	SHEET NO.
pw:\11dot-pw\benley.com\PW\DOT\Documents\11DOT - Office\District 1\Projects\DI01023\CAD\data\Design\DI01023-ent-SC01.dwg	DRAWN -	REVISED -	VAR.			IL 137 22 BP	LAKE	25	3	
PLOT SCALE = 100,0000' / 1in.	CHECKED -	REVISED -	CONTRACT NO. 62U17							
PLOT DATE = 3/23/2023	DATE -	REVISED -	FED. ROAD DIST. NO. 1   ILLINOIS FED. AID PROJECT							
SCALE:		SHEET NO. 1 OF 1 SHEETS		STA.	TO STA.					





MODEL: Default  
 FILE: \\na11c-pw-bentley.com\P\1\DOT\Documents\DOT Office\Dir\dtdt\_1\Project\101023\CADD\Drawings\101023-shr-std\stage.dgn

USER NAME = Jacob.Roth	DESIGNED -	REVISED -
	DRAWN -	REVISED -
PLOT SCALE = 100,0000' / in.	CHECKED -	REVISED -
PLOT DATE = 3/23/2023	DATE -	REVISED -

**STATE OF ILLINOIS**  
**DEPARTMENT OF TRANSPORTATION**

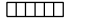
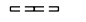


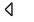



**TYPICAL SECTIONS - STAGE 1 AND STAGE 2**  
**IL 137 AT WASHINGTON STREET**

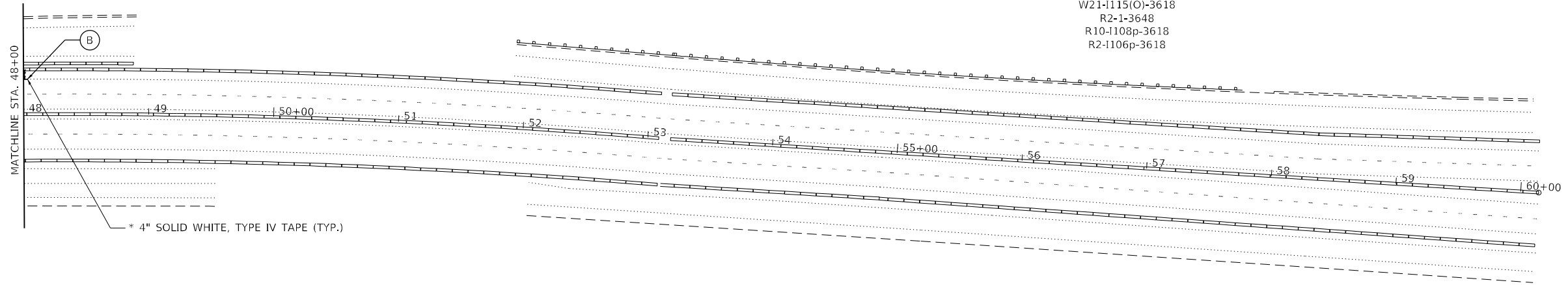
SCALE: SHEET OF SHEETS STA. TO STA.

F.A.* RTE.:	SECTION	COUNTY	TOTAL SHEETS	SHEET NO.
*	IL 137 22 BP	LAKE	25	5
* = FAP 346 & FAP 352			CONTRACT NO. 62U17	
ILLINOIS FED. AID PROJECT				

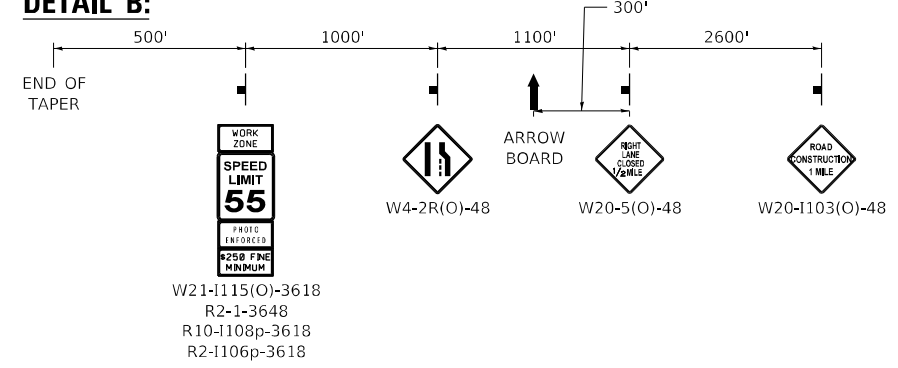


**LEGEND:**

-  IMPACT ATTENUATOR
-  TEMPORARY CONCRETE BARRIER
-  DIRECTION INDICATOR BARRICADE WITH STEADY BURN MONODIRECTIONAL LIGHT
-  TYPE II BARRICADE, DRUM, OR VERTICAL BARRICADE WITH STEADY BURN MONODIRECTIONAL LIGHT
-  MONODIRECTIONAL BARRIER WALL REFLECTOR
-  ARROW BOARD
-  SIGN
-  WORK ZONE



**DETAIL B:**



**NOTE:**

TEMPORARY PAVEMENT MARKING TAPE & THE COVERING OF CONFLICTING PAVEMENT MARKINGS WITH BLACKOUT TAPE ALONG WITH THE REMOVAL OF CONFLICTING RAISED REFLECTIVE PAVEMENT MARKER ELEMENTS SHALL BE REQUIRED ONLY IF THE CLOSURE TIME EXCEEDS 14 DAYS.

MODEL: Default  
 FILE NAME: p:\il137\paw\_bentley.com\P\111001\Documents\11DOT Office\Dir\rdet\_11\Project\1101023\CADD\data\Design\1101023-shr-std\stage.dgn

USER NAME = Jacob.Roth	DESIGNED -	REVISED -
PLOT SCALE = 100,0000' / in.	DRAWN -	REVISED -
PLOT DATE = 3/23/2023	CHECKED -	REVISED -
	DATE -	REVISED -

**STATE OF ILLINOIS  
DEPARTMENT OF TRANSPORTATION**

**STAGE 1 TRAFFIC CONTROL PLAN  
IL 137 AT WASHINGTON STREET**

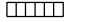
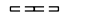





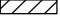
SCALE: SHEET 2 OF 2 SHEETS STA. TO STA.

VAR RTE.	SECTION	COUNTY	TOTAL SHEETS	SHEET NO.
*	IL 137 22 BP	LAKE	25	7
* = FAP 346 & FAP 352			CONTRACT NO. 62U17	
ILLINOIS FED. AID PROJECT				

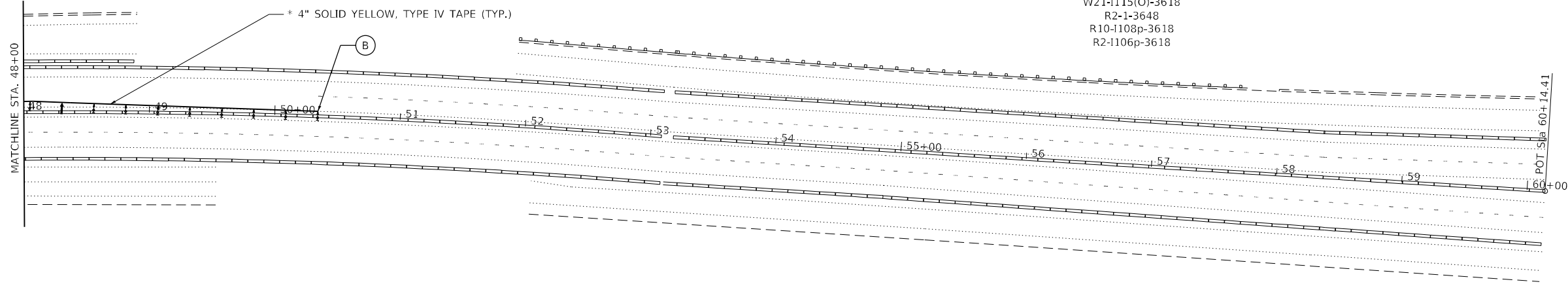
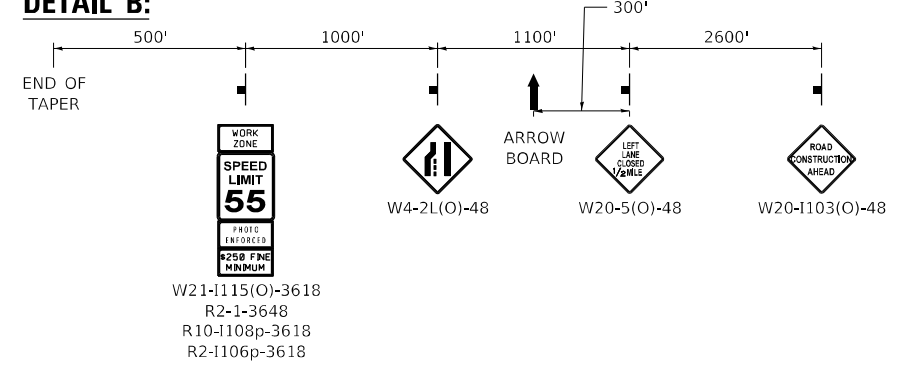




**LEGEND:**

-  IMPACT ATTENUATOR
-  TEMPORARY CONCRETE BARRIER
-  DIRECTION INDICATOR BARRICADE WITH STEADY BURN MONODIRECTIONAL LIGHT
-  TYPE II BARRICADE, DRUM, OR VERTICAL BARRICADE WITH STEADY BURN MONODIRECTIONAL LIGHT
-  MONODIRECTIONAL BARRIER WALL REFLECTOR
-  ARROW BOARD
-  SIGN
-  WORK ZONE

**DETAIL B:**



**NOTE:**

TEMPORARY PAVEMENT MARKING TAPE & THE COVERING OF CONFLICTING PAVEMENT MARKINGS WITH BLACKOUT TAPE ALONG WITH THE REMOVAL OF CONFLICTING RAISED REFLECTIVE PAVEMENT MARKER ELEMENTS SHALL BE REQUIRED ONLY IF THE CLOSURE TIME EXCEEDS 14 DAYS.

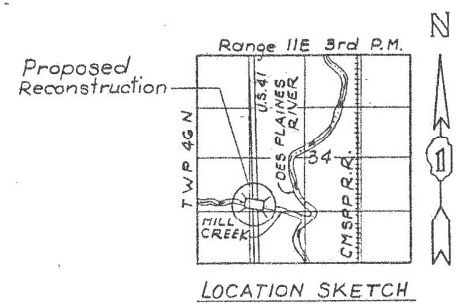
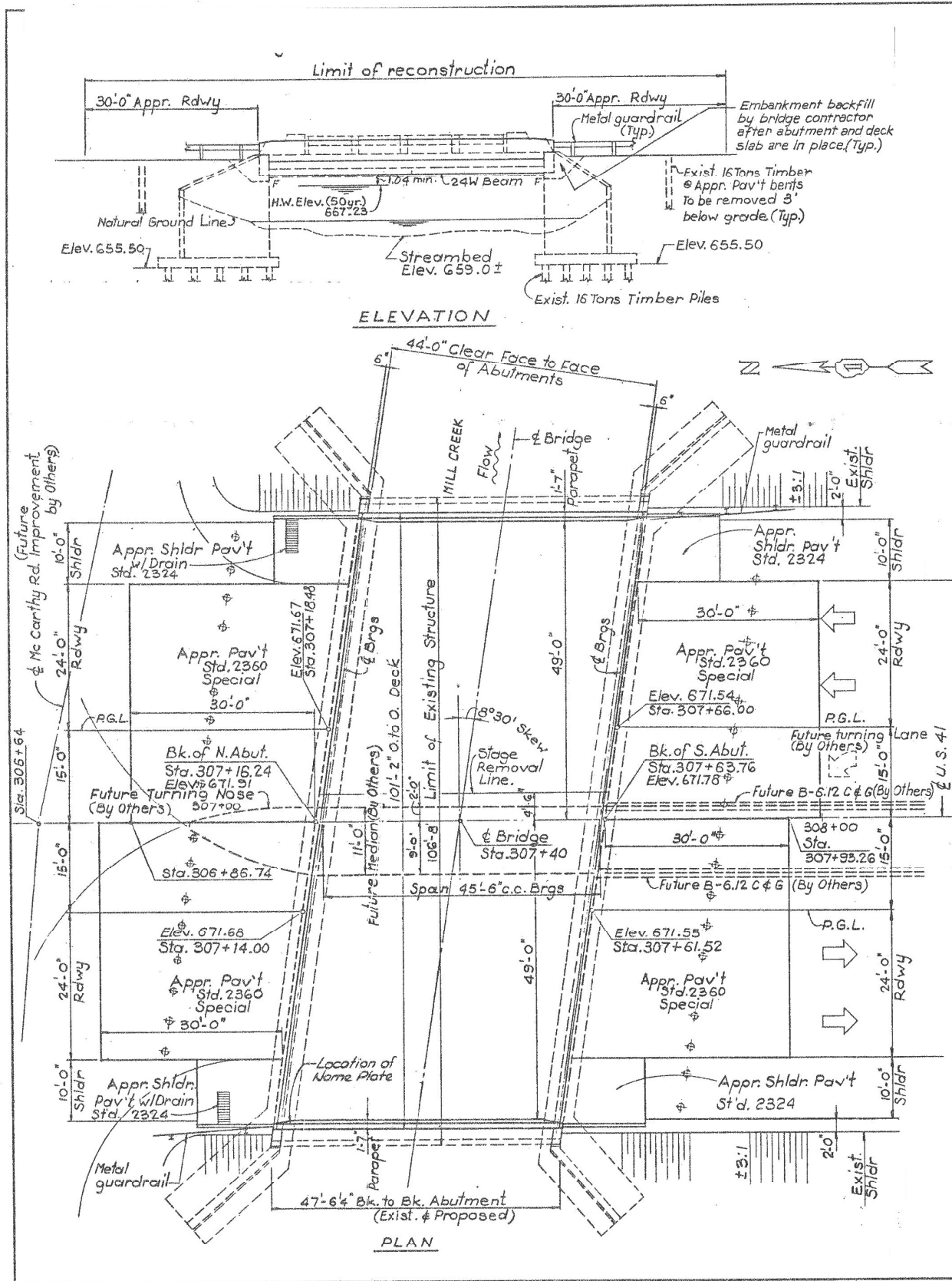
MODEL: Default  
 FILE NAME: p:\il\dot\aw\ben\aw.com\p\il\dot\Documents\DOT\Office\Dir\rdt\_1\Project\ID101023\CADD\data\Design\ID101023-ah-ata\stage.dgn

USER NAME = Jacob.Roth	DESIGNED -	REVISED -
PLOT SCALE = 100,0000' / in.	DRAWN -	REVISED -
PLOT DATE = 3/23/2023	CHECKED -	REVISED -
	DATE -	REVISED -

**STATE OF ILLINOIS**  
**DEPARTMENT OF TRANSPORTATION**

<b>STAGE 2 TRAFFIC CONTROL PLAN</b> <b>IL 137 AT WASHINGTON STREET</b>			
SCALE:	SHEET 2 OF 2 SHEETS	STA.	TO STA.

VAR RTE.	SECTION	COUNTY	TOTAL SHEETS	SHEET NO.
*	IL 137 22 BP	LAKE	25	9
* = FAP 346 & FAP 352			CONTRACT NO. 62U17	
ILLINOIS FED. AID PROJECT				



FOR INFORMATION ONLY

MODEL: Default  
 FILE: A:\MIS\p\build\paw\_beaufay.com\PIV\DOT\Documents\DOT Office\Drawings\1101\Projects\1101\23\110123\110123.dwg  
 PLOT DATE = 3/23/2023

USER NAME = Jacob.Roth	DESIGNED -	REVISED -
	DRAWN -	REVISED -
PLOT SCALE = 100,0000' / in.	CHECKED -	REVISED -
PLOT DATE = 3/23/2023	DATE -	REVISED -

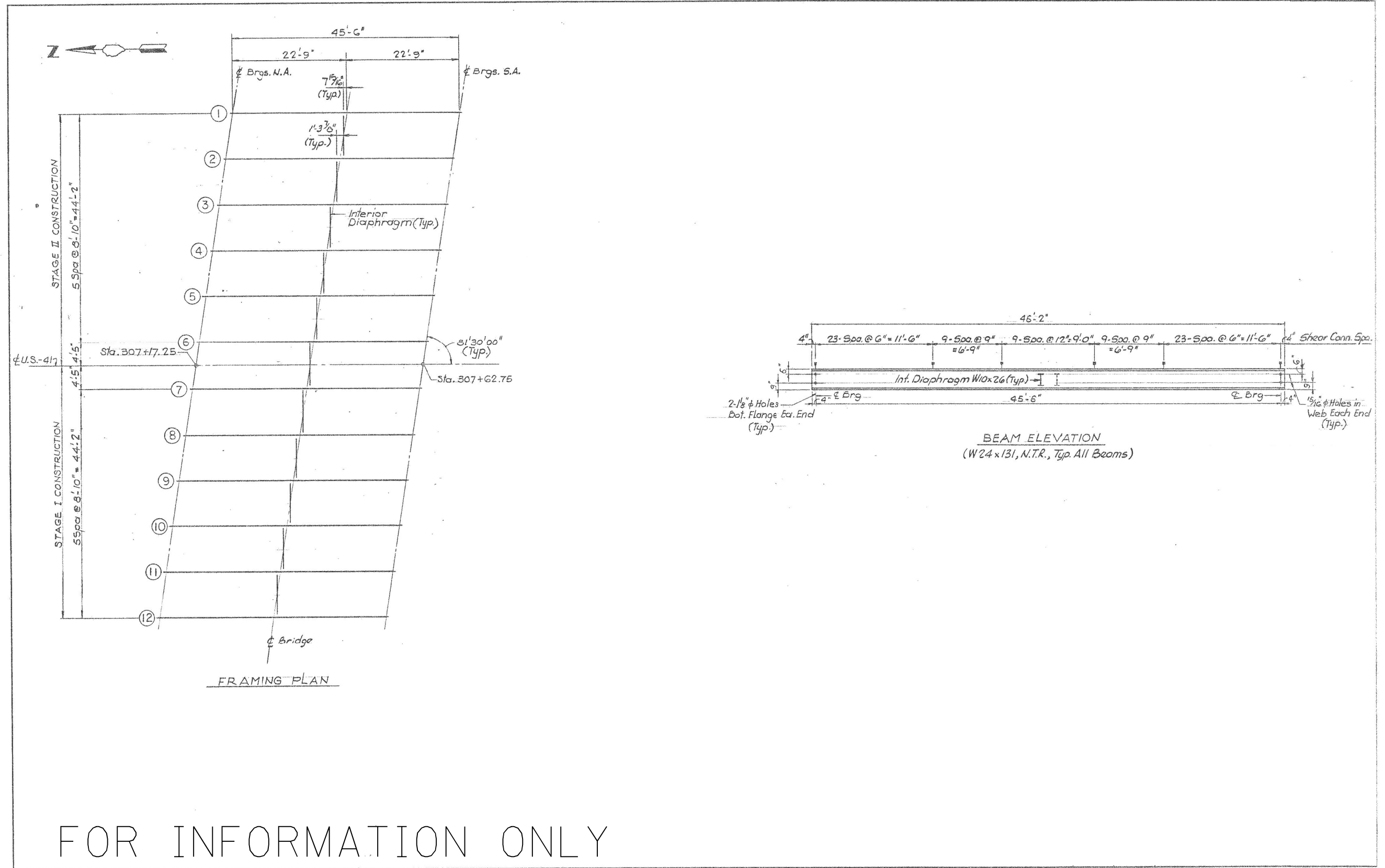
STATE OF ILLINOIS  
DEPARTMENT OF TRANSPORTATION

LOCATION 1: PLAN & ELEVATION (SN: 049-0028)  
US 41 OVER MILL CREEK

SCALE: SHEET OF SHEETS STA. TO STA.

V.A.R. RTE.	SECTION	COUNTY	TOTAL SHEETS	SHEET NO.
VAR.	IL 137 22 BP	LAKE	25	10
CONTRACT NO. 62U17				

ILLINOIS FED. AID PROJECT



FOR INFORMATION ONLY

MODEL: Default  
FILE: Mainfile.pdw  
PROJECT: I:\Projects\DOT\Office\Drawings\11023\11023\11023.dwg  
DATE: 3/23/2023

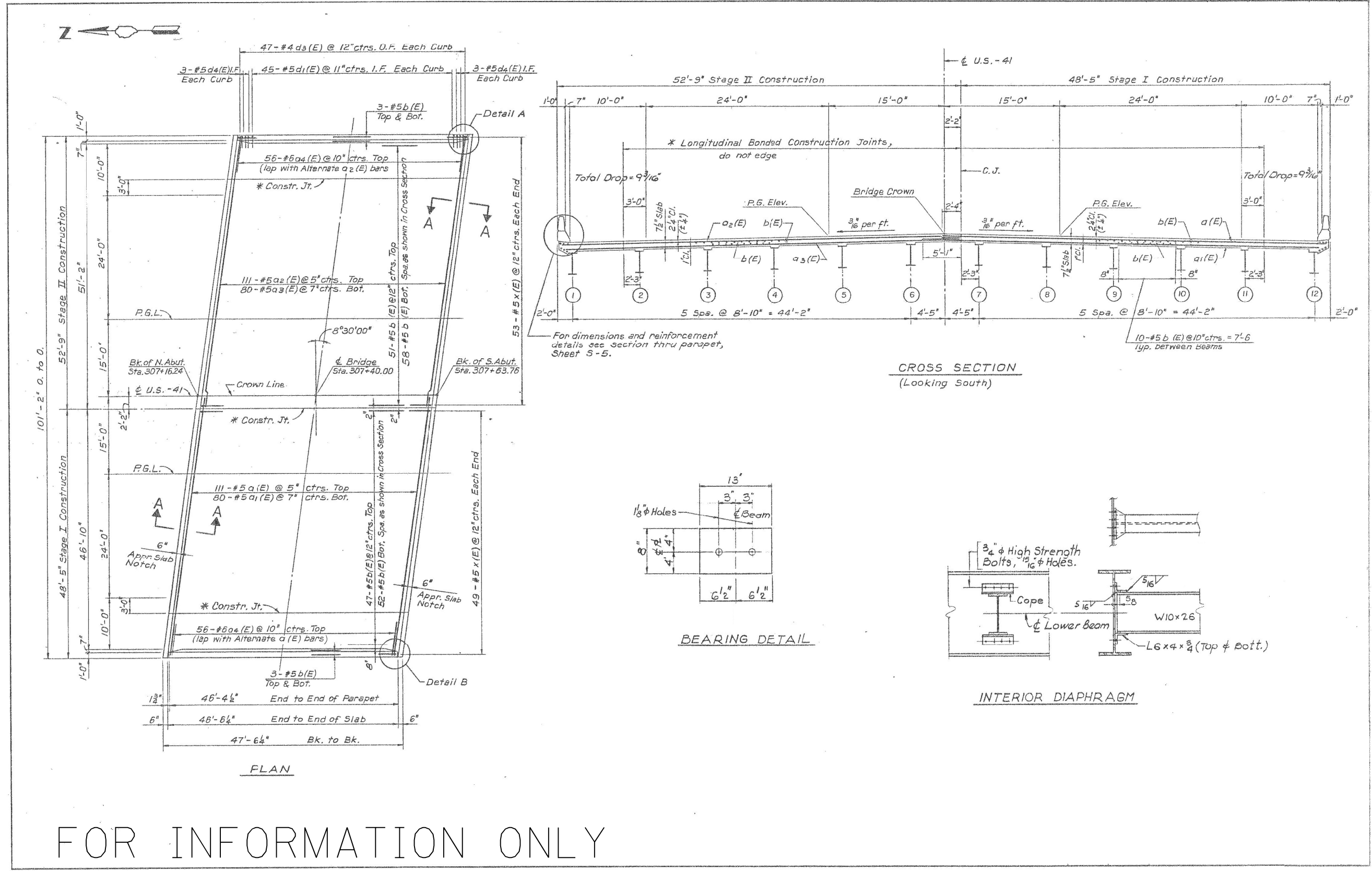
USER NAME = Jacob.Roth	DESIGNED -	REVISED -
	DRAWN -	REVISED -
PLOT SCALE = 100,0000' / in.	CHECKED -	REVISED -
PLOT DATE = 3/23/2023	DATE -	REVISED -

**STATE OF ILLINOIS  
DEPARTMENT OF TRANSPORTATION**

**LOCATION 1: FRAMING PLAN  
US 41 OVER MILL CREEK**

SCALE: SHEET OF SHEETS STA. TO STA.

V.A.R. RTE.	SECTION	COUNTY	TOTAL SHEETS	SHEET NO.
VAR.	IL 137 22 BP	LAKE	25	11
CONTRACT NO. 62U17				
ILLINOIS FED. AID PROJECT				



FOR INFORMATION ONLY

MODEL: Default  
 FILE NAME: p:\project\101023\CADD\Drawings\101023-28r-18a.dwg  
 PROJECT: 101023\CADD\Drawings\101023-28r-18a.dwg

USER NAME = Jacob.Roth	DESIGNED -	REVISED -
	DRAWN -	REVISED -
PLOT SCALE = 100,0000' / in.	CHECKED -	REVISED -
PLOT DATE = 3/23/2023	DATE -	REVISED -

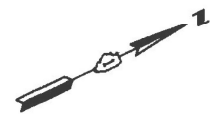
STATE OF ILLINOIS  
DEPARTMENT OF TRANSPORTATION

LOCATION 1: BRIDGE CROSS SECTION & BEARING DETAILS  
US 41 OVER MILL CREEK

SCALE:	SHEET	OF	SHEETS	STA.	TO	STA.
--------	-------	----	--------	------	----	------

V.A.R. RTE.	SECTION	COUNTY	TOTAL SHEETS	SHEET NO.
VAR.	IL 137 22 BP	LAKE	25	12
CONTRACT NO. 62U17				
ILLINOIS FED. AID PROJECT				



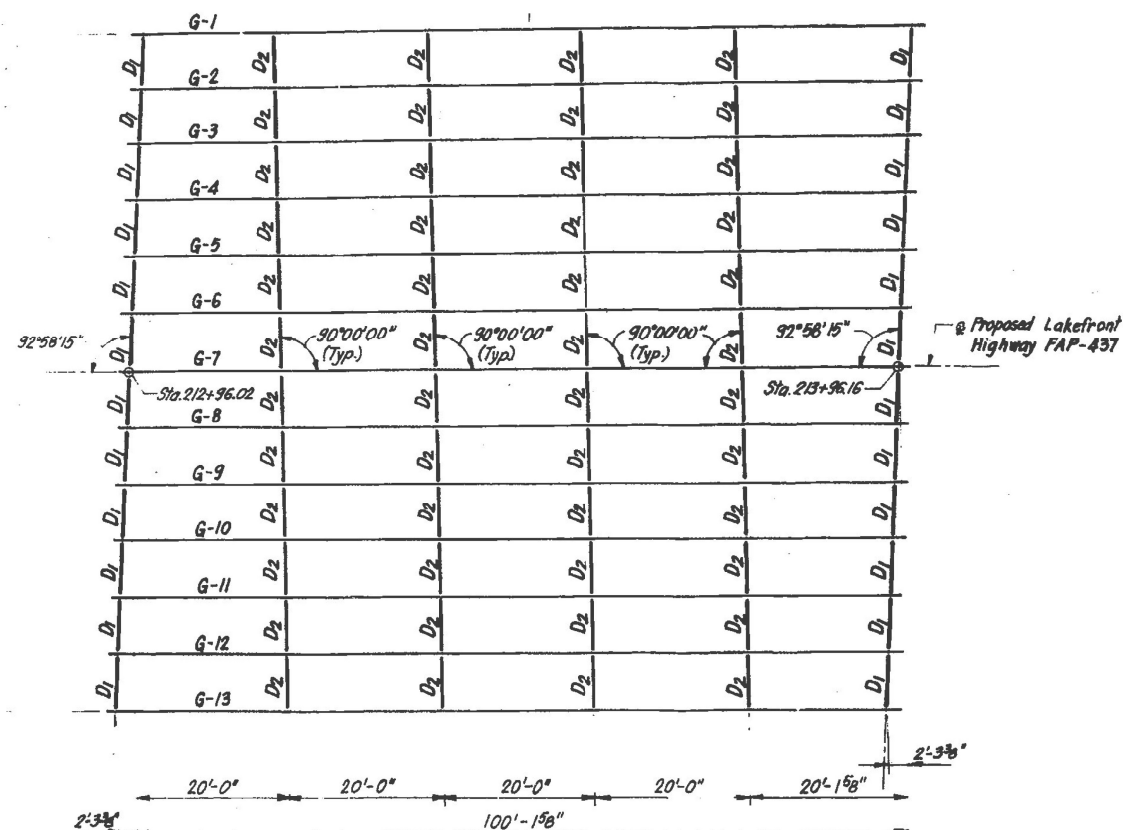


@ Brg. S. Abut.

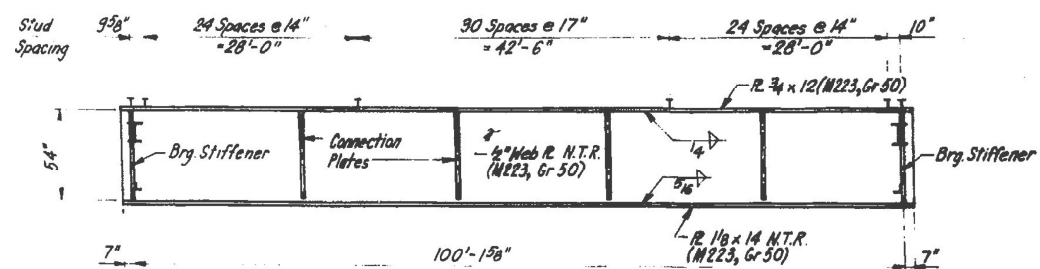
@ Proposed 24<sup>th</sup> St

@ Brg. N. Abut.

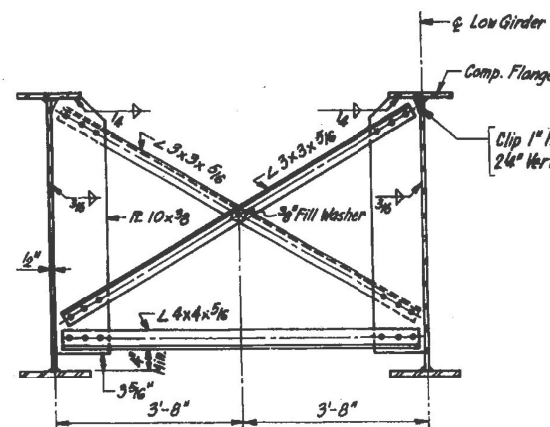
12 Spaces @ 7'-4" = 88'-0"



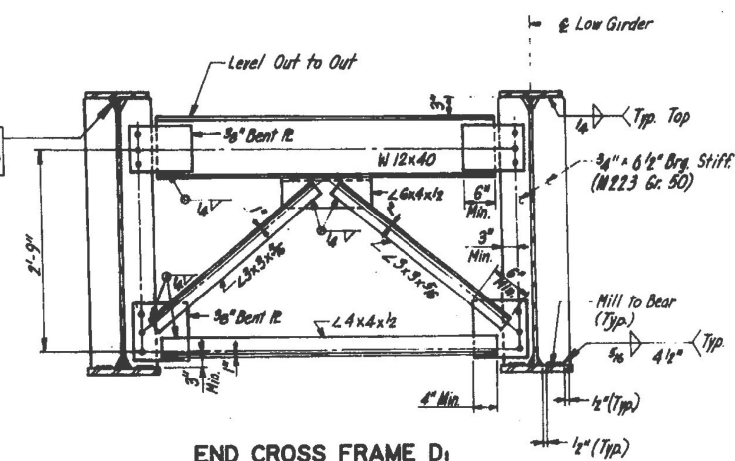
FRAMING PLAN



GIRDER ELEVATION



INTERIOR CROSS FRAME D<sub>2</sub>  
(48 - Required)



END CROSS FRAME D<sub>1</sub>  
(24 - Required)

FOR INFORMATION ONLY

MODEL: Default  
 FILE: \\bldg-cw-beadley.com\FW\DOT\Documents\DOT Office\Dir\rdet\_1\Project\1101023\CADD\data\Design\1101023-dt-rd-1a.rvt  
 DATE: 3/23/2023

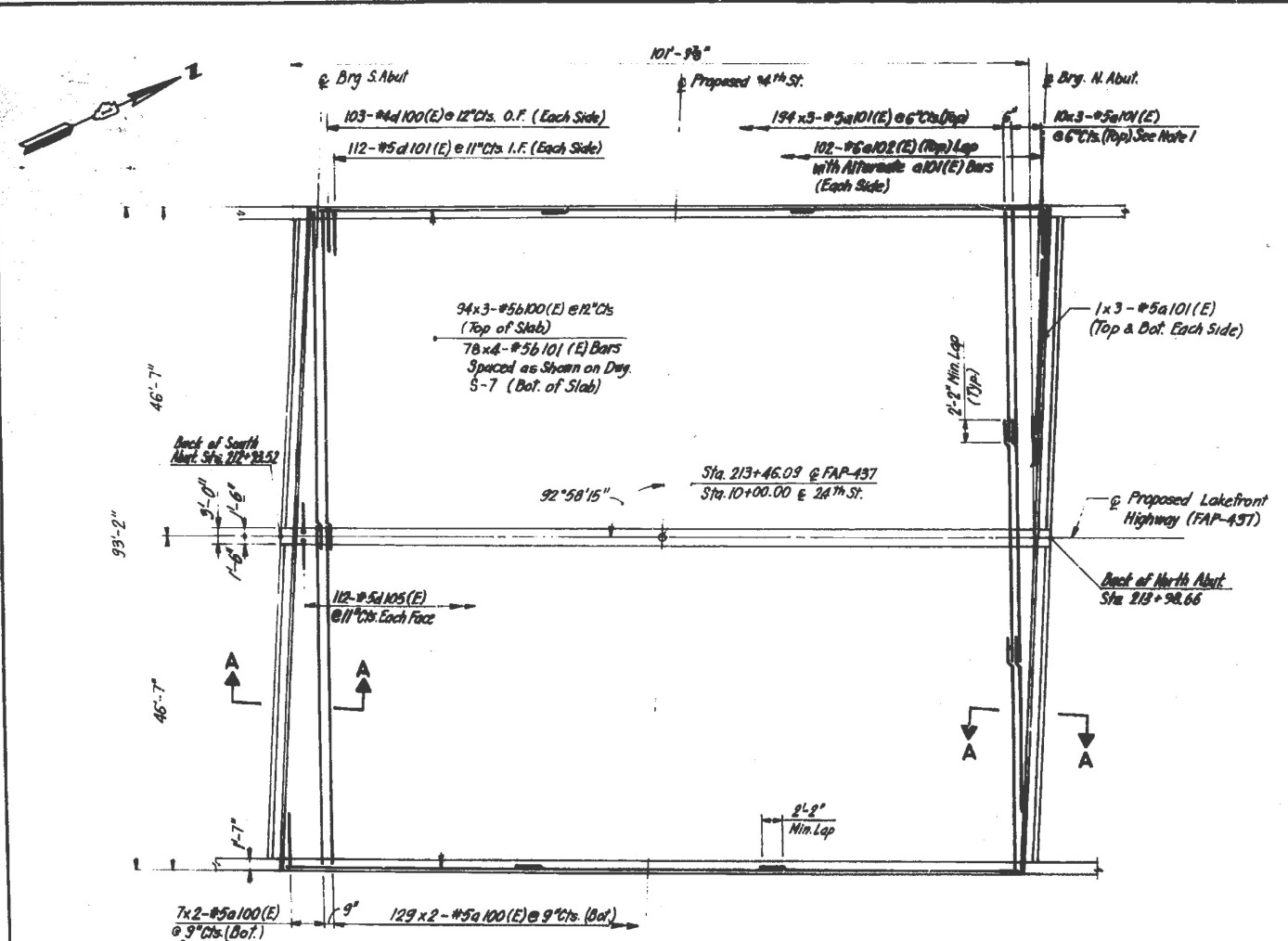
USER NAME = Jacob.Roth	DESIGNED -	REVISED -
DRAWN -	REVISIONS -	
PLOT SCALE = 100,0000' / in.	CHECKED -	REVISIONS -
PLOT DATE = 3/23/2023	DATE -	REVISIONS -

STATE OF ILLINOIS  
DEPARTMENT OF TRANSPORTATION

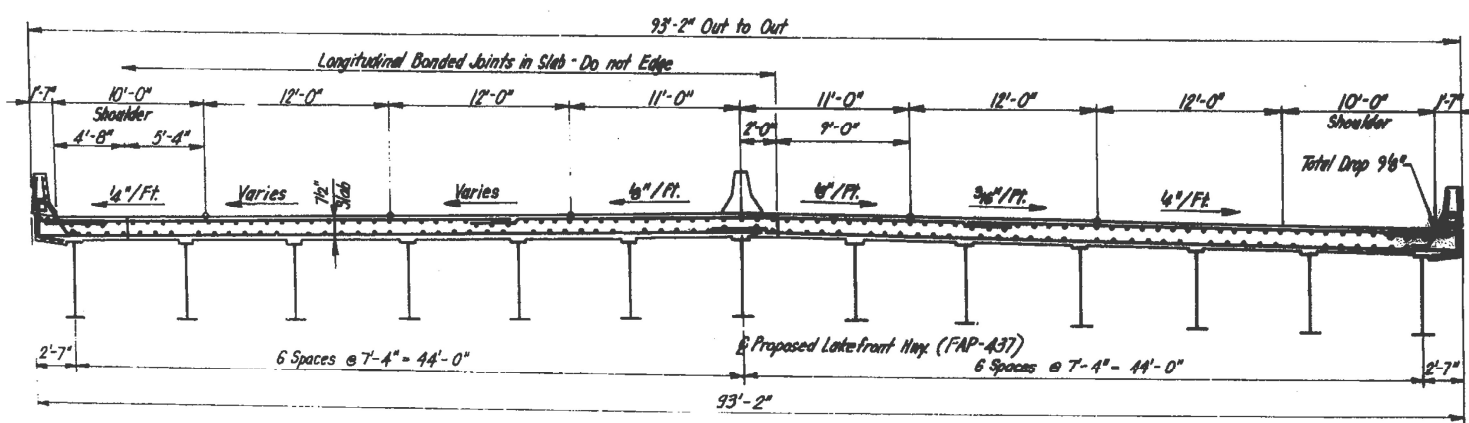
LOCATION 2: FRAMING PLAN  
ILL 137 (LAKE FRONT FWY) OVER 24TH STREET

SCALE: SHEET OF SHEETS STA. TO STA.

V.A.R. RTE.	SECTION	COUNTY	TOTAL SHEETS	SHEET NO.
VAR.	IL 137 22 BP	LAKE	25	14
CONTRACT NO. 62U17				
ILLINOIS FED. AID PROJECT				



PLAN



CROSS SECTION  
(LOOKING UP-STATION)

FOR INFORMATION ONLY

MODEL Default  
 FILE Name: p:\illust\aw\_bca\del\com\p\illust\Documents\DOT\Office\Dir\del\_1\Project\1101023\CAD\Drawings\Design\1101023\del\_1\del\_1.dwg

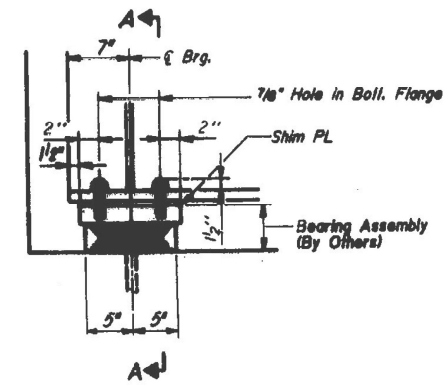
USER NAME = Jacob.Roth	DESIGNED -	REVISED -
PLOT SCALE = 100,0000' / in.	DRAWN -	REVISED -
PLOT DATE = 3/23/2023	CHECKED -	REVISED -
	DATE -	REVISED -

STATE OF ILLINOIS  
DEPARTMENT OF TRANSPORTATION

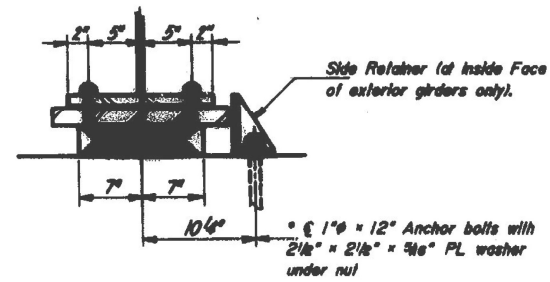
LOCATION 2: BRIDGE CROSS SECTION  
ILL 137 (LAKE FRONT FWY) OVER 24TH STREET

SCALE: SHEET OF SHEETS STA. TO STA.

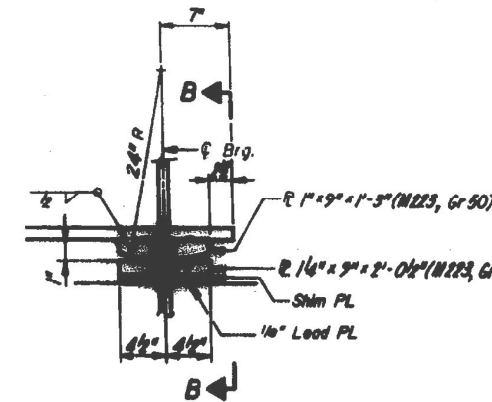
V.A.R. RTE.	SECTION	COUNTY	TOTAL SHEETS	SHEET NO.
VAR.	IL 137 22 BP	LAKE	25	15
CONTRACT NO. 62U17				
		ILLINOIS FED. AID PROJECT		



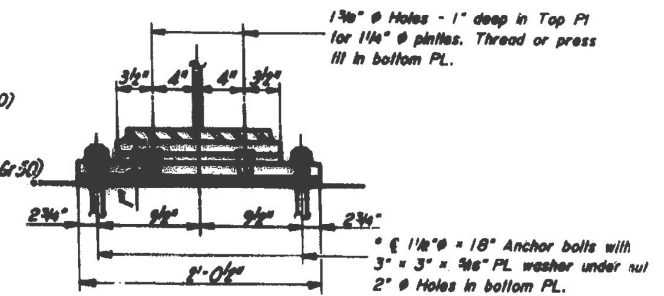
ELEVATION AT N.ABUT.



SECTION A-A

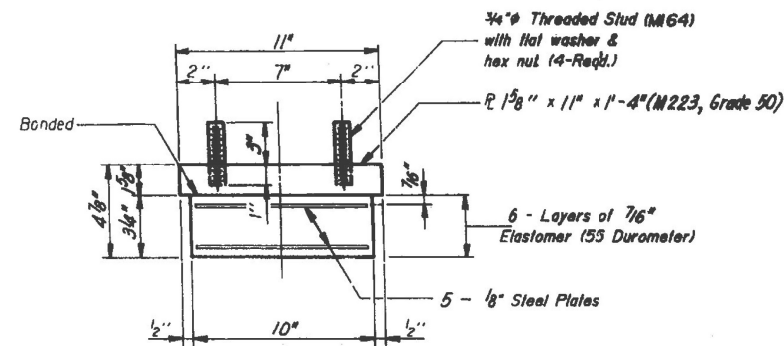


ELEVATION AT S.ABUT.



SECTION B-B

**TYPE I ELASTOMERIC EXP. BRG.**  
13 Required



**BEARING ASSEMBLY**

Note: Shim plates shall not be placed under Bearing Assembly.

**FIXED BEARING**  
13 Required

FOR INFORMATION ONLY

MODEL: Default  
 FILE NAME: p:\project\aw\_bearings\com\p\INDOT\Documents\DOT Office\Dir\rdet\_1\Project\ID101023\CADD\data\Design\ID101023-24th-IL-62U17.dwg

USER NAME = Jacob.Roth	DESIGNED -	REVISED -
PLOT SCALE = 100,0000' / in.	DRAWN -	REVISED -
PLOT DATE = 3/23/2023	CHECKED -	REVISED -
	DATE -	REVISED -

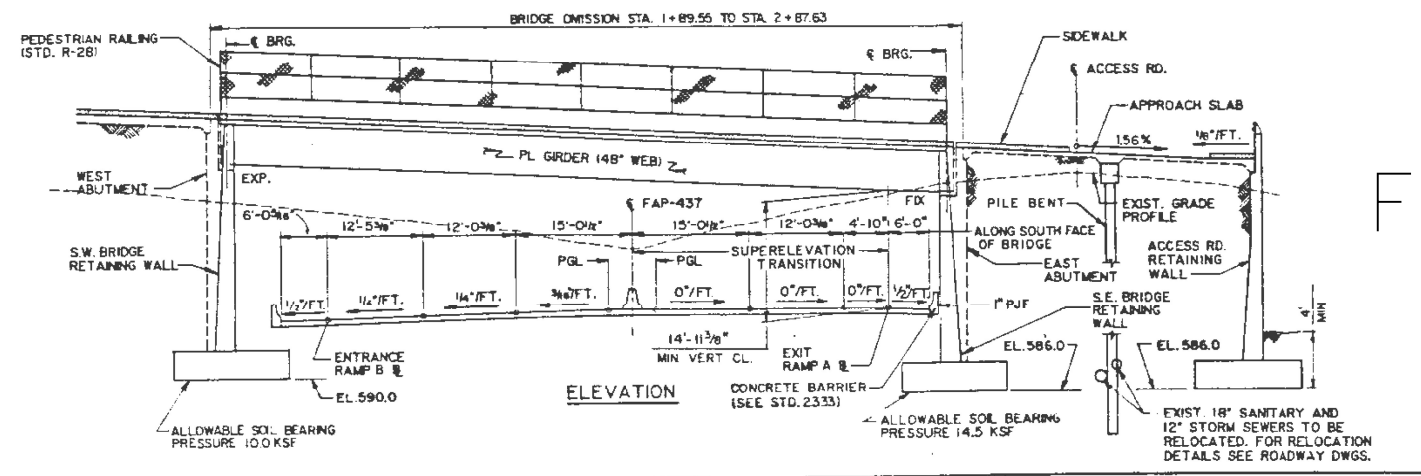
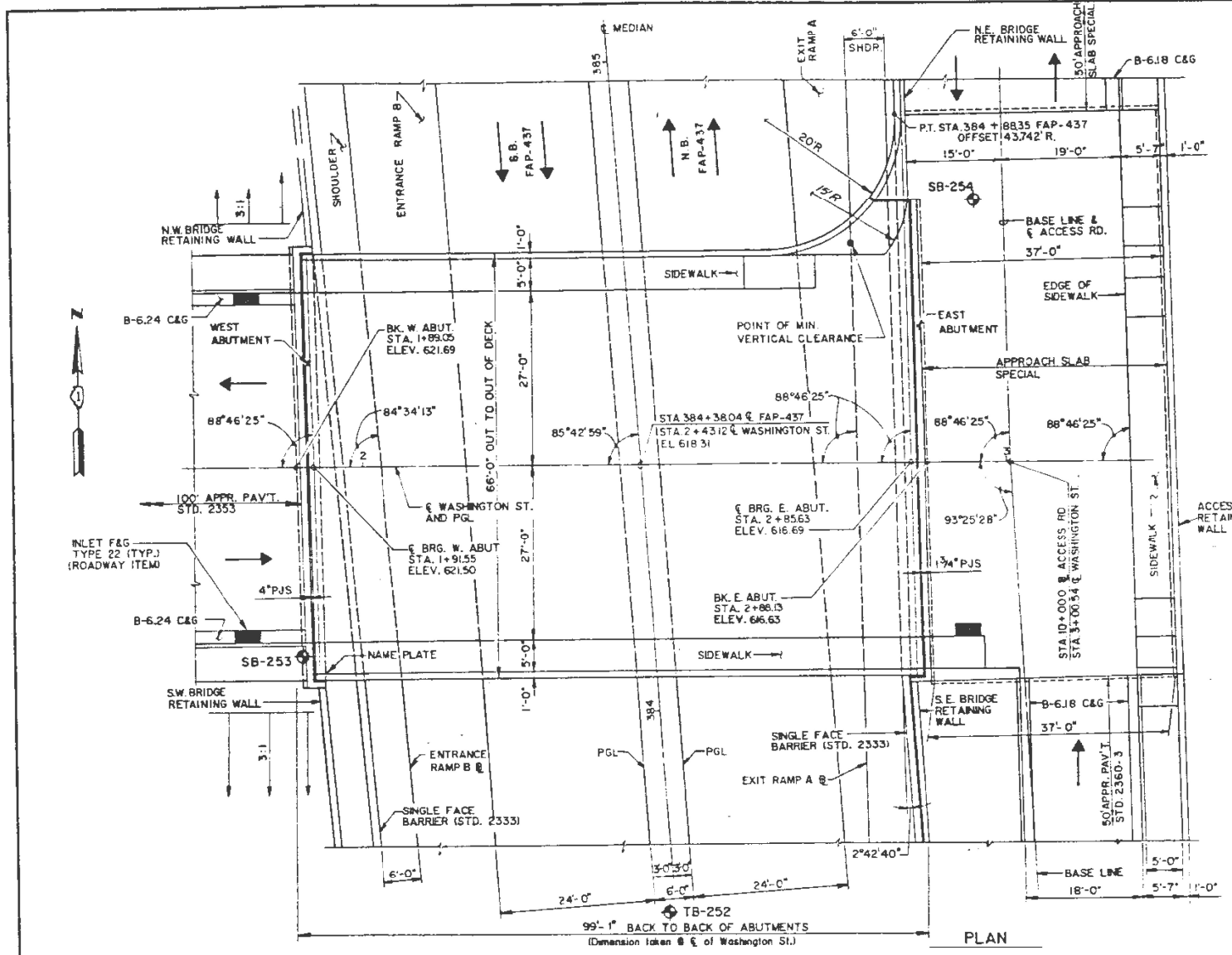
STATE OF ILLINOIS  
DEPARTMENT OF TRANSPORTATION

LOCATION 2: BEARING DETAILS  
ILL 137 (LAKE FRONT FWY) OVER 24TH STREET

SCALE: SHEET OF SHEETS STA. TO STA.

V.A.R. RTE.	SECTION	COUNTY	TOTAL SHEETS	SHEET NO.
VAR.	IL 137 22 BP	LAKE	25	16
CONTRACT NO. 62U17				
ILLINOIS FED. AID PROJECT				





FOR INFORMATION ONLY

MODEL: Default  
FILE: 3041612.ctb  
PROJECT: \projects\11010231\11010231\11010231\11010231.ctb  
PROJECT: \projects\11010231\11010231\11010231\11010231.ctb

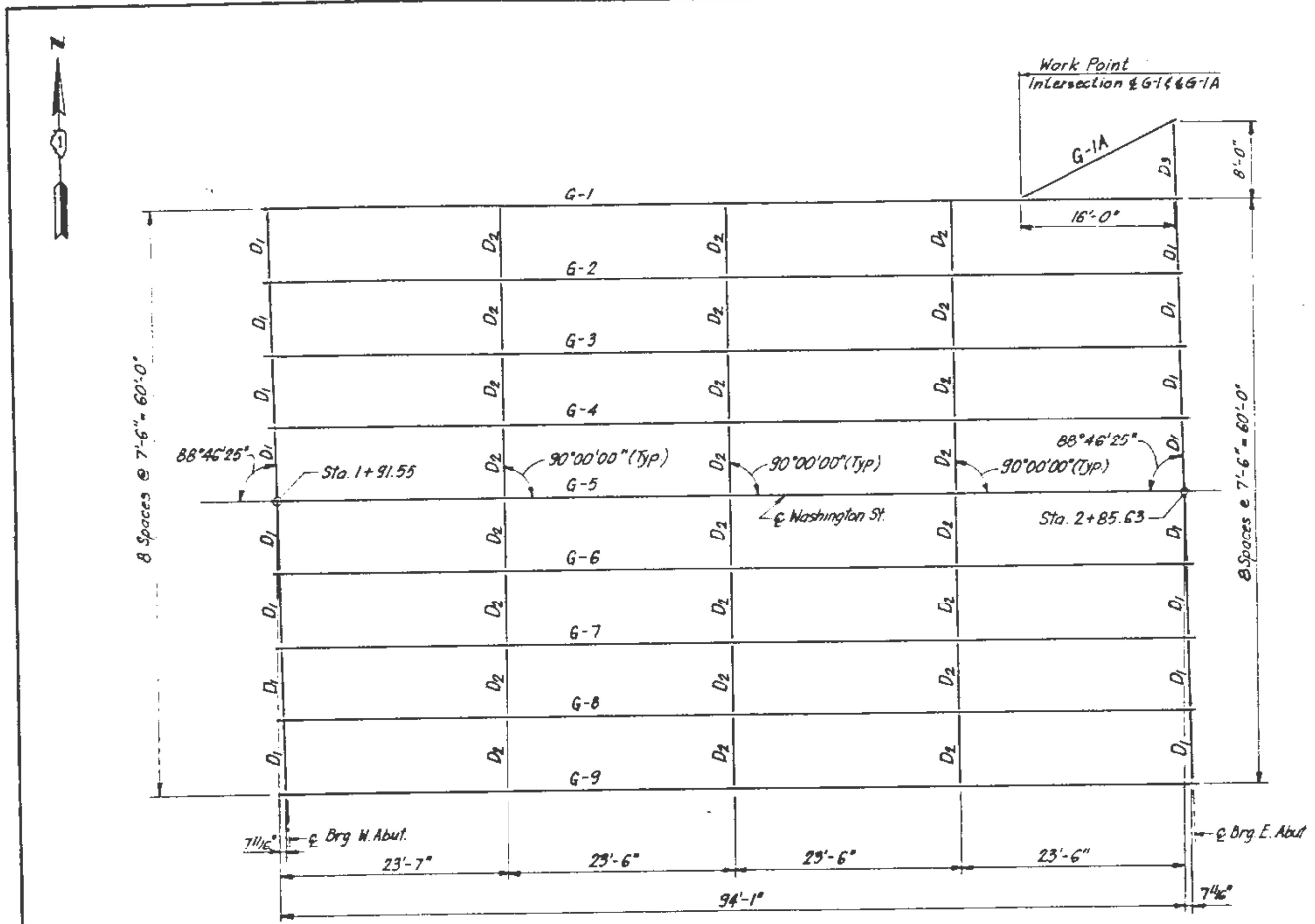
USER NAME = Jacob.Roth	DESIGNED -	REVISED -
	DRAWN -	REVISED -
PLOT SCALE = 100,0000' / in.	CHECKED -	REVISED -
PLOT DATE = 3/23/2023	DATE -	REVISED -

STATE OF ILLINOIS  
DEPARTMENT OF TRANSPORTATION

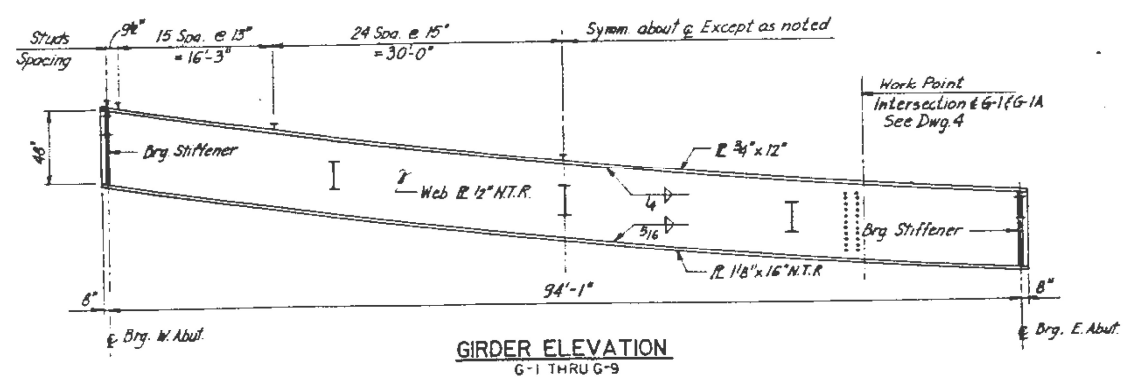
LOCATION 3: PLAN & ELEVATION (SN: 049-0164)  
WASHINGTON STREET OVER ILL 137 (LAKE FRONT FWY)

SCALE:	SHEET	OF	SHEETS	STA.	TO	STA.
--------	-------	----	--------	------	----	------

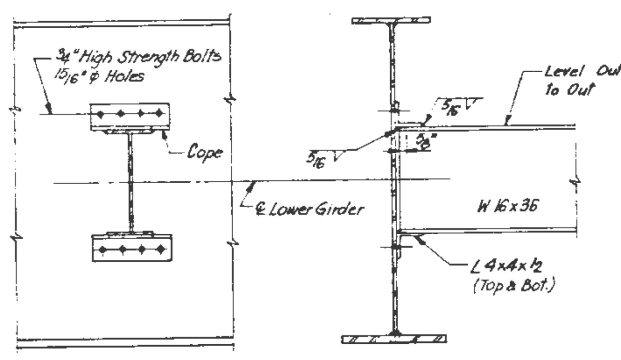
V.A.R. RTE.	SECTION	COUNTY	TOTAL SHEETS	SHEET NO.
VAR.	IL 137 22 BP	LAKE	25	17
CONTRACT NO. 62U17				
ILLINOIS FED. AID PROJECT				



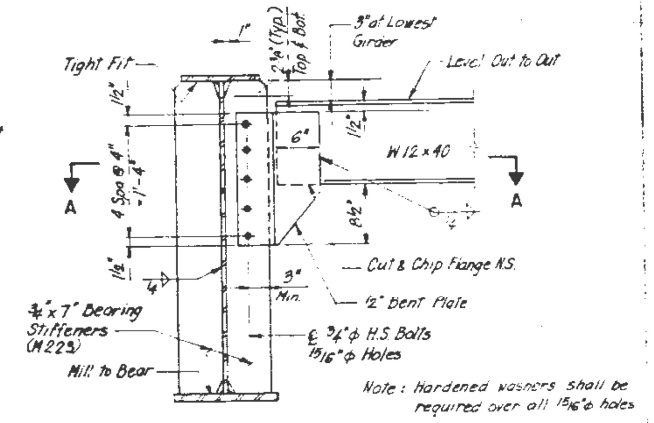
FRAMING PLAN



GIRDER ELEVATION  
G-1 THRU G-9



INTERIOR DIAPHRAGM D2



END DIAPHRAGM D1

FOR INFORMATION ONLY

MODEL: Default  
 FILE: \\naulc01\public\aw\_bec\paw.com\PIV\DOT\Documents\DOT\_Offices\Dir\dtdt\_1\Project\101023\CADD\Drawings\101023-Sub-A-Framing.dwg  
 PROJECT: 101023\CADD\Drawings\101023-Sub-A-Framing.dwg

USER NAME = Jacob.Roth	DESIGNED -	REVISED -
PLOT SCALE = 100,0000' / in.	DRAWN -	REVISED -
PLOT DATE = 3/23/2023	CHECKED -	REVISED -
	DATE -	REVISED -

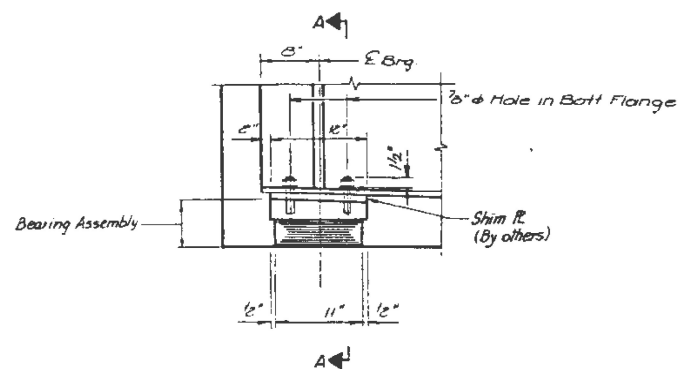
STATE OF ILLINOIS  
DEPARTMENT OF TRANSPORTATION

LOCATION 3: FRAMING PLAN  
WASHINGTON STREET OVER ILL 137 (LAKE FRONT FWY)

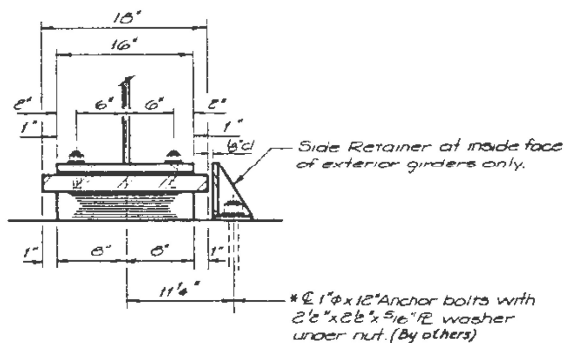
V.A.R. RTE.	SECTION	COUNTY	TOTAL SHEETS	SHEET NO.
VAR.	IL 137 22 BP	LAKE	25	18
CONTRACT NO. 62U17				
ILLINOIS FED. AID PROJECT				

SCALE: SHEET OF SHEETS STA. TO STA.





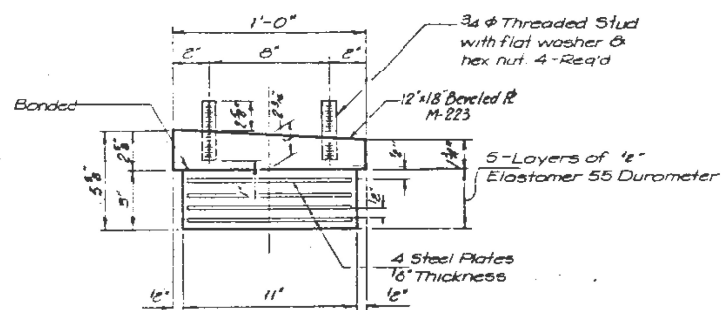
ELEVATION AT W. ABUT.



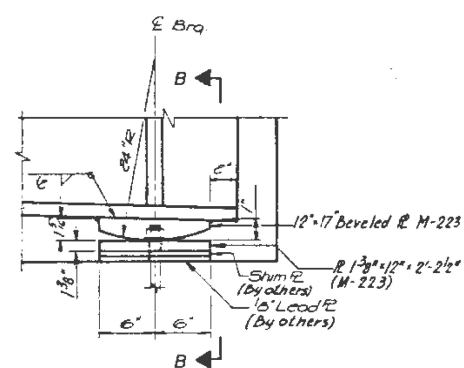
SECTION A-A

**TYPE I ELASTOMERIC EXP. BRG.**

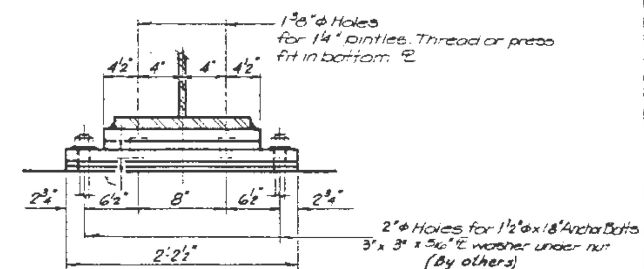
9 Required



BEARING ASSEMBLY



ELEVATION AT E. ABUT.



SECTION B-B

**FIXED BEARING**

9 Required

FOR INFORMATION ONLY

MODEL: Default  
FILE: h:\mfc\p\build\caw\bea\caw.com\FW\DOT\Documents\DOT\_Offices\Dir\rdt\_1\Project\1010023\Cadd\ata\Design\1010023-str-1-bn.cgm

USER NAME = Jacob.Roth	DESIGNED -	REVISED -
PLOT SCALE = 100,0000' / in.	DRAWN -	REVISED -
PLOT DATE = 3/23/2023	CHECKED -	REVISED -
	DATE -	REVISED -

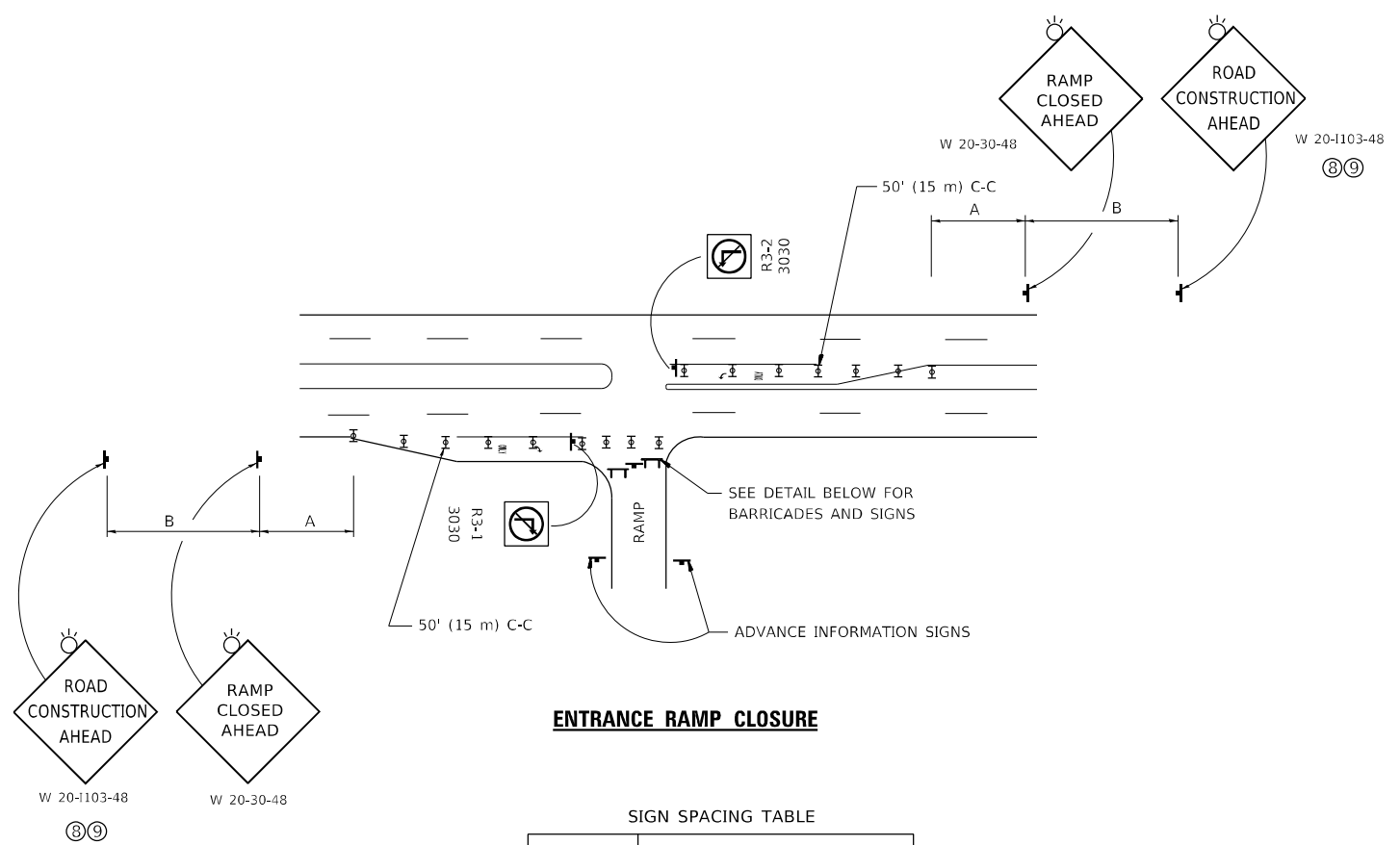
STATE OF ILLINOIS  
DEPARTMENT OF TRANSPORTATION

LOCATION 3: BEARING DETAILS  
WASHINGTON STREET OVER ILL 137 (LAKE FRONT FWY)

SCALE: SHEET OF SHEETS STA. TO STA.

V.A.R. RTE.	SECTION	COUNTY	TOTAL SHEETS	SHEET NO.
VAR.	IL 137 22 BP	LAKE	25	20
			CONTRACT NO. 62U17	
ILLINOIS FED. AID PROJECT				

MODEL Default  
FILE NAME: p:\projects\paw\_bentley.com\p\indot\documents\dot\office\dir\det\_1\project\1010231\cadd\data\design\drf\drfstd.dgn

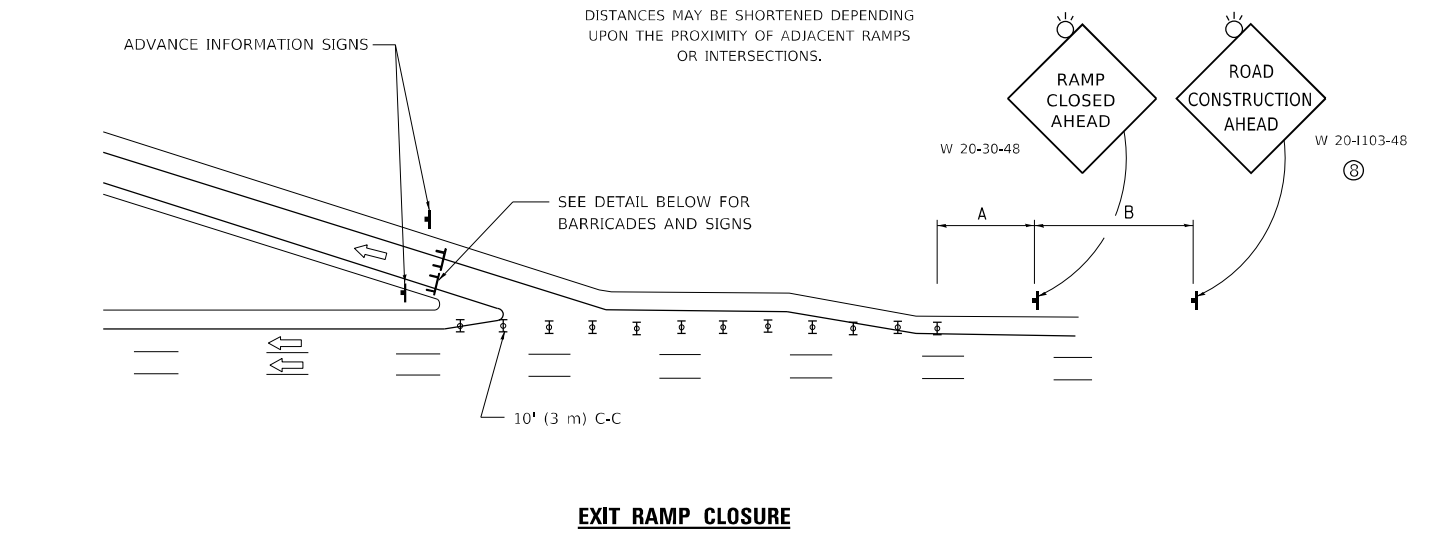


**ENTRANCE RAMP CLOSURE**

SIGN SPACING TABLE

FACILITY	DISTANCE BETWEEN SIGNS	
	A	B
EXPRESSWAY >24 HOURS	1000' (300 m)	1500' (450 m)
EXPRESSWAY ≤24 HOURS	500' (150 m)	500' (150 m)
ARTERIAL 55 MPH	500' (150 m)	500' (150 m)
ARTERIAL 50-45 MPH	350' (100 m)	350' (100 m)
ARTERIAL <45 MPH	200' (60 m)	200' (60 m)

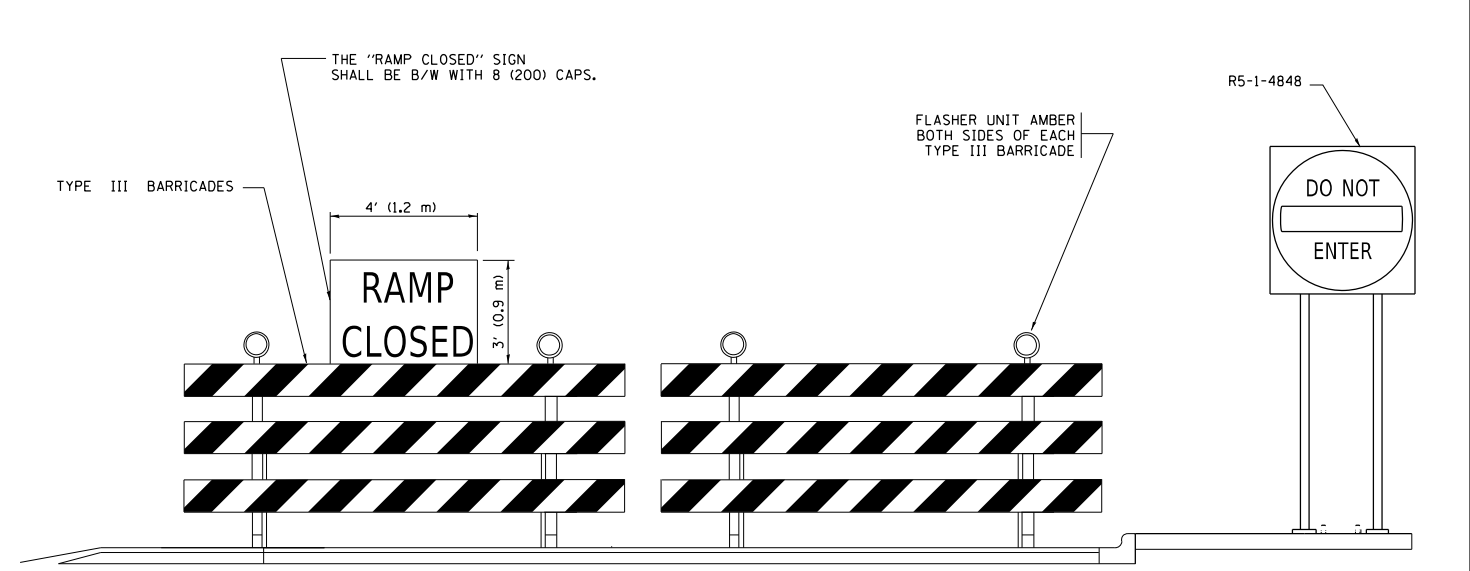
DISTANCES MAY BE SHORTENED DEPENDING UPON THE PROXIMITY OF ADJACENT RAMP OR INTERSECTIONS.



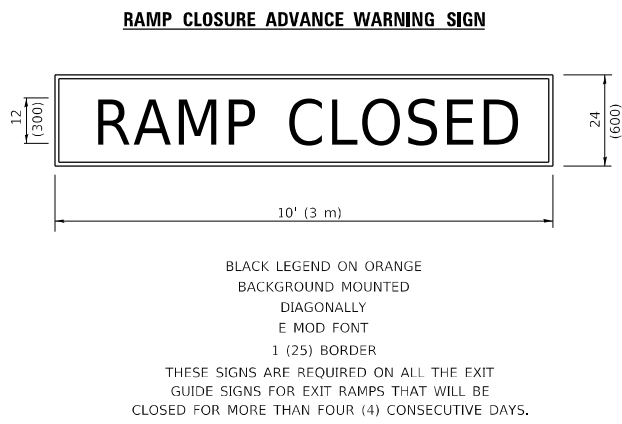
**EXIT RAMP CLOSURE**

**SYMBOLS**

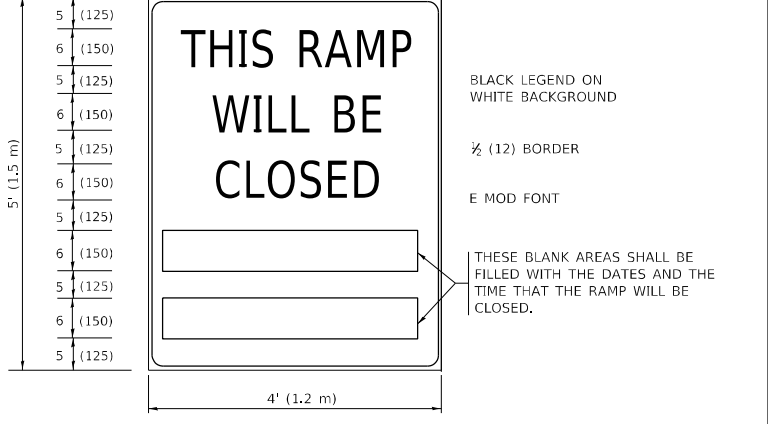
- ☐ TYPE II BARRICADE OR DRUM
- ☐ TYPE III BARRICADE WITH 2 FLASHING LIGHTS



**DETAIL FOR REQUIRED BARRICADES & SIGNS**



**RAMP CLOSURE ADVANCE WARNING SIGN**



**RAMP CLOSURE ADVANCE INFORMATION SIGN**

THESE SIGNS ARE REQUIRED ON BOTH SIDES OF THE RAMP, MINIMUM OF 1 WEEK IN ADVANCE OF THE CLOSURE.  
THESE SIGNS SHALL BE FABRICATED AND PAID FOR ACCORDING TO THE TEMPORARY INFORMATION SIGNING SPECIAL PROVISION

**GENERAL NOTES:**

- ① CONES MAY BE SUBSTITUTED FOR DRUMS OR TYPE II BARRICADES DURING DAY OPERATIONS. CONES SHALL BE A MINIMUM OF 28 (700) HIGH.
- ② VERTICAL BARRICADES SHALL NOT BE USED FOR RAMP CLOSURES.
- ③ A FLAGGER SHALL BE POSITIONED AT EACH CLOSED RAMP THAT IS OPEN TO CONSTRUCTION VEHICLES, PRECEDED BY A W20-7 FLAGGER WARNING SIGN.
- ④ ALL ROUTE MARKERS AND TRAILBLAZER ASSEMBLIES WHICH DIRECT MOTORISTS TO A CLOSED ENTRANCE RAMP SHALL BE COVERED WHEN THE RAMP IS CLOSED FOR MORE THAN FOUR (4) DAYS.
- ⑤ THE SIGNING AND BARRICADING WHICH IS REQUIRED BY THIS DETAIL SHALL BE INCLUDED IN THE COST OF TRAFFIC CONTROL AND PROTECTION (EXPRESSWAYS).
- ⑥ AUTHORIZATION FROM THE DISTRICT'S BUREAU OF TRAFFIC IS REQUIRED FOR ALL RAMP CLOSURES.
- ⑦ THE RAMP CLOSURE ADVANCE INFORMATION SIGNS SHALL BE ERECTED IF THE CLOSURE TIME EXCEEDS TWENTY-FOUR (24) HOURS. ADDITIONAL ADVANCE WARNING SIGNS ON EXIT GUIDE SIGNING WILL BE REQUIRED FOR EXIT RAMP CLOSURES THAT EXCEED FOUR (4) DAYS IN LENGTH.
- ⑧ ROAD CONSTRUCTION AHEAD SIGNS MAY BE OMITTED WHEN THIS DETAIL IS USED IN CONJUNCTION WITH OTHER TRAFFIC CONTROL THAT ALREADY INCLUDES A ROAD CONSTRUCTION AHEAD SIGN.
- ⑨ ARTERIAL ROAD CONSTRUCTION AHEAD SIGNS SHALL BE INSTALLED ON THE LEFT SIDE OF TRAFFIC IF THE MEDIAN IS MORE THAN 10 FT WIDE.

ALL DIMENSIONS ARE IN INCHES (MILLIMETERS) UNLESS OTHERWISE SHOWN.

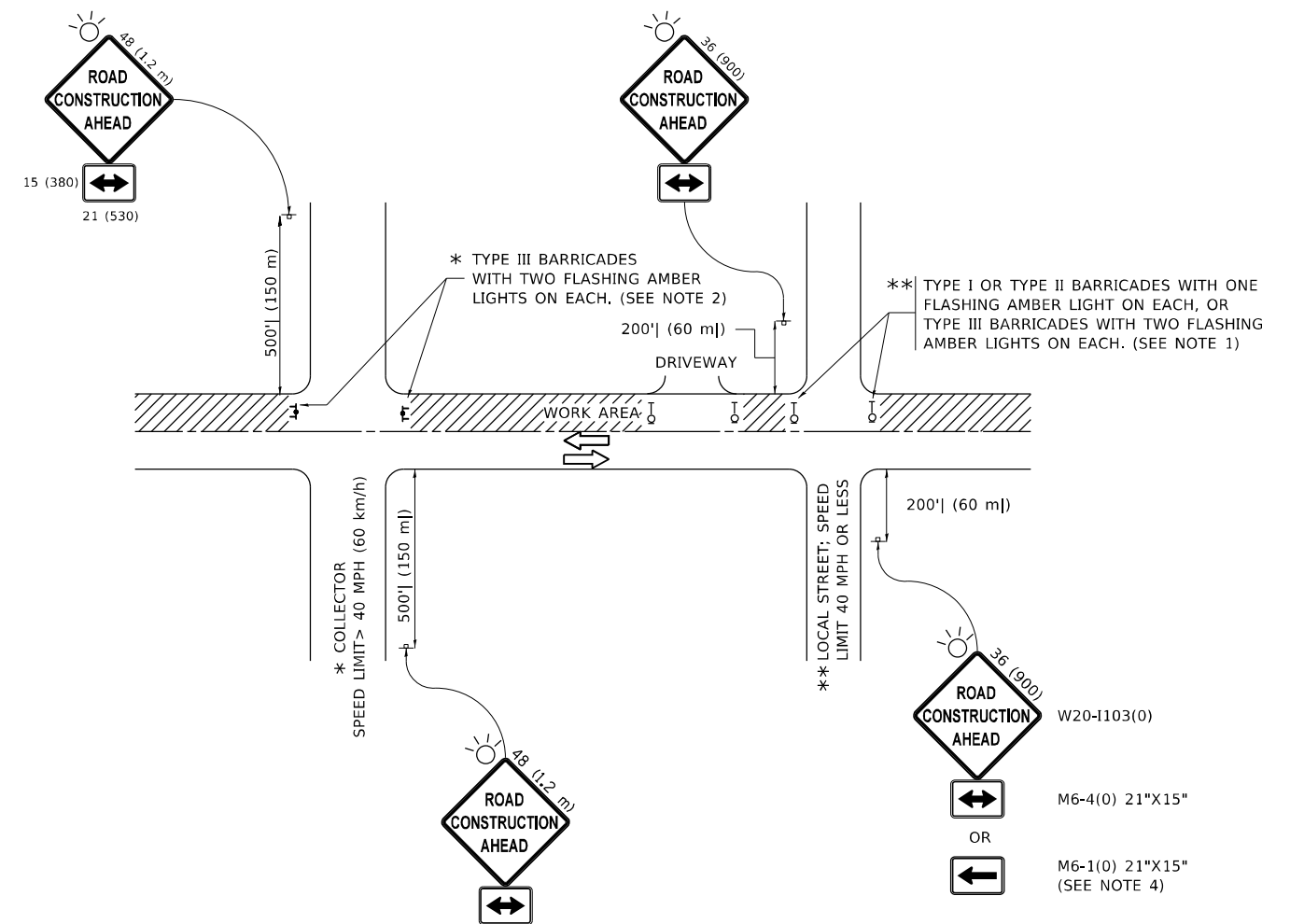
USER NAME = Jacob.Roth	DESIGNED - D.W.S.	REVISED - S.P.B._01-07
DRAWN -	REVISED - S.P.B._12-09	
PLOT SCALE = 100,0000' / in.	CHECKED -	REVISED - M.D._06-13
PLOT DATE = 3/23/2023	DATE - 02-83	REVISED - M.D._01-18

**STATE OF ILLINOIS  
DEPARTMENT OF TRANSPORTATION**

**ENTRANCE\_AND\_EXIT\_RAMP  
CLOSURE\_DETAILS**

SCALE: NONE SHEET 1 OF 1 SHEETS STA. TO STA.

VAR. RTE.	SECTION	COUNTY	TOTAL SHEETS	SHEET NO.
	IL 137 22 BP	LAKE	25	21
<b>TC-08</b>		CONTRACT NO. 62U17		
		ILLINOIS	FED. AID PROJECT	



**NOTES:**

1. SIDE ROAD WITH A SPEED LIMIT OF 40 MPH (60 km/h) OR LESS AS SHOWN ON THE DRAWING AND AS DIRECTED BY THE ENGINEER:
  - a) ONE "ROAD CONSTRUCTION AHEAD" SIGN 36 x 36 (900x900) WITH A FLASHER MOUNTED ON IT APPROXIMATELY 200' (60 m) IN ADVANCE OF THE MAIN ROUTE.
  - b) THE CLOSED PORTION OF THE MAIN ROUTE SHALL BE PROTECTED BY BLOCKING WITH TYPE I, TYPE II OR TYPE III BARRICADES, 1/3 OF THE CROSS SECTION OF THE CLOSED PORTION.
2. SIDE ROAD WITH A SPEED LIMIT GREATER THAN 40 MPH (60 km/h) AS SHOWN ON THE DRAWING AND AS DIRECTED BY THE ENGINEER:
  - a) ONE "ROAD CONSTRUCTION AHEAD" SIGN 48 x 48 (1.2 m x 1.2 m) WITH A FLASHER MOUNTED ON IT APPROXIMATELY 500' (150 m) IN ADVANCE OF THE MAIN ROUTE.
  - b) BLOCKING WITH TYPE III BARRICADES, 1/2 OF THE CROSS SECTION OF THE CLOSED PORTION.
3. CONES MAY BE SUBSTITUTED FOR BARRICADES OR DRUMS AT HALF THE SPACING DURING DAY OPERATIONS. CONES SHALL BE A MINIMUM OF 28 (710) IN HEIGHT.
4. SIGNING AND THE WORK ZONE, A SINGLE HEADED ARROW (M6-1) SHALL BE USED IN LIEU OF THE DOUBLE HEADED ARROW (M6-4).
5. WHEN WORK IS BEING PERFORMED ON A SIDE ROAD OR DRIVEWAY, FOLLOW THE APPLICABLE STANDARD(S). THE DIRECTIONAL ARROW (M6-1 OR M6-4) SHALL BE COVERED OR REMOVED WHEN NO LONGER CONSISTENT WITH THE TRAFFIC CONTROL SET-UP.
6. ADVANCE WARNING SIGNS ARE TO BE OMITTED ON DRIVEWAYS UNLESS OTHERWISE SPECIFIED IN THE PLANS OR BY THE ENGINEER.
7. THE TRAFFIC CONTROL AND PROTECTION FOR SIDE ROADS, INTERSECTIONS, AND DRIVEWAYS SHALL BE INCLUDED IN THE COST OF SPECIFIED TRAFFIC CONTROL STANDARDS OR ITEMS.

All dimensions are in inches (millimeters) unless otherwise shown.

MODEL: Default  
 FILE NAME: p:\bulletect-aw-beachey.com\P\W\DOT\Documents\DOT Office\Dir\rdet\_1\Project\101023\CADD\data\Design\BtRtSt.dgn

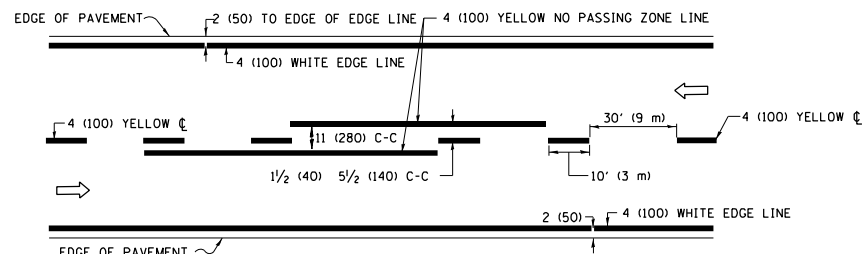
USER NAME = Jacob.Roth	DESIGNED - L.H.A.	REVISED - A. HOUSEH 10-15-96
PLOT SCALE = 100,0000' / in.	CHECKED -	REVISED - T. RAMMACHER 01-06-00
PLOT DATE = 3/23/2023	DATE - 06-89	REVISED - A. SCHUETZE 07-01-13
		REVISED - A. SCHUETZE 09-15-16

**STATE OF ILLINOIS  
DEPARTMENT OF TRANSPORTATION**

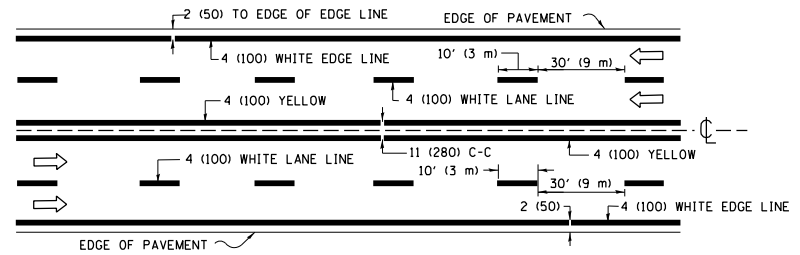
**TRAFFIC CONTROL AND PROTECTION FOR  
SIDE ROADS, INTERSECTIONS, AND DRIVEWAYS**

SCALE: NONE SHEET 1 OF 1 SHEETS STA. TO STA.

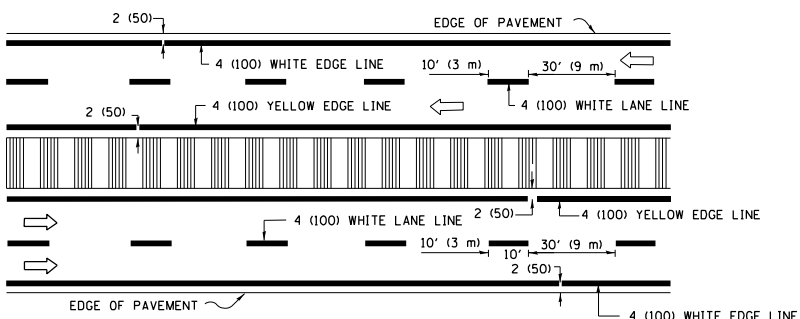
VAR. RTE.	SECTION	COUNTY	TOTAL SHEETS	SHEET NO.
	IL 137 22 BP	LAKE	25	22
<b>TC-10</b>			CONTRACT NO. 62U17	
ILLINOIS FED. AID PROJECT				



**2-LANE ROADWAY**

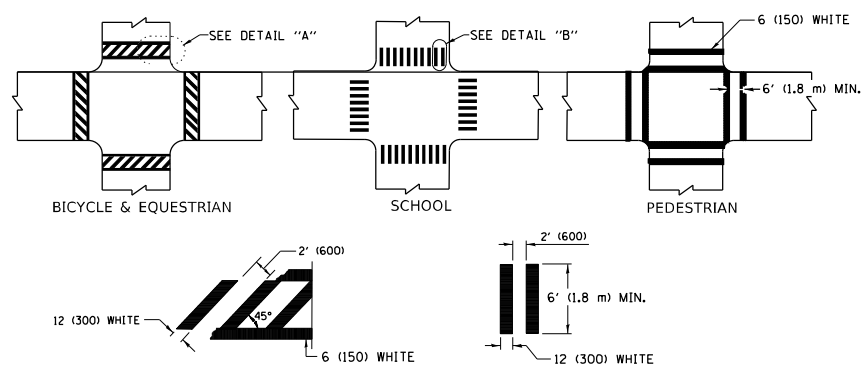


**MULTI-LANE UNDIVIDED**



**MULTI-LANE DIVIDED WITH MEDIAN**

**TYPICAL LANE AND EDGE LINE MARKING**

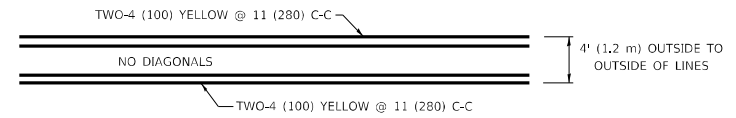


**DETAIL "A"**

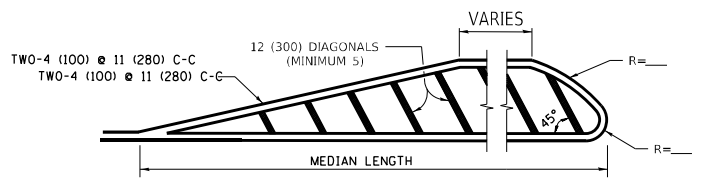
**DETAIL "B"**

**TYPICAL CROSSWALK MARKING**

\* MARKINGS SHALL BE INSTALLED PARALLEL TO THE CENTERLINE OF THE ROAD WHICH IT CROSSES

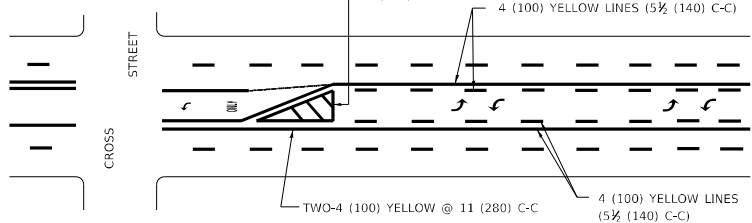


**4' (1.2 m) WIDE MEDIANS ONLY**



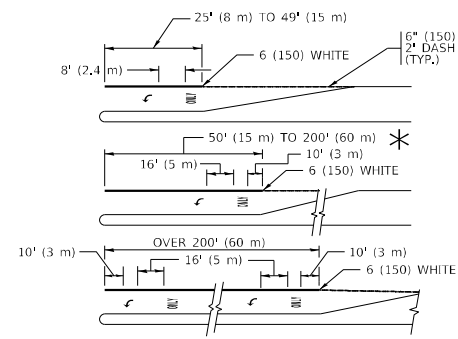
**MEDIANS OVER 4' (1.2 m) WIDE**

DIAGONAL LINE SPACING: 50' (15 m) C-C (LESS THAN 30MPH (50 km/h))  
75' (25 m) C-C 30MPH (50 km/h) TO 45MPH (70 km/h)  
150' (45 m) C-C (MORE THAN 45MPH (70 km/h))



**MEDIAN WITH TWO-WAY LEFT TURN LANE**

**TYPICAL PAINTED MEDIAN MARKING**

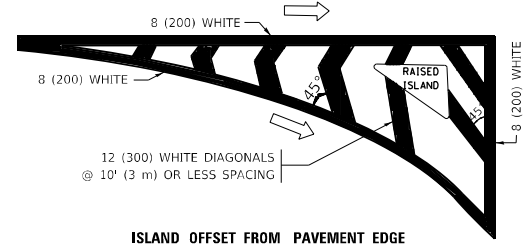


FULL SIZE LETTERS 8' (2.4 m) AND ARROWS SHALL BE USED.  
AREA = 15.6 SQ. FT. (1.5 m<sup>2</sup>) ONLY AREA = 20.8 SQ. FT. (1.9 m<sup>2</sup>)

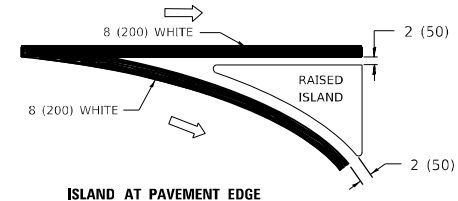
\* TURN LANES IN EXCESS OF 400' (120 m) IN LENGTH MAY HAVE AN ADDITIONAL SET OF ARROW - "ONLY" INSTALLED MIDWAY BETWEEN THE OTHER TWO SETS OF ARROW - "ONLY".

**TYPICAL LEFT (OR RIGHT) TURN LANE**

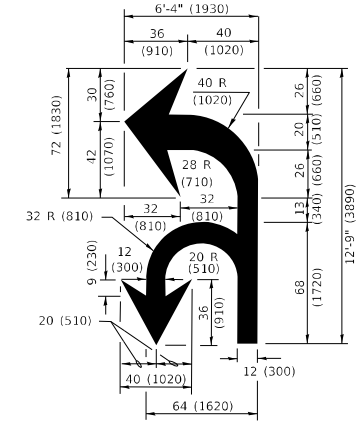
**TYPICAL TURN LANE MARKING**



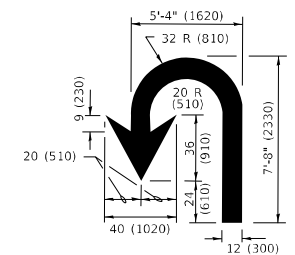
**ISLAND OFFSET FROM PAVEMENT EDGE**



**TYPICAL ISLAND MARKING**



**COMBINATION LEFT AND U-TURN**



**LANE REDUCTION TRANSITION**

\* LANE REDUCTION ARROWS REQUIRED AT SPEEDS OF 45 MPH OR GREATER OR WHEN SPECIFIED IN PLANS.

D(FT)	SPEED LIMIT
345	30
425	35
500	40
580	45
665	50
750	55

TYPE OF MARKING	WIDTH OF LINE	PATTERN	COLOR	SPACING / REMARKS
CENTERLINE ON 2 LANE PAVEMENT	4 (100)	SKIP-DASH	YELLOW	10' (3 m) LINE WITH 30' (9 m) SPACE
CENTERLINE ON MULTI-LANE UNDIVIDED PAVEMENT	2 @ 4 (100)	SOLID	YELLOW	11 (280) C-C
NO PASSING ZONE LINES: FOR ONE DIRECTION FOR BOTH DIRECTIONS	4 (100) 2 @ 4 (100)	SOLID SOLID	YELLOW YELLOW	5/2 (140) C-C FROM SKIP-DASH CENTERLINE 11 (280) C-C OMIT SKIP-DASH CENTERLINE BETWEEN
LANE LINES	4 (100) 5 (125) ON FREEWAYS	SKIP-DASH SKIP-DASH	WHITE WHITE	10' (3 m) LINE WITH 30' (9 m) SPACE
DOTTED LINES (EXTENSIONS OF CENTER, LANE OR TURN LANE MARKINGS)	SAME AS LINE BEING EXTENDED	SKIP-DASH	SAME AS LINE BEING EXTENDED	2' (600) LINE WITH 6' (1.8 m) SPACE
EDGE LINES	4 (100)	SOLID	YELLOW-LEFT WHITE-RIGHT	OUTLINE MEDIANS IN YELLOW
TURN LANE MARKINGS	6 (150) LINE; FULL SIZE LETTERS & SYMBOLS (8' (2.4m))	SOLID	WHITE	SEE TYPICAL TURN LANE MARKING DETAIL
TWO WAY LEFT TURN MARKING	2 @ 4 (100) EACH DIRECTION 8' (2.4m) LEFT ARROW	SKIP-DASH AND SOLID IN PAIRS	YELLOW WHITE	10' (3 m) LINE WITH 30' (9 m) SPACE FOR SKIP-DASH; 5/2 (140) C-C BETWEEN SOLID LINE AND SKIP-DASH LINE SEE TYPICAL TWO-WAY LEFT TURN MARKING DETAIL
CROSSWALK LINES (PEDESTRIAN) A. DIAGONALS (BIKE & EQUESTRIAN) B. LONGITUDINAL BARS (SCHOOL)	2 @ 6 (150) 12 (300) @ 45° 12 (300) @ 90°	SOLID SOLID SOLID	WHITE WHITE WHITE	NOT LESS THAN 6' (1.8 m) APART 2' (600) APART 2' (600) APART SEE TYPICAL CROSSWALK MARKING DETAILS.
STOP LINES	24 (600)	SOLID	WHITE	PLACE 4' (1.2 m) IN ADVANCE OF AND PARALLEL TO CROSSWALK, IF PRESENT. OTHERWISE, PLACE AT DESIRED STOPPING POINT, PARALLEL TO CROSSROAD CENTERLINE, WHERE POSSIBLE
PAINTED MEDIANS	2 @ 4 (100) WITH 12 (300) DIAGONALS @ 45° NO DIAGONALS USED FOR 4' (1.2 m) WIDE MEDIANS	SOLID	YELLOW: TWO WAY TRAFFIC WHITE: ONE WAY TRAFFIC	11 (280) C-C FOR THE DOUBLE LINE SEE TYPICAL PAINTED MEDIAN MARKING.
GORE MARKING AND CHANNELIZING LINES	8 (200) WITH 12 (300) DIAGONALS @ 45°	SOLID	WHITE	DIAGONALS: 15' (4.5 m) C-C (LESS THAN 30MPH (50 km/h)) 20' (6 m) C-C 30MPH (50 km/h) TO 45MPH (70 km/h) 30' (9 m) C-C (OVER 45MPH (70 km/h))
RAILROAD CROSSING	24 (600) TRANSVERSE LINES: "RR" IS 6' (1.8 m) LETTERS; 16 (400) LINE FOR "X"	SOLID	WHITE	SEE STATE STANDARD 780001 AREA OF: "R"=3.6 SQ. FT. (0.33 m <sup>2</sup> ) EACH "X"=54.0 SQ. FT. (5.0 m <sup>2</sup> )
SHOULDER DIAGONALS (REQUIRED FOR SHOULDERS ≥ 8')	12 (300) @ 45°	SOLID	WHITE - RIGHT YELLOW - LEFT	50' (15 m) C-C (LESS THAN 30MPH (50 km/h)) 75' (25 m) C-C (30 MPH (50 km/h) TO 45MPH (70 km/h)) 150' (45 m) C-C (OVER 45MPH (70 km/h))
U TURN ARROW	SEE DETAIL	SOLID	WHITE	16.3 SF
2 ARROW COMBINATION LEFT AND U TURN	SEE DETAIL	SOLID	WHITE	30.4 SF

FOR FURTHER DETAILS ON PAVEMENT MARKING REFER TO STANDARD SPECIFICATIONS FOR ROAD AND BRIDGE CONSTRUCTION AND STATE STANDARD 780001.

All dimensions are in inches (millimeters) unless otherwise shown.

MODEL: Default  
FILE NAME: p:\buildnet-new\bea\paw.com\PIV\DOT\Documents\DOT Office\Dist\ref: 11\project\11023\CAD\data\Design\Dist\Std.dgn

USER NAME = Jacob.Roth	DESIGNED - EVERS	REVISED - C. JUCIUS 09-09-09
PLOT SCALE = 100,0000' / in.	CHECKED -	REVISED - C. JUCIUS 07-01-13
PLOT DATE = 3/23/2023	DATE - 03-19-90	REVISED - C. JUCIUS 12-21-15
		REVISED - C. JUCIUS 04-12-16

**STATE OF ILLINOIS  
DEPARTMENT OF TRANSPORTATION**

**DISTRICT ONE  
TYPICAL PAVEMENT MARKINGS**

SCALE: NONE SHEET 1 OF 2 SHEETS STA. TO STA.

VAR. RTE.	SECTION	COUNTY	TOTAL SHEETS	SHEET NO.
VAR. IL 137 22 BP	LAKE	25	23	
<b>TC-13</b>		CONTRACT NO. 62U17		
ILLINOIS FED. AID PROJECT				

MODEL: Default  
 FILE NAME: p:\idirect-pw-bead\paw.com\PIV\DOT\Documents\DOT Office\Direct: 11\project\101023\CADD\data\Design\BdF5Ed.dgn

**ROUTE MARKERS**

FOR U.S. ROUTES  
M1-40-2424

FOR ILLINOIS ROUTES  
M1-50-2424

R.R. UNMARKED ROUTES  
SPECIAL 24" x 18" VARIABLE  
4" BLACK LETTERS ON WHITE  
REFLECTIVE BACKGROUND

**ARROWS SIGNS**

M5-1L-2115

M5-1R-2115

M6-1-2115

M6-2-2115

M6-3-2115

**CARDINAL DIRECTION & DETOUR SIGNS**

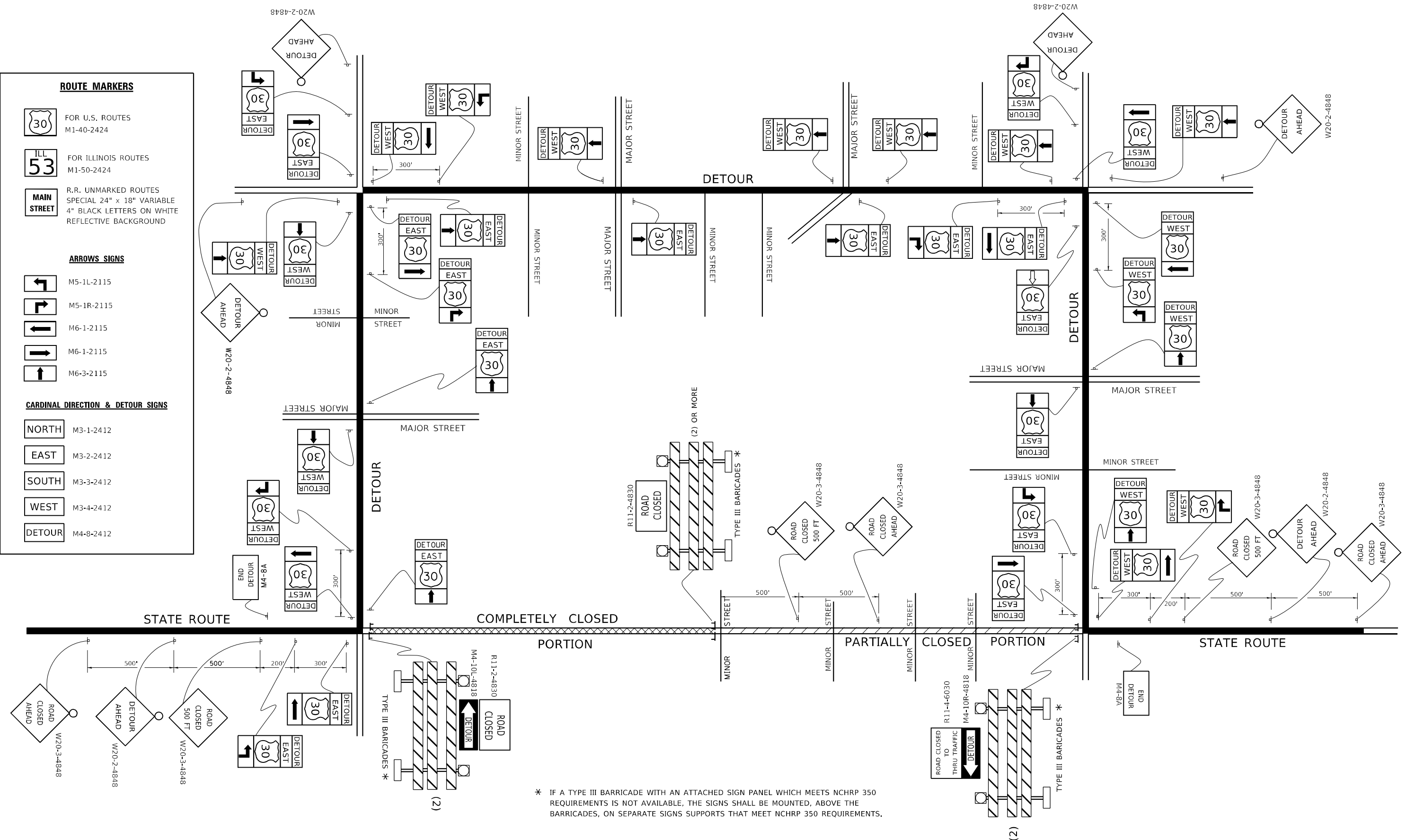
NORTH M3-1-2412

EAST M3-2-2412

SOUTH M3-3-2412

WEST M3-4-2412

DETOUR M4-8-2412



\* IF A TYPE III BARRICADE WITH AN ATTACHED SIGN PANEL WHICH MEETS NCHRP 350 REQUIREMENTS IS NOT AVAILABLE, THE SIGNS SHALL BE MOUNTED, ABOVE THE BARRICADES, ON SEPARATE SIGNS SUPPORTS THAT MEET NCHRP 350 REQUIREMENTS.

USER NAME = Jacob,Roth	DESIGNED -	REVISED - 10-18-02
PLOT SCALE = 100,0000' / in.	DRAWN -	REVISED - R, BORO 09-14-09
PLOT DATE = 3/23/2023	CHECKED -	REVISED -
	DATE -	REVISED -

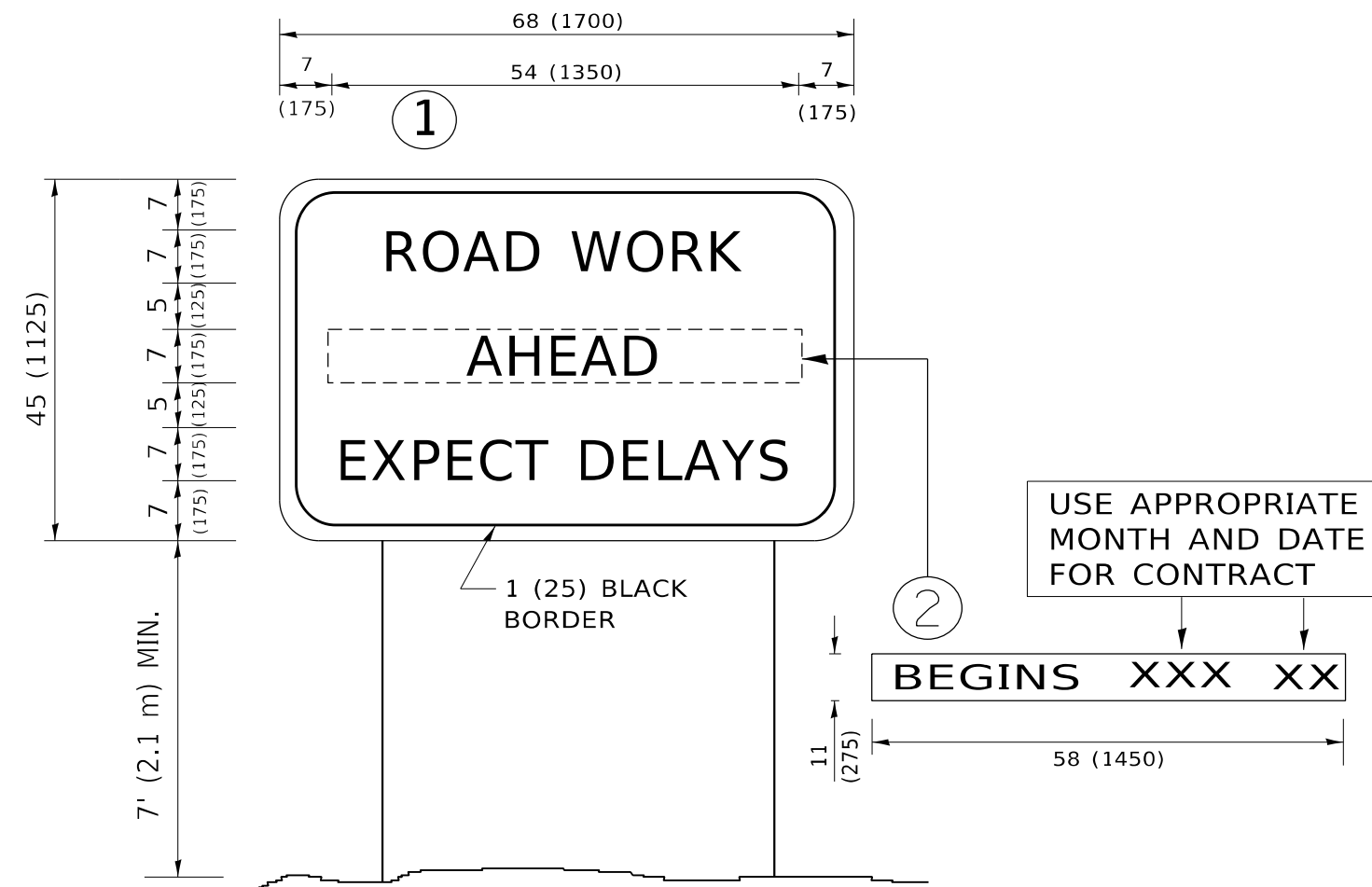
**STATE OF ILLINOIS  
 DEPARTMENT OF TRANSPORTATION**

**DETOUR SIGNING  
 FOR CLOSING STATE HIGHWAYS**

SCALE: NONE SHEET 1 OF 1 SHEETS STA. TO STA.

VAR. RTE.	SECTION	COUNTY	TOTAL SHEETS	SHEET NO.
VAR.	IL 137 22 BP	LAKE	25	24
<b>TC-21</b>		CONTRACT NO. 62U17		
ILLINOIS FED. AID PROJECT				





**NOTES:**

1. USE BLACK LETTERING ON ORANGE BACKGROUND.
2. ERECT SIGNS IN ADVANCE OF THE LOCATION FOR THE "ROAD CONSTRUCTION AHEAD" SIGN AT LOCATIONS AS DIRECTED BY THE ENGINEER.
3. ERECT SIGN ① WITH INSTALLED PANEL ② ONE WEEK PRIOR TO THE START OF CONSTRUCTION.
4. REMOVE PANEL ② SOON AFTER THE START OF CONSTRUCTION.
5. SEE SPECIAL PROVISION FOR "TEMPORARY INFORMATION SIGNING" FOR ADDITIONAL INFORMATION.
6. ONE SIGN ASSEMBLY EQUALS 25.70 SQ. FT. (2.3 SQ. M.)
7. SHALL BE PAID FOR AS TEMPORARY INFORMATION SIGNING.

ALL DIMENSIONS ARE IN INCHES (MILLIMETERS) UNLESS OTHERWISE SHOWN.

MODEL: Default  
 FILE NAME: p:\ultra-cad\aw-bee\aw.com\p\w\DOT\Documents\DOT Office\Dir\rdet\_1\Project\101023\CADD\data\Design\BtESt.dgn

USER NAME = Jacob.Roth	DESIGNED -	REVISED - R. MIRS 09-15-97
PLOT SCALE = 100,0000 ' / in.	DRAWN -	REVISED - R. MIRS 12-11-97
PLOT DATE = 3/23/2023	CHECKED -	REVISED - T. RAMMACHER 02-02-99
	DATE -	REVISED - C. JUCIUS 01-31-07

**STATE OF ILLINOIS  
DEPARTMENT OF TRANSPORTATION**

**ARTERIAL ROAD  
INFORMATION SIGN**

SCALE: NONE SHEET 1 OF 1 SHEETS STA. TO STA.

VAR. RTE.	SECTION	COUNTY	TOTAL SHEETS	SHEET NO.
VAR.	IL 137 22 BP	LAKE	25	25
TC-22			CONTRACT NO. 62U17	
ILLINOIS FED. AID PROJECT				