

STATE OF ILLINOIS
DEPARTMENT OF TRANSPORTATION

F.A.S. RTE.	SECTION	COUNTY	TOTAL SHEETS	SHEET NO.
2400	(106,108)I; (107)I-1	KNOX	14	1
		ILLINOIS	CONTRACT NO. 68H69	

PROPOSED HIGHWAY PLANS

FAS ROUTE 2400 (US 150)
SECTION (106,108)I; (107)I-1
KNOX COUNTY

INDEX OF SHEETS

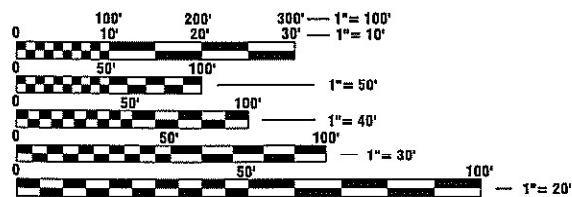
- 1 COVER SHEET
- 2 COMMITMENTS, GENERAL NOTES, AND PROJECT SPECIFIC NOTES
- 3 SUMMARY OF QUANTITIES
- 4 SCHEDULE OF QUANTITIES
- 5 TYPICAL SECTIONS
- 6 LINE DIAGRAM
- 7-14 PROPOSED PLAN VIEW

HIGHWAY STANDARDS

- 000001-08
- 482011-03
- 701201-05
- 701336-07
- 701901-08

DESIGN DESIGNATION

- US 150: MAJOR COLLECTOR
- ADT: 2000 (2021)
- SU: 90
- MU: 80



FULL SIZE PLANS HAVE BEEN PREPARED USING STANDARD ENGINEERING SCALES. REDUCED SIZED PLANS WILL NOT CONFORM TO STANDARD SCALES. IN MAKING MEASUREMENTS ON REDUCED PLANS, THE ABOVE SCALES MAY BE USED.

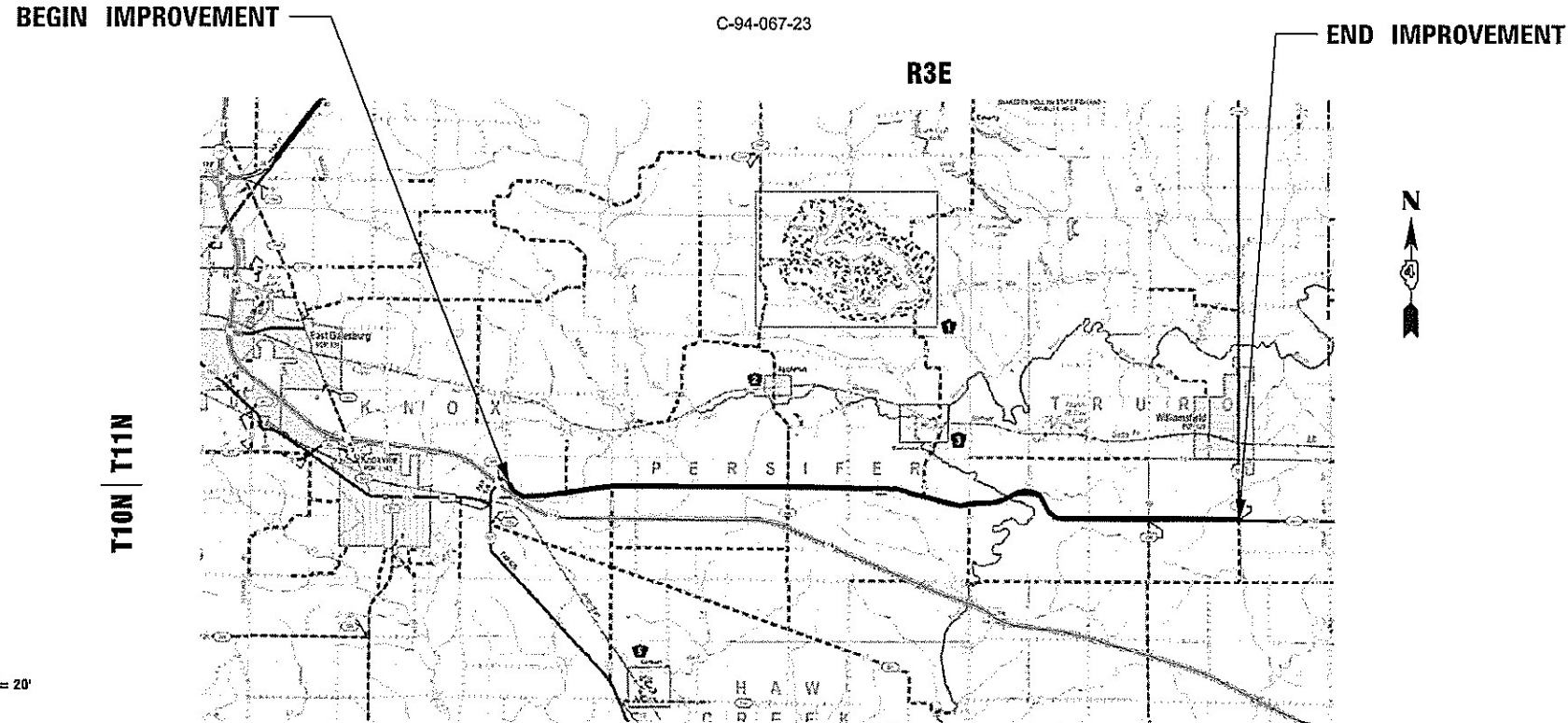
J.U.L.I.E.
JOINT UTILITY LOCATION INFORMATION FOR EXCAVATORS
1-800-892-0123
OR 811

PROJECT ENGINEER: BEN TELLEFSON (309) 671-3333
PROJECT MANAGER: WILL MOSER (309) 671-3333
CATALOG NO. 036420-00D
CONTRACT NO. 68H69

MARK C. LEE DATE
REGISTERED PROFESSIONAL ENGINEER
STATE OF ILLINOIS NO. 062-060864
LICENSE EXPIRES NOVEMBER 30, 2023

GROSS LENGTH = 65,535 FT. = 12.4 MILES
NET LENGTH = 65,535 FT. = 12.4 MILES

KLINGNER & ASSOCIATES, P.C.
Engineers • Architects • Surveyors
www.klingner.com
Galesburg, Illinois
49 North Prairie Street
309.342.4042
Quincy, IL Hannibal, MO
Burlington, IA Peña, IA Columbia, MO
Davenport, IA Carbondale, IL
DESIGN FIRM NO. 184-2738



PROJECT DESCRIPTION:

EDGE LINE REPAIR ALONG US 150 FROM I 74 INTERSECTION TO IL 180.

STATE OF ILLINOIS
DEPARTMENT OF TRANSPORTATION
SUBMITTED March 23, 2023
Kensil A. Darnett, Inc.
REGIONAL ENGINEER
May 12, 2023
Scott A. Etk
ENGINEER OF DESIGN AND ENVIRONMENT
May 12, 2023
Stephen M. Smith
DIRECTOR OF HIGHWAYS PROJECT IMPLEMENTATION

PRINTED BY THE AUTHORITY OF THE STATE OF ILLINOIS

COMMITMENTS

COMMITMENTS ARE NOT TO BE ALTERED WITHOUT THE WRITTEN APPROVAL OF ALL PARTIES TO WHICH THE COMMITMENT WAS MADE.

THERE ARE NO COMMITMENTS INCLUDED IN THIS PROJECT.

ENVIRONMENTAL REVIEWS

PRIOR TO THE USE OF ANY PROPOSED BORROW AREAS, USE AREAS (TEMPORARY ACCESS ROADS, DETOURS, RUN-AROUNDS, ETC.) AND /OR WASTE AREAS, THE CONTRACTOR SHALL FILE THE REQUIRED ENVIRONMENTAL RESOURCE REQUEST SURVEYS ACCORDING TO SECTION 107.22 OF THE STANDARD SPECIFICATIONS. THESE SURVEYS ARE REQUIRED IN ORDER FOR THE DEPARTMENT TO CONDUCT CULTURAL AND BIOLOGICAL RESOURCE SURVEYS FOR THE PROPOSED SITE.

THE REQUIRED ENVIRONMENTAL RESOURCE DOCUMENTATION SHALL INCLUDE THE FOLLOWING:

- BDE FORM 2289 (CULTURAL AND NATURAL RESOURCE REVIEW OF BORROW AREAS)
- BDC FORM 2290 (WASTE/USE AREA REVIEW)
- A LOCATION MAP SHOWING THE SIZE LIMITS AND LOCATION OF THE USE AREA
- COLOR PHOTOGRAPHS DEPICTING THE USE AREA
- BORROW AREA ENTRY AGREEMENT FORM-D4 PI0101

PRIOR TO ANY WASTE MATERIALS BEING REMOVED FROM THE CONSTRUCTION SITE THE REQUIRED ENVIRONMENTAL RESOURCE SURVEYS SHALL BE OBTAINED AND FILED BY THE CONTRACTOR. EXCESS WASTE PRODUCTS REMOVED FROM THE CONSTRUCTION SITE SHALL BE DISPOSED OF AS REQUIRED IN SECTION 202.03 OF THE STANDARD SPECIFICATIONS.

ANY PROTRUDING METAL BARS SHALL BE REMOVED PRIOR TO THE DISPOSAL OF BROKEN CONCRETE AT APPROVED DISPOSAL SITES.

PLEASE NOTE THAT A MINIMUM OF TWO WEEKS SHALL BE ALLOWED FOR THE DISTRICT TO OBTAIN THE REQUIRED WASTE SITE ENVIRONMENTAL CLEARANCES AND SIX WEEKS FOR THE REQUIRED BORROW SITE ENVIRONMENTAL CLEARANCES.

PROJECT SPECIFIC NOTES

1. LONGITUDINAL JOINT REPAIR

THIS WORK SHALL INCLUDE ALL LABOR, EQUIPMENT, AND MATERIAL REQUIRED TO MILL OUT AN AREA ALONG AND EITHER SIDE OF AN EXISTING PAVEMENT LONGITUDINAL JOINT AND REPLACEMENT WITH HOT-MIX ASPHALT (HMA). THE REPLACEMENT HMA MATERIAL SHALL BE AS SPECIFIED IN THE HMA MIXTURES DESIGN TABLE IN THE PLANS. THE REMOVAL SHALL BE DONE WITH A COLD MILLING MACHINE OF SUFFICIENT SIZE AND WEIGHT TO REMOVE THE PAVEMENT DEPTH OF THREE INCHES (3") AND A WIDTH OF THREE FEET (3') IN A SINGLE OPERATION; SKID STEER MOUNTED MILLS WILL NOT BE ALLOWED. AFTER COLD MILLING THE EXISTING JOINT, ALL LOOSE MATERIAL SHALL BE REMOVED WITH A MECHANICAL SWEEPER OR VACUUM, THEN AIR BLAST CLEANED TO THE SATISFACTION OF THE ENGINEER.

PRIOR TO PLACEMENT OF THE HMA MATERIAL, THE MILLED TRENCH SHALL BE PRIMED IN ACCORDANCE WITH ARTICLE 406.05 OF THE STANDARD SPECIFICATIONS USING AN SS-1HP BITUMINOUS MATERIAL. THE PRIME SHALL BE APPLIED AT A RESIDUAL RATE OF 0.08 LB/SQ FT BY MEANS OF MECHANICAL DISTRIBUTOR AND SHALL BE PLACED ON ALL SURFACES OF THE MILLED TRENCH.

THE HMA MIXTURES AND DENSITY CONTROL LIMITS SHALL CONFORM TO ARTICLE 1030 OF THE STANDARD SPECIFICATIONS. PLACEMENT SHALL BE IN A SINGLE LIFT BY MACHINE METHODS AND SHALL MATCH PROFILE OF THE EXISTING PAVEMENT AFTER FINAL COMPACTION. COMPACTION SHALL BE ACCOMPLISHED USING A VIBRATORY ROLLER THAT CONFORMS TO THE APPLICABLE SECTIONS OF ARTICLE 1101.01 OF THE STANDARD SPECIFICATIONS.

THE CONTRACTOR SHALL FILL ALL TRENCHES WITH HMA IN THE SAME DAY THEY ARE MILLED. NO OPEN TRENCH WILL BE ALLOWED TO REMAIN OVERNIGHT.

THIS WORK WILL BE PAID FOR AT THE CONTRACT UNIT PRICE PER FOOT FOR LONGITUDINAL JOINT REPAIR.

HOT-MIX ASPHALT MIXTURE REQUIREMENTS

THE FOLLOWING MIXTURE REQUIREMENTS ARE APPLICABLE FOR THIS PROJECT

LOCATION(S)	MAINLINE
MIXTURE USE(S):	SURFACE
PG:	SRS 76-28
DESIGN AIR VOIDS:	4% N70
MIXTURE COMPOSITION:	POLYMERIZED IL 9.5
FRICTION AGGREGATE:	MIX D
MIXTURE WEIGHT:	112.0 LB/SY/IN
QUALITY MANAGEMENT PROGRAM:	QC/QA
SUBLOT SIZE:	N/A
MATERIAL TRANSFER DEVICE:	NO

NOTES:

1) INDIVIDUAL LIFT THICKNESS OF EACH MIX TYPE WILL BE NO LESS THAN 3 TIMES NOMINAL MAXIMUM AGGREGATE SIZE AND NO MORE THAN 6 TIMES NOMINAL MAXIMUM.

2) FOR DESIGN PURPOSES, MIXTURE WEIGHT FOR ALL MIXES IS DETERMINED TO BE 112.0 LB./S.Y./IN., UNLESS OTHERWISE NOTED.

THE HMA MATERIAL SHALL MATCH THE ELEVATION OF THE SURROUNDING PAVEMENT AFTER FINAL COMPACTION. BUMPS GREATER THAN 1/4", MEASURED WITH A 16' STRAIGHT EDGE, LEFT AFTER COMPACTION SHALL BE REMOVED WITH PAVEMENT SURFACE GRINDING EQUIPMENT IN ACCORDANCE WITH ARTICLE 1101.04 OF THE STANDARD SPECIFICATION.

RATES OF APPLICATION

HOT-MIX ASPHALT:	
BITUMINOUS MATERIALS (TACK COAT)	0.08 POUND / SQ FT (SEE ARTICLE 406.05)
SURFACE / BINDER (112 LBS)	0.056 TON / SQ YD * IN

MODEL: Default FILE NAME: G:\11files\11081 IDOT - DIST 4 - PTB 201.03\Work Order 15 - FY 2023 Patching\11.Transportation\68H69 IUS 150 Edgeline\CAD Sheets\IUS 150 - 002 Notes.dgn



USER NAME = rbailey	DESIGNED - RTB	REVISED -
	DRAWN - RTB	REVISED -
PLOT SCALE = 100.0000' / in.	CHECKED - MCL	REVISED -
PLOT DATE = 3/21/2023	DATE - 03/21/2023	REVISED -

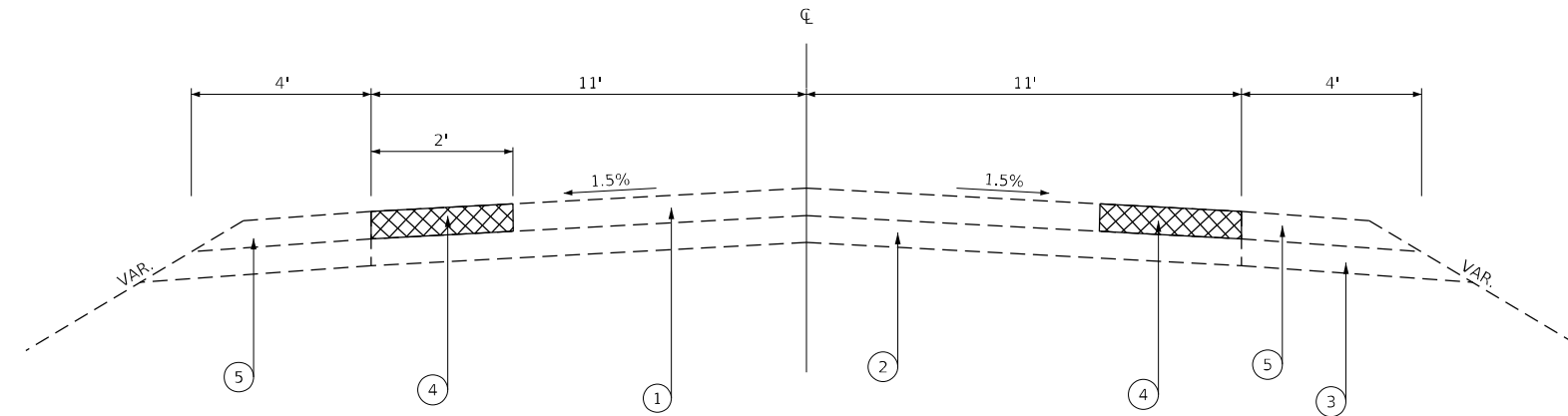
**STATE OF ILLINOIS
DEPARTMENT OF TRANSPORTATION**

**COMMITMENTS, GENERAL NOTES
AND PROJECT SPECIFIC NOTES**

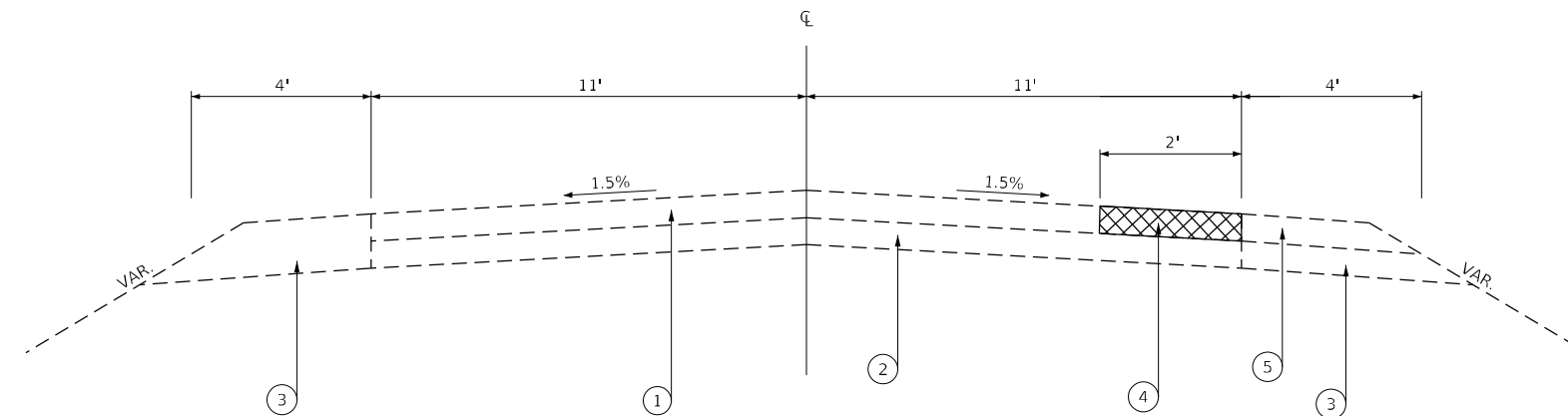
SCALE: NONE SHEET 1 OF 1 SHEETS STA. TO STA.

F.A.S. RTE.	SECTION	COUNTY	TOTAL SHEETS	SHEET NO.
2400	(106, 108)I: (107)I-1	KNOX	14	2
CONTRACT NO. 68H69				
ILLINOIS FED. AID PROJECT				

US_150
 STA (328+90 TO 359+20) LT/RT
 STA (369+59 TO 385+86) LT/RT
 STA (426+61 TO 456+23) LT/RT



US_150
 STA (389+53 TO 415+20) RT



- ① EXISTING HMA OVERLAY
- ② EXISTING P.C.C PAVEMENT
- ③ EXISTING AGGREGATE SHOULDER
- ④ LONGITUDINAL JOINT REPAIR
- ⑤ AGGREGATE WEDGE SHOULDER TY B

MODEL: Default
 FILE NAME: C:\Users\11081.IDOT\Desktop\18_Transportation\68H69 (US_150_Edgerline)\CAD_Sheets\US_150_005_Typical_Section.dgn

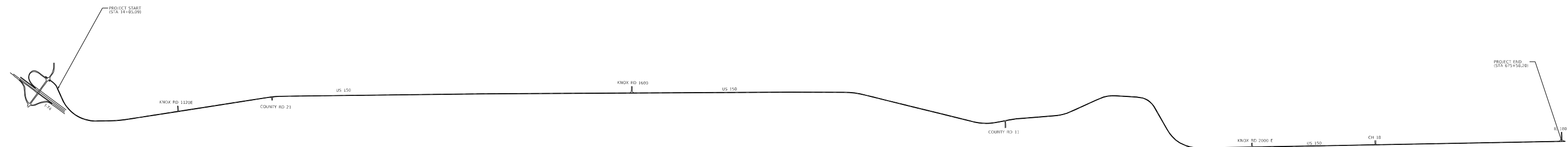
KLINGNER & ASSOCIATES, P.C.
 Engineers • Architects • Surveyors
 Galesburg, Illinois
 49 North Park Street
 Galesburg, IL 62541
 Phone: 309.343.1100
 Fax: 309.343.1101
 www.klingner.com

USER NAME = rbailey	DESIGNED - RTB	REVISED -
	DRAWN - RTB	REVISED -
PLOT SCALE = 100,0000' / in.	CHECKED - MCL	REVISED -
PLOT DATE = 3/21/2023	DATE - 03/21/2023	REVISED -

**STATE OF ILLINOIS
 DEPARTMENT OF TRANSPORTATION**

TYPICAL SECTIONS			
SCALE: NONE	SHEET 1	OF 1 SHEETS	STA. TO STA.

F.A.S. RTE.	SECTION	COUNTY	TOTAL SHEETS	SHEET NO.
2400	(106, 108): (107)I-1	KNOX	14	5
CONTRACT NO. 68H69				
ILLINOIS FED. AID PROJECT				



MODEL: D:\d\h\...
 FILE NAME: 032\files\13081_IDOT - DIST 4 - FTB 201-033\Work_Order_15 - FY 2023_Paving\18_Transportation\68H69_US 150_Edging\CAD_Sheets\US 150 - 2005_Line_Diagram.dgn

KLINGNER & ASSOCIATES, P.C.
 Engineers • Architects • Surveyors
 Galesburg, Illinois
44 North Prairie Street
925-242-6447

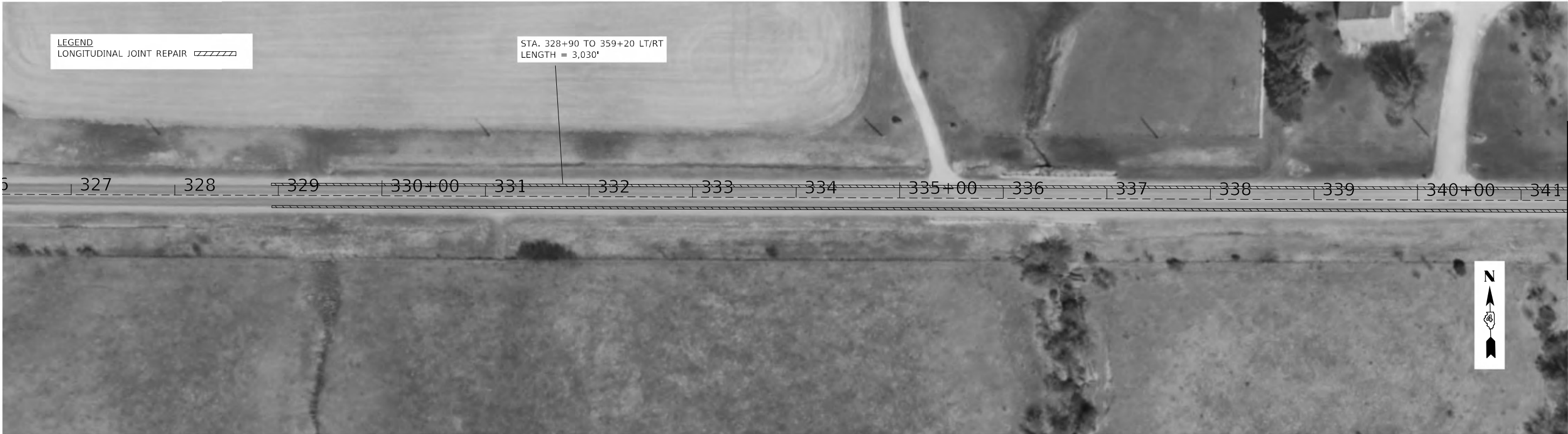
USER NAME = rballey	DESIGNED - RTB	REVISED -
	DRAWN - RTB	REVISED -
PLOT SCALE = 5000.0000' / in.	CHECKED - MCL	REVISED -
PLOT DATE = 3/21/2023	DATE - 03/21/2023	REVISED -

**STATE OF ILLINOIS
 DEPARTMENT OF TRANSPORTATION**

LINE DIAGRAM

SCALE: NONE SHEET 1 OF 1 SHEETS STA. TO STA.

F.A.S. RTE.	SECTION	COUNTY	TOTAL SHEETS	SHEET NO.
2400	(106, 108): (107)-1	KNOX	14	6
CONTRACT NO. 68H69				
ILLINOIS FED. AID PROJECT				



LEGEND
LONGITUDINAL JOINT REPAIR

STA. 328+90 TO 359+20 LT/RT
LENGTH = 3,030'



MATCHLINE STA. 341+50



STA. 328+90 TO 359+20 LT/RT
LENGTH = 3,030'

STA. 328+90 TO 359+20 LT/RT
LENGTH = 3,030'



MATCHLINE STA. 341+50

MATCHLINE STA. 356+75

LEGEND
LONGITUDINAL JOINT REPAIR

MODEL: Default
 FILE NAME: C:\Users\13081.IDOT - DSST - 4 - RTB 201403\Work_Order_15 - FY_2023_Precinct\18_Transportation\68H69 (US_150_Edgerline)\CAD_Sheets\US_150 - 007_Proposed_Road.dgn
 Galesburg, Illinois
 49 North Park Street
 62520-1400

KLINGNER & ASSOCIATES, P.C.
 Engineers • Architects • Surveyors
 Galesburg, Illinois
 49 North Park Street
 62520-1400

USER NAME = rbailey	DESIGNED - RTB	REVISED -
	DRAWN - RTB	REVISED -
PLOT SCALE = 100,0000' / in.	CHECKED - MCL	REVISED -
PLOT DATE = 3/21/2023	DATE - 03/21/2023	REVISED -

**STATE OF ILLINOIS
DEPARTMENT OF TRANSPORTATION**

PROPOSED PLAN VIEW

SCALE: NONE SHEET 1 OF 8 SHEETS STA. 326+00 TO STA. 356+75

F.A.S. RTE.	SECTION	COUNTY	TOTAL SHEETS	SHEET NO.
2400	(106, 108)I: (107)I-1	KNOX	14	7
CONTRACT NO. 68H69				
ILLINOIS FED. AID PROJECT				



MATCHLINE STA. 346+75

MATCHLINE STA. 372+00

LEGEND
LONGITUDINAL JOINT REPAIR

STA. 328+90 TO 359+20 LT/RT
LENGTH = 3,030'

STA. 369+59 TO 385+86 LT/RT
LENGTH = 1,627'



MODEL: Default
FILE NAME: C:\Users\j13081\Documents\18_Transportation\68H69 (US_150_Edgetline)\CAD_Sheets\US_150_008_Proposed_Rbrt2.dgn
DATE: 3/21/2023 10:08:11 AM

KLINGNER & ASSOCIATES, P.C.
Engineers • Architects • Surveyors
Galesburg, Illinois
49 North Park Street
Galesburg, IL 62541
www.klingner.com
Galesburg, IL 62541
Burlington, IL 62591
Danvers, IL 62534

USER NAME = rbailey	DESIGNED - RTB	REVISED -
PLOT SCALE = 100,0010' / in.	DRAWN - RTB	REVISED -
PLOT DATE = 3/21/2023	CHECKED - MCL	REVISED -
	DATE - 03/21/2023	REVISED -

**STATE OF ILLINOIS
DEPARTMENT OF TRANSPORTATION**

PROPOSED PLAN VIEW

SCALE: NONE SHEET 2 OF 8 SHEETS STA. 346+75 TO STA. 372+00

F.A.S. RTE.	SECTION	COUNTY	TOTAL SHEETS	SHEET NO.
2400	(106, 108)I: (107)I-1	KNOX	14	8
CONTRACT NO. 68H69				
ILLINOIS FED. AID PROJECT				

LEGEND
LONGITUDINAL JOINT REPAIR 

STA. 369+59 TO 385+86 LT/RT
LENGTH = 1,627'

STA. 369+59 TO 385+86 LT/RT
LENGTH = 1,627'

MATCHLINE STA. 372+00

MATCHLINE STA. 387+00



MODEL: Default
 FILE NAME: C:\Users\j13081\OneDrive\Work\Order 15 - FY 2023\Projects\118 Transportation\68H69 IUS 150 EdgeLine\CAD_Sheets\150 - 009 Proposed Plan\3.dgn
 DATE: 3/21/2023 11:08:11 AM

KLINGNER & ASSOCIATES, P.C.
 Engineers • Architects • Surveyors
 Galesburg, Illinois
 49 North Park Street
 Galesburg, IL 62541
 Phone: 309.343.1111
 Fax: 309.343.1112
 www.klingner.com

USER NAME = rbailey
 PLOT SCALE = 100,0010' / in.
 PLOT DATE = 3/21/2023

DESIGNED - RTB
 DRAWN - RTB
 CHECKED - MCL
 DATE - 03/21/2023

REVISED -
 REVISED -
 REVISED -
 REVISED -

**STATE OF ILLINOIS
 DEPARTMENT OF TRANSPORTATION**

PROPOSED PLAN VIEW

SCALE: NONE SHEET 3 OF 8 SHEETS STA. 372+00 TO STA. 387+00

F.A.S. RTE.	SECTION	COUNTY	TOTAL SHEETS	SHEET NO.
2400	(106, 108)I: (107)I-1	KNOX	14	9
CONTRACT NO. 68H69				
ILLINOIS FED. AID PROJECT				



LEGEND
 LONGITUDINAL JOINT REPAIR

STA. 389+53 TO 415+20 RT
 LENGTH = 2,567'

STA. 389+53 TO 415+20 RT
 LENGTH = 2,567'



MATCHLINE STA. 402+00

PC Sta 412+69.50

MODEL Path: \\s:\projects\13081_IDOT - DIST - 4 - RTB 201603\Work_Order_15 - FY_2023_Pricing\18_Transportation\68H69_ILS_150_Edgetline\CAD_Sheets\US_011_Proposed_Plan_View.dgn

KLINGNER & ASSOCIATES, P.C.
 Engineers • Architects • Surveyors
 Galesburg, Illinois
49 North Park Street, Galesburg, IL 62541, USA
 309.343.4444

USER NAME = rbailey
 PLOT SCALE = 100,0010' / in.
 PLOT DATE = 3/21/2023

DESIGNED - RTB
 DRAWN - RTB
 CHECKED - MCL
 DATE - 03/21/2023

REVISED -
 REVISED -
 REVISED -
 REVISED -

**STATE OF ILLINOIS
 DEPARTMENT OF TRANSPORTATION**

PROPOSED PLAN VIEW

SCALE: NONE SHEET 5 OF 8 SHEETS STA. 402+00 TO STA. 417+00

F.A.S RTE.	SECTION	COUNTY	TOTAL SHEETS	SHEET NO.
2400	(106, 108)I: (107)I-1	KNOX	14	11
CONTRACT NO. 68H69				
ILLINOIS FED. AID PROJECT				

LEGEND
 LONGITUDINAL JOINT REPAIR 



MATCHLINE STA. 439+50

MODEL Path: \\s:\projects\13081_IDOT - DIST - 4 - RTB 201603\Work_Order_15 - FY_2023_Pricing\18_Transportation\68H69_IUS_150_Edpline\CAD_Sheets\US_150 - 012_Proposed_PlanView.dwg
 FILE NAME: C:\Users\jrb\Documents\13081_IDOT - DIST - 4 - RTB 201603\Work_Order_15 - FY_2023_Pricing\18_Transportation\68H69_IUS_150_Edpline\CAD_Sheets\US_150 - 012_Proposed_PlanView.dwg

KLINGNER & ASSOCIATES, P.C.
 Engineers • Architects • Surveyors
 Galesburg, Illinois
 49 North Park Street
 Galesburg, IL 62541
 Phone: 309.343.1111
 Fax: 309.343.1112
 www.klingner.com

USER NAME = rbailey
 PLOT SCALE = 100,0010 ' / in.
 PLOT DATE = 3/21/2023

DESIGNED - RTB
 DRAWN - RTB
 CHECKED - MCL
 DATE - 03/21/2023

REVISED -
 REVISED -
 REVISED -
 REVISED -

**STATE OF ILLINOIS
 DEPARTMENT OF TRANSPORTATION**

PROPOSED PLAN VIEW

SCALE: NONE SHEET 6 OF 8 SHEETS STA. 425+00 TO STA. 439+50

F.A.S. RTE.	SECTION	COUNTY	TOTAL SHEETS	SHEET NO.
2400	(106, 108)I: (107)I-1	KNOX	14	12
CONTRACT NO. 68H69				
ILLINOIS FED. AID PROJECT				

LEGEND
LONGITUDINAL JOINT REPAIR 

STA. 426+61 TO 456+23 LT/RT
LENGTH = 2,961'

STA. 426+61 TO 456+23 LT/RT
LENGTH = 2,961'

PC Sta 447+48.73

PI Sta 451+16.73

MATCHLINE STA. 439+50

MATCHLINE STA. 454+50

454+71.32
454+71.32



MODEL: Default
FILE NAME: C:\Ifiles\21081 IDOT - DIST - 4 - RTB 201603\Work Order 15 - FY 2023 Project\118 Transportation\68H69 IUS 150 EdgeLine\CAD_Sheets\US 150 - 013 Proposed Plan7.dgn

KLINGNER & ASSOCIATES, P.C.
Engineers - Architects - Surveyors
Galesburg, Illinois
40 North Park Street
Galesburg, IL 62541
www.klingner.com

USER NAME	= rbailey
PLOT SCALE	= 100,0010 ' / in.
PLOT DATE	= 3/21/2023

DESIGNED	- RTB
DRAWN	- RTB
CHECKED	- MCL
DATE	- 03/21/2023

REVISED	-
REVISED	-
REVISED	-
REVISED	-

**STATE OF ILLINOIS
DEPARTMENT OF TRANSPORTATION**

PROPOSED PLAN VIEW

SCALE: NONE SHEET 7 OF 8 SHEETS STA. 439+50 TO STA. 454+50

F.A.S. RTE.	SECTION	COUNTY	TOTAL SHEETS	SHEET NO.
2400	(106, 108): (107)I-1	KNOX	14	13
CONTRACT NO. 68H69				
ILLINOIS FED. AID PROJECT				



LEGEND
 LONGITUDINAL JOINT REPAIR



MATCHLINE STA. 454+50

STA. 426+61 TO 456+23 LT/RT
 LENGTH = 2,961'

MODEL: Default
 FILE NAME: C:\Ifiles\21081_IDOT - DIST - 4 - RTB 201403\Work_Order_15 - FY 2023_Precip\18_Transportation\68H69_IUS_150_Edpline\CAD_Sheets\US_150 - 014_Proposed_Plan(8).dgn

KLINGNER & ASSOCIATES, P.C.
 Engineers - Architects - Surveyors
 Galesburg, Illinois
49 North Park Street, Galesburg, IL 62541
 309-343-4444

USER NAME = rbailey
 PLOT SCALE = 100,0010' / in.
 PLOT DATE = 3/21/2023

DESIGNED - RTB
 DRAWN - RTB
 CHECKED - MCL
 DATE - 03/21/2023

REVISED -
 REVISED -
 REVISED -
 REVISED -

**STATE OF ILLINOIS
 DEPARTMENT OF TRANSPORTATION**

PROPOSED PLAN VIEW

SCALE: NONE SHEET 8 OF 8 SHEETS STA. 454+50 TO STA. 470+00

F.A.S. RTE.	SECTION	COUNTY	TOTAL SHEETS	SHEET NO.
2400	(106, 108): (107)-1	KNOX	14	14
CONTRACT NO. 68H69				
ILLINOIS FED. AID PROJECT				