

F.A. RTE.	SECTION	COUNTY	TOTAL SHEETS	SHEET NO.
N/A	D4 PARKING LOT RESURF 2023	FULTON	9	1
		ILLINOIS	CONTRACT NO. 68H66	

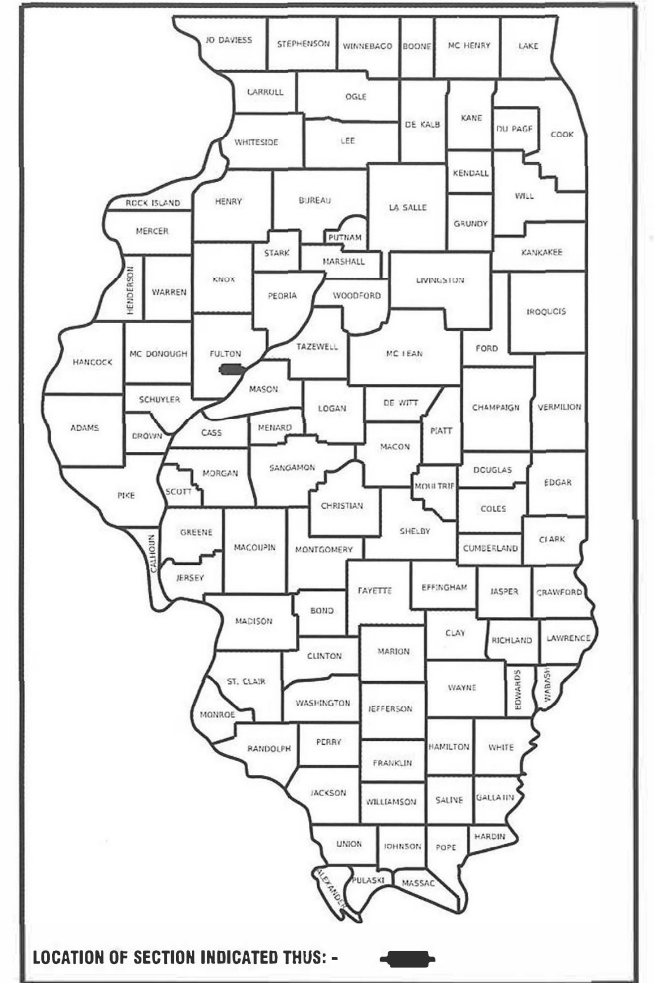
06-16-2023 LETTING ITEM 038

STATE OF ILLINOIS
DEPARTMENT OF TRANSPORTATION

PROPOSED HIGHWAY PLANS

ROUTE LEWISTOWN MAINTENANCE YARD SECTION D4 PARKING LOT RESURF 2023 PROJECT PARKING LOT IMPROVEMENTS FULTON COUNTY

D-94-043-23



INDEX OF SHEETS

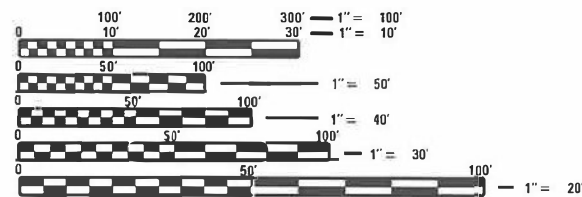
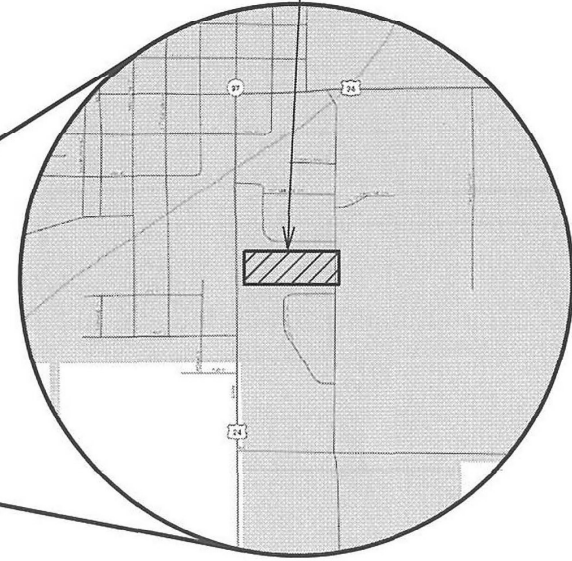
- 1 COVER SHEET
- 2 COMMITMENTS, GENERAL NOTES, AND PROJECT SPECIFIC NOTES
- 3 SUMMARY OF QUANTITIES
- 4 TYPICAL SECTION
- 5 SCHEDULE OF QUANTITIES
- 6 DEMOLITION PLAN
- 7 SITE PLAN
- 8 ELEVATION PLAN
- 9 PAVEMENT JOINT PLAN

HIGHWAY STANDARDS

- 000001-08
- 280001-07
- 420001-10
- 420101-07
- 420111-04
- 542301-03
- 602301-04
- 604001-05
- 701901-08

C-94-062-23

PROJECT LOCATION



FULL SIZE PLANS HAVE BEEN PREPARED USING STANDARD ENGINEERING SCALES. REDUCED SIZED PLANS WILL NOT CONFORM TO STANDARD SCALES. IN MAKING MEASUREMENTS ON REDUCED PLANS, THE ABOVE SCALES MAY BE USED.

J.U.L.I.E.
JOINT UTILITY LOCATION INFORMATION FOR EXCAVATION
1-800-892-0123
OR 811

LOCATION MAP

PROJECT ENGINEER BEN TELLEFSON (309)671-3333
PROJECT MANAGER WILL MOSER (309)671-3333
CONTRACT NO. 68H66
CATALOG NO. 036417-00D

Mark C. Lee
MARK C. LEE DATE 3/16/23

REGISTERED PROFESSIONAL ENGINEER
STATE OF ILLINOIS NO. 062-060864
LICENSE EXPIRES NOVEMBER 30, 2023

KLINGNER & ASSOCIATES, P.C.
Engineers • Architects • Surveyors
www.klingner.com
Galesburg, Illinois
49 North Prairie Street
308.342.4042
Quincy, IL Hannibal, MO
Burlington, IA Peoria, IA Columbia, MO
Davenport, IA Carbondale, IL
ILLINOIS DESIGN FIRM NO. 184-2738

STATE OF ILLINOIS
DEPARTMENT OF TRANSPORTATION
SUBMITTED March 20 2023
Kenneth A. Barnett, Inc.
REGIONAL ENGINEER
May 12, 2023 *S. E. A. Etk*
ENGINEER OF DESIGN AND ENVIRONMENT
May 12, 2023 *Stephen M. Smith*
DIRECTOR OF HIGHWAYS PROJECT IMPLEMENTATION

**PRINTED BY THE AUTHORITY
OF THE STATE OF ILLINOIS**

COMMITMENTS

COMMITMENTS ARE NOT TO BE ALTERED WITHOUT THE WRITTEN APPROVAL OF ALL PARTIES TO WHICH THE COMMITMENT WAS MADE.

NO COMMITMENTS HAVE BEEN MADE ON THIS PROJECT.

ENVIRONMENTAL REVIEWS

PRIOR TO THE USE OF ANY PROPOSED BORROW AREAS, USE AREAS (TEMPORARY ACCESS ROADS, DETOURS, RUN-AROUNDS, ETC.) AND /OR WASTE AREAS, THE CONTRACTOR SHALL FILE THE REQUIRED ENVIRONMENTAL RESOURCE REQUEST SURVEYS ACCORDING TO SECTION 107.22 OF THE STANDARD SPECIFICATIONS. THESE SURVEYS ARE REQUIRED IN ORDER FOR THE DEPARTMENT TO CONDUCT CULTURAL AND BIOLOGICAL RESOURCE SURVEYS FOR THE PROPOSED SITE.

THE REQUIRED ENVIRONMENTAL RESOURCE DOCUMENTATION SHALL INCLUDE THE FOLLOWING:

- BDE FORM 2289 (CULTURAL AND NATURAL RESOURCE REVIEW OF BORROW AREAS)
- BDE FORM 2290 (WASTE/USE AREA REVIEW)
- A LOCATION MAP SHOWING THE SIZE LIMITS AND LOCATION OF THE USE AREA
- COLOR PHOTOGRAPHS DEPICTING THE USE AREA
- BORROW AREA ENTRY AGREEMENT FORM-D4 PI0101

PRIOR TO ANY WASTE MATERIALS BEING REMOVED FROM THE CONSTRUCTION SITE THE REQUIRED ENVIRONMENTAL RESOURCE SURVEYS SHALL BE OBTAINED AND FILED BY THE CONTRACTOR. EXCESS WASTE PRODUCTS REMOVED FROM THE CONSTRUCTION SITE SHALL BE DISPOSED OF AS REQUIRED IN SECTION 202.03 OF THE STANDARD SPECIFICATIONS.

ANY PROTRUDING METAL BARS SHALL BE REMOVED PRIOR TO THE DISPOSAL OF BROKEN CONCRETE AT APPROVED DISPOSAL SITES.

PLEASE NOTE THAT A MINIMUM OF FOUR WEEKS SHALL BE ALLOWED FOR THE DISTRICT TO OBTAIN THE REQUIRED WASTE SITE ENVIRONMENTAL CLEARANCES AND SIX WEEKS FOR THE REQUIRED BORROW SITE ENVIRONMENTAL CLEARANCES.

MODEL: D:\p\h\...
 FILE NAME: 013\files\21081_IDOT - DIST 4 - PTD 201623\Work\Outdr_13 - FY 2023 Parking Lots\18\Transportation\CADD Sheets\Lewisdown Yard\002 Lewisdown General Notes_Shr.dwg

KLINGNER & ASSOCIATES, P.C.
 Engineers • Architects • Surveyors
 www.klingner.com
 Galesburg, Illinois Quincy, IL Marshall, MO
 40 North Payne Street Burlington, MA Columbia, MD
 563-343-4433 Danvers, VA Columbia, SC

USER NAME = mirch	DESIGNED - RTB	REVISED -
	DRAWN - RTB	REVISED -
PLOT SCALE = 2.0000' / in.	CHECKED - MCL	REVISED -
PLOT DATE = 3/16/2023	DATE - 3/1/23	REVISED -

STATE OF ILLINOIS
DEPARTMENT OF TRANSPORTATION

COMMITMENTS, GENERAL NOTES,
AND PROJECT SPECIFIC NOTES

SCALE: NONE SHEET 1 OF 1 SHEETS STA. N/A TO STA. N/A

F.A.P. RTE.	SECTION	COUNTY	TOTAL SHEETS	SHEET NO.
N/A	D4 PARKING LOT RESURF 2023	FULTON	10	2
CONTRACT NO. 68H66				
			ILLINOIS	FED. AID PROJECT

CODE NO.	ITEM	UNIT	TOTAL QUANTITY	CONSTRUCTION CODE								
				FULTON COUNTY								
				100% STATE								
				0005 RURAL								
20200100	EARTH EXCAVATION	CU YD	220	220								
28000400	PERIMETER EROSION BARRIER	FEET	200	200								
42000301	PORTLAND CEMENT CONCRETE PAVEMENT 8" (JOINTED)	SQ YD	3469	3469								
42001300	PROTECTIVE COAT	SQ YD	3469	3469								
44000100	PAVEMENT REMOVAL	SQ YD	329	329								
60260300	INLETS TO BE ADJUSTED WITH NEW TYPE 1 FRAME, OPEN LID	EACH	1	1								
67100100	MOBILIZATION	L SUM	1	1								
X0350810	BOLLARD REMOVAL	EACH	12	12								
Z0001110	GAS VALVE TO BE ADJUSTED	EACH	1	1								
Z0004002	BOLLARDS	EACH	12	12								
Z0013798	CONSTRUCTION LAYOUT	L SUM	1	1								

MODEL: Default
 FILE NAME: C:\11files\213081_IDOT - DST - 4 - FTB 2014033\Work_Order_13 - FY 2023 Parking Lots\18 Transportation\CADD Sheets\Lewisdown Yard\003 Summary_Quant_Sht.dgn

KLINGNER & ASSOCIATES, P.C.
 Engineers - Architects - Surveyors
 Galesburg, Illinois
54 North Payne Street, Galesburg, IL 62521

USER NAME = mirch	DESIGNED - RTB	REVISOR -
PLOT SCALE = 2.0000' / in.	DRAWN - RTB	REVISIONS -
PLOT DATE = 3/17/2023	CHECKED - MCL	DATE - 3/1/23

**STATE OF ILLINOIS
 DEPARTMENT OF TRANSPORTATION**

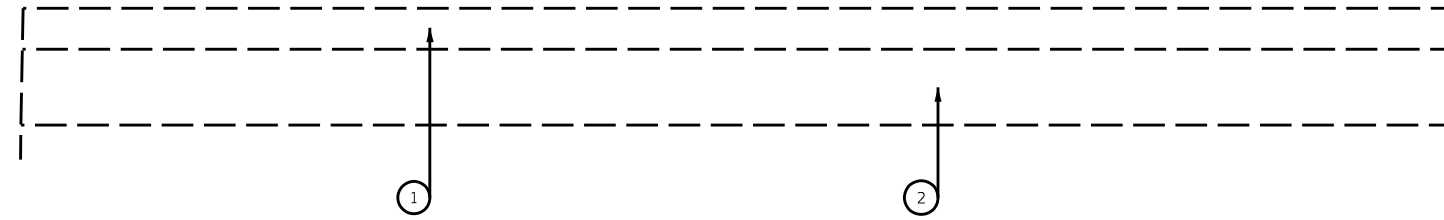
SUMMARY OF QUANTITIES

SCALE: NONE SHEET 1 OF 2 SHEETS STA. N/A TO STA. N/A

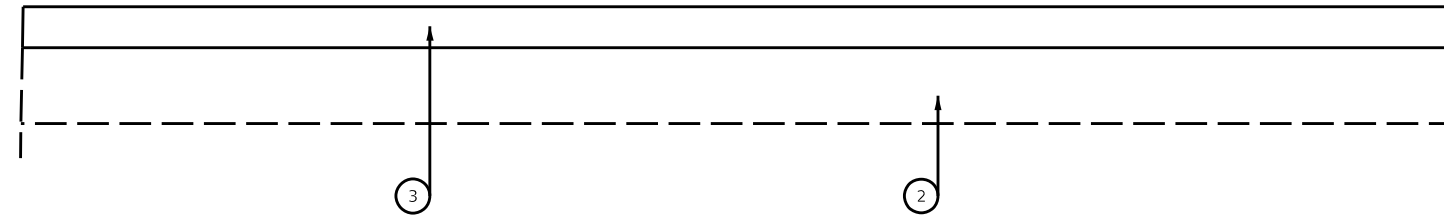
F.A.P. RTE.	SECTION	COUNTY	TOTAL SHEETS	SHEET NO.
N/A	D4 PARKING LOT RESURF 2023	FULTON	9	3
CONTRACT NO. 68H66			ILLINOIS FED. AID PROJECT	

PLAN NOTES

- EXISTING AGG SUBBASE TO BE USED AS SUBBASE FOR PCC PVMT 8".



EXISTING TYPICAL LEWISTOWN YARD PARKING LOT



PROPOSED TYPICAL LEWISTOWN YARD PARKING LOT

LEGEND

- ① EXISTING PCC PAVEMENT 8"
- ② EXISTING AGGREGATE SUBBASE
- ③ PROPOSED PCC PAVEMENT 8", JOINTED

MODEL: Mch1
 FILE NAME: G:\11iles\21081_IDOT - DIST 4 - RTB 201623\Work_Order_13 - FY 2023 Parking Lots\18.Transportation\CADD Sheets\Lewistown Yard\004_Typical_Section.dgn

KLINGNER & ASSOCIATES, P.C.
 Engineers • Architects • Surveyors
 Galesburg, Illinois
 40 North Payne Street
 Galesburg, IL 62541

USER NAME = mirch	DESIGNED - RTB	REVISED -
PLOT SCALE = 40,000 / in.	DRAWN - RTB	REVISED -
PLOT DATE = 3/17/2023	CHECKED - MCL	REVISED -
	DATE - 3/1/23	REVISED -

DESIGNED - RTB	REVISED -
DRAWN - RTB	REVISED -
CHECKED - MCL	REVISED -
DATE - 3/1/23	REVISED -

**STATE OF ILLINOIS
 DEPARTMENT OF TRANSPORTATION**

TYPICAL SECTION

SCALE: NONE SHEET 1 OF 1 SHEETS STA. N/A TO STA. N/A

F.A.P. RTE.	SECTION	COUNTY	TOTAL SHEETS	SHEET NO.
N/A	D4 PARKING LOT RESURF 2023	FULTON	9	4
CONTRACT NO. 68H66			ILLINOIS FED. AID PROJECT	

PARKING LOT SCHEDULE						
LOCATION	EARTH EXCAVATION	PERIMETER EROSION BARRIER	PCC PVMT 8" JOINTED	PROTECTIVE COAT	PAVEMENT REMOVAL	INLETS TO BE ADJUSTED WITH NEW TY 1 F&G, OL
	CU YD	FOOT	SQ YD	SQ YD	SQ YD	EACH
LEWISTOWN FACILITY (FULTON)						
TOTALS	220	200	3469	3469	329	1
USE	220	200	3469	3469	329	1

PARKING LOT SCHEDULE (CONTINUED)					
LOCATION	MOBILIZATION	BOLLARD REMOVAL	BOLLARDS	GAS VALVE TO BE ADJUSTED	CONSTRUCTION LAYOUT
	L SUM	EACH	EACH	EACH	L SUM
LEWISTOWN FACILITY (FULTON)					
TOTALS	1	12	12	1	1
USE	1	12	12	1	1

MODEL: I:\default\...
 FILE NAME: C:\Users\j1081\IDOT - DIST 4 - PTD 201603\Work\Order 13 - FY 2023 Parking Lots\18 Transportation\CADD Sheets\LewisTown Yard\005 Schedule Quant_Sht.dwg



USER NAME = mirch	DESIGNED - RTB	REVISED -
	DRAWN - RTB	REVISED -
PLOT SCALE = 100.0000' / in.	CHECKED - MCL	REVISED -
PLOT DATE = 3/17/2023	DATE - 3/1/23	REVISED -

STATE OF ILLINOIS
DEPARTMENT OF TRANSPORTATION

SCHEDULE OF QUANTITIES			
SCALE: NONE	SHEET 1	OF 1 SHEETS	STA. N/A TO STA. N/A

F.A.P. RTE.	SECTION	COUNTY	TOTAL SHEETS	SHEET NO.
N/A	D4 PARKING LOT RESURF 2023	FULTON	9	5
CONTRACT NO. 68H66			ILLINOIS FED. AID PROJECT	



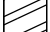
PLAN NOTES

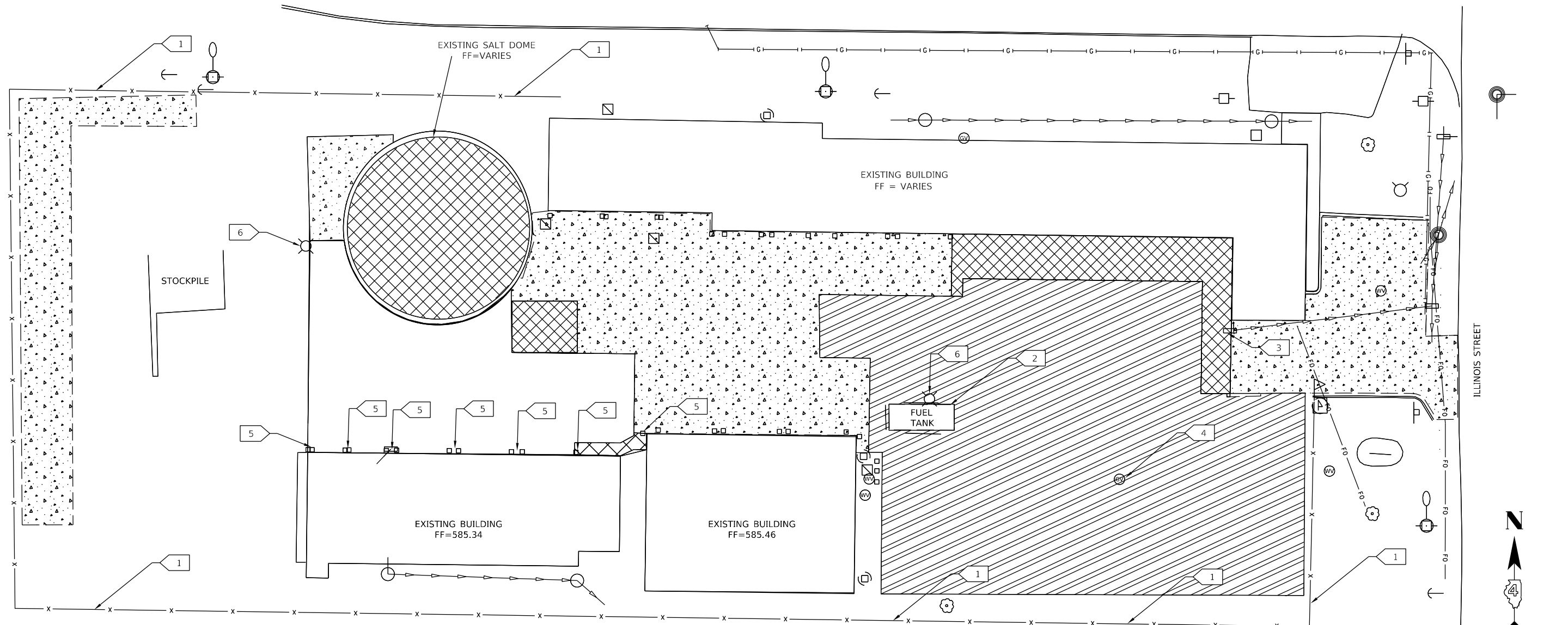
1. THE CONTRACTOR MUST PROVIDE ACCESS TO THE YARD AT ALL TIMES.
ACCESS MAY BE GRANTED OUTSIDE NORMAL IDOT WORKING HOURS SO THAT WORK CAN BE COMPLETED.

SITE DEMOLITION PLAN KEY:

- 1 FENCE TO REMAIN
- 2 TANKS TO REMAIN
- 3 INLET TO BE ADJUSTED
- 4 VALVE TO BE ADJUSTED
- 5 REMOVE BOLLARDS
- 6 LIGHT POLE TO REMAIN

LEGEND

-  REMOVE EXISTING PCC PAVEMENT
-  EXISTING PCC PAVEMENT TO REMAIN
-  EXCAVATE EXISTING GRAVEL



MODEL: Mch1
 FILE NAME: D:\3\files\213081_IDOT - DIST - 4 - PTD 201623\Work_Order_13 - FY_2023 Parking Lots\18\Transportation\CADD Sheets\Lewis\Town_Yard\0066 Lewis\Town_DEMO.dwg

KLINGNER & ASSOCIATES, P.C.
 Engineers • Architects • Surveyors
 Galesburg, Illinois
 49 North Prairie Street
 985.352.4142

USER NAME = mirch	DESIGNED - RTB	REVISED -
	DRAWN - RTB	REVISED -
PLOT SCALE = 40.000 / in.	CHECKED - MCL	REVISED -
PLOT DATE = 3/17/2023	DATE - 3/1/23	REVISED -

**STATE OF ILLINOIS
DEPARTMENT OF TRANSPORTATION**

DEMOLITION PLAN



SCALE: 1"=20' SHEET 1 OF 1 SHEETS STA. N/A TO STA. N/A

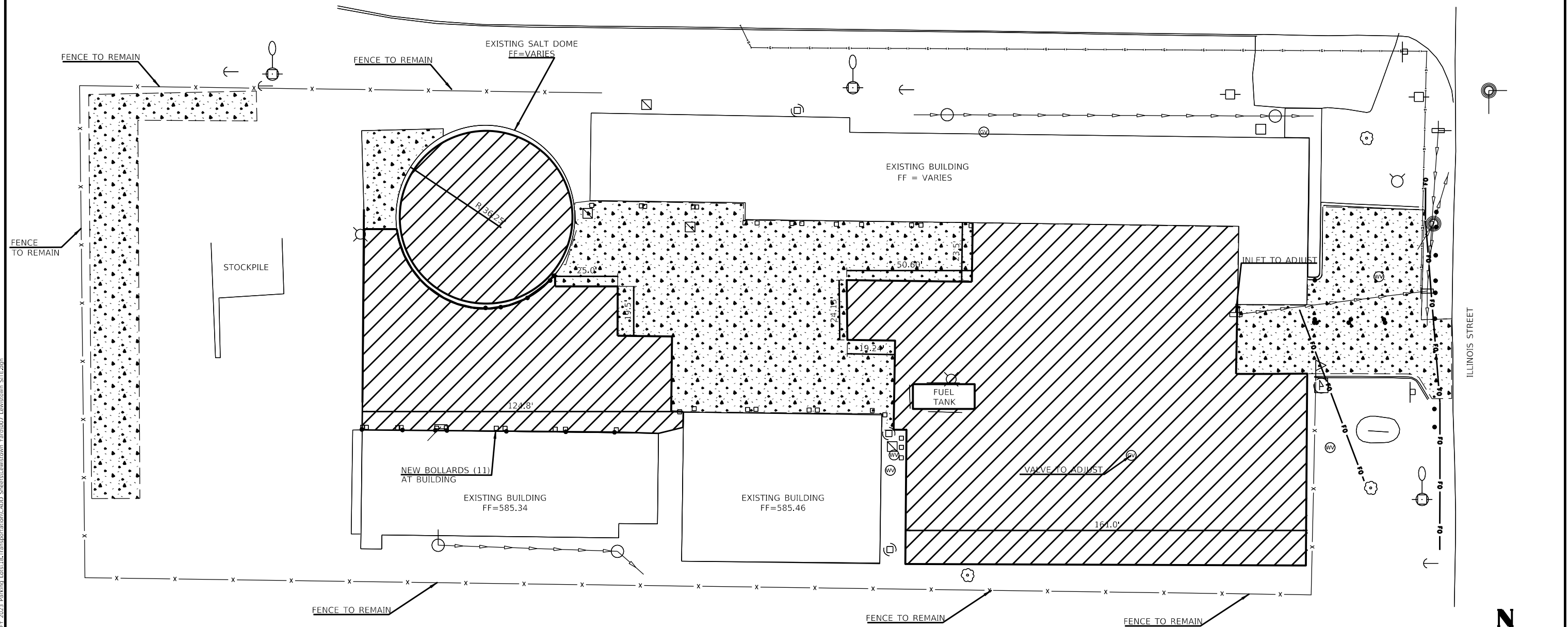
F.A.P. RTE.	SECTION	COUNTY	TOTAL SHEETS	SHEET NO.
N/A	D4 PARKING LOT RESURF 2023	FULTON	9	6
CONTRACT NO. 68H66				
ILLINOIS		FED. AID PROJECT		

PLAN NOTES

1. THE CONTRACTOR SHALL REMOVE AND REPLACE BOLLARDS IN CONFLICT WITH PAVEMENT IMPROVEMENTS.
2. ANY DAMAGE TO EXISTING GRASS AREAS TO REMAIN SHALL BE RESTORED BY THE CONTRACTOR.
3. THE EAST EDGE OF THE PCC PAVEMENT SHALL STOP 6" FROM FENCE. ANY DAMAGE TO THE FENCE SHALL BE RESTORED BY CONTRACTOR.

LEGEND

-  PROPOSED 8" JOINTED PCC PAVEMENT
-  EXISTING PCC PAVEMENT TO REMAIN



MODEL: Mch1
 FILE NAME: C:\3\files\21081_IDOT_DIST_4 - RTB_201623\Work_Ordor_13 - FY_2023_Parking_Lots\18_Transportation\CADD_Sheets\Lewisiana_Yard\007_Lewisiana_SITE.dwg
 Galesburg, Illinois
 40 North Payne Street
 62524-4442

KLINGNER & ASSOCIATES, P.C.
 Engineers • Architects • Surveyors
 Galesburg, Illinois
 40 North Payne Street
 62524-4442

USER NAME = mirch
 PLOT SCALE = 40,000 / in.
 PLOT DATE = 3/17/2023

DESIGNED - RTB
 DRAWN - RTB
 CHECKED - MCL
 DATE - 3/1/23

REVISED -
 REVISED -
 REVISED -
 REVISED -

**STATE OF ILLINOIS
 DEPARTMENT OF TRANSPORTATION**

SITE PLAN
 SCALE: 1"=20'
 SHEET 1 OF 1 SHEETS
 STA. N/A TO STA. N/A

F.A.P. RTE.	SECTION	COUNTY	TOTAL SHEETS	SHEET NO.
N/A	D4 PARKING LOT RESURF 2023	FULTON	9	7
CONTRACT NO. 68H66				
ILLINOIS FED. AID PROJECT				

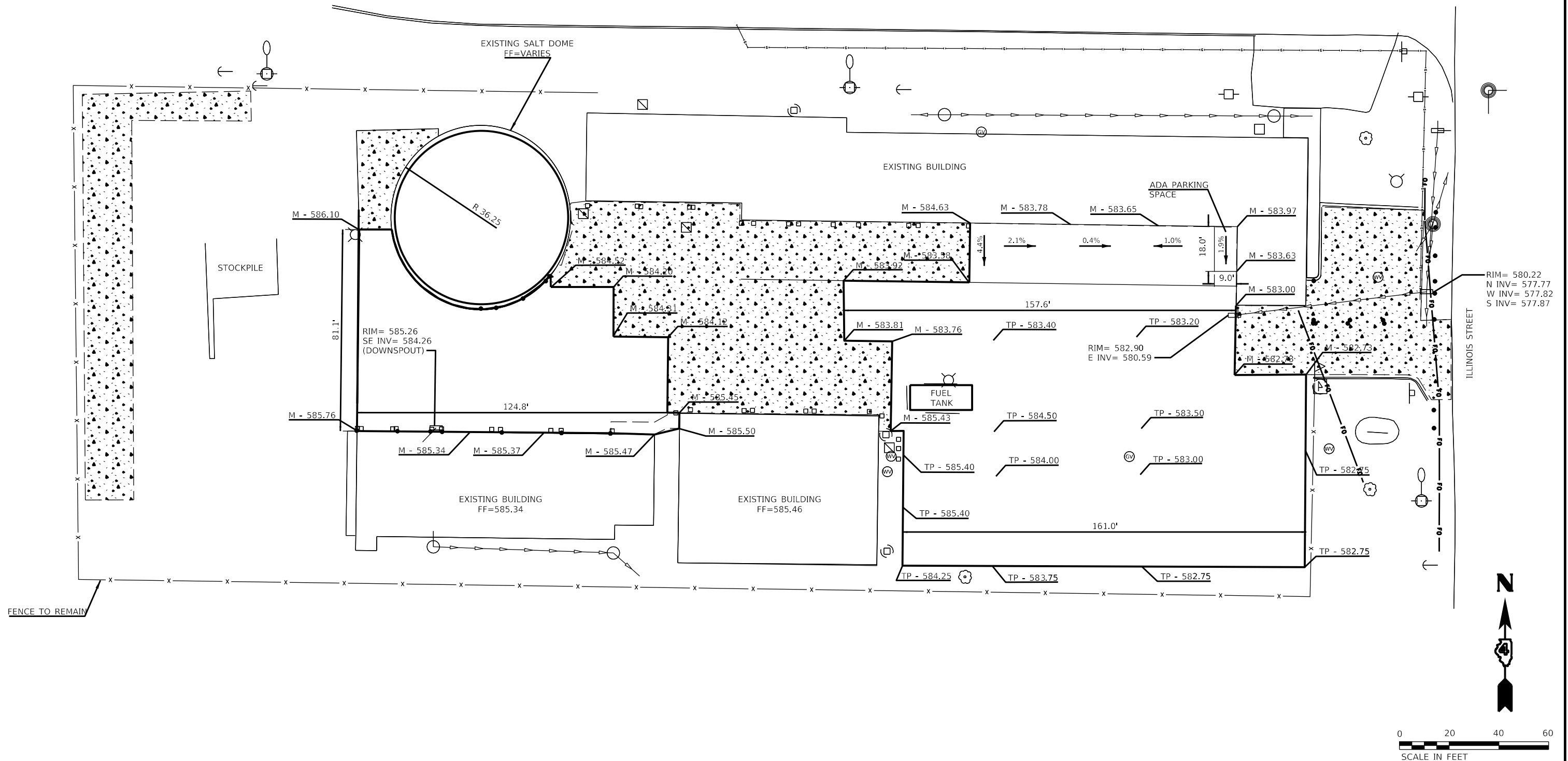
PLAN NOTES

1. THE CONTRACTOR SHALL REMOVE AND REPLACE BOLLARDS IN CONFLICT WITH PAVEMENT IMPROVEMENTS.
2. ANY DAMAGE TO EXISTING GRASS AREAS TO REMAIN SHALL BE RESTORED BY THE CONTRACTOR.
3. THE EAST EDGE OF THE PCC PAVEMENT SHALL STOP 6" FROM FENCE. ANY DAMAGE TO THE FENCE SHALL BE RESTORED BY CONTRACTOR.
4. CONTRACTOR TO VERIFY EXISTING ELEVATIONS IN SLAT DOME AND MATCH.

ABBREVIATIONS

- FL FLOWLINE ELEVATION
- TG TOP OF GRATE ELEVATION
- M MATCH EXISTING ELEVATION
- TP TOP OF PAVEMENT ELEVATION
- FF FINISHED FLOOR ELEVATION

LEGEND



MODEL: Mch1
 FILE NAME: G:\3\11081_IDOT - DIST 4 - PTD 201623\Work_Ordor 13 - FY 2023_Parking Lots\18_Transportation\CADD_Sheets\LEWISTOWN_Yard\008_Elevation_ELEV.dwg
 Galesburg, Illinois
 40 North Prairie Street
 304.543.4442

KLINGNER & ASSOCIATES, P.C.
 Engineers • Architects • Surveyors
 www.klingner.com

USER NAME = mirch	DESIGNED - RTB	REVISD -
PLOT SCALE = 40.001 / in.	DRAWN - RTB	REVISD -
PLOT DATE = 3/17/2023	CHECKED - MCL	REVISD -
	DATE - 3/1/23	REVISD -

DESIGNED - RTB	REVISD -
DRAWN - RTB	REVISD -
CHECKED - MCL	REVISD -
DATE - 3/1/23	REVISD -

**STATE OF ILLINOIS
DEPARTMENT OF TRANSPORTATION**

ELEVATION PLAN	
SCALE: 1"=20'	SHEET 1 OF 1 SHEETS
STA. N/A	TO STA. N/A

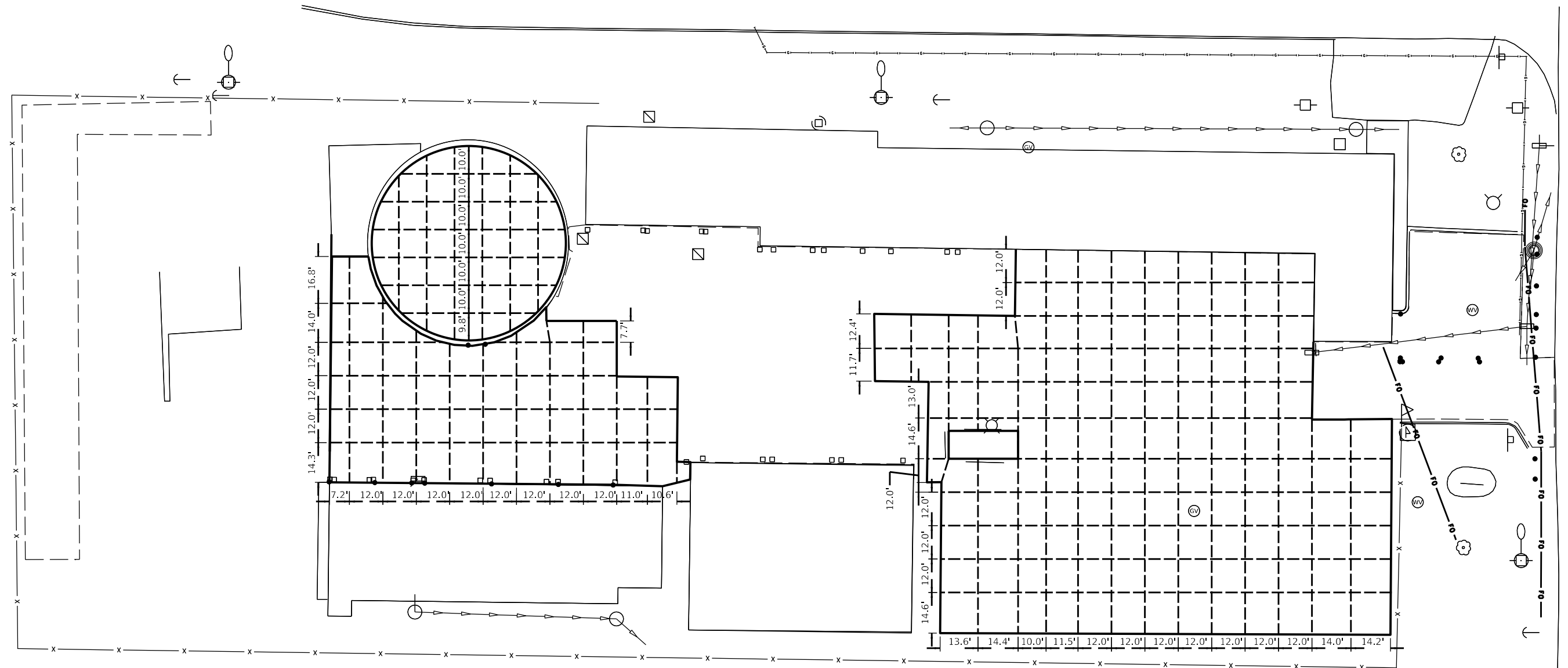
F.A.P. RTE.	SECTION	COUNTY	TOTAL SHEETS	SHEET NO.
N/A	D4 PARKING LOT RESURF 2023	FULTON	9	8
CONTRACT NO. 68H66				
ILLINOIS FED. AID PROJECT				

PLAN NOTES

- SEE STANDARD 420101 FOR SPACING AND JOINT DETAILS.
CONTRACTOR TO DETERMINE DIRECTION OF LONGITUDINAL AND TRANSVERSE JOINTS.

LEGEND

--- PROPOSED JOINT LOCATIONS



MODEL: Mch1
 FILE NAME: C:\3\files\21081_IDOT - DIST 4 - PTD 201623\Work_Order_13 - FY 2023 Parking Lots\18_Transportation\CADD_Sheets\Lewisston_Yard\009_P/WT_Joint_Plan.dwg
 Galesburg, Illinois
 40 North Prairie Street
 62524-4442

KLINGNER & ASSOCIATES, P.C.
 Engineers • Architects • Surveyors
 www.klingner.com
 Quincy, IL, Hannibal, MO
 Burlington, MA, Plover, WI, Columbia, MD
 Danversport, VT, Columbus, IA

USER NAME = mirch
PLOT SCALE = 40,000 / in.
PLOT DATE = 3/17/2023

DESIGNED - RTB	REVISIED -
DRAWN - RTB	REVISIED -
CHECKED - MCL	REVISIED -
DATE - 3/1/23	REVISIED -

**STATE OF ILLINOIS
DEPARTMENT OF TRANSPORTATION**

PAVEMENT JOINT PLAN

SCALE: 1"=20' SHEET 1 OF 1 SHEETS STA. N/A TO STA. N/A

F.A.P. RTE.	SECTION	COUNTY	TOTAL SHEETS	SHEET NO.
N/A	D4 PARKING LOT RESURF 2023	FULTON	9	9
CONTRACT NO. 68H66				
ILLINOIS FED. AID PROJECT				

