

06-116-2023 LETTING ITEM 021

STATE OF ILLINOIS
DEPARTMENT OF TRANSPORTATION
**PROPOSED
HIGHWAY PLANS**

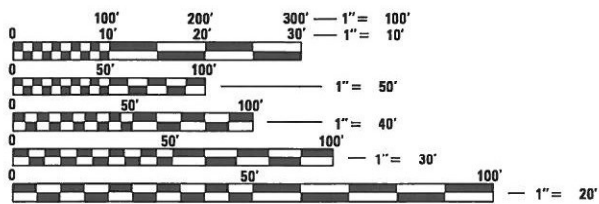
SEE SHEET 2 FOR INDEX OF SHEETS

FAI ROUTE 88 (I-88)
SECTION (161-1HB-5)BJR
PROJECT
BRIDGE REHABILITATION
ROCK ISLAND COUNTY, IL

C-92-127-22

| F.A. RTE. | SECTION | COUNTY | TOTAL SHEETS | SHEET NO. |
|-----------|----------------|-------------|--------------------|-----------|
| FAI 88 | (161-1HB-5)BJR | ROCK ISLAND | 5 | 1 |
| | | ILLINOIS | CONTRACT NO. 64S08 | |

D-92-042-23

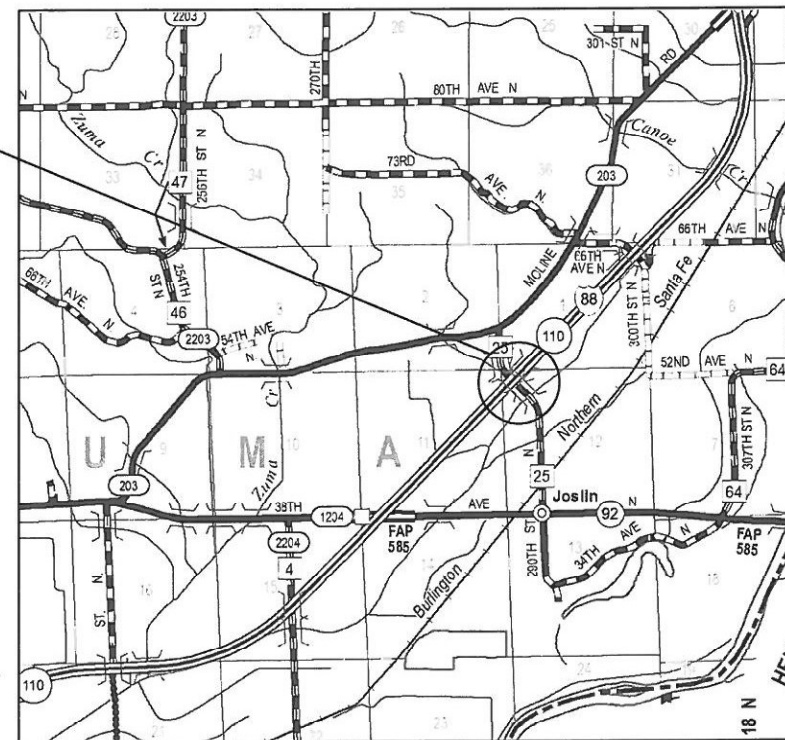


FULL SIZE PLANS HAVE BEEN PREPARED USING STANDARD ENGINEERING SCALES. REDUCED SIZE PLANS WILL NOT CONFORM TO STANDARD SCALES. IN MAKING MEASUREMENTS ON REDUCED PLANS, THE ABOVE SCALES MAY BE USED.

J.U.L.I.E.
JOINT UTILITY LOCATION INFORMATION FOR EXCAVATION
1-800-892-0123
OR 811

EXISTING STRUCTURE
SN 081-0126 A TWO SPAN
STEEL GIRDER SUPERSTRUCTURE
WITH CLOSED ABUTMENTS
BACK TO BACK LENGTH = 247'-7 1/4"
OUT TO OUT WIDTH = 32'

SCOTT T. WYATT
081.006432
LICENSED
STRUCTURAL
ENGINEER
ILLINOIS
3/6/23
EXP. 11/30/24



LOCATION MAP

GROSS LENGTH = 247.60 FT. = 0.05 MILE
NET LENGTH = 247.60 FT. = 0.05 MILE

PROJECT ENGINEER SCOTT WYATT, PE, SE
PROJECT MANAGER MAHMOUD ETEMADI, PE

CONTRACT NO. 64S08

STATE OF ILLINOIS
DEPARTMENT OF TRANSPORTATION
SUBMITTED March 20, 2023
Tom Almond
REGIONAL ENGINEER
May 12, 2023 *Scott Wyatt*
ENGINEER OF DESIGN AND ENVIRONMENT
May 12, 2023 *Stephen McQuinn*
DIRECTOR OF HIGHWAYS PROJECT IMPLEMENTATION

**PRINTED BY THE AUTHORITY
OF THE STATE OF ILLINOIS**

INDEX OF SHEETS

1. COVER SHEET
2. INDEX OF SHEETS, HIGHWAY STANDARDS AND GENERAL NOTES
3. SUMMARY OF QUANTITIES
4. PLAN AND ELEVATION
5. BARRIER IMPROVMENTS

STATE/DISTRICT HIGHWAY STANDARDS

- 000001-08 STANDARDS SYMBOLS, ABBREVIATIONS AND PATTERNS
- 001006 DECIMALS OF AN INCH AND OF A FOOT
- 701901-08 TRAFFIC CONTROL DEVICES
- 701301-04 LANE CLOSURE, 2L, 2W, SHORT TIME OPERATIONS
- 701006-05 OFF-ROAD OPERATIONS, 2L, 2W, 15' (4.5m) TO 24' (600 mm) FROM PAVEMENT EDGE
- 701001-02 OFF-ROAD OPERATIONS, 2L, 2W, MORE THAN 15' (4.5m) TO 24" (600 mm) AWAY FROM PAVEMENT EDGE
- 701400-11 APPROACH TO LANE CLOSURE, FREEWAY/EXPRESSWAY
- 701406-13 LANE CLOSURE, FREEWAY/EXPRESSWAY, DAY OPERATIONS ONLY
- 40.1 D2 TRAFFIC CONTROL FOR ROAD CLOSURE
- 701011-04 OFF-RD MOVING OPERATIONS, 2L, 2W, DAY ONLY

GENERAL NOTES

1. THE STRUCTURE NUMBER SHALL REMAIN 081-0126
2. DO NOT SCALE PLANS FOR CONSTRUCTION DIMENSIONS
3. TRAFFIC WILL BE DETOURED DURING CONSTRUCTION
4. THE CONTRACTOR SHALL CONTACT THE IDOT DISTRICT 2 ENGINEER AT (815)284-2271 A MINIMUM OF 72 HOURS IN ADVANCE OF BEGINNING WORK.

REV. 5/18/23 REV. 5/15/23

MODEL: Default
FILE NAME: \\kpff.com\dfs\Bridges\220762 (WO 12 SN 081-0126)\02_Design (MS)\64508-02_Index.dgn



1560 Sherman Ave, Suite 1020
Evanston, IL 60201
847-859-7790
www.kpff.com

| | | |
|--------------|------------|-----------|
| USER NAME = | DESIGNED - | REVISED - |
| | CHECKED - | REVISED - |
| PLOT SCALE = | DRAWN - | REVISED - |
| PLOT DATE = | CHECKED - | REVISED - |

STATE OF ILLINOIS
DEPARTMENT OF TRANSPORTATION

SN 081-0126 C.H. 25 (286th STREET) OVER I-88 (FAI 88)
INDEX OF SHEETS, HIGHWAY STANDARDS AND GENERAL NOTES

| F.A. RTE. | SECTION | COUNTY | TOTAL SHEETS | SHEET NO. |
|---------------------------|----------------|-------------|--------------|-----------|
| 88 | (161-1HB-5)BJR | ROCK ISLAND | 5 | 2 |
| CONTRACT NO. 64508 | | | | |
| ILLINOIS FED. AID PROJECT | | | | |

SUMMARY OF QUANTITIES

| | | | | CONSTRUCTION CODE | |
|----------|---|-------|----------------|-------------------|---------|
| | | | | 100% STATE | |
| CODE NO. | ITEM | UN IT | TOTAL QUANTITY | BRIDGE | ROADWAY |
| | | | | RURAL | |
| | | | | SN 081-0126 | |
| 50104000 | BRIDGE RAIL REMOVAL | FOOT | 485 | 485 | |
| 50157300 | PROTECTIVE SHIELD | SQ YD | 411 | 411 | |
| 67100100 | MOBILIZATION | L SUM | 1 | 1 | |
| 70100701 | TRAFFIC CONTROL AND PROTECTION, STANDARD 701406 | EA | 1 | 1 | |
| X0325748 | ACRYLIC COATING | SQ YD | 378 | 378 | |
| X7010216 | TRAFFIC CONTROL AND PROTECTION, (SPECIAL) | L SUM | 1 | 1 | |
| Z0012754 | STRUCTURAL REPAIR OF CONCRETE (DEPTH =< 5 INCHES) | SQ FT | 27 | 27 | |
| Z0053750 | RETROFIT CONCRETE PARAPET | FOOT | 485 | 485 | |
| | | | | | |
| | | | | | |
| | | | | | |
| | | | | | |
| | | | | | |
| | | | | | |
| | | | | | |
| | | | | | |
| | | | | | |
| | | | | | |
| | | | | | |
| | | | | | |
| | | | | | |
| | | | | | |
| | | | | | |
| | | | | | |
| | | | | | |
| | | | | | |
| | | | | | |
| | | | | | |
| | | | | | |
| | | | | | |
| | | | | | |
| | | | | | |
| | | | | | |
| | | | | | |

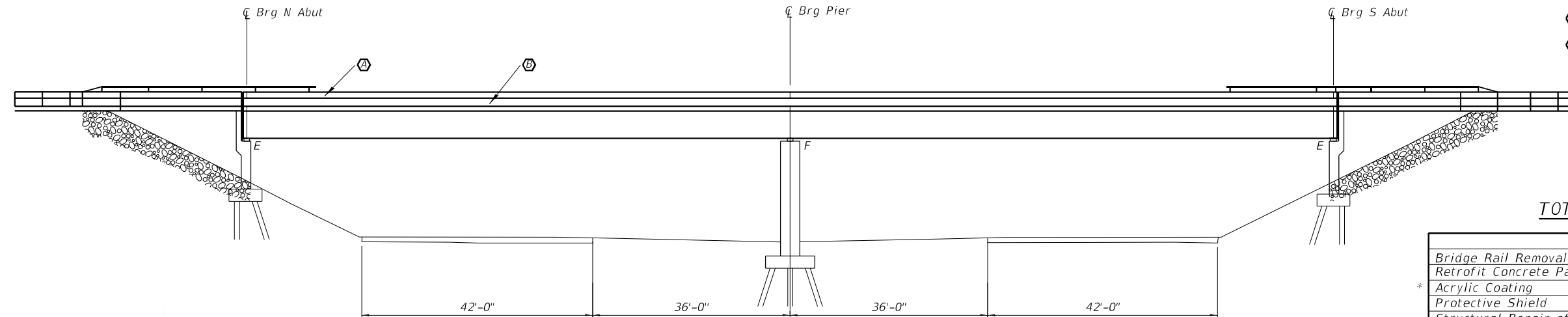
MODEL: Default
FILE NAME: \\pc1.com\dfs\Bridges\220782 (WO 12 SN 081-0126)\02 Design (MS)\64508-03 - SCD.dgn

| | |
|---------------|-----------|
| DRAWN - OWS | REvised - |
| CHECKED - HJH | REvised - |
| DATE - | REvised - |

STATE OF ILLINOIS
DEPARTMENT OF TRANSPORTATION

| | |
|--|------------------------------|
| C.H.25 (286TH STREET) CROSSING 1-88 (FAI 88) | |
| SCHEDULE OF QUANTITIES | |
| SCALE: | SHEET 3 OF SHEETS STA TOSTA. |

| | | | |
|---------------------------|----------------|--------|-----|
| SECTION | COUNTY | SHEETS | SET |
| 88 | (161-1HB-5)BJR | 5 | 3 |
| CONTRACT NO. 64S08 | | | |
| ILLINOIS FED. AID PROJECT | | | |



ELEVATION

SCOPE OF WORK

- Ⓐ Barrier Rail Improvements
- Ⓑ Barrier Rail Repairs

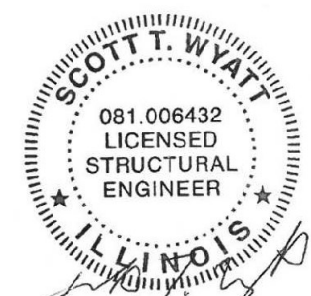
TOTAL BILL OF MATERIAL

| ITEM | UNIT | TOTAL |
|-------------------------------------|---------|-------|
| Bridge Rail Removal | Foot | 485 |
| Retrofit Concrete Parapet | Foot | 485 |
| * Acrylic Coating | Sq. Yd. | 379 |
| Protective Shield | Sq. Yd. | 411 |
| Structural Repair of Concrete <= 5" | Sq. Ft. | 27 |

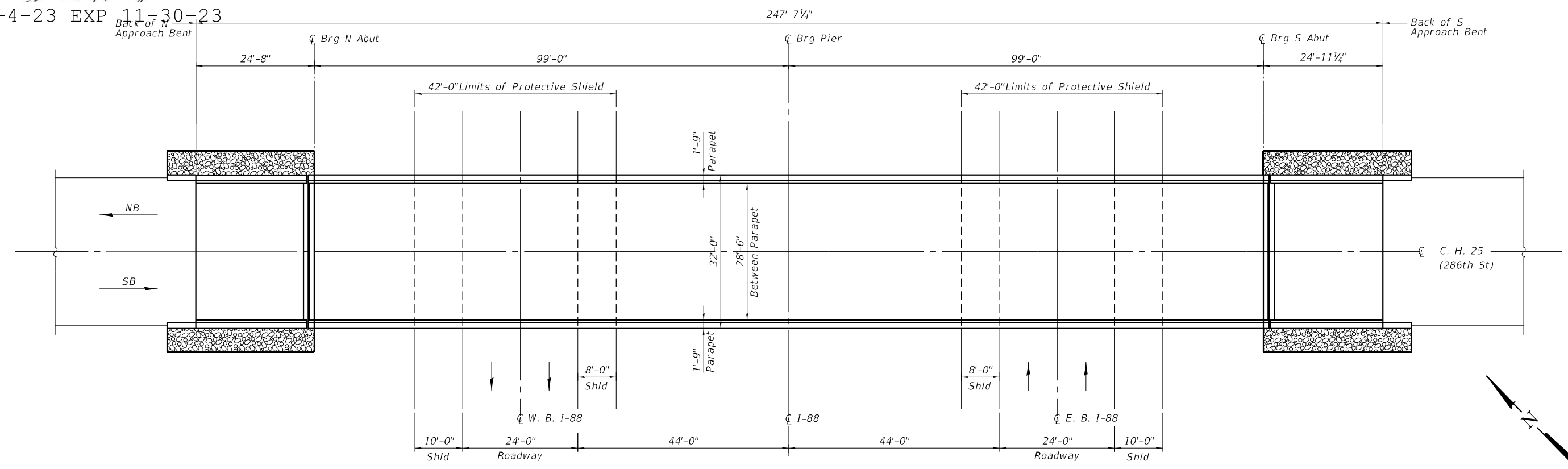
* On Existing Parapet and Parapet Retrofit

GENERAL NOTES

Plan dimensions and details relative to the existing plans are subject to nominal construction variations. The Contractor shall field verify existing dimensions and details affecting new construction and make necessary approved adjustments prior to construction or ordering materials. Such variations shall not be cause for additional compensation for a change in scope of the work, however, the Contractor will be paid for the quantity actually furnished at the unit price bid for the work. Traffic will be detoured during construction.



5-4-23 EXP 11-30-23



PLAN

MODEL: Default; FILE NAME: \\kpf\com\dis\Bridges\2200762 (WO 12 SN 081-0126)\02_Design (MS)\45308-04 - Plan and Elevation.dgn

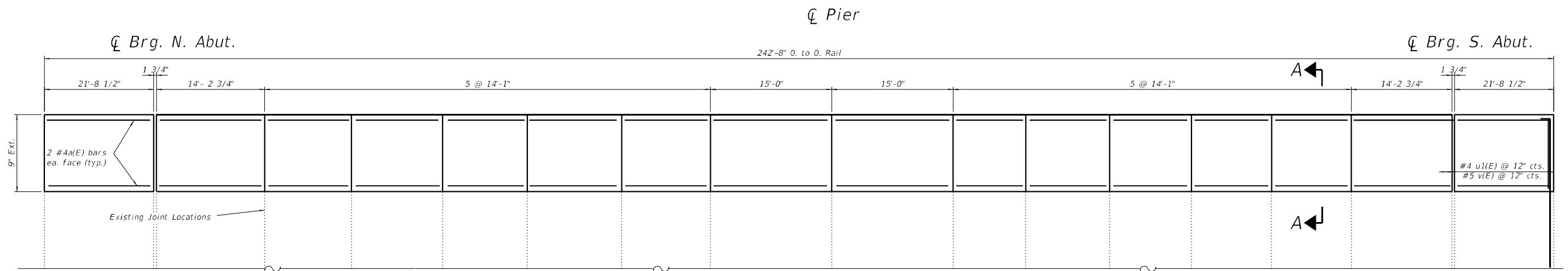


| | | |
|--------------|------------|-----------|
| USER NAME = | DESIGNED - | REVISED - |
| PLOT SCALE = | CHECKED - | REVISED - |
| PLOT DATE = | DRAWN - | REVISED - |
| | CHECKED - | REVISED - |

STATE OF ILLINOIS
DEPARTMENT OF TRANSPORTATION

SN 081-0126 C.H. 25 (286th STREET) OVER I-88 (FAI 88)
PLAN AND ELEVATION

| | | | | |
|---------------------------|------------------------|--------------------|----------------|-------------|
| F.A. RTE. 88 | SECTION (161-1HB-5)BJR | COUNTY ROCK ISLAND | TOTAL SHEETS 5 | SHEET NO. 4 |
| CONTRACT NO. 64S08 | | | | |
| ILLINOIS FED. AID PROJECT | | | | |

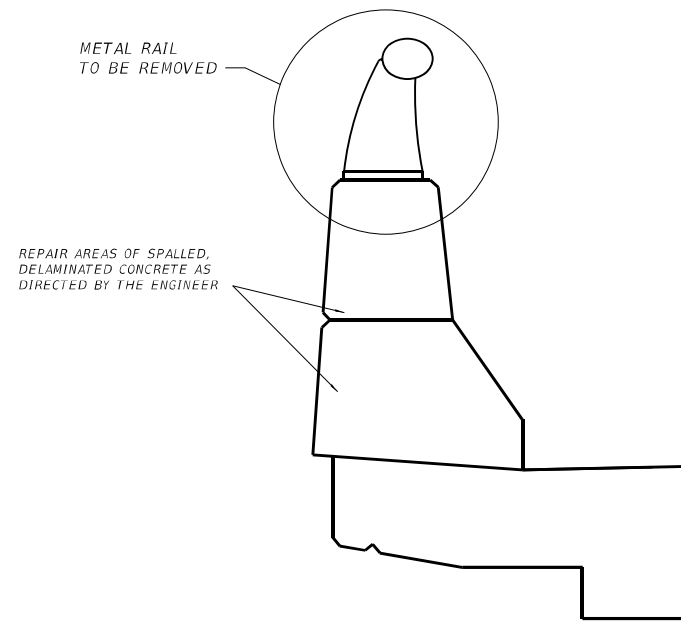


If the anchorage section of the approach guardrail conflicts with the barrier improvements, it shall be removed during rail removal and replaced after the barrier concrete has cured. Cost included with Remove Barrier Rail.

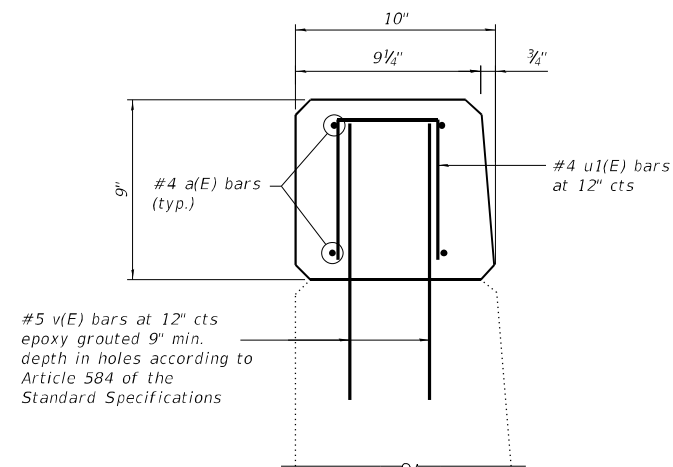
INSIDE ELEVATION WEST BARRIER (EAST SIMILAR)

NOTES

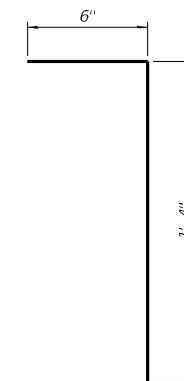
1. All exposed edges shall be chamfered $\frac{3}{4}$ "
2. Cost of all materials, labor and equipment to complete the work as detailed and specified in the Special Provisions shall be included in the cost of "Retrofit Concrete Parapet" with the exception of Bridge Rail removal and Acrylic Coating.
3. Retrofit Concrete Parapet shall be used on both sides of the structure over the full length of the structure.
4. Acrylic Coating to be applied to inside face, outside face and top surface of the existing and reconstructed parapet.



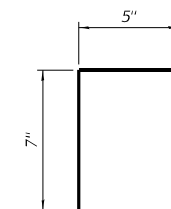
EXISTING BARRIER SECTION



SECTION A-A



BAR v(E)



BAR u1(E)

MODEL: Default
FILE NAME: \\kpff.com\dis\Bridges\2200762 (WO 12 SN 081-0126)\02_Design (MS)\454508-05 - Barrier Improvements.dgn



| | | |
|--------------|------------|-----------|
| USER NAME = | DESIGNED - | REVISED - |
| PLOT SCALE = | CHECKED - | REVISED - |
| PLOT DATE = | DRAWN - | REVISED - |
| | CHECKED - | REVISED - |

STATE OF ILLINOIS
DEPARTMENT OF TRANSPORTATION

SN 081-0126 C.H. 25 (286th STREET) OVER I-88 (FAI 88)
BARRIER IMPROVEMENTS

| F.A. RTE. | SECTION | COUNTY | TOTAL SHEETS | SHEET NO. |
|---------------------------|----------------|-------------|--------------|-----------|
| 88 | (161-1HB-5)BJR | ROCK ISLAND | 5 | 5 |
| CONTRACT NO. 64S08 | | | | |
| ILLINOIS FED. AID PROJECT | | | | |