

GENERAL NOTES

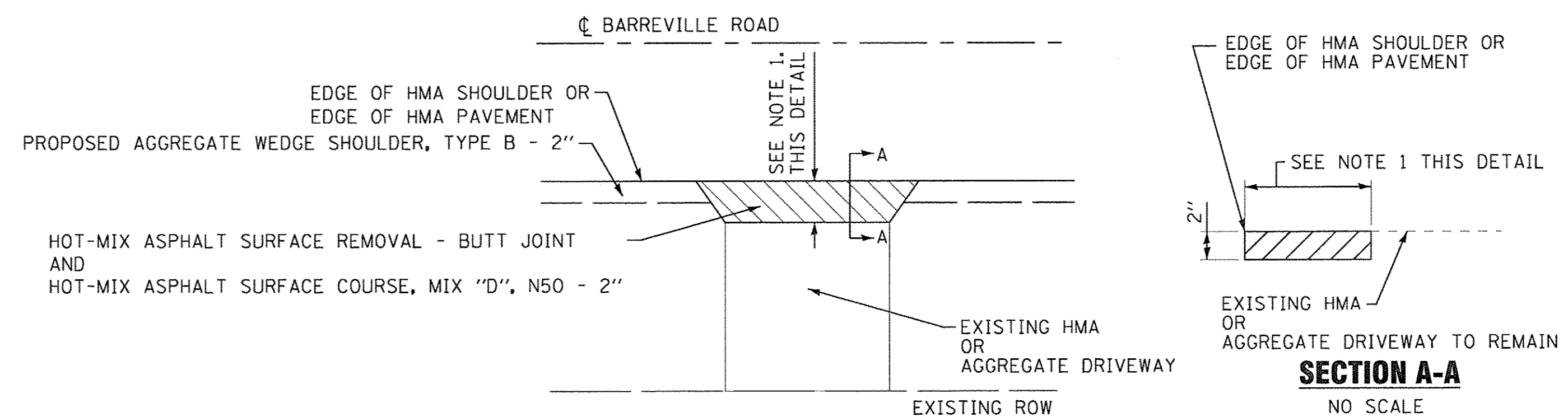
- ALL CONSTRUCTION SHALL BE DONE IN ACCORDANCE WITH THE DETAILS IN THE PLANS, THE SPECIAL PROVISIONS INCLUDED IN THE CONTRACT DOCUMENTS, AND THE LATEST EDITION OF THE FOLLOWING STATE OF ILLINOIS SPECIFICATIONS: "THE STANDARD SPECIFICATIONS FOR ROAD AND BRIDGE CONSTRUCTION" (REFERRED TO AS THE "STANDARD SPECIFICATIONS"), THE "SUPPLEMENTAL SPECIFICATIONS AND RECURRING SPECIAL PROVISIONS", THE "MANUAL ON UNIFORM TRAFFIC CONTROL DEVICES FOR STREETS AND HIGHWAYS", THE "MANUAL OF TEST PROCEDURES FOR MATERIALS" AND THE "STANDARD SPECIFICATIONS FOR WATER AND SEWER MAIN CONSTRUCTION IN ILLINOIS".
- THE CONTRACTOR SHALL NOTIFY THE VILLAGE PUBLIC WORKS DIRECTOR AT LEAST 48 HOURS IN ADVANCE OF BEGINNING WORK TO OBTAIN VILLAGE UTILITY LOCATIONS.
- THE CONTRACTOR MAY OBTAIN MUNICIPAL WATER IN BULK, AT NO CHARGE, AS LONG AS THERE IS NOT A "WATERING BAN" IN EFFECT. THE INDISCRIMINATE USE OF FIRE HYDRANTS IS STRICTLY PROHIBITED. WATER FOR CONSTRUCTION SHALL BE METERED OR OTHERWISE ACCOUNTED FOR AND A DAILY LOG MAINTAINED. THE CONTRACTOR SHALL PROVIDE THE WATER TRUCK AND DRIVER REQUIRED TO OBTAIN AND TRANSPORT THIS WATER. THE VILLAGE RESERVES THE RIGHT TO RESTRICT OR REFUSE THE USE OF VILLAGE WATER IF DEEMED NECESSARY.
- ACCESS TO PRIVATE DRIVEWAYS SHALL BE PROVIDED AT ALL TIMES EXCEPT DURING ACTUAL CONSTRUCTION ADJACENT THERE TO. TEMPORARY RAMPS SHALL BE CONSTRUCTED AS NEEDED TO PROVIDE SUCH ACCESS, UTILIZING CRUSHED STONE OR CRUSHED GRAVEL AS TEMPORARY ACCESS.
- THE CONTRACTOR SHALL CONTACT THE LOCAL AGENCY MATERIAL INSPECTOR AT LEAST 48 HOURS PRIOR TO ANY CONCRETE OR HOT-MIX ASPHALT MATERIAL DELIVERIES.
- THE CURB SHALL BE TAPERED TO THE GUTTER IN A FIVE (5) FOOT LENGTH WHEREVER THE CURB AND GUTTER TERMINATES, WITH AN EXPANSION JOINT PLACED AT THE START OF THE TAPER.
- ALL AGGREGATE USED ON THIS PROJECT SHALL BE CRUSHED MATERIAL.
- THE CONTRACTOR WILL ONLY BE ALLOWED TO REMOVE AND REPLACE CURB AND GUTTER ON ONE SIDE OF THE ROAD AT A TIME TO MINIMIZE CONGESTION. REPLACEMENT MUST BE COMPLETE ON ONE SIDE OF THE ROAD BEFORE THE CONTRACTOR IS ALLOWED TO BEGIN REMOVING CURB AND GUTTER ON THE OTHER SIDE OF THE ROAD.
- THE FINISHED HOT-MIX ASPHALT SURFACE SHALL BE CONSTRUCTED 0.25 INCHES ABOVE THE GUTTER FLAG.
- NO STREET CLOSURES WILL BE ALLOWED.
- ON RURAL PAVEMENTS BEING RESURFACED THAT DO NOT HAVE A PAVED SHOULDER, MAILBOX TURNOUTS SHALL BE PROVIDED AT EACH EXISTING MAILBOX FOR THE FULL WIDTH OF THE SHOULDER UP TO 6 INCHES FROM THE FACE OF THE EXISTING MAILBOX. MAILBOX TURNOUTS SHALL BE AT LEAST 2 INCHES THICK AND SHALL BE PAID FOR AS HOT-MIX ASPHALT SURFACE COURSE.
- WHEN MILLED PAVEMENT IS OPEN TO TRAFFIC, THE MAXIMUM GRADE DIFFERENTIAL BETWEEN PASSES OF THE MILLING MACHINE SHALL NOT EXCEED 1 1/4 INCHES WHERE THE SPEED LIMIT IS 45 MPH OR LESS, AND SHALL NOT EXCEED 1 INCH WHERE THE SPEED LIMIT IS OVER 45 MPH. A MAXIMUM GRADE DIFFERENCE OF 3 INCHES MAY BE ALLOWED IF THE EDGE OF THE MILLING IS SLOPED A MINIMUM OF 1:3 (V:H), AS DETERMINED BY THE ENGINEER.

INDEX OF SHEETS

SHEET NO.	TITLE
1	COVER SHEET
2	INDEX OF SHEETS, HIGHWAY STANDARDS, DETAILS AND GENERAL NOTES
3	4 SUMMARY OF QUANTITIES
5	TYPICAL SECTIONS AND HOT-MIX ASPHALT MIXTURE REQUIREMENTS
6	14 ROADWAY PLAN - BARREVILLE ROAD
15	DISTRICT 1 DETAIL - BD-24 CURB OR CURB AND GUTTER REMOVAL AND REPLACEMENT
16	DISTRICT 1 DETAIL - TC-10 TRAFFIC CONTROL AND PROTECTION FOR SIDE ROADS, INTERSECTIONS, AND DRIVEWAYS
17	DISTRICT 1 DETAIL - TC-11 TYPICAL APPLICATIONS RAISED REFLECTIVE PAVEMENT MARKERS (SNOW-PLOW RESISTANT)
18	DISTRICT 1 DETAIL - TC-13 DISTRICT ONE TYPICAL PAVEMENT MARKINGS
19	DISTRICT 1 DETAIL - TC-22 ARTERIAL ROAD INFORMATION SIGN

HIGHWAY STANDARDS

000001-06	STANDARD SYMBOLS, ABBREVIATIONS AND PATTERNS
606001-06	CONCRETE CURB TYPE B AND COMBINATION CONCRETE CURB AND GUTTER
701011-04	OFF-RD MOVING OPERATIONS, 2L, 2W, DAY ONLY
701301-04	LANE CLOSURE, 2L, 2W, SHORT TIME OPERATIONS
701311-03	LANE CLOSURE 2L, 2W MOVING OPERATIONS - DAY ONLY
701501-06	URBAN LANE CLOSURE, 2L, 2W, UNDIVIDED
701901-06	TRAFFIC CONTROL DEVICES
780001-05	TYPICAL PAVEMENT MARKINGS
781001-04	TYPICAL APPLICATIONS RAISED REFLECTIVE PAVEMENT MARKERS
B.L.R. 24-2	MAILBOX TURNOUT FOR LOCAL ROADS



- NOTES: 1. 3' MIN WHEN MATCHING EXISTING HMA DRIVEWAY UNLESS OTHERWISE DIMENSIONED
 3' MIN WHEN MATCHING EXISTING AGGREGATE DRIVEWAY UNLESS OTHERWISE DIMENSIONED

HMA DRIVEWAY DETAIL

NO SCALE

COPYRIGHT © 2017 BY BAXTER & WOODMAN, INC.
 STATE OF ILLINOIS - PROFESSIONAL DESIGN FIRM
 LICENSE NO. - J84-00121 - EXPIRES 4/30/2017
 10:28:45 AM 3/30/2017
 ...\\baxwood\p\proj\CrystalLake\PRAGV\140548-Barreville PH 1 and IN\CADD\140548SHT-GenNotes.dgn



DESIGNED - JDW	REVISED -
DRAWN - KAR	REVISED -
CHECKED - JJF	REVISED -
DATE - 01-18-17	FILE - 140548SHT-GenNotes.dgn

STATE OF ILLINOIS
 DEPARTMENT OF TRANSPORTATION

**INDEX OF SHEETS, HIGHWAY STANDARDS,
 DETAILS AND GENERAL NOTES**

SCALE: NONE

STA. TO STA.

F.A.U. RTE.	SECTION	COUNTY	TOTAL SHEETS	SHEET NO.
0087	14-00010-00-RS	McHENRY	19	2
			CONTRACT NO. 61A73	
FED. ROAD DIST. NO. 1 ILLINOIS FED. AID PROJECT: M-4003(895)				

SUMMARY OF QUANTITIES

CODE NO.	ITEM	UNIT	TOTAL QUANTITY	CONSTRUCTION CODE
				80% FEDERAL 20% LOCAL
				ROADWAY
				0005 URBAN
21101615	TOPSOIL FURNISH AND PLACE, 4"	SQ YD	40	40
25200100	SODDING	SQ YD	40	40
30300112	AGGREGATE SUBGRADE IMPROVEMENT 12"	SQ YD	2,975	2,975
35101400	AGGREGATE BASE COURSE, TYPE B	TON	571	571
35800100	PREPARATION OF BASE	SQ YD	21,000	21,000
40600290	BITUMINOUS MATERIALS (TACK COAT)	POUND	51,977	51,977
40600982	HOT-MIX ASPHALT SURFACE REMOVAL - BUTT JOINT	SQ YD	449	449
40603080	HOT-MIX ASPHALT BINDER COURSE, IL-19.0, N50	TON	2,781	2,781
40603335	HOT-MIX ASPHALT SURFACE COURSE, MIX "D", N50	TON	1,881	1,881
42001300	PROTECTIVE COAT	SQ YD	53	53
44000164	HOT-MIX ASPHALT SURFACE REMOVAL, 3 3/4"	SQ YD	21,000	21,000
48102100	AGGREGATE WEDGE SHOULDER, TYPE B	TON	1,114	1,114
67100100	MOBILIZATION	LSUM	1	1
70102620	TRAFFIC CONTROL AND PROTECTION, STANDARD 701501	LSUM	1	1
70102635	TRAFFIC CONTROL AND PROTECTION, STANDARD 701701	LSUM	1	1

* INDICATES SPECIALTY ITEM

3/30/2017 10:29:42 AM
 \\corp.baxwood.com\Projects\Crystal Lake\PRAGVA\0548-Barrville PH 1 and IL\CADD\40548SHT-S00.dgn
 ...\\CADD\PIers\40548_pen.tbl
 ...\\caddr\pdef-rw_def\out.dft
 BAXTER & WOODMAN, INC.
 STATE OF ILLINOIS PROFESSIONAL DESIGN FIRM
 LICENSE NO. 188-00121 - EXPIRES 4/30/2017
 418CJC



DESIGNED - JDW	REVISED -
DRAWN - KAR	REVISED -
CHECKED - JJF	REVISED -
DATE - 01-18-17	FILE - 140548SHT-S00.dgn

**STATE OF ILLINOIS
DEPARTMENT OF TRANSPORTATION**

SUMMARY OF QUANTITIES

SCALE: NONE

STA. TO STA.

F.A.U. RTE.	SECTION	COUNTY	TOTAL SHEETS	SHEET NO.
0087	14-00010-00-RS	McHENRY	19	3
FED. ROAD DIST. NO. 1 ILLINOIS FED. AID PROJECT: M-4003(895)			CONTRACT NO. 61A73	

SUMMARY OF QUANTITIES

CODE NO.	ITEM	UNIT	TOTAL QUANTITY	CONSTRUCTION CODE	
				80% FEDERAL 20% LOCAL	
				ROADWAY	
				0005	URBAN
70300100	SHORT-TERM PAVEMENT MARKING	FOOT	600	600	600
70300150	SHORT TERM PAVEMENT MARKING REMOVAL	SQ FT	201	201	201
70300220	TEMPORARY PAVEMENT MARKING - LINE 4"	FOOT	3,600	3,600	3,600
* 78000200	THERMOPLASTIC PAVEMENT MARKING - LINE 4"	FOOT	1,800	1,800	1,800
* 78100100	RAISED REFLECTIVE PAVEMENT MARKER	EACH	18	18	18
* 78300200	RAISED REFLECTIVE PAVEMENT MARKER REMOVAL	EACH	6	6	6
Z0004562	COMBINATION CONCRETE CURB AND GUTTER REMOVAL AND REPLACEMENT	FOOT	229	229	229
Z0003300	BASE COURSE REMOVAL (SPECIAL)	SQ YD	2,975	2,975	2,975
Z0019600	DUST CONTROL WATERING	UNIT	256	256	256
Z0030850	TEMPORARY INFORMATION SIGNING	SQ FT	260	260	260
X2020110	GRADING AND SHAPING SHOULDERS	UNIT	136	136	136
X4021000	TEMPORARY ACCESS (PRIVATE ENTRANCE)	EACH	31	31	31
X4023000	TEMPORARY ACCESS (ROAD)	EACH	10	10	10
X7030005	TEMPORARY PAVEMENT MARKING REMOVAL	SQ FT	1,201	1,201	1,201

* INDICATES SPECIALTY ITEM

COPYRIGHT © 2017 BY BAXTER & WOODMAN, INC.
 STATE OF ILLINOIS - PROFESSIONAL DESIGN FIRM
 LICENSE NO. - 184-00021 - EXPIRES 4/30/2017
 10:28:27 AM 3/30/2017
 \\corp.baxwood.com\Projects\Crystril Lake\PRAGV\40548-Borreville PH 1 and I\CADD\40548SHT-S00.dgn



DESIGNED - JDW	REVISED -
DRAWN - KAR	REVISED -
CHECKED - JJF	REVISED -
DATE - 01-18-17	FILE - 140548SHT-S00.dgn

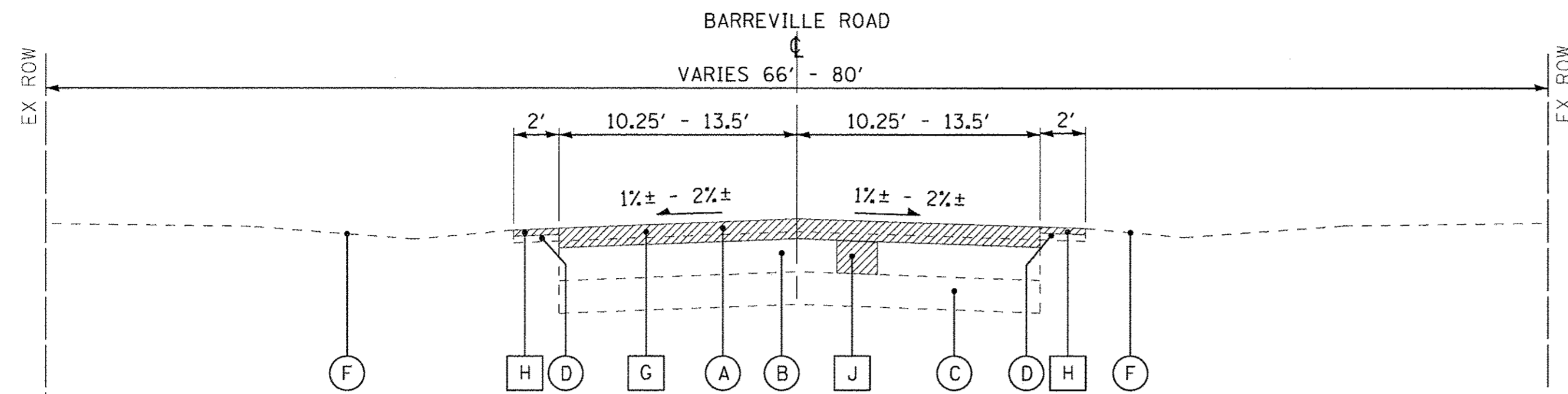
**STATE OF ILLINOIS
DEPARTMENT OF TRANSPORTATION**

SUMMARY OF QUANTITIES

SCALE: NONE

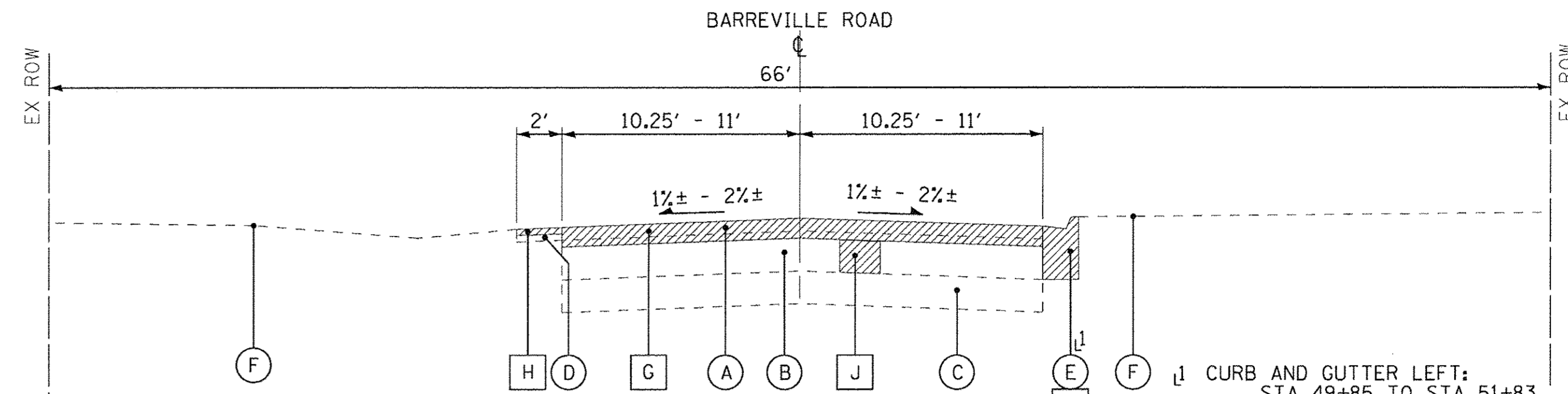
STA. TO STA.

F.A.U. RTE.	SECTION	COUNTY	TOTAL SHEETS	SHEET NO.
0087	14-00010-00-RS	MCHEMRY	19	4
CONTRACT NO. 61A73				
FED. ROAD DIST. NO. 1 ILLINOIS FED. AID PROJECT: M-4003895				



EXISTING TYPICAL SECTION

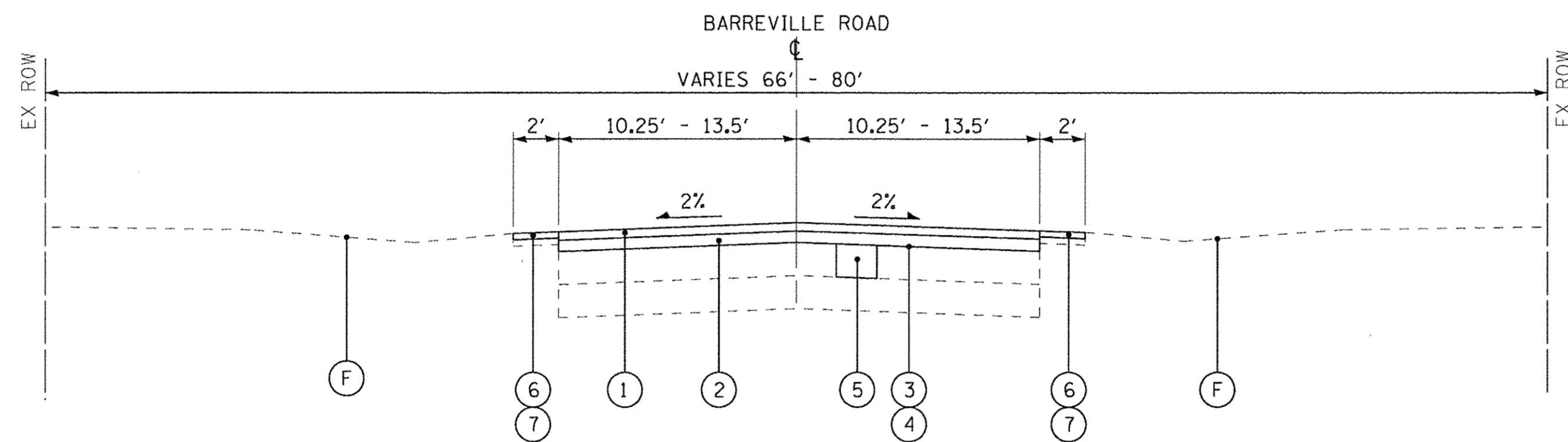
STA 11+50 TO STA 23+61
 STA 25+66 TO STA 31+92
 STA 54+80 TO STA 56+93
 STA 58+77 TO STA 77+17
 STA 81+55 TO STA 93+35
 STA 98+51 TO STA 98+85
 BARREVILLE ROAD



EXISTING TYPICAL SECTION

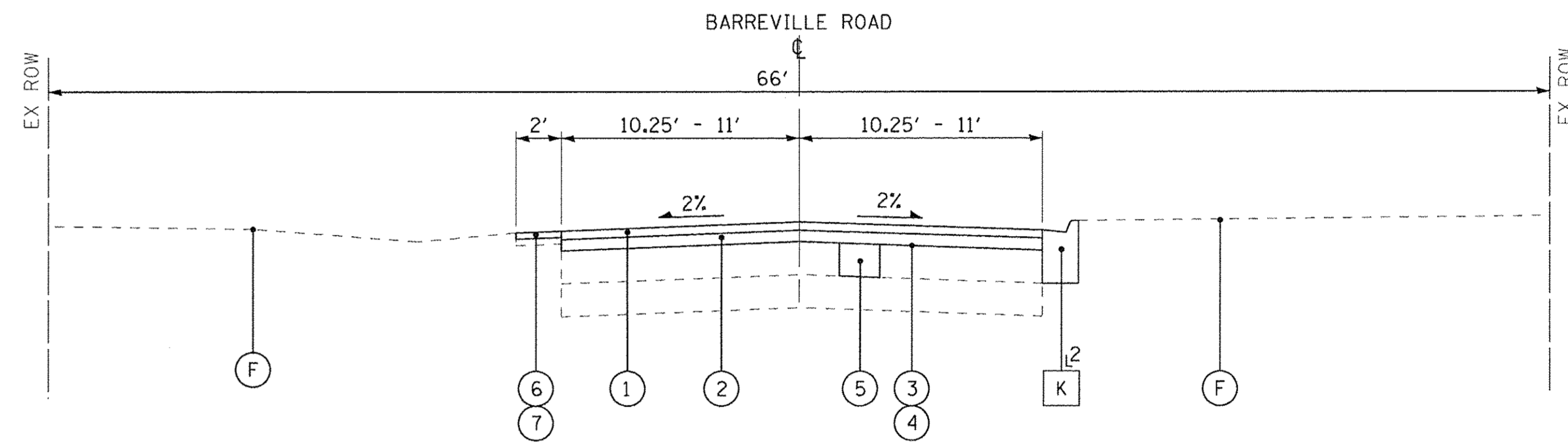
STA 23+61 TO STA 25+66
 STA 31+92 TO STA 54+80
 STA 56+93 TO STA 58+77
 STA 77+17 TO STA 81+53
 STA 93+35 TO STA 98+51
 STA 98+85 TO STA 100+70
 BARREVILLE ROAD

1 CURB AND GUTTER LEFT:
 STA 49+85 TO STA 51+83,
 STA 56+93 TO STA 58+77,
 STA 77+17 TO STA 81+02,
 STA 93+35 TO STA 98+51
 STA 98+85 TO STA 100+70
 CURB AND GUTTER RIGHT:
 STA 23+61 TO STA 25+66
 STA 31+92 TO STA 54+80,
 STA 77+17 TO STA 81+55
 2 AS DETERMINED BY THE ENGINEER



PROPOSED TYPICAL SECTION

STA 11+50 TO STA 23+61
 STA 25+66 TO STA 31+92
 STA 54+80 TO STA 56+93
 STA 58+77 TO STA 77+17
 STA 81+55 TO STA 93+35
 STA 98+51 TO STA 98+85
 BARREVILLE ROAD



PROPOSED TYPICAL SECTION

STA 23+61 TO STA 25+66
 STA 31+92 TO STA 54+80
 STA 56+93 TO STA 58+77
 STA 77+17 TO STA 81+53
 STA 93+35 TO STA 98+51
 STA 98+85 TO STA 100+70
 BARREVILLE ROAD

2 AS DETERMINED BY THE ENGINEER

EXISTING LEGEND

- (A) EXISTING HOT-MIX ASPHALT PAVEMENT (± 3.5")
- (B) EXISTING AGGREGATE BASE COURSE (± 12")
- (C) EXISTING SUB-GRADE
- (D) EXISTING AGGREGATE SHOULDER (± 4")
- (E) EXISTING CURB AND GUTTER
- (F) EXISTING GROUND SURFACE
- (G) HOT-MIX ASPHALT SURFACE REMOVAL, 3 3/4"
- (H) AGGREGATE SHOULDER REMOVAL, 2" MIN EXACT THICKNESS VARIES (MATCH HOT-MIX ASPHALT SURFACE REMOVAL UNLESS OTHERWISE NOTED) (NOT MEASURED FOR PAYMENT AND NOT PAID FOR SEPARATELY)
- (J) BASE COURSE REMOVAL (SPECIAL)
- (K) COMBINATION CONCRETE CURB AND GUTTER REMOVAL AND REPLACEMENT
- [Hatched Box] ITEM TO BE REMOVED

PROPOSED LEGEND

- (1) HOT-MIX ASPHALT SURFACE COURSE, MIX "D", N50 - 1 1/2"
- (2) HOT-MIX ASPHALT BINDER COURSE, IL-19.0, N50 - 2 1/4"
- (3) PREPARATION OF BASE
- (4) AGGREGATE BASE COURSE, TYPE B (± 1") (AS NEEDED TO MATCH EXISTING GRADE)
- (5) AGGREGATE SUBGRADE IMPROVEMENT, 12"
- (6) GRADING AND SHAPING SHOULDERS
- (7) AGGREGATE WEDGE SHOULDER, TYPE B

HOT-MIX ASPHALT MIXTURE REQUIREMENTS

MIXTURE TYPE	AIR VOIDS @ Ndes
RESURFACING	
HOT-MIX ASPHALT SURFACE COURSE, MIX "D", N50; (IL 9.5mm); 1-1/2"	4% @ 50 Gyr.
HOT-MIX ASPHALT BINDER COURSE, IL-19.0, N50; 2-1/4"	4% @ 50 Gyr.
DRIVEWAYS	
HOT-MIX ASPHALT SURFACE COURSE, MIX "D", N50; (IL 9.5mm); 2"	4% @ 50 Gyr.

THE UNIT WEIGHT USED TO CALCULATE ALL HMA SURFACE MIXTURE QUANTITIES IS 112 LBS/SQ YD/IN.

THE "AC TYPE" FOR POLYMERIZED HMA MIXES SHALL BE "SBS/SBR PG 76 -22" AND FOR NON-POLYMERIZED HMA THE "AC TYPE" SHALL BE "PG 64 -22" UNLESS MODIFIED BY DISTRICT ONE SPECIAL PROVISIONS.

FOR USE OF RECYCLED MATERIALS SEE SPECIAL PROVISIONS.

COPYRIGHT © 2017 BY BAXTER & WOODMAN, INC. ...\\p01tdr\p01tdr-bw-Default...\\CADD\Plots\140548-SHT-TypSec.dgn
 STATE OF ILLINOIS - PROFESSIONAL DESIGN FIRM LICENSE NO. - JB4-00121 - EXPIRES 4/30/2017
 48cjc 3/30/2017 10:29:31 AM



DESIGNED - JDW	REVISED -
DRAWN - KAR	REVISED -
CHECKED - JJF	REVISED -
DATE - 01-18-17	FILE - 140548SHT-TypSec.dgn

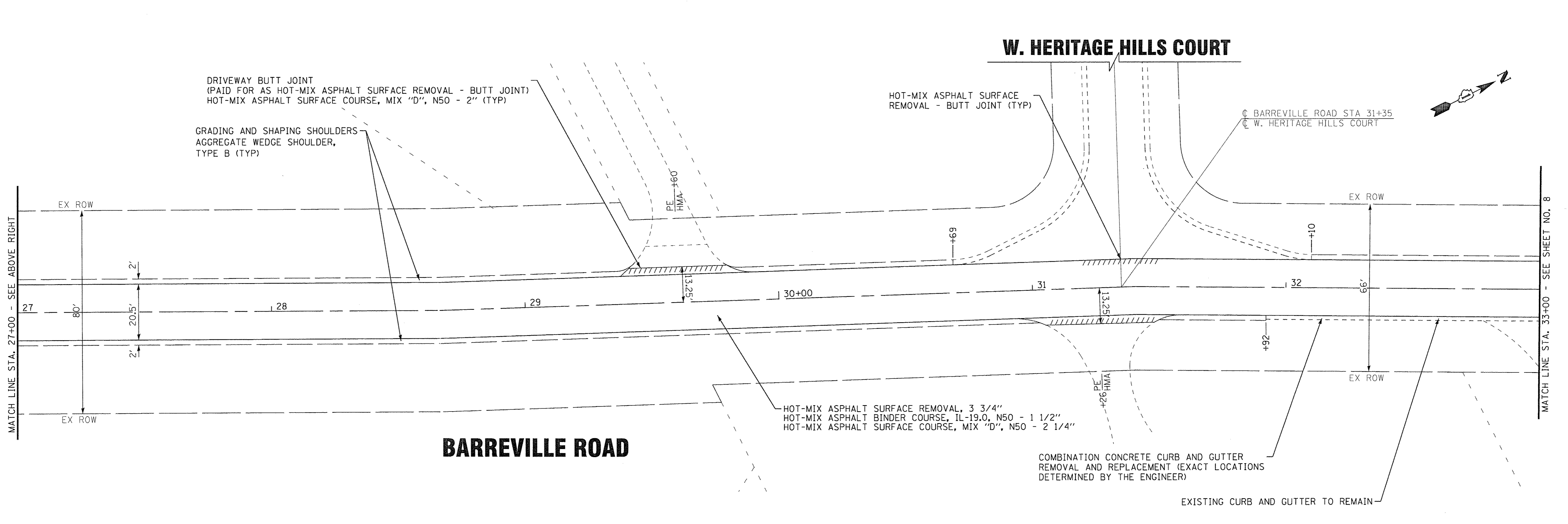
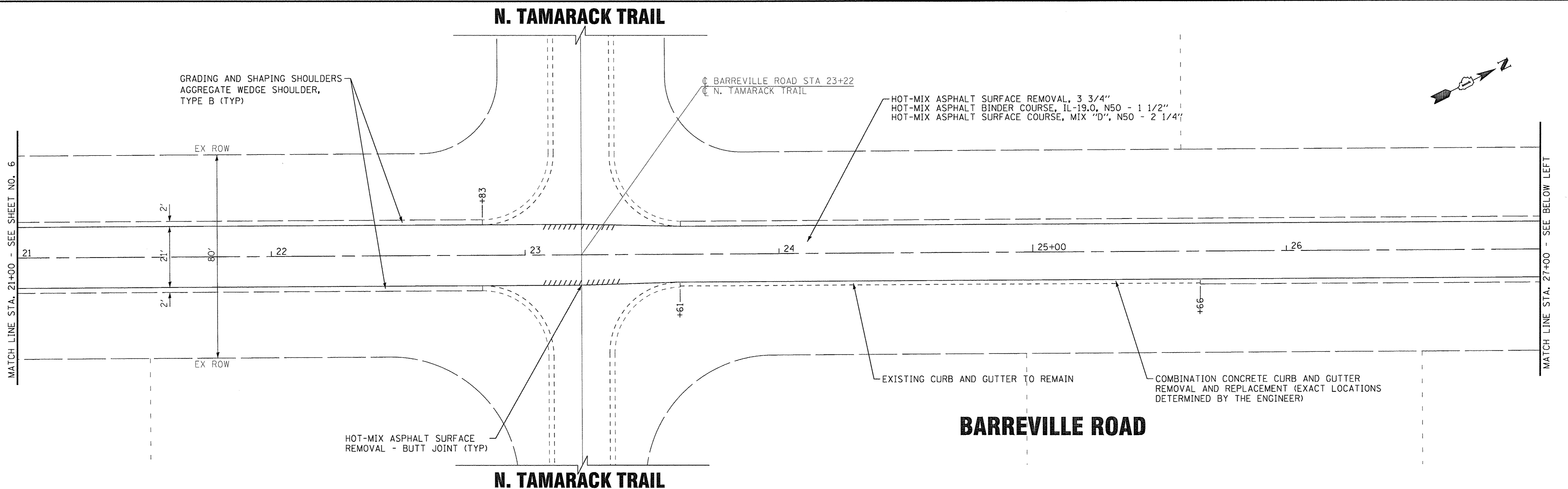
STATE OF ILLINOIS
 DEPARTMENT OF TRANSPORTATION

TYPICAL SECTIONS AND HOT-MIX
 ASPHALT MIXTURE REQUIREMENTS

SCALE: NONE

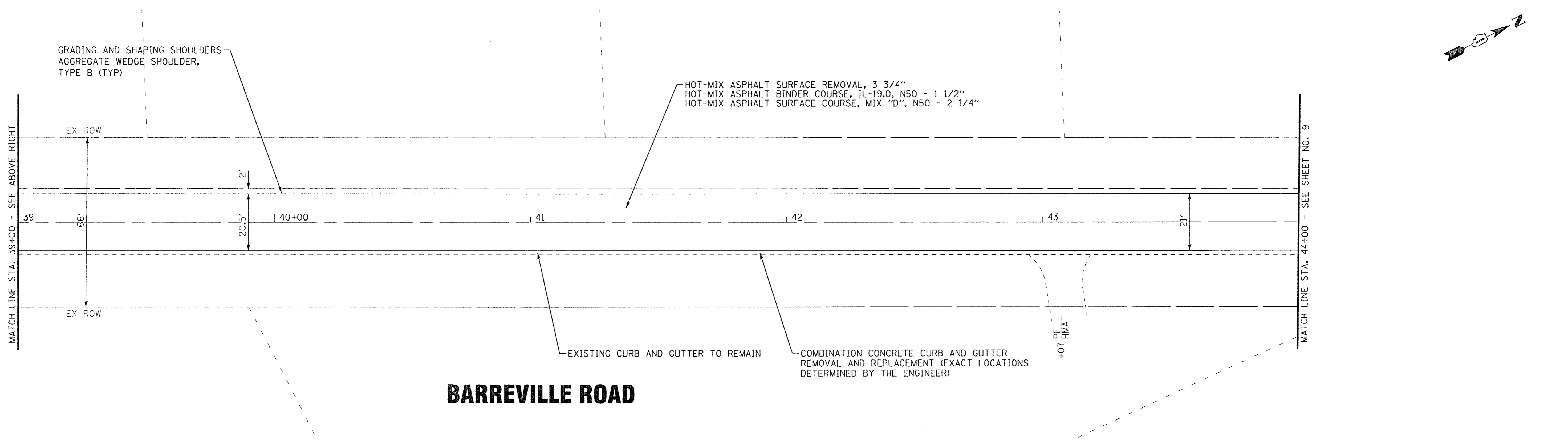
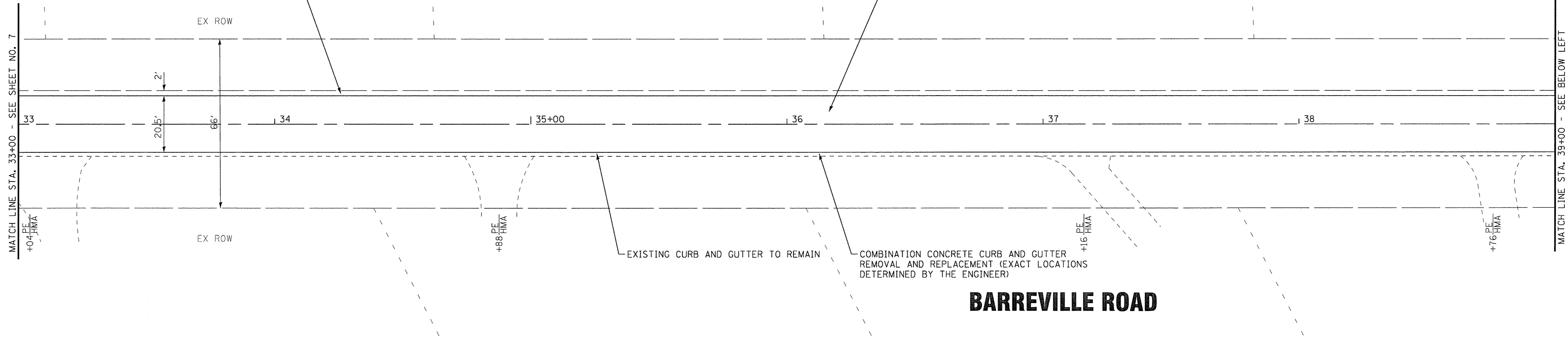
STA. TO STA.

F.A.U. RTE.	SECTION	COUNTY	TOTAL SHEETS	SHEET NO.
0087	14-00010-00-RS	McHENRY	19	5
FED. ROAD DIST. NO. 1 ILLINOIS FED. AID PROJECT: M-4003(895)			CONTRACT NO. 61A73	



COPYRIGHT © 2017 BY BAXTER & WOODMAN, INC.
 STATE OF ILLINOIS - PROFESSIONAL DESIGN FIRM
 LICENSE NO. - 184-00121 - EXPIRES 4/30/2017
 4/8/2017 10:29:36 AM
 ..\plot-dr\dwg\B-W_Draft\B-W_Draft.dwg
 ..\CAD\Plots\140548_Plan02.dgn
 ..\corp\boxwood.com\Projects\CrystalLake\140548-Barreville PH I and J\CADD\140548SHT-Plan02.dgn

	DESIGNED - JDW	REVISED -	STATE OF ILLINOIS DEPARTMENT OF TRANSPORTATION	ROADWAY PLAN - BARREVILLE ROAD		F.A.U. RTE.	SECTION	COUNTY	TOTAL SHEETS	SHEET NO.
	DRAWN - KAR	REVISED -		0087	14-00010-00-RS	McHENRY	19	7		
	CHECKED - JJF	REVISED -		SCALE: 1" = 20' STA. 21+00 TO STA. 33+00		CONTRACT NO. 61A73				
	DATE - 01-18-17	FILE - 140548SHT-Plan02.dgn		FED. ROAD DIST. NO. 1 [ILLINOIS] FED. AID PROJECT: M-4003(895)						



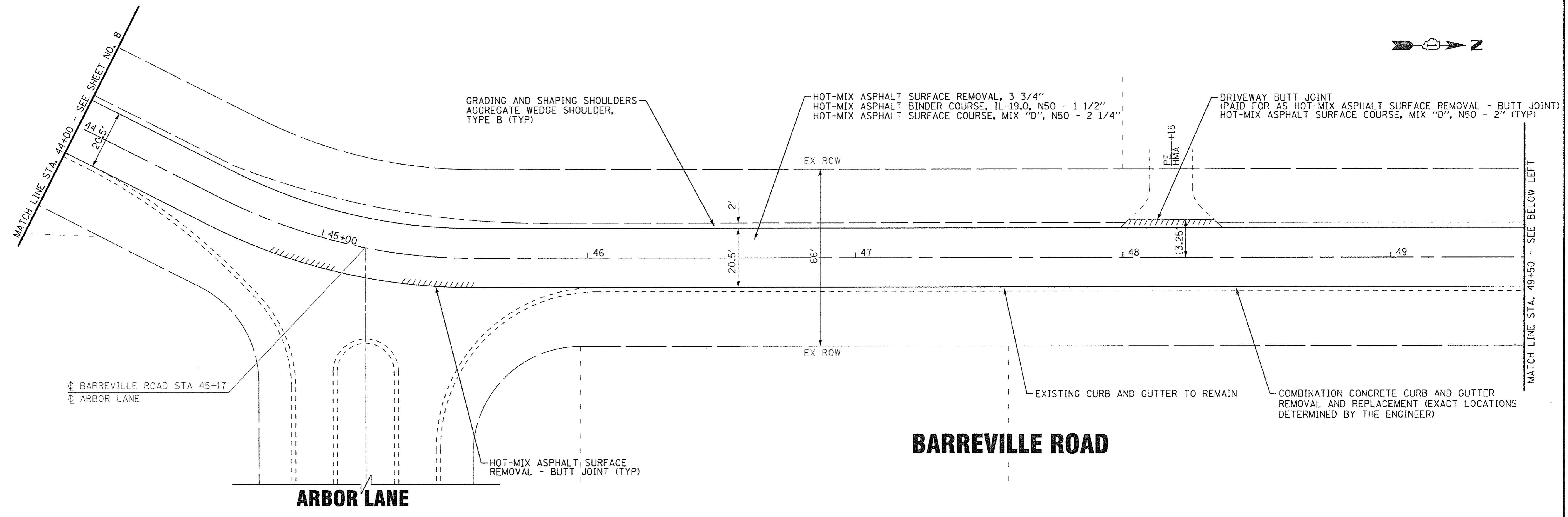
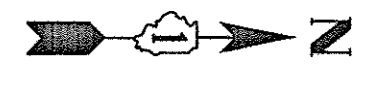
COPYRIGHT © 2017 BY BAXTER & WOODMAN, INC.
 STATE OF ILLINOIS - PROFESSIONAL DESIGN FIRM
 LICENSE NO. - J84-00121 - EXPIRES 4/30/2017
 486cjc 3/30/2017 10:28:37 AM
 ..\p107dr\vdof-bw-Default.dwg
 ..\CADD\Plots\40548_Plan.tbl
 ..\corp\boxwood.com\Projects\CrystallLake\40548-Barreville PH Land IL\CADD\40548SHT-Plan03.dgn

BAXTER & WOODMAN <small>Consulting Engineers</small>	DESIGNED - JDW	REVISED -
	DRAWN - KAR	REVISED -
	CHECKED - JJF	REVISED -
	DATE - 01-18-17	FILE - 140548SHT-Plan03.dgn

STATE OF ILLINOIS
DEPARTMENT OF TRANSPORTATION

ROADWAY PLAN - BARREVILLE ROAD
 SCALE: 1" = 20' STA. 33+00 TO STA. 44+00

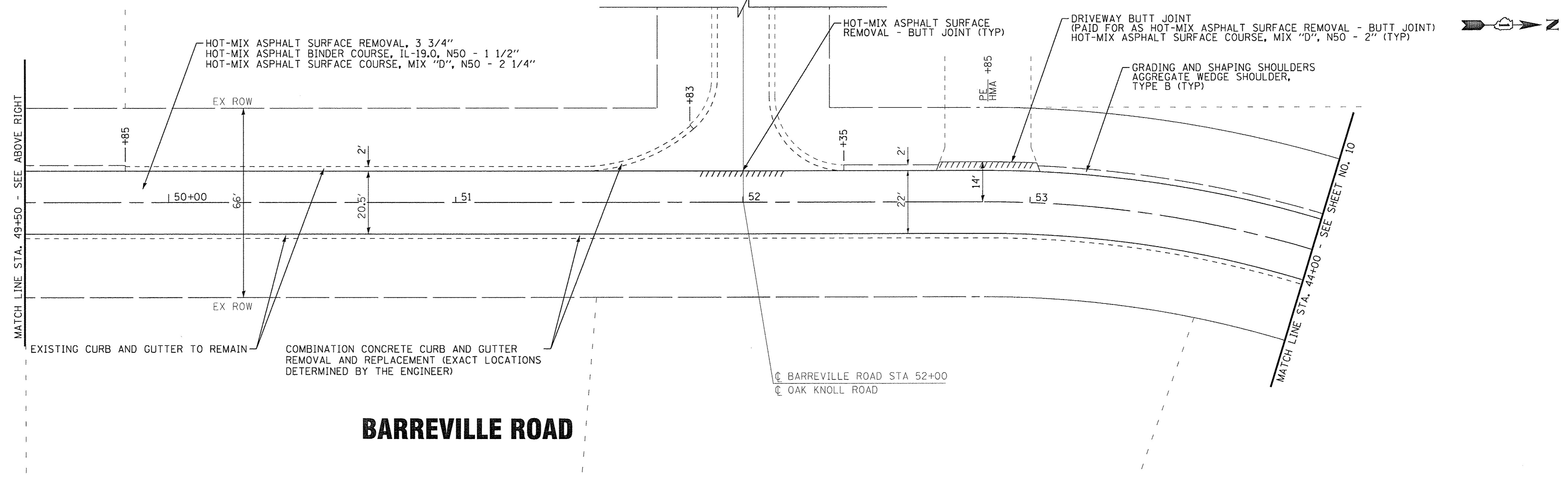
F.A.U. RTE.	SECTION	COUNTY	TOTAL SHEETS	SHEET NO.
0087	14-00010-00-RS	McHENRY	19	8
CONTRACT NO. 61A73				
FED. ROAD DIST. NO. 1 ILLINOIS FED. AID PROJECT: M-4003(895)				



BARREVILLE ROAD

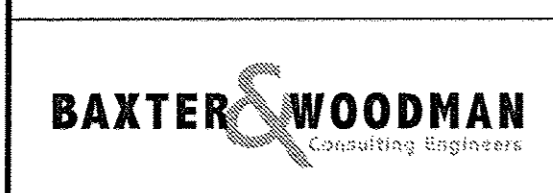
ARBOR LANE

OAK KNOLL ROAD



BARREVILLE ROAD

COPYRIGHT © 2017 BY BAXTER & WOODMAN, INC.
 STATE OF ILLINOIS - PROFESSIONAL DESIGN FIRM
 LICENSE NO. - JBA4-00121 - EXPIRES 4/30/2017
 418cjc 3/23/2017 10:29:38 AM
 ...\\plot-rv\pdr-fw-Default.plt
 ...\\CADD\Plots\140548_pen.tbl
 ...\\corp\boxwood.com\Projects\Crystal Lake\PRAGV\140548-Barreville PH 1 and IL\CADD\140548SHT-Plan04.dgn



DESIGNED - JDW	REVISED -
DRAWN - KAR	REVISED -
CHECKED - JJF	REVISED -
DATE - 01-18-17	FILE - 140548SHT-Plan04.dgn

STATE OF ILLINOIS
DEPARTMENT OF TRANSPORTATION

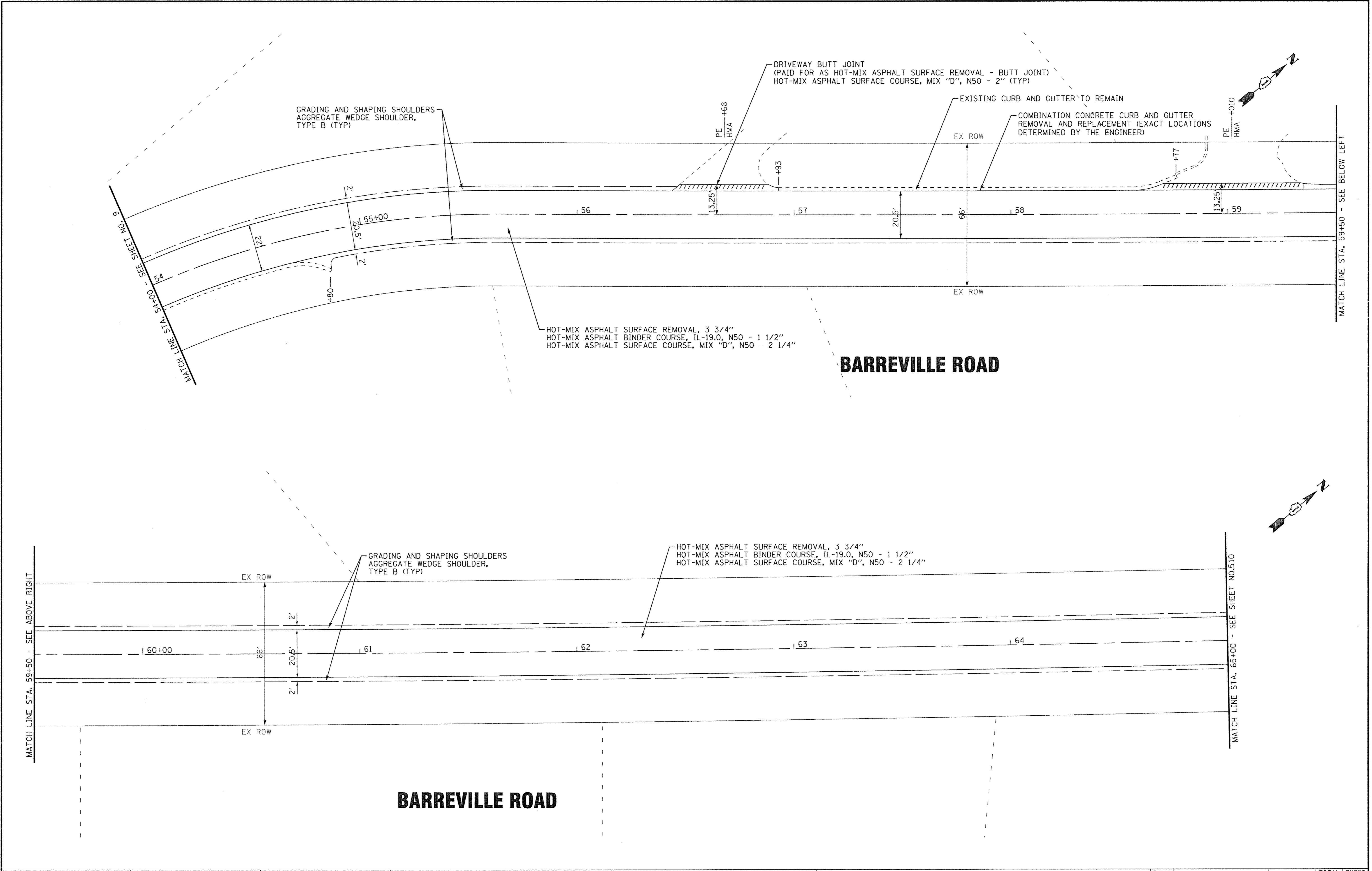
ROADWAY PLAN - BARREVILLE ROAD

SCALE: 1" = 20'

STA. 44+00 TO STA. 54+00

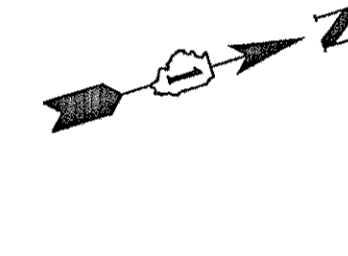
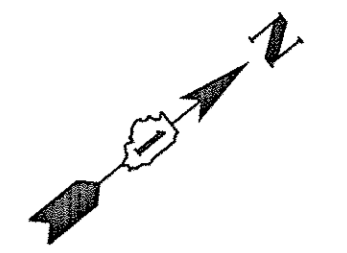
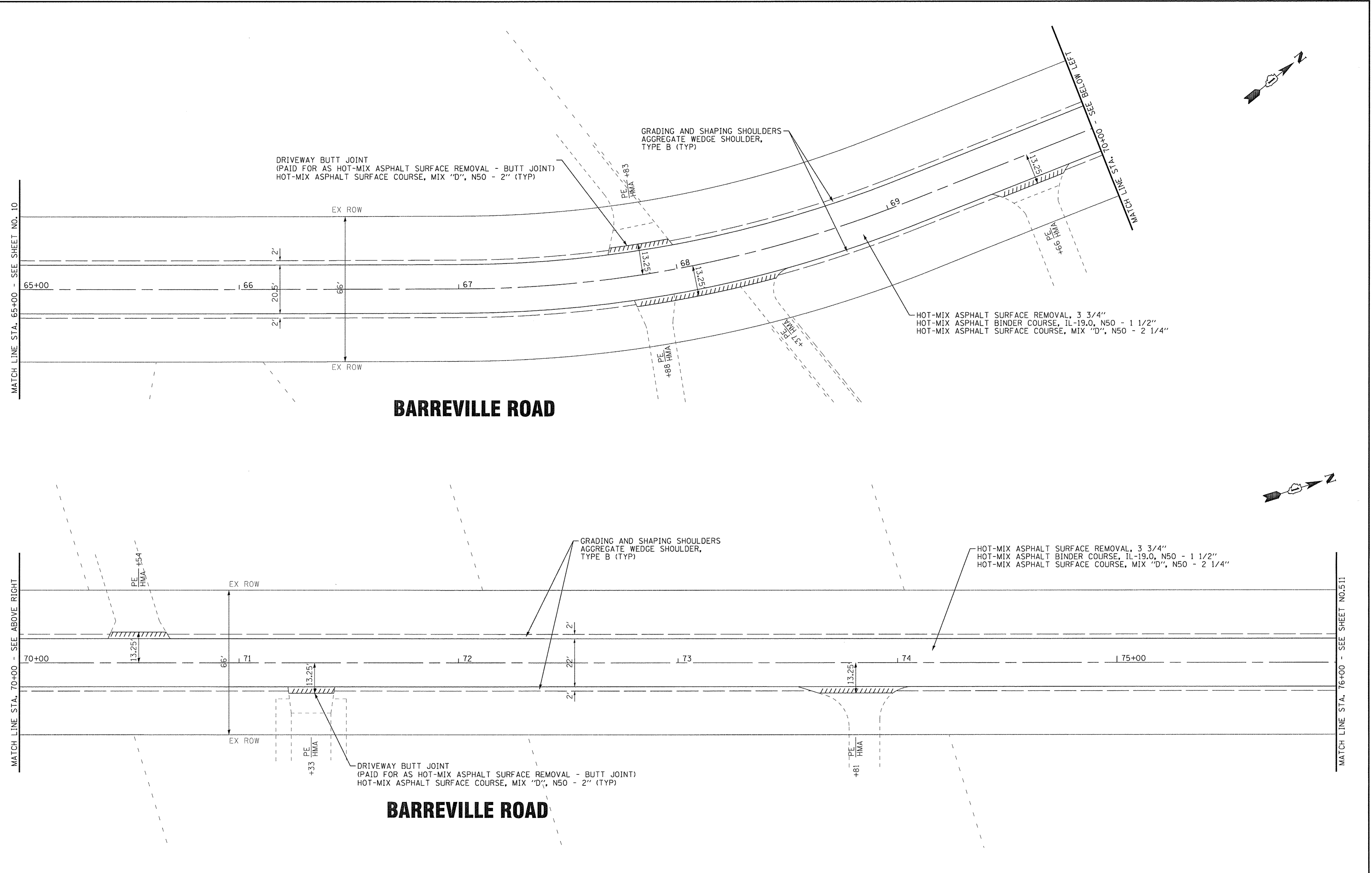
F.A.U. RTE.	SECTION	COUNTY	TOTAL SHEETS	SHEET NO.
0087	14-00010-00-RS	McHENRY	19	9
FED. ROAD DIST. NO. 1 ILLINOIS FED. AID PROJECT: M-4003(895)			CONTRACT NO. 61A73	

COPYRIGHT © 2017 BY BAXTER & WOODMAN, INC.
 STATE OF ILLINOIS - PROFESSIONAL DESIGN FIRM
 LICENSE NO. - 184-00121 - EXPIRES 4/30/2017
 4180JC 3/20/2017 10:29:39 AM
 ...\\dotr\vd\pdf-bw_Default.dwg
 ...\\CADD\Plots\140548_Plan05.dgn
 ...\\cadd\boxwood.com\Projects\Crystal Lake\140548-Barreville PH 1 and 1\CAADD\140548SHT-Plan05.dgn



BAXTER & WOODMAN Consulting Engineers	DESIGNED - JDW	REVISED -	STATE OF ILLINOIS DEPARTMENT OF TRANSPORTATION	ROADWAY PLAN - BARREVILLE ROAD			F.A.U. RTE.	SECTION	COUNTY	TOTAL SHEETS	SHEET NO.
	DRAWN - KAR	REVISED -		0087	14-00010-00-RS	McHENRY	19	10			
	CHECKED - JJF	REVISED -					CONTRACT NO. 61A73				
	DATE - 01-18-17	FILE - 140548SHT-Plan05.dgn		SCALE: 1" = 20'			STA. 54+00	TO STA. 65+00	FED. ROAD DIST. NO. 1	ILLINOIS FED. AID PROJECT: M-4003(895)	

COPYRIGHT © 2017 BY BAXTER & WOODMAN, INC.
 STATE OF ILLINOIS - PROFESSIONAL DESIGN FIRM
 LICENSE NO. - JBA-00121 - EXPIRES 4/30/2017
 4186JC 3/30/2017 10:29:39 AM
 ..\pictor\vdw\bw_Default.dwg
 ..\CADD\Plots\140548_SHT-Plan06.dgn
 ..\corp\boxwood.com\Projects\Crystal Lake\PRAD\140548-Barreville PH 1 and I\CADD\140548SHT-Plan06.dgn



BAXTER & WOODMAN Consulting Engineers	DESIGNED - JDW	REVISED -
	DRAWN - KAR	REVISED -
	CHECKED - JJF	REVISED -
	DATE - 01-18-17	FILE - 140548SHT-Plan06.dgn

STATE OF ILLINOIS
DEPARTMENT OF TRANSPORTATION

ROADWAY PLAN - BARREVILLE ROAD

SCALE: 1" = 20' STA. 65+00 TO STA. 76+00

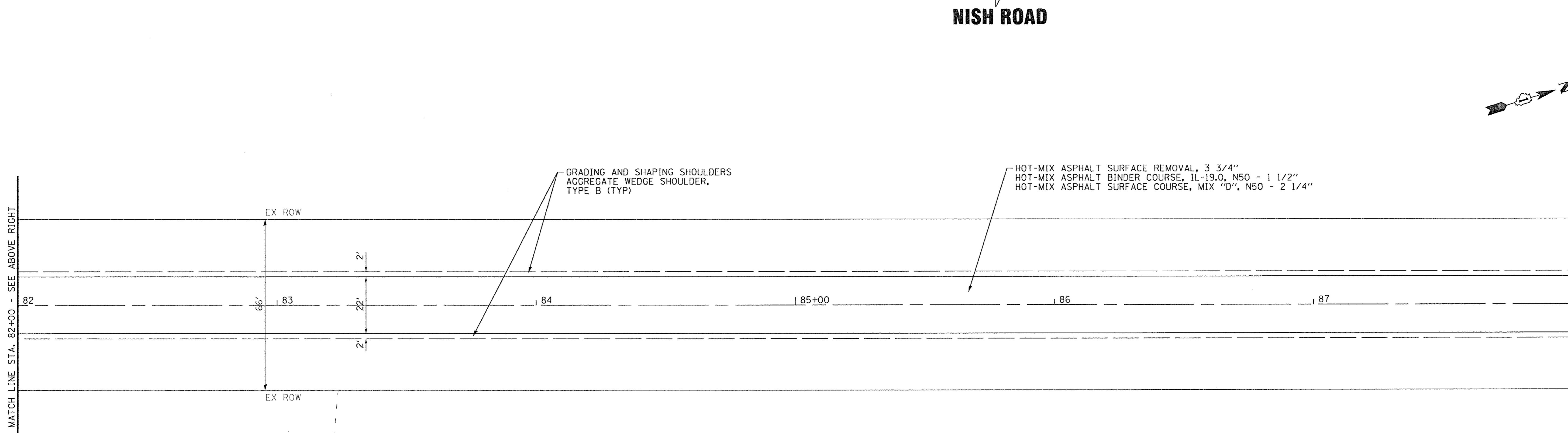
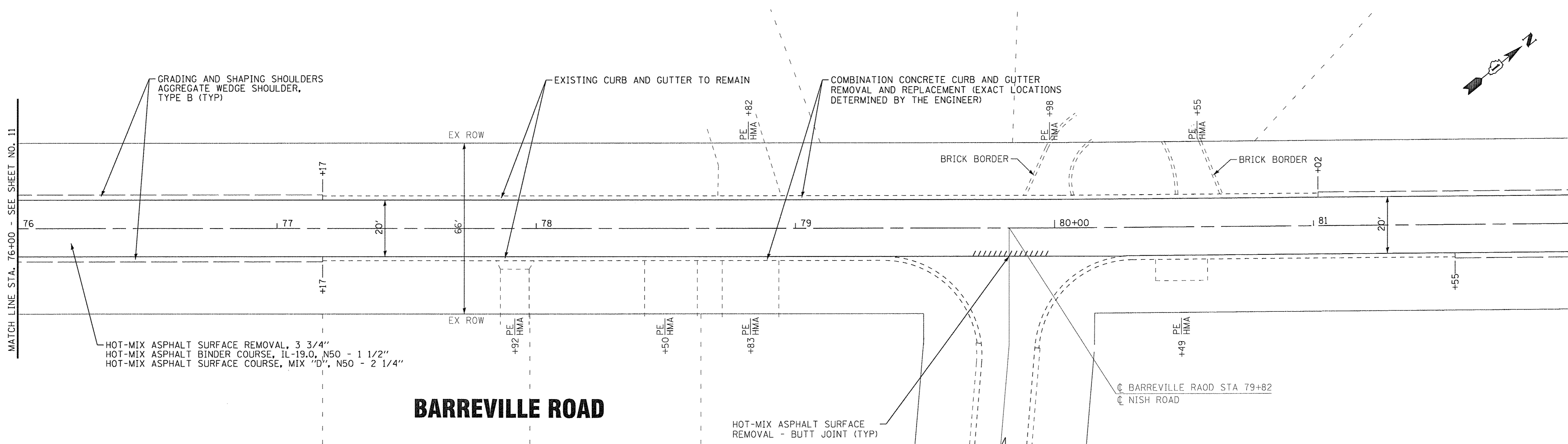
F.A.U. RTE.	SECTION	COUNTY	TOTAL SHEETS	SHEET NO.
0087	14-00010-00-RS	McHENRY	19	11
FED. ROAD DIST. NO. 1 ILLINOIS FED. AID PROJECT: M-4003R8951			CONTRACT NO. 61A73	

MATCH LINE STA. 76+00 - SEE SHEET NO. 11

MATCH LINE STA. 82+00 - SEE ABOVE RIGHT

MATCH LINE STA. 82+00 - SEE BELOW LEFT

MATCH LINE STA. 88+00 - SEE SHEET NO. 513



DESIGNED - JDW	REVISED -
DRAWN - KAR	REVISED -
CHECKED - JJF	REVISED -
DATE - 01-18-17	FILE - 140548SHT-Plan07.dgn

**STATE OF ILLINOIS
DEPARTMENT OF TRANSPORTATION**

ROADWAY PLAN - BARREVILLE ROAD

SCALE: 1" = 20' STA. 76+00 TO STA. 88+00

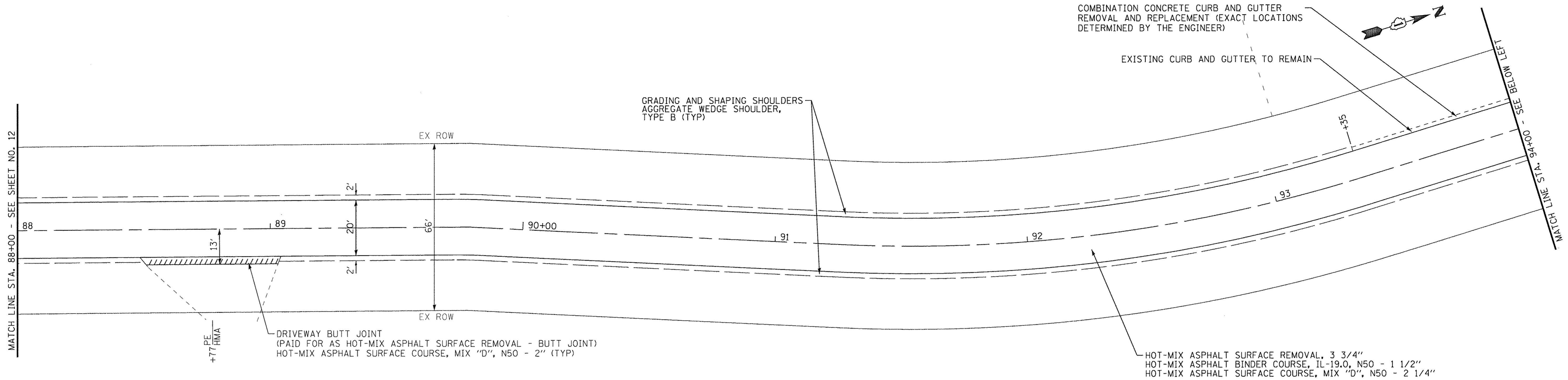
F.A.U. RTE.	SECTION	COUNTY	TOTAL SHEETS	SHEET NO.
0087	14-00010-00-RS	McHENRY	19	12
FED. ROAD DIST. NO. 1 ILLINOIS FED. AID PROJECT: M-4003(895)			CONTRACT NO. 61A73	

COPYRIGHT © 2017 BY BAXTER & WOODMAN, INC.
 STATE OF ILLINOIS - PROFESSIONAL DESIGN FIRM
 LICENSE NO. - J84-00121 - EXPIRES 4/30/2017
 4863JC 3/30/2017 10:29:40 AM
 ...\\p01rdr\vdof-bw-Default.plt
 ...\\CADD\Plots\140548_pen.tbl
 ...\\corpb.boxwood.com\Projects\CrystalLake\PRAGVA\140548-Barreville PH 1 and INCADD\140548SHT-Plan07.dgn

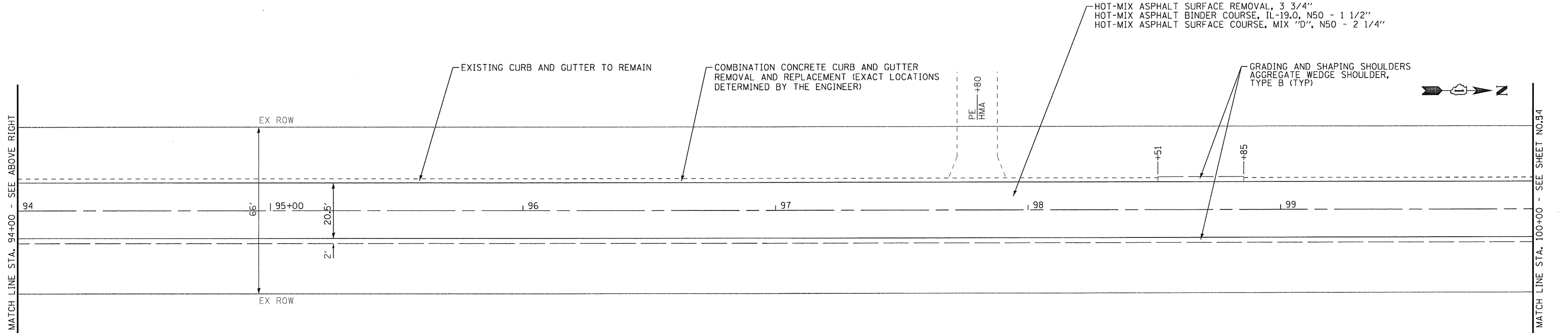
MATCH LINE STA. 88+00 - SEE SHEET NO. 12

MATCH LINE STA. 94+00 - SEE ABOVE RIGHT

MATCH LINE STA. 100+00 - SEE SHEET NO. 34



BARREVILLE ROAD



BARREVILLE ROAD

COPYRIGHT © 2017 BY BAXTER & WOODMAN, INC.
 STATE OF ILLINOIS - PROFESSIONAL DESIGN FIRM
 LICENSE NO. - JBA4-00121 - EXPIRES 4/30/2017
 418cjc 3/30/2017 10:29:41 AM
 \\corp-boxwood.com\Projects\Crystal Lake\PRAGVA\0548-Barreville PH 1 and INCA00\140548SHT-Plan08.dgn

BAXTER & WOODMAN Consulting Engineers	DESIGNED - JDW	REVISED -
	DRAWN - KAR	REVISED -
	CHECKED - JJF	REVISED -
	DATE - 01-18-17	FILE - 140548SHT-Plan08.dgn

**STATE OF ILLINOIS
DEPARTMENT OF TRANSPORTATION**

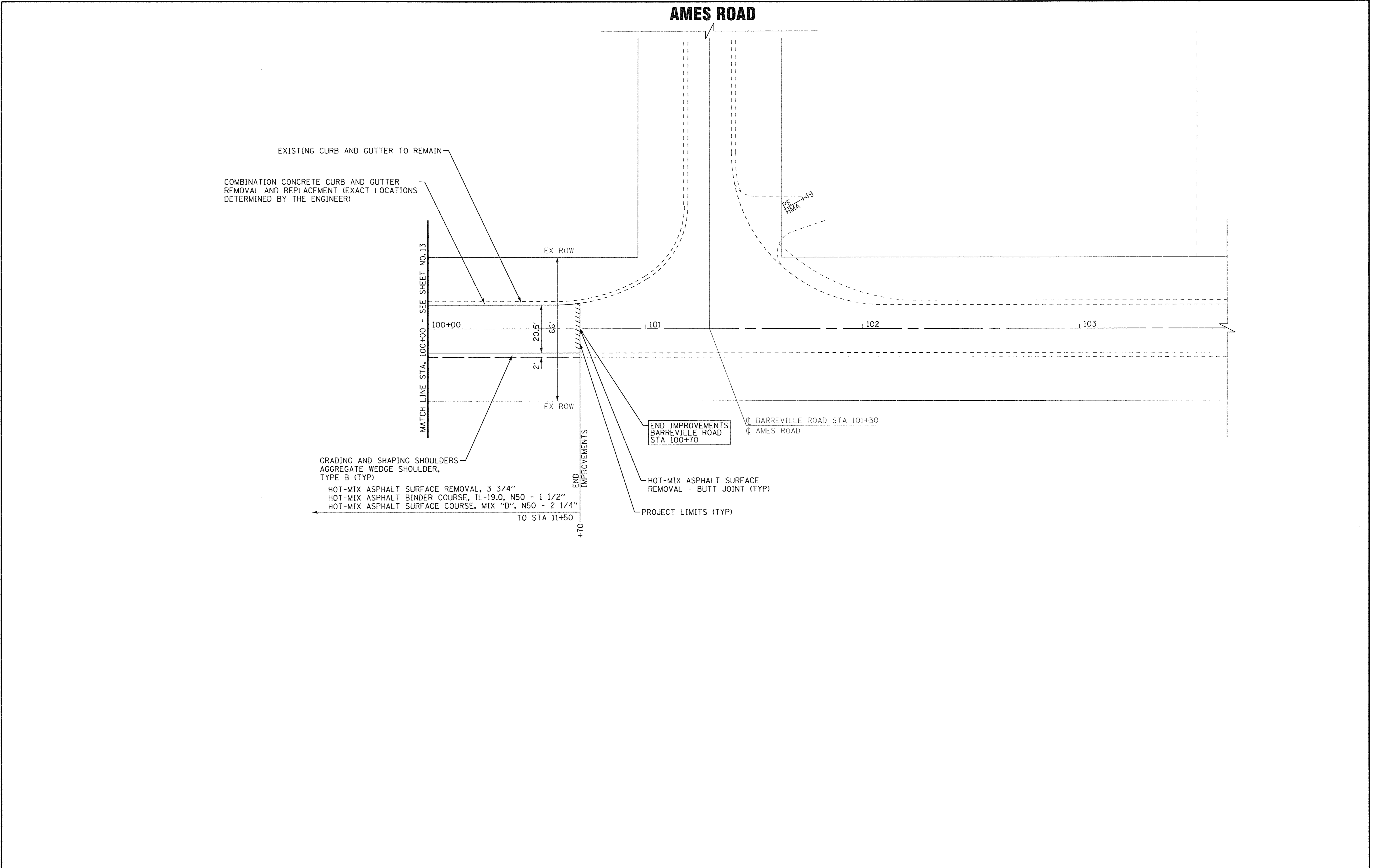
ROADWAY PLAN - BARREVILLE ROAD

SCALE: 1" = 20'

STA. 88+00 TO STA. 100+00

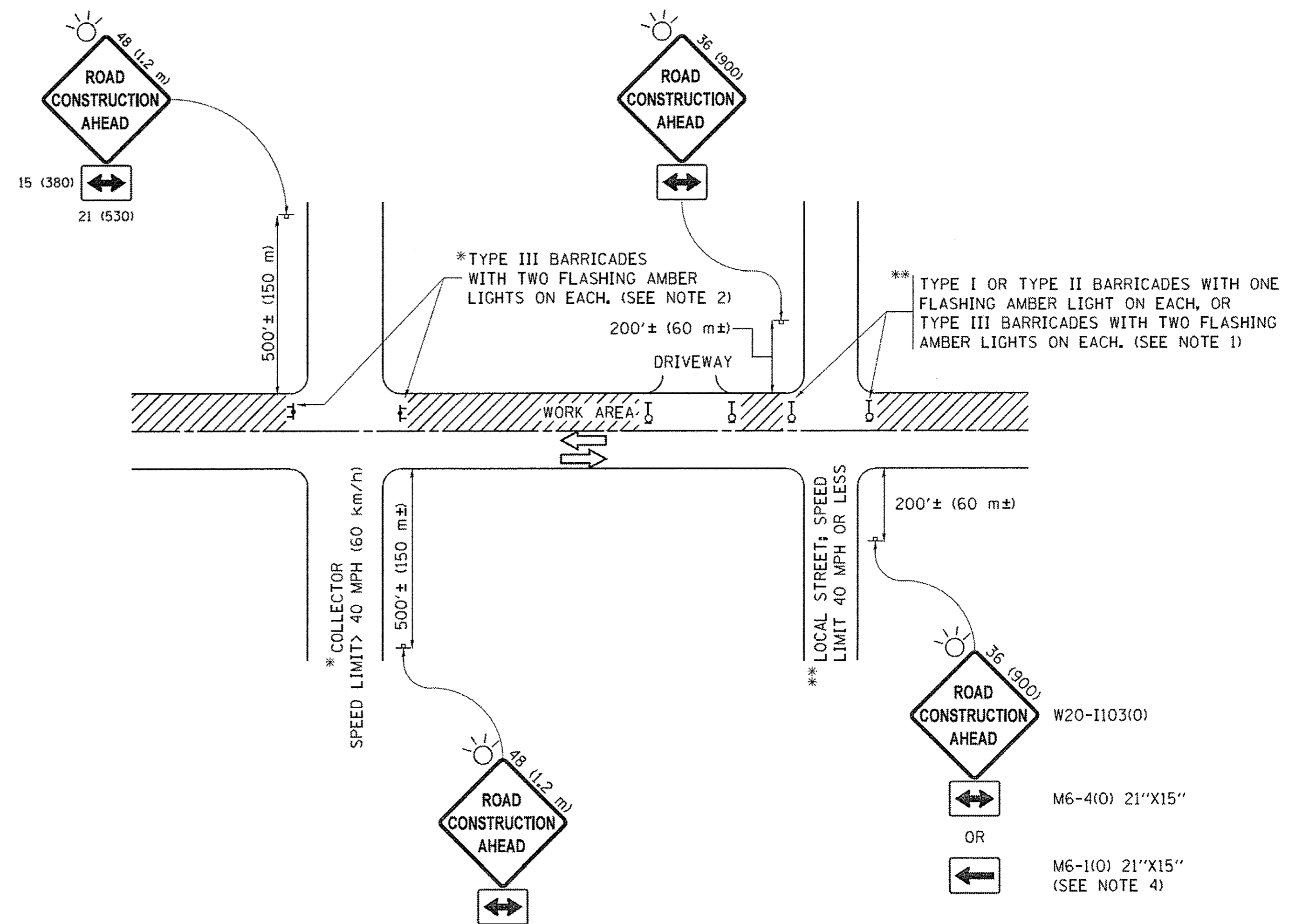
F.A.U. RTE.	SECTION	COUNTY	TOTAL SHEETS	SHEET NO.
0087	14-00010-00-RS	McHENRY	19	13
FED. ROAD DIST. NO. 1 ILLINOIS FED. AID PROJECT: M-4003(8951)			CONTRACT NO. 61A73	

COPYRIGHT © 2017 BY BAXTER & WOODMAN, INC.
 STATE OF ILLINOIS - PROFESSIONAL DESIGN FIRM
 LICENSE NO. - 184-00121 - EXPIRES 4/30/2017
 4/8/2017 3:23/2017 10:29:43 AM
 ...\\lot1dr\vd\df-bw_DeFault.dwg
 ...\\CADD\Plots\140548_Plan.tbl
 ...\\corp.boxwood.com\Projects\Crystal Lake\140548-Barreville PH 1 and 1\140548SHT-Plan09.dgn



	DESIGNED - JDW	REVISED -	STATE OF ILLINOIS DEPARTMENT OF TRANSPORTATION		ROADWAY PLAN - BARREVILLE ROAD		F.A.U. RTE.	SECTION	COUNTY	TOTAL SHEETS	SHEET NO.
	DRAWN - KAR	REVISED -					0087	14-00010-00-RS	McHENRY	19	14
	CHECKED - JJF	REVISED -					CONTRACT NO. 61A73				
	DATE - 01-18-17	FILE - 140548SHT-Plan09.dgn			SCALE: 1" = 20'	STA. 100+00 TO STA. 104+00	FED. ROAD DIST. NO. 1 ILLINOIS FED. AID PROJECT: M-4003(895)				

COPYRIGHT © 2017 BY BAXTER & WOODMAN, INC.
 ALL RIGHTS RESERVED. ILLINOIS LICENSE NO. 189-00121 EXP. 03/30/2017
 PROJECT: \\pcrpbboxwood.com\Projects\CrystalLake\PRAC\140548-Barrerville PH 1.rvt
 FILE: \\pcrpbboxwood.com\Projects\CrystalLake\PRAC\140548-Barrerville PH 1.rvt
 DATE: 03/30/2017 10:29:56 AM



NOTES:

1. SIDE ROAD WITH A SPEED LIMIT OF 40 MPH (60 km/h) OR LESS AS SHOWN ON THE DRAWING AND AS DIRECTED BY THE ENGINEER:
 - a) ONE "ROAD CONSTRUCTION AHEAD" SIGN 36 x 36 (900x900) WITH A FLASHER MOUNTED ON IT APPROXIMATELY 200' (60 m) IN ADVANCE OF THE MAIN ROUTE.
 - b) THE CLOSED PORTION OF THE MAIN ROUTE SHALL BE PROTECTED BY BLOCKING WITH TYPE I, TYPE II OR TYPE III BARRICADES, 1/3 OF THE CROSS SECTION OF THE CLOSED PORTION.
2. SIDE ROAD WITH A SPEED LIMIT GREATER THAN 40 MPH (60 km/h) AS SHOWN ON THE DRAWING AND AS DIRECTED BY THE ENGINEER:
 - a) ONE "ROAD CONSTRUCTION AHEAD" SIGN 48 x 48 (1.2 m x 1.2 m) WITH A FLASHER MOUNTED ON IT APPROXIMATELY 500' (150 m) IN ADVANCE OF THE MAIN ROUTE.
 - b) THE CLOSED PORTION OF THE MAIN ROUTE SHALL BE PROTECTED BY BLOCKING WITH TYPE III BARRICADES, 1/2 OF THE CROSS SECTION OF THE CLOSED PORTION.
3. CONES MAY BE SUBSTITUTED FOR BARRICADES OR DRUMS AT HALF THE SPACING DURING DAY OPERATIONS. CONES SHALL BE A MINIMUM OF 28 (710) IN HEIGHT.
4. WHEN THE SIDE ROAD LIES BETWEEN THE BEGINNING OF THE MAINLINE SIGNING AND THE WORK ZONE, A SINGLE HEADED ARROW (M6-1) SHALL BE USED IN LIEU OF THE DOUBLE HEADED ARROW (M6-4).
5. WHEN WORK IS BEING PERFORMED ON A SIDE ROAD OR DRIVEWAY, FOLLOW THE APPLICABLE STANDARD(S). THE DIRECTIONAL ARROW (M6-1 OR M6-4) SHALL BE COVERED OR REMOVED WHEN NO LONGER CONSISTENT WITH THE TRAFFIC CONTROL SET-UP.
6. ADVANCE WARNING SIGNS ARE TO BE OMITTED ON DRIVEWAYS UNLESS OTHERWISE SPECIFIED IN THE PLANS OR BY THE ENGINEER.
7. THE TRAFFIC CONTROL AND PROTECTION FOR SIDE ROADS, INTERSECTIONS, AND DRIVEWAYS SHALL BE INCLUDED IN THE COST OF SPECIFIED TRAFFIC CONTROL STANDARDS OR ITEMS.

All dimensions are in inches (millimeters) unless otherwise shown.

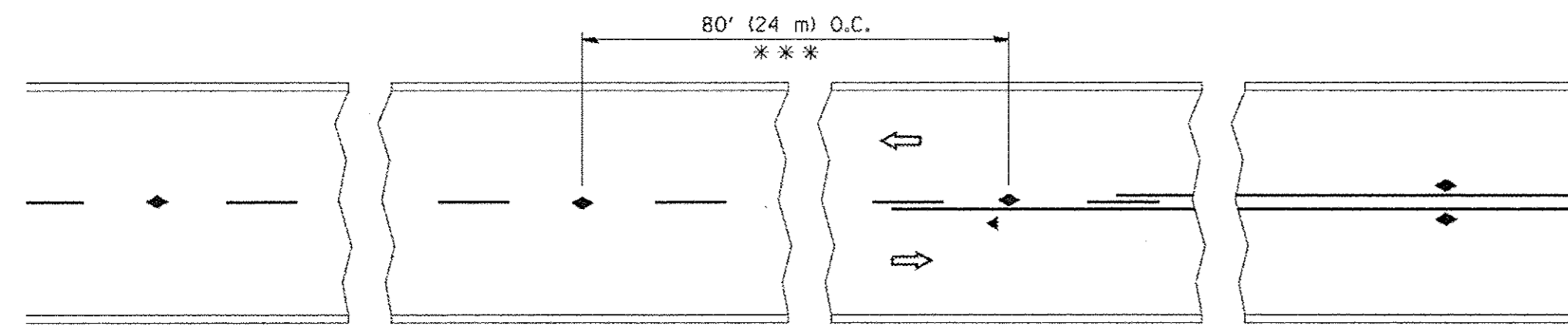
FILE NAME =	USER NAME = foatomj	DESIGNED - L.H.A.	REVISED - A. HOUSE 10-15-96
\\pcrpbboxwood.com\Projects\CrystalLake\PRAC\140548-Barrerville PH 1.rvt	\\pcrpbboxwood.com\Projects\CrystalLake\PRAC\140548-Barrerville PH 1.rvt	\\pcrpbboxwood.com\Projects\CrystalLake\PRAC\140548-Barrerville PH 1.rvt	\\pcrpbboxwood.com\Projects\CrystalLake\PRAC\140548-Barrerville PH 1.rvt
PLOT SCALE = 50,000 / 1"	CHECKED -	REVISIONS	REVISIONS
PLOT DATE = 9/15/2016	DATE - 06-89	REVISIONS	REVISIONS

**STATE OF ILLINOIS
DEPARTMENT OF TRANSPORTATION**

**TRAFFIC CONTROL AND PROTECTION FOR
SIDE ROADS, INTERSECTIONS, AND DRIVEWAYS**

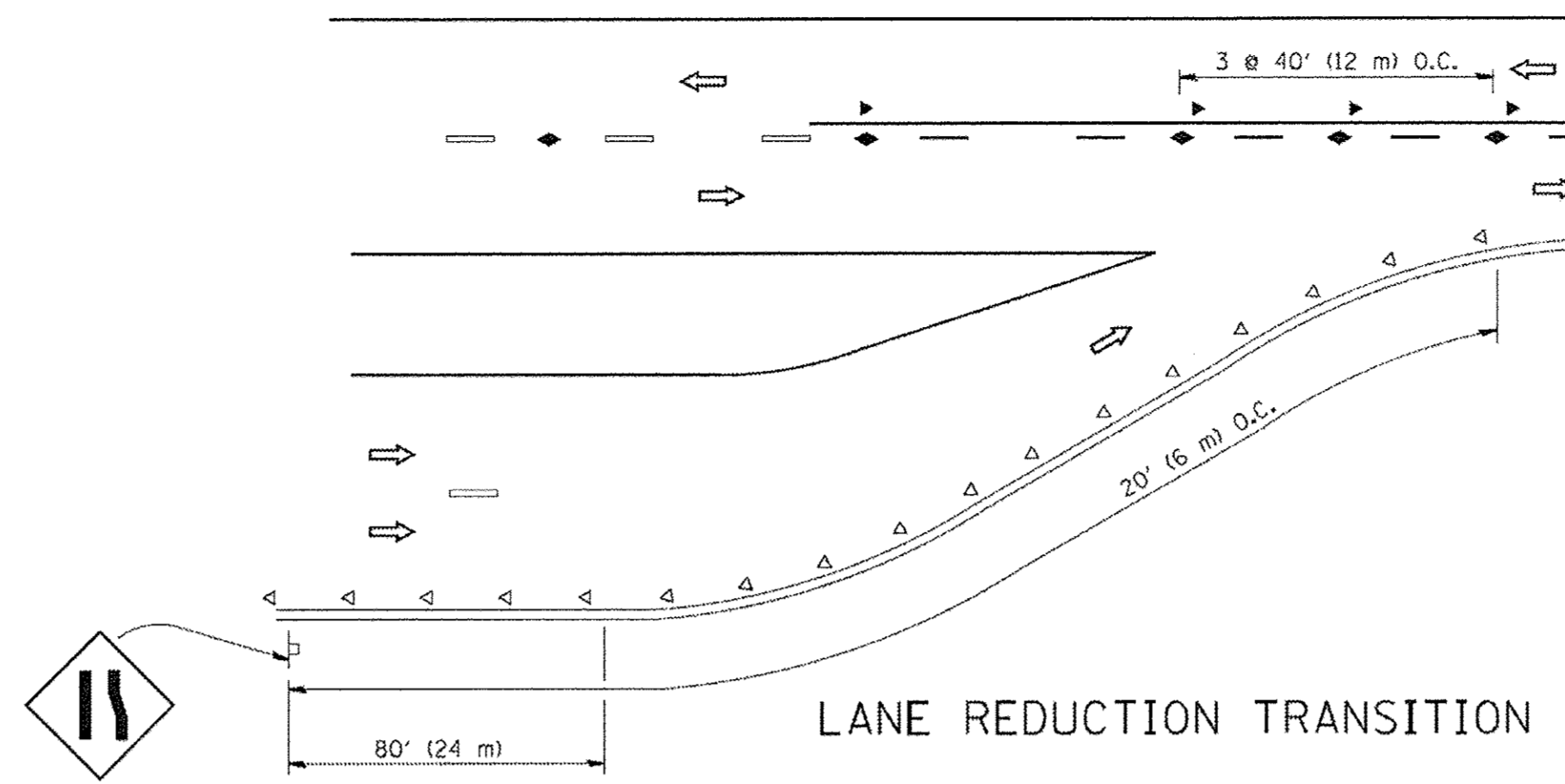
SCALE: NONE SHEET 1 OF 1 SHEETS STA. TO STA.

F.A.U. RTE.	SECTION	COUNTY	TOTAL SHEETS	SHEET NO.
0087	14-00010-00-RS	McHENRY	19	16
TC-10			CONTRACT NO.	
ILLINOIS FED. AID PROJECT				

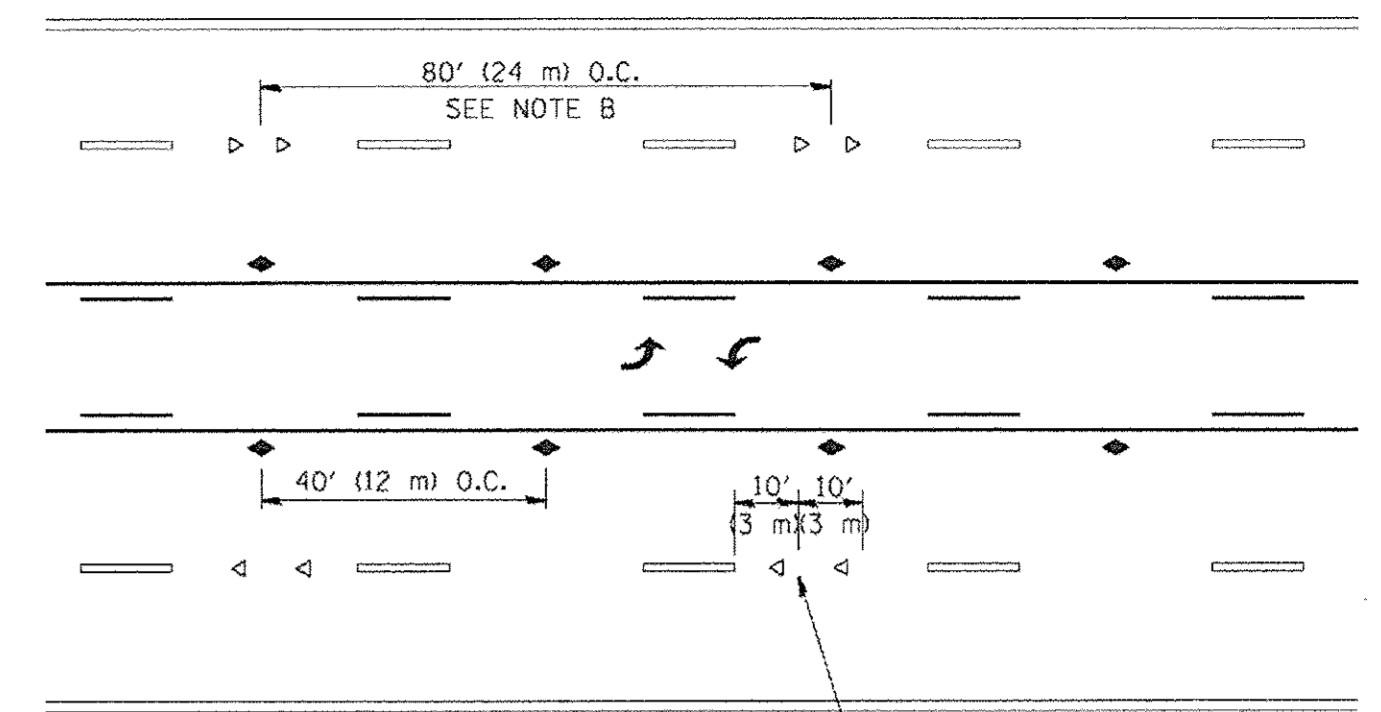


*** REDUCE TO 40' (12 m) O.C. ON CURVES WITH POSTED OR ADVISORY SPEED 45 M.P.H. (70 km/h) OR LESS.

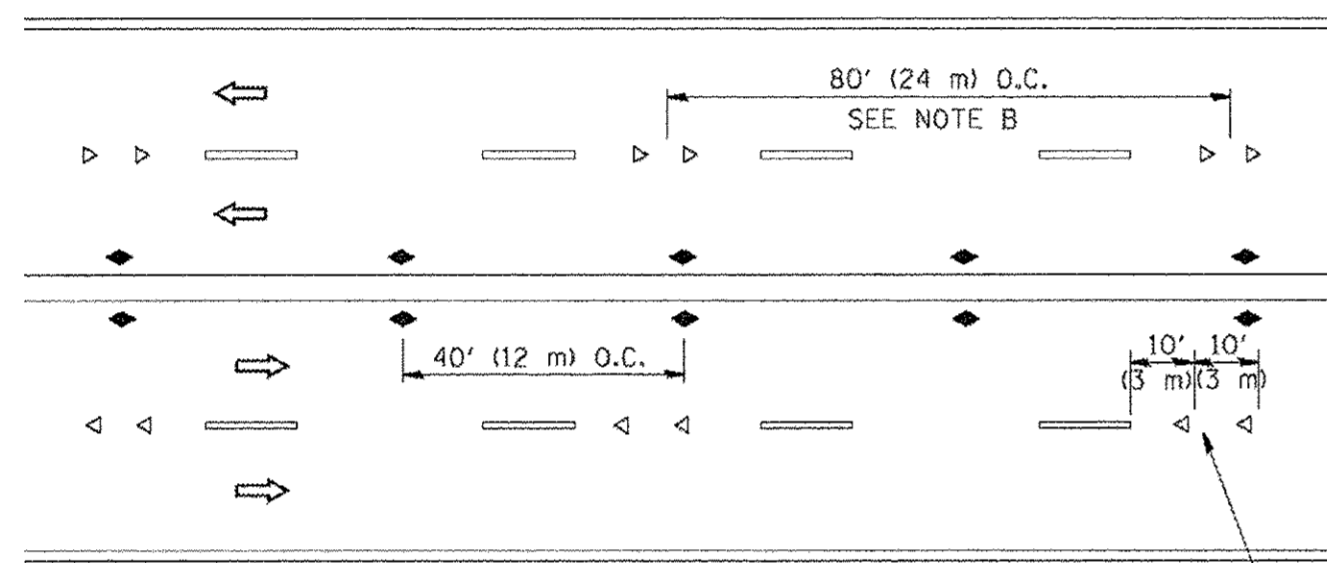
TWO-LANE/TWO-WAY



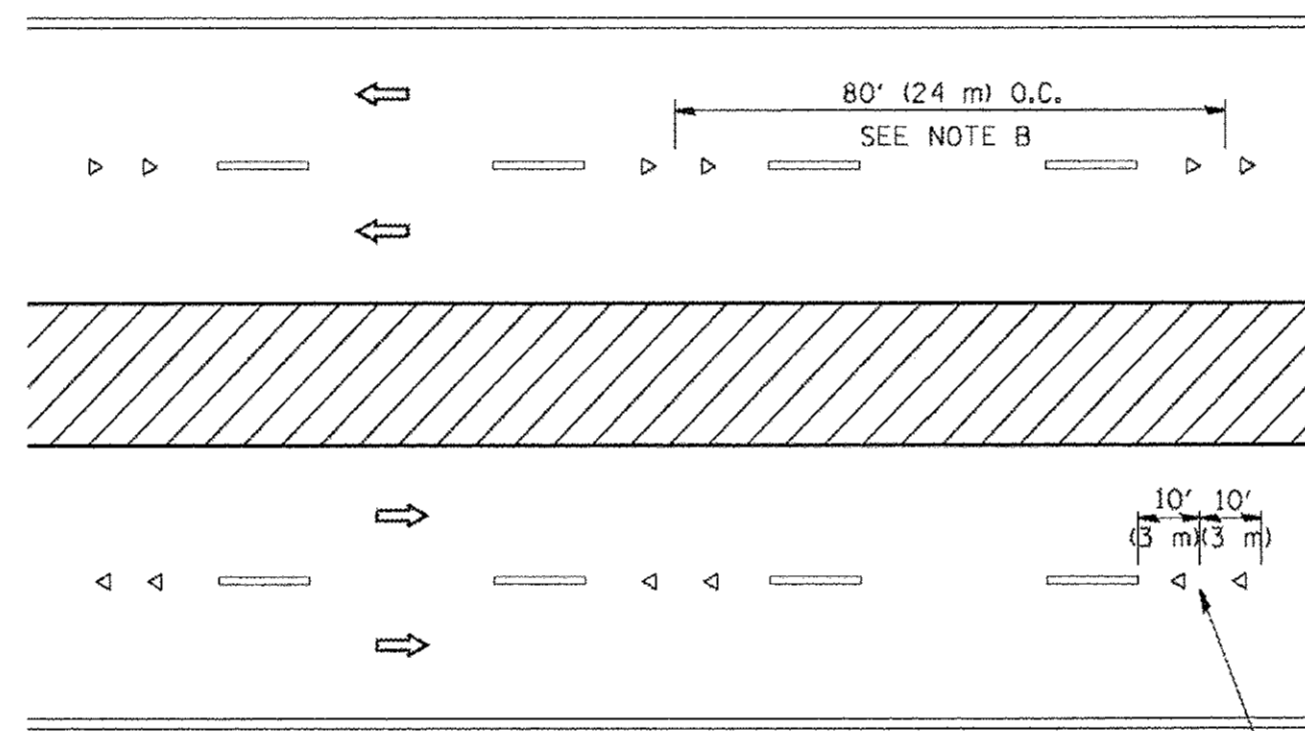
LANE REDUCTION TRANSITION



TWO-WAY LEFT TURN



MULTI-LANE/UNDIVIDED



MULTI-LANE/DIVIDED

GENERAL NOTES

1. MARKERS USED WITH DASHED LINES SHALL BE CENTERED IN THE GAP BETWEEN SEGMENTS.
2. MARKERS USED ADJACENT TO SOLID LINES SHALL BE OFFSET 2 TO 3 (50 TO 75) TOWARD TRAFFIC AS SHOWN.
3. MARKERS THROUGH TANGENTS LESS THAN 500' (150 m) IN LENGTH BETWEEN CURVES SHALL BE INSTALLED AT THE LESSER OF THE TWO CURVE SPACINGS.

SYMBOLS

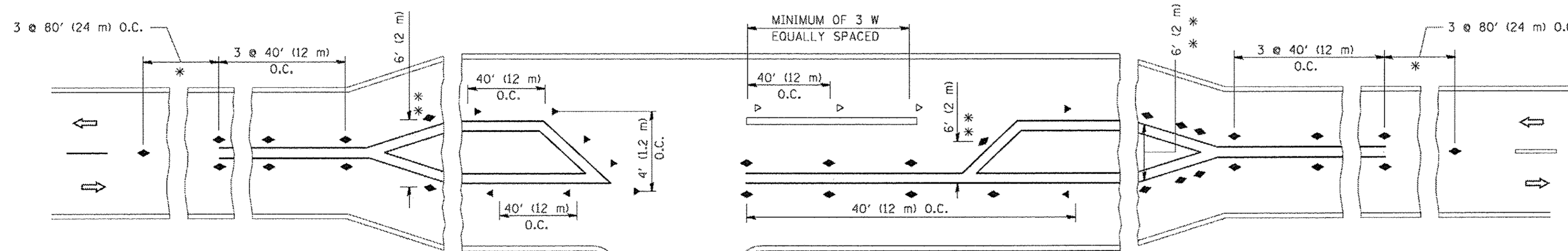
- YELLOW STRIPE
- WHITE STRIPE
- ◀ ONE-WAY AMBER MARKER
- ◁ ONE-WAY CRYSTAL MARKER (W/O)
- ◆ TWO-WAY AMBER MARKER

LANE MARKER NOTES

- A. USE DOUBLE LANE LINE MARKERS SPACED AS SHOWN.
- B. REDUCE TO 40' (12 m) O.C. ON CURVES WHERE ADVISORY SPEEDS ARE 10 M.P.H. (20 km/h) LOWER THAN POSTED SPEEDS.

DESIGN NOTES

1. DOUBLE LANE LINE MARKERS SHALL BE USED UNLESS SPECIFIED OTHERWISE.
2. EXCEPT AS SHOWN ON THE LANE REDUCTION TRANSITION AND FREEWAY EXIT RAMP DETAIL, MARKERS ARE NOT TO BE SPECIFIED ON RIGHT EDGE LINES.
3. THE EXACT MARKER LIMITS, SPACING, AND COLOR SHALL BE INCLUDED IN THE PLANS WHEN STANDARD SPECIFICATIONS ARE NOT BEING USED.
4. MARKERS SHOULD NOT BE USED ALONGSIDE CURBS EXCEPT FOR EXTREMELY SHORT SECTIONS OF CURBS WHERE NOT MORE THAN TWO MARKERS WOULD BE INVOLVED.



* SEE TWO-LANE/TWO-WAY WHERE MARKERS CONTINUE
 ** WHERE THE MEDIAN WIDTH IS 6' (2 m) OR LESS USE TWO-WAY MARKERS.

LEFT TURN

All dimensions are in inches (millimeters) unless otherwise shown.

COPYRIGHT © 2017 BY BAXTER & WOODMAN, INC. PROJECT: 14-00010-00-RS SECTION: 19 SHEET NO. 17
 FILE NAME: \\c:\pwworking\woodman\14-00010-00-RS\14-00010-00-RS-19-17.dwg
 PLOT DATE: 3/2/2011 10:30:07 AM

FILE NAME =	USER NAME = jeyso	DESIGNED -	REVISED - T. RAMMACHER 09-19-94
as:\pwworking\woodman\14-00010-00-RS\14-00010-00-RS-19-17.dwg		DRAWN -	REVISED - T. RAMMACHER 03-12-99
	PLOT SCALE = 50.000' / IN.	CHECKED -	REVISED - T. RAMMACHER 01-06-00
	PLOT DATE = 3/2/2011	DATE -	REVISED - C. JUCIUS 09-09-09

STATE OF ILLINOIS
 DEPARTMENT OF TRANSPORTATION

TYPICAL APPLICATIONS				
RAISED REFLECTIVE PAVEMENT MARKERS (SNOW-PLOW RESISTANT)				
F.A.U. RTE.	SECTION	COUNTY	TOTAL SHEETS	SHEET NO.
0087	14-00010-00-RS	McHENRY	19	17
TC-11			CONTRACT NO.	
FED. ROAD DIST. NO. 1 ILLINOIS FED. AID PROJECT				
SCALE: NONE	SHEET NO. 1 OF 1 SHEETS	STA. TO STA.		

