

STATE OF ILLINOIS  
DEPARTMENT OF TRANSPORTATION

F.A.P. RTE. 840	SECTION (141)RS-5	COUNTY KANKAKEE	TOTAL SHEETS 13	SHEET NO. 1
ILLINOIS			CONTRACT NO. 66A98	

**INDEX OF SHEETS**

1	COVER SHEET
2	GENERAL NOTES
3-5	SUMMARY OF QUANTITIES
6	TYPICAL SECTIONS
7-8	SCHEDULES
9	LAYOUT MAP
10-13	DETAILS

# PROPOSED HIGHWAY PLANS

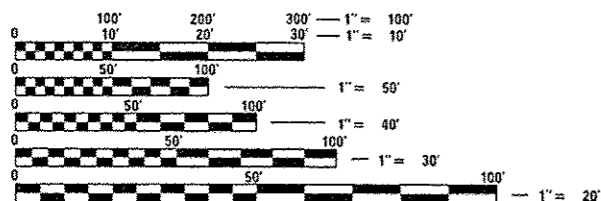
FAP ROUTE 840 (IL 50)  
SECTION (141)RS-5  
PROJECT STP-HSIP-0840 (073)  
3P MILLING & RESURFACING  
KANKAKEE COUNTY

C-93-055-11

WILL COUNTY LINE TO NORTH OF 6TH ST IN MANTENO

**LIST OF ILLINOIS DOT HIGHWAY STANDARDS**

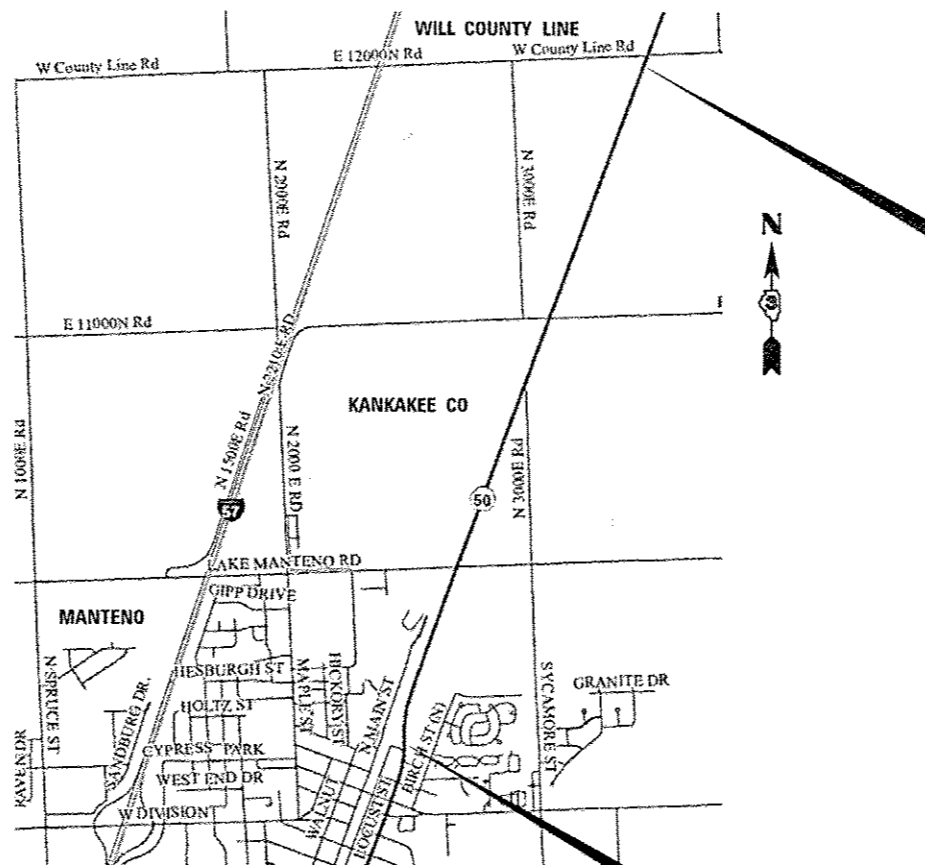
000001-06	STANDARD SYMBOLS, ABBREVIATIONS AND PATTERNS
001006	DECIMAL OF AN INCH AND OF A FOOT
642006	SHOULDER RUMBLE STRIPS, 8 INCH
701101-05	OFF-ROAD OPERATIONS, MULTILANE, 15' (4.5 m) TO 24' (600 mm) FROM PAVEMENT EDGE
701106-02	OFF-ROAD OPERATIONS, MULTILANE, MORE THAN 15' (4.5 m) AWAY
701421-08	LANE CLOSURE, MULTILANE, DAY OPERATIONS ONLY, FOR SPEEDS ≥ 45 MPH TO 55 MPH
701426-09	LANE CLOSURE, MULTILANE INTERMITTENT OR MOVING OPERATION, FOR SPEEDS ≥ 45 MPH
701901-06	TRAFFIC CONTROL DEVICES
780001-05	TYPICAL PAVEMENT MARKINGS
781001-04	TYPICAL APPLICATIONS RAISED REFLECTIVE PAVEMENT MARKERS
782001-01	PRISMATIC CURB REFLECTORS



FULL SIZE PLANS HAVE BEEN PREPARED USING STANDARD ENGINEERING SCALES. REDUCED SIZED PLANS WILL NOT CONFORM TO STANDARD SCALES. IN MAKING MEASUREMENTS ON REDUCED PLANS, THE ABOVE SCALES MAY BE USED.

J.U.L.I.E.  
JOINT UTILITY LOCATION INFORMATION FOR EXCAVATION  
1-800-892-0123  
OR 811

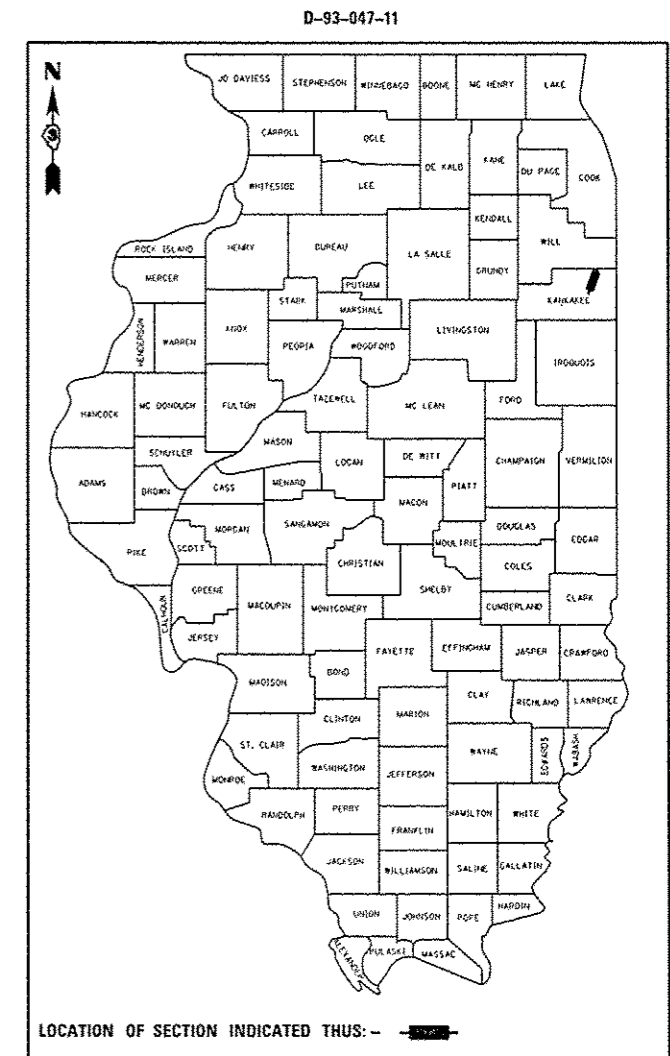
PROJECT ENGINEER: JOE KANNEL, P.E.  
UNIT CHIEF: MICHELE LINDEMANN, P.E.  
DISTRICT 3 NO. (815) 434-6131  
CONTRACT NO. 66A98



BEGIN IMPROVEMENT  
STA. 643 + 42

END IMPROVEMENT  
STA. 484 + 50

GROSS LENGTH = NET LENGTH = 15,892 FT. = 3.009 MI.



LOCATION OF SECTION INDICATED THUS: - [Symbol] -

FUNCTIONAL CLASS  
RURAL MINOR ARTERIAL  
URBAN OTHER PRINCIPAL ARTERIAL  
2015 ADT = 7950  
P.V. = 89.3% S.U. = 5.0% M.U. = 5.7%

STATE OF ILLINOIS  
DEPARTMENT OF TRANSPORTATION

SUBMITTED 03/17 20 17  
Karin Kanel  
REGIONAL ENGINEER

May 12 20 17  
Maureen M. Addis PE  
ENGINEER OF DESIGN AND ENVIRONMENT

May 12 20 17  
Paula  
DIRECTOR OF PROGRAM DEVELOPMENT

PRINTED BY THE AUTHORITY  
OF THE STATE OF ILLINOIS

**GENERAL NOTES**

**COMMITMENTS**

THE THICKNESS OF HMA SHOWN ON THE PLANS IS THE NOMINAL THICKNESS. DEVIATIONS FROM THE NOMINAL THICKNESS WILL BE PERMITTED WHEN SUCH DEVIATIONS OCCUR DUE TO IRREGULARITIES IN THE EXISTING SURFACE OR BASE ON WHICH THE HMA IS PLACED.

THE HMA SURFACE OF ALL MAILBOX TURNOUTS, PRIVATE ENTRANCES, COMMERCIAL ENTRANCES, AND SIDE ROADS SHALL BE MADE NEATLY, IN A WORKMANLIKE MANNER, AND SHALL ACCURATELY CONFORM TO THE SHAPES AND DIMENSIONS SHOWN ON THE PLAN DETAILS. IF REQUIRED BY THE ENGINEER, THE CONTRACTOR SHALL SAW CUT THE HMA SURFACE TO CONFORM TO THE SHAPES AND DIMENSIONS SHOWN ON THE PLAN DETAILS. THIS WORK WILL BE INCLUDED IN THE COST OF THE HMA SURFACE.

THE ENGINEER WILL BE THE SOLE JUDGE CONCERNING CURING TIME FOR THE VARIOUS HMA LIFTS.

ON EXISTING PAVEMENT WHICH MAY BE SUPERELEVATED, THE NEW HMA PAVEMENT SHALL BE BUILT WITH THE SAME SUPERELEVATION UNLESS NEW SUPERELEVATION RATES ARE GIVEN ON THE PLANS.

ANY REFERENCE TO A STANDARD IN THESE PLANS SHALL BE INTERPRETED TO MEAN THE EDITION AS INDICATED BY THE SUBNUMBER SHOWN IN THE LIST OF STANDARDS OR THE COPY INCLUDED IN THESE PLANS.

THE FOLLOWING RATES OF APPLICATION HAVE BEEN USED IN CALCULATING PLAN QUANTITIES:

GRANULAR MATERIALS	2.05	TONS / CU YD
HMA RESURFACING	112	LBS / SQ YD / IN
SHORT TERM PAVEMENT MARKING	10	FT / 100 FT OF APPLICATION
MIX FOR CRACKS, JTS & FLGWYS	0.0003	TONS / SQ YD
LEVEL BINDER (HAND METHOD)	0.0005	TONS / SQ YD

LOCATION(S):	ENTIRE PROJECT	ENTIRE PROJECT	ENTIRE PROJECT	ENTIRE PROJECT	ENTIRE PROJECT
MIXTURE USE(S):	HMA SURFACE	HMA LEVEL BINDER	HMA SHOULDER BOTTOM LIFT(S)	HMA SHOULDER TOP LIFT	INCIDENTAL HMA
BINDER GRADE (PG):	PG 64-22	PG 64-22	PG 64-22	PG 64-22	PG 64-22
DESIGN AIR VOIDS:	4.0% @ N70	4.0% @ N70	4.0% @ N50	4.0% @ N50	4.0% @ N50
MIXTURE COMPOSITION: (MIXTURE GRADATION)	IL 9.5	IL 9.5FG	IL 19.0	IL 9.5	IL 9.5
FRICTION AGGREGATE:	MIXTURE D			MIXTURE C	MIXTURE C
MIXTURE WEIGHT:	112.0 LB/SY/IN	112.0 LB/SY/IN	112.0 LB/SY/IN	112.0 LB/SY/IN	112.0 LB/SY/IN
QUALITY MANAGEMENT PROGRAM:	OCP	OCP	OCP	OCP	OCP
SUBLOT SIZE:	1000 TONS	1000 TONS	NA	NA	NA
DENSITY TEST METHOD:	CORES	GROWTH CURVE	CORES	GROWTH CURVE	SATISFACTION OF ENGINEER

STATE OF ILLINOIS  
DEPARTMENT OF TRANSPORTATION  
DISTRICT THREE  
AS BUILT INFORMATION

\_\_\_\_\_  
SUPERVISING CONSTRUCTION FIELD ENGINEER

\_\_\_\_\_  
RESIDENT ENGINEER / TECHNICIAN

START & END DATES  
OF CONSTRUCTION:

INSPECTORS:

PREPARED BY: W. Baird  
DISTRICT STUDIES & PLANS ENGINEER

DATE: 3-20-17

EXAMINED BY: J. P. Wolf  
DISTRICT CONSTRUCTION ENGINEER

Michael Ashby  
DISTRICT MATERIALS ENGINEER

Tom Hayes  
DISTRICT OPERATIONS ENGINEER

STATE OF ILLINOIS  
DEPARTMENT OF TRANSPORTATION

GENERAL NOTES

FILE NAME: c:\pw_work\p1\dat\corcoranm\0250177\066498-shi-cover.dgn	USER NAME: corcoranm	DESIGNED: -	REVISED: -	STATE OF ILLINOIS DEPARTMENT OF TRANSPORTATION	GENERAL NOTES	F.A.P. RTE.:	SECTION:	COUNTY:	TOTAL SHEETS:	SHEET NO.:	
#MODELNAME:	PLOT SCALE: 1/80,000 = 1" = 100'	DRAWN: -	REVISED: -			840	(14)RS-5	KANKAKEE	13	2	
	PLOT DATE: 3/16/2017	CHECKED: -	REVISED: -			SCALE:	SHEET OF SHEETS:	STA. TO STA.	ILLINOIS FED. AID PROJECT		
		DATE: -	REVISED: -								

CODE NO.	ITEM	UNIT	TOTAL QUANTITY	CONSTRUCTION CODE			
				80% FEDERAL 20% STATE ROADWAY	80% FEDERAL 20% STATE ROADWAY	90% FEDERAL 10% STATE ROADWAY	90% FEDERAL 10% STATE ROADWAY
				0005 URBAN	0005 URBAN	0021 URBAN	0021 RURAL
20200600	EXCAVATING AND GRADING EXISTING SHOULDER	UNIT	312			81	231
40600290	BITUMINOUS MATERIALS (TACK COAT)	POUND	60503	18721	41782		
40600400	MIXTURE FOR CRACKS, JOINTS, AND FLANGEWAYS	TON	24	6	18		
40600535	LEVELING BINDER (HAND METHOD), N70	TON	41	11	30		
40600637	LEVELING BINDER (MACHINE METHOD), 1L-9.5FG.N70	TON	3428	885	2543		
40600990	TEMPORARY RAMP	SQ YD	1130	536	594		
40603340	HOT-MIX ASPHALT SURFACE COURSE, MIX "D", N70	TON	7086	1830	5256		
40800050	INCIDENTAL HOT-MIX ASPHALT SURFACING	TON	895	810	85		
44000155	HOT-MIX ASPHALT SURFACE REMOVAL, 1 1/2"	SQ YD	10647	9637	1010		
44000158	HOT-MIX ASPHALT SURFACE REMOVAL, 2 1/4"	SQ YD	81627	21072	60555		
48203029	HOT-MIX ASPHALT SHOULDERS, 8"	SQ YD	13870			3585	10285
64200108	SHOULDER RUMBLE STRIPS, 8 INCH	FOOT	31207			8066	23141
△ 66900200	NON-SPECIAL WASTE DISPOSAL	CU YD	35	35			
△ 66900450	SPECIAL WASTE PLANS AND REPORTS	LSUM	1	0.25	0.75		

△ SPECIALTY ITEMS

FILE NAME =	USER NAME = cncorran1m	DESIGNED -	REVISED -	STATE OF ILLINOIS DEPARTMENT OF TRANSPORTATION	SUMMARY OF QUANTITIES				F.A.P. RTE.	SECTION	COUNTY	TOTAL SHEETS	SHEET NO.
...	...	CHECKED -	REVISED -						840	(14)RS-5	KANKAKEE	14	3
...	...	DATE -	REVISED -		SCALE: SHEET OF SHEETS STA. TO STA.				CONTRACT NO. 66A98				
...	...	...	...						ILLINOIS FED. AID PROJECT				

REV

CODE NO.	ITEM	UNIT	TOTAL QUANTITY	CONSTRUCTION CODE			
				80% FEDERAL ROADWAY	80% FEDERAL ROADWAY	90% FEDERAL ROADWAY	90% FEDERAL ROADWAY
				0005	0005	0021	0021
				URBAN	URBAN	URBAN	RURAL
Δ 66900530	SOIL DISPOSAL ANALYSIS	EACH	1	0.25	0.75		
67000400	ENGINEER'S FIELD OFFICE, TYPE A	CAL MO	2	0.5	1.5		
67100100	MOBILIZATION	LSUM	1	0.25	0.75		
70100310	TRAFFIC CONTROL AND PROTECTION, STANDARD 701421	LSUM	1	0.25	0.75		
70300100	SHORT TERM PAVEMENT MARKING	FOOT	7872	2082	5790		
70300150	SHORT TERM PAVEMENT MARKING REMOVAL	SO FT	2624	694	1930		
70300210	TEMPORARY PAVEMENT MARKING LETTERS AND SYMBOLS	SO FT	78	31	47		
70300220	TEMPORARY PAVEMENT MARKING - LINE 4"	FOOT	130732	34536	96196		
70300240	TEMPORARY PAVEMENT MARKING - LINE 6"	FOOT	7948	2044	5904		
70300250	TEMPORARY PAVEMENT MARKING - LINE 8"	FOOT	807	205	602		
70300260	TEMPORARY PAVEMENT MARKING - LINE 12"	FOOT	500	140	360		
70300280	TEMPORARY PAVEMENT MARKING - LINE 24"	FOOT	48	26	22		
Δ 78003130	PREFORMED PLASTIC PAVEMENT MARKING, TYPE B - LINE 6"	FOOT	7948	2044	5904		
Δ 78008200	POLYUREA PAVEMENT MARKING TYPE I - LETTERS AND SYMBOLS	SO FT	78	31	47		

Δ SPECIALTY ITEMS

REV

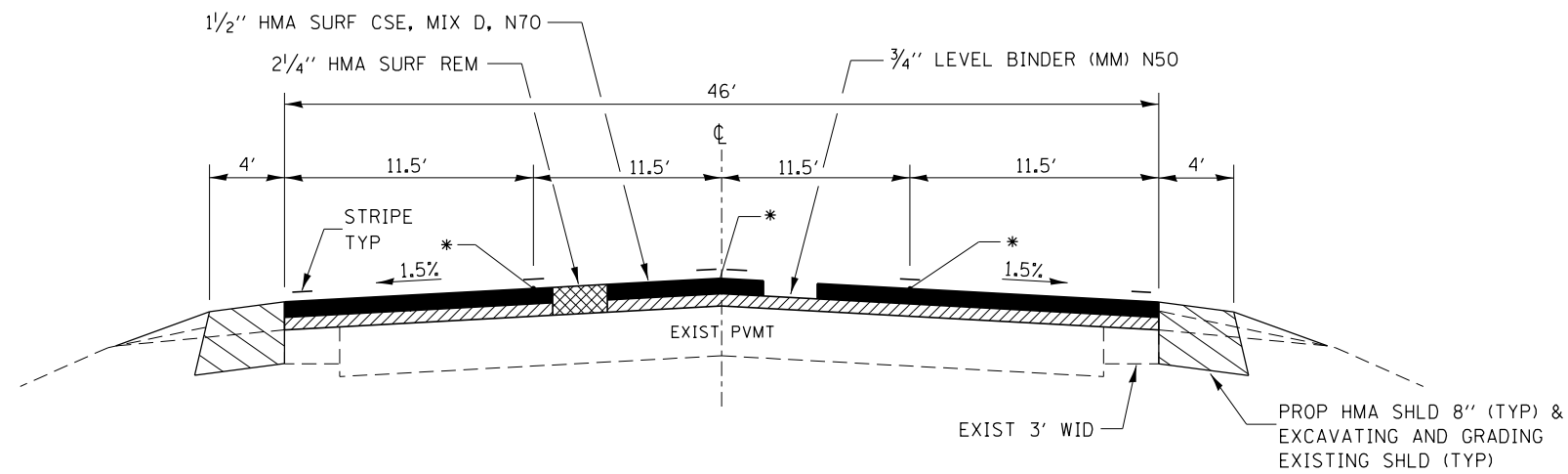
103 → 8 NAM

CODE NO.	ITEM	UNIT	TOTAL QUANTITY	CONSTRUCTION CODE			
				80% FEDERAL 20% STATE ROADWAY	80% FEDERAL 20% STATE ROADWAY	90% FEDERAL 10% STATE ROADWAY	90% FEDERAL 10% STATE ROADWAY
				0005 URBAN	0005 URBAN	0021 URBAN	0021 RURAL
Δ 78008210	POLYUREA PAVEMENT MARKING TYPE I - LINE 4"	FOOT	130732	34536	96196		
Δ 78008240	POLYUREA PAVEMENT MARKING TYPE I - LINE 8"	FOOT	807	205	602		
Δ 78008250	POLYUREA PAVEMENT MARKING TYPE I - LINE 12"	FOOT	500	140	360		
Δ 78008270	POLYUREA PAVEMENT MARKING TYPE I - LINE 24"	FOOT	48	26	22		
Δ 78100100	RAISED REFLECTIVE PAVEMENT MARKER	EACH	861	236	625		
	78300200 RAISED REFLECTIVE PAVEMENT MARKER REMOVAL	EACH	1660	422	1238		
	X0326898 CENTER LINE - RUMBLE STRIP - 16"	FOOT	14494			3444	11050
	X0327980 PAVEMENT MARKING REMOVAL - WATER BLASTING	50 FT	48764	12894	35870		
Δ X7830074	GROOVING FOR RECESSED PAVEMENT MARKING 7"	FOOT	7948	2044	5904		
	Z0030850 TEMPORARY INFORMATION SIGNING	50 FT	42	21	21		
	Z0034105 MATERIAL TRANSFER DEVICE	TON	10514	2715	7799		
	Z0048665 RAILROAD PROTECTIVE LIABILITY INSURANCE	LSUM	1	0.25	0.75		
	X3200004 HOT-MIX ASPHALT SURFACE REMOVAL - LONGITUDINAL JOINTS	50 YD	2728	716	2012		

13

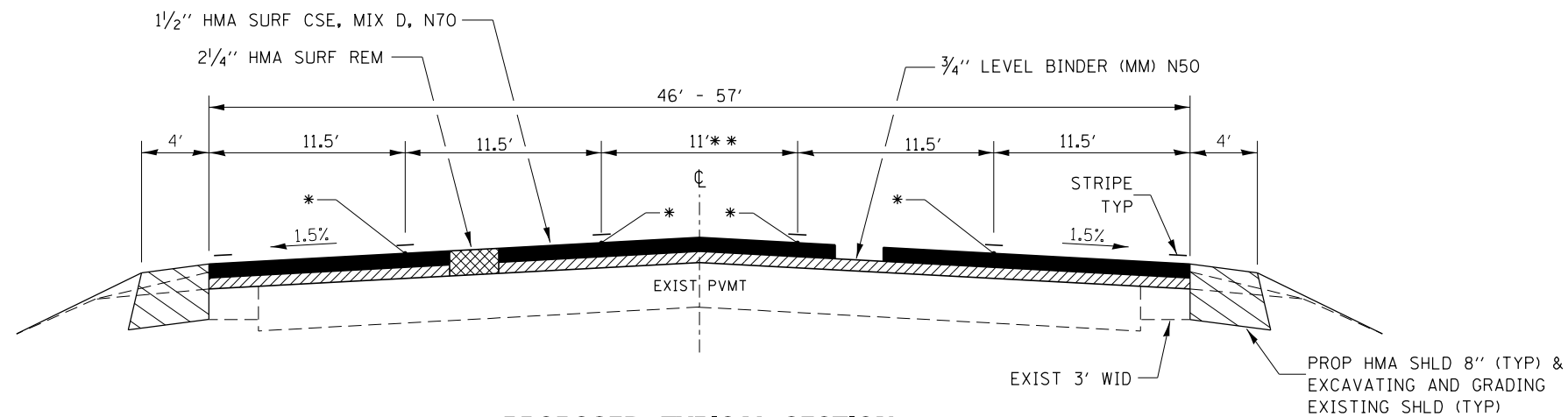
Δ SPECIALTY ITEMS

REV



**PROPOSED TYPICAL SECTION**

(LOOKING NORTH)  
 STA 484+50 TO STA 518+94  
 STA 533+10 TO STA 645+06



**PROPOSED TYPICAL SECTION**

(LOOKING NORTH)  
 STA 518+94 TO STA 533+10

\*\* VARIES FROM 0' AT STA 518+94 TO 11' AT 522+09  
 VARIES FROM 11' AT 529+70 TO 0' AT STA 533+10

\* JOINT TRIMMING AT THESE LOCATIONS - SEE SPECIAL PROVISION FOR CONTRUCTION SEQUENCE FOR JOINT TRIMMING

FILE NAME =	USER NAME = corcoranlm	DESIGNED -	REVISED -	<b>STATE OF ILLINOIS DEPARTMENT OF TRANSPORTATION</b>	<b>TYPICAL SECTIONS</b>				F.A.P. RTE.	SECTION	COUNTY	TOTAL SHEETS	SHEET NO.
p:\11084EBIDINTEG\illinois.gov\PWIDOT\Documents\IDOT Offices\District 3\Projects\0366\Drawings\B366A98-shd-details.DGN		CHECKED -	REVISED -		840	(14)RS-5	KANKAKEE	13	6				
Default		DATE -	REVISED -		SCALE: SHEET OF SHEETS STA. TO STA.				CONTRACT NO. 66A98				
									ILLINOIS FED. AID PROJECT				

MAINLINE SCHEDULE										
LOCATION	LENGTH	AREA	HMA SURF REM 2 1/4"	HMA SURF REM- LONG JT	HMA SURF CSE	LEVEL BIND (MM)	TEMP RAMP	BIT MATLS (TACK CT)	MIX FOR CRKS JTS & FLANGEWAYS	LEVEL BIND (HM)
STA	FOOT	SQ YD	SQ YD	SQ YD	TON	TON	SQ YD	LBS	TON	TON
<b>URBAN:</b>										
484+50 - 518+94	3444	17603	17603	574	1527	739	460	12011	5.3	8.8
518+94 - 522+09	315	1803	1803	70	157	76		1233	0.5	0.9
522+09 - 525+35	326	1666	1666	72	146	70		1141	0.5	0.8
<b>URBAN TOTAL</b>	<b>4085</b>	<b>21072</b>	<b>21072</b>	<b>716</b>	<b>1830</b>	<b>885</b>	<b>460</b>	<b>14385</b>	<b>6.3</b>	<b>10.5</b>
<b>RURAL:</b>										
525+35 - 529+70	435	2223	2223	97	195	93		1522	0.7	1.1
529+70 - 533+10	340	1946	1946	76	170	82		1331	0.6	1.0
533+10 - 643+42	11032	56386	56386	1839	4891	2368	460	38474	16.9	28.2
<b>RURAL TOTAL</b>	<b>11807</b>	<b>60555</b>	<b>60555</b>	<b>2012</b>	<b>5256</b>	<b>2543</b>	<b>460</b>	<b>41327</b>	<b>18.2</b>	<b>30.3</b>
<b>PROJECT TOTAL</b>			<b>81627</b>	<b>2728</b>	<b>7086</b>	<b>3428</b>	<b>920</b>	<b>55712</b>	<b>24.5</b>	<b>40.8</b>

TEMPORARY PAVEMENT MARKING SCHEDULE												
LOCATION	LENGTH	POLYUREA PAVEMENT MARKING, TY 1								SHORT TERM PAVEMENT MARKING	SHORT TERM PVMT MARK REMOVAL	PVMT MARK REM WATER BLASTING
		LINE 4 INCH		LINE 6 INCH	LINE 8 INCH	LINE 12 INCH		LINE 24 INCH	LETTERS & SYMBOLS			
		WHITE	YELLOW	WHITE	WHITE	WHITE	YELLOW	WHITE	WHITE			
STA	FOOT	FOOT	FOOT	FOOT	FOOT	FOOT	FOOT	FOOT	SQ FT	SQ FT	SQ FT	SQ FT
<b>URBAN:</b>												
484+50 - 518+94	3444	13776	13776	1722						1653	551	10045
518+94-522+09	315	1260	2520	158			82			213	71	1421
522+09 - 525+35	326	1304	1900	164	205		58	26	31.2	216	72	1428
<b>URBAN TOTALS</b>	<b>4085</b>		<b>34536</b>	<b>2044</b>	<b>205</b>		<b>140</b>	<b>26</b>	<b>31.2</b>	<b>2082</b>	<b>694</b>	<b>12894</b>
<b>RURAL:</b>												
525+35 - 529+70	435	1740	2120	218	602	172	64	22	46.8	264	88	2124
529+70 - 533+10	340	1360	2720	170			124			231	77	1569
533+10 - 643+42	11032	44128	44128	5516						5295	1765	32177
<b>RURAL TOTALS</b>	<b>11807</b>		<b>96196</b>	<b>5904</b>	<b>602</b>		<b>360</b>	<b>22</b>	<b>46.8</b>	<b>5790</b>	<b>1930</b>	<b>35870</b>
<b>TOTALS</b>	<b>15892</b>		<b>130732</b>	<b>7948</b>	<b>807</b>		<b>500</b>	<b>48</b>	<b>78</b>	<b>7872</b>	<b>2624</b>	<b>48764</b>

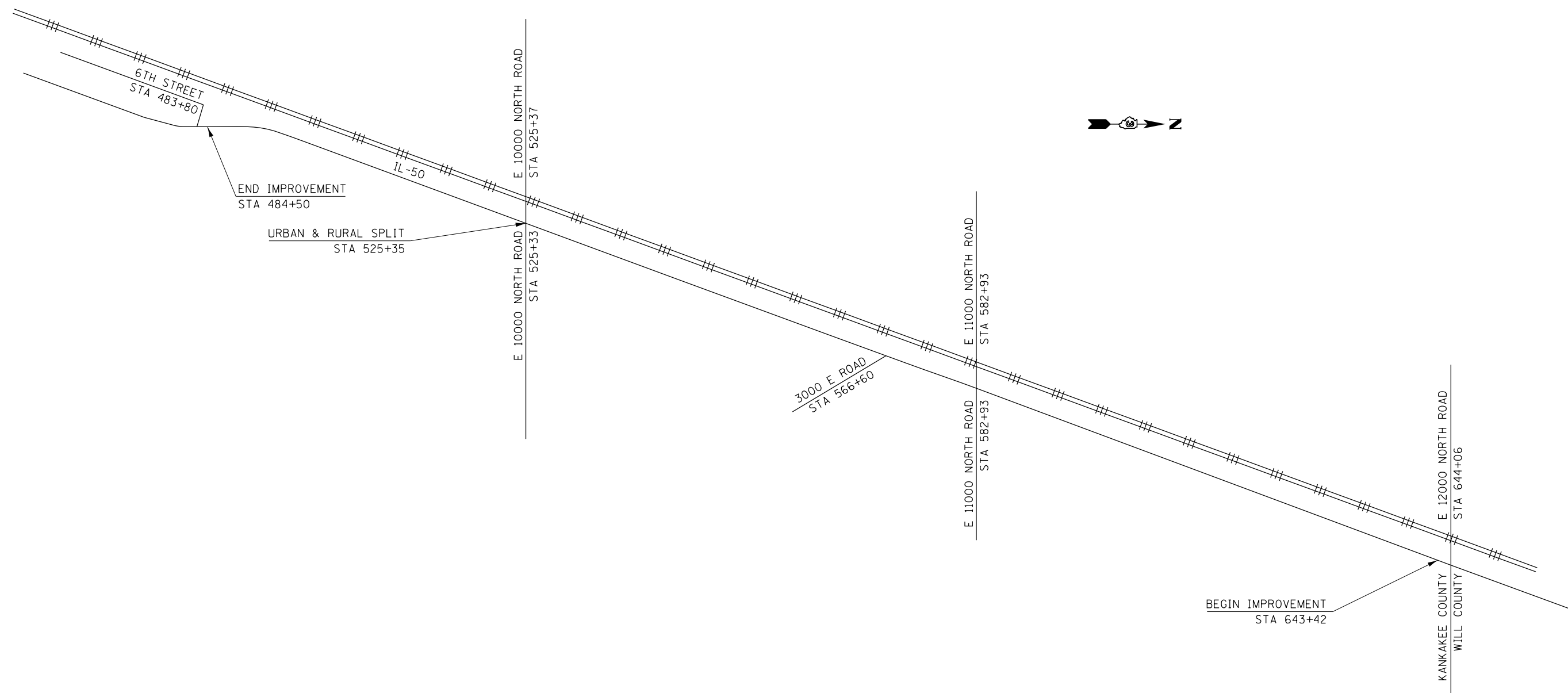
PAVEMENT MARKING SCHEDULE																	
LOCATION	LENGTH	POLYUREA PAVEMENT MARKING, TY 1							PREFORMED PLASTIC PVMT MARK TY B - 6 INCH	GROOVING FOR RECESSED PVMT MARKING 7 INCH	RAISED REF PAVEMENT MARK REM	RAISED REFLECTIVE PAVEMENT MARKER					
		LINE 4 INCH		LINE 8 INCH	LINE 12 INCH		LINE 24 INCH	LETTERS & SYMBOLS				WHITE	FOOT	FOOT	AMBER		CRYSTAL
		WHITE	YELLOW	WHITE	WHITE	YELLOW	WHITE	WHITE							SO FT	ONE WAY	TWO-WAY
STA	FOOT	FOOT	FOOT	FOOT	FOOT	FOOT	FOOT	FOOT	SO FT	FOOT	EACH	EACH	EACH	EACH			
<b>URBAN:</b>																	
484+50 - 518+94	3444	13776	13776							1722		1722	366	90	88		
518+94 - 522+09	315	1260	2520			82			158	158	30	18		10			
522+09 - 525+35	326	1304	1900	205		58	26	31.2	164	164	26	16		14			
<b>URBAN TOTAL</b>	<b>4085</b>		<b>34536</b>	<b>205</b>		<b>140</b>	<b>26</b>	<b>31.2</b>	<b>2044</b>	<b>2044</b>	<b>422</b>		<b>236</b>				
<b>RURAL:</b>																	
525+35 - 529+70	435	1740	2120	602	172	64	22	46.8	218	218	34	18		19			
529+70 - 533+10	340	1360	2720			124			170	170	32	20		10			
533+10 - 643+42	11032	44128	44128						5516	5516	1172		280	278			
<b>RURAL TOTAL</b>	<b>11807</b>		<b>96196</b>	<b>602</b>		<b>360</b>	<b>22</b>	<b>46.8</b>	<b>5904</b>	<b>5904</b>	<b>1238</b>		<b>625</b>				
<b>TOTAL</b>	<b>15892</b>		<b>130732</b>	<b>807</b>		<b>500</b>	<b>48</b>	<b>78</b>	<b>7948</b>	<b>7948</b>	<b>1660</b>		<b>861</b>				

NOTES:  
 ADDITIONAL QUANTITY HAS BEEN INCLUDED TO ALLOW FOR TWO SEPARATE APPLICATIONS OF POLYUREA PAVEMENT MARKING LINE  
 SINGLE RAISED REFLECTIVE PAVEMENT MARKERS SHALL BE INSTALLED AT 80' CENTERS IN THE 6" WHITE LANE LINES. DOUBLE MARKERS ARE NOT REQUIRED

SAFETY SHOULDER AND RUMBLE STRIP SCHEDULE					
LOCATION	LENGTH	CL RUMBLE 16"	HMA SHOULDER 8"	EXCAVATING & GRADING EXISTING SHOULDER	RUMBLE STRIPS 8"
STA	FOOT	FOOT	SQ YD	UNIT	FOOT
484+50 - 525+35	4085	3444	3585	81	8066
<b>URBAN TOTAL</b>	<b>4085</b>	<b>3444</b>	<b>3585</b>	<b>81</b>	<b>8066</b>
525+35 - 566+60	4125	3350	3542	80	7970
566+60 - 582+93	1633	1633	1391	31	3130
582+93 - 643+60	6067	6067	5352	120	12041
<b>RURAL TOTAL</b>	<b>11825</b>	<b>11050</b>	<b>10285</b>	<b>231</b>	<b>23141</b>
<b>PROJECT TOTAL</b>	<b>15910</b>	<b>14494</b>	<b>13870</b>	<b>312</b>	<b>31207</b>

SIDE ROAD AND ENTRANCE SCHEDULE						
LOCATION	DESCRIPTION	SURFACE	HMA SURF REM 1-1/2"	TEMP RAMP	BIT MATLS (TACK CT)	INC HMA SURF
STA			SQ YD	SQ YD	LBS	TON
485+30 LT	CE	HMA/AGG	33		15	2.8
485+70 RT	CE	HMA	84	22	38	7.1
485+90 LT	CE	HMA	49	14	22	4.1
486+80 LT	CE	HMA	41	16	18	3.4
487+50 LT	PE	HMA	63		28	5.3
488+30 RT	PE	HMA	44		20	3.7
525+33 RT	10000 N RD	HMA	9323	24	4195	783.1
<b>URBAN TOTAL</b>			<b>9637</b>	<b>76</b>	<b>4336</b>	<b>809.5</b>
525+37 LT	10000 N RD	HMA	130	14	59	10.9
554+68 RT	CE	HMA/AGG	43		19	3.6
556+70 RT	CE	HMA	40	11	18	3.4
558+30 RT	CE	HMA	50	13	23	4.2
559+50 RT	CE	HMA	41	16	18	3.4
560+10 RT	CE	HMA	45	13	20	3.8
561+50 RT	CE	AGG	126	16	57	10.6
566+60 RT	3000 E RD	HMA	243	22	109	20.4
582+93 RT	11000 N RD	HMA	150	17	68	12.6
582+93 LT	11000 N RD	HMA	142	12	64	11.9
<b>RURAL TOTAL</b>			<b>1010</b>	<b>134</b>	<b>455</b>	<b>84.8</b>
<b>PROJECT TOTAL</b>			<b>10647</b>	<b>210</b>	<b>4791</b>	<b>894.3</b>



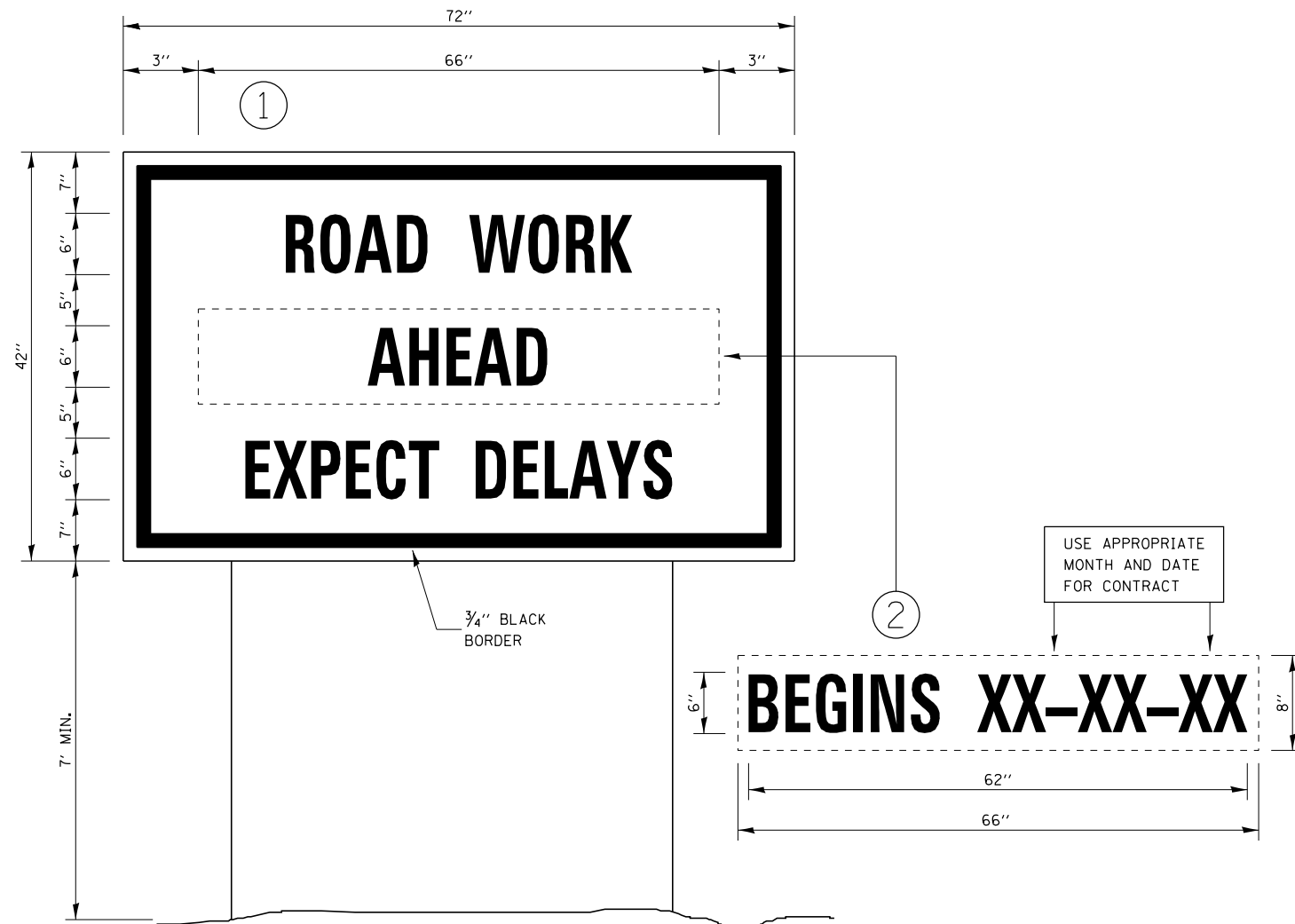


FILE NAME =	USER NAME = corcoranim	DESIGNED -	REVISED -
p:\IL\084EBIDINTEG.illinois.gov\PI\DOT\Documents\DOT Offices\District 3\Projects\0366\Drawings\0366A98-shr-details.DGN		REVISED -	REVISED -
Default	PLOT SCALE = 100.0000' / in.	CHECKED -	REVISED -
	PLOT DATE = 3/20/2017	DATE -	REVISED -

**STATE OF ILLINOIS  
DEPARTMENT OF TRANSPORTATION**

<b>LOCATION MAP</b>			
SCALE:	SHEET	OF	SHEETS
	STA.	TO	STA.

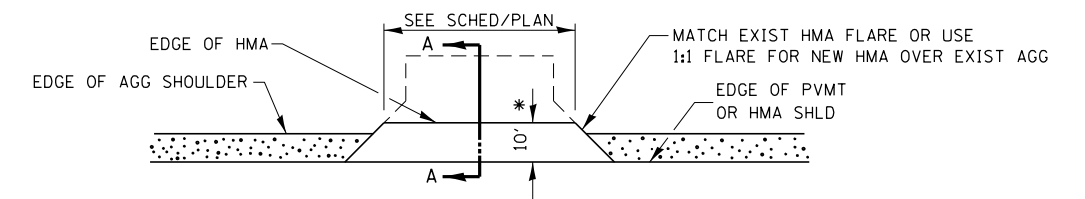
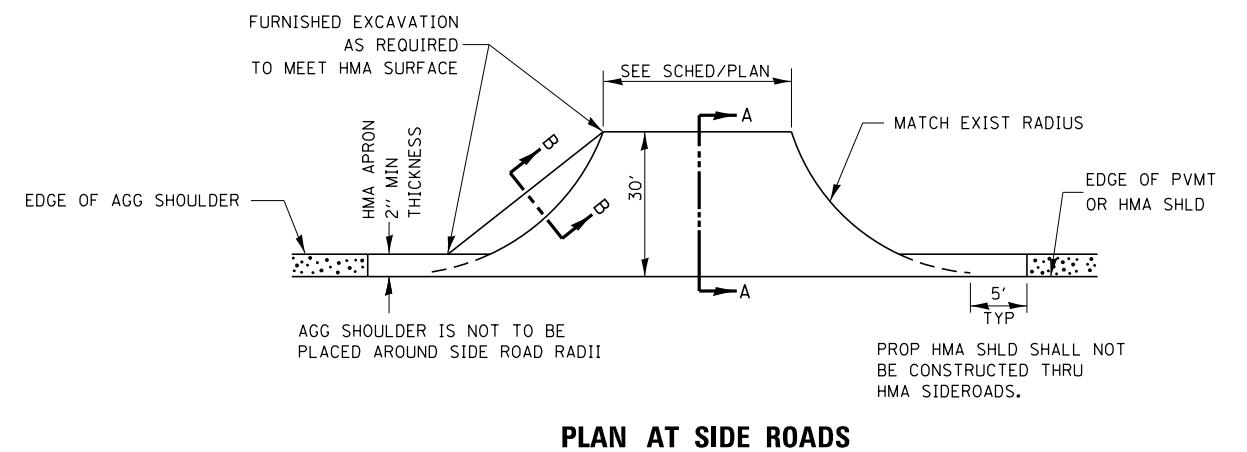
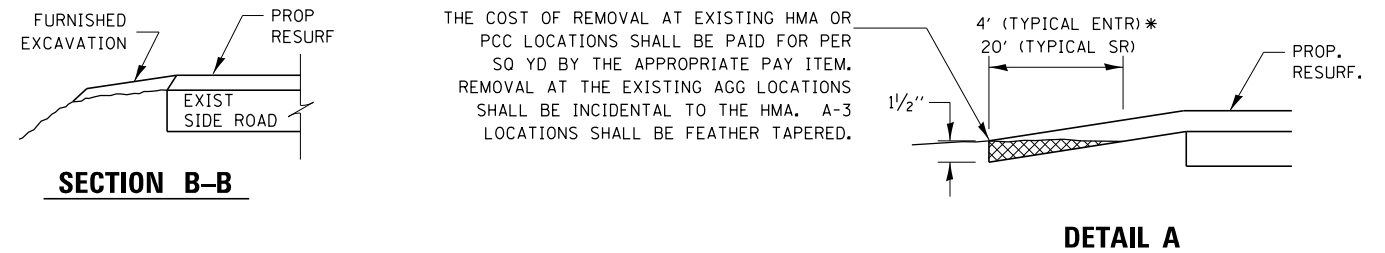
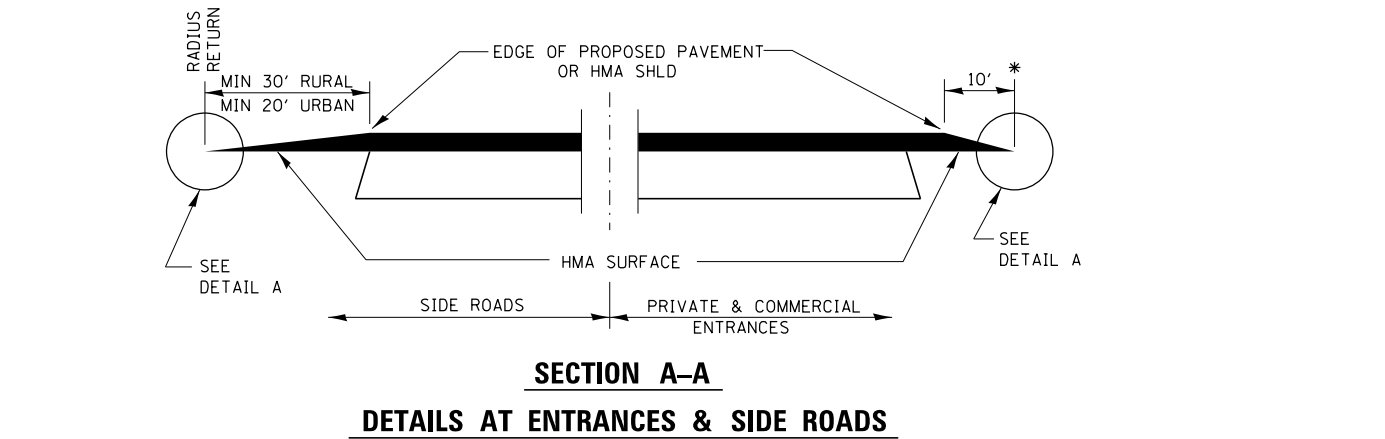
F.A.P. RTE.	SECTION	COUNTY	TOTAL SHEETS	SHEET NO.
840	(141)RS-5	KANKAKEE	13	9
CONTRACT NO. 66A98			ILLINOIS FED. AID PROJECT	



**TEMPORARY INFORMATION SIGNING**

**NOTES:**

1. USE 6" D BLACK LETTERING ON FLUORESCENT ORANGE BACKGROUND.
2. ERECT SIGNS AT LOCATIONS IN ADVANCE OF THE "ROAD CONSTRUCTION AHEAD" SIGNS AS DIRECTED BY THE ENGINEER.
3. ERECT SIGN ① WITH INSTALLED PANEL ② A MINIMUM OF ONE WEEK PRIOR TO THE START OF THE LANE CLOSURE.
4. REMOVE PANEL ② ON THAT DATE.
5. SEE SPECIAL PROVISION "TEMPORARY INFORMATION SIGNING" FOR ADDITIONAL INFORMATION.
6. WILL BE PAID FOR PER SQ FT AS "TEMPORARY INFORMATION SIGNING". EACH SIGN = 21 SQ FT AND THE DATE PANEL ② WILL NOT BE MEASURED SEPARATELY FOR PAYMENT.



**PLAN AT PRIVATE & COMMERCIAL ENTRANCES**

(DO NOT RESURFACE FIELD ENTRANCES)

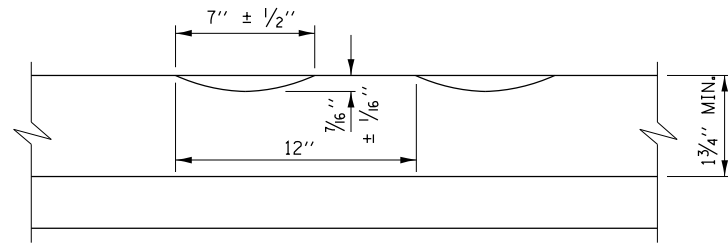
\* PROPOSED HMA RESURFACING AT PUBLIC EDUCATIONAL FACILITY ENTRANCES SHALL BE EXTENDED TO THE RIGHT-OF-WAY LIMITS.

FILE NAME =	USER NAME = corcoranm	DESIGNED -	REVISED -
pw\11084EBIDINTEG.illinois.gov\PIWIDOT\Documents\IDOT Offices\District 3\Projects\0366A98\B366A98-shd-details.DGN		REVISED -	
Default	PLOT SCALE = 100.0000' / in.	CHECKED -	REVISED -
	PLOT DATE = 3/20/2017	DATE -	REVISED -

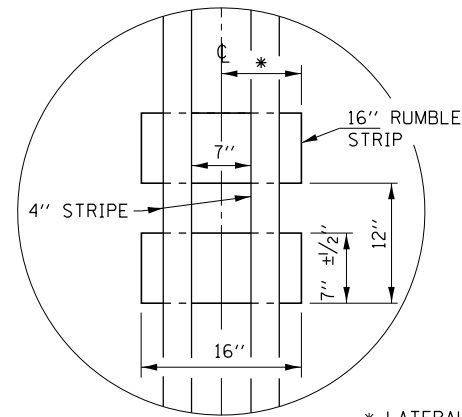
**STATE OF ILLINOIS  
DEPARTMENT OF TRANSPORTATION**

<b>DETAILS</b>			
SCALE:	SHEET	OF SHEETS	STA. TO STA.

F.A.P. RTE.	SECTION	COUNTY	TOTAL SHEETS	SHEET NO.
840	(14)RS-5	KANKAKEE	13	10
CONTRACT NO. 66A98			ILLINOIS FED. AID PROJECT	

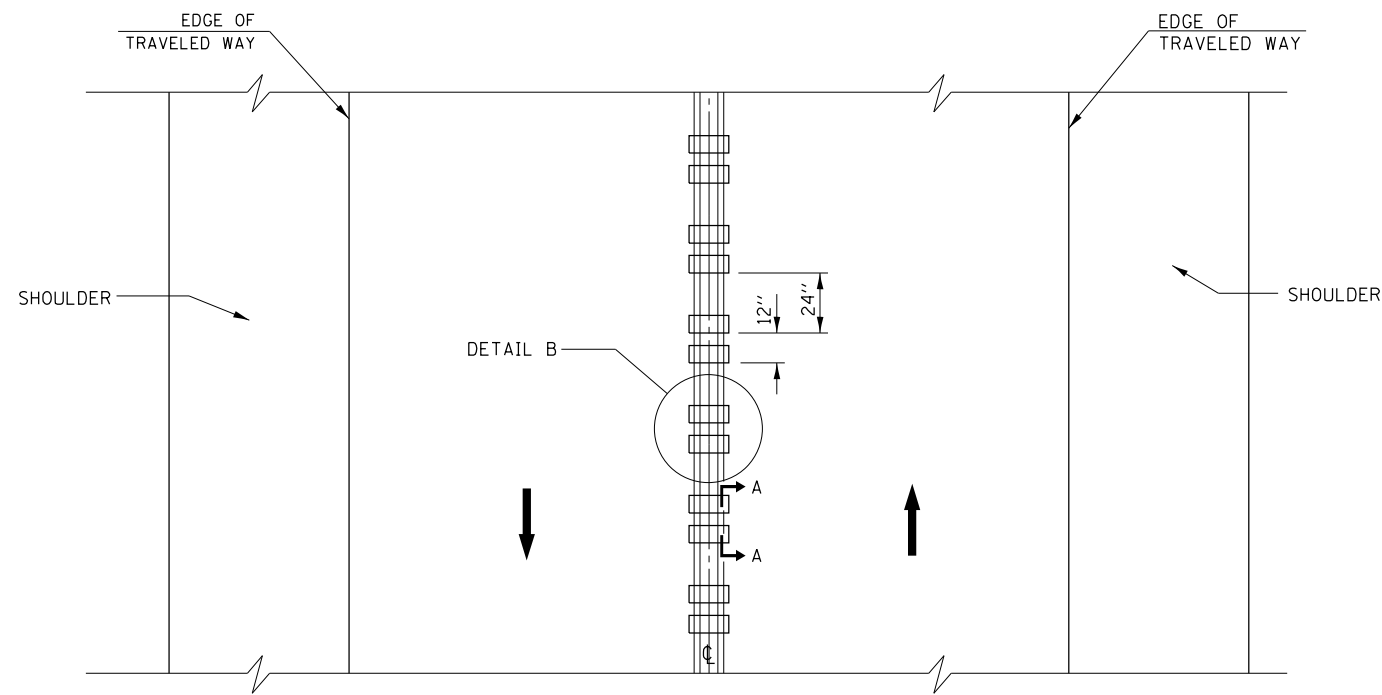


SECTION A-A

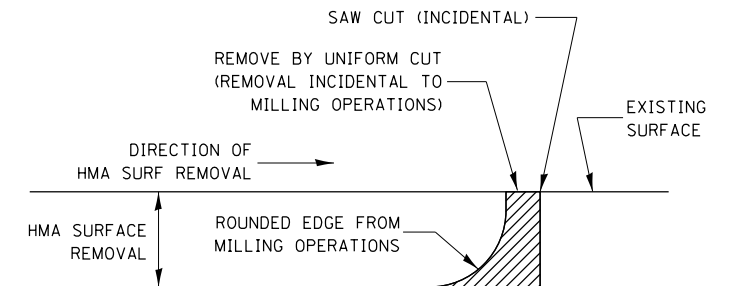


DETAIL B

\* LATERAL DEVIATION SHALL NOT EXCEED ONE INCH IN 100 FEET.



TWO-WAY ROAD



NOTE:  
WHEN MILLING OPERATIONS PRODUCE A ROUNDED EDGE, THEN A SAW CUT SHALL BE USED TO MANUFACTURE A PERPENDICULAR EDGE AS SHOWN IN THE DETAIL. THE ENGINEER SHALL BE THE SOLE JUDGE CONCERNING THE USE OF THIS DETAIL

**HMA DETAIL AT BUTT JOINTS**

GENERAL NOTES

SEE DETAILS FOR STRIPING.

RUMBLE STRIPS SHALL NOT BE PLACED ON BRIDGES.

ALL RUMBLE STRIPS SHALL BE MILLED.

CENTERLINE RUMBLE STRIPS SHALL BE CONTINUOUS THROUGH CONNECTIONS OF SIDEROADS WITH NO LEFT TURN LANES.

DISCONTINUE CENTERLINE RUMBLE STRIPS THROUGH THE LIMITS OF ALL LEFT TURN LANES, INCLUDING ANY LANE TAPER SECTIONS.

WHERE USED, ADJUST SPACING OF RAISED REFLECTIVE PAVEMENT MARKERS TO FALL IN WIDER GAP BETWEEN RUMBLE STRIPS.

CENTERLINE RUMBLE STRIPS SHALL BE PLACED AT LOCATIONS SHOWN ON THE PLANS.

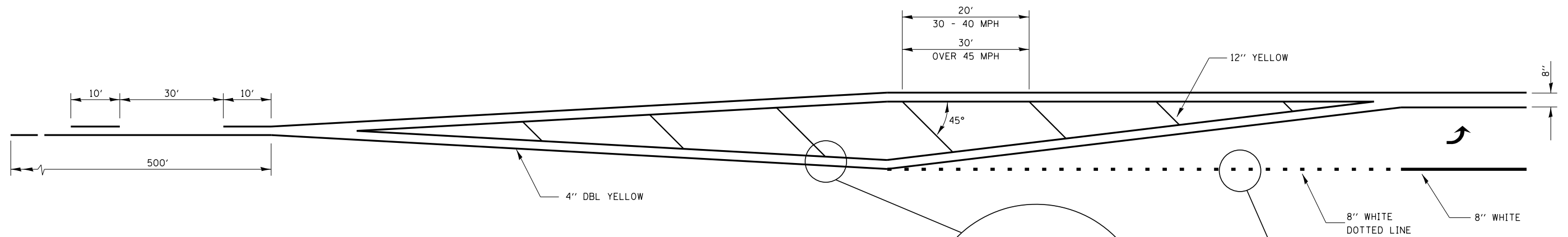
FILE NAME =	USER NAME = corcoranlm	DESIGNED -	REVISED -
p:\11\084EBIDINTEG\illinois.gov\PWIDOT\Documents\IDOT Offices\District 3\Projects\0366\Drawings\0366A98-shd-details.DGN		CHECKED -	REVISED -
Default	PLOT DATE = 3/20/2017	DATE -	REVISED -

STATE OF ILLINOIS  
DEPARTMENT OF TRANSPORTATION

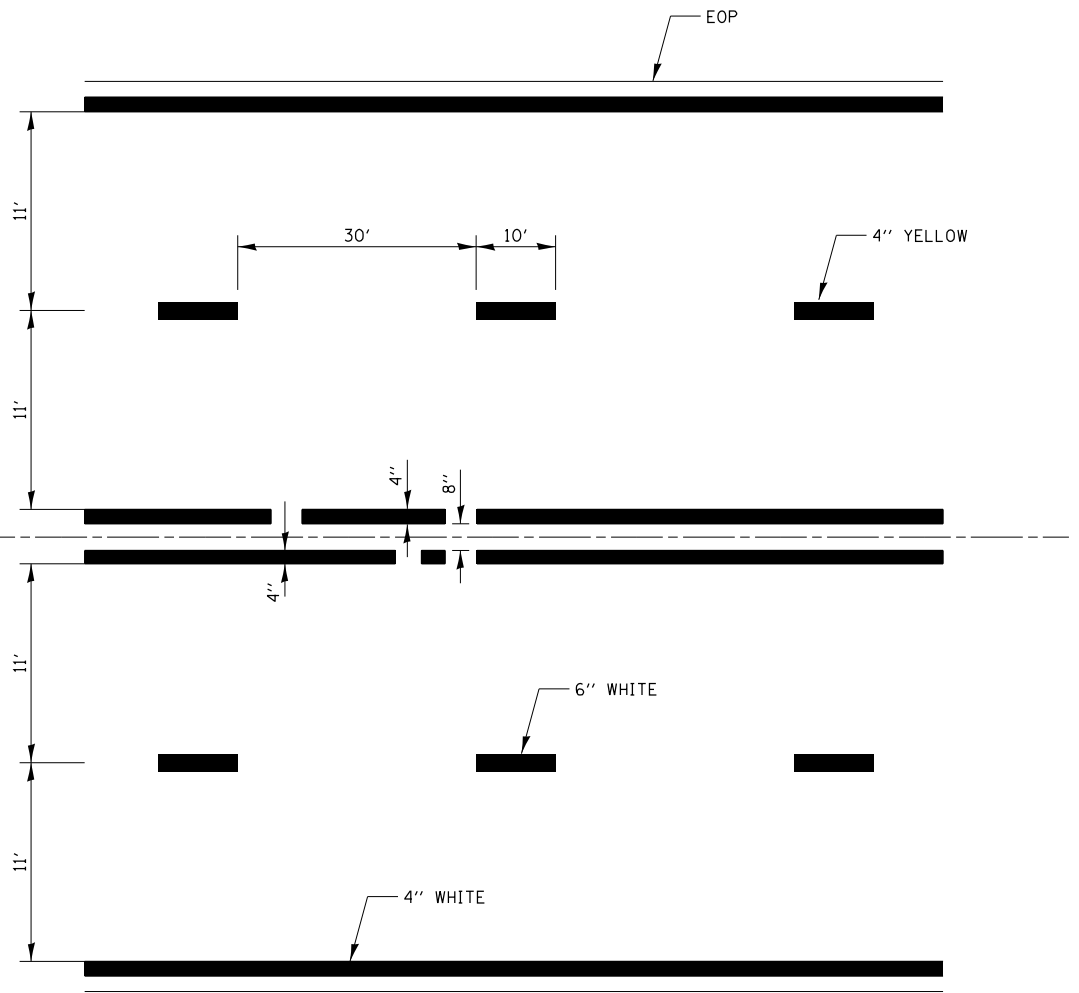
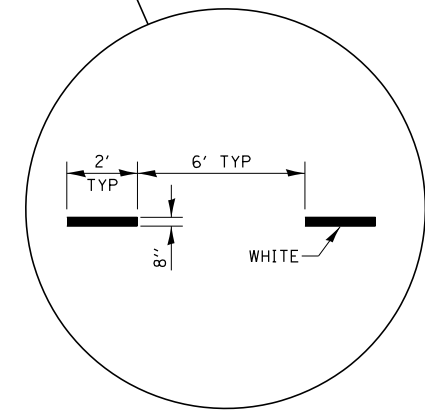
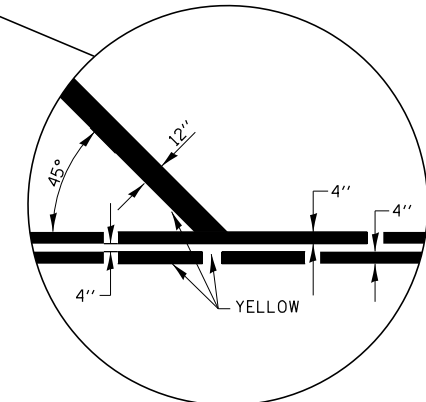
DETAILS

SCALE: SHEET OF SHEETS STA. TO STA.

F.A.P. RTE.	SECTION	COUNTY	TOTAL SHEETS	SHEET NO.
840	(14)RS-5	KANKAKEE	13	11
CONTRACT NO. 66A98			ILLINOIS FED. AID PROJECT	



**LEFT TURN LANE WITH APPROACH MEDIAN**



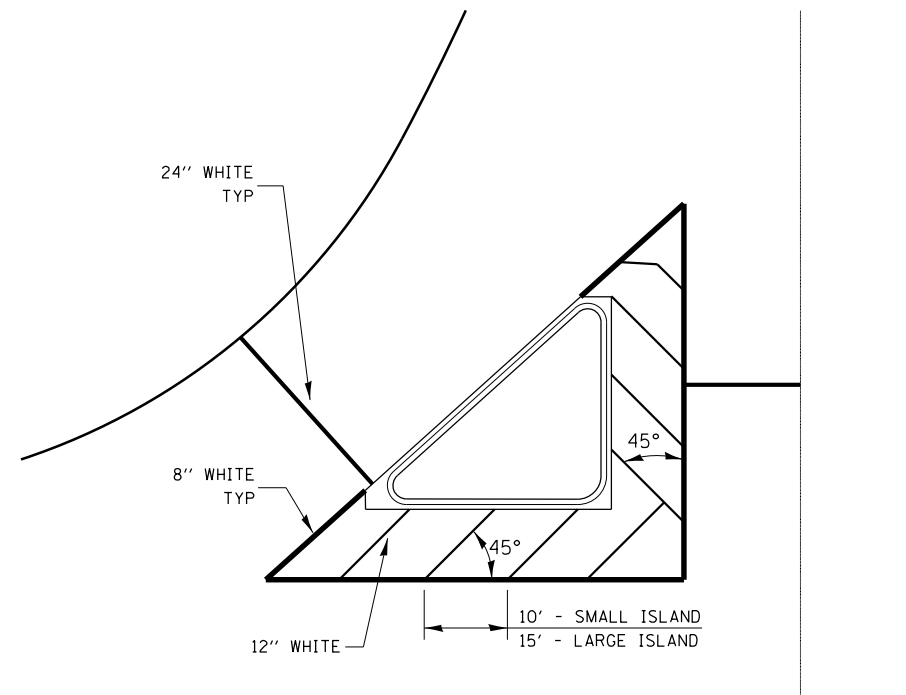
**PAVEMENT MARKING**

FILE NAME =	USER NAME = corcoranlm	DESIGNED -	REVISED -
p:\11\084EBIDINTEG\illinois.gov\PIWIDOT\Documents\IDOT Offices\District 3\Projects\0366\B366A98-shd-details.DGN		DRAWN -	REVISED -
Default	PLOT SCALE = 100.0000' / in.	CHECKED -	REVISED -
	PLOT DATE = 3/20/2017	DATE -	REVISED -

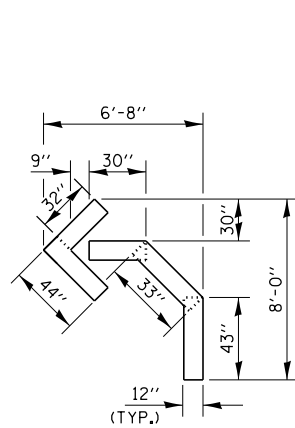
**STATE OF ILLINOIS  
DEPARTMENT OF TRANSPORTATION**

<b>DETAILS</b>			
SCALE:	SHEET	OF	SHEETS
	STA.		TO STA.

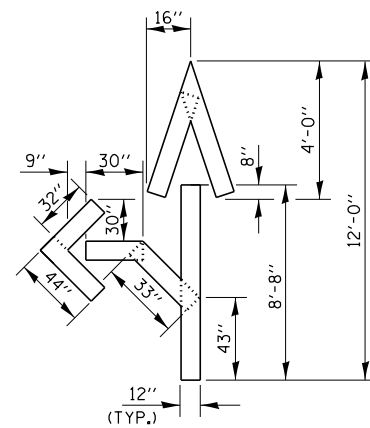
F.A.P. RTE.	SECTION	COUNTY	TOTAL SHEETS	SHEET NO.
840	(14)RS-5	KANKAKEE	13	12
CONTRACT NO. 66A98				
ILLINOIS FED. AID PROJECT				



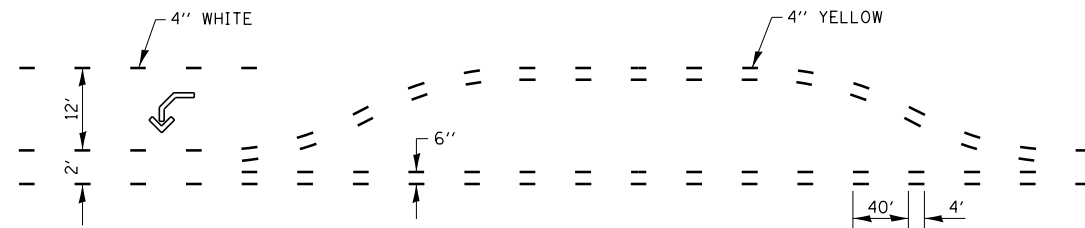
**TYPICAL ISLAND**



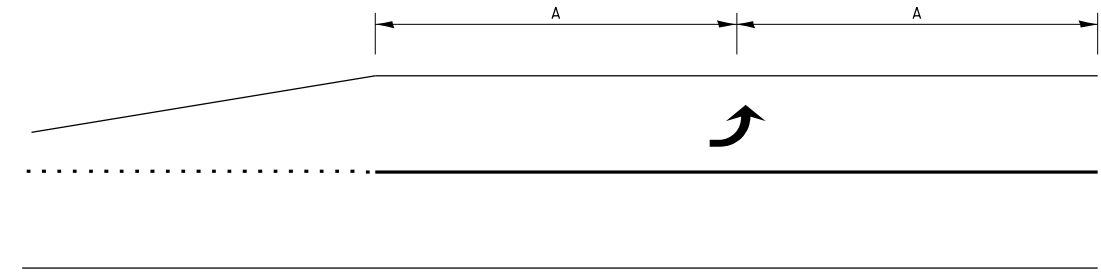
QUANTITY  
12" LINE = 16 LIN FT  
OR 4" LINE = 48 LIN FT



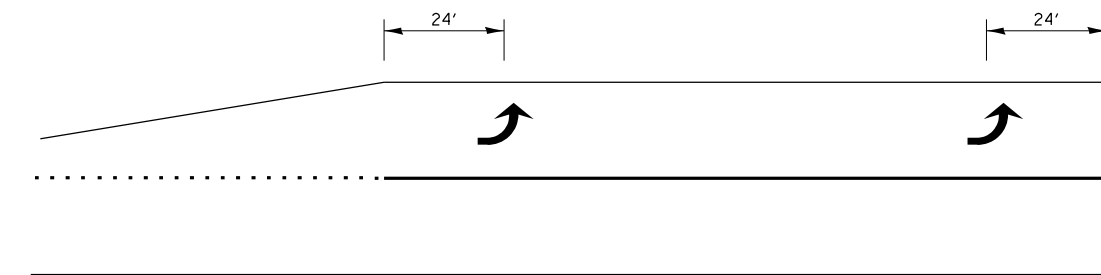
QUANTITY  
12" LINE = 29 LIN FT  
OR 4" LINE = 87 LIN FT



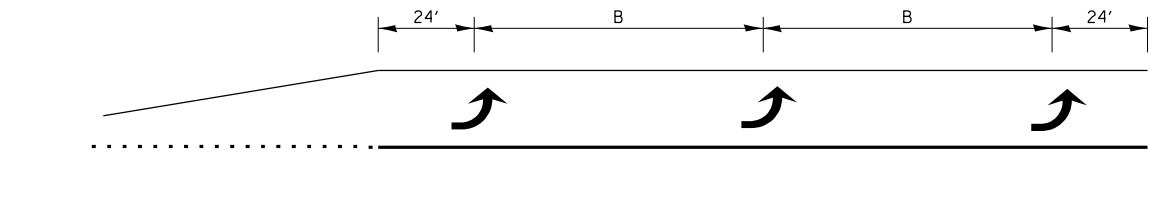
**SHORT-TERM PAVEMENT MARKING  
FOR MEDIANS AND ARROWS**



**99' AND UNDER**



**100' TO 149'**



**150' AND LONGER**

**TYPICAL PLACEMENT OF ARROWS  
IN TURN LANES**

FILE NAME =	USER NAME = corcoranim	DESIGNED -	REVISED -
pw:\11\084EBIDINTEG\illinois.gov\PIWIDOT\Documents\IDOT Offices\District 3\Projects\0366\B366A98-shd-details.DGN		CHECKED -	REVISED -
Default	PLOT DATE = 3/20/2017	DATE -	REVISED -

**STATE OF ILLINOIS  
DEPARTMENT OF TRANSPORTATION**

<b>DETAIL</b>			
SCALE:	SHEET	OF SHEETS	STA. TO STA.

F.A.P. RTE.	SECTION	COUNTY	TOTAL SHEETS	SHEET NO.
840	(141)RS-5	KANKAKEE	13	13
CONTRACT NO. 66A98				
ILLINOIS FED. AID PROJECT				