

STATE OF ILLINOIS
 DEPARTMENT OF TRANSPORTATION
 DIVISION OF HIGHWAYS

**PROPOSED
 HIGHWAY PLANS**

F.A.P. ROUTE 322 (US 51)
 SECTION [57-1(1)]SG
 SIGNING
 MCLEAN COUNTY

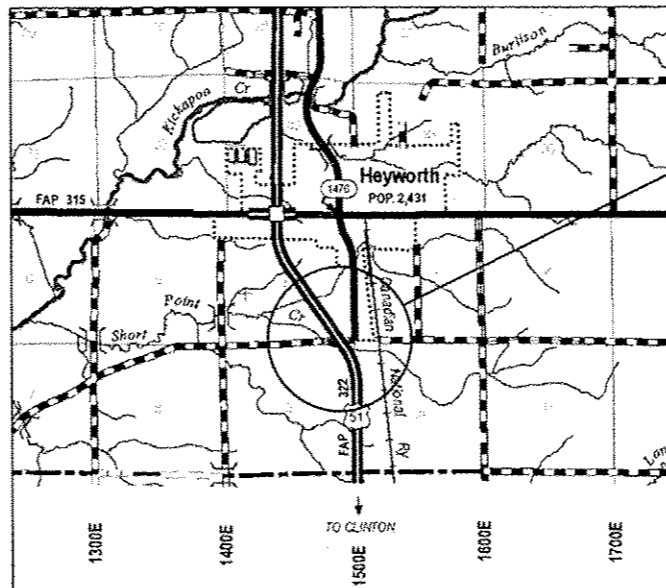
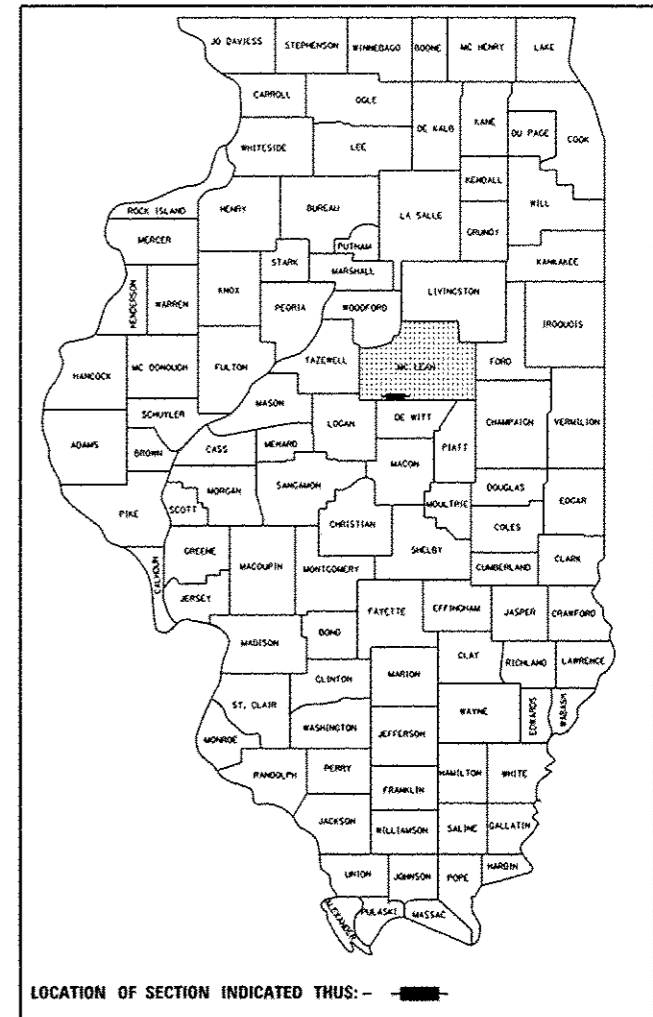
C-95-008-17

HSIP-0322(111)

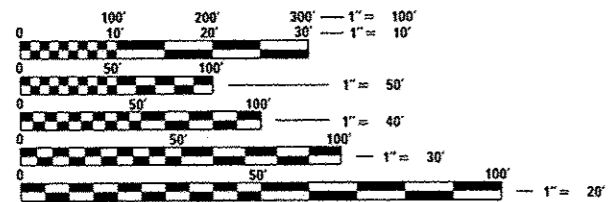
F.A.P. RTE.	SECTION	COUNTY	TOTAL SHEETS	SHEET NO.
322	[57-1(1)]SG	MCLEAN	9	1
		ILLINOIS	CONTRACT NO. 70C53	

D-95-008-17

FOR INDEX OF SHEETS, SEE SHEET NO. 2
 FOR SUMMARY OF QUANTITIES, SEE SHEET NO. 3-4



FAP 322 (US 51) & 100 N
 FLASHING BEACON SYSTEM



FULL SIZE PLANS HAVE BEEN PREPARED USING STANDARD ENGINEERING SCALES. REDUCED SIZED PLANS WILL NOT CONFORM TO STANDARD SCALES. IN MAKING MEASUREMENTS ON REDUCED PLANS, THE ABOVE SCALES MAY BE USED.

J.U.L.I.E.
 JOINT UTILITY LOCATION INFORMATION FOR EXCAVATION
 1-800-892-0123
 OR 811

PROJECT ENGINEER: JEFF ALLEN
 SQUAD LEADER: ROGER BIGGS
 PHONE NUMBER (217)465-4181
 CONTRACT NO. 70C53

STATE OF ILLINOIS
 DEPARTMENT OF TRANSPORTATION

SUBMITTED March 16 20 17
Panda James REGIONAL ENGINEER

May 12 20 17
Muhammad M. Adhiz, P.E. ENGINEER OF DESIGN AND ENVIRONMENT

May 12 20 17
[Signature] DIRECTOR OF PROGRAM DEVELOPMENT 2

PRINTED BY THE AUTHORITY
 OF THE STATE OF ILLINOIS

GENERAL NOTES

- G.N. - 100 ENGLISH UNITS OF MEASUREMENT SHALL GOVERN OVER AND SUPERSEDE ANY METRIC UNITS SHOWN IN THIS CONTRACT. WHERE INCLUDED, METRIC UNITS ARE FOR INFORMATION ONLY.
- G.N.-100A ELECTRONIC FILES AND/OR ELECTRONIC SURVEY INFORMATION INCLUDING CADD FILES WILL NOT BE AVAILABLE TO THE CONTRACTOR.
- G.N.- 105.07B EXISTING STATE-OWNED AND MAINTAINED UTILITY LINES ARE SHOWN ON THE PLANS TO INDICATE THEIR PRESENCE AND APPROXIMATE LOCATION. THE CONTRACTOR SHALL SECURE AN APPROVED LOCATING FIRM TO LOCATE STATE-OWNED UTILITIES PRIOR TO COMMENCING ANY EXCAVATION IN THE VICINITY OF THESE LINES IN ACCORDANCE TO SECTION 803 OF THE STANDARD SPECIFICATIONS. SHOULD ANY OF THE LINES BE DAMAGED BY THE CONTRACTOR'S OPERATION, THE CONTRACTOR SHALL REPAIR THEM TO THE SATISFACTION OF THE ENGINEER AT NO COST TO THE STATE.
- ALSO THERE MAY BE UTILITIES PRESENT WHICH WERE INSTALLED BY THE STATE BUT ARE MAINTAINED BY OTHERS (CITY, TOWN, ETC.) THE APPROXIMATE LOCATIONS OF THESE LINES ARE ALSO SHOWN ON THE PLANS ALONG WITH THE NAME OF THE MAINTAINING AGENCY. THE CONTRACTOR SHALL COORDINATE THE LOCATION OF THESE LINES WITH THE LOCAL AGENCY PRIOR TO COMMENCING ANY EXCAVATION OR BORING IN THEIR VICINITY. SHOULD THESE LINES BE DAMAGED BY THE CONTRACTOR'S OPERATIONS, THE CONTRACTOR SHALL REPAIR THEM TO THE SATISFACTION OF, AND AT NO COST TO, THE LOCAL AGENCY AND THE STATE.
- G.N.- 814 THE PROPOSED HANDHOLE LOCATIONS SHALL BE LOCATED BY THE ENGINEER.

MISC. ELECTRICAL GENERAL NOTES

- THE CONTRACTOR IS RESPONSIBLE FOR UNCOVERING OR HAND DIGGING AROUND UTILITIES AS NECESSARY. THE COST OF THIS WORK IS TO BE INCLUDED WITH THE APPLICABLE UNDERGROUND CONDUIT OR UNIT DUCT PAY ITEM.

INDEX OF SHEETS

SHEET NO.	DESCRIPTION
1.	COVER SHEET
2.	GENERAL NOTES, INDEX OF SHEETS AND LIST OF STANDARDS
3. - 4.	SUMMARY OF QUANTITIES
5.	SCHEDULE OF QUANTITIES
6. - 8.	PLAN SHEETS
9.	SIGN PANEL DETAIL

LIST OF STANDARDS

STANDARD NO.	NAME OF STANDARD
000001-06	STANDARD SYMBOLS, ABBREVIATIONS AND PATTERNS
001006	DECIMAL OF AN INCH AND OF A FOOT
701101-05	OFF-ROAD OPERATIONS, MULTILANE, 15' TO 24" FROM PAVEMENT EDGE
701106-02	OFF-ROAD OPERATIONS, MULTILANE, MORE THAN 15' AWAY
701400-09	APPROACH TO LANE CLOSURE, FREEWAY/EXPRESSWAY
701406-11	LANE CLOSURE, FREEWAY/EXPRESSWAY, DAY OPERATIONS ONLY
701701-10	URBAN LANE CLOSURE, MULTILANE INTERSECTION
701901-06	TRAFFIC CONTROL DEVICES
720001-01	SIGN PANEL MOUNTING DETAILS
720006-04	SIGN PANEL ERECTION DETAILS
805001-01	ELECTRICAL SERVICE INSTALLATION DETAILS
814001-03	HANDHOLES
814006-02	DOUBLE HANDHOLES
880001-01	SPAN WIRE MOUNT SIGNALS & FLASHING BEACON INSTALLATION
886001-01	DETECTOR LOOP INSTALLATIONS
886006-01	TYPICAL LAYOUT FOR DETECTION LOOPS

FILE NAME =	USER NAME = pler-somb-	DESIGNED -	REVISED -	STATE OF ILLINOIS DEPARTMENT OF TRANSPORTATION	GENERAL NOTES, INDEX OF SHEETS & LIST OF STANDARDS	F.A.P. RTE.	SECTION	COUNTY	TOTAL SHEETS	SHEET NO.
p:\ILL204EB\INTEG\Illinois.gov\PH\DOT\Documents\DOT Offices\District 5\Projects\057\DRAWING>Data\Geometrics\0570C53-shr-cover	DRAWN	CHECKED	REVISED	SCALE:	SHEET 1 OF 1 SHEETS	322	EST-10JSG	MCLEAN	9	2
#MODELNAME#	PLOT SCALE = 40.0000' / in.	DATE	REVISED	STA. TO STA.		[ILLINOIS] FED. AID PROJECT				
	PLOT DATE = 3/16/2017									

SUMMARY OF QUANTITIES

90% FEDERAL
10% STATE

LOCATION OF WORK:

FAP 322

RURAL ✓

MCLEAN COUNTY

FUNDING BREAKOUT:

CONSTRUCTION TYPE CODE:

0021 ✓

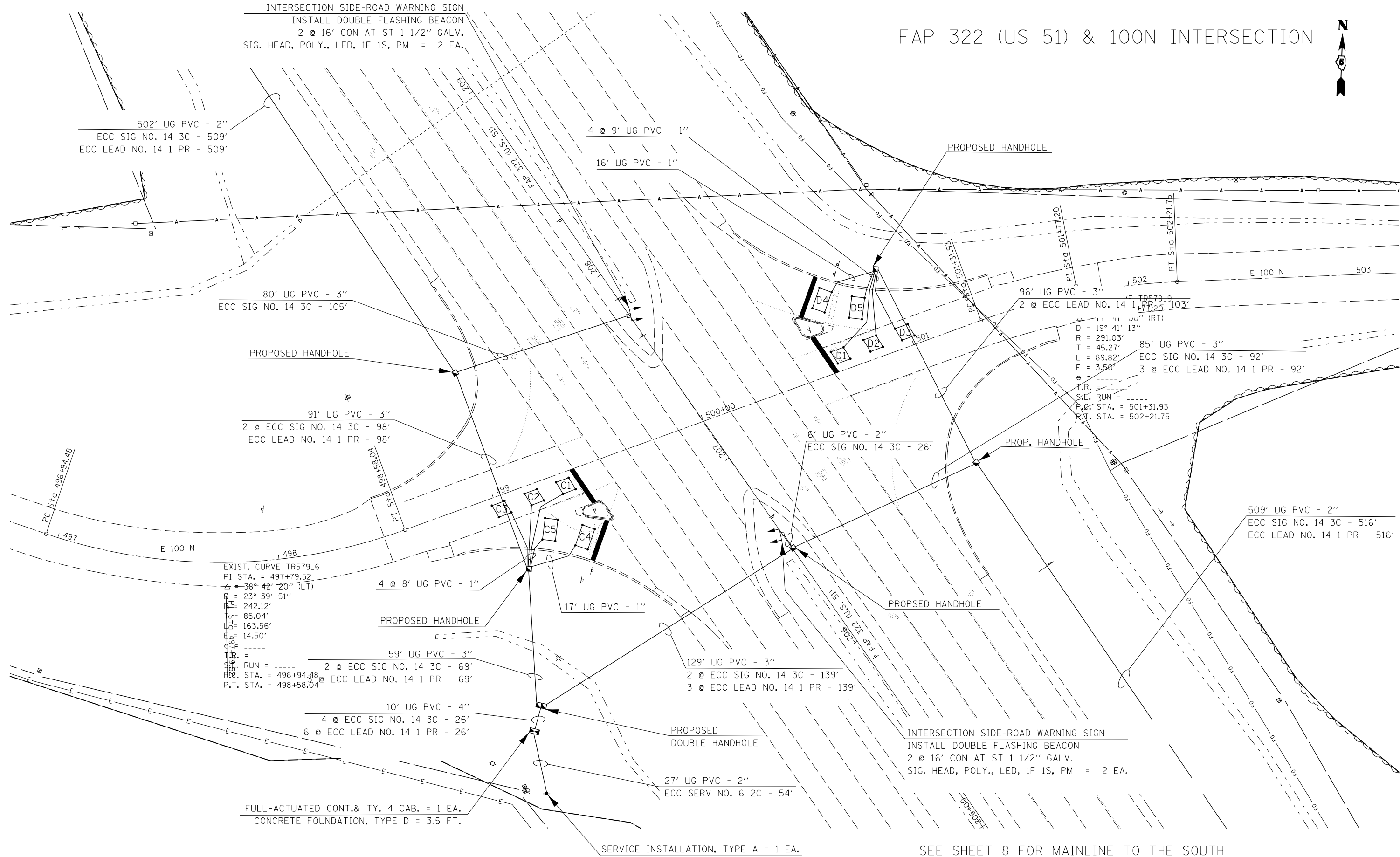
CODE NO.	ITEM	UNIT	TOTAL QUANTITY	LOCATION QUANTITY
67100100	MOBILIZATION	LSUM	1.0	1.0
70100700	TRAFFIC CONTROL AND PROTECTION, STANDARD 701406	LSUM	1.0	1.0
70102635	TRAFFIC CONTROL AND PROTECTION, STANDARD 701701	LSUM	1.0	1.0
* 72000100	SIGN PANEL, TYPE 1	SQ FT	22.5	22.5
* 72000200	SIGN PANEL, TYPE 2	SQ FT	96.0	96.0
* 73000100	WOOD SIGN SUPPORT	FOOT	96.0	96.0
80500100	SERVICE INSTALLATION, TYPE A	EACH	1.0	1.0
81028320	UNDERGROUND CONDUIT, PVC, 1" DIA.	FOOT	121.0	121.0
81028350	UNDERGROUND CONDUIT, PVC, 2" DIA.	FOOT	1668.0	1668.0
81028370	UNDERGROUND CONDUIT, PVC, 3" DIA.	FOOT	540.0	540.0
81028390	UNDERGROUND CONDUIT, PVC, 4" DIA.	FOOT	10.0	10.0
81100500	CONDUIT ATTACHED TO STRUCTURE, 1 1/2" DIA., GALVANIZED STEEL	FOOT	128.0	128.0
81400100	HANDHOLE	EACH	7.0	7.0
81400300	DOUBLE HANDHOLE	EACH	1.0	1.0

* DENOTES SPECIALTY ITEM

M

SEE SHEET 7 FOR MAINLINE TO THE NORTH

FAP 322 (US 51) & 100N INTERSECTION



INTERSECTION SIDE-ROAD WARNING SIGN
 INSTALL DOUBLE FLASHING BEACON
 2 @ 16' CON AT ST 1 1/2" GALV.
 SIG. HEAD, POLY., LED, 1F 1S, PM = 2 EA.

96' UG PVC - 3"
 2 @ ECC LEAD NO. 14 1 PR - 103'
 D = 19° 41' 13"
 R = 291.03'
 T = 45.27'
 L = 89.82'
 E = 3.50'
 S.E. RUN = -----
 P.C. STA. = 501+31.93
 P.T. STA. = 502+21.75

EXIST. CURVE TR579.6
 PI STA. = 497+79.52
 Δ = 38° 42' 20" (LT)
 R = 23° 39' 51"
 PC = 242.12'
 PT = 85.04'
 L = 163.56'
 E = 14.50'
 S.E. RUN = -----
 P.C. STA. = 496+94.48
 P.T. STA. = 498+58.04

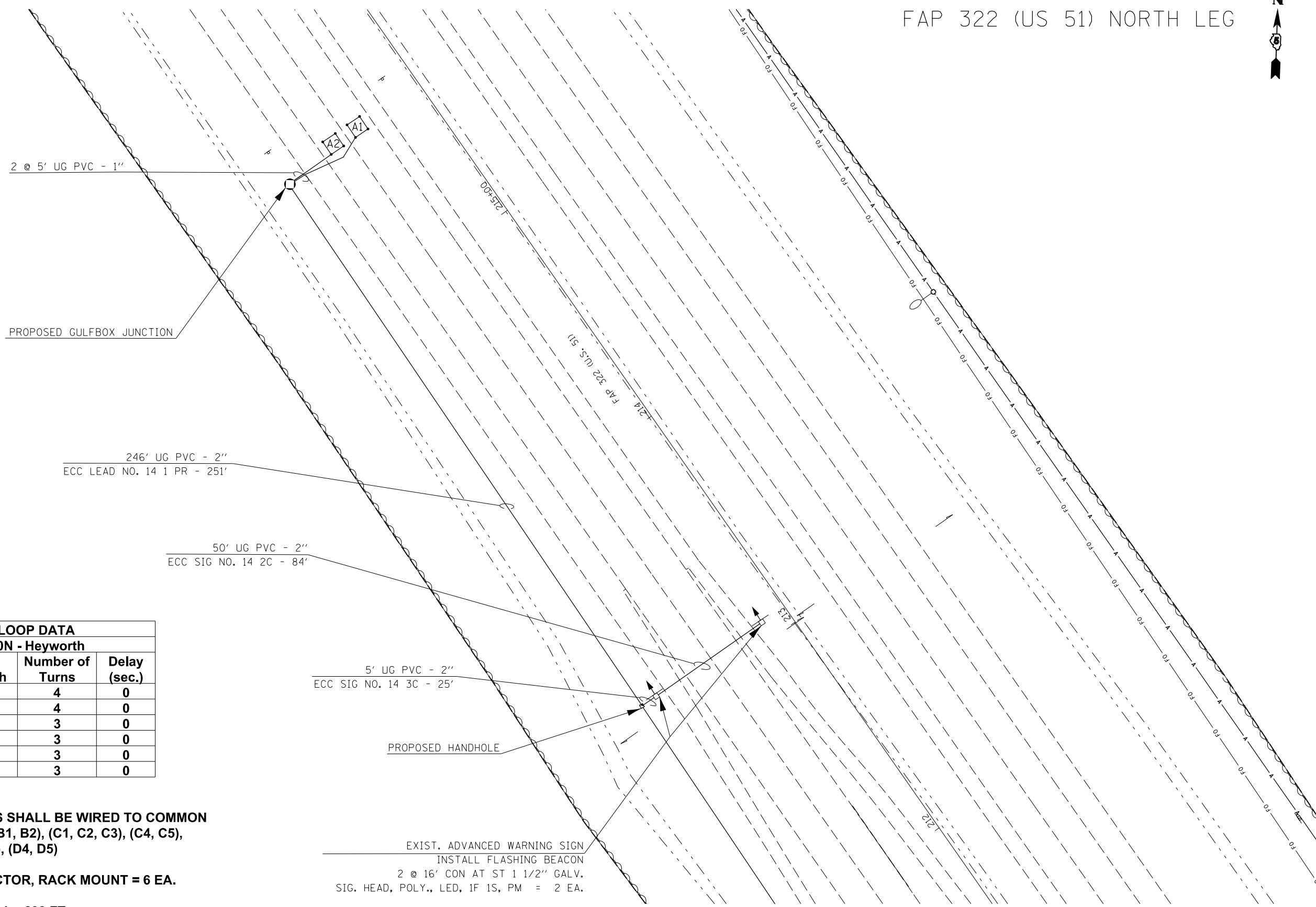
INTERSECTION SIDE-ROAD WARNING SIGN
 INSTALL DOUBLE FLASHING BEACON
 2 @ 16' CON AT ST 1 1/2" GALV.
 SIG. HEAD, POLY., LED, 1F 1S, PM = 2 EA.

FULL-ACTUATED CONT. & TY. 4 CAB. = 1 EA.
 CONCRETE FOUNDATION, TYPE D = 3.5 FT.

SERVICE INSTALLATION, TYPE A = 1 EA.

SEE SHEET 8 FOR MAINLINE TO THE SOUTH

FILE NAME =	USER NAME = piersonbr	DESIGNED -	REVISED -	STATE OF ILLINOIS DEPARTMENT OF TRANSPORTATION	FAP 322 (US 51) & 100N INTERSECTION PLAN SHEET	F.A.P. RTE.	SECTION	COUNTY	TOTAL SHEETS	SHEET NO.	
pw:\IL\084EBIDINTEG\Illinois.gov\PIWIDOT\Documents\IDOT Offices\District 5\Projects\057\CDRAWING\Design\70C53 - plan sheets.dgn	PLLOT SCALE = 40.0000' / in.	CHECKED -	REVISED -			322	[57-11]JSG	MCLEAN	9	6	
#MODELNAME#	PLLOT DATE = 3/16/2017	DATE -	REVISED -			CONTRACT NO. 70C53					
						ILLINOIS FED. AID PROJECT					



DETECTOR LOOP DATA				
U.S. 51 & E100N - Heyworth				
Loop	Length	Width	Number of Turns	Delay (sec.)
A1-2	6	6	4	0
B1-2	6	6	4	0
C1-3	6	6	3	0
C4-5	6	10	3	0
D1-3	6	6	3	0
D4-5	6	10	3	0

THE FOLLOWING LOOPS SHALL BE WIRED TO COMMON AMPLIFIERS: (A1, A2), (B1, B2), (C1, C2, C3), (C4, C5), (D1, D2, D3), (D4, D5)

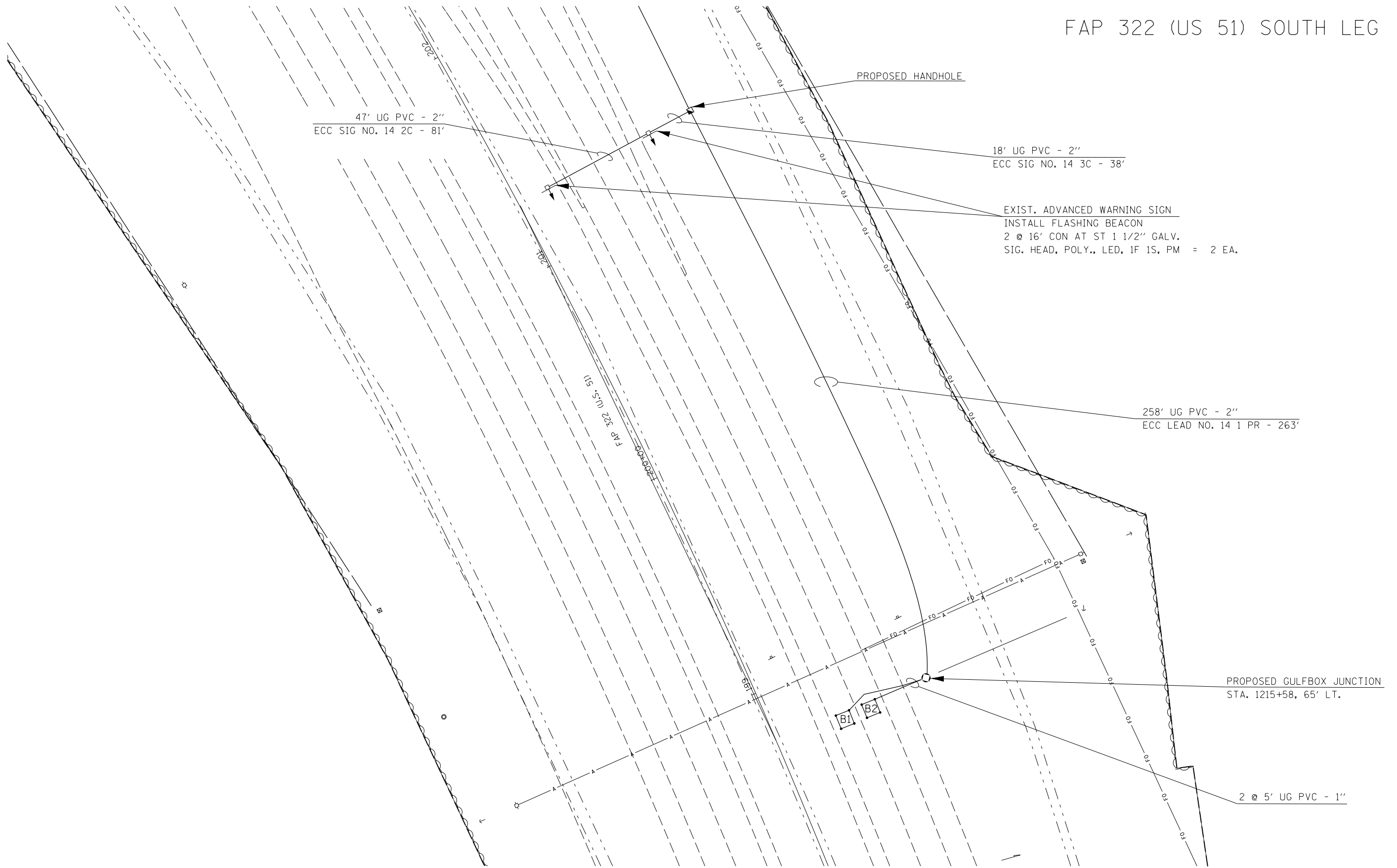
INDUCTIVE LOOP DETECTOR, RACK MOUNT = 6 EA.

DETECTOR LOOP, TYPE 1 = 600 FT.

SEE SHEET 6 FOR MAINLINE INTERSECTION

SEE SHEET 6 FOR MAINLINE INTERSECTION

FAP 322 (US 51) SOUTH LEG



FILE NAME =	USER NAME = piersonbr	DESIGNED -	REVISED -
p:\11\084EBIDINTEG.illinois.gov\PIWIDOT\Documents\IDOT Offices\District 5\Projects\0570\Drawings\Design\70C53 - plan sheets.dwg		DRAWN -	REVISED -
MODELNAME	PLOT SCALE = 40.0000' / in.	CHECKED -	REVISED -
	DATE = 3/16/2017	DATE -	REVISED -

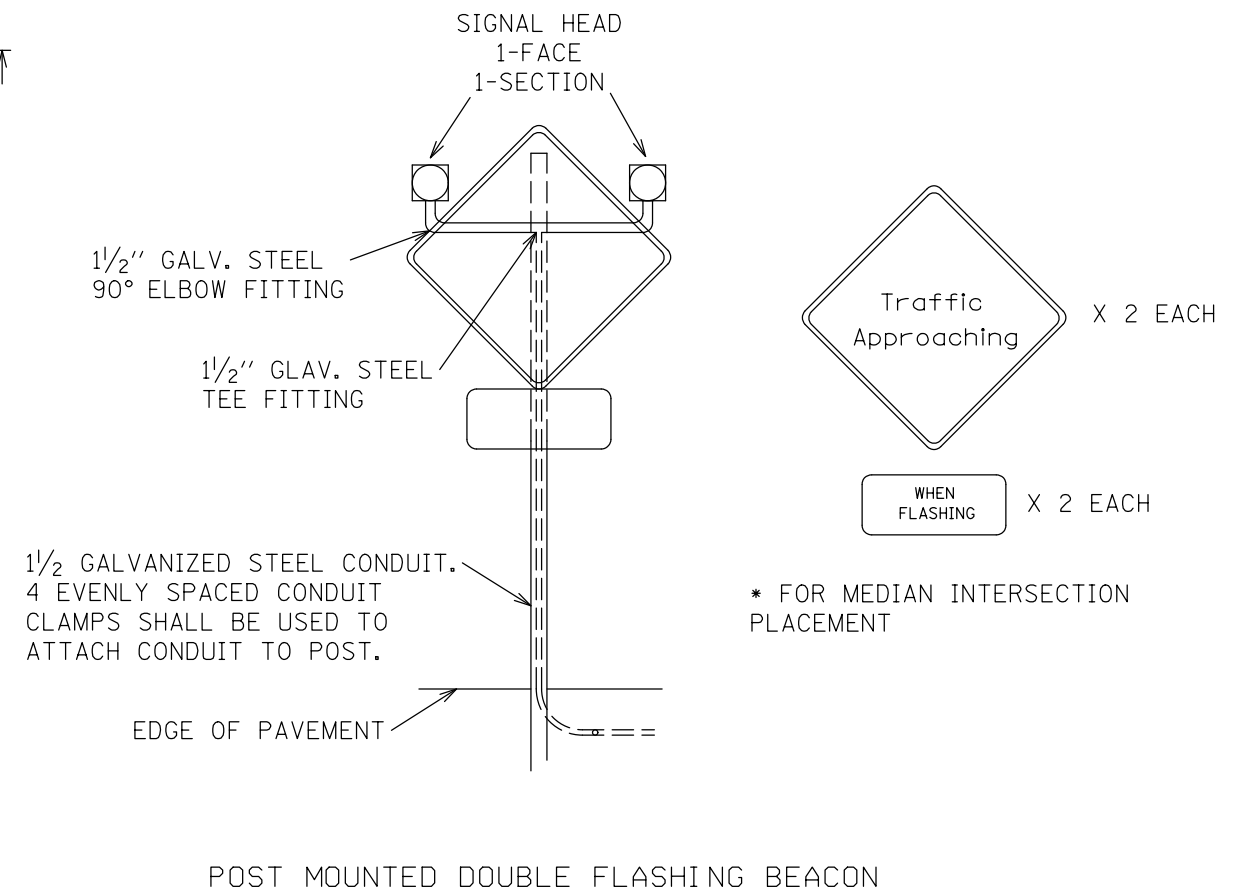
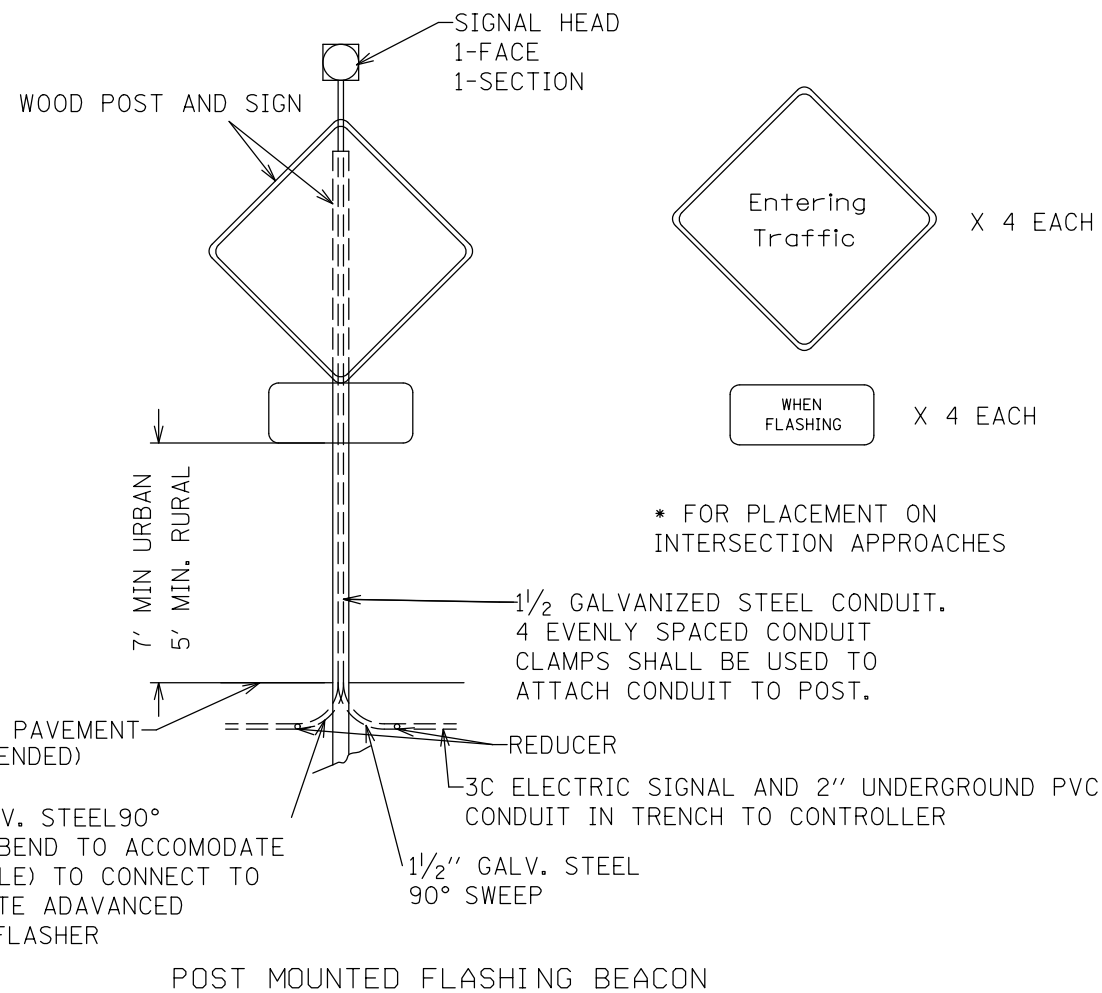
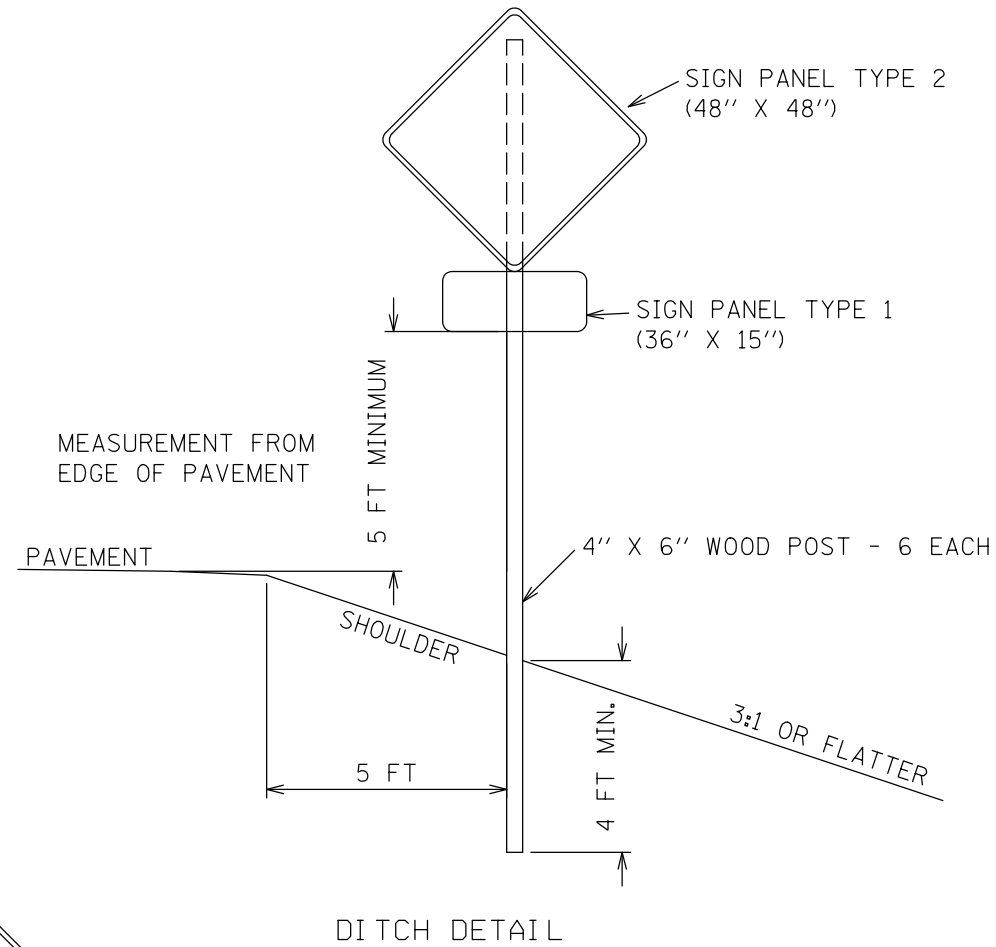
STATE OF ILLINOIS
DEPARTMENT OF TRANSPORTATION

FAP 322 (US 51) & 100N
US 51 SOUTH LEG PLAN SHEET

SCALE: SHEET 3 OF 3 SHEETS STA. TO STA.

F.A.P. RTE.	SECTION	COUNTY	TOTAL SHEETS	SHEET NO.
322	[57-1(1)]JSG	MCLEAN	9	8
CONTRACT NO. 70C53			ILLINOIS FED. AID PROJECT	

FLASHING BEACON DETAIL



FILE NAME =	USER NAME = ppersonbr	DESIGNED -	REVISED -	STATE OF ILLINOIS DEPARTMENT OF TRANSPORTATION	FLASHING BEACON DETAIL			F.A.P. RTE.	SECTION	COUNTY	TOTAL SHEETS	SHEET NO.
pw:\IL\084EBIDINTEG\illinois.gov\PIWIDOT\Documents\IDOT Offices\District 5\Projects\057\CDRAWING\Design\Detail.dgn	PLLOT SCALE = 40.0000' / in.	CHECKED -	REVISED -					322	[57-1(1)]JSG	MCLEAN	9	9
MODELNAME	PLLOT DATE = 3/16/2017	DATE -	REVISED -		SCALE: 40 SHEET 1 OF 1 SHEETS STA. TO STA.			CONTRACT NO. 70C53				
ILLINOIS FED. AID PROJECT												