

STATE OF ILLINOIS  
DEPARTMENT OF TRANSPORTATION

F.A.I. RTE.	SECTION	COUNTY	TOTAL SHEETS	SHEET NO.
55	D6 PATCHING 2017-6	SANG/MONT	8	1
		ILLINOIS	CONTRACT NO. 72J64	

FOR INDEX OF SHEETS, SEE SHEET NO. 2

# PROPOSED IMPROVEMENTS

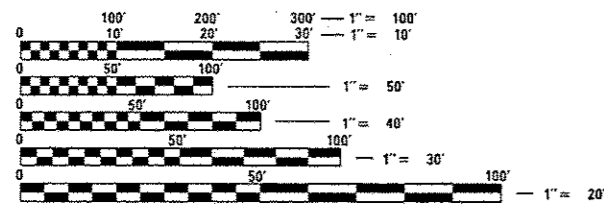
FAI 55 (I 55)  
SECTION D6 PATCHING 2017-6  
PARTIAL DEPTH PATCHING

SANGAMON/MONTGOMERY CO.

C-96-028-17



ADT = 22,400  
SU = 2,100  
MU = 4,200

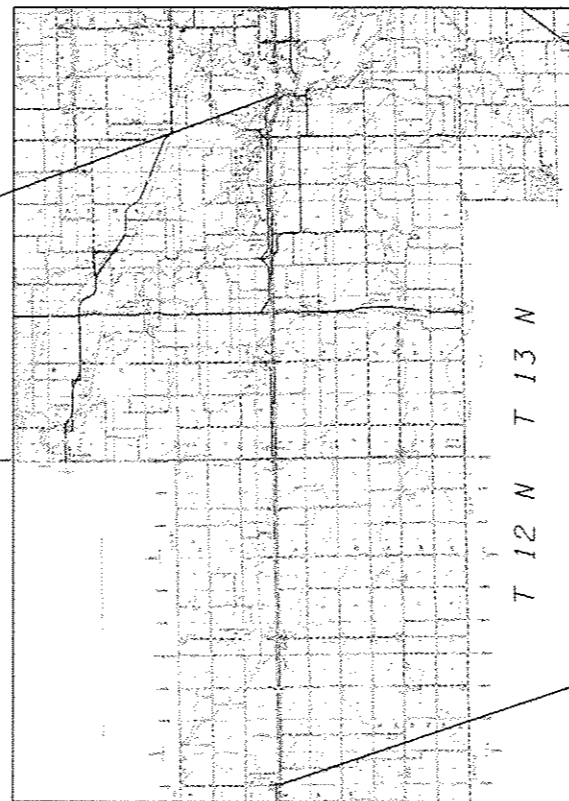


FULL SIZE PLANS HAVE BEEN PREPARED USING STANDARD ENGINEERING SCALES. REDUCED SIZED PLANS WILL NOT CONFORM TO STANDARD SCALES. IN MAKING MEASUREMENTS ON REDUCED PLANS, THE ABOVE SCALES MAY BE USED.

J.U.L.I.E.  
JOINT UTILITY LOCATION INFORMATION FOR EXCAVATION  
1-800-892-0123  
OR 811

END PROJECT  
M.P. 84.2

SANGAMON CO.  
MONTGOMERY CO.



BEGIN PROJECT  
M.P. 53.3

PROJECT ENGINEER : MIKE IRWIN - (217)524-7765  
PROJECT MANAGER : TIM SHARP - (217)524-9160

CONTRACT NO. 72J64

STATE OF ILLINOIS  
DEPARTMENT OF TRANSPORTATION

SUBMITTED 18 April 2017

*[Signature]*  
REGION FOUR ENGINEER

May 12 2017  
*[Signature]*  
ENGINEER OF DESIGN AND ENVIRONMENT

May 12 2017  
*[Signature]*  
DIRECTOR OF HIGHWAYS, CHIEF ENGINEER

PRINTED BY THE AUTHORITY  
OF THE STATE OF ILLINOIS

## INDEX OF SHEETS

SHEET NO.	DESCRIPTION
1.	COVER SHEET
2.	INDEX OF SHEETS, STANDARDS, GENERAL NOTES & SIGNATURE
3.	SUMMARY OF QUANTITIES
4-5.	PROJECT LOCATION
6.	SCHEDULE OF QUANTITIES
7-8.	PROJECT TYPICAL SECTIONS

## STANDARDS

STANDARD NO.	DESCRIPTION
701101-05	OFF-RD OPERATIONS, MULTI-LANE - <15 FT FROM EDGE OF PAVEMENT
701106-02	OFF-RD OPERATIONS, MULTI-LANE - >15 FT FROM EDGE OF PAVEMENT
701201-04	LANE CLOSURE, 2L, 2W, DAY ONLY, FOR SPEEDS > 45 MPH
701301-04	LANE CLOSURE, 2L, 2W, SHORT TERM OPERATIONS-
701306-03	LANE CLOSURE, 2L, 2W, SLOW MOVING OPERATIONS DAY ONLY, FOR SPEED > 45 MPH
701311-03	LANE CLOSURE, 2L, 2W, MOVING OPERATIONS, DAY ONLY
701400-09	APPROACH TO LANE CLOSURE, FREEWAY/EXPRESSWAY
701401-10	LANE CLOSURE, FREEWAY/EXPRESSWAY
701411-09	LANE CLOSURE, MULTI-LANE AT ENTRANCE OR EXIT RAMP, FOR SPEEDS >45 M.P.H.
701446-08	TWO LANE CLOSURE FREEWAY/EXPRESSWAY
701456-04	PARTIAL EXIT RAMP CLOSURE FREEWAY/EXPRESSWAY
701901-06	TRAFFIC CONTROL DEVICES

STATE OF ILLINOIS DEPARTMENT OF TRANSPORTATION DIVISION OF HIGHWAYS DISTRICT 6	
EXAMINED	<u>March 30<sup>th</sup></u> 20 <u>17</u> <i>[Signature]</i> ENGINEER OF OPERATIONS
EXAMINED	<u>April 18<sup>th</sup></u> 20 <u>17</u> <i>[Signature]</i> ENGINEER OF PROJECT IMPLEMENTATION
EXAMINED	<u>April 14</u> 20 <u>17</u> <i>[Signature]</i> ENGINEER OF PROGRAM DEVELOPMENT

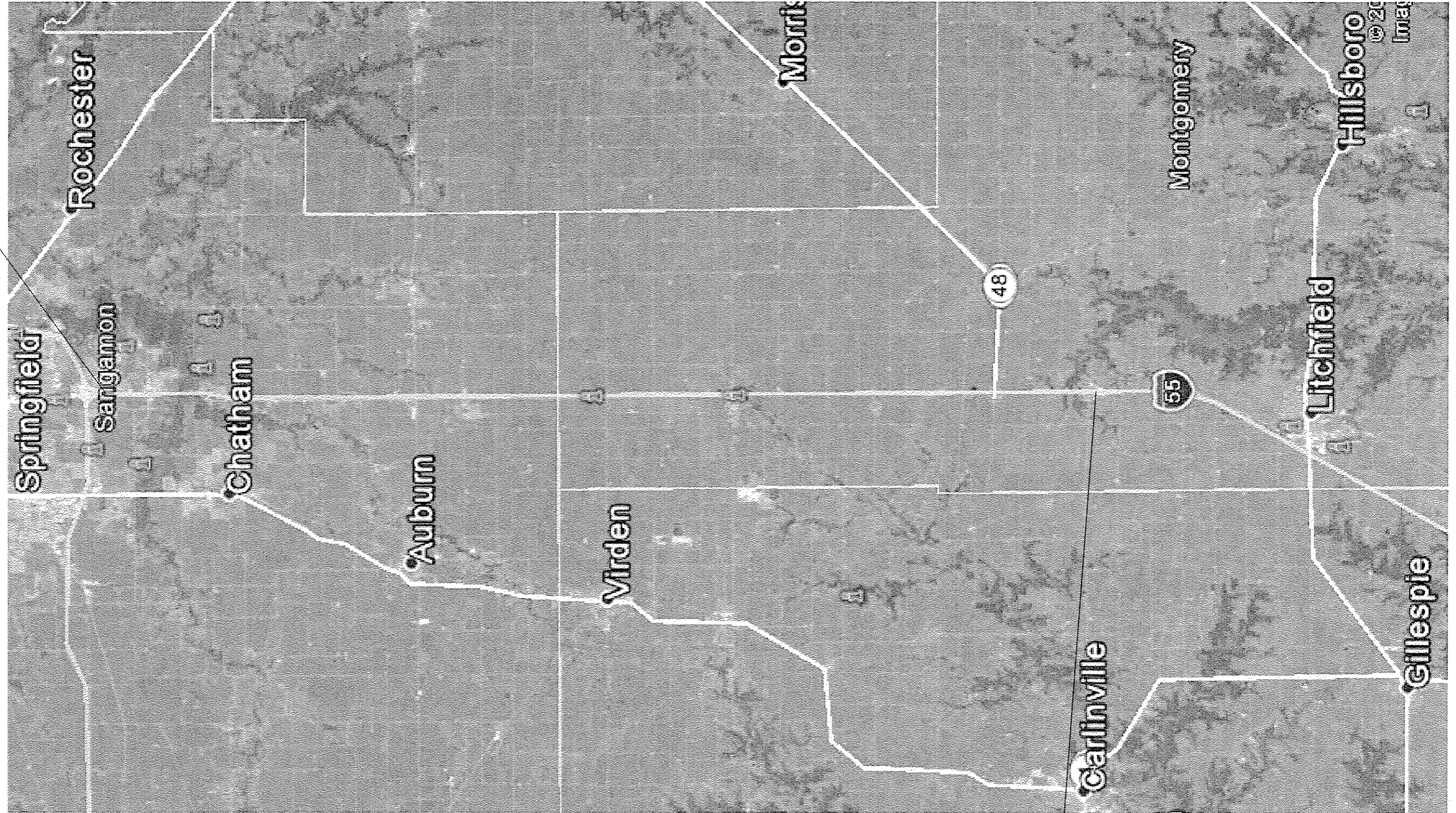
CODE NO.	ITEM	UNIT	TOTAL QUANTITY	6-01014-0000	6-01014-0000
				100% STATE SANGAMON, ROADWAY 0004 RURAL	100% STATE MONTGOMERY, ROADWAY 0004 RURAL
67100100	MOBLIZATION	L SUM	1.0	0.5	0.5
70100420	TRAFFIC CONTROL AND PROTECTION, STANDARD 701411	EACH	2.0	1.0	1.0
70100450	TRAFFIC CONTROL AND PROTECTION, STANDARD 701201	L SUM	1.0	0.0	1.0
70100460	TRAFFIC CONTROL AND PROTECTION, STANDARD 701306	L SUM	1.0	0.0	1.0
70100800	TRAFFIC CONTROL AND PROTECTION, STANDARD 701401	L SUM	1.0	0.5	0.5
70100815	TRAFFIC CONTROL AND PROTECTION, STANDARD 701446	L SUM	1.0	0.5	0.5
70100825	TRAFFIC CONTROL AND PROTECTION, STANDARD 701456	L SUM	1.0	0.5	0.5
70103815	TRAFFIC CONTROL SURVEILLANCE	CAL DA	15.0	8.0	7.0
70200100	NIGHTTIME WORK ZONE LIGHTING	L SUM	1.0	0.5	0.5
X4421000	PARTIAL DEPTH PATCHING	TON	331	147	184
X4406240	PARTIAL DEPTH REMOVAL, TYPE II, 4"	SQ YD	200	80	120
X4406440	PARTIAL DEPTH REMOVAL, TYPE III, 4"	SQ YD	160.0	80.0	80.0
X4406640	PARTIAL DEPTH REMOVAL, TYPE IV, 4"	SQ YD	1113.3	493.3	620
X7010410	SPEED DISPLAY TRAILER	CAL MO	1	0.5	0.5
X7015005	CHANGEABLE MESSAGE SIGN	CAL DA	30.0	15.0	15.0

MIXTURE REQUIREMENTS	
THE FOLLOWING MIXTURE REQUIREMENTS ARE APPLICABLE FOR THIS PROJECT	
MIXTURE USE(S):	PARTIAL DEPTH PATCHING
AC/PG:	PG 64-22
DESIGN AIR VOIDS:	4.0% @ N90
MIXTURE COMPOSITION:	IL 9.5
FRICTION AGGREGATE:	MIX D
QUALITY MANAGEMENT:	QC/QA
SUBLOT SIZE:	N/A

REV



BEGIN PROJECT



END PROJECT

FILE NAME *	USER NAME *	DESIGNED -	REVISED -
S:\CONTRACT\MINT.CAD\72J64 - 1-55 PARTIAL	sharpd	_____	_____
DEPTH PATCHES\PLANS\72J64 - SMT-4-5 - PLAN	DRAWN -	_____	_____
PLOT SCALE * 40.0000' / in.	CHECKED -	_____	_____
Default	DATE -	_____	_____
	PLOT DATE * 4/18/2017	_____	_____

STATE OF ILLINOIS  
DEPARTMENT OF TRANSPORTATION

LOCATION MAP

SCALE: \_\_\_\_\_ SHEET \_\_\_\_\_ OF \_\_\_\_\_ SHEETS STA. \_\_\_\_\_ TO STA. \_\_\_\_\_

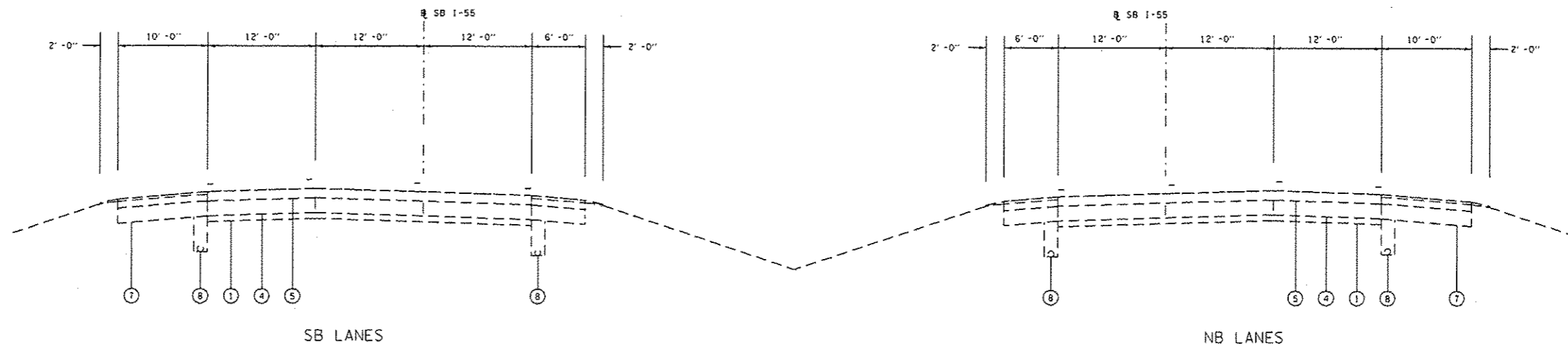
F.A.I. RTE.	SECTION	COUNTY	TOTAL SHEETS	SHEET NO.
55	D6 PATCHING 2017-6	SANG/MONT	8	4
CONTRACT NO. 72J64			ILLINOIS FED. AID PROJECT	



IL 48 PATCH LOCATIONSII

FILE NAME *	USER NAME * sharpid	DESIGNED -	REVISED -	<b>STATE OF ILLINOIS DEPARTMENT OF TRANSPORTATION</b>	<b>LOCATION MAP</b>	F.A.I. RTE.	SECTION	COUNTY	TOTAL SHEETS	SHEET NO.	
S:\CONTRACTS\72J64 - I-55 PARTIAL	DEPTH PATCHES\PLANS\72J64 - SHI-4-5 - PLANS	DRAWN -	REVISED -			55	D6 PATCHING 2017-6	SANG/MONT	8	5	
Default	PLOT SCALE * 40.0000 ' / in.	CHECKED -	REVISED -			SCALE: _____ SHEET _____ OF _____ SHEETS STA. _____ TO STA. _____					
	PLOT DATE * 4/19/2017	DATE -	REVISED -			ILLINOIS FED. AID PROJECT CONTRACT NO. 72J64					

PARTIAL DEPTH PATCHES								
LANE	MILE MARKER	WIDTH (FT)	LENGTH (FT)	AREA (S.Y.)	TYPE II	TYPE III	TYPE IV	NOTES
I-55 NORTHBOUND MONTGOMERY COUNTY								
NBDL	53.3	12.0	30.0	40.0	40.0	--	--	Butt Joint
NBPL	53.3	12.0	60.0	80.0	--	80.0	--	Butt Joint
NBPL	53.7	12.0	30.0	40.0	40.0	--	--	Butt Joint
NBPL	56.4	12.0	30.0	40.0	40.0	--	--	
I-55 SOUTHBOUND SANGAMON COUNTY								
SBDL	84.2	12.0	140.0	186.7	--	--	186.7	
SBML	84.2	12.0	80.0	106.7	--	--	106.7	Bridge Approach
SBPL	84.2	12.0	60.0	80.0	--	80.0	--	Bridge Approach
SBDL	84.1	12.0	150.0	200.0	--	--	200.0	Bridge Approach
SBML	84.1	12.0	30.0	40.0	40.0	--	--	Bridge Departure
SBPL	84.1	12.0	30.0	40.0	40.0	--	--	Bridge Departure
I-55 SOUTHBOUND MONTGOMERY COUNTY								
SBPL	57.1	12.0	80.0	106.7	--	--	106.7	
SBPL	57.1	12.0	100.0	133.3	--	--	133.3	
IL 48 MONTGOMERY COUNTY								
IL 48 EBDL		12.0	80.0	106.7	--	--	106.7	
IL 48 EBPL		12.0	80.0	106.7	--	--	106.7	
IL 48 WBTL		15.0	100.0	166.7	--	--	166.7	WB 48 TURN LANE TO 55 SB
<b>TOTAL</b>					<b>200.0</b>	<b>160.0</b>	<b>1113.3</b>	



FAI 55  
THREE LANE SECTION

LEGEND

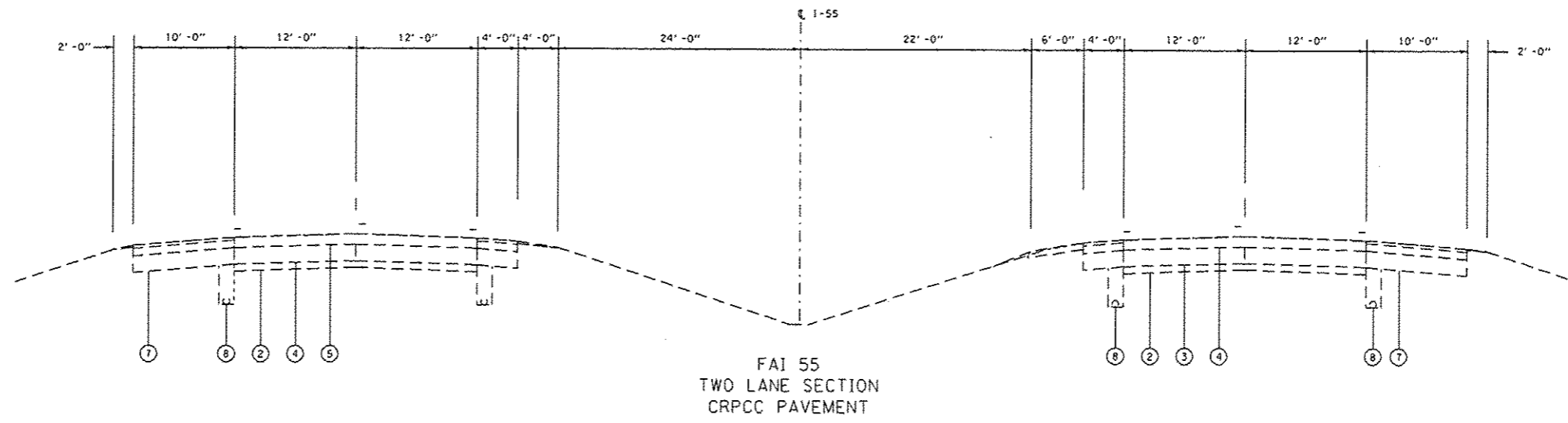
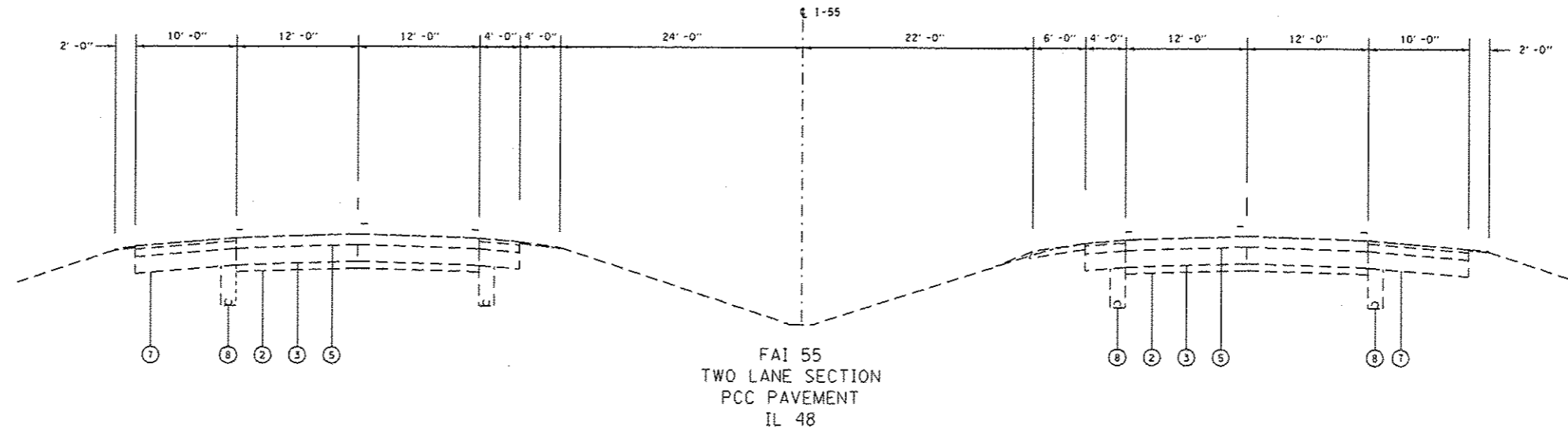
- ① EX STABILIZED SUB-BASE 4"
- ② EX AGGREGATE SUB-BASE 4"
- ③ EX PCC PAVEMENT 10"
- ④ EX CRPCC PAVEMENT
- ⑤ EX HOT-MIX ASPHALT SURFACE COURSE (VARIABLE THICKNESS)
- ⑥ EX AGGREGAE SHOULDERS
- ⑦ EX HOT-MIX ASPHALT SHOULDERS
- ⑧ EX PIPE UNDERDRAIN

FILE NAME *	USER NAME * ahorptd	DESIGNED -	REVISED -
S:\CONTRMINT.CAD\72J64 - I-55 PARTIAL	DEPTH PATCHES\PLANS\72J64 - SMT-7 - TYPICAL	DRAWN -	REVISED -
Defaults	PLOT SCALE * 15.0000' / in.	CHECKED -	REVISED -
	PLOT DATE * 3/29/2017	DATE -	REVISED -

STATE OF ILLINOIS  
DEPARTMENT OF TRANSPORTATION

TYPICALS			
SCALE:	SHEET	OF SHEETS	STA. TO STA.

F.A.I. RTE.	SECTION	COUNTY	TOTAL SHEETS	SHEET NO.
55	D6 PATCHING 2017-6	SANG/MONT	8	7
CONTRACT NO. 72J64				
ILLINOIS FED. AID PROJECT				



**LEGEND**

- ① EX STABILIZED SUB-BASE 4"
- ② EX AGGREGATE SUB-BASE 4"
- ③ EX PCC PAVEMENT 10"
- ④ EX CRPCC PAVEMENT
- ⑤ EX HOT-MIX ASPHALT SURFACE COURSE (VARIABLE THICKNESS)
- ⑥ EX AGGREGAE SHOULDERS
- ⑦ EX HOT-MIX ASPHALT SHOULDERS
- ⑧ EX PIPE UNDERDRAIN

FILE NAME *	USER NAME * sharp1td	DESIGNED -	REVISED -
S:\CONTRMAINT_CAD\72J64 - I-55 PARTIAL	DEPTH PATCHES\PLANS\72J64 - SHT-7 - TYPICAL	DRAWN -	REVISED -
Default	PLOT SCALE * 15.0000' / 1"	CHECKED -	REVISED -
	PLOT DATE * 3/29/2017	DATE -	REVISED -

**STATE OF ILLINOIS  
DEPARTMENT OF TRANSPORTATION**

**TYPICALS**

SCALE: SHEET OF SHEETS STA. TO STA.

F.A.I. RTE.	SECTION	COUNTY	TOTAL SHEETS	SHEET NO.
55	D6 PATCHING 2017-6	SANG/MONT	8	8
CONTRACT NO. 72J64			ILLINOIS FED. AID PROJECT	