

STATE OF ILLINOIS
DEPARTMENT OF TRANSPORTATION

F.A.I. RTE.	SECTION	COUNTY	TOTAL SHEETS	SHEET NO.
55	99-2AC-3-R(16)	WILL	21	1
		ILLINOIS	CONTRACT NO. 62C88	

FOR INDEX OF SHEETS, SEE SHEET NO. 2

PROPOSED HIGHWAY PLANS

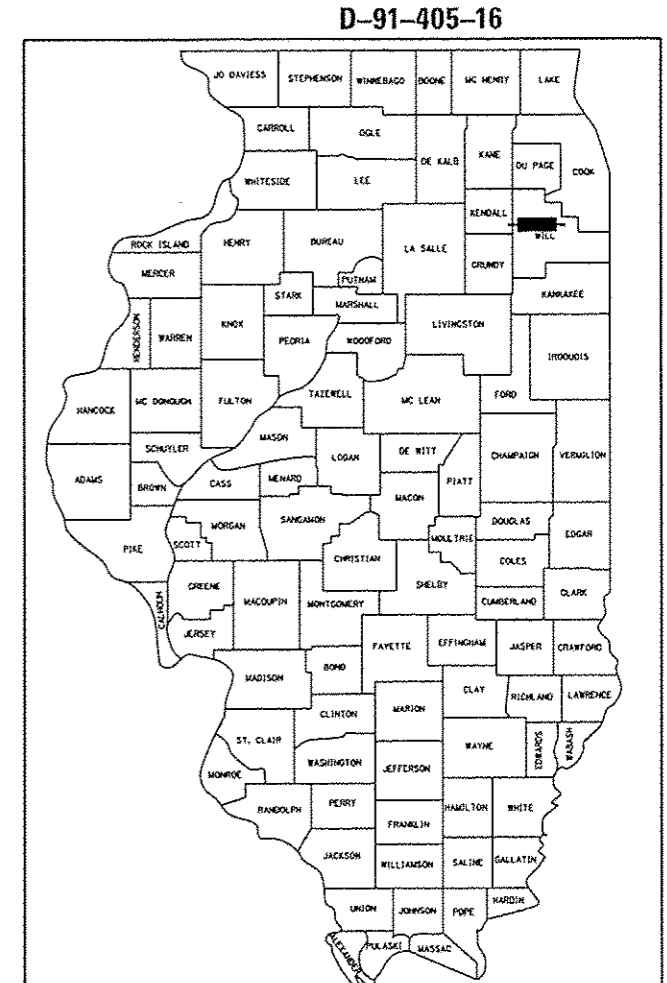
FAI 55 (I-55 EAST FRONTAGE ROAD)
SOUTH OF BLACK ROAD
RECONSTRUCTION AND WIDENING
SECTION 99-2AC-3-R(16)
PROJECT HSIP-0055(459)
WILL COUNTY
C-91-405-16

TRAFFIC DATA

ADT:
EAST FRONTAGE ROAD 5,600 VPD (2014)
9,000 VPD (2040)

POSTED SPEED LIMIT

EAST FRONTAGE ROAD 45 MPH (POSTED)
30 MPH (DESIGN)



LOCATION OF SECTION INDICATED THUS: -

PROFESSIONAL ENGINEER'S SIGN & SEAL

B. D. Hartman



BENJAMIN D. HARTMAN, P.E.
EXPIRES: 11-30-17

STATE OF ILLINOIS
DEPARTMENT OF TRANSPORTATION

SUBMITTED *April 3 2017*
Anthony J. Ruffolo
REGIONAL ENGINEER

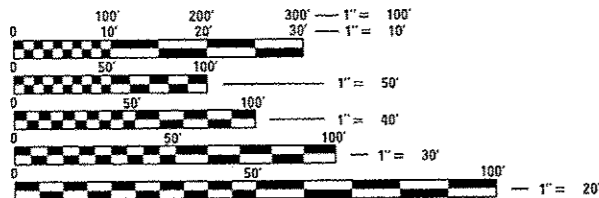
May 12 2017
Maureen M. Addis
ENGINEER OF DESIGN AND ENVIRONMENT

May 12 2017
Paula G. [Signature]
DIRECTOR OF PROGRAM DEVELOPMENT

PROJECT LOCATED IN THE
CITY OF JOLIET AND
VILLAGE OF SHOREWOOD



420 NORTH FRONT STREET, SUITE 100 | McHENRY, ILLINOIS 60050
Phone: 815.385.1776 | Toll Free: 800.728.7805 | Fax: 815.385.1781 | HRGreen.com
ILLINOIS PROFESSIONAL DESIGN FIRM #164-001322

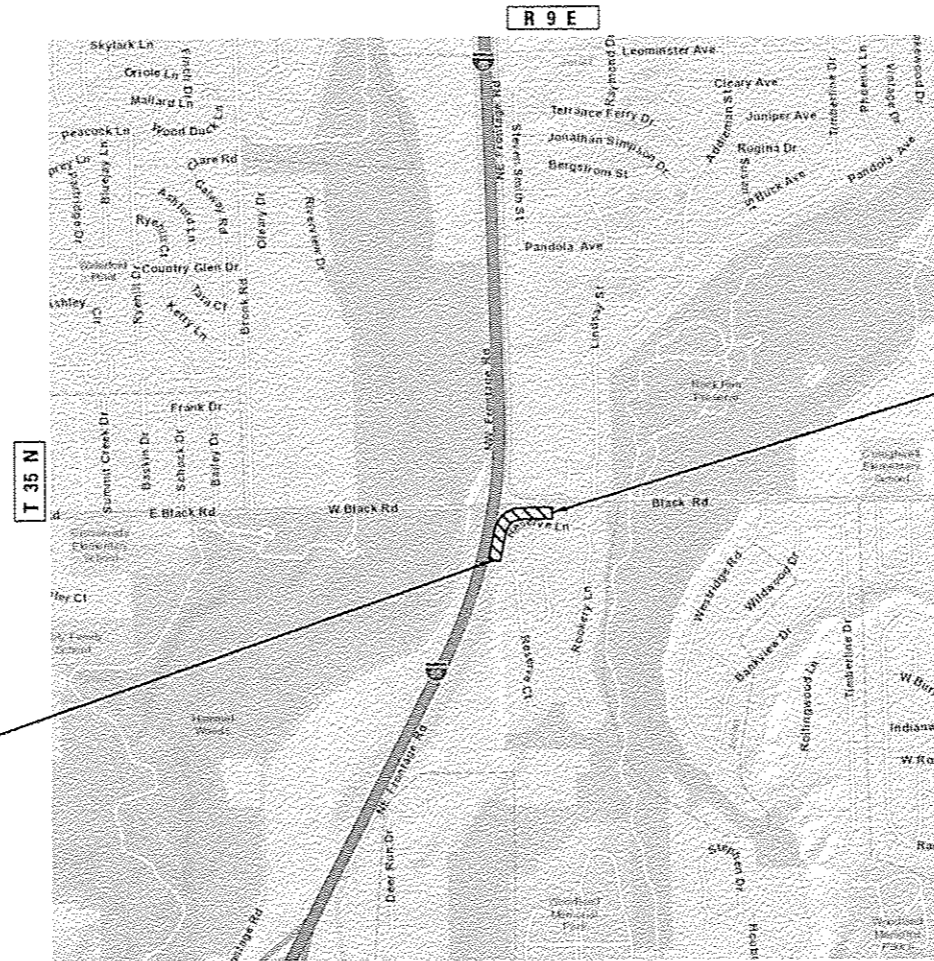


FULL SIZE PLANS HAVE BEEN PREPARED USING STANDARD ENGINEERING SCALES. REDUCED SIZED PLANS WILL NOT CONFORM TO STANDARD SCALES. IN MAKING MEASUREMENTS ON REDUCED PLANS, THE ABOVE SCALES MAY BE USED.

J.U.L.I.E.
JOINT UTILITY LOCATION INFORMATION FOR EXCAVATION
1-800-892-0123
OR 811

PROJECT ENGINEER: BEN HARTMAN 815-385-1778
PROJECT MANAGER: KARI SMITH 847-705-4437

CONTRACT NO. 62C88



PROJECT BEGINS
STA. 241 + 50.00

PROJECT ENDS
STA. 251 + 00.00

TROY TOWNSHIP
GROSS LENGTH = 950.0 FT. = 0.180 MILE
NET LENGTH = 950.0 FT. = 0.180 MILE

INDEX OF SHEETS

- 1 TITLE SHEET
- 2-3 INDEX OF SHEETS, LIST OF STATE STANDARDS, AND GENERAL NOTES
- 4-5 SUMMARY OF QUANTITIES
- 6-7 TYPICAL SECTIONS
- 8 ALIGNMENT, TIES AND BENCHMARKS
- 9 REMOVAL PLAN
- 10 ROADWAY PLAN AND PROFILE
- 11 DETOUR PLAN
- 12 EROSION CONTROL PLAN
- 13 DRAINAGE AND UTILITY PLAN AND PROFILE
- 14 PAVEMENT MARKING & LANDSCAPE PLAN
- 15 SUPERELEVATION TRANSITION DIAGRAMS
- 16 DISTRICT ONE TYPICAL PAVEMENT MARKINGS (TC 13)
- 17 ARTERIAL ROAD INFORMATION SIGN (TC 22)
- 18-21 CROSS SECTIONS - EAST FRONTAGE ROAD

LIST OF STATE STANDARDS

STANDARD NO.	DESCRIPTION
000001-06	STANDARD SYMBOLS, ABBREVIATIONS AND PATTERNS
602001-02	CATCH BASIN, TYPE A
602301-04	INLET, TYPE A
604091-03	FRAME AND GRATE, TYPE 24
606001-06	CONCRETE CURB TYPE B AND COMBINATION CONCRETE CURB AND GUTTER
701006-05	OFF-ROAD OPERATIONS, 2L, 2W, 15' (4.5 m) TO 24" (600 mm) FROM PAVEMENT EDGE
701011-04	OFF-ROAD MOVING OPERATIONS, 2L, 2W, DAY ONLY
701301-04	LANE CLOSURE, 2L, 2W, SHORT TIME OPERATIONS
701311-03	LANE CLOSURE, 2L, 2W, MOVING OPERATIONS-DAY ONLY
701501-06	URBAN LANE CLOSURE, 2L, 2W, UNDIVIDED
701901-06	TRAFFIC CONTROL DEVICES
704001-08	TEMPORARY CONCRETE BARRIER
720001-01	SIGN PANEL MOUNTING DETAILS
720006-04	SIGN PANEL ERECTION DETAILS
720011-01	METAL POSTS FOR SIGNS, MARKERS & DELINEATORS


GENERAL NOTES

1. BEFORE STARTING ANY EXCAVATION, THE CONTRACTOR SHALL CALL "JULIE" (JOINT UTILITY LOCATION INFORMATION FOR EXCAVATION) AT 8-1-1 OR (800) 892-0123 FOR FIELD LOCATIONS OF BURIED ELECTRIC, TELEPHONE, AND GAS FACILITIES (48 HOUR NOTIFICATION IS REQUIRED).
2. THE CONTRACTOR SHALL BE RESPONSIBLE FOR CONTACTING THE OWNERS OF ALL UTILITIES PRIOR TO CONSTRUCTION TO DETERMINE THE LOCATION OF ALL UTILITY EQUIPMENT. THE CONTRACTOR SHALL COOPERATE WITH ALL UTILITY OWNERS IN ACCORDANCE WITH THE STANDARD SPECIFICATIONS IF UTILITY RELOCATION, ADJUSTMENT, OR PROTECTION IS NECESSARY.
3. THE CONTRACTOR SHALL COORDINATE CONSTRUCTION ACTIVITIES WITH UTILITY COMPANIES, VILLAGE OF SHOREWOOD, AND CITY OF JOLIET.
4. THE LOCATION OF EXISTING DRAINAGE STRUCTURES, STORM SEWERS, WATER MAINS, SANITARY SEWERS, AND ANY OTHER PUBLIC OR PRIVATE UTILITIES AS SHOWN ON THE PLANS IS APPROXIMATE AND THEIR EXACT LOCATION IS TO BE DETERMINED IN THE FIELD BY THE CONTRACTOR.
5. THE CONTRACTOR SHALL BE RESPONSIBLE FOR THE PROTECTION OF ALL UNDERGROUND AND SURFACE UTILITIES EVEN THOUGH THEY MIGHT NOT BE SHOWN ON THE PLANS. ANY UTILITY PROPERTY DAMAGED DURING CONSTRUCTION SHALL BE REPAIRED OR REPLACED TO THE SATISFACTION OF THE ENGINEER.
6. IT IS THE CONTRACTOR'S RESPONSIBILITY TO ASCERTAIN EXISTING FIELD CONDITIONS PRIOR TO BIDDING ON THE PROJECT.
7. THE CONTRACTOR SHALL PROTECT AND CAREFULLY PRESERVE ALL SECTION OR SUBSECTION MONUMENTS, PROPERTY CORNERS, AND REFERENCE MARKERS UNTIL THE OWNER, HIS AGENT, OR AN AUTHORIZED SURVEYOR HAS WITNESSED OR OTHERWISE REFERENCED THEIR LOCATIONS.
8. WHEN ARTIFICIAL LIGHTING IS USED IN NIGHT OPERATIONS, THE CONTRACTOR SHALL EXERCISE THE UTMOST PRECAUTIONS IN PREVENTING ADVERSE VISIBILITY TO THE MOTORING PUBLIC AND ADJOINING RESIDENTIAL AREAS.
9. THE CONTRACTOR WILL NOT BE ALLOWED TO SET UP A YARD OR FIELD OFFICE ON STATE PROPERTY WITHOUT WRITTEN PERMISSION FROM THE DEPARTMENT.
10. DO NOT SCALE PLANS FOR CONSTRUCTION DIMENSIONS.
11. THE CONTRACTOR SHALL USE CARE IN REMOVING OR EXCAVATING NEAR ALL EXISTING ITEMS WHICH WILL REMAIN. ANY DAMAGE DONE TO EXISTING ITEMS BY THE CONTRACTOR SHALL BE REPAIRED AT THE CONTRACTOR'S EXPENSE.
12. PAVEMENT MARKING TAPE, TYPE III SHALL BE USED FOR SHORT TERM PAVEMENT MARKINGS AND TEMPORARY PAVEMENT MARKING ON ALL FINAL SURFACES. THE COST OF THE PAVEMENT MARKING TAPE TYPE III SHALL BE INCLUDED IN THE COST OF SHORT TERM PAVEMENT MARKINGS AND TEMPORARY PAVEMENT MARKINGS.
13. THE CONTRACTOR SHALL CONTACT THE TRAFFIC CONTROL SUPERVISOR AT (847) 705-4470 A MINIMUM OF 72 HOURS IN ADVANCE OF BEGINNING WORK.
14. MATCH EXISTING PAVEMENT MARKINGS AT THE PROJECT LIMITS.
15. ALL DAMAGE TO EXISTING PAVEMENT MARKINGS OUTSIDE THE REMOVAL LINE SHOWN ON THE PLANS SHALL BE REPLACED AT THE CONTRACTORS EXPENSE.
16. EXISTING BROKEN FRAMES AND LIDS SHALL BE REMOVED AND DISPOSED OF BY THE CONTRACTOR AND SHALL BE REPLACED AS DIRECTED BY THE ENGINEER. REPLACEMENT FRAMES AND LIDS WILL BE PAID FOR ACCORDING TO ARTICLE 109.04 OF THE STANDARD SPECIFICATIONS UNLESS A SEPARATE PAY ITEM HAS BEEN PROVIDED.
17. ALL RADII FOR PROPOSED CURB AND GUTTER ARE TO THE EDGE OF PAVEMENT, UNLESS OTHERWISE NOTED. CURB AND GUTTER ELEVATIONS SHOWN ALONG RETURNS AND AT POINTS OF CURVATURE, ETC. ARE TO THE EDGE OF PAVEMENT UNLESS OTHERWISE NOTED.
18. OFFSET LOCATIONS GIVEN IN THE PLANS FOR STRUCTURES, EDGE OF PAVEMENT, ETC. ARE FROM THE ROADWAY CENTERLINE.
19. REMOVAL OF EXISTING COMBINATION CURB AND GUTTER, REGARDLESS OF CURB AND GUTTER TYPE, SHALL BE PAID FOR AS "COMBINATION CURB AND GUTTER REMOVAL".
20. THE ELEVATIONS SHOWN ON THE PLANS ARE FINISHED GRADES OF PROPOSED PAVEMENT, UNLESS OTHERWISE NOTED.
21. THE THICKNESSES OF HOT MIX ASPHALT MIXTURES SHOWN IN THE PLANS ARE NOMINAL. DEVIATIONS MAY OCCUR DUE TO IRREGULARITIES IN THE SURFACES OR BASES ON WHICH THE HOT MIX ASPHALT MIXTURES ARE TO BE PLACED.
22. WHERE NEW WORK MEETS EXISTING FEATURES TO REMAIN, FIELD CHECK ALL DIMENSIONS AND ELEVATIONS BEFORE PROCEEDING WITH CONSTRUCTION, NOTIFY ENGINEER IMMEDIATELY OF ANY DISCREPANCIES.
23. THE INDISCRIMINATE USE OF FIRE HYDRANTS OR EXISTING STREAMS, CREEKS, WETLANDS OR PONDS IS STRICTLY PROHIBITED. THE CONTRACTOR SHALL PROVIDE A WATER TRUCK AND DRIVER AS REQUIRED TO OBTAIN AND TRANSPORT THIS WATER. THE CONTRACTOR SHALL BE RESPONSIBLE FOR OBTAINING WATER FROM AN APPROVED SOURCE. IF THIS WATER IS FROM A SOURCE OTHER THAN HIS YARD, WRITTEN APPROVAL FROM THE AGENCY HAVING JURISDICTION FOR THE SOURCE OF THE WATER MUST BE RECEIVED BY THE ENGINEER PRIOR TO USE OF THE WATER.

PLAN	DATE
BY	
REVISIONS	
NO.	DATE
1	
2	
3	
4	
5	
6	
7	
8	
9	
10	
11	
12	
13	
14	
15	
16	
17	
18	
19	
20	
21	
22	
23	
24	
25	
26	
27	
28	
29	
30	
31	
32	
33	
34	
35	
36	
37	
38	
39	
40	
41	
42	
43	
44	
45	
46	
47	
48	
49	
50	

PROFILE	DATE
BY	
REVISIONS	
NO.	DATE
1	
2	
3	
4	
5	
6	
7	
8	
9	
10	
11	
12	
13	
14	
15	
16	
17	
18	
19	
20	
21	
22	
23	
24	
25	
26	
27	
28	
29	
30	
31	
32	
33	
34	
35	
36	
37	
38	
39	
40	
41	
42	
43	
44	
45	
46	
47	
48	
49	
50	

HRG PROJECT NO.: 8660046.4
 HRG PROJ. CONTACT: D22288-ent-gsm-04.dgn
 FILE NAME: R:\D22288-ent-gsm-04.dgn
 PLOT DATE: 3/29/2017
 PLOT SCALE: NTS

	USER NAME : bhar_tna	DESIGNED -	REVISED -	STATE OF ILLINOIS DEPARTMENT OF TRANSPORTATION	INDEX OF SHEETS, STATE STANDARDS AND GENERAL NOTES	F.A.I. RTE.:	SECTION NO.	COUNTY	TOTAL SHEETS	SHEET NO.
	PLT SCALE : NTS	CHECKED -	REVISED -			55	99-ZAC-3-R(16)	WILL	21	2
	PLT DATE : 3/29/2017	DATE - 3/29/17	REVISED -			CONTRACT NO. 62C88				
SCALE: NTS SHEET NO. 1 OF 2 SHEETS STA. TO STA.						FED. ROAD DIST. NO. [ILLINOIS] FED. AID PROJECT				

GENERAL NOTES CONT.

STORM SEWERS, WATER MAINS, AND UTILITIES

1. ALL UTILITY COMPANIES SHALL BE NOTIFIED AT LEAST 3 DAYS PRIOR TO THE START OF CONSTRUCTION.
2. WHEN EXISTING DRAINAGE FACILITIES ARE DISTURBED, THE CONTRACTOR SHALL PROVIDE AND MAINTAIN, IN AN OPERATING CONDITION, TEMPORARY OUTLETS AND CONNECTIONS FOR ALL DRAINS, SEWERS, AND CATCH BASINS. THE CONTRACTOR SHALL PROVIDE FACILITIES WHICH HAVE THE CAPACITY TO RECEIVE AND DISCHARGE THE STORM WATER FLOW RATES NORMALLY ACCEPTED AND RELEASED BY THE EXISTING DRAINAGE FACILITIES.
3. FRAME ELEVATIONS GIVEN ON THE PLANS ARE ONLY TO ASSIST THE CONTRACTOR IN DETERMINING THE APPROXIMATE OVERALL HEIGHT OF THE STRUCTURE. FRAMES ON ALL NEW, ADJUSTED OR RECONSTRUCTED STRUCTURES WILL BE ADJUSTED TO THE FINAL ELEVATION OF THE AREA IN WHICH THEY ARE LOCATED.
4. PIPE UNDERDRAINS SHALL BE INSTALLED IN ACCORDANCE WITH SECTION 601 OF THE STANDARD SPECIFICATIONS AND HIGHWAY STANDARD 601001. THE TOP OF PIPE UNDERDRAINS SHALL BE PLACED MINIMUM 6" BELOW AGGREGATE SUBGRADE IMPROVEMENT LAYER. THE COST OF MAKING PIPE UNDERDRAIN CONNECTIONS TO DRAINAGE STRUCTURES SHALL BE INCLUDED IN THE COST OF PIPE UNDERDRAINS.

BACKFILL

1. FOR STORM SEWER CONSTRUCTED UNDER THE ROADWAY, BACKFILLING METHODS TWO AND THREE AUTHORIZED UNDER THE PROVISIONS OF ARTICLE 550.07 OF THE STANDARD SPECIFICATIONS WILL NOT BE ALLOWED.
2. PROVIDE TRENCH BACKFILL FOR ALL UTILITY LINES WITHIN 2' OF PAVED AREAS. ALL TRENCH BACKFILL QUANTITIES FOR STORM SEWER HAVE BEEN COMPUTED AND SHALL BE PAID FOR IN ACCORDANCE WITH THE STATE OF ILLINOIS DEPARTMENT OF TRANSPORTATION DIVISION OF HIGHWAYS BUREAU OF CONSTRUCTION TRENCH BACKFILL TABLE, BASED ON PIPE SIZE AND INVERT DEPTH FROM SUBGRADE.
3. THE PAY ITEM FOR STORM SEWER REMOVAL SHALL INCLUDE ANY TRENCH BACKFILL REQUIRED TO FILL AREA OF SEWER REMOVAL WHERE THERE IS NO REPLACEMENT. IF PROPOSED STORM SEWER IS REPLACED IN THE SAME TRENCH, THEN TRENCH BACKFILL SHALL BE PAID FOR SEPARATELY.

SIGNING AND STRIPING

1. SEE DISTRICT ONE DETAIL AND PLAN SHEETS FOR PAVEMENT MARKING DETAILS.
2. SIGNS SHALL NOT BE MOVED OR COVERED UNTIL PROGRESS OF WORK NECESSITATES IT.
3. THE CONTRACTOR WILL BE REQUIRED TO TEMPORARILY RESET ALL SUCH SIGNS THAT INTERFERE WITH HIS CONSTRUCTION OPERATIONS. ALL SUCH SIGNS MUST BE MAINTAINED STRAIGHT AND CLEAN FOR THE DURATION OF THE TEMPORARY SETTING AND MUST BE RE-ERECTED AT A TEMPORARY LOCATION IN A WORKMANLIKE MANNER AND BE VISIBLE TO THE TRAFFIC FOR WHICH IT IS INTENDED.
4. LONGER POSTS MAY BE REQUIRED AT SOME TEMPORARY OR PERMANENT SIGN LOCATIONS TO MAINTAIN PROPER SIGN ELEVATIONS. THIS WORK SHALL BE COMPLETED IN ACCORDANCE WITH SECTION 729 OF THE STANDARD SPECIFICATIONS AND INCLUDED IN THE UNIT COST OF METAL POST - TYPE B.
5. THE RESIDENT ENGINEER SHALL CONTACT WALTER CZARNY, AREA TRAFFIC FIELD ENGINEER, AT WALTER.CZARNY@ILLINOIS.GOV AT LEAST TWO (2) WEEKS PRIOR TO THE PLACEMENT OF PERMANENT PAVEMENT MARKING.

EROSION CONTROL PLANS

1. SOIL DISTURBANCE SHALL BE CONDUCTED IN SUCH A MANNER AS TO MINIMIZE EROSION. AREAS OF THE SITE THAT ARE NOT TO BE GRADED SHALL BE PROTECTED FROM CONSTRUCTION TRAFFIC OR OTHER DISTURBANCE UNTIL FINAL SEEDING IS PERFORMED.
2. PROPERTIES AND CHANNELS ADJOINING THE SITE SHALL BE PROTECTED FROM EROSION AND SEDIMENTATION.
3. SOIL EROSION AND SEDIMENT CONTROL FEATURES SHALL BE CONSTRUCTED PRIOR TO THE COMMENCEMENT OF HYDROLOGIC DISTURBANCE OF UPLAND AREAS.
4. DISTURBED AREAS SHALL BE STABILIZED WITH TEMPORARY OR PERMANENT MEASURES WITHIN ONE (1) CALENDAR DAY FOLLOWING THE END OF ACTIVE HYDROLOGIC DISTURBANCE.
5. ALL STORM SEWERS THAT ARE OR WILL BE FUNCTIONING DURING CONSTRUCTION SHALL BE PROTECTED BY AN APPROPRIATE SEDIMENT CONTROL MEASURE.
6. IF DEWATERING SERVICES ARE USED, ADJOINING PROPERTIES AND DISCHARGE LOCATIONS SHALL BE PROTECTED FROM EROSION. DISCHARGES SHALL BE ROUTED THROUGH AN EFFECTIVE SEDIMENT CONTROL MEASURE (E.G. SEDIMENT TRAP, SEDIMENT BASIN, OR OTHER APPROPRIATE MEASURE).
7. ALL TEMPORARY SOIL EROSION AND SEDIMENT CONTROL MEASURES SHALL BE REMOVED WITHIN THIRTY (30) DAYS AFTER FINAL SITE STABILIZATION IS ACHIEVED OR AFTER THE TEMPORARY MEASURES ARE NO LONGER NEEDED. TRAPPED SEDIMENT AND OTHER DISTURBED SOIL AREAS SHALL BE PERMANENTLY STABILIZED.

GENERAL NOTES CONT.

8. THE CONTRACTOR SHALL PROVIDE ADEQUATE RECEPTACLES FOR THE DEPOSITION OF ALL CONSTRUCTION MATERIAL DEBRIS GENERATED DURING THE DEVELOPMENT PROCESS. THE CONTRACTOR SHALL NOT CAUSE OR PERMIT DUMPING, DEPOSITING, DROPPING, THROWING, DISCARDING OR LEAVING OF CONSTRUCTION MATERIAL DEBRIS UPON OR INTO THE CONSTRUCTION SITE, CHANNEL, WATERS OF THE UNITED STATES. THE CONTRACTOR SHALL MAINTAIN THE CONSTRUCTION SITE FREE OF CONSTRUCTION MATERIAL DEBRIS.
9. ALL TEMPORARY AND PERMANENT EROSION AND SEDIMENT CONTROL MEASURES SHALL BE MAINTAINED IN AN EFFECTIVE WORKING CONDITION.
10. PERMANENT EROSION CONTROL SHALL INCLUDE TOPSOIL EXCAVATION AND PLACEMENT, TOPSOIL FURNISH AND PLACE, 6" AND SEEDING, CLASS 2A TO BE PROVIDED IN ACCORDANCE WITH ARTICLE 250 OF THE STANDARD SPECIFICATIONS.
11. ALL ESC MEASURES WILL BE MAINTAINED IN ACCORDANCE WITH THE IDOT EROSION AND SEDIMENT CONTROL FIELD GUIDE FOR CONSTRUCTION INSPECTION AND IDOT'S BEST MANAGEMENT PRACTICES - MAINTENANCE GUIDE: [HTTP://WWW.IDOT.ILLINOIS.GOV/TRANSPORTATION-SYSTEM/ENVIRONMENT/EROSION-AND-SEDIMENT-CONTROL/](http://www.idot.illinois.gov/TRANSPORTATION-SYSTEM/ENVIRONMENT/EROSION-AND-SEDIMENT-CONTROL/).
12. THE CONTRACTOR WILL ASSUME RESPONSIBILITY FOR MAINTENANCE OF ALL SOIL EROSION CONTROL DURING CONSTRUCTION.
13. THE CONTRACTOR SHALL CHECK ALL ESC MEASURES WEEKLY AND AFTER EACH RAINFALL, 0.5 INCHES OR GREATER IN A 24-HOUR PERIOD, OR EQUIVALENT SNOWFALL. ADDITIONALLY DURING WINTER MONTHS, ALL MEASURES SHOULD BE CHECKED BY THE CONTRACTOR AFTER EACH SIGNIFICANT SNOWMELT.
14. THE CONTRACTOR SHOULD PROVIDE TO THE RESIDENT ENGINEER A PLAN TO ENSURE THAT A STABILIZED FLOW LINE WILL BE PROVIDED DURING STORM SEWER CONSTRUCTION. THE USE OF A STABILIZED FLOW LINE BETWEEN INSTALLED STORM SEWER AND OPEN DISTURBANCE WILL REDUCE THE POTENTIAL FOR THE OFFSITE DISCHARGE OF SEDIMENT-BEARING WATERS, ESPECIALLY WHEN RAIN IS FORECASTED, SO THAT FLOW WILL NOT ERODE. LACK OF APPROVED PLAN OR FAILURE TO COMPLY WILL RESULT IN AN EROSION AND SEDIMENT CONTROL.
15. ANY LOOSE MATERIAL DEPOSITED IN THE FLOW LINE OF DRAINAGE STRUCTURES, WHICH OBSTRUCTS THE NATURAL FLOW OF WATER, SHALL BE REMOVED AT THE CLOSE OF EACH WORKING DAY, PRIOR TO ACCEPTANCE OF THE IMPROVEMENT. ALL DRAINAGE STRUCTURES SHALL BE FREE OF DIRT AND DEBRIS.
16. TEMPORARY OR PERMANENT STABILIZATION SHALL BE INITIATED IMMEDIATELY UPON COMPLETION OF DISTURBANCE OR IF THE WORK AREA IS TO BE LEFT UNDISTURBED FOR 14 DAYS OR MORE.
17. UNDER NO CIRCUMSTANCE SHALL THE CONTRACTOR PROLONG FINAL GRADING AND SHAPING SO THAT THE ENTIRE PROJECT CAN BE PERMANENTLY SEEDING AT ONE TIME.
18. EROSION CONTROL ITEMS ARE CONSIDERED TO BE A HIGH PRIORITY ON THIS CONTRACT. THE CONTRACTOR IS RESPONSIBLE FOR INSTALLATION OF ANY ADDITIONAL EROSION CONTROL MEASURES NECESSARY TO PREVENT EROSION AND SEDIMENTATION AS DETERMINED BY THE RESIDENT ENGINEER.
19. THE DEPARTMENT HAS NOT OBTAINED ANY PERMITS FOR OFFSITE BORROW, WASTE, USE (BWU) AREAS. PRIOR TO WORKING IN BWU AREAS, IF THE CONTRACTOR CHOOSES TO USE ACTIVITIES REQUIRING PERMITS IT IS THE CONTRACTOR'S RESPONSIBILITY TO SECURE THE PROPER PERMITS. IN ADDITION TO THE BORROW REVIEW (BOE 2289) AND USE/WASTE REVIEW (BDE 2290) SUBMITTALS, THE CONTRACTOR SHALL SUBMIT AND EROSION AND SEDIMENT CONTROL (ESC) PLAN FOR EVERY BWU SITE TO THE DEPARTMENT FOR ACCEPTANCE. GUIDELINES FOR ACCEPTABLE BWU PRACTICES CAN BE FOUND IN SECTION 11.6.1 AND 2 OF THE SWPPP. THE COST OF ALL MATERIALS AND LABOR NECESSARY TO COMPLY WITH THE ABOVE PROVISIONS TO PREPARE AND IMPLEMENT ESC PLANS WILL NOT BE PAID FOR SEPARATELY, BUT SHALL BE CONSIDERED AS INCLUDED IN THE UNIT BID PRICES OF THE CONTRACT AND NO ADDITIONAL COMPENSATION WILL BE ALLOWED.

EARTHWORK

1. SUBGRADE SHALL BE PREPARED IN ACCORDANCE WITH ARTICLE 301.03 OF THE STANDARD SPECIFICATIONS BEFORE REMOVAL OF ANY UNSTABLE MATERIAL.
2. THE SUBGRADE SHALL BE VERIFIED BY PROOF ROLLING WITH A FULLY LOADED TANDEM-AXLE TRUCK.
3. ANY AGGREGATE SUBGRADE IMPROVEMENT CONTAMINATED AND/OR DAMAGED BY THE CONTRACTOR'S VEHICLES AND/OR EQUIPMENT IS TO BE REMOVED AND REPLACED AS DIRECTED BY THE ENGINEER AT THE CONTRACTOR'S EXPENSE.
4. THE FINAL LOCATIONS OF PROPOSED TREES TO BE PLANTED WILL BE WITHIN THE PROJECT LIMITS AND DETERMINED BY THE RESIDENT ENGINEER.

DATE	
BY	
REVISIONS	
NO.	
DESCRIPTION	
DATE	
BY	
NO.	
DESCRIPTION	
DATE	
BY	
NO.	
DESCRIPTION	

DATE	
BY	
REVISIONS	
NO.	
DESCRIPTION	
DATE	
BY	
NO.	
DESCRIPTION	
DATE	
BY	
NO.	
DESCRIPTION	

HRG PROJECT NO.: 665004614
 HRG PROJ. CONTACT: 212288-ent-gm-0.dgn
 FILE NAME: r.dwt.dwg-01.c1g
 PLOT DATE: 3/29/2017
 PEN TABLE:

HRGreen
 HRGreen.com
 Illinois Professional Design Firm
 # 164-001222

USER NAME = bharuna	DESIGNED -	REVISED -
	DRAWN - DMS	REVISED -
PLOT SCALE = NTS	CHECKED -	REVISED -
PLOT DATE = 3/29/2017	DATE = 3/29/17	REVISED -

**STATE OF ILLINOIS
 DEPARTMENT OF TRANSPORTATION**

GENERAL NOTES
 SCALE: NTS SHEET NO. 2 OF 2 SHEETS STA. TO STA.

F.A.I. RTE.	SECTION NO.	COUNTY	TOTAL SHEETS	SHEET NO.
55	99-2AC-3-R(16)	WILL	21	3
CONTRACT NO. 62C88				
FED. ROAD DIST. NO. [ILLINOIS] FED. AID PROJECT				

URBAN

PAYCODE	ITEM DESCRIPTION	UNIT	TOTAL	90% FEDERAL 10% STATE 0004 WILL
20100110	TREE REMOVAL (6 TO 15 UNITS DIAMETER)	UNIT	24	24
20100210	TREE REMOVAL (OVER 15 UNITS DIAMETER)	UNIT	24	24
20200100	EARTH EXCAVATION	CU YD	713	713
20800150	TRENCH BACKFILL	CU YD	49	49
21001000	GEOTECHNICAL FABRIC FOR GROUND STABILIZATION	SO YD	916	916
* 21101505	TOPSOIL EXCAVATION AND PLACEMENT	CU YD	410	410
* 21101625	TOPSOIL FURNISH AND PLACE, 6"	SO YD	723	723
* 25000210	SEEDING, CLASS 2A	ACRE	0.75	0.75
* 25000400	NITROGEN FERTILIZER NUTRIENT	POUND	52	52
* 25000600	POTASSIUM FERTILIZER NUTRIENT	POUND	52	52
△ 25100630	EROSION CONTROL BLANKET	SO YD	2,814	2,814
28000250	TEMPORARY EROSION CONTROL SEEDING	POUND	59	59
28000305	TEMPORARY DITCH CHECKS	FOOT	100	100
28000400	PERIMETER EROSION BARRIER	FOOT	670	670
28000510	INLET FILTERS	EACH	7	7
28001100	TEMPORARY EROSION CONTROL BLANKET	SO YD	2,814	2,814
30300001	AGGREGATE SUBGRADE IMPROVEMENT	CU YD	306	306
30300112	AGGREGATE SUBGRADE IMPROVEMENT 12"	SO YD	3,664	3,664
31101200	SUBBASE GRANULAR MATERIAL, TYPE B 4"	SO YD	159	159
40600275	BITUMINOUS MATERIALS (PRIME COAT)	POUND	6,892	6,892

* SPECIALTY ITEMS
 △ NON-PARTICIPATING

URBAN

PAYCODE	ITEM DESCRIPTION	UNIT	TOTAL	90% FEDERAL 10% STATE 0004 WILL
40600290	BITUMINOUS MATERIALS (TACK COAT)	POUND	637	637
40701841	HOT-MIX ASPHALT PAVEMENT (FULL-DEPTH), 8"	SO YD	2,828	2,828
42400200	PORTLAND CEMENT CONCRETE SIDEWALK 5 INCH	SO FT	1,190	1,190
44000100	PAVEMENT REMOVAL	SO YD	2,625	2,625
44000500	COMBINATION CURB AND GUTTER REMOVAL	FOOT	1,249	1,249
44000600	SIDEWALK REMOVAL	SO FT	1,245	1,245
48203029	HOT-MIX ASPHALT SHOULDERS, 8"	SO YD	235	235
550A0340	STORM SEWERS, CLASS A, TYPE 2 12"	FOOT	92	92
550A0360	STORM SEWERS, CLASS A, TYPE 2 15"	FOOT	151	151
55100500	STORM SEWER REMOVAL 12"	FOOT	287	287
60100060	CONCRETE HEADWALLS FOR PIPE DRAINS	EACH	1	1
60108100	PIPE UNDERDRAINS 4" (SPECIAL)	FOOT	14	14
60108204	PIPE UNDERDRAINS, TYPE 2, 4"	FOOT	62	62
60200805	CATCH BASINS, TYPE A, 4'-DIAMETER, TYPE 8 GRATE	EACH	1	1
60201340	CATCH BASINS, TYPE A, 4'-DIAMETER, TYPE 24 FRAME AND GRATE	EACH	3	3
60237470	INLETS, TYPE A, TYPE 24 FRAME AND GRATE	EACH	3	3
60250200	CATCH BASINS TO BE ADJUSTED	EACH	1	1
60300105	FRAMES AND GRATES TO BE ADJUSTED	EACH	3	3
60500050	REMOVING CATCH BASINS	EACH	6	6
60500060	REMOVING INLETS	EACH	2	2

DATE: _____ BY: _____
 PLAN: _____
 DATE: _____ BY: _____
 PROFILE: _____

DATE: _____ BY: _____
 PROFILE: _____

866001614
 HRGreen.com
 3/29/2017

STATE OF ILLINOIS
 DEPARTMENT OF TRANSPORTATION

SUMMARY OF QUANTITIES
 EAST FRONTAGE ROAD

USER NAME = bharvna	DESIGNED -	REVISED -
DRAWN - DMS	REVISED -	
PLOT SCALE = NTS	CHECKED -	REVISED -
PLOT DATE = 3/29/2017	DATE = 3/29/17	REVISED -

SCALE: NTS	SHEET NO. 1 OF 1 SHEETS	STA. TO STA.
------------	-------------------------	--------------

F.A.I. RTE. 55	SECTION NO. 99-2AC-3-R161	COUNTY WILL	TOTAL SHEETS 21	SHEET NO. 4
CONTRACT NO. 62C88			FED. ROAD DIST. NO. ILLINOIS FED. AID PROJECT	

PLAN	DATE
SURVEYED	BY
PLOTTED	
ALIGNED	
DESIGNED	
CHECKED	
DATE	
FILE NAME	
NO.	

PROFILE	DATE
SURVEYED	BY
PLOTTED	
GRADES CHECKED	
STRUCTURE NOTATIONS CHECKED	
NO.	

1560 PROJECT NO.: 86520461Y
 HRC PROJ. CONTACT: 062028-0017-000-0-000
 FILE NO.: 062028-0017-000-0-000
 PEN TABLE: 062028-0017-000-0-000

URBAN

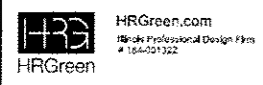
PAYCODE	ITEM DESCRIPTION	UNIT	TOTAL	90% FEDERAL 10% STATE 0004 WILL
60600095	CLASS SI CONCRETE (OUTLET)	CU YD	5	5
60605000	COMBINATION CONCRETE CURB AND GUTTER, TYPE B-6.24	FOOT	1,360	1,360
66500105	WOVEN WIRE FENCE, 4'	FOOT	396	396
* 66900200	NON-SPECIAL WASTE DISPOSAL	CU YD	150	150
* 66900450	SPECIAL WASTE PLANS AND REPORTS	LSUM	1	1
* 66900530	SOIL DISPOSAL ANALYSIS	EACH	3	3
67000400	ENGINEER'S FIELD OFFICE, TYPE A	CAL MO	6	6
67100100	MOBILIZATION	LSUM	1	1
* 72000100	SIGN PANEL - TYPE 1	SO FT	57	57
* 72400100	REMOVE SIGN PANEL ASSEMBLY - TYPE A	EACH	2	2
* 72400310	REMOVE SIGN PANEL - TYPE 1	SO FT	61	61
* 72800100	TELESCOPING STEEL SIGN SUPPORT	FOOT	156	156
* 78000200	THERMOPLASTIC PAVEMENT MARKING - LINE 4"	FOOT	3,988	3,988
* A2007932	TREE, TILIA AMERICANA REDMOND (REDMOND AMERICAN LINDEN), 4" CALIPER, BALLED AND BURLAPPED	EACH	5	5
△ X5537800	STORM SEWERS TO BE CLEANED 12"	FOOT	120	120
△ X5537900	STORM SEWERS TO BE CLEANED 15"	FOOT	96	96
△ X5538000	STORM SEWERS TO BE CLEANED 18"	FOOT	97	97
X7010216	TRAFFIC CONTROL AND PROTECTION, (SPECIAL)	LSUM	1	1
Z0013798	CONSTRUCTION LAYOUT	LSUM	1	1
△ Z0018500	DRAINAGE STRUCTURES TO BE CLEANED	EACH	9	9

* SPECIALTY ITEMS
 △ NON-PARTICIPATING

URBAN

PAYCODE	ITEM DESCRIPTION	UNIT	TOTAL	90% FEDERAL 10% STATE 0004 WILL
Z0022800	FENCE REMOVAL	FOOT	393	393
Z0030850	TEMPORARY INFORMATION SIGNING	SO FT	52	52

2



USER NAME : bharuna	DESIGNED -	REVISED -
	DRAWN - DMS	REVISED -
PLOT SCALE : NTS	CHECKED -	REVISED -
PLOT DATE : 3/29/2017	DATE - 3/29/17	REVISED -

STATE OF ILLINOIS
 DEPARTMENT OF TRANSPORTATION

SCALE: NTS		SHEET NO. 1 OF 1 SHEETS		STA.	TO STA.
------------	--	-------------------------	--	------	---------

SUMMARY OF QUANTITIES
 EAST FRONTAGE ROAD

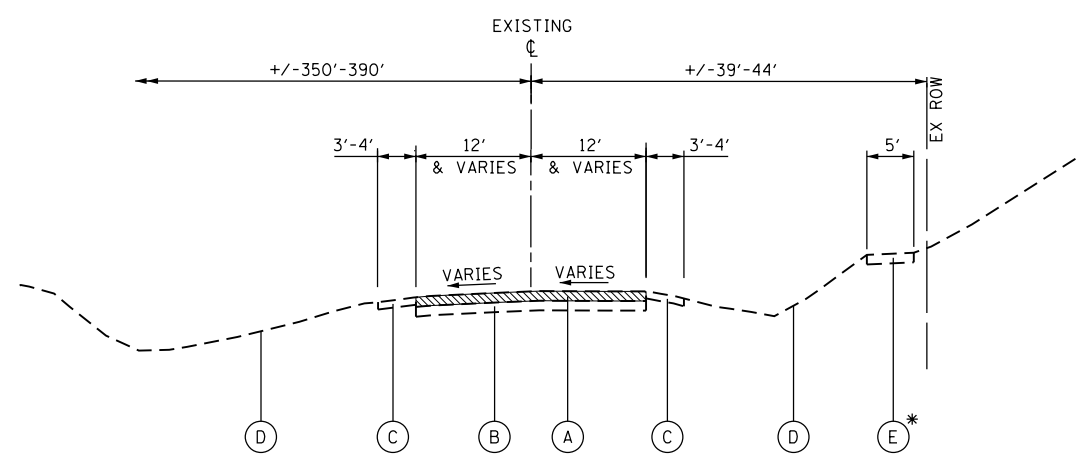
F.A.I. RTE.	SECTION NO.	COUNTY	TOTAL SHEETS	SHEET NO.
55	99-2AC-3-R(16)	WILL	21	5
FED. ROAD DIST. NO.			ILLINOIS FED. AID PROJECT	
			CONTRACT NO. 62C88	

REV

PLAN	SURVEYED	DATE
	PLOTTED	
	GRADES CHECKED	
	ALIGNMENT CHECKED	
	STRUCTURE NOT AT THIS OFFICE	
	NOTE BOOK NO.	
	BY	

PROFILE	SURVEYED	DATE
	PLOTTED	
	GRADES CHECKED	
	ALIGNMENT CHECKED	
	STRUCTURE NOT AT THIS OFFICE	
	NOTE BOOK NO.	
	BY	

HRG PROJECT NO.: 8660046.4
 HRG PROJ. CONTACT: D62C88-sht-typical-02.dgn
 FILE NAME: 8660046.dwg
 PEN TABLE: p01tbl.tbl



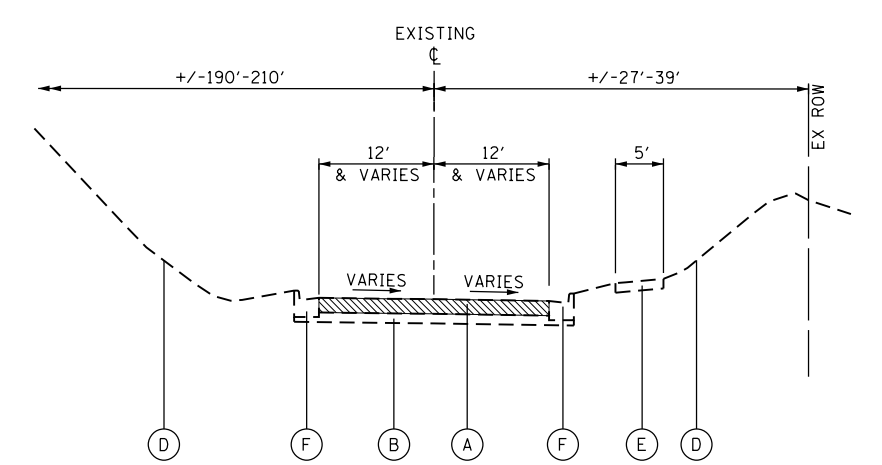
EXISTING TYPICAL SECTION

EAST FRONTAGE ROAD (I-55) SOUTHWEST OF BLACK ROAD
 STA. 241+50.00 TO STA. 244+73.00

* SIDEWALK BEGINS AT STA. 242+15

EXISTING LEGEND

- (A) EXISTING HOT-MIX ASPHALT, 4.5"-11.5"
- (B) EXISTING AGGREGATE, (DEPTH VARIES)
- (C) EXISTING AGGREGATE SHOULDER
- (D) EXISTING GROUND
- (E) EXISTING PCC SIDEWALK
- (F) EXISTING CONC CURB & GUTTER, TYPE B-6.24



EXISTING TYPICAL SECTION

EAST FRONTAGE ROAD (I-55) SOUTHWEST OF BLACK ROAD
 STA. 244+73.00 TO STA. 251+00.00

HOT-MIX ASPHALT MIXTURE REQUIREMENTS		
MIXTURE TYPE	AIR VOIDS @ Ndes	QUALITY MANAGEMENT PROGRAM (QMP)
HOT-MIX ASPHALT PAVEMENT (FULL DEPTH), 8"		
POLYMERIZED HOT-MIX ASPHALT SURFACE COURSE, MIX "E", N70 (IL 9.5mm); 2"	4.0% @ 70 GYR.	QC/OA
HMA BASE COURSE (HMA BINDER IL-19.0mm); 6"	4.0% @ 70 GYR.	QC/OA
HMA SHOULDERS, 8"		
POLYMERIZED HOT-MIX ASPHALT SURFACE COURSE, MIX "E", N70 (IL 9.5mm); 2"	4.0% @ 70 GYR.	QC/OA
HMA SHOULDER (HMA BINDER IL-19mm); 6"	4.0% @ 70 GYR.	QC/OA
QMP DESIGNATION: QUALITY CONTROL/QUALITY ASSURANCE (QC/OA); QUALITY CONTROL FOR PERFORMANCE (QCP)		

THE UNIT WEIGHT USED TO CALCULATE ALL HOT-MIX ASPHALT SURFACE MIXTURE QUANTITIES IS 112 LBS/SQ YD/IN.

THE AC TYPE FOR POLYMERIZED HMA MIXTURES SHALL BE "SBS/SBR PG 76 -22" AND FOR NON-POLYMERIZED HMA THE "AC TYPE" SHALL BE "PG 64 -22" UNLESS MODIFIED BY DISTRICT ONE SPECIAL PROVISIONS.

FOR USE OF RECYCLED MATERIALS SEE SPECIAL PROVISIONS.

QUALITY MANAGEMENT PROGRAM (QMP) IDENTIFIES THE PARTICULAR QUALITY CONTROL SPECIFICATION THAT APPLIES TO THE HMA MIXTURE.



USER NAME = bharto	DESIGNED -	REVISED -
	DRAWN - DMS	REVISED -
PLOT SCALE =	CHECKED -	REVISED -
PLOT DATE = 3/29/2017	DATE - 3/29/17	REVISED -

**STATE OF ILLINOIS
 DEPARTMENT OF TRANSPORTATION**

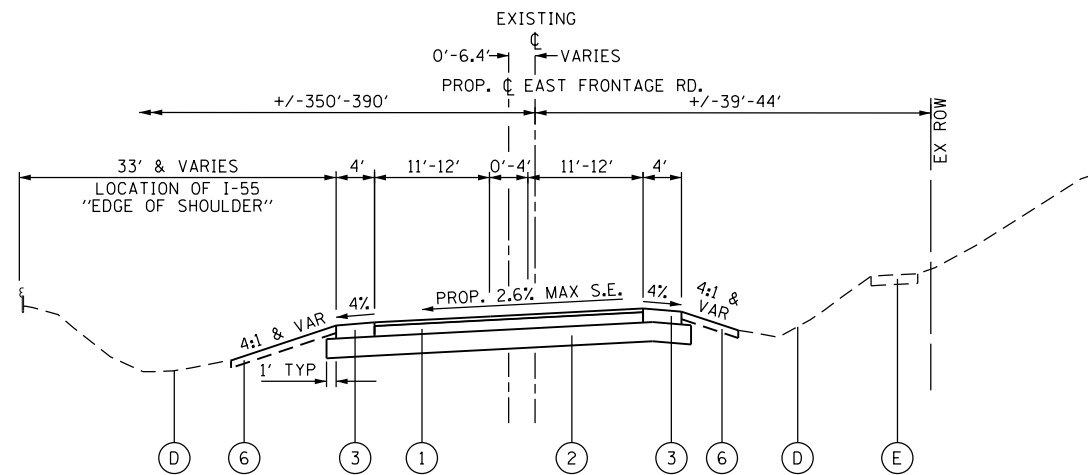
EXISTING TYPICAL SECTIONS	
EAST FRONTAGE ROAD	
SCALE:	SHEET NO. 1 OF 2 SHEETS
STA.	TO STA.

F.A.I. RTE.	SECTION NO.	COUNTY	TOTAL SHEETS	SHEET NO.
55	99-2AC-3-R(16)	WILL	21	6
CONTRACT NO. 62C88				
FED. ROAD DIST. NO. ILLINOIS FED. AID PROJECT				

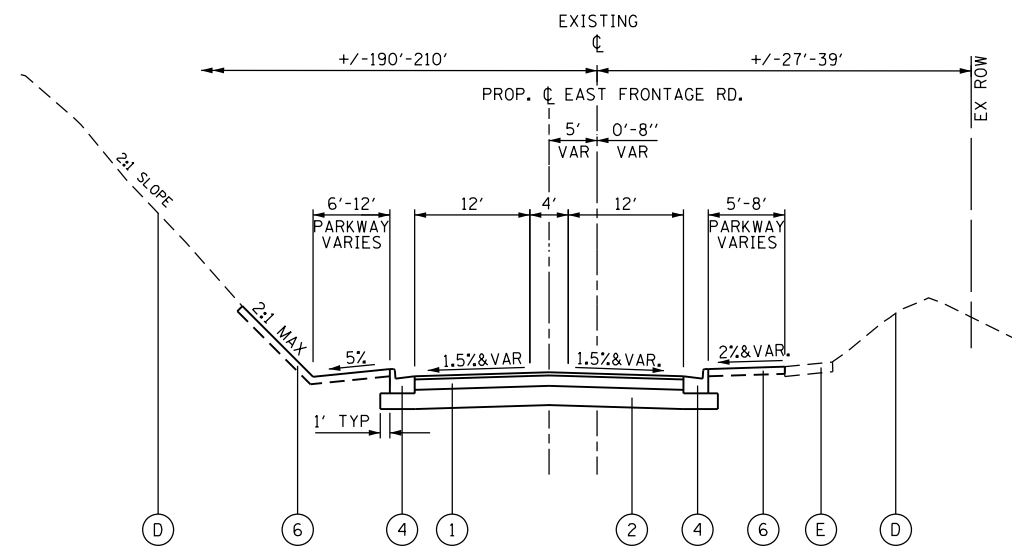
DATE	
BY	
PLAN	SURVEYED
	PLOTTED
	NOTE BOOK
	NO.
	CHECKED
	FILE NAME
	NO.
	DATE

DATE	
BY	
PROFILE	SURVEYED
	PLOTTED
	NOTE BOOK
	NO.
	CHECKED
	FILE NAME
	NO.
	DATE

HRG PROJECT NO.: 8660046.4
 HRG PROJ. CONTACT: D62C88-shr-typlc-02.dgn
 FILE NAME: 8660046.4
 PEN TABLE: profile.tbl



PROPOSED TYPICAL SECTION
 EAST FRONTAGE ROAD (I-55) SOUTHWEST OF BLACK ROAD
 STA. 241+50.00 TO STA. 244+22.00 (SUPER ELEVATION)



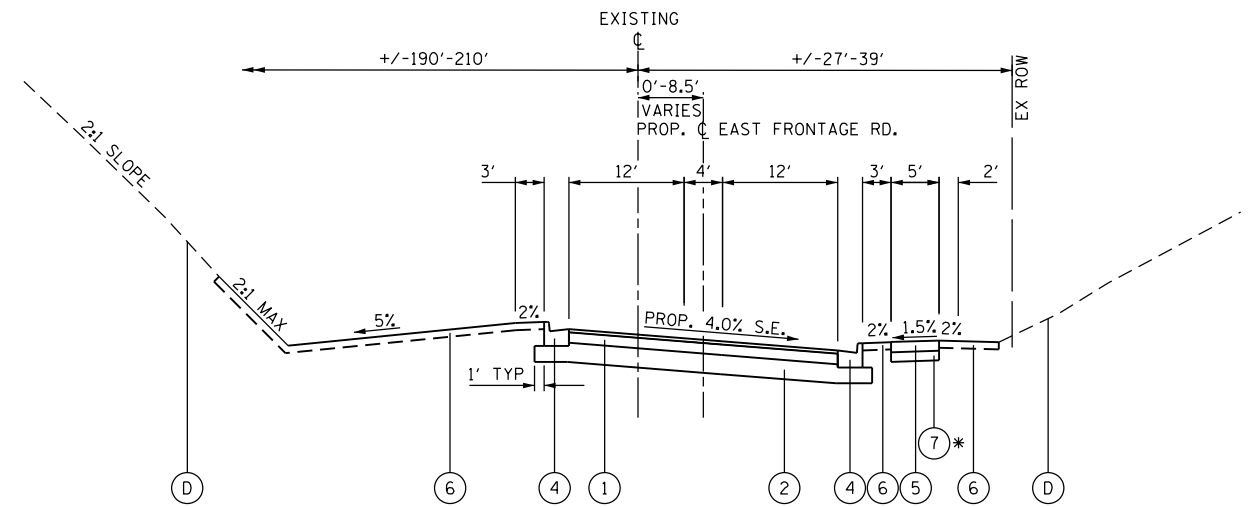
PROPOSED TYPICAL SECTION
 EAST FRONTAGE ROAD (I-55) SOUTHWEST OF BLACK ROAD
 STA. 247+72.00 TO STA. 248+61.00 (SUPER ELEVATION)
 STA. 248+61.00 TO STA. 251+00.00 (NORMAL CROWN)

EXISTING LEGEND

- (A) EXISTING HOT-MIX ASPHALT, 4.5"-11.5"
- (B) EXISTING AGGREGATE, (DEPTH VARIES)
- (C) EXISTING AGGREGATE SHOULDER
- (D) EXISTING GROUND
- (E) EXISTING PCC SIDEWALK
- (F) EXISTING CONC CURB & GUTTER, TYPE B-6.24

PROPOSED LEGEND

- (1) HOT-MIX ASPHALT PAVEMENT (FULL DEPTH), 8"
- (2) AGGREGATE SUBGRADE IMPROVEMENT, 12"
- (3) HOT-MIX ASPHALT SHOULDERS, 8"
- (4) COMBINATION CONCRETE CURB & GUTTER, TYPE B-6.24
- (5) P.C.C. SIDEWALK, 5"
- (6) TOPSOIL, 6" AND SEEDING CLASS 2A
- (7) SUBBASE GRANULAR MATERIAL, TYPE B, 4"



PROPOSED TYPICAL SECTION
 EAST FRONTAGE ROAD (I-55) SOUTHWEST OF BLACK ROAD
 STA. 244+22.00 TO STA. 247+72.00 (SUPER ELEVATION)

* PROPOSED SIDEWALK AT STA. 245+09 TO 247+72

EARTHWORK SCHEDULE

P_FRONT	EARTHWORK (CU YD)			EARTHWORK BALANCE WASTE (+) OR SHORTAGE (-) WITH 15% SHRINKAGE
	TOPSOIL EXCAVATION AND PLACEMENT	EARTH EXCAVATION	EMBANKMENT	
241+00.00	-	-	-	0.0
241+50.00	3.6	23.5	0.1	19.9
242+00.00	15.3	50.7	1.9	41.3
242+50.00	21.1	61.5	2.0	50.2
243+00.00	16.9	73.5	0.4	62.1
243+50.00	22.5	72.8	4.4	57.5
244+00.00	29.9	62.9	17.0	36.4
244+50.00	31.0	53.3	39.4	6.0
245+00.00	30.6	39.6	39.5	-5.9
245+50.00	23.1	25.4	28.5	-7.0
246+00.00	20.9	18.1	45.9	-30.5
246+50.00	24.1	17.5	57.1	-42.3
247+00.00	23.5	15.8	38.2	-24.8
247+50.00	22.0	16.3	20.1	-6.2
248+00.00	19.3	14.3	18.5	-6.4
248+50.00	18.5	17.7	16.4	-1.4
249+00.00	18.9	25.6	17.8	4.0
249+50.00	19.9	27.3	18.7	4.5
250+00.00	18.2	28.1	16.4	7.5
250+50.00	14.7	30.0	10.3	15.2
251+00.00	15.8	38.6	4.5	28.3
TOTALS:	410.0	712.6	397.1	208.6



USER NAME = bhartha	DESIGNED -	REVISED -
	DRAWN - DMS	REVISED -
PLOT SCALE =	CHECKED -	REVISED -
PLOT DATE = 3/29/2017	DATE - 3/29/17	REVISED -

STATE OF ILLINOIS
 DEPARTMENT OF TRANSPORTATION

PROPOSED TYPICAL SECTIONS
 EAST FRONTAGE ROAD

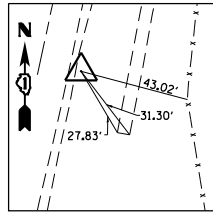
SCALE: SHEET NO. 2 OF 2 SHEETS STA. TO STA.

F.A.I. RTE.	SECTION NO.	COUNTY	TOTAL SHEETS	SHEET NO.
55	99-2AC-3-R(16)	WILL	21	7
CONTRACT NO. 62C88				
FED. ROAD DIST. NO. ILLINOIS FED. AID PROJECT				

PLAN	SURVEYED	DATE
	PLOTTED	
	GRADES CHECKED	
	STRUCTURE NOTATIONS OK'D	
	NOTE BOOK NO.	
	BY	

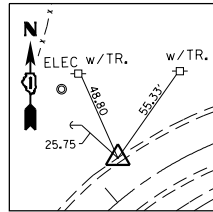
PROFILE	SURVEYED	DATE
	PLOTTED	
	GRADES CHECKED	
	STRUCTURE NOTATIONS OK'D	
	NOTE BOOK NO.	
	BY	

HRG PROJECT NO.: 8650046.4
 HRG PROJ. CONTACT: D62C88-sh77-A1.Dwg
 FILE NAME: 8650046.dwg
 PEN TABLE: 8650046.tbl



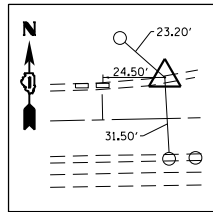
CONTROL POINT 100

IP W/CAP, E SIDE OF FRONTAGE RD, NEAR S. END OF SIDEWALK. 4.80' E'LY OF E. EP, 27.83 NW'LY END OF WALK CORNER & 43.02 W'LY OF CORNER POINT IN WOOD PRIVACY FENCE. STA. 242+36.01, 16.36 RT N=1773161.82 E=1026261.70 ELEV.=583.17



CONTROL POINT 101

"X" CUT ON T/C, N/W SIDE OF FRONTAGE RD, IN CURVE FROM N-S TO E-W. 55.33' SW'LY OF POWER POLE W/TRANSFORMER, 48.80' SW'LY OF SPIKE IN S'FACE OF POWER POLE & 25.75' SE'LY OF SIGN POST. STA. 246+13.85, 18.21 LT N=1773527.35 E=1026359.22 ELEV.=584.41

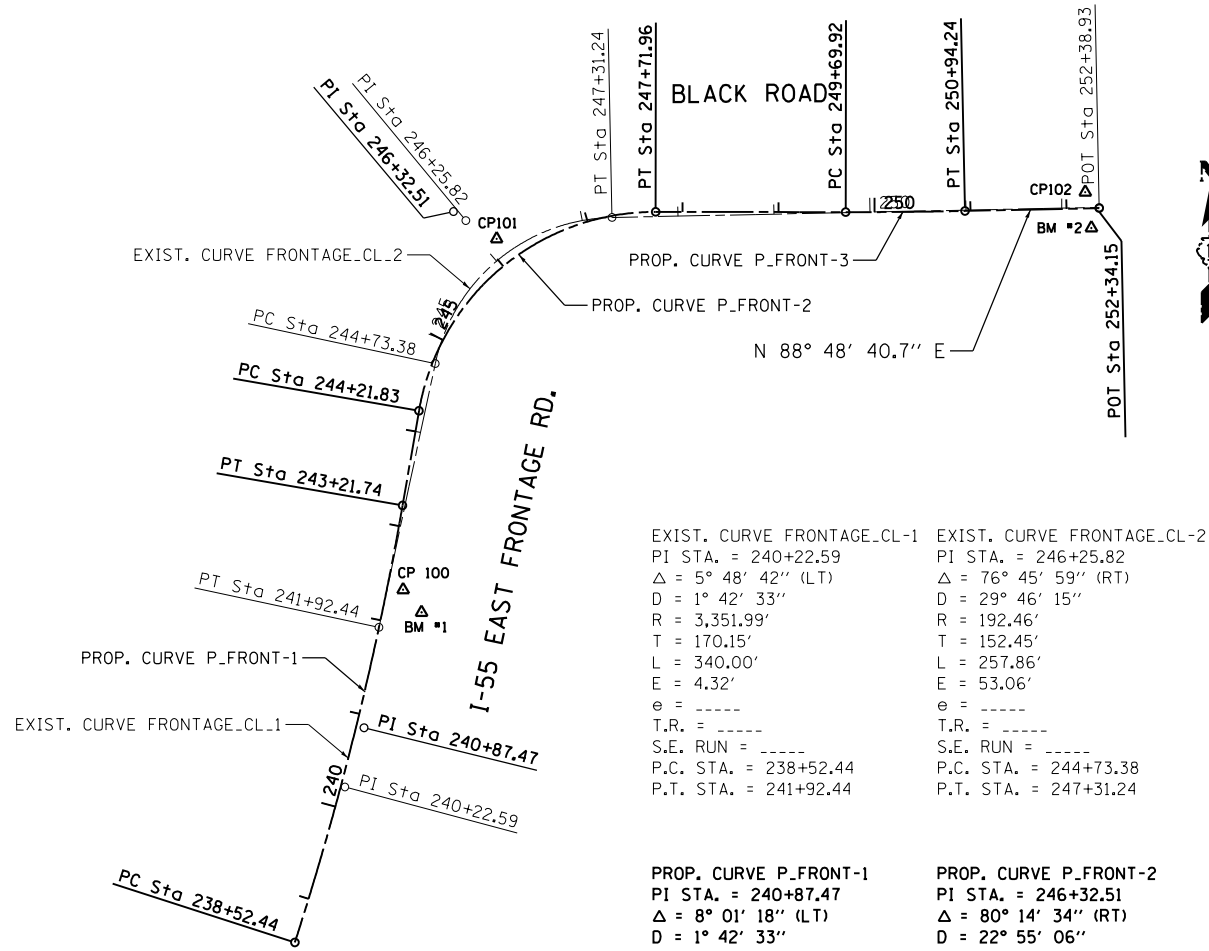


CONTROL POINT 102

"X" CUT ON CURB N'SIDE OF FRONTAGE RD, IN CURVE NEAR BLACK RD INTERSECTION. 24.50 E'LY ALONG CURB LINE FROM C CB, 23.20 SE'LY OF CB IN SWALE & 31.50' N'LY OF CB IN S. CURB LINE. STA. 252+24.71, 16.10 LT N=1773575.96 E=1026972.50 ELEV.=581.34

EXISTING EAST FRONTAGE ROAD				
ROUTE	POINT	NORTHING	EASTING	STATION
FRONTAGE RD. CURVE FRONTAGE.CL-1	PI	1,772,956.22	1,026,201.11	240+22.59
	PC	1,772,794.27	1,026,148.93	238+52.44
	PT	1,773,122.62	1,026,236.61	241+92.44
FRONTAGE RD. CURVE FRONTAGE.CL-2	PI	1,773,546.47	1,026,327.05	246+25.82
	PC	1,773,397.37	1,026,295.24	244+73.38
	PT	1,773,122.62	1,026,236.61	247+31.24
END POINT	POA	1,773,560.16	1,026,987.05	252+38.93

PROPOSED EAST FRONTAGE ROAD				
ROUTE	POINT	NORTHING	EASTING	STATION
FRONTAGE RD. CURVE P_FRONT-1	PI	1,773,017.98	1,026,221.00	240+87.47
	PC	1,772,794.27	1,026,148.93	238+52.44
	PT	1,773,249.56	1,026,261.15	243+21.74
FRONTAGE RD. CURVE P_FRONT-2	PI	1,773,555.77	1,026,314.23	246+32.51
	PC	1,773,348.18	1,026,278.24	244+21.83
	PT	1,773,555.48	1,026,524.57	247+71.96
FRONTAGE RD. CURVE P_FRONT-3	PI	1,773,555.21	1,026,785.03	250+32.08
	PC	1,773,555.21	1,026,722.87	249+69.92
	PT	1,773,556.42	1,026,847.18	250+94.24
END POINT	POA	1,773,559.32	1,026,987.07	252+34.15



EXIST. CURVE FRONTAGE.CL-1		EXIST. CURVE FRONTAGE.CL-2	
PI STA. = 240+22.59	PI STA. = 246+25.82	PI STA. = 246+25.82	PI STA. = 250+32.08
Δ = 5° 48' 42" (LT)	Δ = 76° 45' 59" (RT)	Δ = 76° 45' 59" (RT)	Δ = 1° 15' 59" (LT)
D = 1° 42' 33"	D = 29° 46' 15"	D = 29° 46' 15"	D = 1° 01' 07"
R = 3,351.99'	R = 192.46'	R = 192.46'	R = 5,625.00'
T = 170.15'	T = 152.45'	T = 152.45'	T = 62.16'
L = 340.00'	L = 257.86'	L = 257.86'	L = 124.32'
E = 4.32'	E = 53.06'	E = 53.06'	E = 0.34'
θ = -----	θ = -----	θ = -----	θ = NC @ 1.5%
T.R. = -----	T.R. = -----	T.R. = -----	T.R. = -----
S.E. RUN = -----	S.E. RUN = -----	S.E. RUN = -----	S.E. RUN = -----
P.C. STA. = 238+52.44	P.C. STA. = 244+73.38	P.C. STA. = 244+73.38	P.C. STA. = 249+69.92
P.T. STA. = 241+92.44	P.T. STA. = 247+31.24	P.T. STA. = 247+31.24	P.T. STA. = 250+94.24

PROP. CURVE P_FRONT-1		PROP. CURVE P_FRONT-2		PROP. CURVE P_FRONT-3	
PI STA. = 240+87.47	PI STA. = 246+32.51	PI STA. = 246+32.51	PI STA. = 250+32.08	PI STA. = 250+32.08	PI STA. = 250+32.08
Δ = 8° 01' 18" (LT)	Δ = 80° 14' 34" (RT)	Δ = 80° 14' 34" (RT)	Δ = 1° 15' 59" (LT)	Δ = 1° 15' 59" (LT)	Δ = 1° 01' 07"
D = 1° 42' 33"	D = 22° 55' 06"	D = 22° 55' 06"	D = 1° 01' 07"	D = 1° 01' 07"	D = 1° 01' 07"
R = 3,351.99'	R = 250.00'	R = 250.00'	R = 5,625.00'	R = 5,625.00'	R = 5,625.00'
T = 235.03'	T = 210.68'	T = 210.68'	T = 62.16'	T = 62.16'	T = 62.16'
L = 469.30'	L = 350.13'	L = 350.13'	L = 124.32'	L = 124.32'	L = 124.32'
E = 8.23'	E = 76.93'	E = 76.93'	E = 0.34'	E = 0.34'	E = 0.34'
θ = 2.6%	θ = 4.0%	θ = 4.0%	θ = NC @ 1.5%	θ = NC @ 1.5%	θ = NC @ 1.5%
T.R. = NONE	T.R. = 32'	T.R. = 32'	T.R. = -----	T.R. = -----	T.R. = -----
S.E. RUN = 67'	S.E. RUN = 85'	S.E. RUN = 85'	S.E. RUN = -----	S.E. RUN = -----	S.E. RUN = -----
P.C. STA. = 238+52.44	P.C. STA. = 244+21.83	P.C. STA. = 244+21.83	P.C. STA. = 249+69.92	P.C. STA. = 249+69.92	P.C. STA. = 249+69.92
P.T. STA. = 243+21.74	P.T. STA. = 247+71.96	P.T. STA. = 247+71.96	P.T. STA. = 250+94.24	P.T. STA. = 250+94.24	P.T. STA. = 250+94.24

BENCHMARK #1

ELEV. = 585.61
 □ -CUT ON CONC. WALK @ SE'LY CORNER OF S. END OF WALK, 26.55 SW'LY OF CORNER POINT IN WOOD PRIVACY FENCE & 31.30 SE'LY OF CP 100.

BENCHMARK #2

ELEV. = 581.75
 □ -CUT @ FACE OF, S.SIDE OF FRONTAGE RD. NEAR BLACK RD. INTERSECTION 37.55' SE'LY OF CP102, 8.05' SW'LY OF E'LY CB C & 7.43' SE'LY OF W'LY CB C.



USER NAME = bhar-tma	DESIGNED -	REVISED -
	DRAWN - DMS	REVISED -
PLOT SCALE = 1"=100'	CHECKED -	REVISED -
PLOT DATE = 3/29/2017	DATE - 3/29/17	REVISED -

STATE OF ILLINOIS
 DEPARTMENT OF TRANSPORTATION

ALIGNMENTS, TIES AND BENCHMARKS			
EAST FRONTAGE ROAD			
SCALE: 1"=100'	SHEET NO. 1 OF 1 SHEETS	STA.	TO STA.

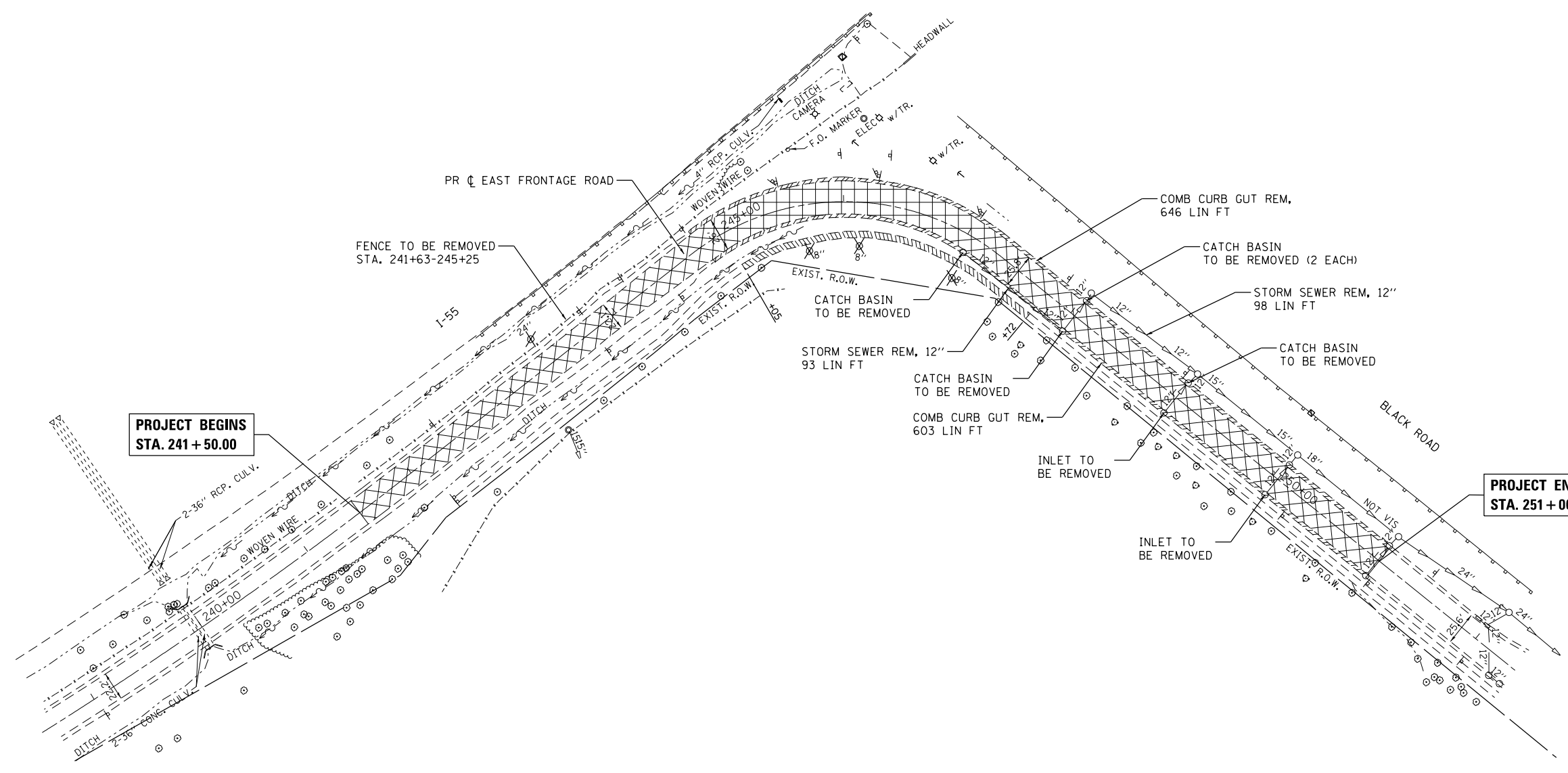
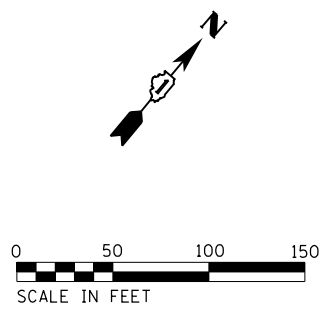
F.A.I. RTE.	SECTION NO.	COUNTY	TOTAL SHEETS	SHEET NO.
55	99-2AC-3-R(16)	WILL	21	8
CONTRACT NO. 62C88				
FED. ROAD DIST. NO. ILLINOIS FED. AID PROJECT				

PLAN	SURVEYED	DATE
	PLOTTED	BY
	GRADES CHECKED	
	STRUCTURE NOT AT THIS CHKD	
	NOTE BOOK NO.	
	FILE NAME	
	PEN TABLE	

PROFILE	SURVEYED	DATE
	PLOTTED	BY
	GRADES CHECKED	
	STRUCTURE NOT AT THIS CHKD	
	NOTE BOOK NO.	
	FILE NAME	
	PEN TABLE	

HRG PROJECT NO.: 8660046.4
 HRG PROJ. CONTACT: D62C88-sh1-removal-01.dgn
 FILE NAME: 8660046.ctb
 PEN TABLE: pen1tbl.tbl

LEGEND:	
	PAVEMENT REMOVAL
	SIDEWALK REMOVAL
	COMB CC&G REMOVAL
	TREE REMOVAL



**PROJECT BEGINS
STA. 241 + 50.00**

**PROJECT ENDS
STA. 251 + 00.00**



USER NAME = bhartm	DESIGNED -	REVISED -
	DRAWN - DMS	REVISED -
PLOT SCALE = 1"=50'	CHECKED -	REVISED -
PLOT DATE = 3/29/2017	DATE - 3/29/17	REVISED -

**STATE OF ILLINOIS
DEPARTMENT OF TRANSPORTATION**

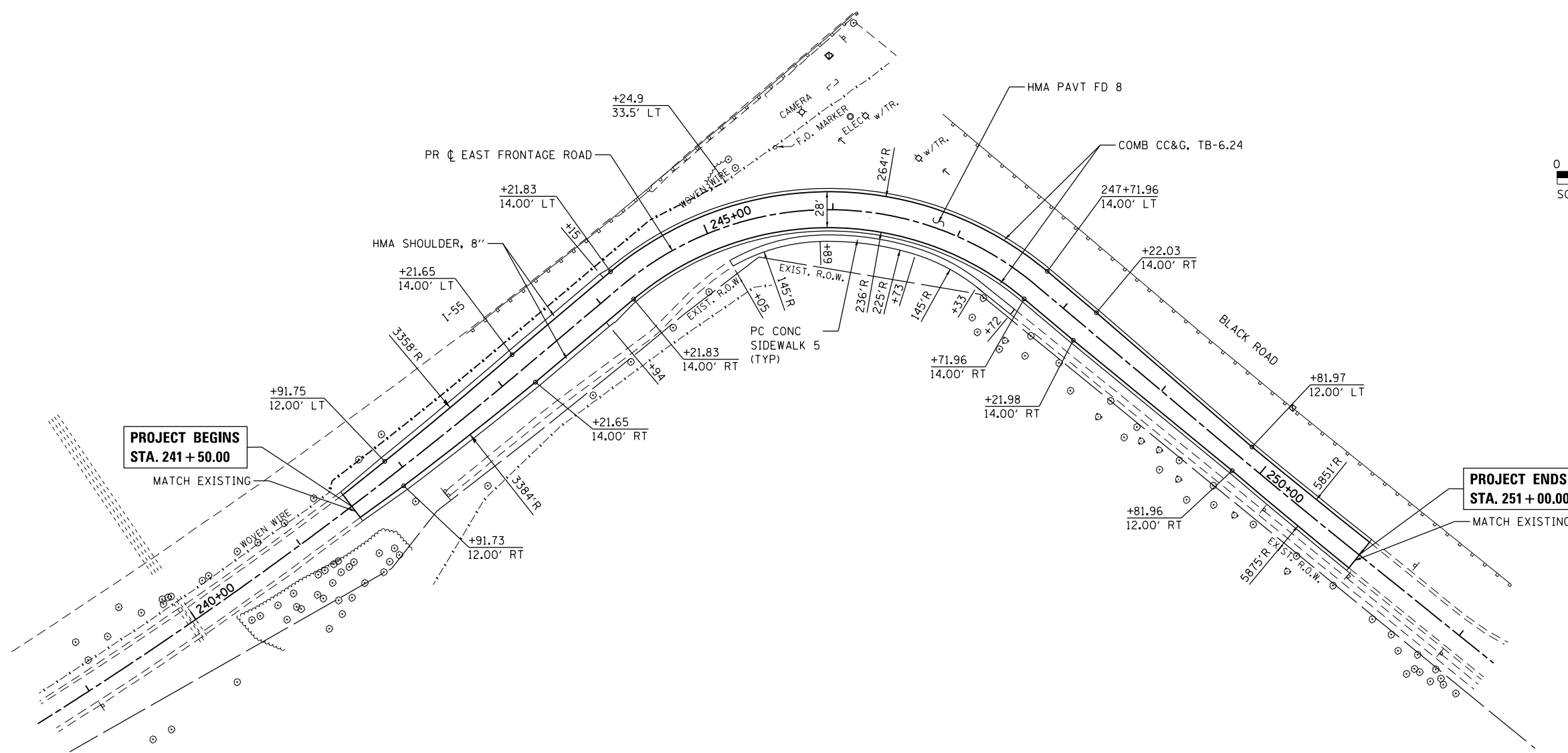
REMOVAL PLAN EAST FRONTAGE ROAD		
SCALE: 1"=50'	SHEET NO. 1 OF 1 SHEETS	STA. TO STA.

F.A.I. RTE.	SECTION NO.	COUNTY	TOTAL SHEETS	SHEET NO.
55	99-2AC-3-R(16)	WILL	21	9
CONTRACT NO. 62C88				
FED. ROAD DIST. NO. ILLINOIS FED. AID PROJECT				

PLAN	SURVEYED	DATE
	PLOTTED	
	ALIGNED	
	CHECKED	
	FILED	
	NO. _____	
	BY _____	

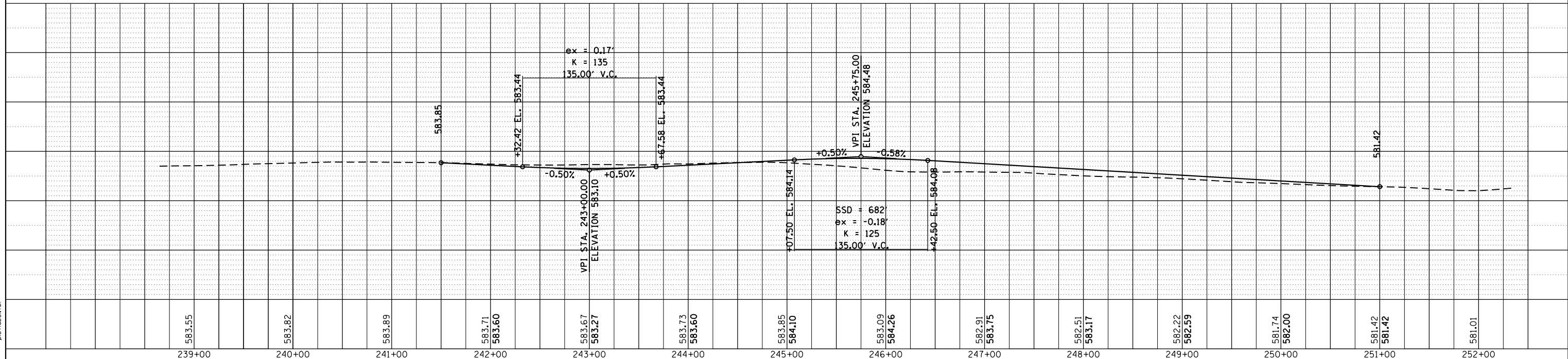
PROFILE	SURVEYED	DATE
	PLOTTED	
	GRADES CHECKED	
	STRUCTURE NOTATIONS CHECKED	
	NO. _____	
	BY _____	

HRG PROJECT NO.: 8650046.4
 HRG PROJ. CONTACT: D62C88-shr+shd+0.dgn
 FILE NAME: 8650046.4.dgn
 PEN TABLE: pen.tbl



PROJECT BEGINS
STA. 241 + 50.00

PROJECT ENDS
STA. 251 + 00.00



583.55	583.82	583.89	583.71	583.60	583.67	583.27	583.73	583.60	583.85	584.10	583.09	584.26	582.91	583.75	582.51	583.17	582.22	582.59	581.74	582.00	581.42	581.42	581.01
239+00	240+00	241+00	242+00	243+00	244+00	245+00	246+00	247+00	248+00	249+00	250+00	251+00	252+00										

USER NAME = bhartha	DESIGNED -	REVISED -
	DRAWN - DMS	REVISED -
PLOT SCALE = 1"=50'	CHECKED -	REVISED -
PLOT DATE = 3/29/2017	DATE - 3/29/17	REVISED -

STATE OF ILLINOIS	ROADWAY PLAN & PROFILE
DEPARTMENT OF TRANSPORTATION	EAST FRONTAGE ROAD
SCALE: 1"=50'	SHEET NO. 1 OF 1 SHEETS
STA.	TO STA.

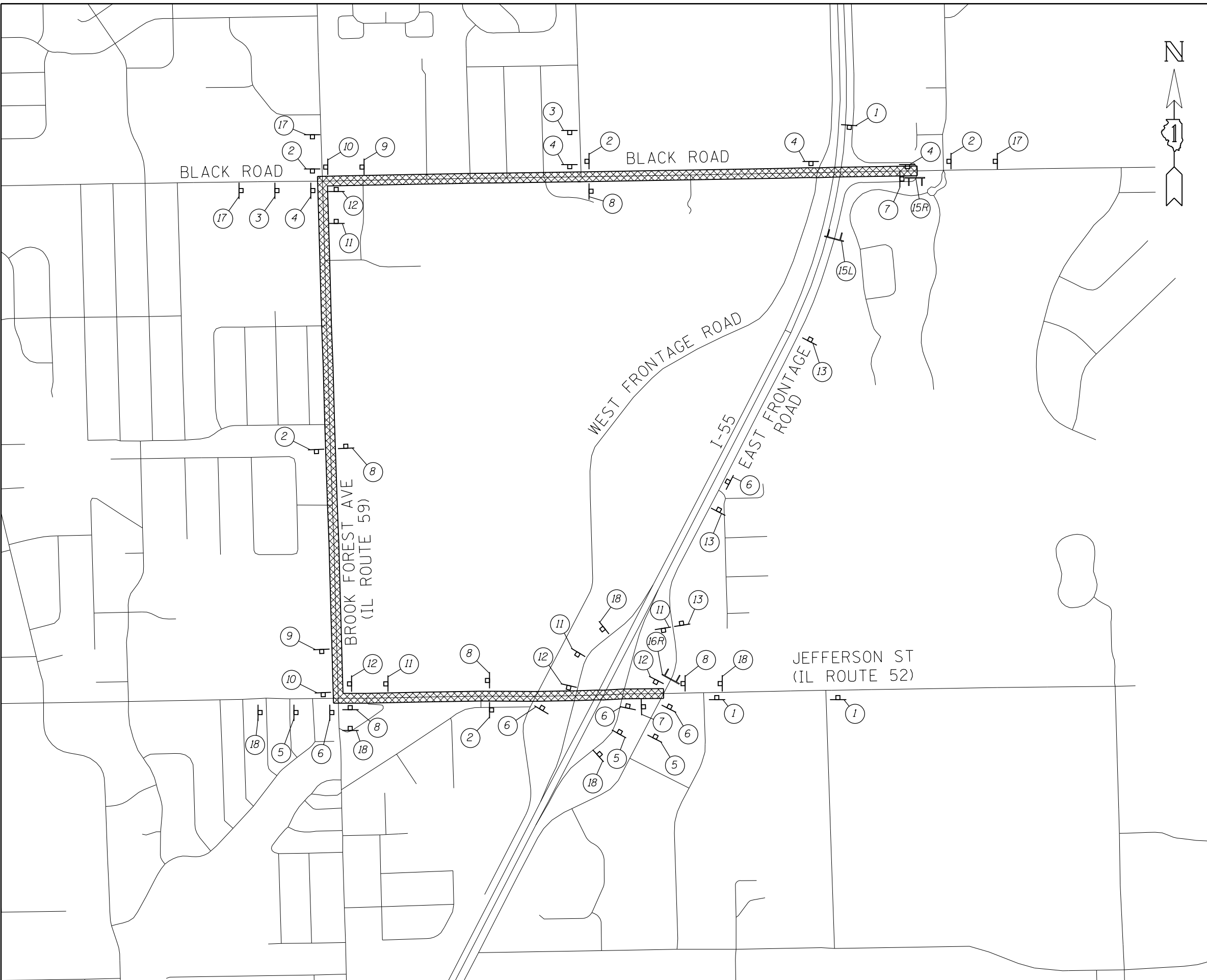
F.A.I. RTE. 55	SECTION NO. 99-2AC-3-R(16)	COUNTY WILL	TOTAL SHEETS 21	SHEET NO. 10
CONTRACT NO. 62C88				
FED. ROAD DIST. NO. ILLINOIS FED. AID PROJECT				



PLAN	SURVEYED	DATE
NOTE BOOK	PLOTTED	
NO.	ALIGNMENT	
	CHECKED	
	FILE NAME	
	FILE NO.	

PROFILE	SURVEYED	DATE
NOTE BOOK	GRADES CHECKED	
NO.	STRUCTURE	
	NOTATIS	
	CHFD	

HRG PROJECT NO.: 8660046.4
 HRG PROJ. CONTACT: D62288-shr-staging-detour-01.dgn
 FILE NAME: 8660046.dwg
 PEN TABLE:



SIGN LEGEND

- 1 DETOUR AHEAD
- 2 DETOUR SOUTH EAST FRONTAGE ROAD
- 3 DETOUR SOUTH EAST FRONTAGE ROAD
- 4 DETOUR SOUTH EAST FRONTAGE ROAD
- 5 DETOUR NORTH EAST FRONTAGE ROAD
- 6 DETOUR NORTH EAST FRONTAGE ROAD
- 7 END DETOUR
- 8 DETOUR NORTH EAST FRONTAGE ROAD
- 9 DETOUR SOUTH EAST FRONTAGE ROAD
- 10 DETOUR SOUTH EAST FRONTAGE ROAD
- 11 DETOUR NORTH EAST FRONTAGE ROAD
- 12 DETOUR NORTH EAST FRONTAGE ROAD
- 13 ROAD CLOSED AHEAD
- 14 ROAD CLOSED 1000 FT.
- 15R* ROAD CLOSED LOCAL TRAFFIC ONLY
- 16R* ROAD CLOSED LOCAL TRAFFIC ONLY
- 15L* ROAD CLOSED
- 17* SOUTHBOUND EAST FRONTAGE ROAD CLOSED AT BLACK ROAD USE DETOUR
- 18* NORTHBOUND EAST FRONTAGE ROAD CLOSED AT BLACK ROAD USE DETOUR

* NOTE: SIGNS ARE TO BE MOUNTED ABOVE BARRICADE RAILS.

DETOUR LEGEND

- DETOUR ROUTE
- DETOUR GUIDE SIGN
- BARRICADE, TYPE III

HRGreen.com
 Illinois Professional Design Firm
 #184-001322

USER NAME = bhar-ma	DESIGNED -	REVISED -
	DRAWN - DMS	REVISED -
PLOT SCALE = NTS	CHECKED -	REVISED -
PLOT DATE = 3/29/2017	DATE - 3/29/17	REVISED -

**STATE OF ILLINOIS
 DEPARTMENT OF TRANSPORTATION**

**DETOUR PLAN
 EAST FRONTAGE ROAD**

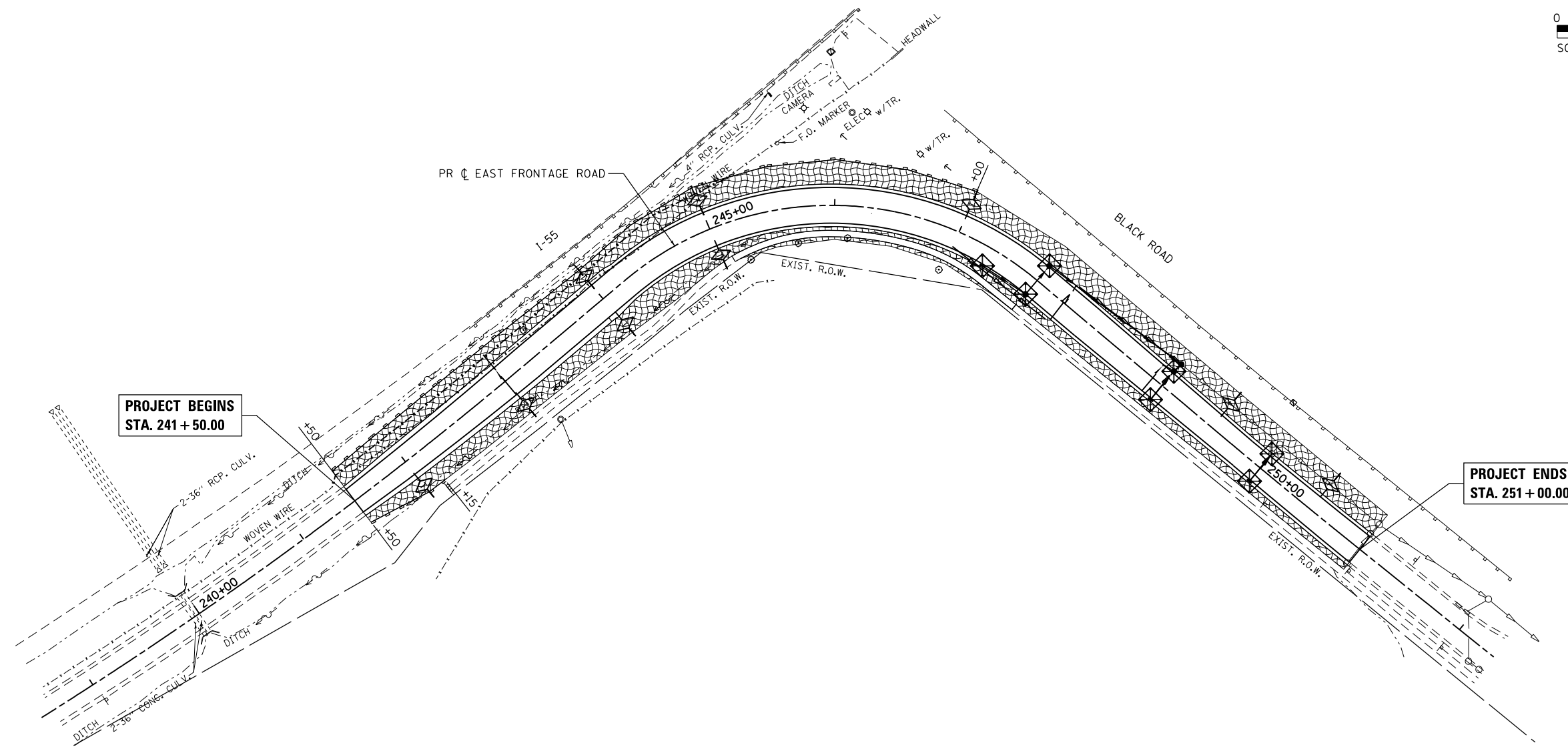
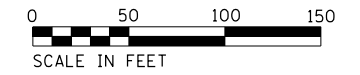
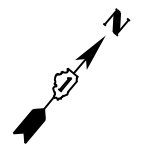
SCALE: NTS SHEET NO. 1 OF 1 SHEETS STA. TO STA.

F.A.I. RTE.	SECTION NO.	COUNTY	TOTAL SHEETS	SHEET NO.
55	99-2AC-3-R(16)	WILL	21	11
CONTRACT NO. 62C88				
FED. ROAD DIST. NO. ILLINOIS FED. AID PROJECT				

PLAN	SURVEYED	DATE
	PLOTTED	BY
	ALIGNED	
	CHECKED	
	FILED	
	FILE NAME	
	FILE NO.	
	FILE DATE	

PROFILE	SURVEYED	DATE
	PLOTTED	BY
	GRADES CHECKED	
	STRUCTURE NOTATIONS CHECKED	
	FILE NAME	
	FILE NO.	
	FILE DATE	

HRG PROJECT NO.: 8650046.4
 HRG PROJ. CONTACT: D62C288-shr-er-cs-01.dgn
 FILE NAME: 62c288-er-cg
 PEN TABLE:



**PROJECT BEGINS
STA. 241 + 50.00**

**PROJECT ENDS
STA. 251 + 00.00**

LEGEND:

- INLET FILTERS (EA)
- PERIMETER EROSION BARRIER (FT)
- TEMPORARY DITCH CHECK (FT)
- TEMPORARY EROSION CONTROL BLANKET
TEMPORARY EROSION CONTROL SEEDING (LB)
(APPLICATION RATE = 100 LB/ACRE)

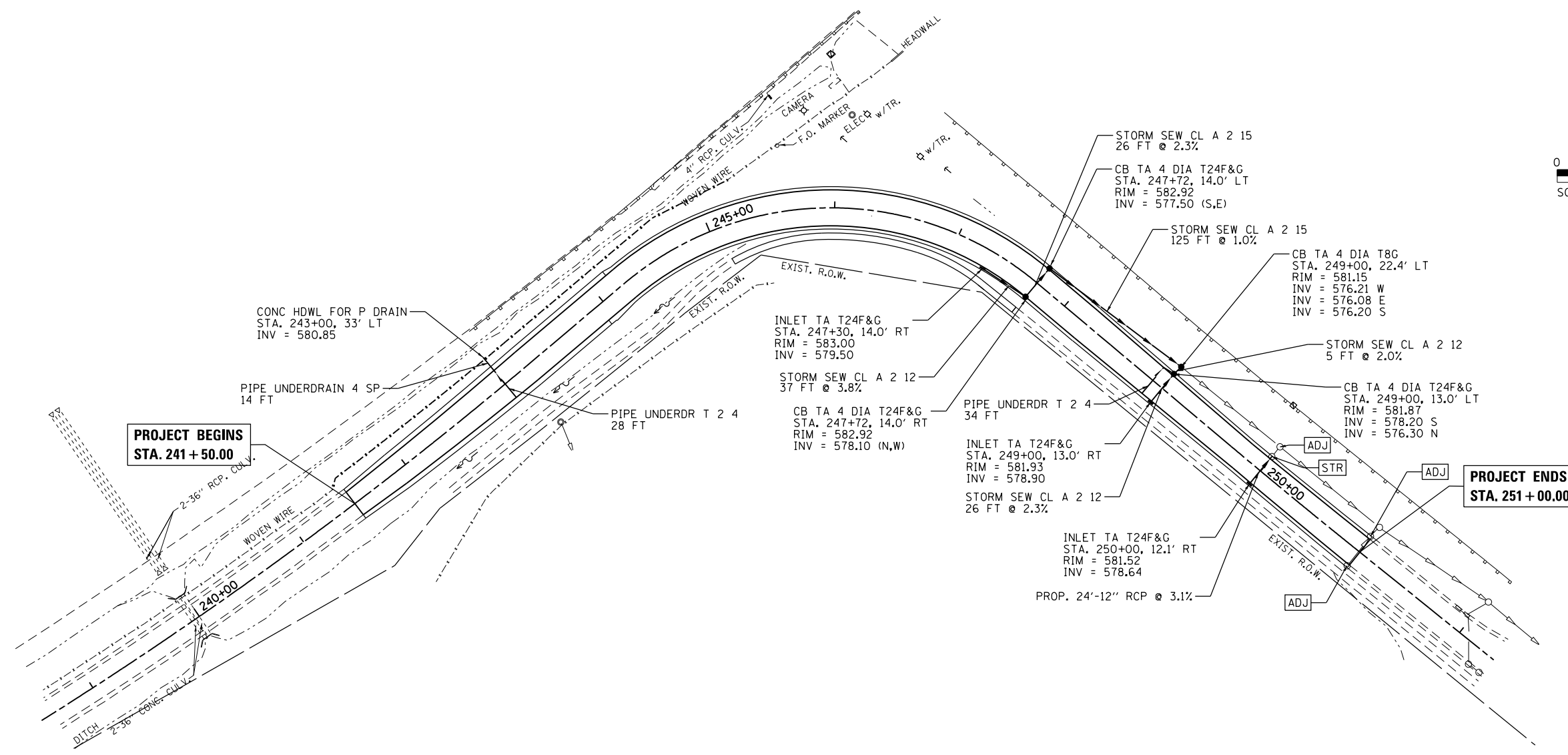
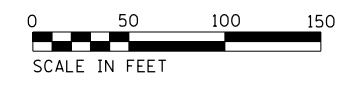
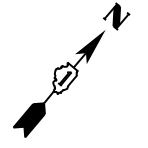


USER NAME = bhartm	DESIGNED -	REVISED -
	DRAWN - DMS	REVISED -
PLOT SCALE = 1"=50'	CHECKED -	REVISED -
PLOT DATE = 3/29/2017	DATE - 3/29/17	REVISED -

**STATE OF ILLINOIS
DEPARTMENT OF TRANSPORTATION**

EROSION CONTROL PLAN	
EAST FRONTAGE ROAD	
SCALE: 1"=50'	SHEET NO. 1 OF 1 SHEETS
STA.	TO STA.

F.A.I. RTE.	SECTION NO.	COUNTY	TOTAL SHEETS	SHEET NO.
55	99-2AC-3-R(16)	WILL	21	12
CONTRACT NO. 62C88				
FED. ROAD DIST. NO. ILLINOIS FED. AID PROJECT				



LEGEND:

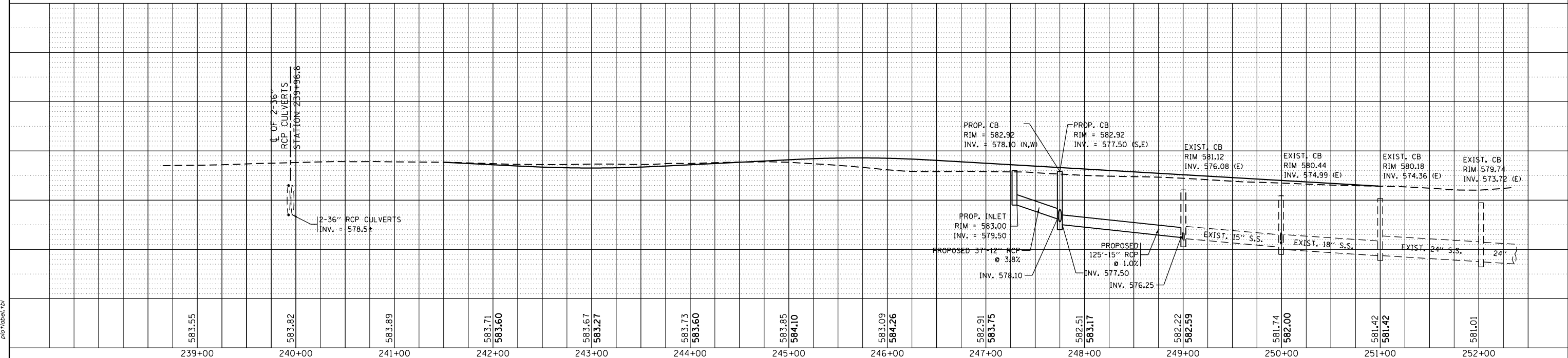
ADJ	FRAME AND GRATE TO BE ADJUSTED
STR	STRUCTURE TO BE ADJUSTED

PLAN

DATE	
BY	
SURVEYED	
PLOTTED	
ALIGNED	
CHECKED	
FILE NAME	
NO.	

PROFILE

DATE	
BY	
SURVEYED	
PLOTTED	
GRADES CHECKED	
STRUCTURE	
NOTATIS CHKD	
NO.	



HRG PROJECT NO.: 8660046.4
 HRG PROJ. CONTACT: D62C88-shr-arain-01.dgn
 FILE NAME: 8660046.4.dwg
 PEN TABLE: p01tbl.tbl



USER NAME = bharma	DESIGNED -	REVISED -
	DRAWN - DMS	REVISED -
PLOT SCALE = 1"=50'	CHECKED -	REVISED -
PLOT DATE = 3/29/2017	DATE - 3/29/17	REVISED -

**STATE OF ILLINOIS
DEPARTMENT OF TRANSPORTATION**

DRAINAGE & UTILITY PLAN AND PROFILE

EAST FRONTAGE ROAD

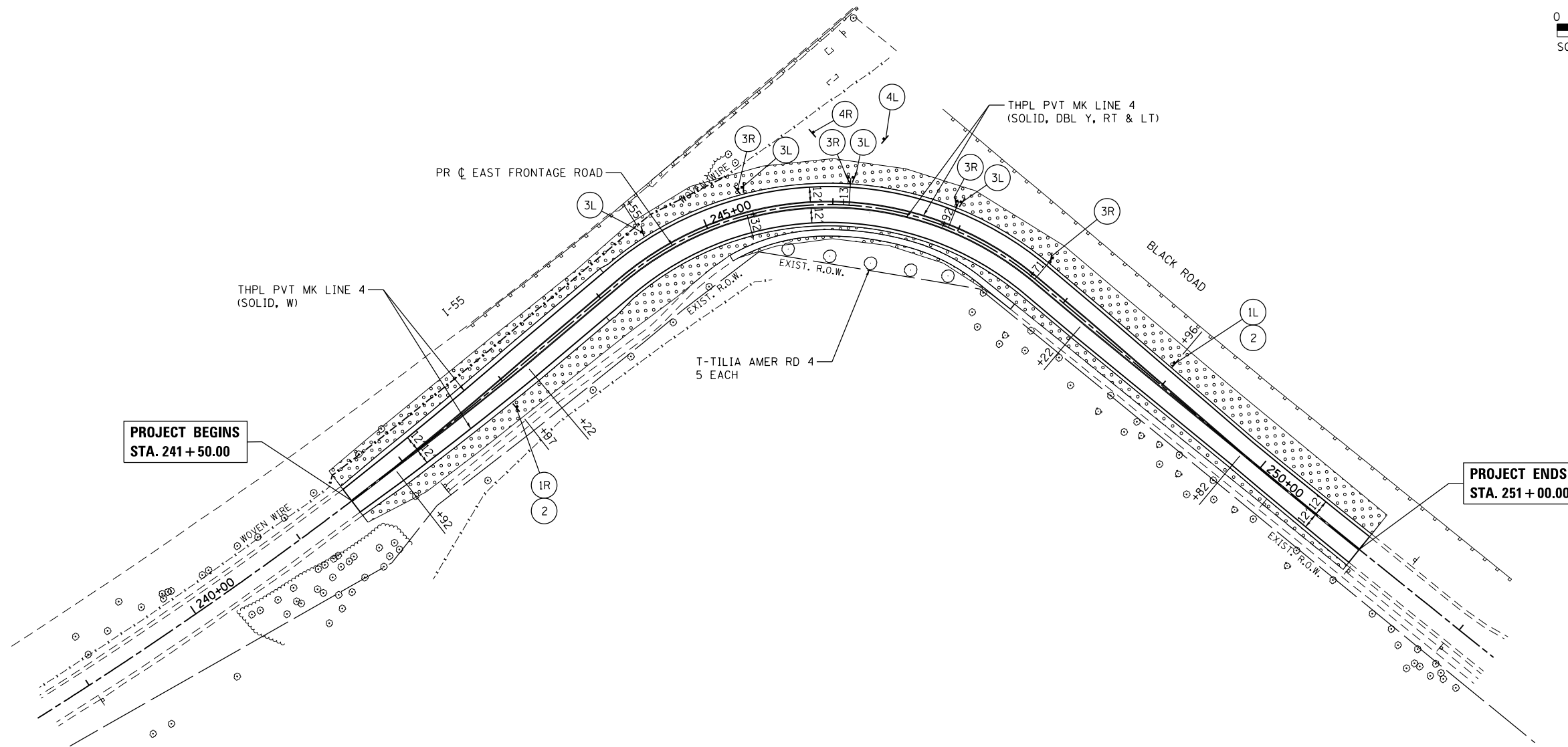
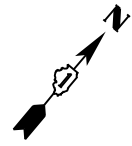
SCALE: 1"=50' SHEET NO. 1 OF 1 SHEETS STA. TO STA.

F.A.I. RTE. 55	SECTION NO. 99-2AC-3-R(16)	COUNTY WILL	TOTAL SHEETS 21	SHEET NO. 13
CONTRACT NO. 62C88				
FED. ROAD DIST. NO. ILLINOIS FED. AID PROJECT				

PLAN	SURVEYED	DATE
	PLOTTED	
	ALIGNED	
	CHECKED	
	BY	
	NO.	
	FILE NAME	
	ADD FILE NAME	

PROFILE	SURVEYED	DATE
	PLOTTED	
	GRADES CHECKED	
	STRUCTURE	
	NOT AT THIS OFFICE	
	NO.	
	FILE NAME	
	ADD FILE NAME	

HRG PROJECT NO.: 8650046.4
 HRG PROJ. CONTACT: D62C288-shr+ndscap-04.dgn
 FILE NAME: 8650046.4.dgn
 PEN TABLE: pen.tbl



①
W1-1
30" X 30"



②
W13-1P
18" X 18"



③
W1-8
18" X 24"



④
W1-6
48" X 24"

LEGEND:

(X) SEE SIGNING LEGEND

TOPSOIL F & P 6
SEEDING CL 2A



USER NAME = bhartma	DESIGNED -	REVISED -
	DRAWN - DMS	REVISED -
PLOT SCALE = 1"=50'	CHECKED -	REVISED -
PLOT DATE = 3/29/2017	DATE - 3/29/17	REVISED -

**STATE OF ILLINOIS
DEPARTMENT OF TRANSPORTATION**

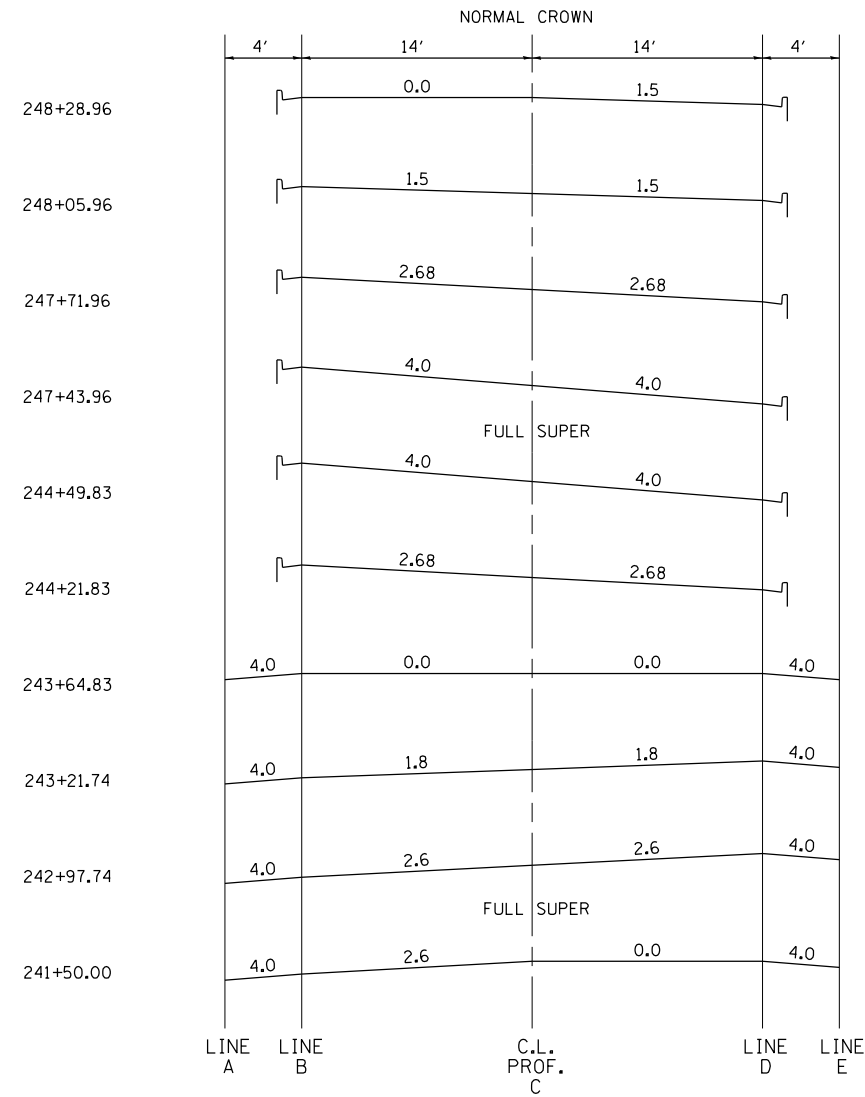
**PAVEMENT MARKING, SIGNING & LANDSCAPE PLAN
EAST FRONTAGE ROAD**

SCALE: 1"=50' SHEET NO. 1 OF 1 SHEETS STA. TO STA.

F.A.I. RTE.	SECTION NO.	COUNTY	TOTAL SHEETS	SHEET NO.
55	99-2AC-3-R(16)	WILL	21	14
CONTRACT NO. 62C88				
FED. ROAD DIST. NO. ILLINOIS FED. AID PROJECT				

PLAN	SURVEYED	DATE
NOTE BOOK NO.	PLOTTED	BY
	ALIGNED	
	CHECKED	
	FILE NAME	

PROFILE	SURVEYED	DATE
NOTE BOOK NO.	PLOTTED	BY
	GRADES CHECKED	
	STRUCTURE NOTATIONS CHECKED	



SUPERELEVATION TRANSITIONS							
STATION	SHLD WIDTH	ELEVATIONS AT LOCATIONS					SHLD WIDTH
		A	B	C	D	E	
NORMAL CROWN							
248+60.96	B-6.24	-	582.61	582.82	582.61	-	B-6.24
248+50.00	B-6.24	-	582.76	582.88	582.68	-	B-6.24
248+28.96	B-6.24	-	583.00	583.00	582.79	-	B-6.24
248+25.00	B-6.24	-	583.06	583.03	582.82	-	B-6.24
248+05.96	B-6.24	-	583.35	583.14	582.93	-	B-6.24
248+00.00	B-6.24	-	583.41	583.17	582.93	-	B-6.24
247+75.00	B-6.24	-	583.68	583.32	582.95	-	B-6.24
247+71.96	B-6.24	-	583.71	583.33	582.96	-	B-6.24
247+50.00	B-6.24	-	583.99	583.46	582.93	-	B-6.24
247+43.96	B-6.24	-	584.06	583.50	582.94	-	B-6.24
FULL SUPER							
244+49.83	B-6.24	-	584.41	583.85	583.29	-	B-6.24
244+25.00	B-6.24	-	584.13	583.73	583.33	-	B-6.24
244+21.83	B-6.24	-	583.93	583.70	583.47	-	B-6.24
244+00.00	4	583.70	583.86	583.60	583.34	583.18	4
243+75.00	4	583.39	583.55	583.48	583.41	583.25	4
243+50.00	4	583.15	583.31	583.36	583.41	583.25	4
243+25.00	4	582.93	583.09	583.29	583.49	583.33	4
243+00.00	4	582.77	582.93	583.27	583.61	583.45	4
242+97.74	4	582.76	582.92	583.27	583.62	583.46	4
FULL SUPER							
241+50.00	4	583.39	583.55	583.84	583.84	583.68	4

HRG PROJECT NO.: 8660046.4
 HRG PROJ. CONTACT: D62C88-sht-3C-detailed.dgn
 FILE NAME: 6/29/17
 PEN TABLE: p01tbl.tbl

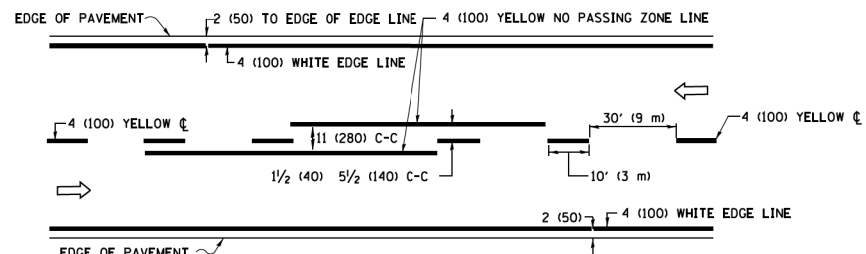


USER NAME = bhartma	DESIGNED -	REVISED -
	DRAWN - DMS	REVISED -
PLOT SCALE = NTS	CHECKED -	REVISED -
PLOT DATE = 3/29/2017	DATE - 3/29/17	REVISED -

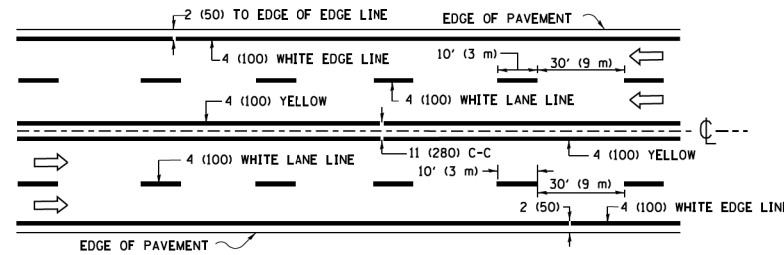
**STATE OF ILLINOIS
DEPARTMENT OF TRANSPORTATION**

SUPERELEVATION TRANSITION DIAGRAMS		
EAST FRONTAGE ROAD		
SCALE: NTS	SHEET NO. 1 OF 1 SHEETS	STA. TO STA.

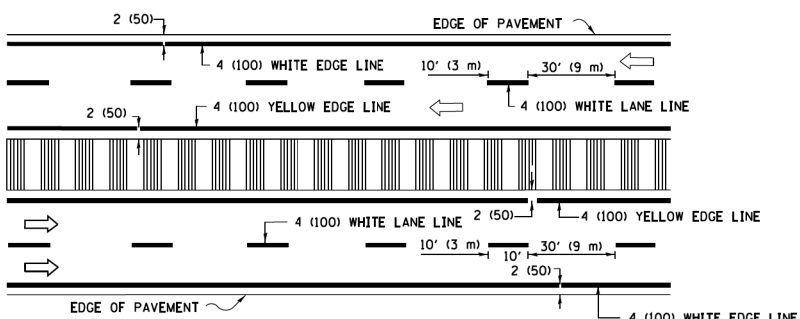
F.A.I. RTE. 55	SECTION NO. 99-2AC-3-R(16)	COUNTY WILL	TOTAL SHEETS 21	SHEET NO. 15
CONTRACT NO. 62C88				
FED. ROAD DIST. NO. ILLINOIS FED. AID PROJECT				



2-LANE ROADWAY

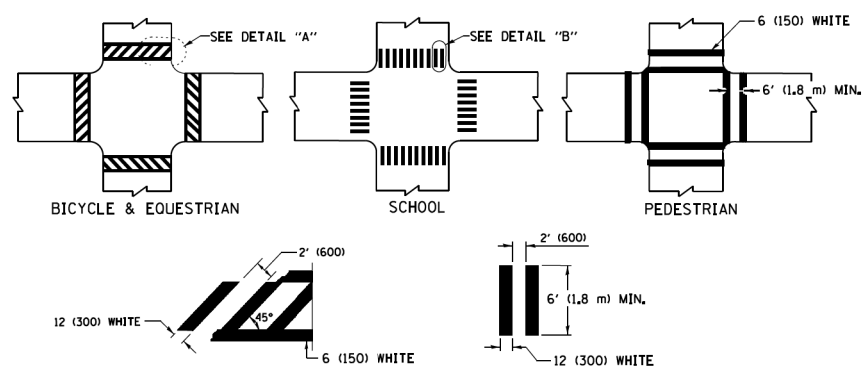


MULTI-LANE UNDIVIDED



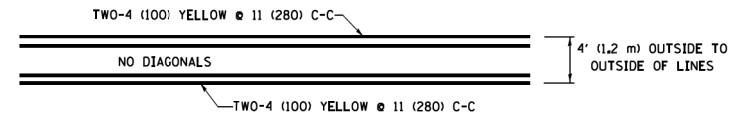
MULTI-LANE DIVIDED WITH MEDIAN

TYPICAL LANE AND EDGE LINE MARKING

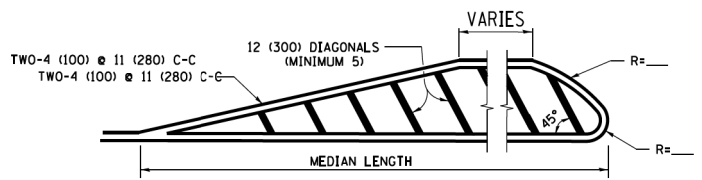


TYPICAL CROSSWALK MARKING

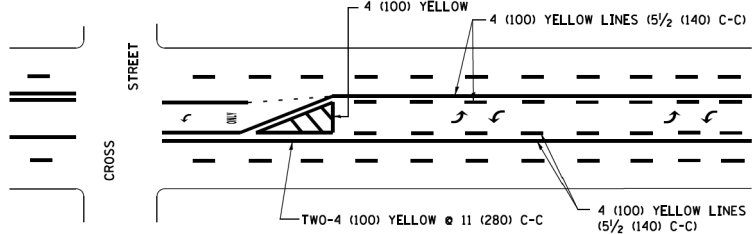
* MARKINGS SHALL BE INSTALLED PARALLEL TO THE CENTERLINE OF THE ROAD WHICH IT CROSSES



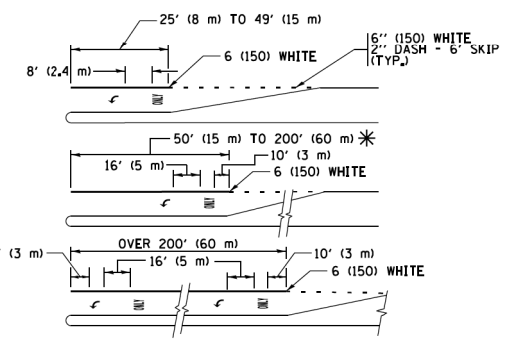
4' (1.2 m) WIDE MEDIANS ONLY



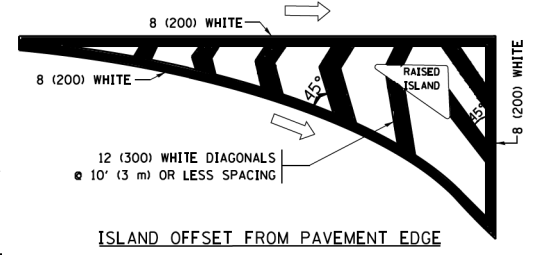
MEDIANS OVER 4' (1.2 m) WIDE



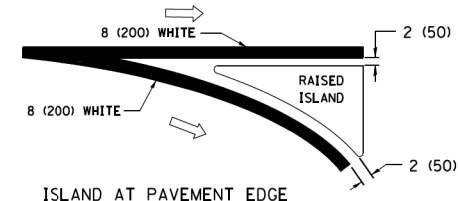
MEDIAN WITH TWO-WAY LEFT TURN LANE TYPICAL PAINTED MEDIAN MARKING



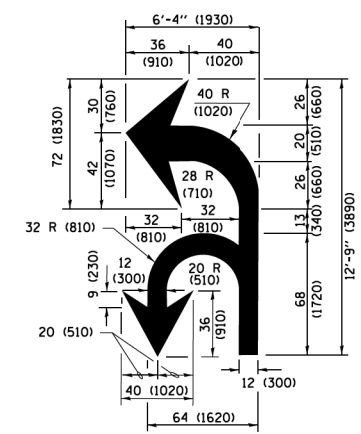
TYPICAL LEFT (OR RIGHT) TURN LANE TYPICAL TURN LANE MARKING



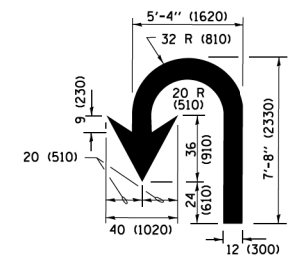
ISLAND OFFSET FROM PAVEMENT EDGE



ISLAND AT PAVEMENT EDGE TYPICAL ISLAND MARKING



COMBINATION LEFT AND U-TURN



U-TURN

LANE REDUCTION TRANSITION
* LANE REDUCTION ARROWS REQUIRED AT SPEEDS OF 45 MPH OR GREATER OR WHEN SPECIFIED IN PLANS.

D(FT)	SPEED LIMIT
345	30
425	35
500	40
580	45
665	50
750	55

TYPE OF MARKING	WIDTH OF LINE	PATTERN	COLOR	SPACING /REMARKS
CENTERLINE ON 2 LANE PAVEMENT	4 (100)	SKIP-DASH	YELLOW	10' (3 m) LINE WITH 30' (9 m) SPACE
CENTERLINE ON MULTI-LANE UNDIVIDED PAVEMENT	2 @ 4 (100)	SOLID	YELLOW	11 (280) C-C
NO PASSING ZONE LINES FOR ONE DIRECTION FOR BOTH DIRECTIONS	4 (100) 2 @ 4 (100)	SOLID SOLID	YELLOW YELLOW	5/2 (140) C-C FROM SKIP-DASH CENTERLINE 11 (280) C-C OMIT SKIP-DASH CENTERLINE BETWEEN
LANE LINES	4 (100) 5 (125) ON FREEWAYS	SKIP-DASH SKIP-DASH	WHITE WHITE	10' (3 m) LINE WITH 30' (9 m) SPACE
DOTTED LINES (EXTENSIONS OF CENTER, LANE OR TURN LANE MARKINGS)	SAME AS LINE BEING EXTENDED	SKIP-DASH	SAME AS LINE BEING EXTENDED	2' (600) LINE WITH 6' (1.8 m) SPACE
EDGE LINES	4 (100)	SOLID	YELLOW-LEFT WHITE-RIGHT	OUTLINE MEDIANS IN YELLOW
TURN LANE MARKINGS	6 (150) LINE; FULL SIZE LETTERS & SYMBOLS (8' (2.4m))	SOLID	WHITE	SEE TYPICAL TURN LANE MARKING DETAIL
TWO WAY LEFT TURN MARKING	2 @ 4 (100) EACH DIRECTION 8' (2.4m) LEFT ARROW	SKIP-DASH AND SOLID IN PAIRS	YELLOW WHITE	10' (3 m) LINE WITH 30' (9 m) SPACE FOR SKIP-DASH 5/2 (140) C-C BETWEEN SOLID LINE AND SKIP-DASH LINE SEE TYPICAL TWO-WAY LEFT TURN MARKING DETAIL
CROSSWALK LINES (PEDESTRIAN) A. DIAGONALS (BIKE & EQUESTRIAN) B. LONGITUDINAL BARS (SCHOOL)	2 @ 6 (150) 12 (300) @ 45° 12 (300) @ 90°	SOLID SOLID SOLID	WHITE WHITE WHITE	NOT LESS THAN 6' (1.8 m) APART 2' (600) APART 2' (600) APART SEE TYPICAL CROSSWALK MARKING DETAILS.
STOP LINES	24 (600)	SOLID	WHITE	PLACE 4' (1.2 m) IN ADVANCE OF AND PARALLEL TO CROSSWALK, IF PRESENT, OTHERWISE, PLACE AT DESIRED STOPPING POINT, PARALLEL TO CROSSROAD CENTERLINE, WHERE POSSIBLE
PAINTED MEDIANS	2 @ 4 (100) WITH 12 (300) DIAGONALS @ 45° NO DIAGONALS USED FOR 4' (1.2 m) WIDE MEDIANS	SOLID	YELLOW; TWO WAY TRAFFIC WHITE; ONE WAY TRAFFIC	11 (280) C-C FOR THE DOUBLE LINE SEE TYPICAL PAINTED MEDIAN MARKING.
CORE MARKING AND CHANNELIZING LINES	8 (200) WITH 12 (300) DIAGONALS @ 45°	SOLID	WHITE	DIAGONALS: 15' (4.5 m) C-C (LESS THAN 30MPH (50 km/h)) 20' (6 m) C-C (30 MPH (50 km/h) TO 45MPH (70 km/h)) 30' (9 m) C-C (OVER 45MPH (70 km/h))
RAILROAD CROSSING	24 (600) TRANSVERSE AREA OF "RR" IS 6' (1.8 m) LETTERS: 16 (400) LINE FOR "X"	SOLID	WHITE	SEE STATE STANDARD 780001
SHOULDER DIAGONALS (REQUIRED FOR SHOULDERS ≥ 8')	12 (300) @ 45°	SOLID	WHITE - RIGHT YELLOW - LEFT	50' (15 m) C-C (LESS THAN 30MPH (50 km/h)) 75' (25 m) C-C (30 MPH (50 km/h) TO 45MPH (70 km/h)) 150' (45 m) C-C (OVER 45MPH (70 km/h))
U TURN ARROW	SEE DETAIL	SOLID	WHITE	16.3 SF
2 ARROW COMBINATION LEFT AND U TURN	SEE DETAIL	SOLID	WHITE	30.4 SF

FOR FURTHER DETAILS ON PAVEMENT MARKING REFER TO STANDARD SPECIFICATIONS FOR ROAD AND BRIDGE CONSTRUCTION AND STATE STANDARD 780001.

All dimensions are in inches (millimeters) unless otherwise shown.

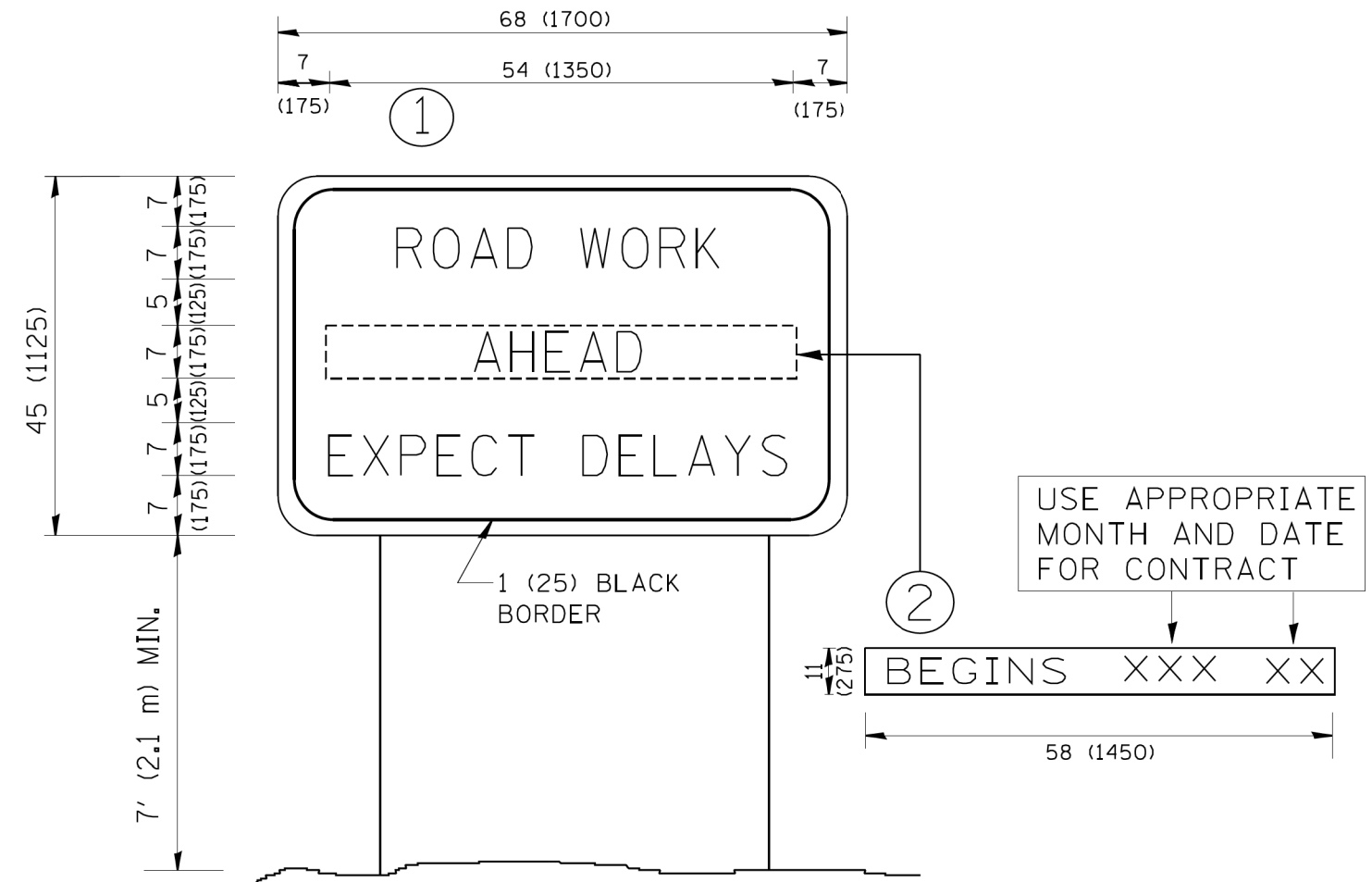
COMPANY NAME: #COMPANY NAME#
PROJECT CONTACT: #PROJECT CONTACT#
AREA OF PROJECT: #AREA OF PROJECT#
DATE PLOTTED: 3/29/2017 2:02:02 PM
FILE NAME: D:\62088\ent\ent\TC13.dgn
PLOT DRIVER: ILpdf.plt
PEN TABLE: plot.tbl

FILE NAME =	USER NAME = footemj	DESIGNED - EVERS	REVISED - C. JUCIUS 09-09-09
pwt\IL084EBID\INTEG\illinois.gov\PWIDOT\Documents\DOT Offices\District 1\Projects\Dist 1\CADData\CADsheets\tc13.dgn		CHECKED -	REVISED - C. JUCIUS 07-01-13
Default	PLOT SCALE = 50,000' / in	DATE - 03-19-90	REVISED - C. JUCIUS 12-21-15
	PLOT DATE = 4/13/2016		REVISED - C. JUCIUS 04-12-16

STATE OF ILLINOIS DEPARTMENT OF TRANSPORTATION

DISTRICT ONE		F.A. I. RTE.	SECTION	COUNTY	TOTAL SHEETS	SHEET NO.
TYPICAL PAVEMENT MARKINGS		55	99-2AC-3-R(16)	WILL	21	16
SCALE: NONE		TC-13		CONTRACT NO.	62C88	
SHEET 1 OF 1 SHEETS		ILLINOIS FED. AID PROJECT				

COMPANY NAME: *COMPANY NAME*
 PROJECT CONTACT: *PROJECT CONTACT*
 DATE PLOTTED: 3/29/2017 2:02:19 PM
 FILE NAME: D:\62088-snt-det-TC22.dgn
 PLOT DRIVER: IL_Pdf.plt
 PEN TABLE: plotabel.tbl



NOTES:

1. USE BLACK LETTERING ON ORANGE BACKGROUND.
2. ERECT SIGNS IN ADVANCE OF THE LOCATION FOR THE "ROAD CONSTRUCTION AHEAD" SIGN AT LOCATIONS AS DIRECTED BY THE ENGINEER.
3. ERECT SIGN ① WITH INSTALLED PANEL ② ONE WEEK PRIOR TO THE START OF CONSTRUCTION.
4. REMOVE PANEL ② SOON AFTER THE START OF CONSTRUCTION.
5. SEE SPECIAL PROVISION FOR "TEMPORARY INFORMATION SIGNING" FOR ADDITIONAL INFORMATION.
6. ONE SIGN ASSEMBLY EQUALS 25.70 SQ. FT. (2.3 SQ. M.)
7. SHALL BE PAID FOR AS TEMPORARY INFORMATION SIGNING.

ALL DIMENSIONS ARE IN INCHES (MILLIMETERS) UNLESS OTHERWISE SHOWN.

FILE NAME = W:\diststd\22x34\tc22.dgn	USER NAME = geglano	DESIGNED - DRAWN -	REVISED - R. MIRS 09-15-97 REVISED - R. MIRS 12-11-97
PLOT SCALE = 50.000' / IN.	CHECKED -	REVISED - T. RAMMACHER 02-02-99	
PLOT DATE = 1/4/2008	DATE -	REVISED - C. JUCIUS 01-31-07	

**STATE OF ILLINOIS
 DEPARTMENT OF TRANSPORTATION**

**ARTERIAL ROAD
 INFORMATION SIGN**

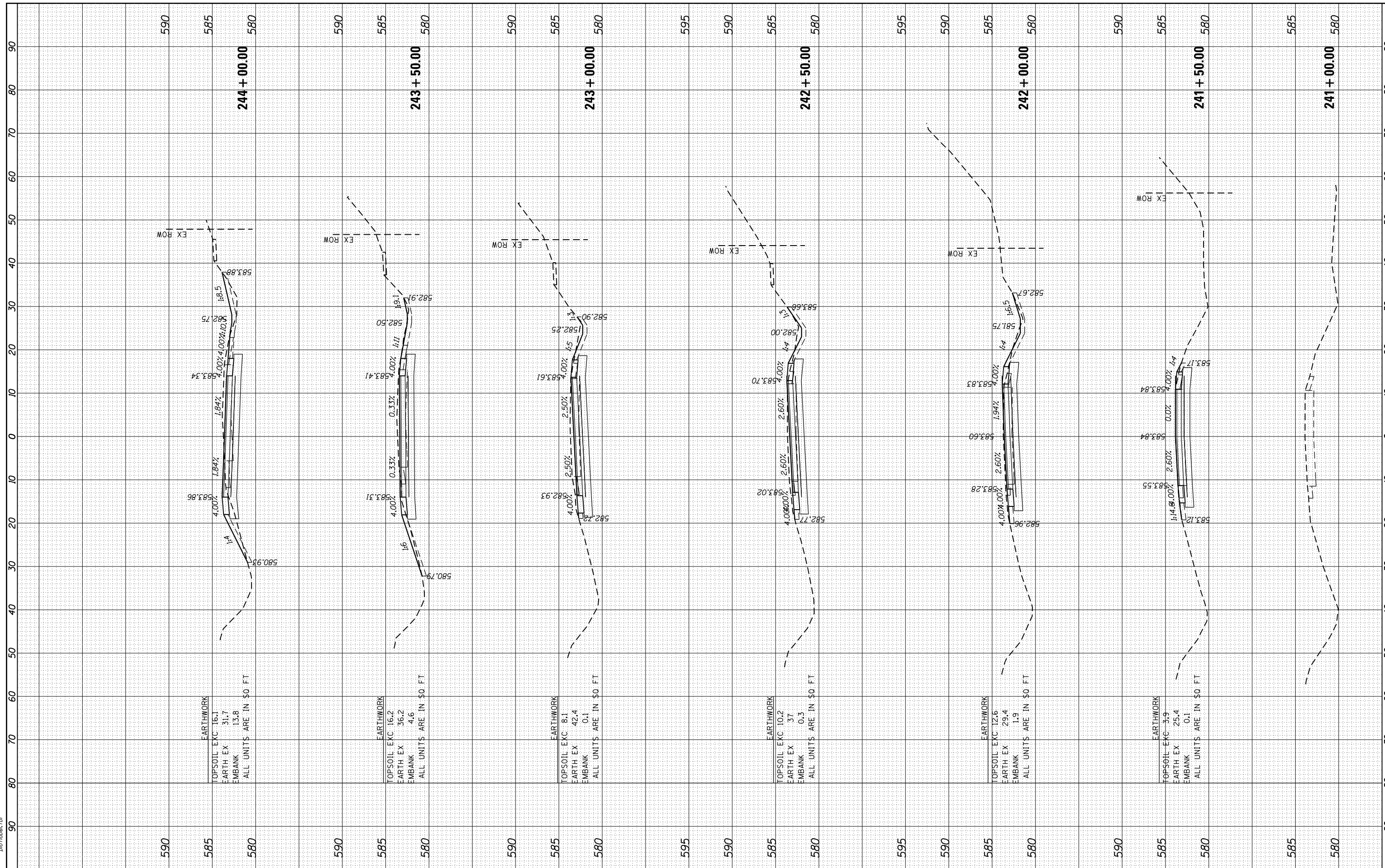
SCALE: NONE SHEET NO. 1 OF 1 SHEETS STA. TO STA.

F.A.I. RTE.	SECTION	COUNTY	TOTAL SHEETS	SHEET NO.
55	99-2AC-3-R(16)	WILL	21	17
TC-22			CONTRACT NO. 62C88	
FED. ROAD DIST. NO. 1 ILLINOIS FED. AID PROJECT				

FINAL SURVEY	SURVEYED	BY	DATE
NOTE BOOK	PLOTTED		
NO.	TEMPLATE		
	AREAS CHECKED		

ORIGINAL SURVEY	SURVEYED	BY	DATE
NOTE BOOK	PLOTTED		
NO.	TEMPLATE		
	AREAS CHECKED		

HRG PROJECT NO.: 8650046.4
 FILE NAME: 62C8R-01+500+1000
 PLOT DRIVER: ilpctd_awrptcfcg
 PEN TABLE: p01tblbrk.tbl



EARTHWORK
TOPSOIL EXC 16.1
EARTH EX 31.7
EMBANK 13.8
ALL UNITS ARE IN SQ FT

EARTHWORK
TOPSOIL EXC 16.2
EARTH EX 36.2
EMBANK 4.6
ALL UNITS ARE IN SQ FT

EARTHWORK
TOPSOIL EXC 8.1
EARTH EX 42.4
EMBANK 0.1
ALL UNITS ARE IN SQ FT

EARTHWORK
TOPSOIL EXC 10.2
EARTH EX 37
EMBANK 0.3
ALL UNITS ARE IN SQ FT

EARTHWORK
TOPSOIL EXC 12.6
EARTH EX 29.4
EMBANK 1.9
ALL UNITS ARE IN SQ FT

EARTHWORK
TOPSOIL EXC 3.9
EARTH EX 25.4
EMBANK 0.1
ALL UNITS ARE IN SQ FT



USER NAME = bhar-tna	DESIGNED -	REVISED -
PLOT SCALE = 10H+5V	DRAWN - DMS	REVISED -
PLOT DATE = 3/29/2017	CHECKED -	REVISED -
	DATE - 3/29/17	REVISED -

STATE OF ILLINOIS
 DEPARTMENT OF TRANSPORTATION

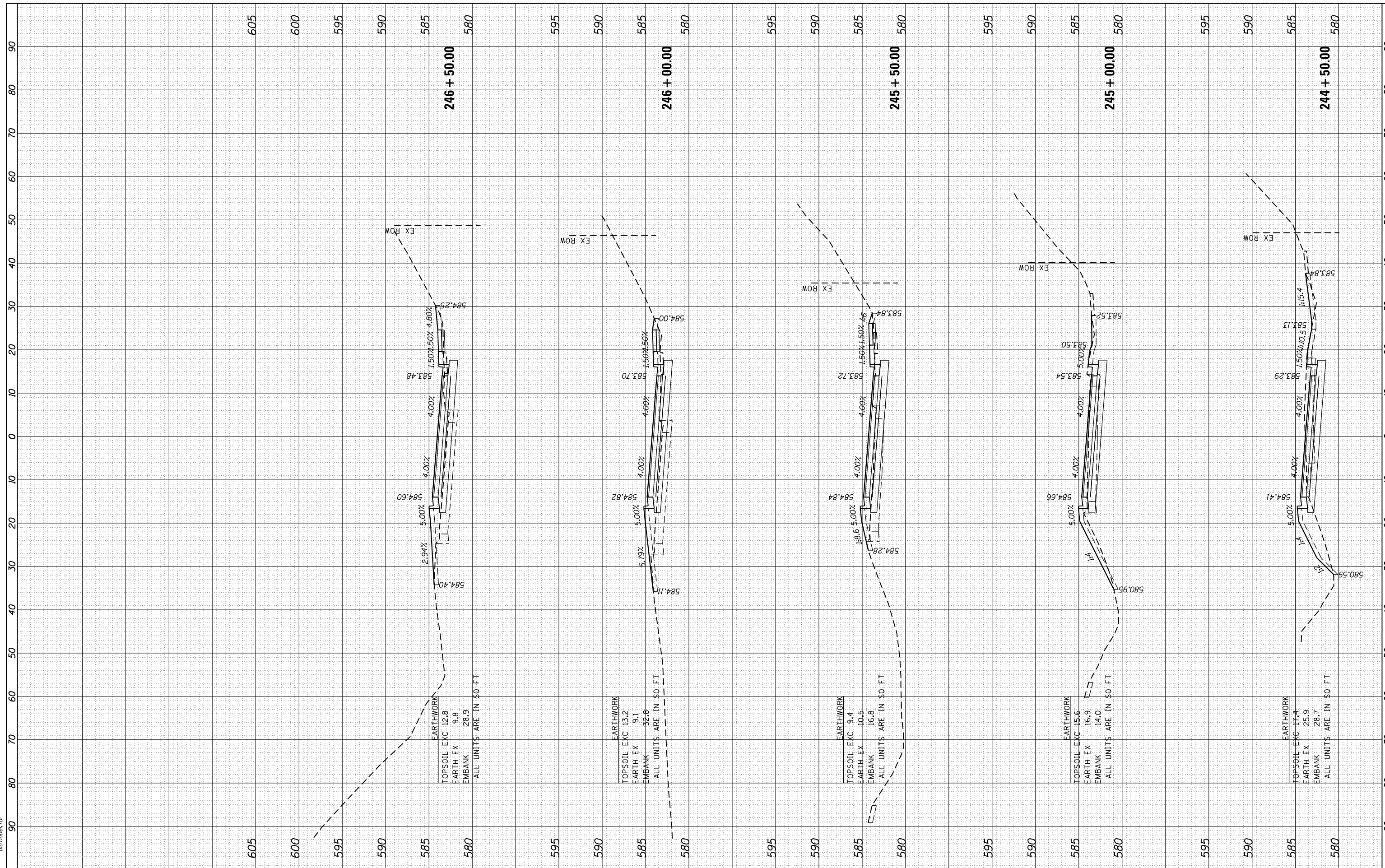
CROSS SECTIONS
 EAST FRONTAGE ROAD
 SCALE: 10H+5V SHEET NO. 1 OF 4 SHEETS STA. 241+00.00 TO STA. 244+00.00

F.A.I. RTE.	SECTION NO.	COUNTY	TOTAL SHEETS	SHEET NO.
55	99-2AC-3-R(16)	WILL	21	18
CONTRACT NO. 62C88				
FED. ROAD DIST. NO. ILLINOIS FED. AID PROJECT				

FINAL SURVEY NO.	SURVEYED BY	DATE
NO.	PLOTTED	
	TEMPLATE	
	AREAS	
	CHECKED	

ORIGINAL SURVEY NO.	SURVEYED BY	DATE
NO.	PLOTTED	
	TEMPLATE	
	AREAS	
	CHECKED	

HRG PROJECT NO.: 8650046.4
 FILE NAME: 062C8C-01+secty-mid.dgn
 PLOT DRIVER: ilpdfwrt.ctb
 PEN TABLE: plottbl.tbl



EARTHWORK
 TOPSOIL EXC 12.8
 EARTH EX 9.8
 EMBANK 28.9
 ALL UNITS ARE IN SQ FT

EARTHWORK
 TOPSOIL EXC 13.2
 EARTH EX 9.1
 EMBANK 32.8
 ALL UNITS ARE IN SQ FT

EARTHWORK
 TOPSOIL EXC 9.4
 EARTH EX 10.5
 EMBANK 16.8
 ALL UNITS ARE IN SQ FT

EARTHWORK
 TOPSOIL EXC 15.6
 EARTH EX 16.9
 EMBANK 14.0
 ALL UNITS ARE IN SQ FT

EARTHWORK
 TOPSOIL EXC 17.4
 EARTH EX 25.9
 EMBANK 28.7
 ALL UNITS ARE IN SQ FT



USER NAME = bhar-tno
 DESIGNED -
 DRAWN - DMS
 CHECKED -
 DATE - 3/29/17

REVISIONS
 REVISION NO. -
 REVISION DESCRIPTION -
 DATE -

STATE OF ILLINOIS
 DEPARTMENT OF TRANSPORTATION

CROSS SECTIONS
 EAST FRONTAGE ROAD

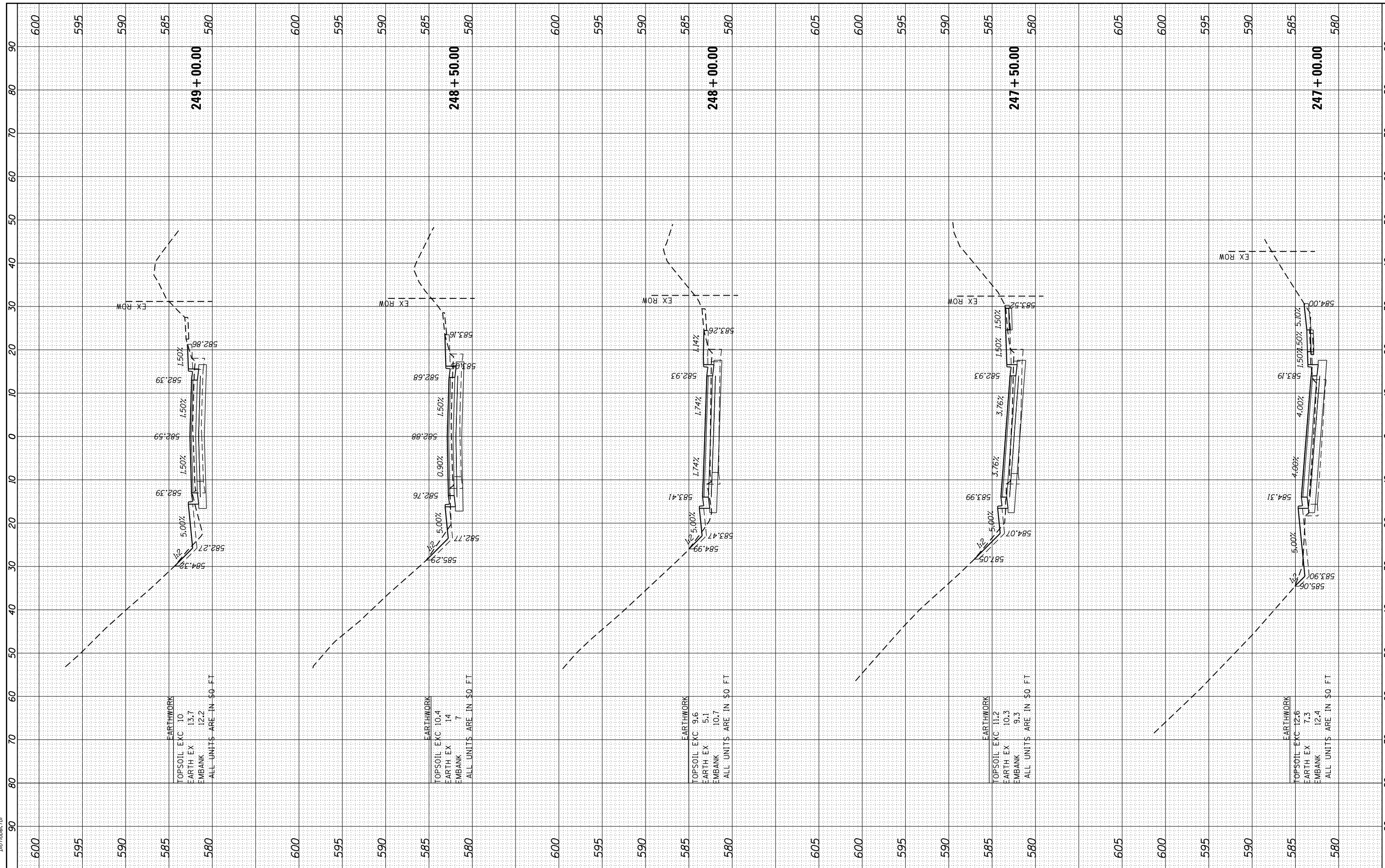
SCALE: 10H:5V SHEET NO. 2 OF 4 SHEETS STA. 244+50.00 TO STA. 246+50.00

F.A.I. RTE.	SECTION NO.	COUNTY	TOTAL SHEETS	SHEET NO.
55	99-2AC-3-R(16)	WILL	21	19
CONTRACT NO. 62C88				
FED. ROAD DIST. NO. ILLINOIS FED. AID PROJECT				

FINAL SURVEY NO.	SURVEYED	BY	DATE
NOTE BOOK NO.	PLOTTED		
AREAS CHECKED	TEMPLATE		
	AREAS CHECKED		

ORIGINAL SURVEY NO.	SURVEYED	BY	DATE
NOTE BOOK NO.	PLOTTED		
AREAS CHECKED	TEMPLATE		
	AREAS CHECKED		

HRG PROJECT NO.: 8650046.4
 FILE NAME: 62c8b-ep1+secty-mid.dgn
 PLOT DRIVER: ilpdfwrt.ctb
 PEN TABLE: plottbl.tbl



EARTHWORK
 TOPSOIL EXC 10
 EARTH EX 13.7
 EMBANK 12.2
 ALL UNITS ARE IN SQ. FT.

EARTHWORK
 TOPSOIL EXC 10.4
 EARTH EX 14
 EMBANK 7
 ALL UNITS ARE IN SQ. FT.

EARTHWORK
 TOPSOIL EXC 9.6
 EARTH EX 5.1
 EMBANK 10.7
 ALL UNITS ARE IN SQ. FT.

EARTHWORK
 TOPSOIL EXC 11.2
 EARTH EX 10.3
 EMBANK 9.3
 ALL UNITS ARE IN SQ. FT.

EARTHWORK
 TOPSOIL EXC 12.6
 EARTH EX 7.3
 EMBANK 12.4
 ALL UNITS ARE IN SQ. FT.

USER NAME	= bhar+na
DESIGNED	-
DRAWN	= DMS
CHECKED	-
DATE	= 3/29/17

REVISIONS	-
REVISIONS	-
REVISIONS	-
REVISIONS	-

**STATE OF ILLINOIS
 DEPARTMENT OF TRANSPORTATION**

**CROSS SECTIONS
 EAST FRONTAGE ROAD**

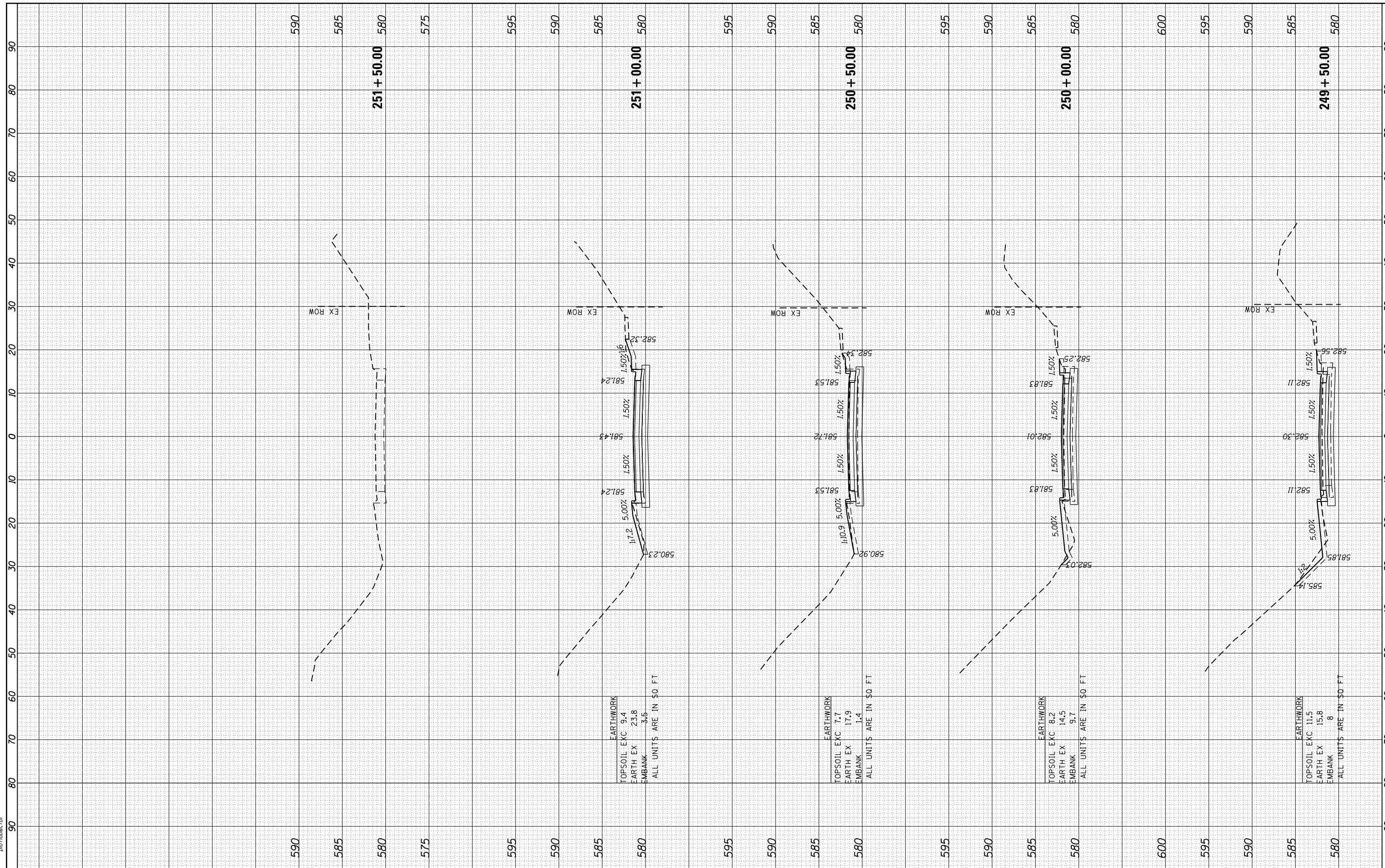
SCALE: 10H+5V SHEET NO. 3 OF 4 SHEETS STA. 247+00.00 TO STA. 249+00.00

F.A.I. RTE.	SECTION NO.	COUNTY	TOTAL SHEETS	SHEET NO.
55	99-2AC-3-R(16)	WILL	21	20
CONTRACT NO. 62C88				
FED. ROAD DIST. NO. ILLINOIS FED. AID PROJECT				

FINAL SURVEY NO.	SURVEYED	BY	DATE
NOTE BOOK NO.	PLOTTED		
	TEMPLATE		
	AREAS		
	CHECKED		

ORIGINAL SURVEY NO.	SURVEYED	BY	DATE
NOTE BOOK NO.	PLOTTED		
	TEMPLATE		
	AREAS		
	CHECKED		

HRG PROJECT NO.: 8650046.4
 FILE NAME: 62C8C-3-R(16)-EAST-FRONTAGE
 PLOT DRIVER: ilcpld_awrptcfcg
 PEN TABLE: p01tbltbl.tbl



EARTHWORK
 TOPSOIL EXC 9.4
 EARTH EX 23.8
 EMBANK 3.5
 ALL UNITS ARE IN SQ. FT.

EARTHWORK
 TOPSOIL EXC 7.7
 EARTH EX 17.9
 EMBANK 1.4
 ALL UNITS ARE IN SQ. FT.

EARTHWORK
 TOPSOIL EXC 8.2
 EARTH EX 14.5
 EMBANK 9.7
 ALL UNITS ARE IN SQ. FT.

EARTHWORK
 TOPSOIL EXC 11.5
 EARTH EX 15.8
 EMBANK 8
 ALL UNITS ARE IN SQ. FT.



USER NAME = bhar-tno	DESIGNED -	REVISED -
	DRAWN - DMS	REVISED -
PLOT SCALE = 10H:5V	CHECKED -	REVISED -
PLOT DATE = 3/29/2017	DATE - 3/29/17	REVISED -

STATE OF ILLINOIS
 DEPARTMENT OF TRANSPORTATION

CROSS SECTIONS
 EAST FRONTAGE ROAD
 SCALE: 10H:5V SHEET NO. 4 OF 4 SHEETS STA. 249+50.00 TO STA. 251+50.00

F.A.I. RTE.	SECTION NO.	COUNTY	TOTAL SHEETS	SHEET NO.
55	99-2AC-3-R(16)	WILL	21	21
CONTRACT NO. 62C88				
FED. ROAD DIST. NO. ILLINOIS FED. AID PROJECT				