

STATE OF ILLINOIS
DEPARTMENT OF TRANSPORTATION

F.A.U. RTE.	SECTION	COUNTY	TOTAL SHEETS	SHEET NO.
9629	(1,1X)RS-2	WILLIAMSON	17	1
		ILLINOIS	CONTRACT NO. 78570	

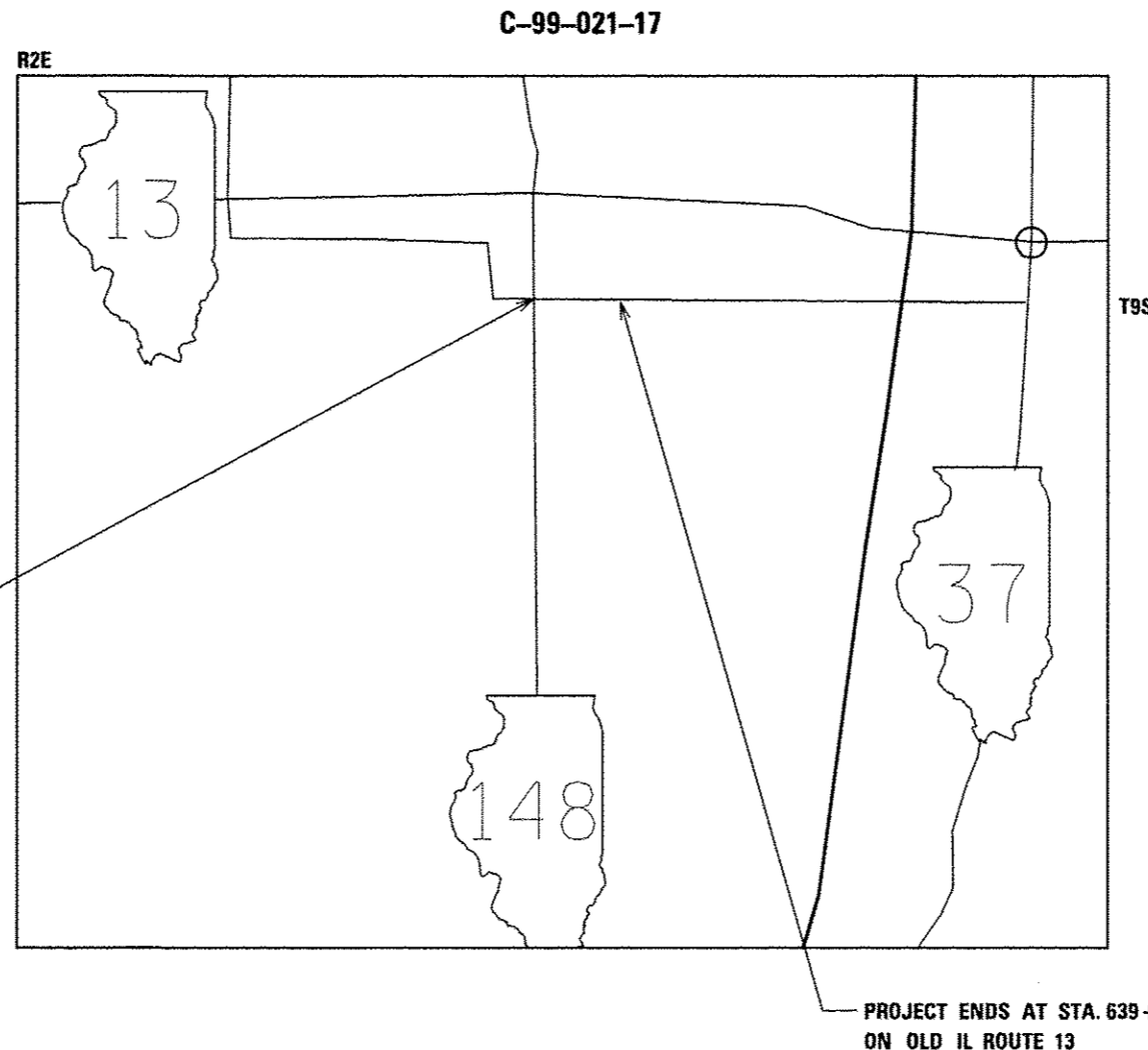
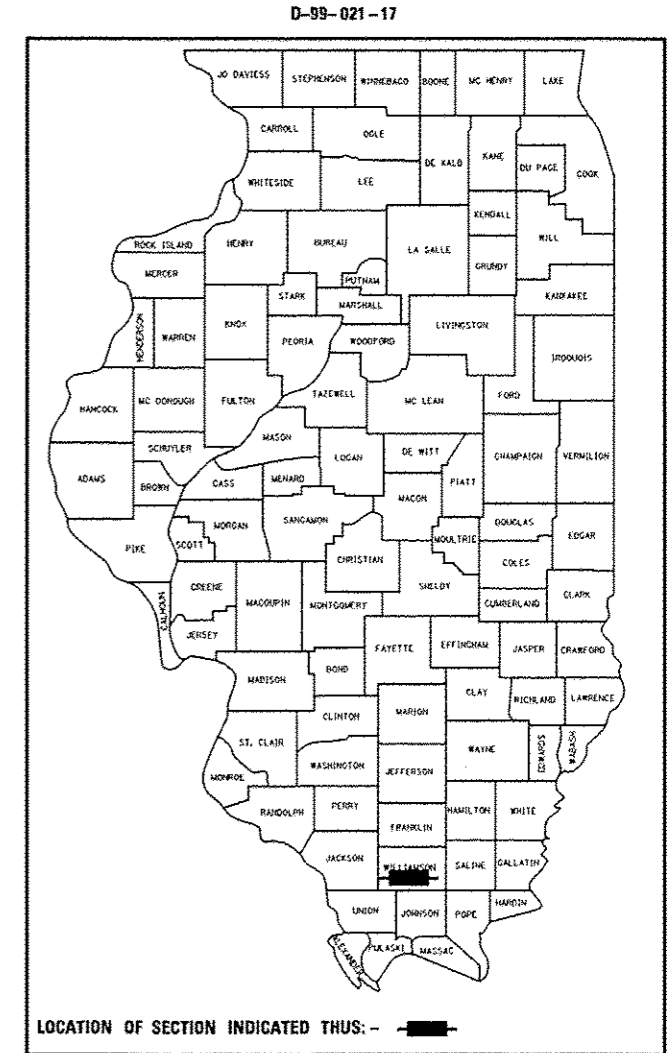
FOR INDEX OF SHEETS, SEE SHEET NO. 3
FOR SUMMARY OF QUANTITIES, SEE SHEET NO. 5-6

PROPOSED HIGHWAY PLANS

FAU 9629 (OLD IL ROUTE 13)
SECTION (1,1X)RS-2
PROJECT STP-9629(002)
PATCHING AND RESURFACING
WILLIAMSON COUNTY

TRAFFIC DATA

OLD IL ROUTE 13	
M.P.	(0.0-1.06)
(2017)	
PV =	5,230
SU =	605
MU =	125
ADT =	5,960
(2037)	
PV =	6,375
SU =	740
MU =	155
ADT =	7,270



TOWNSHIP
WEST MARION

DESIGN DESIGNATION : N.A.
COORDINATE SYSTEM : ILLINOIS EAST
POSTED SPEED : 50 MPH

J.U.L.I.E.
JOINT UTILITY LOCATION INFORMATION FOR EXCAVATION
1-800-892-0123
OR 811

PROJECT ENGINEER CHARLES STEIN (618) 351-5210
PROJECT DESIGNER AESHA JACKSON (618) 351-5215

CONTRACT NO. 78570

GROSS LENGTH = 5290 FT. = 1 MILE
NET LENGTH = 5290 FT. = 1 MILE

STATE OF ILLINOIS
DEPARTMENT OF TRANSPORTATION

SUBMITTED March 22 20 17
Gifford J. Pen
REGION FIVE ENGINEER

May 12 20 17
Hairneen M. Addis PE, BL
ENGINEER OF DESIGN AND ENVIRONMENT

May 12 20 17
David J. [Signature]
DIRECTOR OF PROGRAM DEVELOPMENT

**PRINTED BY THE AUTHORITY
OF THE STATE OF ILLINOIS**

FILE NAME =
 pm1\11084EBID\INTG\Illinois.gov\FIDOT\De
 pments\11DOT Offices\District 9\Proje
 cts\7857\Drawings\7857\7857.dgn
 USER NAME = jacksonae
 PLOT SCALE = 1/80,000 / in.
 PLOT DATE = 3/10/2017

DESIGNED -
 CHECKED -
 DATE -
 REVISED -
 REVISED -
 REVISED -

STATE OF ILLINOIS
 DEPARTMENT OF TRANSPORTATION

SCALE: SHEET OF SHEETS STA. TO STA.
 SIGNATURE SHEET
 E.A.L. FILE NO. 9629 SECTION 141XHS-2 COUNTY WILLIAMSON TOTAL SHEET NO. 17 SHEETS CONTRACT NO. 78570 ILLINOIS FED. AID PROJECT

Prepared By: *Lo J. S.*
 DISTRICT STUDIES & PLANS ENGINEER

Examined By: *Manuel Torres*
 DISTRICT LAND ACQUISITION ENGINEER

Examined By: *Carla Miller*
 DISTRICT PROGRAM DEVELOPMENT ENGINEER

Examined By: *Val Kelly*
 DISTRICT OPERATIONS ENGINEER

Examined By: *[Signature]*
 DISTRICT PROJECT IMPLEMENTATION ENGINEER

Examined By: *[Signature]*
 DISTRICT CONSTRUCTION ENGINEER

Examined By: *[Signature]*
 DISTRICT MATERIALS ENGINEER

INDEX OF SHEETS

SHEET NO.	DESCRIPTION
1	COVER SHEET
2	SIGNATURE SHEET
3 - 4	INDEX OF SHEETS, GENERAL NOTES, MIXTURE DESIGN, COMMITMENTS,
5 - 6	SUMMARY OF QUANTITIES
7	PAVEMENT MARKING SCHEDULE
8	OLD IL ROUTE 13 MAINLINE RESURFACING SCHEDULE
9 - 10	TYPICAL SECTION
11 - 14	DESIGN DETAILS FOR OLD IL ROUTE 13
15	BUTT JOINTS DETAIL AT RAMPS AND STRUCTURES
16	DETAILS FOR HMA TRANSITION UNDER STRUCTURES
17	UNEVEN LANE SIGN DETAIL AND ROUGH GROOVED SURFACE SIGNS

STANDARDS

000001-06	STANDARD SYMBOLS, ABBREVIATIONS AND PATTERNS
001006-	DECIMAL OF INCH AND FOOT
442201-03	CLASS C AND D PATCHES
701001-02	OFF-ROAD OPERATIONS 2L, 2W, MORE THAN 15 FT. (4.5 m) AWAY
701006-05	OFF ROAD OPERATIONS-2L, 2W-15 FT. TO EDGE OF PAVEMENT
701011-04	OFF ROAD MOVING OPERATIONS-2L, 2W-DAY ONLY
701301-04	LANE CLOSURE, 2L, 2W, SHORT TIME OPERATIONS
701306-03	LANE CLOSURE, 2L, 2W-SLOW MOVE OPERATIONS DAY ONLY ≤ 45 MPH
701311-03	LANE CLOSURE 2L, 2W- MOVING OPERATIONS DAY ONLY
701336-06	LANE CLOSURE, 2L, 2W, WORK AREAS IN SERIES FOR SPEEDS ≥ 45 MPH
701901-06	TRAFFIC CONTROL DEVICES
780001-05	TYPICAL PAVEMENT MARKINGS

COMMITMENTS

NONE

MIXTURE DESIGN

The following HMA mixture requirements are applicable for this project:

Locations	Hot-Mix Asphalt Shoulders (Top Lift)
Mixture Use(s):	Hot-Mix Asphalt Shoulders, IL-9.5L
AC/PG:	PG64-22
ABR % (Max):	See Special Provision
Design Air Voids:	4.0 %, 30 Gyration Design
Mixture Composition: (Gradation Mixture)	IL-9.5L
Friction Aggregate:	None
Mixture Weight:	112.0 lbs/sq.yd/in.
Quality Management Program:	QCQA
Sublot Size:	N/A
Number of Roller Passes ^{1/}	N/A

1/ When a number of roller passes is specified, the Contractor may opt to use intelligent compaction in lieu of density testing, under the Quality Control for Performance (QCP) program.

The following HMA mixture requirements are applicable for this project:

Locations	Hot-Mix Asphalt Surface Course
Mixture Use(s):	Hot-Mix Asphalt Surface Course, Mix D, N70
AC/PG:	PG64-22
ABR % (Max):	See Special Provision
Design Air Voids:	4.0 %, 70 Gyration Design
Mixture Composition: (Gradation Mixture)	IL-9.5mm
Friction Aggregate:	D Surface
Mixture Weight:	112.0 lbs/sq.yd/in.
Quality Management Program:	QCQA
Sublot Size:	N/A
Number of Roller Passes ^{1/}	N/A

1/ When a number of roller passes is specified, the Contractor may opt to use intelligent compaction in lieu of density testing, under the Quality Control for Performance (QCP) program.

SUMMARY OF QUANTITIES

COUNTY:	WILLIAMSON
ROUTE:	Old 13, FAU 9629
FUNDING:	80%FED20% STATE
LOCATION:	URBAN

CODE NUMBER	ITEM DESCRIPTION	UNIT	TOTAL QUANTITY	ROADWAY
				0005
40600635	LEVELING BINDER (MACHINE METHOD), N70	TON	630	630
40600990	TEMPORARY RAMP	SQ YD	27	27
40603340	HOT-MIX ASPHALT SURFACE COURSE, MIX "D", N70	TON	1,261	1,261
40700100	BITUMINOUS MATERIALS (TACK COAT)	POUND	12,129	12,129
44000155	HOT-MIX ASPHALT SURFACE REMOVAL, 1 1/2"	SQ YD	19,522	19,522
48203100	HOT-MIX ASPHALT SHOULDERS	TON	488	488
67100100	MOBILIZATION	LSUM	1	1
70100460	TRAFFIC CONTROL AND PROTECTION, STANDARD 701306	LSUM	1	1
70100600	TRAFFIC CONTROL AND PROTECTION, STANDARD 701336	LSUM	1	1
70300100	SHORT TERM PAVEMENT MARKING	FOOT	630	630
70300210	TEMPORARY PAVEMENT MARKING LETTERS AND SYMBOLS	SQ FT	32	32
70300220	TEMPORARY PAVEMENT MARKING - LINE 4"	FOOT	13,074	13,074
* 78001110	PAINT PAVEMENT MARKING - LINE 4"	FOOT	13,074	13,074
* 78100100	RAISED REFLECTIVE PAVEMENT MARKER	EACH	59	59

* SPECIALTY ITEM

FILE NAME *	USER NAME = jackson	DESIGNED -	REVISED -	STATE OF ILLINOIS DEPARTMENT OF TRANSPORTATION	SUMMARY OF QUANTITIES	F.A.U. RTE. 9629	SECTION 01XRS-2	COUNTY WILLIAMSON	TOTAL SHEETS 17	SHEET NO. 5
PLLOT SCALE = 1/8"=1'-0"	PLLOT DATE = 3/20/2017	CHECKED -	REVISED -		SCALE:	SHEET	OF	SHEETS	STA.	TO STA.
CONTRACT NO. 78570										

JUN 28 9AM

SUMMARY OF QUANTITIES - CONT

COUNTY:	WILLIAMSON
ROUTE:	Old 13, FAU 9629
FUNDING:	80%FED20% STATE
LOCATION:	URBAN
TOTAL QUANTITY	ROADWAY 0005

CODE NUMBER	ITEM DESCRIPTION	UNIT	TOTAL QUANTITY	ROADWAY
78300200	RAISED REFLECTIVE PAVEMENT MARKER REMOVAL	EACH	59	59
* 88600100	DETECTOR LOOP, TYPE I	FOOT	37	37
X7030005	TEMPORARY PAVEMENT MARKING REMOVAL	SQ FT	4,509	4,509

* SPECIALTY ITEM

PAVEMENT MARKING SCHEDULE

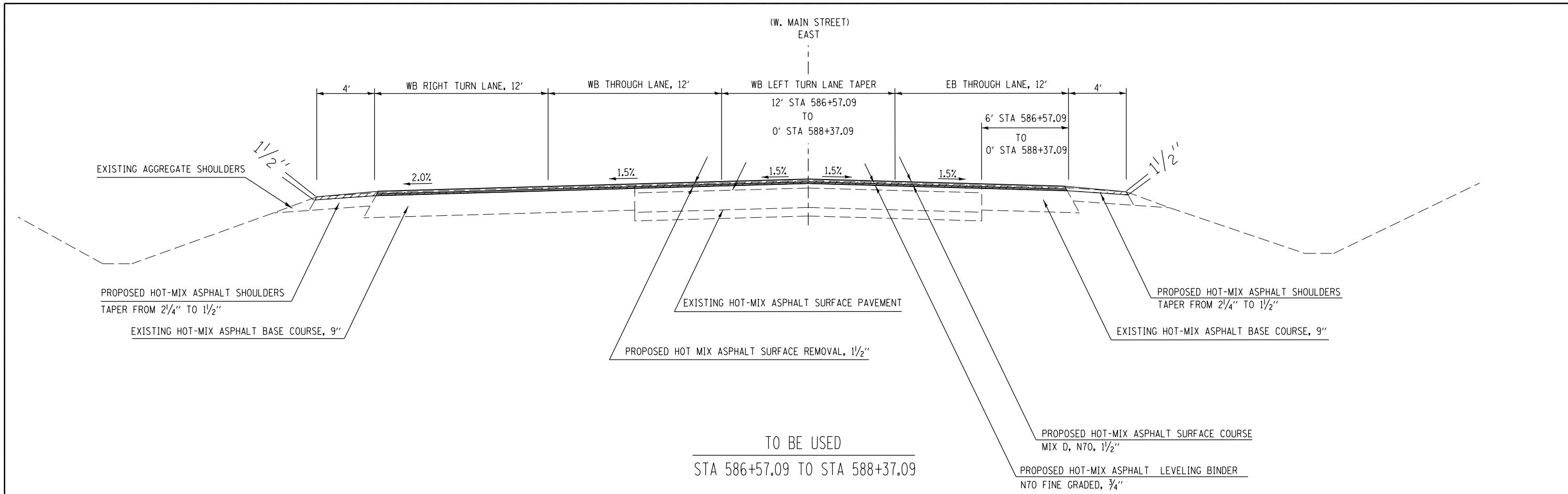
OLD IL ROUTE 13 WEST MAIN STREET LOCATION STATION TO STATION STA TO STA	LENGTH FEET	DESCRIPTION	PAINT PAVEMENT MARKING				LETTERS AND SYMBOLS SQ FT	SHORT TERM PVMT MRK FT	TEMP PVMT MRK 4" FT	WORK ZONE PAVT MK REM SQ FT	RAISED REF PVMT MKR EACH	RAISED REF PVMT MKR REMOVAL EACH
			SOLID WHITE 4" FT	LINE - YELLOW 4"								
				LEFT SOLID FT	CENTER DASHED FT	RIGHT SOLID FT						
MAIN STREET URBAN SECTION												
STA 586+57.09 TO STA 592+00.00	543	HMA	1266	480	273	480	32	65	2499	855		
STA 592+00.00 TO STA 597+00.00	500	HMA	1000		125			60	1125	395	6	6
STA 597+00.00 TO STA 603+00.00	600	HMA	1200		150			72	1350	474	8	8
STA 603+00.00 TO STA 608+00.00	500	HMA	1000		125			60	1125	395	6	6
STA 608+00.00 TO STA 613+00.00	500	HMA	1000		125			60	1125	395	6	6
STA 613+00.00 TO STA 618+00.00	500	HMA	1000		125			60	1125	395	6	6
STA 618+00.00 TO STA 623+00.00	500	HMA	1000		125			60	1125	395	6	6
STA 623+00.00 TO STA 628+00.00	500	HMA	1000		125			60	1125	395	6	6
STA 628+00.00 TO STA 639+00.00	1100	HMA	2200		275			132	2475	869	14	14
PROJECT TOTALS			10666	480	1448	480	32	630	13074	4568	59	59

13074

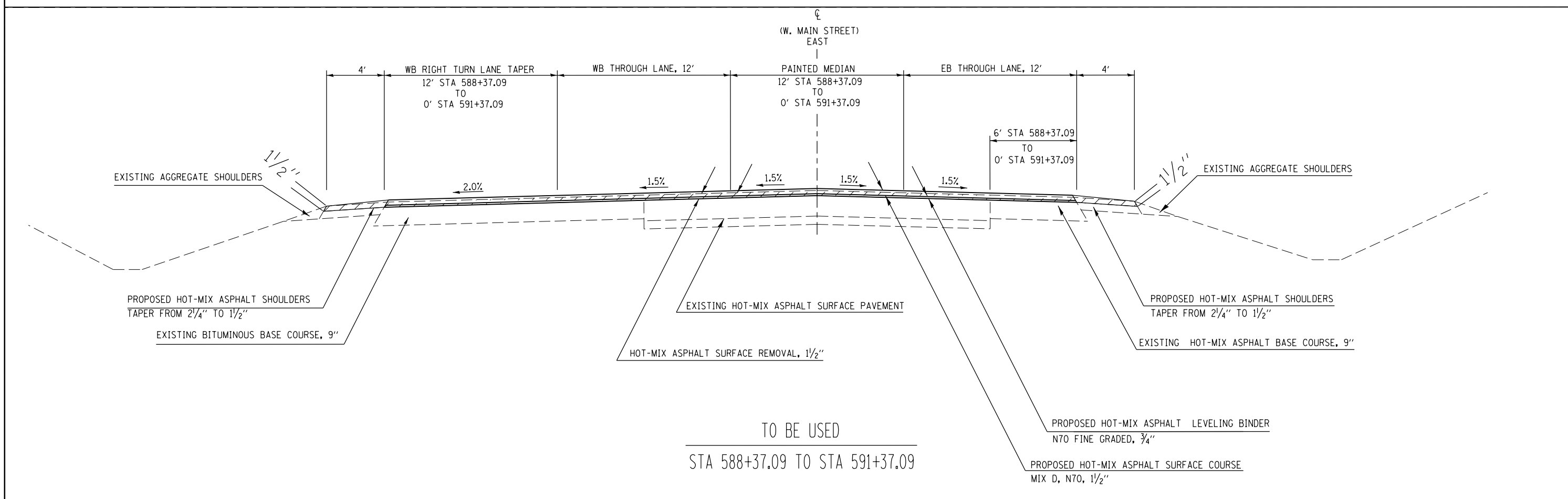
WEST MAIN STREET (OLD IL ROUTE 13) MAINLINE RESURFACING SCHEDULE

LOCATION STATION TO STATION				LENGTH	ROADWAY WIDTH	SHOULDER WIDTH	HOT-MIX ASP. SURF. REMOV. - BUTT JT.	TEMP RAMP	HMA SUR. REMOV. 1 1/2"	HOT-MIX ASP. SUR. CSE., MIX D, N 70 (1 1/2")	LEVELING BINDER (MM) N70 (3/4")	BIT. MAT. (TACK COAT)	HMA SHOULDERS	NOTES
				FOR INFORMATIONAL PURPOSE ONLY										
				(FT)	(FT)	(FT)								
MAINLINE: STA. 586+57.05 TO STA. 639+00														
	586+57.05	TO	588+37.09				187	13						
LT	586+57.05	TO	588+37.09	180	24	4			560	41	21	360	8	
RT	586+57.05	TO	588+37.09	180	24	4			560	41	21	360	8	
	588+37.09	TO	591+37.09											
LT	588+37.09	TO	591+37.09	300	18	4			733	51	26	465	14	
RT	588+37.09	TO	591+37.09	300	18	4			733	51	26	465	14	
	591+37.09	TO	610+00.00											
LT	591+37.09	TO	610+00.00	1863	12	4			3312	211	105	2,049	87	
RT	591+37.09	TO	610+00.00	1863	12	4			3312	211	105	2,049	87	
	610+00.00	TO	630+00.00											
LT	610+00.00	TO	630+00.00	2000	12	4			3556	226	112	2,200	93	
RT	610+00.00	TO	630+00.00	2000	12	4			3556	226	112	2,200	93	
	630+00.00	TO	639+00.00											
LT	630+00.00	TO	639+00.00	900	12	4			1,600	102	51	990	42	
RT	630+00.00	TO	639+00.00	900	12	4	107	13	1,600	102	51	990	42	
MAINLINE TOTALS							293	27	19,522	1,261	630	12,129	488	

*** NOTE: ADDITIONAL QUANTITY INCLUDED FOR LOW SHOULDERS.**

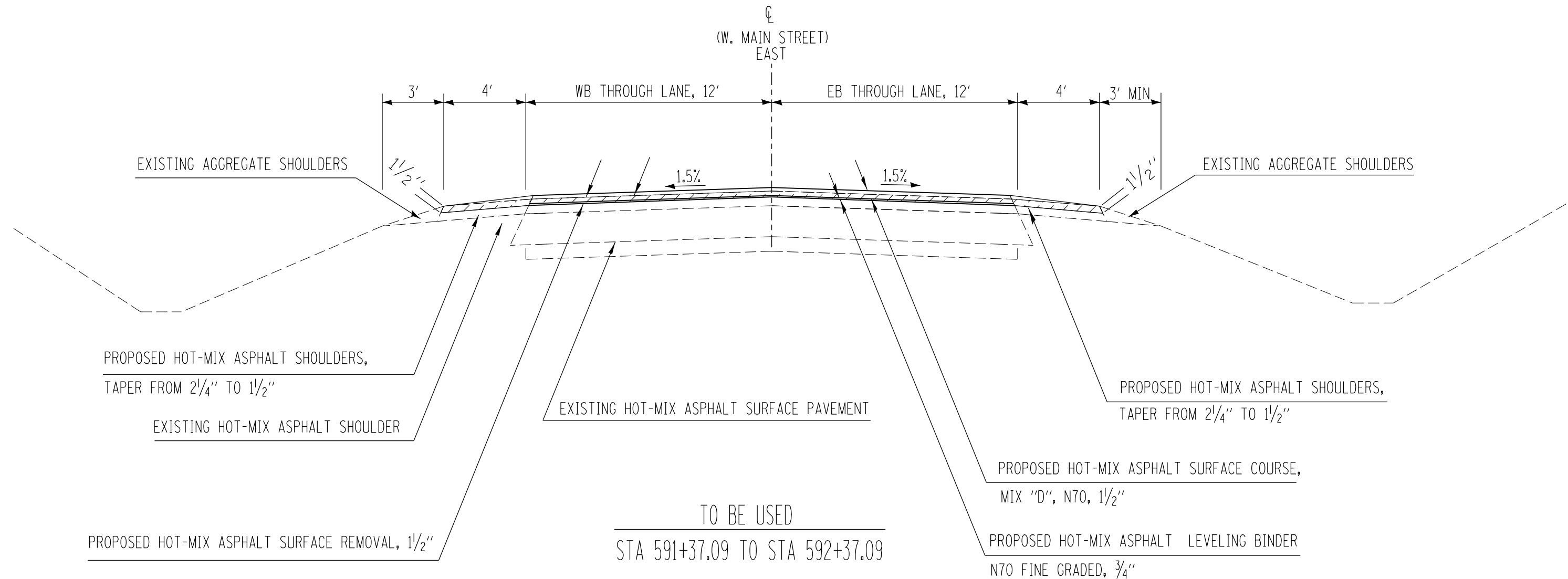


TO BE USED
 STA 586+57.09 TO STA 588+37.09



TO BE USED
 STA 588+37.09 TO STA 591+37.09

FILE NAME =	USER NAME = jacksonec	DESIGNED -	REVISED -	STATE OF ILLINOIS DEPARTMENT OF TRANSPORTATION	TYPICAL SECTION	F.A.U. RTE.	SECTION	COUNTY	TOTAL SHEETS	SHEET NO.	
Default	Documents\DOT Offices\District 9\Projects\78570\CAD\Drawings\CABsheets\78570.dgn	CHECKED -	REVISED -			9629	(1,1X)RS-2	WILLIAMSON	17	9	
	PLOT SCALE = 101.3448' / in.	DATE -	REVISED -			CONTRACT NO. 78570					
	PLOT DATE = 3/23/2017					ILLINOIS FED. AID PROJECT					

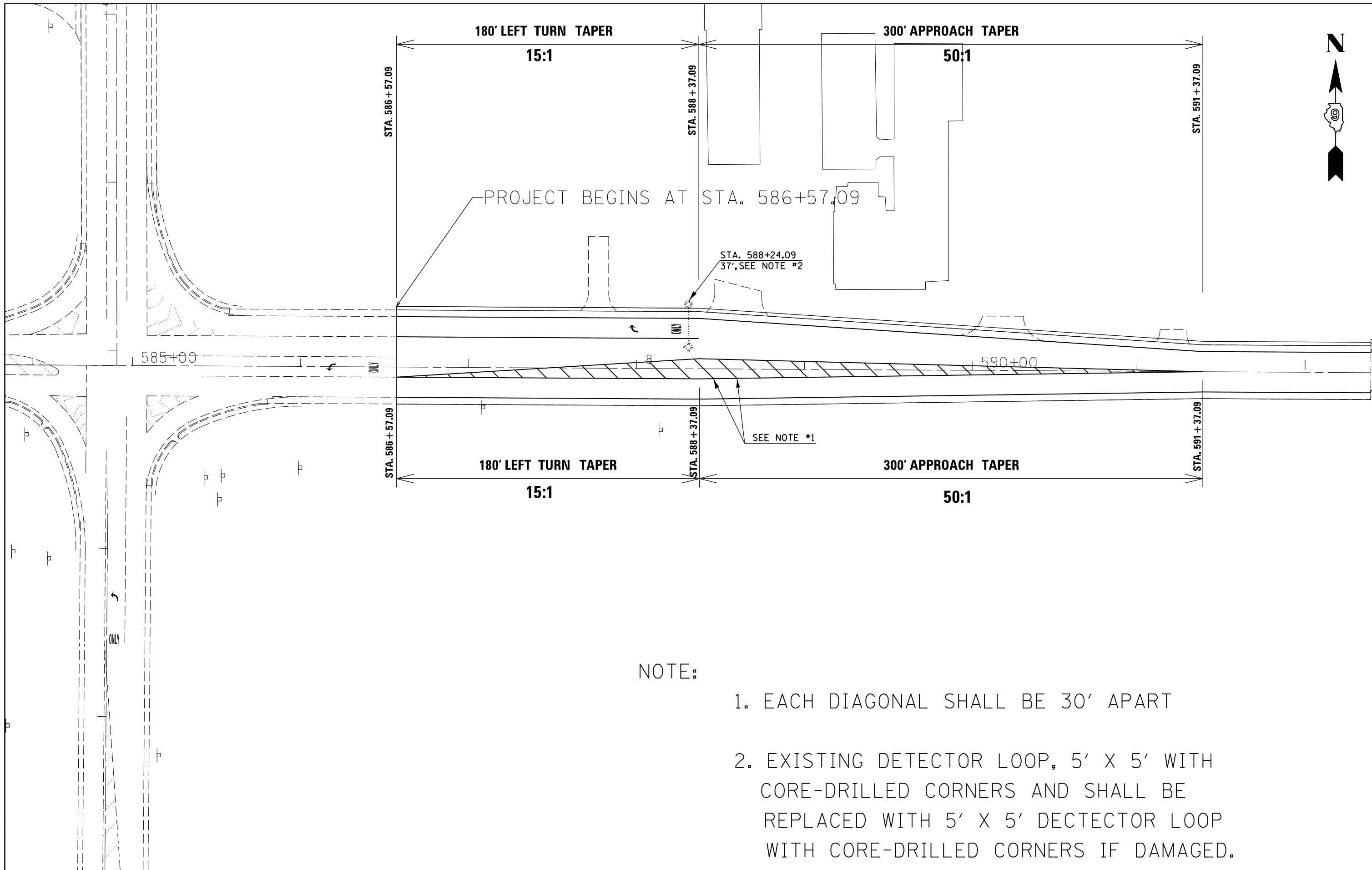


FILE NAME =	USER NAME = jacksonec	DESIGNED -	REVISED -
p:\11\084EBIDINTEG.illinois.gov\PIWIDOT\Documents\DOT Offices\District 9\Projects\78570\Drawings\CAD\Sheets\78570.dgn		CHECKED -	REVISED -
Default	PLOT DATE = 3/23/2017	DATE -	REVISED -

**STATE OF ILLINOIS
DEPARTMENT OF TRANSPORTATION**

TYPICALS SECTION			
SCALE:	SHEET	OF SHEETS	STA. TO STA.

F.A.U. RTE.	SECTION	COUNTY	TOTAL SHEETS	SHEET NO.
9629	(1,1)XRS-2	WILLIAMSON	17	10
CONTRACT NO. 78570			ILLINOIS FED. AID PROJECT	



NOTE:

1. EACH DIAGONAL SHALL BE 30' APART
2. EXISTING DETECTOR LOOP, 5' X 5' WITH CORE-DRILLED CORNERS AND SHALL BE REPLACED WITH 5' X 5' DETECTOR LOOP WITH CORE-DRILLED CORNERS IF DAMAGED.

FILE NAME =	USER NAME = jacksonec	DESIGNED -	REVISED -	STATE OF ILLINOIS DEPARTMENT OF TRANSPORTATION	DESIGN DETAILS FOR OLD IL ROUTE 13				F.A.U. RTE.	SECTION	COUNTY	TOTAL SHEETS	SHEET NO.
pw:\IL\084EBIDINTEG\illinois.gov\PWIDOT\Documents\DOT Offices\District 9\Projects\78570\Drawings\CAD\Sheets\78570.dgn	PLLOT SCALE = 100.0000' / in.	CHECKED -	REVISED -						9629	(1,1)XRS-2	WILLIAMSON	17	11
Default	PLOT DATE = 3/23/2017	DATE -	REVISED -		SCALE: SHEET OF SHEETS STA. TO STA.				ILLINOIS FED. AID PROJECT				
CONTRACT NO. 78570													



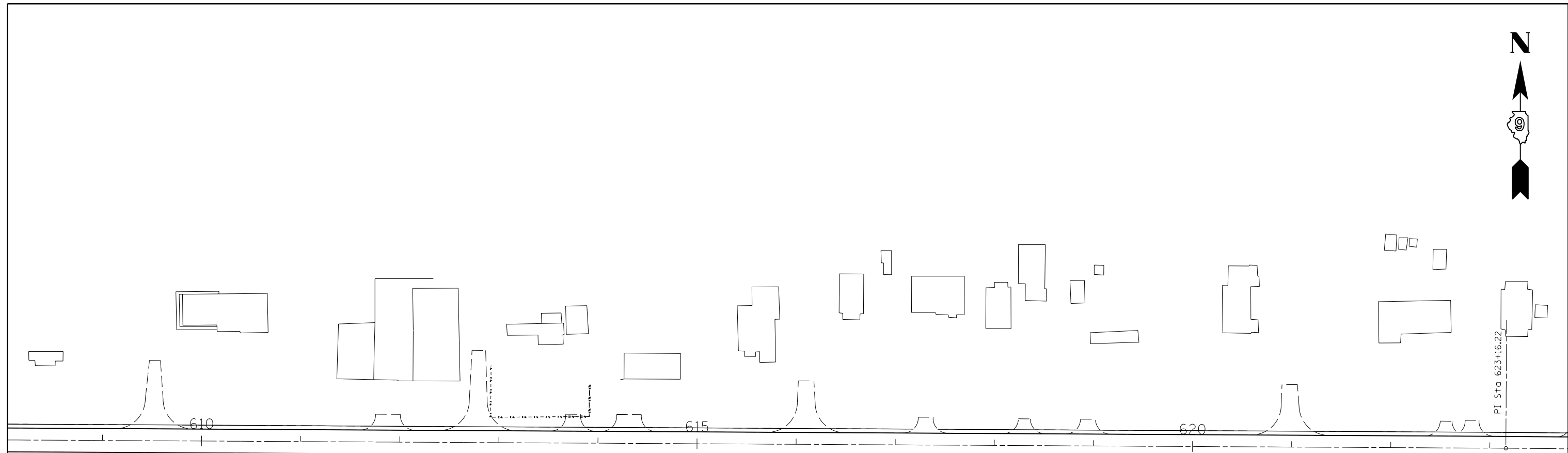
FILE NAME =	USER NAME = jacksonec	DESIGNED -	REVISED -
p:\11\084EBIDINTEG.illinois.gov\PIWIDOT\Documents\IDOT Offices\District 9\Projects\78570\CAD\Drawings\CADsheets\78570.dgn		CHECKED -	REVISED -
Default	PLOT SCALE = 100.0000' / in.	DATE -	REVISED -
	PLOT DATE = 3/23/2017		

**STATE OF ILLINOIS
DEPARTMENT OF TRANSPORTATION**

DESIGN DETAILS FOR OLD IL ROUTE 13

SCALE: SHEET OF SHEETS STA. TO STA.

F.A.U. RTE.	SECTION	COUNTY	TOTAL SHEETS	SHEET NO.
9629	(1,1)XRS-2	WILLIAMSON	17	12
ILLINOIS FED. AID PROJECT			CONTRACT NO. 78570	



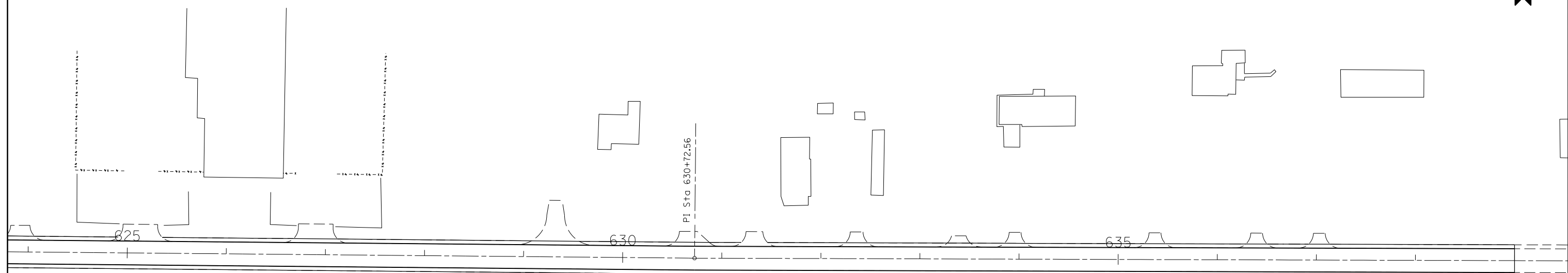
FILE NAME =	USER NAME = jacksonec	DESIGNED -	REVISED -
p:\11\084EBIDINTEG.illinois.gov\PI\DOT\Documents\DOT Offices\District 9\Projects\78570\Drawings\CAD\Sheets\78570.dgn		CHECKED -	REVISED -
Default	PLOT SCALE = 100.0000' / in.	DATE -	REVISED -
	PLOT DATE = 3/23/2017		

**STATE OF ILLINOIS
DEPARTMENT OF TRANSPORTATION**

DESIGN DETAILS FOR OLD IL ROUTE 13

SCALE: SHEET OF SHEETS STA. TO STA.

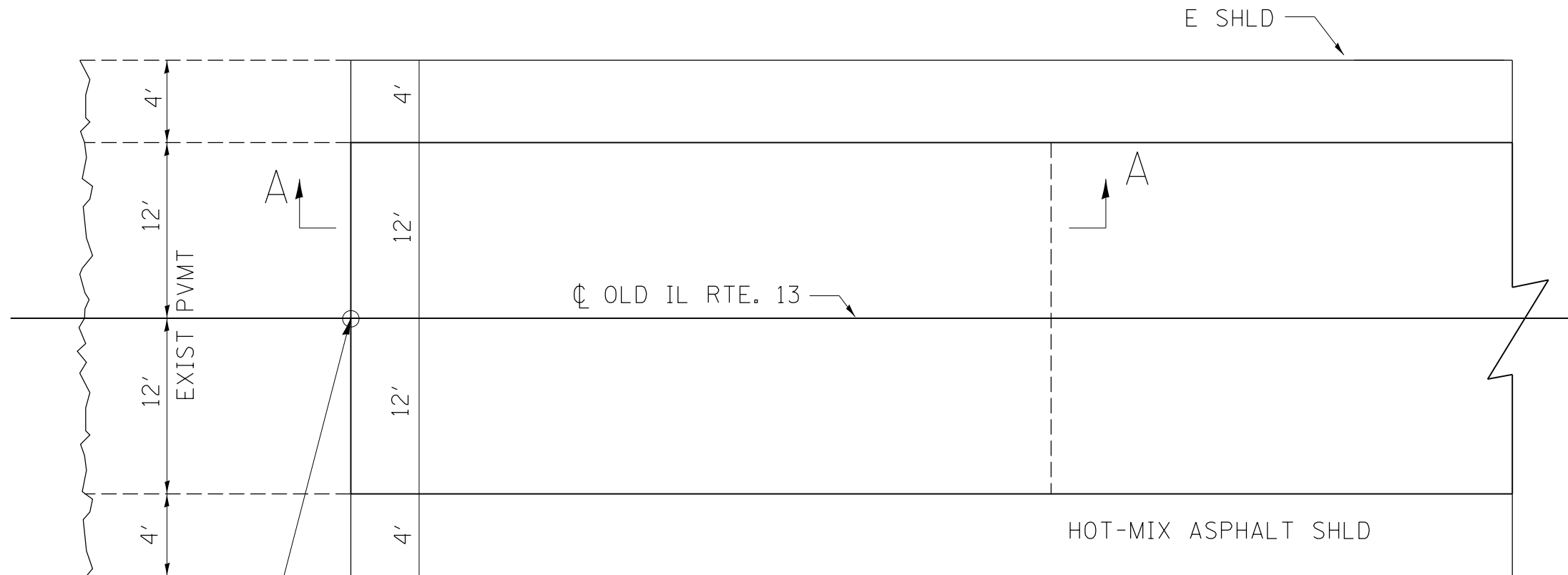
F.A.U. RTE.	SECTION	COUNTY	TOTAL SHEETS	SHEET NO.
9629	(1,1)XRS-2	WILLIAMSON	17	13
CONTRACT NO. 78570				
ILLINOIS FED. AID PROJECT				



PROJECT ENDS AT STA. 639+00
WEST RADIUS RETURN PENTECOST ROAD

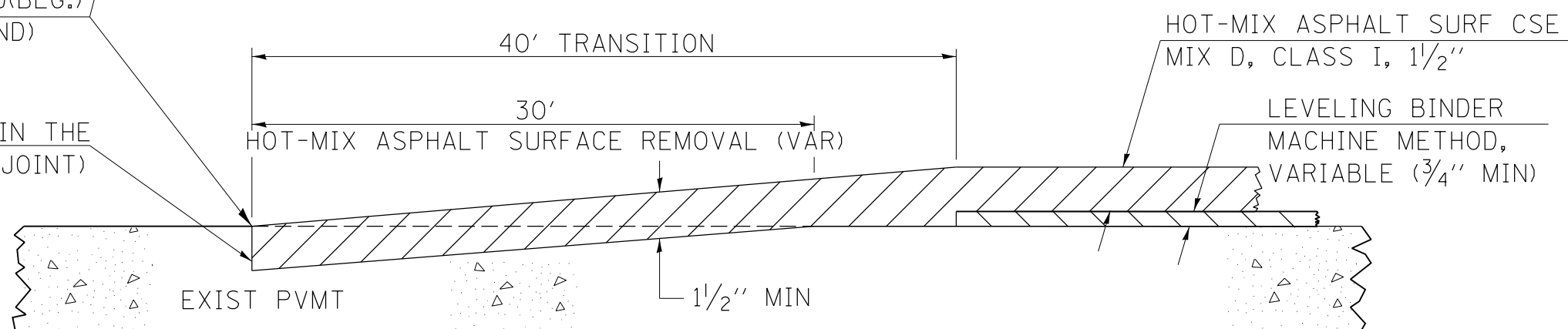
FILE NAME =	USER NAME = jacksonec	DESIGNED -	REVIS	STATE OF ILLINOIS DEPARTMENT OF TRANSPORTATION	DESIGN DETAILS FOR OLD IL ROUTE 13			F.A.U. RTE.	SECTION	COUNTY	TOTAL SHEETS	SHEET NO.
pw:\IL\084EBIDINTEG.illinois.gov\PWIDOT\Documents\IDOT Offices\District 9\Projects\78570\CAD\Drawings\CADsheets\78570.dgn	DRAWN	REVIS	REVIS					9629	(1,1)XRS-2	WILLIAMSON	17	14
Default	PLOT SCALE = 100.0000' / in.	CHECKED -	REVIS		SCALE: SHEET OF SHEETS STA. TO STA.			CONTRACT NO. 78570				
	PLOT DATE = 3/23/2017	DATE -	REVIS		ILLINOIS FED. AID PROJECT							

BUTT JOINT



STA 586+57.09(BEG.)
STA 639+00(END)

SAW CUT (INCLUDED IN THE
COST OF THE BUTT JOINT)



REVISIONS

DRAWN	10-17-90
REVISED	01-11-07
REVISED	3-25-08
REVISED	5-17-13
REVISED	02-17-17

STD. 9-86

FILE NAME =	USER NAME = jacksonec	DESIGNED -	REVISED -
pw:\IL\084EBIDINTEG\illinois.gov\PWIDOT\Documents\DOT Offices\District 9\Projects\78570\Drawings\CAD\Sheets\78570.dgn		DRAWN -	REVISED -
Default	PLOT SCALE = 100.0000' / 1in.	CHECKED -	REVISED -
	PLOT DATE = 3/23/2017	DATE -	REVISED -

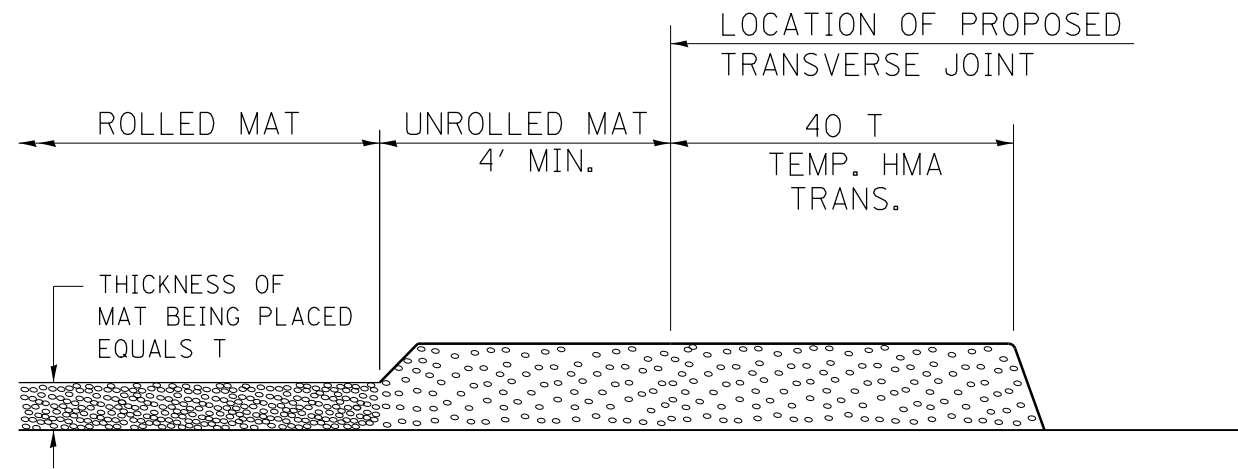
**STATE OF ILLINOIS
DEPARTMENT OF TRANSPORTATION**

BUTT JOINT DETAILS AT RAMPS AND STRUCTURES

SCALE: SHEET OF SHEETS STA. TO STA.

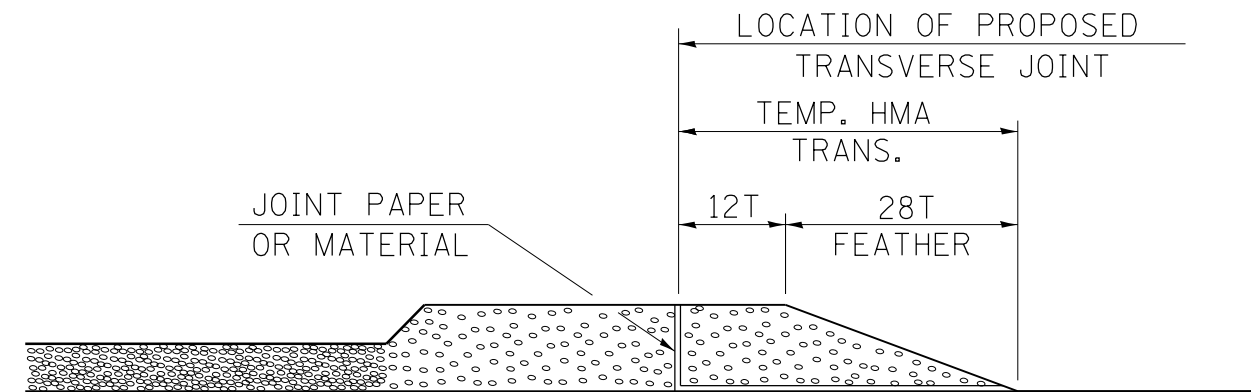
F.A.U. RTE.	SECTION	COUNTY	TOTAL SHEETS	SHEET NO.
9629	(1,1)XRS-2	WILLIAMSON	17	15
CONTRACT NO. 78570				
ILLINOIS FED. AID PROJECT				

TEMPORARY HOT-MIX ASPHALT TRANSITIONS



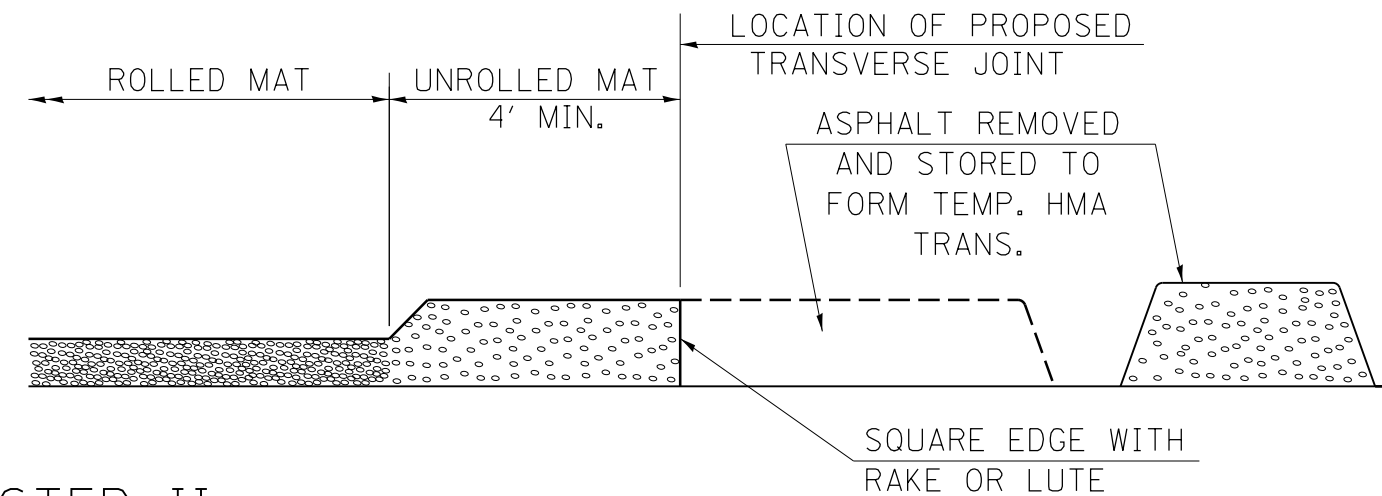
STEP I

1. PLACE HOT-MIX ASPHALT MAT, LENGTH 40 TIMES THE THICKNESS OF THE MAT BEING PLACED PAST THE PROPOSED TRANSVERSE JOINT LOCATION USING NORMAL OPERATING PROCEDURES.
2. EXTREME CARE SHOULD BE TAKEN TO MAINTAIN ENOUGH MATERIAL IN FRONT OF THE SCREED TO MAINTAIN REQUIRED PAVING DEPTH.



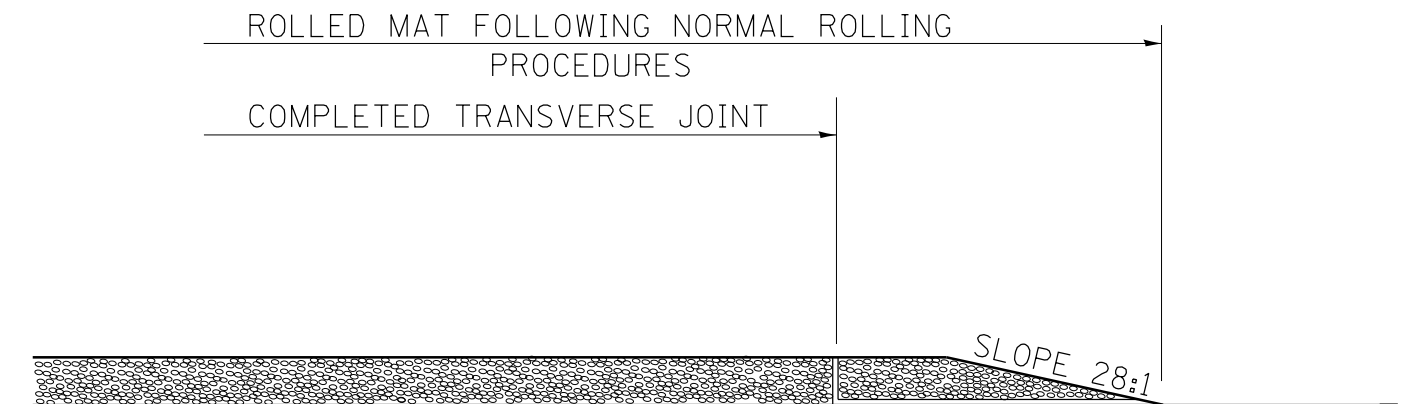
STEP III

1. JOINT PAPER OR OTHER PRESELECTED JOINT MATERIAL IS THEN PLACED IN THE CLEARED AREA AND THE EXCESS ASPHALT USED TO HAND FORM A TRANSITION TO THE DIMENSIONS SHOWN ABOVE.
2. NOTE THAT IN CONSTRUCTING THE TRANSITION, THE MAT DEPTH IS CONTINUED AS PART OF THE TRANSITION BEFORE FORMING THE FEATHER.



STEP II

1. MOVE THE PAVER OUT OF THE WAY AND REMOVE THE ASPHALT FROM THE AREA OF THE PROPOSED TEMPORARY HOT-MIX ASPHALT TRANSITION.
2. SQUARE UP THE END OF THE MAT WITH A RAKE OR LUTE.
3. NOTE THAT THE MAT WITHIN 4' OF THE END OF JOINT IS NOT TO BE ROLLED AT THIS TIME.



STEP IV

1. COMPLETE TEMPORARY TRANSITION BY ROLLING.
2. TO RESUME PAVING, AT THE JOINT, REMOVE TEMPORARY TRANSITION AND DISPOSE OF THE MATERIAL ACCORDING TO ART. 202.03 OF THE STD. SPECS. (COST INCLUDED IN THE CONTRACT).
3. CONSTRUCTING THE TEMPORARY TRANSITIONS WILL NOT BE PAID FOR SEPARATELY IN ACCORDANCE WITH ARTICLE 406.14 OF THE STANDARD SPECIFICATIONS.

REVISIONS

REDRAWN	2-15-89
REVISED	8-16-94
REVISED	01-09-07
RESIZED	05-8-08
REVISED	05-16-13

STD. 9-26

FILE NAME =	USER NAME = jacksonc	DESIGNED -	REVISED -
pw:\IL\084EBIDINTEG.illinois.gov\PIWIDOT\Documents\IDOT Offices\District 9\Projects\78570\DRAWING\CAD\Sheets\78570.dgn		CHECKED -	REVISED -
Default	PLOT SCALE = 100.0000' / in.	DATE -	REVISED -
	PLOT DATE = 3/23/2017		

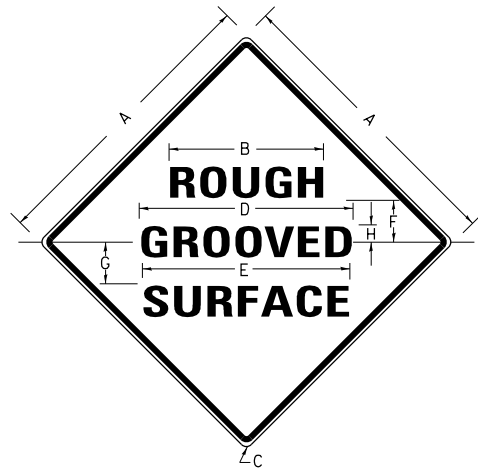
STATE OF ILLINOIS
DEPARTMENT OF TRANSPORTATION

DETAILS FOR HMA TRANSITION

SCALE: SHEET OF SHEETS STA. TO STA.

F.A.U. RTE.	SECTION	COUNTY	TOTAL SHEETS	SHEET NO.
9629	(1,1)XRS-2	WILLIAMSON	17	16
CONTRACT NO. 78570				
ILLINOIS FED. AID PROJECT				

ILLINOIS STANDARD



COLORS:

LEGEND AND BORDER- BLACK NON-REFLECTORIZED
BACKGROUND- ORANGE REFLECTORIZED

SIGN SIZE	DIMENSIONS							
	A	B	C	D	E	F	G	H
48X48	48.0	24.1	3.0	34.0	33.0	6.0	13.0	3.5

SIGN SIZE	SERIES LINES			MAR-GIN	BOR- DER	BLANK STD.
	1	2	3			
48X48	7C	7C	7C	0.8	1.2	B4-48D

ALL DIMENSIONS IN INCHES

NOTES:

PRIOR TO ALLOWING TRAFFIC ON ANY PORTION OF THE ROADWAY THAT HAS BEEN COLDMILLED, THE CONTRACTOR SHALL HAVE ERECTED "ROUGH GROOVED SURFACE" SIGNS THAT CONFORM TO THE ABOVE DETAILS. A MINIMUM OF ONE SIGN AT EACH END OF THE IMPROVEMENT WILL BE REQUIRED. THE CONTRACTOR SHALL MAINTAIN THE "ROUGH GROOVED SURFACE" SIGNS UNTIL THE COLDMILLED SURFACE IS COVERED WITH LEVELING BINDER OR SURFACE COURSE.

IF AT ANY TIME THE SIGNS ARE IN PLACE BUT NOT APPLICABLE, THEY SHALL BE TURNED FROM THE VIEW OF MOTORISTS OR COVERED AS DIRECTED BY THE ENGINEER.

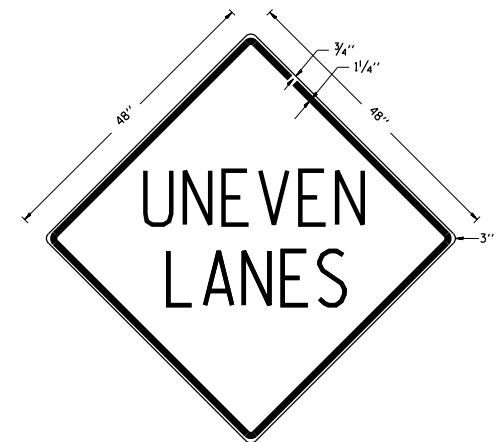
THE COST OF FURNISHING, ERECTING, MAINTAINING, AND REMOVING THE REQUIRED SIGNS SHALL BE INCLUDED IN THE CONTRACT.

STD. 9-39

REVISIONS	
REDRAWN	2-15-89
REVISED	4-6-93
REVISED	3-27-08
REVIEWED	5-17-13

UNEVEN LANES SIGN

W8-11 (48" x 48")



COLORS:

LEGEND AND BORDER - BLACK NON-REFLECTORIZED
BACKGROUND - ORANGE REFLECTORIZED

NOTE: PRIOR TO ALLOWING TRAFFIC ON ANY PORTION OF THE ROADWAY THAT HAS BEEN COLDMILLED OR BEFORE RESURFACING OPERATIONS BEGIN, THE CONTRACTOR SHALL HAVE ERECTED "UNEVEN PAVEMENT" SIGNS THAT CONFORM TO THE ABOVE DETAILS. A MINIMUM OF ONE SIGN AT EACH END OF THE IMPROVEMENT WILL BE REQUIRED. THE CONTRACTOR SHALL MAINTAIN THE "UNEVEN PAVEMENT" SIGNS UNTIL THE RESURFACING OPERATIONS ARE COMPLETED.

IF AT ANY TIME THE SIGNS ARE IN PLACE BUT NOT APPLICABLE, THEY SHALL BE TURNED FROM THE VIEW OF MOTORISTS OR COVERED AS DIRECTED BY THE ENGINEER.

THE COST OF FURNISHING, ERECTING, MAINTAINING, AND REMOVING THE REQUIRED SIGNS SHALL BE INCLUDED IN THE CONTRACT.

STD. 9-41

REVISIONS	
DRAWN	2-15-89
REVISED	4-06-93
REDESIGNED	7-23-04
RESIZED	5-08-08
REVIEWED	5-17-13

FILE NAME =	USER NAME = jacksonc	DESIGNED -	REVISED -
p:\11\084EBIDINTEG.illinois.gov\PIWIDOT\Documents\DOT Offices\District 9\Projects\78570\Drawings\CAD\Sheets\78570.dgn		DRAWN -	REVISED -
Default	PLOT SCALE = 100.0000' / 1in.	CHECKED -	REVISED -
	PLOT DATE = 3/23/2017	DATE -	REVISED -

**STATE OF ILLINOIS
DEPARTMENT OF TRANSPORTATION**

UNEVEN LANE SIGN DETAIL AND ROUGH GROOVED SURFACE SIGNS

SCALE: SHEET OF SHEETS STA. TO STA.

F.A.U. RTE.	SECTION	COUNTY	TOTAL SHEETS	SHEET NO.
9629	(1)XRS-2	WILLIAMSON	17	17
				CONTRACT NO. 78570
ILLINOIS FED. AID PROJECT				