

STATE OF ILLINOIS
DEPARTMENT OF TRANSPORTATION

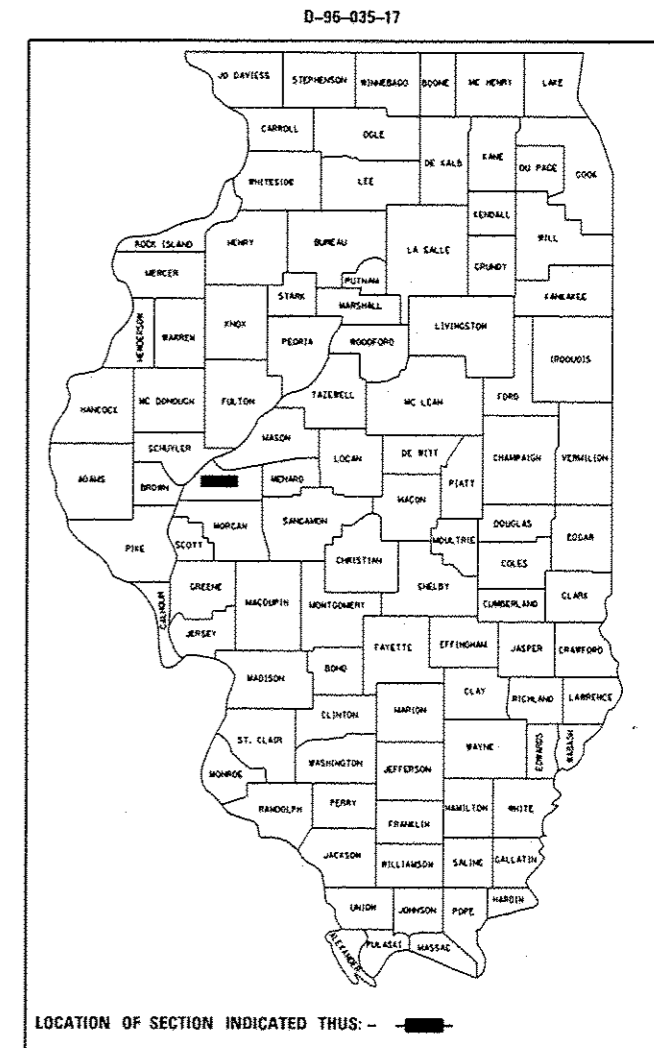
F.A.P. RTE.	SECTION	COUNTY	TOTAL SHEETS	SHEET NO.
67	1961 PP	CASS	4	1
		ILLINOIS	CONTRACT NO. 72J71	

FOR INDEX OF SHEETS, SEE SHEET NO. 2

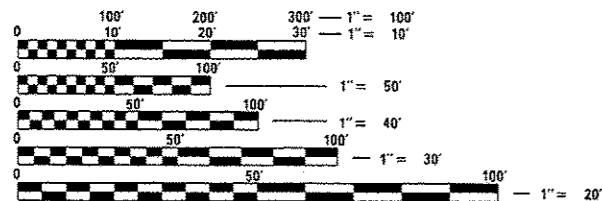
PROPOSED IMPROVEMENTS

FAP 67 (IL 125)
(96) PP
CLASS C PATCHING
STP-0067(086)
CASS CO.

C-96-035-17



ADT = 1700
SU = 225
MU = 150

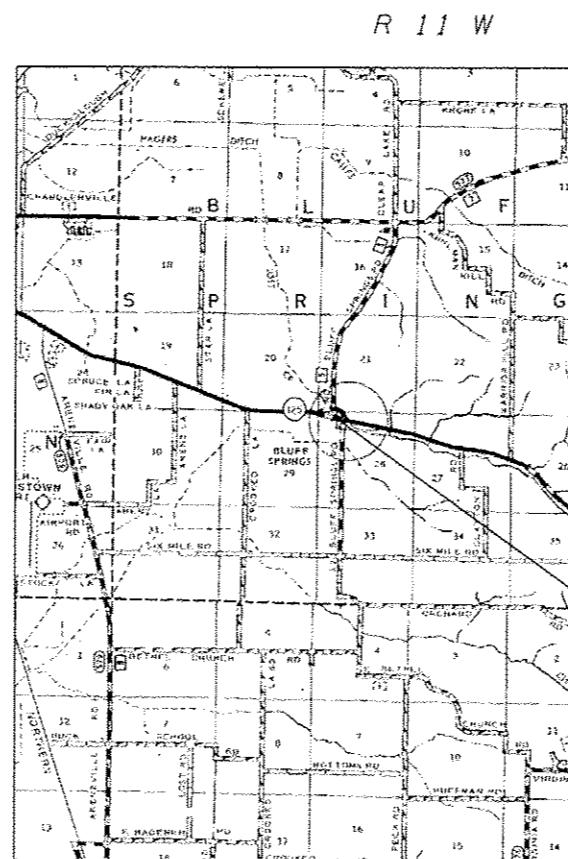


FULL SIZE PLANS HAVE BEEN PREPARED USING STANDARD ENGINEERING SCALES. REDUCED SIZED PLANS WILL NOT CONFORM TO STANDARD SCALES. IN MAKING MEASUREMENTS ON REDUCED PLANS, THE ABOVE SCALES MAY BE USED.

J.U.L.I.E.
JOINT UTILITY LOCATION INFORMATION FOR EXCAVATION
1-800-892-0123
OR 811

PROJECT ENGINEER : MIKE IRWIN - (217)524-7765
PROJECT MANAGER : TIM SHARP - (217)524-9160

CONTRACT NO. 72J71



PROJECT LOCATION
STA. 8+238.984

STATE OF ILLINOIS
DEPARTMENT OF TRANSPORTATION

SUBMITTED 28 March 2017
[Signature] REGION FOUR ENGINEER

May 12 2017
Marcus M. Addis ENGINEER OF DESIGN AND ENVIRONMENT

May 12 2017
[Signature] DIRECTOR OF HIGHWAYS, CHIEF ENGINEER

PRINTED BY THE AUTHORITY OF THE STATE OF ILLINOIS

INDEX OF SHEETS




SHEET NO.	DESCRIPTION
1.	COVER SHEET
2.	INDEX OF SHEETS, STANDARDS, GENERAL NOTES & SIGNATURE
3.	SUMMARY OF QUANTITIES
4.	PROJECT TYPICAL SECTIONS

STANDARDS

STANDARD NO.	DESCRIPTION
442201-03	CLASS C and D PATCHES
701201-04	LANE CLOSURE, 2L, 2W, DAY ONLY, FOR SPEEDS \geq 45 MPH
701301-04	LANE CLOSURE, 2L, 2W, SHORT TERM OPERATIONS
701306-03	LANE CLOSURE, 2L, 2W, SLOW MOVING OPERATIONS DAY ONLY, FOR SPEEDS \geq 45 MPH
701311-03	LANE CLOSURE, 2L, 2W, MOVING OPERATIONS, DAY ONLY
701901-06	TRAFFIC CONTROL DEVICES
780001-05	TYPICAL PAVEMENT MARKINGS

NOTES:

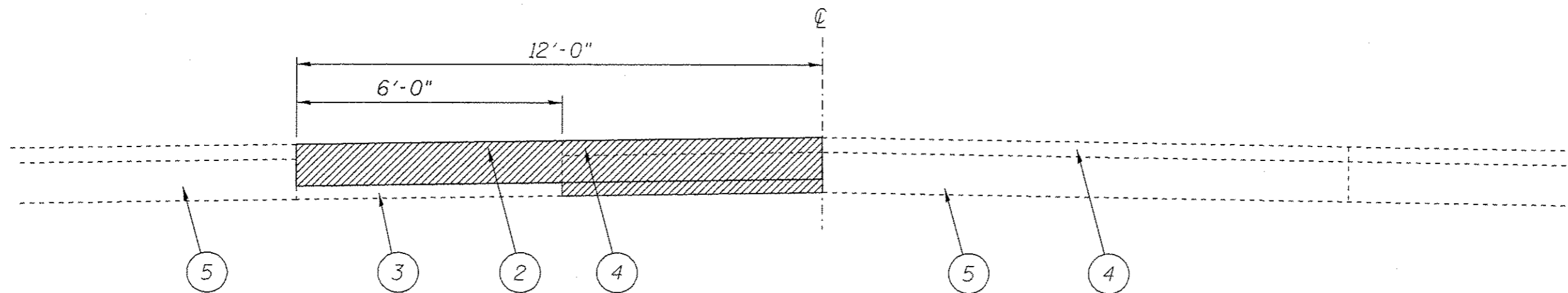
D-6 OPERATIONS WILL PLACE PERMANENT PAVEMENT MARKINGS

STATE OF ILLINOIS DEPARTMENT OF TRANSPORTATION DIVISION OF HIGHWAYS DISTRICT 6	
EXAMINED	<u>March 20th 20 17</u>  ENGINEER OF OPERATIONS
EXAMINED	<u>March 23 20 17</u>  ENGINEER OF PROJECT IMPLEMENTATION
EXAMINED	<u>March 24 20 17</u>  ENGINEER OF PROGRAM DEVELOPMENT

80% FEDERAL
20% STATE

				6-01140-0000
				CASS
				ROADWAY
				0004
				RURAL
CODE NO.	ITEM	UNIT	TOTAL QUANTITY	
44201347	CLASS C PATCHES, TYPE IV, 9 INCH	SQ YD	80	80
67100100	MOBILIZATION	L SUM	1	1
70100450	TRAFFIC CONTROL AND PROTECTION, STANDARD 701201	L SUM	1	1
70100460	TRAFFIC CONTROL AND PROTECTION, STANDARD 701306	L SUM	1	1

PATCHING SCHEDULE				CLASS C 9 INCH
				TY IV
STA.	LENGTH	WIDTH	AREA	
	(FT)	(FT)	(S.Y.)	(S.Y.)
LT. 8+238.984	60	12	80.0	80.0



TYPICAL SECTION
STA. 8+238.984 LT.

L E G E N D

- 1- EXIST PAVEMENT
- 2- EXIST. P.C.C. PAVEMENT 7"
- 3- EXIST. GRANULAR SUB-BASE
- 4- EXIST. H.M.A. SURFACE
- 5- EXIST P.C.C. PAVEMENT

FILE NAME *	USER NAME * ahoptd	DESIGNED -	REVISED -	STATE OF ILLINOIS DEPARTMENT OF TRANSPORTATION	TYPICALS		F.A.P. RTE.	SECTION	COUNTY	TOTAL SHEETS	SHEET NO.
S:\CONTRMAINT_CAD\72J71 - Cass Co. - Bluff Springs - Class C Patch\PLANS\72J71-SHT-4-QRAWN.dgn -	PLOT SCALE * 3.0000' / in.	CHECKED -	REVISED -				67	1961 PP	CASS	4	4
Default	PLOT DATE = 3/28/2017	DATE -	REVISED -		SCALE: SHEET OF SHEETS STA. TO STA.		CONTRACT NO. 72J71				
							ILLINOIS FED. AID PROJECT				