

STATE OF ILLINOIS
DEPARTMENT OF TRANSPORTATION

F.A.I. RTE. 57	SECTION *	COUNTY DOUGLAS	TOTAL SHEETS 4	SHEET NO. 1
		ILLINOIS	CONTRACT NO. 70C61	

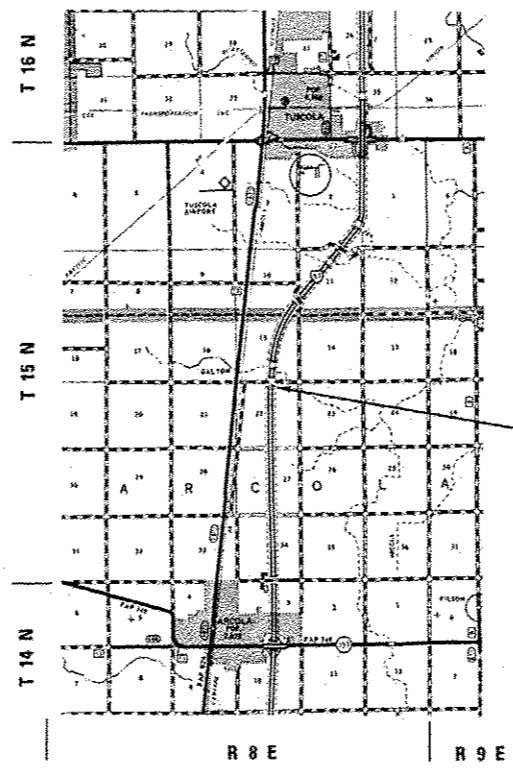
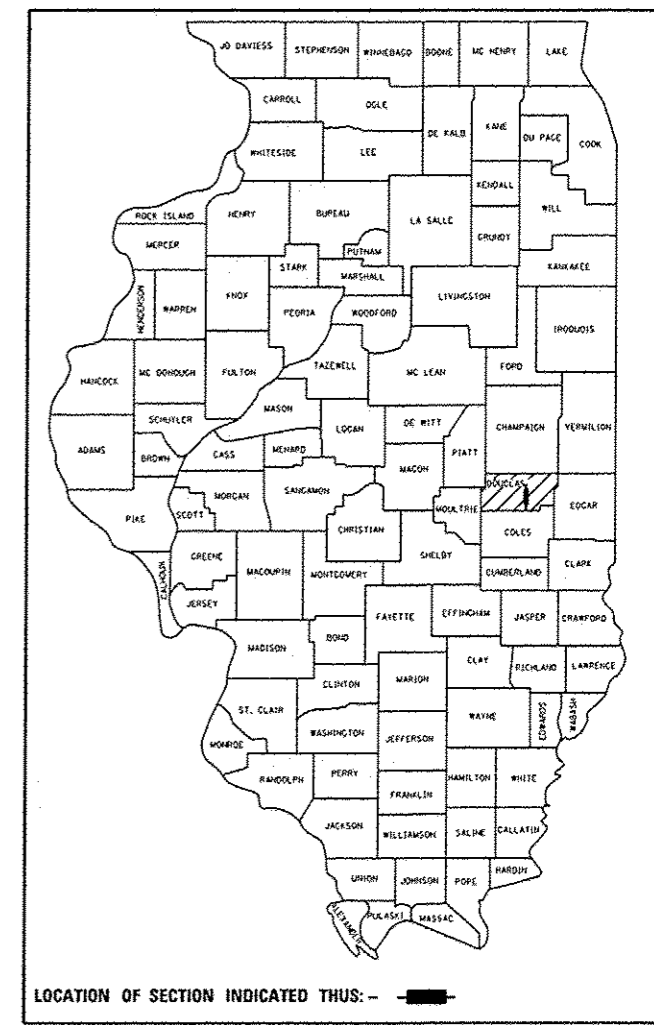
* POLLINATOR REHAB 2017-1

FOR INDEX OF SHEETS, SEE SHEET NO. 2

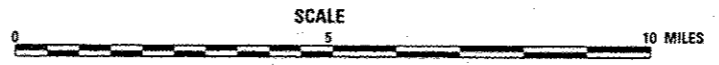
**PROPOSED
HIGHWAY PLANS**

F.A.I. 57 (I-57)
POLLINATOR REHAB 2017-1
DOUGLAS COUNTY

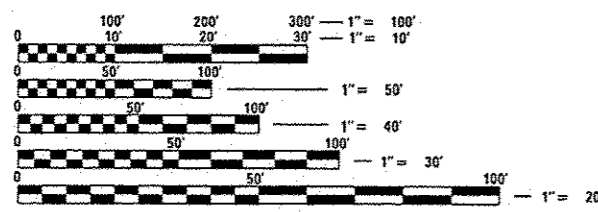
C-95-017-16



**PROJECT LOCATION
(NORTHBOUND ONLY)
STATION 324 + 45.00 TO
STATION 418 + 90.00**



GROSS LENGTH = 1.78 MILE
NET LENGTH = 1.78 MILE



FULL SIZE PLANS HAVE BEEN PREPARED USING STANDARD ENGINEERING SCALES. REDUCED SIZED PLANS WILL NOT CONFORM TO STANDARD SCALES. IN MAKING MEASUREMENTS ON REDUCED PLANS, THE ABOVE SCALES MAY BE USED.

J.U.L.I.E.
JOINT UTILITY LOCATION INFORMATION FOR EXCAVATION
1-800-892-0123
OR 811 ARCOLA TOWNSHIP

PROJECT ENGINEER: JASON W. STULTS
DESIGNER: GREG ROBINSON
PHONE NUMBER : (217)465-4181
CONTRACT NO. 70C61

STATE OF ILLINOIS
DEPARTMENT OF TRANSPORTATION

SUBMITTED MARCH 21 2017
Kenneth A. Gannatt
REGIONAL ENGINEER

MAY 12 2017
Mousoon M. Adib, P.E.
ENGINEER OF DESIGN AND ENVIRONMENT

MAY 12 2017
David J. [Signature]
DIRECTOR OF PROGRAM DEVELOPMENT

**PRINTED BY THE AUTHORITY
OF THE STATE OF ILLINOIS**

INDEX OF SHEETS

- 1 COVER SHEET
- 2 INDEX OF SHEETS
- 2 HIGHWAY STANDARDS
- 2 GENERAL NOTES
- 3 SUMMARY OF QUANTITIES
- 4 SCHEDULE OF QUANTITIES

GENERAL NOTES

G.N.-100
 ENGLISH UNITS OF MEASUREMENT SHALL GOVERN OVER AND SUPERSEDE ANY METRIC UNITS SHOWN IN THIS CONTRACT. WHERE INCLUDED, METRIC UNITS ARE FOR INFORMATION ONLY.

G.N.-100A
 ELECTRONIC FILES AND/OR ELECTRONIC SURVEY INFORMATION INCLUDING CADD FILES WILL NOT BE AVAILABLE TO THE CONTRACTOR.

G.N.-202
 GRADING SHALL BE DONE BY HAND AROUND LIGHT POLES, UTILITY POLES, SIGN POSTS, SHRUBS, TREES OR OTHER NATURAL OR MAN-MADE OBJECTS WHERE SHALLOW FILLS OR CUTS ARE ADJACENT TO THE ITEMS. IT IS THE INTENT THAT THE LIMITS OF CONSTRUCTION BE SUCH AS TO PRESERVE IN THE ORIGINAL STATE AS MUCH AREA OF TEMPORARY EASEMENTS AS POSSIBLE. THE DECISION AS TO ITEMS TO REMAIN IN PLACE SHALL BE AS DIRECTED BY THE ENGINEER.

THIS WORK WILL NOT BE PAID FOR SEPARATELY, BUT SHALL BE CONSIDERED INCLUDED IN THE CONTRACT UNIT PRICE PER ACRE FOR SELECTIVE CLEARING AND NO ADDITIONAL COMPENSATION WILL BE ALLOWED

G.N.-250C
 SEEDING, CLASS 7 AND MULCH, METHOD 2 IS INCLUDED IN THIS CONTRACT TO SEED DISTURBED EARTH EMBANKMENT DURING TIME PERIODS WHEN PERMANENT SEEDING IS NOT ALLOWED. SOME OR ALL OF THE CLASS 7 SEEDING AND MULCH WILL BE DELETED IF IT IS POSSIBLE TO PLACE PERMANENT SEEDING ON EARTH SHOULDERS AT THE TIME OF THEIR COMPLETION.

COMMITMENTS
 THERE ARE NO COMMITMENTS ON THIS CONTRACT

LIST OF HIGHWAY STANDARDS

- 000001-06 STANDARD SYMBOLS, ABBREVIATIONS, AND PATTERNS
- 001006 DECIMAL OF AN INCH AND OF A FOOT
- 280001-07 TEMPORARY EROSION CONTROL SYSTEMS
- 665001-02 WOVEN WIRE FENCE
- 701101-05 OFF-RD OPERATIONS, MULTILANE, 15' (4.5m) TO 24" (600mm) FROM PAVEMENT EDGE
- 701106-02 OFF-RD OPERATIONS, MULTILANE, MORE THAN 15' (4.5m) AWAY
- 701901-06 TRAFFIC CONTROL DEVICES

010100

SUMMARY OF QUANTITIES

LOCATION OF WORK:

FAI 57

RURAL INTERSTATE ✓

DOUGLAS COUNTY

100% STATE ✓

CONSTR

0031 ✓

CODE NO.	ITEM	UNIT	TOTAL QUANTITY
20100110	TREE REMOVAL (6-15 UNITS DIAMETER)	UNITS	222.0
25003326	INTERSEEDING CLASS 5C	ACRE	1.25
25000350	SEEDING CLASS 7	ACRE	1.25
25100115	MULCH METHOD 2	ACRE	1.25
66500105	WOVEN WIRE FENCE, 4'	FOOT	1300.0
67100100	MOBILIZATION	L SUM	1.0
Z0022800	FENCE REMOVAL	FOOT	1300.0
Z0064600	SELECTIVE CLEARING	ACRE	1.25

SCHEDULE OF QUANTITIES

**Pollinator Rehab Contract Quantities
I-57 NB, Douglas County**

Station	to	Station	*WxL (ft)	AREA (sq ft)	Z0064600 Selective Clearing AREA (acre)	Trees (ea)	Size (dia in.)	Z0100110 Tree Removal 6-15 In (dia in.)	Z0022800 Fence Removal (ft)	66500105 Woven Wire Fence (ft)	Z5003326 Interseeding Class 5C (acre)	Z5000350 Seeding Class 7 (acre)	Z5100115 Mulch Method 2 (acre)
324+45	to	325+15	20x70	1400	0.032	7	7	49	100	100	0.032	0.032	0.032
325+75	to	331+30	20x560	11200	0.257	11	8	88	400	400	0.257	0.257	0.257
344+40	to	346+00	20x160	3200	0.073	1	9	9	160	160	0.073	0.073	0.073
346+00	to	346+80	20x80	800	0.018			0	60	60	0.018	0.018	0.018
350+00	to	352+40	20x240	4800	0.110	1	6	6	50	50	0.110	0.110	0.110
350+75	to	350+95	20x20	400	0.009			0			0.009	0.009	0.009
353+00	to	353+20	20x20	400	0.009			0			0.009	0.009	0.009
353+70	to	354+10	20x40	800	0.018			0			0.018	0.018	0.018
354+30	to	354+50	20x20	400	0.009			0			0.009	0.009	0.009
355+30	to	355+40	20x10	200	0.005			0			0.005	0.005	0.005
357+10	to	357+60	20x50	1000	0.023			0			0.023	0.023	0.023
358+00	to	358+50	20x50	1000	0.023			0			0.023	0.023	0.023
359+10	to	359+30	20x20	400	0.009			0			0.009	0.009	0.009
360+90	to	362+50	20x160	3200	0.073	2	6	12	50	50	0.073	0.073	0.073
364+10	to	364+25	20x15	300	0.007			0			0.007	0.007	0.007
377+50	to	377+70	20x20	400	0.009			0			0.009	0.009	0.009
378+20	to	378+30	20x10	200	0.005			0			0.005	0.005	0.005
378+80	to	379+00	20x20	400	0.009			0			0.009	0.009	0.009
379+30	to	379+40	10x10	100	0.002	1	10	10			0.002	0.002	0.002
380+50	to	381+30	30x80	2400	0.055			0	150	150	0.055	0.055	0.055
381+50	to	382+30	30x80	2400	0.055	3	8	24	150	150	0.055	0.055	0.055
383+50	to	393+50	20x500	1000	0.023	1	6	6	50	50	0.023	0.023	0.023
393+75	to	394+15	20x40	800	0.018			0			0.018	0.018	0.018
403+50	to	403+70	20x20	400	0.009			0			0.009	0.009	0.009
405+10	to	405+30	20x20	400	0.009			0			0.009	0.009	0.009
406+80	to	407+50	20x70	1400	0.032	1	8	8	50	50	0.032	0.032	0.032
408+00	to	408+20	20x20	400	0.009			0			0.009	0.009	0.009
409+50	to	409+60	10x10	100	0.002			0			0.002	0.002	0.002
410+10	to	416+10	20x600	1200	0.028	1	10	10	80	80	0.028	0.028	0.028
416+30	to	418+90	20x260	5200	0.119			0			0.119	0.119	0.119
TOTAL:				46300.0	1.1			222.0	1300.0	1300.0	1.1	1.1	1.1
TOTAL USE:				46300.00	1.25			222.00	1300.00	1300.00	1.25	1.25	1.25

* width measured from boundary fence toward interstate