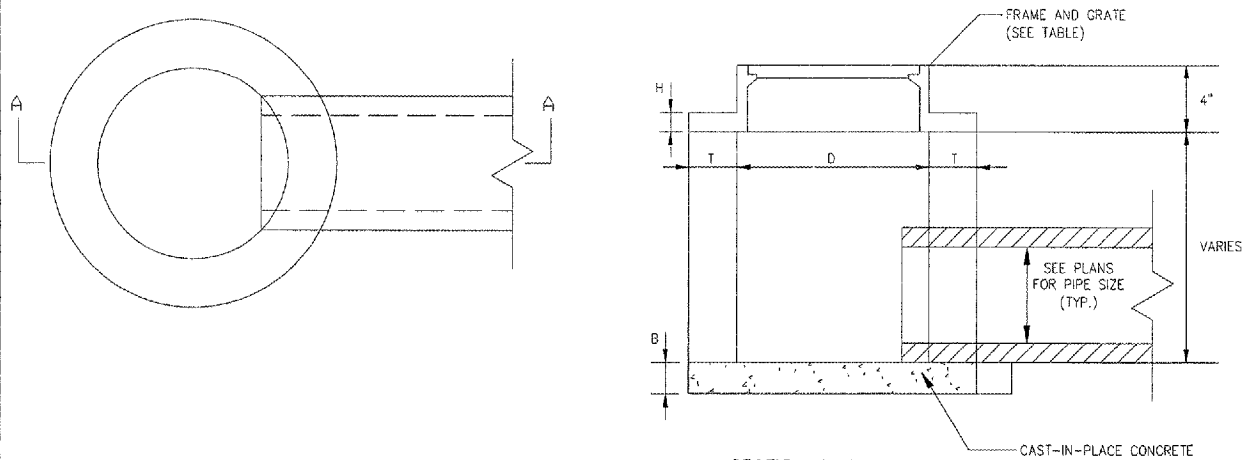
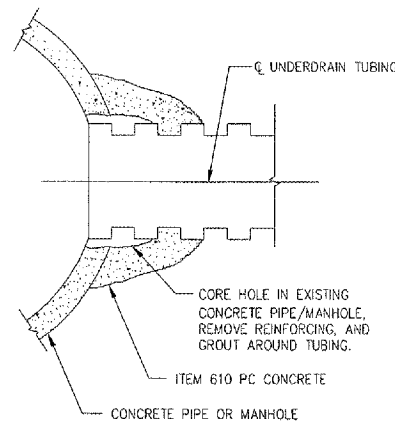


06/12/2006 08:35 AM  
N04Jobs\083183104TXYD Taxilanes Re-design (June 2006)\Sheet21 Drainage Details 01.dgn  
LDH

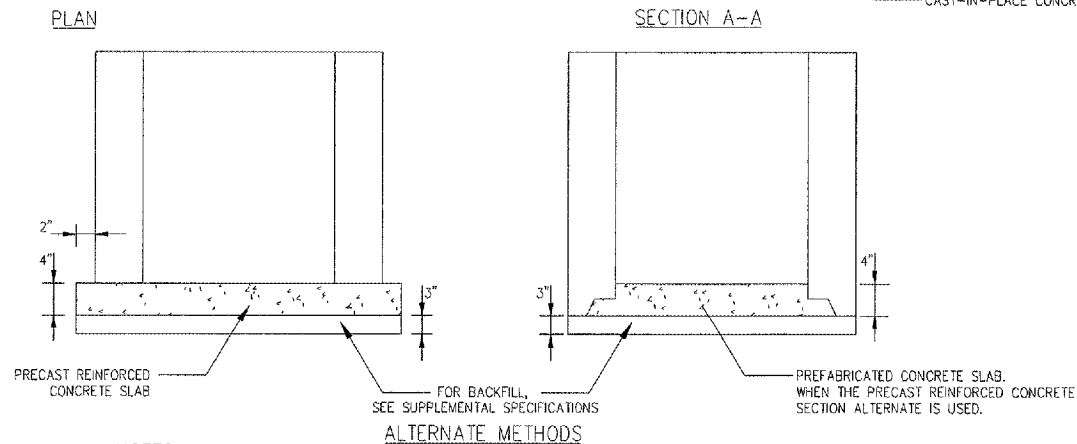


#### NOTES

1. FOR STRUCTURE LOCATIONS SEE STORM SEWER SCHEDULE.
2. FRAME AND GRATE, ADJUSTING RINGS OR RISER SHALL BE MORTARED.
3. ALL MANHOLE AND INLET STRUCTURES TO BE PRECAST.



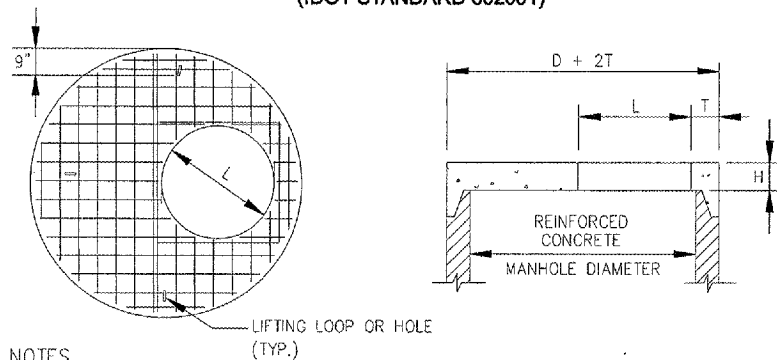
### STORM SEWER CONCRETE COLLAR AND GROUT CONNECTION



#### NOTES

1. SEE DRAINAGE AND UNDERDRAIN SCHEDULE FOR LOCATION, SIZE AND NUMBER OF PIPE CONNECTIONS.
2. INLETS TO BE PRECAST REINFORCED CONCRETE SECTIONS (T = 3").

### INLET TYPE A (IDOT STANDARD 602301)



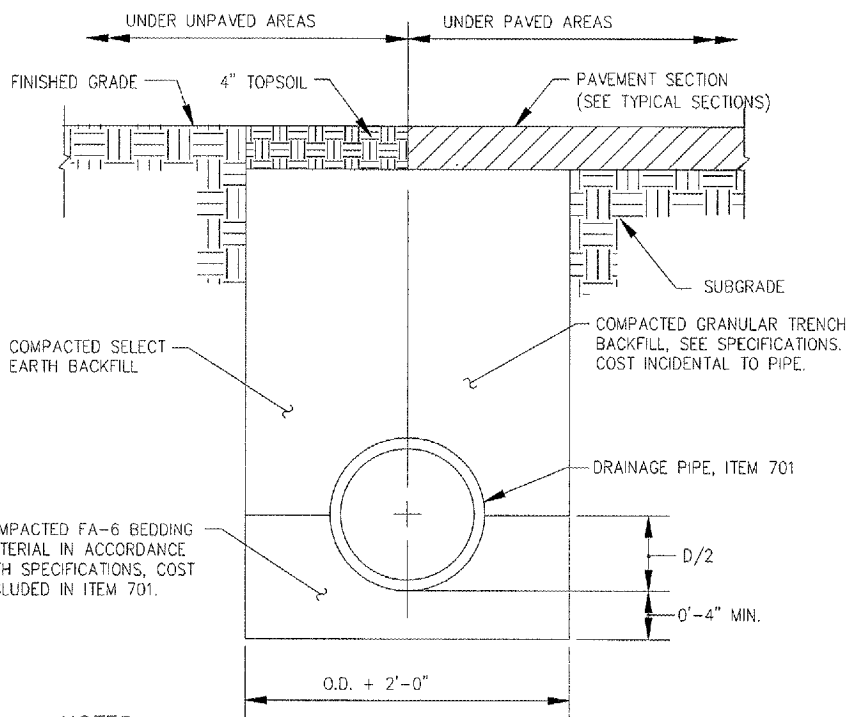
#### NOTES

1. ADDITIONAL TOP AND BOTTOM BARS PLACED ADJACENT TO ACCESS HOLE.
2. MINIMUM 1" COVER ON STEEL BARS.
3. THREE LIFTING LOOPS OR HOLES.
4. MINIMUM STEEL REINFORCEMENT IN EACH DIRECTION TO BE WWF 1.06 SQ. IN./FT. IN ACCORDANCE WITH AASHTO M199 AND IDOT STANDARDS.
5. FOR "L" DIMENSION SEE STORM SEWER SCHEDULES.

### PRECAST REINFORCED CONCRETE FLAT SLAB TOP (IDOT STANDARD 602601)

#### STRUCTURE DATA

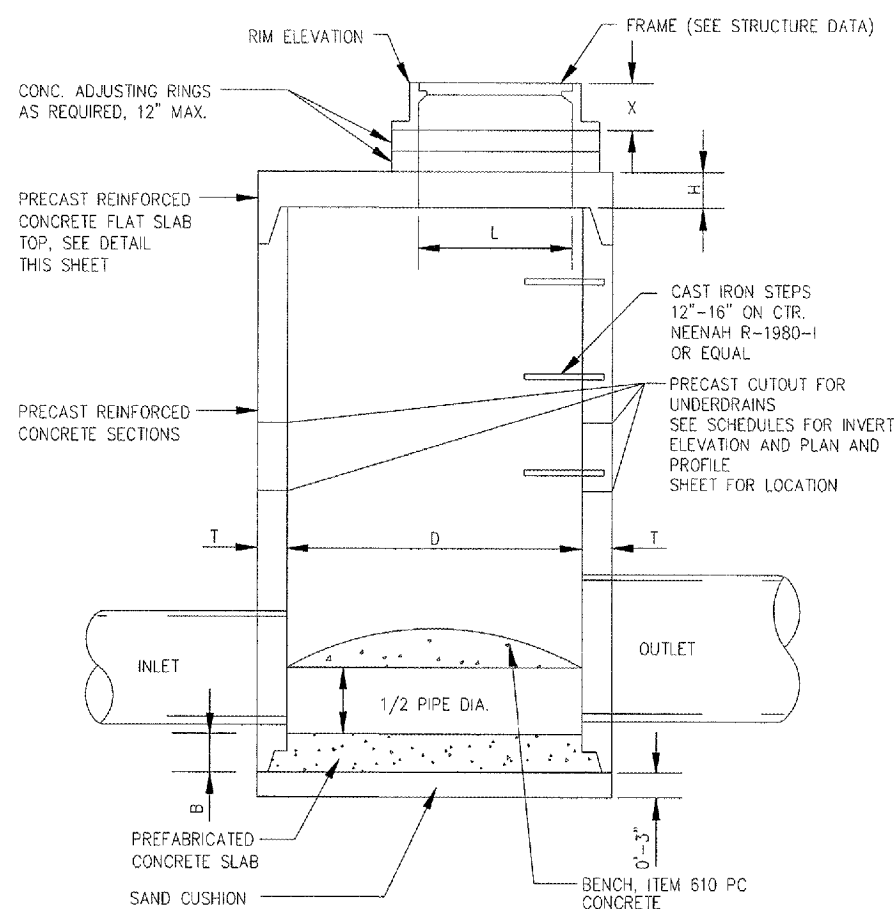
STRUCTURE NUMBER	STRUCTURE TYPE	INSIDE DIA. "D" (IN.)	WALL THICKNESS "T" (IN.)	TOP THICKNESS "H" (IN.)	BOTTOM THICKNESS "B" (IN.)	FRAME HEIGHT "X" (IN.)	HOLE OPENING "L" (IN.)	FRAME TYPE (EAST JORDAN)	COVER/GRATE (EAST JORDAN)
INL 10	INLET	24	3	---	4	6	24	1020	TYPE M1
INL 11	INLET	24	3	---	4	6	24	1020	TYPE M1
MH 12	MANHOLE	48	5	6	6	6	24	1020	TYPE M1
FES 10	F.E.S.	12	---	---	---	---	---	---	SEE DETAIL



#### NOTES

1. UNSUITABLE MATERIAL ENCOUNTERED DURING PLACEMENT OF BEDDING SHALL BE REMOVED AND REPLACED.
2. WITHIN 3 FEET OF PAVED AREA, GRANULAR BACKFILL IS TO BE USED INSTEAD OF EARTH BACKFILL.
3. AT CONTRACTOR'S OPTION IDOT CONTROLLED LOW STRENGTH MATERIAL WITH A HIGH EARLY STRENGTH, "FLASH FILL", MAY BE USED INSTEAD OF GRANULAR TRENCH BACKFILL UNDER PAVEMENTS.

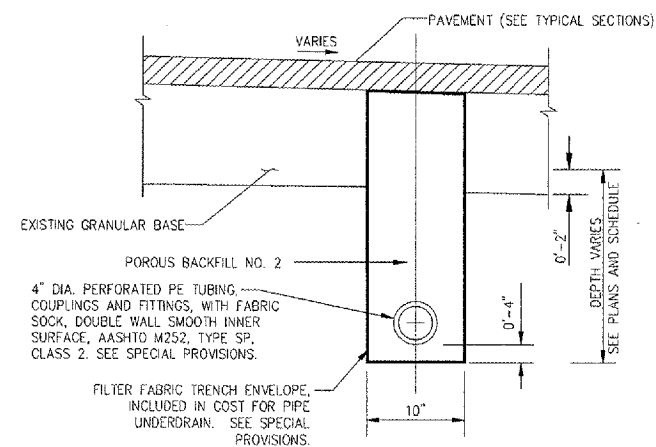
### PIPE TRENCH



#### NOTES

1. FOR FRAME AND LID INFORMATION SEE STRUCTURE DATA.
2. CENTER OF FRAME TO BE USED FOR LOCATING STRUCTURE. FOR STRUCTURE LOCATIONS AND ADDITIONAL INFORMATION SEE SCHEDULE.
3. ALL STRUCTURES TO BE PRECAST REINFORCED CONCRETE SECTIONS; BENCHES MAY BE CAST IN PLACE.

### MANHOLE WITH FLAT SLAB TOP (IDOT STANDARD 602406-MODIFIED)



### UNDERDRAIN UNDER PAVEMENT

DETAILS SHOWN ARE NOT TO SCALE

WA056



HANSON PROFESSIONAL SERVICES INC.

815 Commerce Drive, Suite 200  
Oak Brook, Illinois 60523  
Telephone: 630.990.3800  
Fax: 630.990.3801



Waukegan Regional Airport  
Waukegan Regional Port District

3580 North McAree Road  
Waukegan, Illinois 60087  
Phone: 847.244.0055  
Fax: 847.244.3813

WAUKEGAN REGIONAL AIRPORT

REHABILITATE HANGAR  
TAXILANES AND SERVICE  
ROAD

IDA PROJECT NO. UGN-3601

No.	Drawing Issue Description	Date	By

Date  
Sheet Title  
APRIL 21, 2006

DRAINAGE DETAILS

831-04TXYD

Project Number

SJM 11/15/05

Layout By Date

RPH 11/15/05

Designed By Date

RMH/RPH 04/04/06

Reviewed By Date

SJM

Drawn By

Sheet No.