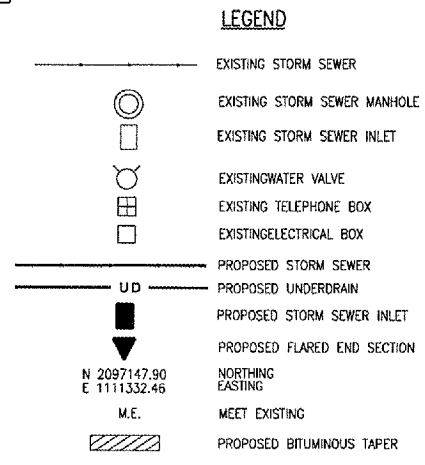
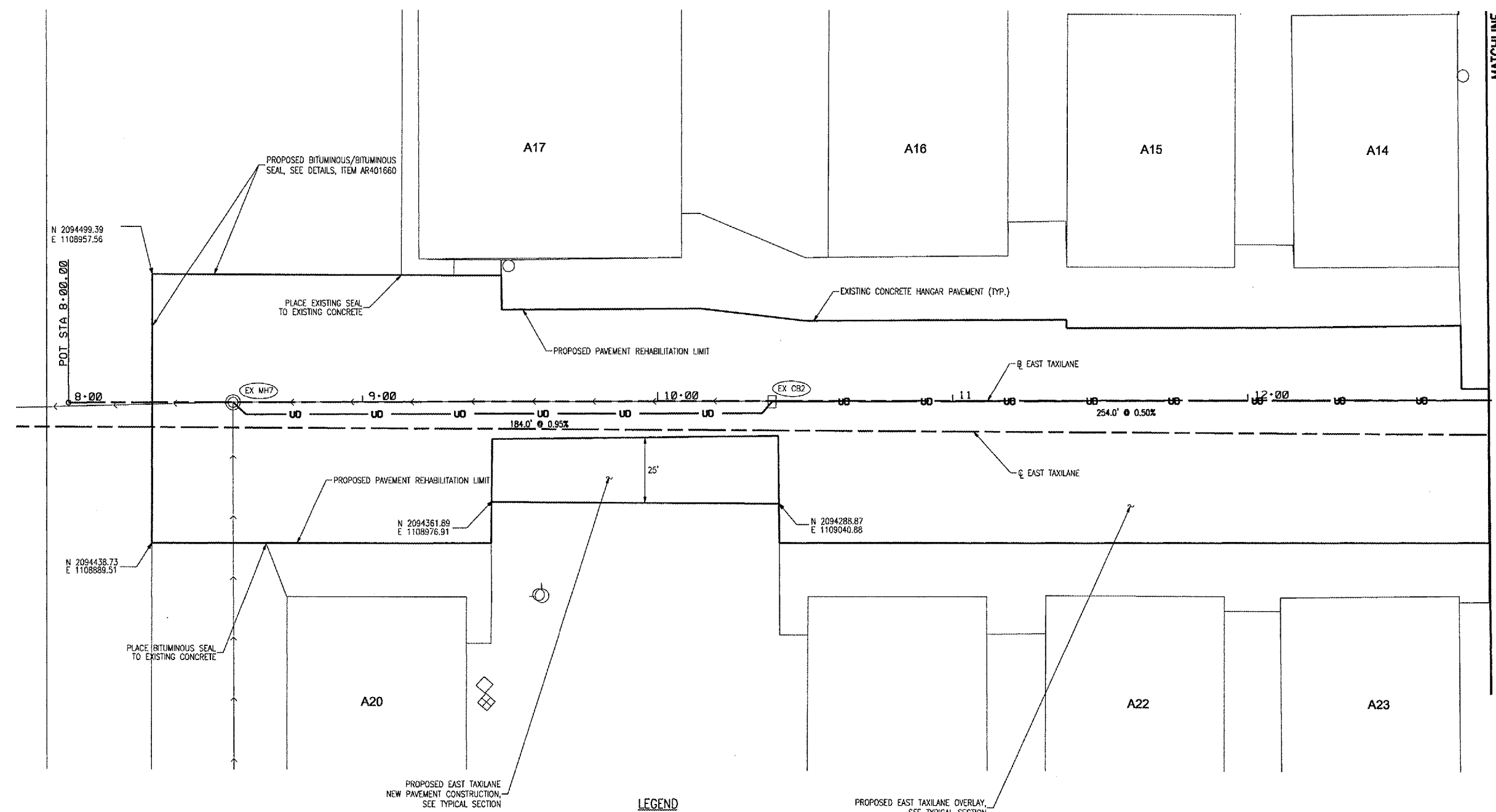
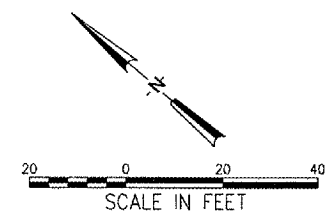


05/01/2006, 08:32 AM LDH  
I:\04\Jobs\0083103104TXYP Taxilanes Re-design (June 2005)\Civil\Sheet16 Plan Hangar 02.dgn



- NOTES**
- FOR ADDITIONAL STORM SEWER AND UNDERDRAIN INFORMATION, SEE SCHEDULES.
  - CONTRACTOR IS REQUIRED TO FIELD VERIFY EXISTING UTILITY LOCATIONS.
  - ALIGNMENT AND COORDINATES IS BASED ON STATE PLANE COORDINATES.
  - THE CONTRACTOR SHALL PLACE PROPOSED TAXILANE PAVEMENT MARKINGS AFTER BITUMINOUS PAVEMENT SURFACING. THE PAVEMENT MARKING SHALL BE 1' CONTINUOUS YELLOW PLACED ALONG THE CENTERLINE OF THE TAXILANE BEGINNING AT THE NEW PAVED SURFACE TO THE END OF THE WEST EDGE OF THE TAXILANE. RESIDENT ENGINEER TO APPROVE MARKING LIMITS BEFORE CONTRACTOR PROCEEDS. PAVEMENT MARKINGS SHALL BE PAID FOR UNDER ITEM AR620520.
  - SEE PLAN - WEST TAXILANE FOR ALIGNMENT DATA.



WA056



HANSON PROFESSIONAL SERVICES INC.  
815 Commerce Drive, Suite 200  
Oak Brook, Illinois 60523  
Telephone: 630.990.3800  
Fax: 630.990.3801

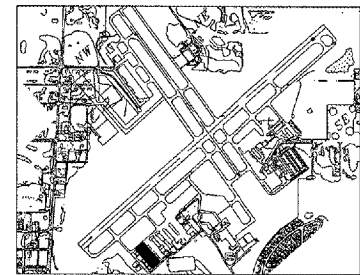


Waukegan Regional Airport  
Waukegan Regional Port District  
3580 North McAree Road  
Waukegan, Illinois 60087  
Phone: 847.244.0055  
Fax: 847.244.3813

**WAUKEGAN REGIONAL AIRPORT**

**REHABILITATE HANGAR TAXILANES AND SERVICE ROAD**

IDA PROJECT NO. UGN-3601



KEY MAP

No.	Drawing Issue Description	Date	By

Date  
APRIL 21, 2006

Sheet Title

**PLAN - EAST TAXILANE**

831-04TXYP  
Project Number  
RPH 11/15/05  
Layout By Date  
RPH 11/15/05  
Designed By Date  
RPH/ARMH 04/04/06  
Reviewed By Date  
— SJM —  
Drawn By