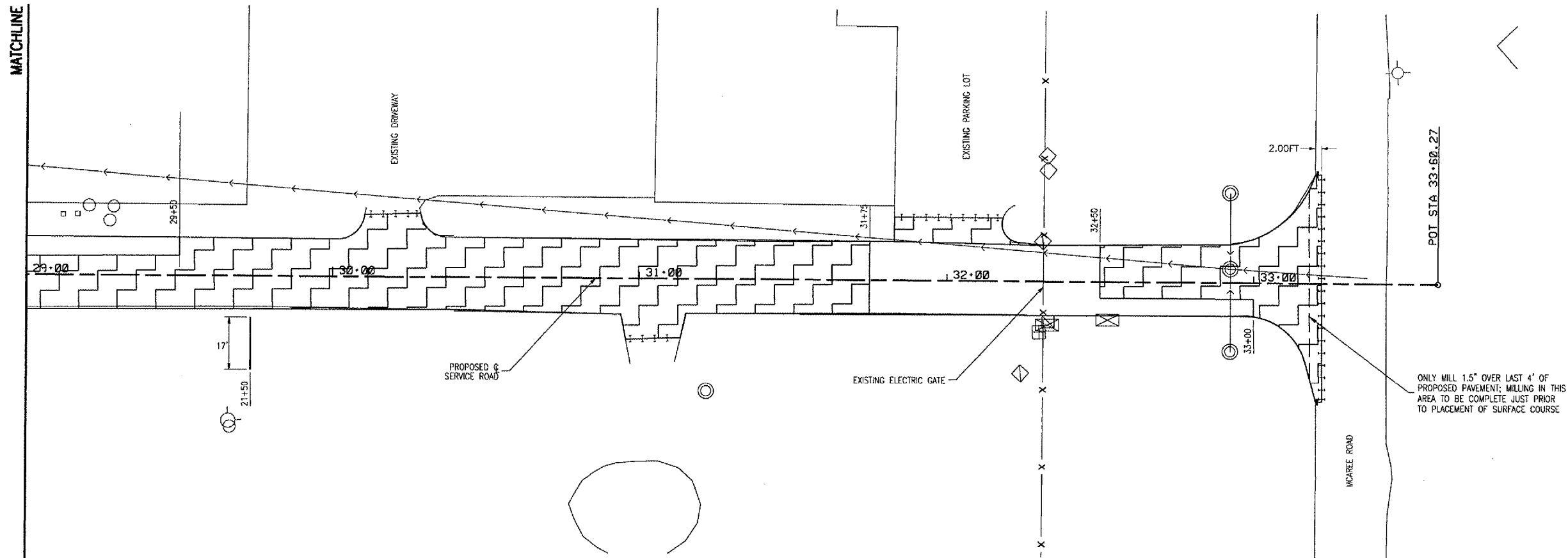


05/01/2006, 08:30 AM
I:\04\0505\0505105104TXYP Taxilanes Re-design (June 2005)\Civil\Sheet\14 Removal SW Access Rd P.03.dgn LDH

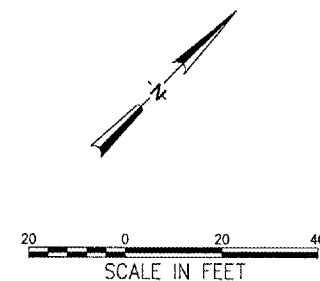


NOTES

1. EXISTING BITUMINOUS PAVEMENT, UNDERCUT, UNDERDRAINS, AND STORM SEWER RELATED ITEMS TO BE REMOVED ARE TO BE DISPOSED OF AT AN OFFSITE LOCATION. SEE SPECIAL PROVISION.
2. SEE PLAN SHEETS FOR COORDINATES OF PROPOSED SAWCUT LOCATIONS.
3. BITUMINOUS PAVEMENT MILLING TO BE COMPLETED AS NECESSARY ALONG SERVICE ROAD TO THE BOTTOM OF THE PROPOSED BASE COURSE ELEVATION. CONTRACTOR TO FIELD VERIFY REQUIRED MILLING AREAS.

LEGEND

- EXISTING STORM SEWER
- EXISTING STORM SEWER MANHOLE
- EXISTING STORM SEWER INLET
- EXISTING WATER VALVE
- EXISTING TELEPHONE BOX
- EXISTING ELECTRICAL BOX
- PROPOSED SAWCUT, ITEM 401665
- BITUMINOUS PAVEMENT REMOVAL, ITEM AR401900
- BITUMINOUS PAVEMENT MILLING, ITEM AR401650
- BITUMINOUS PAVEMENT REMOVAL, ITEM 401900
AGGREGATE BASE COURSE REMOVAL, QUANTITY INCLUDED IN ITEM AR152410



WA056



HANSON PROFESSIONAL SERVICES INC.

815 Commerce Drive, Suite 200
Oak Brook, Illinois 60523
Telephone: 630.990.3800
Fax: 630.990.3801



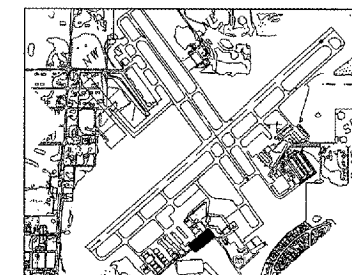
Waukegan Regional Airport
Waukegan Regional Port District

3580 North McAree Road
Waukegan, Illinois 60087
Phone: 847.244.0055
Fax: 847.244.3813

WAUKEGAN REGIONAL AIRPORT

REHABILITATE HANGAR
TAXILANES AND SERVICE
ROAD

IDA PROJECT NO. UGN-3801



KEY MAP

No.	Drawing Issue Description	Date	By

Date
APRIL 21, 2006
Sheet Title

SAWCUTTING AND
PAVEMENT REMOVAL
STA 29+00 TO STA 32+22.17

831-04TXVD	Project Number
RPH	11/16/06
Layout By	Date
RPH	11/15/05
Designed By	Date
RPH/RMH	04/04/06
Reviewed By	Date
SJM	DSY
Drawn By	Sheet No.