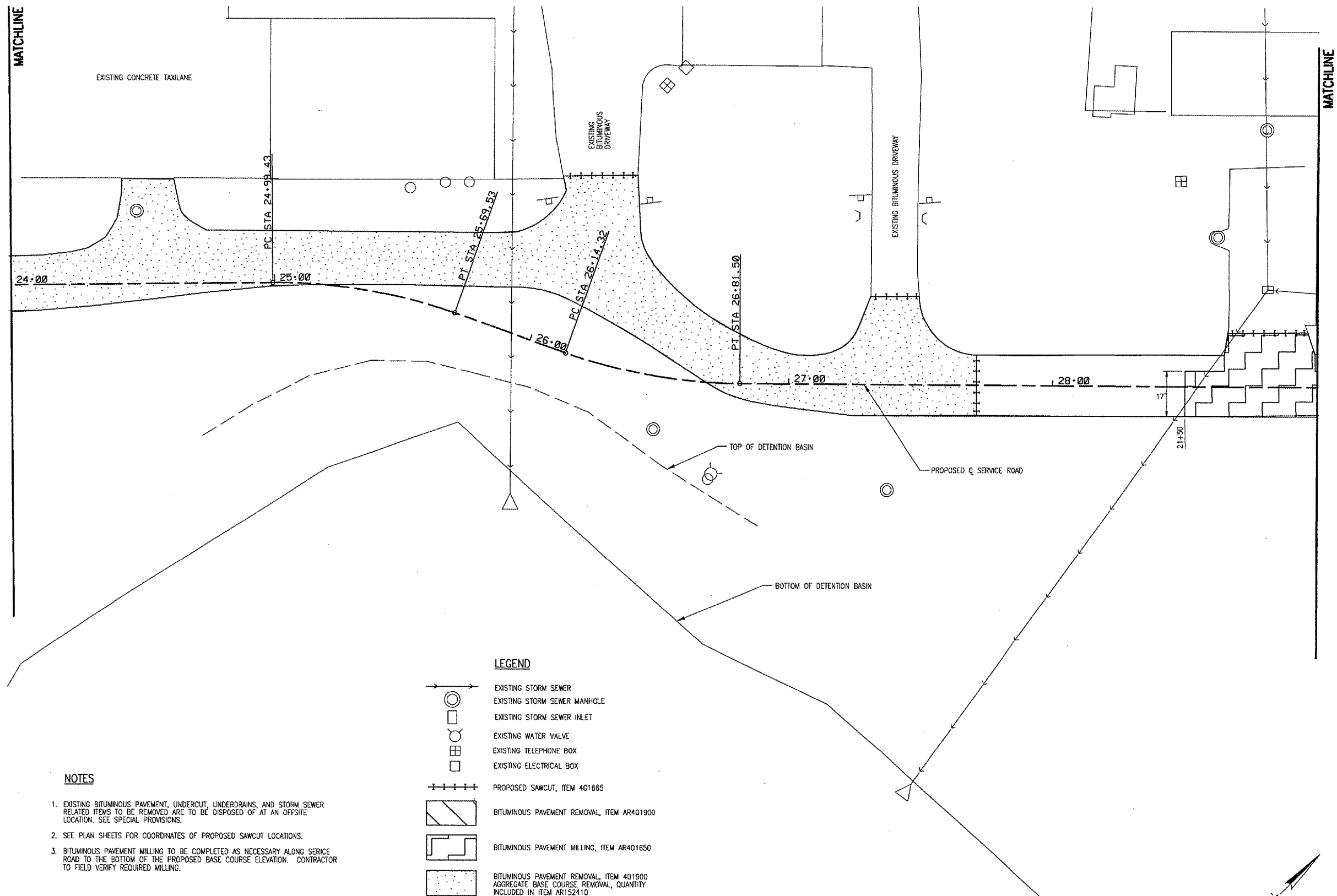


09/01/2006, 08:30 AM  
I:\04\Jobs\000316\01\04TXYP Taxilanes Re-design (June 2005)\Civil\Sheet13 Removal SW Access Rd P 02.dgn  
LDH

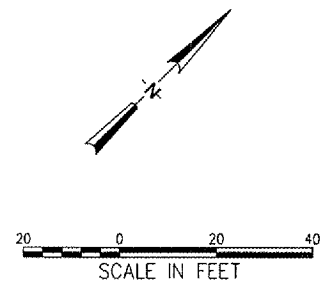


#### NOTES

1. EXISTING BITUMINOUS PAVEMENT, UNDERCUT, UNDERDRAINS, AND STORM SEWER RELATED ITEMS TO BE REMOVED ARE TO BE DISPOSED OF AT AN OFFSITE LOCATION. SEE SPECIAL PROVISIONS.
2. SEE PLAN SHEETS FOR COORDINATES OF PROPOSED SAWCUT LOCATIONS.
3. BITUMINOUS PAVEMENT MILLING TO BE COMPLETED AS NECESSARY ALONG SERVICE ROAD TO THE BOTTOM OF THE PROPOSED BASE COURSE ELEVATION. CONTRACTOR TO FIELD VERIFY REQUIRED MILLING.

#### LEGEND

	EXISTING STORM SEWER
	EXISTING STORM SEWER MANHOLE
	EXISTING STORM SEWER INLET
	EXISTING WATER VALVE
	EXISTING TELEPHONE BOX
	EXISTING ELECTRICAL BOX
	PROPOSED SAWCUT, ITEM 401865
	BITUMINOUS PAVEMENT REMOVAL, ITEM AR401900
	BITUMINOUS PAVEMENT MILLING, ITEM AR401650
	BITUMINOUS PAVEMENT REMOVAL, ITEM 401900 AGGREGATE BASE COURSE REMOVAL, QUANTITY INCLUDED IN ITEM AR152410



WA056



HANSON PROFESSIONAL SERVICES INC.

815 Commerce Drive, Suite 200  
Oak Brook, Illinois 60523  
Telephone: 630.990.3800  
Fax: 630.990.3801



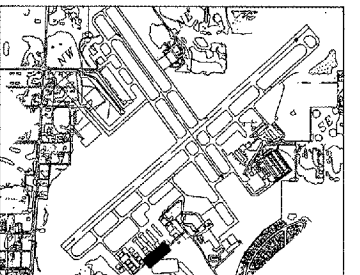
Waukegan Regional Airport  
Waukegan Regional Port District

3580 North McAre Road  
Waukegan, Illinois 60087  
Phone: 847.244.0055  
Fax: 847.244.3813

#### WAUKEGAN REGIONAL AIRPORT

#### REHABILITATE HANGAR TAXILANES AND SERVICE ROAD

IDA PROJECT NO. UGN-3601



KEY MAP

No.	Drawing Issue Description	Date	By

Date  
APRIL 21, 2006  
Sheet Title

#### SAWCUTTING AND PAVEMENT REMOVAL STA 24+00 TO STA 29+00

831-04TXYP	Project Number
RPH	11/15/05
Layout By	Date
RPH	11/15/05
Designed By	Date
RMH/RPH	04/04/06
Reviewed By	Date
SJM	DSY
Drawn By	Sheet No.