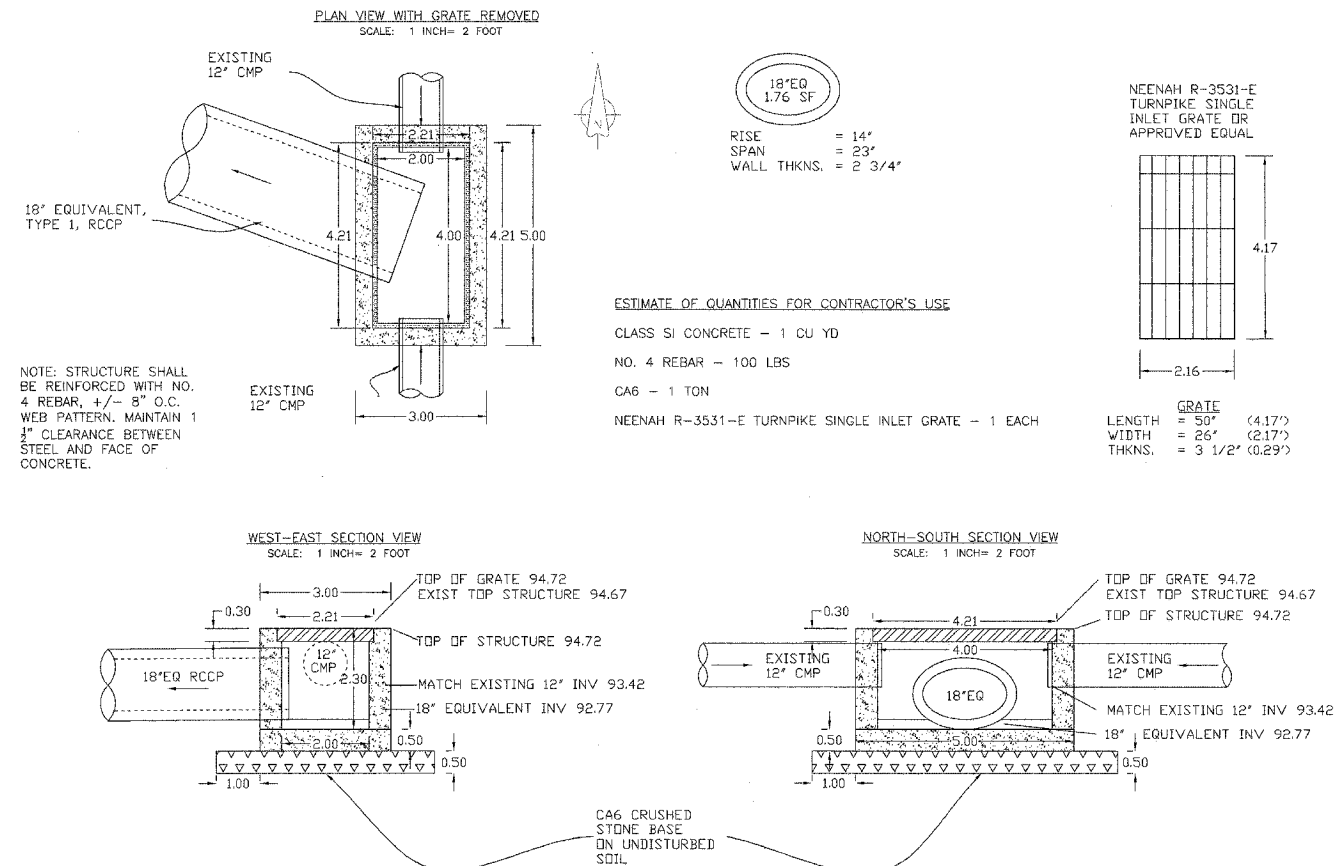
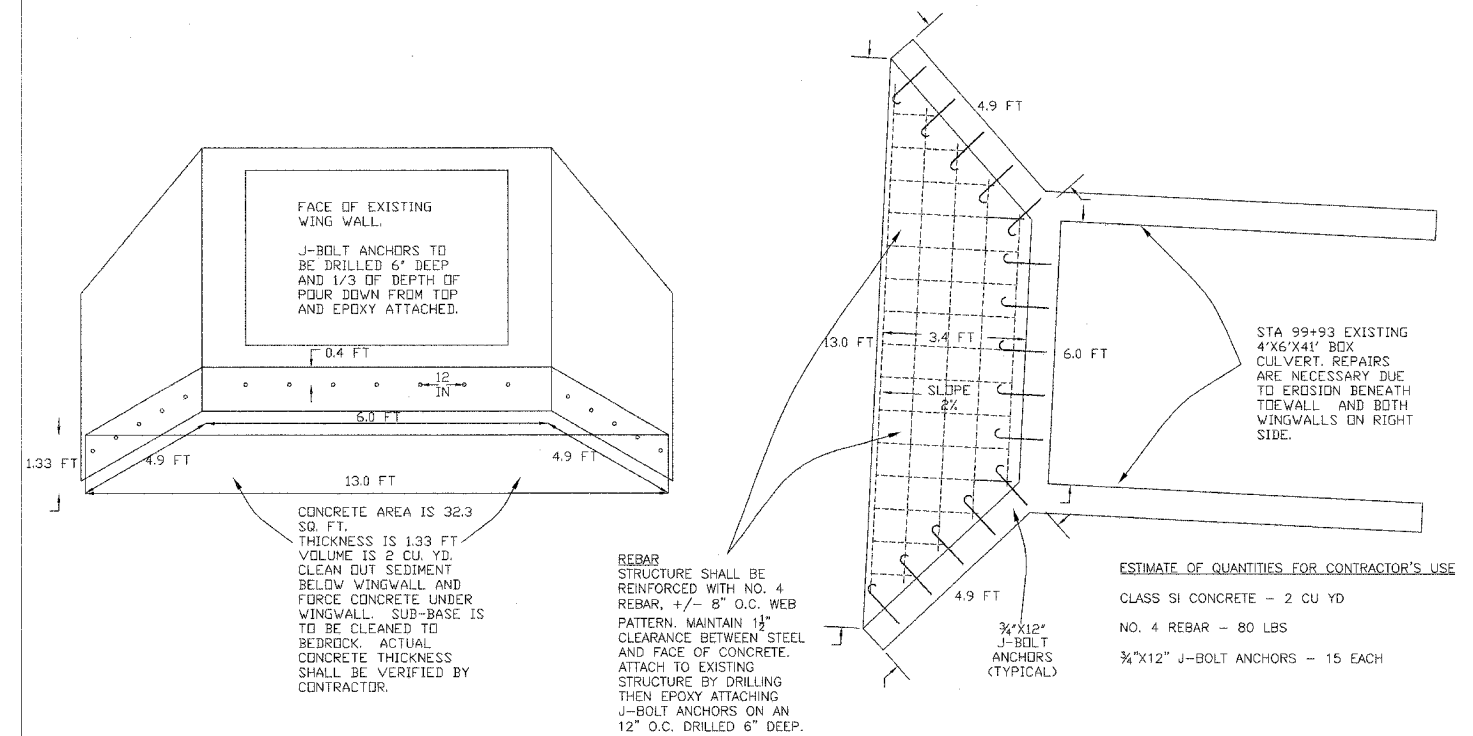


SECTION	COUNTY	TOTAL SHEETS	SHEET NO.
01-00109-00-FP	WAYNE	10	2
FAS ROUTE	FAS 797	NORTH ENTERPRISE	
ILLINOIS PROJECT	RS-797(121)		
CONTRACT NO.	95468		

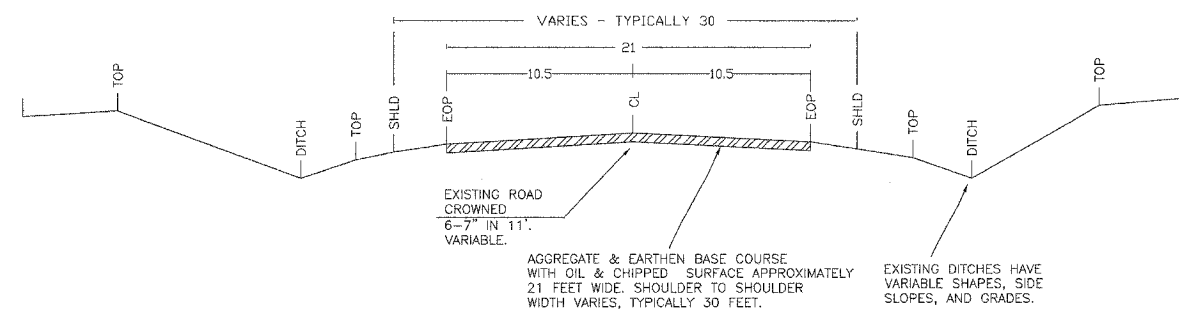
## DETAIL OF INLET STRUCTURE AT STA 33+61 INLETS, SPECIAL 60242400 1 EACH



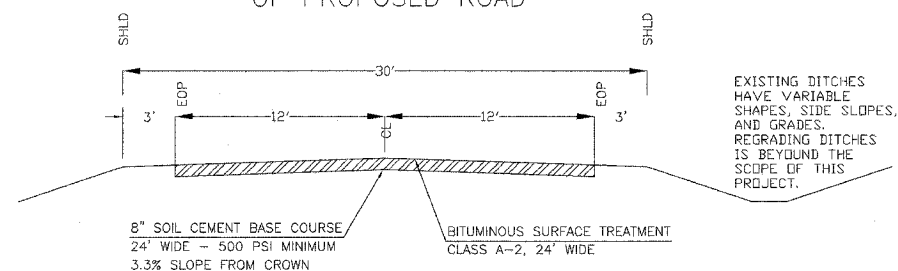
## DETAIL OF REPAIRS TO STRUCTURE AT STA 99+93 SPECIAL STRUCTURE X5030230 1 EACH



## STA. 00+47.9 TO STA. 3390+97.7 TYPICAL CROSS SECTION OF EXISTING ROAD

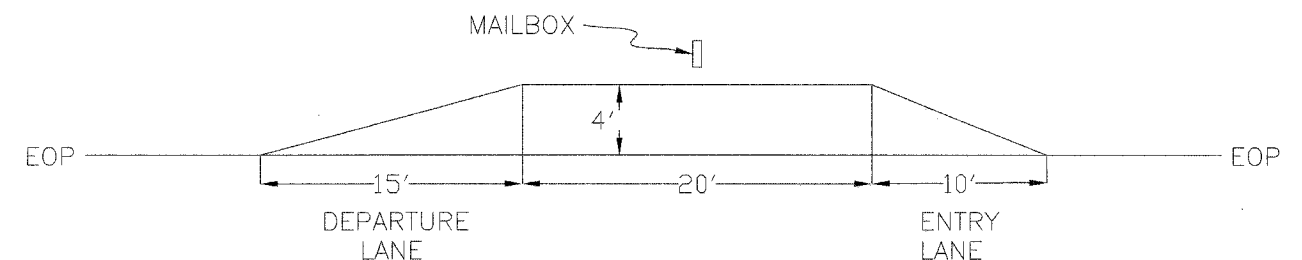


## STA. 00+47.9 TO STA. 339+97.7 TYPICAL CROSS SECTION OF PROPOSED ROAD



## MAILBOX TURNOUT DETAIL OIL & CHIP REQUIRED

NOTE:  
20 TONS OF AGGREGATE SURFACE COURSE TYPE B ALLOWED IN PROPOSAL FOR MAILBOX TURNOUTS AS DIRECTED BY THE ENGINEER.



## GENERAL NOTES

THIS SECTION CONSISTS OF THE CONSTRUCTION OF A 24 FOOT WIDE SOIL-CEMENT BASE COURSE, 8" THICK AND A 24 FOOT WIDE, CLASS A-2 BITUMINOUS SURFACE TREATMENT ALONG THE ENTIRE LENGTH OF THE PROJECT WITH THE EXCEPTION OF THE OMISSION OF THE BRIDGE FROM STA. 281+26.3 TO STA. 283+72.5 AS WELL AS THE REPLACEMENT OF VARIOUS SUBSTANDARD DRAINAGE STRUCTURES. THE OVERALL GRADE OF THE EXISTING ROAD AND DITCHES WILL NOT BE CHANGED. ALL OF THE WORK REQUIRED BY THIS PROJECT SHALL BE IN ACCORDANCE WITH THE PLANS, SPECIAL PROVISIONS, AND "STANDARD SPECIFICATIONS FOR ROAD AND BRIDGE CONSTRUCTION" ADOPTED JANUARY 1, 2002.

THE EXISTING GRADE, ALIGNMENT, DRAINAGE STRUCTURES, BASE AND SURFACE WERE CONSTRUCTED UNDER THE ILLINOIS DEPARTMENT OF TRANSPORTATION'S DESIGN REQUIREMENTS FOR LOCAL ROADS AT THE TIME OF THEIR INITIAL CONSTRUCTION. THE ORIGINAL DESIGN PLANS ARE ON FILE AND AVAILABLE FOR INSPECTION AT THE WAYNE COUNTY HIGHWAY DEPARTMENT IN FAIRFIELD, ILLINOIS.

ORIGINAL PLANS INCLUDED WITHIN THIS PROJECT ARE:  
WAYNE COUNTY SECTION 21 MFT  
WAYNE COUNTY SECTION 55-BG  
WAYNE COUNTY SECTION 8 MFT