

SECTION	COUNTY	TOTAL SHEETS	SHEET NO.
01-00109-00-FP	WAYNE	10	1
FAS ROUTE 797	NORTH ENTERPRISE		
ILLINOIS PROJECT RS-797(121)			
CONTRACT NO. 95468			

INDEX OF SHEETS

SHEET NO.	DESCRIPTION
1	COVER SHEET
2	GENERAL NOTES, AND DETAILS
3	SCHEDULES
4-9	PLAN SHEETS
10	CULVERT CROSS SECTIONS

THE FOLLOWING STANDARDS ARE A PART OF THESE PLANS AND ARE INCLUDED AFTER SHEET NO. 10.

000001-04 STANDARD SYMBOLS, ABBREVIATIONS, AND PATTERNS

542301 PRECAST REINFORCED CONCRETE FLARED END SECTION
542306 PRECAST REINFORCED CONCRETE ELLIPTICAL FLARED END SECTION

701006-02 TYPICAL APPLICATION OF TRAFFIC CONTROL DEVICES
701201-02 TYPICAL APPLICATION OF TRAFFIC CONTROL DEVICES
701301-02 TYPICAL APPLICATION OF TRAFFIC CONTROL DEVICES
BLR 21-6 TYPICAL APPLICATION OF TRAFFIC CONTROL DEVICES
BLR 22-4 TYPICAL APPLICATION OF TRAFFIC CONTROL DEVICES
702001-06 TRAFFIC CONTROL DEVICES

BEFORE DIGGING IN ILLINOIS
...CALL JULIE FIRST AT 1-800-892-0123

JASPER WATER CORPORATION
CONTACT: BILL YOUNG
1-618-842-2918 (HOME)
1-618-237-0164 (CELL)

WABASH TELEPHONE COOP., INC.
CONTACT: TODD SENDER
1-618-665-3311 (OFFICE)
1-618-665-4188 (FAX)

WAYNE / WHITE ELECTRIC
CONTACT: AARON HAWLEY
1-618-842-2196

ELYSIUM ENERGY, L.L.C.
DAVID HUTCHCRAFT, SUPT.
1-618-854-2236 (OFFICE)
1-618-839-8788 (CELL)
-OR-
ERIC EMERY
1-618-676-1044
1-618-839-1174 (CELL)

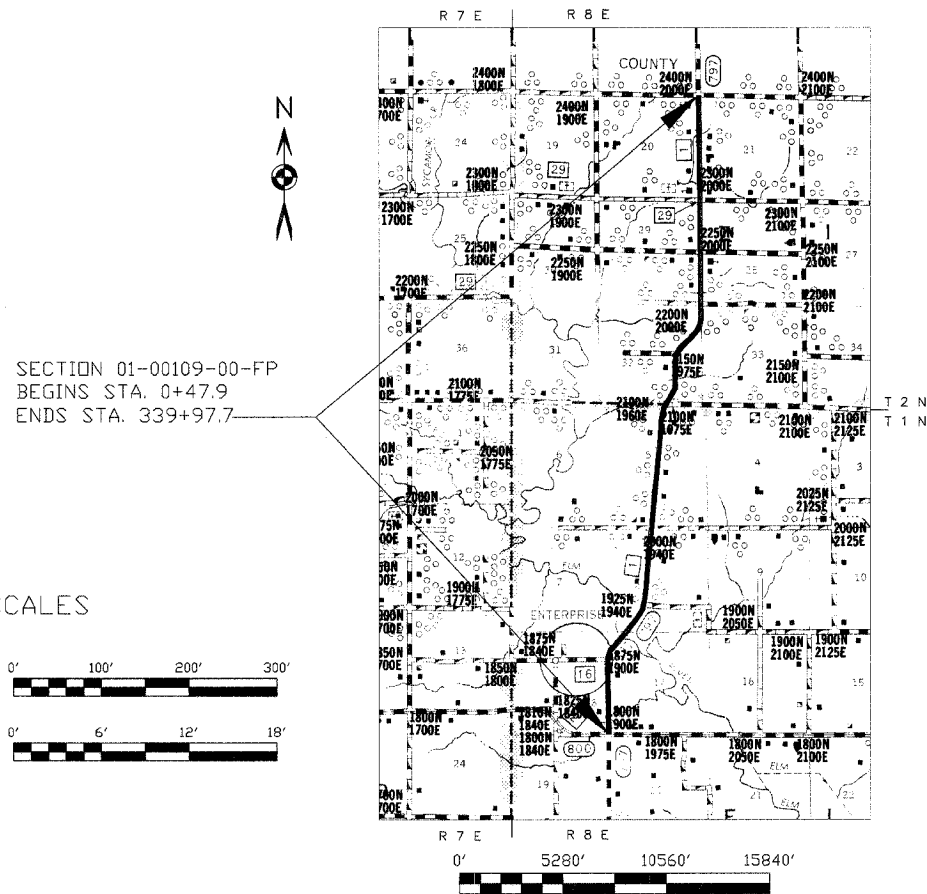
FUNCTIONAL CLASS:

MAJOR COLLECTOR - RURAL
ADT = 1000
DESIGN SPEED = 50 MPH

CONTRACT NO.: 95468

STATE OF ILLINOIS DEPARTMENT OF TRANSPORTATION PLANS FOR PROPOSED LOCAL AGENCY IMPROVEMENT FEDERAL-AID SECONDARY PROJECT

F. A. S. ROUTE 797
SECTION 01-00109-00-FP
WAYNE COUNTY PROJECT RS-797(121)
C-97-078-01



SECTION 01-00109-00-FP
BEGINS STA. 0+47.9
ENDS STA. 339+97.7

SCALES

0' 100' 200' 300'

0' 6' 12' 18'

PLAN
HORIZONTAL

CROSS
SECTION

GROSS LENGTH	33949.8	FEET	6.430	MILES
OMISSIONS (281+26.3 - 283+72.5)	246.2	FEET	0.047	MILES
NET LENGTH	33703.6	FEET	6.383	MILES

SUMMARY OF QUANTITIES

QUANTITY	UNIT	ITEM	CODE NO.
64	UNIT	SHAPING ROADWAY	LR212000
1	EACH	SPECIAL STRUCTURE	X5030230
289	CU YD	CONTROLLED LOW-STRENGTH MATERIAL	Z0013825
0.8	ACRE	SEEDING, CLASS 2 (SPECIAL)	25001000
177	TON	STONE DUMPED RIPRAP, CLASS A4	28100807
286	SQ YD	FILTER FABRIC	28200200
91,150	SQ YD	PROCESSING SOIL-CEMENT BASE COURSE 8"	35200300
51,500	100 WT	CEMENT	35200500
1,440	TON	AGGREGATE SURFACE COURSE, TYPE B	40200800
400	GALLON	BITUMINOUS MATERIALS (PRIME COAT)	40300100
45,650	GALLON	BITUMINOUS MATERIALS (COVER AND SEAL COATS)	40300300
1,140	TON	COVER COAT AGGREGATE	40300500
1,140	TON	SEAL COAT AGGREGATE	40300600
2	EACH	BOX CULVERT END SECTION, CULVERT NO. 1	54001001
2	EACH	BOX CULVERT END SECTION, CULVERT NO. 2	54001002
90	FOOT	PRECAST CONCRETE BOX CULVERT 10' X 5'	54011005
32	FOOT	PIPE CULVERTS, TYPE 1 RCCP 24"	54200439
30	FOOT	PIPE CULVERTS, TYPE 1, CORRUGATED STEEL OR ALUMINUM CULVERT PIPE 12"	54200637
90	FOOT	PIPE CULVERTS, TYPE 1, CORRUGATED STEEL OR ALUMINUM CULVERT PIPE 15"	54200640
40	FOOT	PIPE CULVERTS, TYPE 1, REINFORCED CONCRETE-ELLIPTICAL, EQUIVALENT ROUND-SIZE 18"	54207153
176	FOOT	PIPE CULVERTS, TYPE 1, REINFORCED CONCRETE-ELLIPTICAL, EQUIVALENT ROUND-SIZE 24"	54207159
208	FOOT	PIPE CULVERTS, TYPE 1, REINFORCED CONCRETE-ELLIPTICAL, EQUIVALENT ROUND-SIZE 30"	54207165
2	EACH	PRECAST REINFORCED CONCRETE FLARED END SECTIONS 24"	54213669
1	EACH	PRECAST REINFORCED CONCRETE FLARED END SECTIONS - ELLIPTICAL, EQUIVALENT ROUND-SIZE 18"	54214713
10	EACH	PRECAST REINFORCED CONCRETE FLARED END SECTIONS-ELLIPTICAL, EQUIVALENT ROUND-SIZE 24"	54214719
12	EACH	PRECAST REINFORCED CONCRETE FLARED END SECTIONS-ELLIPTICAL, EQUIVALENT ROUND-SIZE 30"	54214725
1	EACH	INLETS, SPECIAL	60242400
2	CAL MO	ENGINEER'S FIELD LABORATORY	67000600
1	L SUM	TRAFFIC CONTROL AND PROTECTION, STANDARD 701201	70100450
1	L SUM	TRAFFIC CONTROL AND PROTECTION, STANDARD BLR 21	70101830
1	L SUM	TRAFFIC CONTROL AND PROTECTION, STANDARD BLR 22	70101835
1	L SUM	MOBILIZATION	67100100



Michael E. Smith
ILL. REG. PROF. ENGINEER

062-053893

REG. NO.

EXPIRES : 11-30-2007

3/13/06

DATE

APPROVED	<i>March 14 2006</i> <i>Arthur J. Reibisch</i> COUNTY ENGINEER
PASSED	<i>April 4 2006</i> <i>Maureen E. Casto</i> DISTRICT SEVEN ENGINEER OF LOCAL ROADS & STREETS
Releasing For Bid Based on Limited Review	<i>April 4 2006</i> <i>Christina R. Rasmussen</i> DEPUTY DIRECTOR OF HIGHWAYS, REGION FOUR ENGINEER STATE OF ILLINOIS DEPARTMENT OF TRANSPORTATION