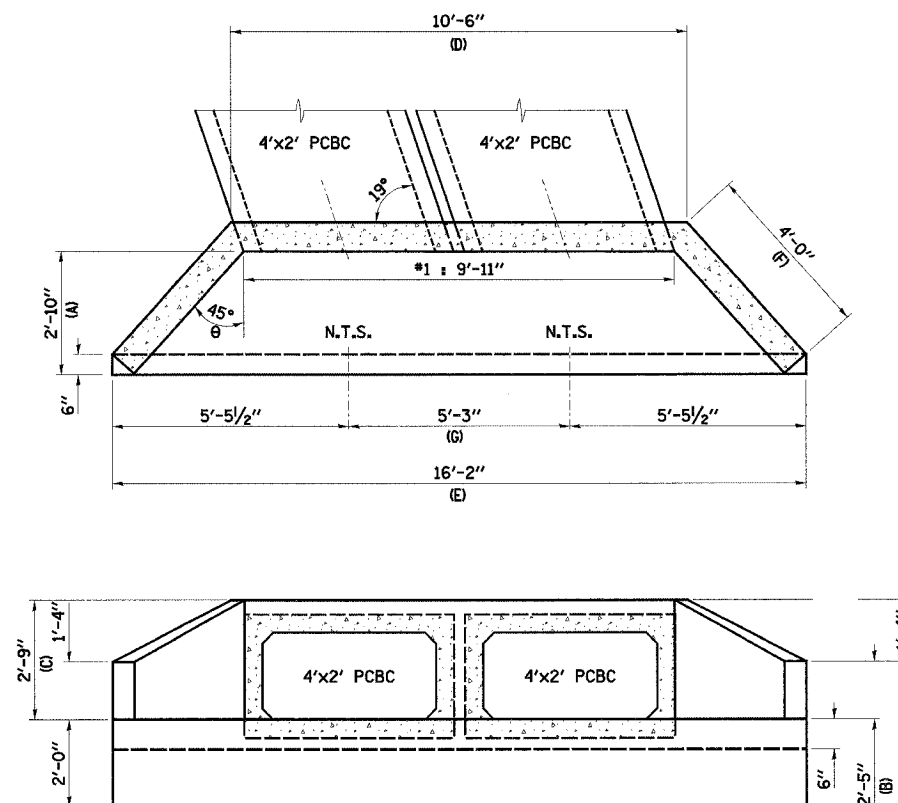


F.A.P. RTE.	SECTION	COUNTY	TOTAL SHEETS	SHEET NO.
750	(112) Y, WRS	FAYETTE	52	29
STA.		TO STA.		
FED. ROAD DIST. NO. 7		ILLINOIS FED. AID PROJECT		

CONTRACT NO. 74080



### STRUCTURE #4 DETAIL

SCALE:  $\frac{1}{2}''=1'-0''$

CAST IN PLACE REINFORCED CONCRETE END SECTIONS, 24"																
EACH																
CULVERT NUMBER	STATION	SIDE	Tw (FT)	Ts (FT)	Ø	θ	A (FT)	B (FT)	C (FT)	D (FT)	E (FT)	F (FT)	G (FT)	•CONCRETE (CY)	•STEEL (LB)	
4	106+82.45	RT.	0.5	0.5	19	45	2.83	2.42	2.75	10.5	16.17	4.0	5.25	1.90	70	
4	106+82.45	LT.	0.5	0.5	19	45	2.83	2.42	2.75	10.5	16.17	4.0	5.25	1.90	70	
TOTALS														3.80	140	

\* INFORMATION ONLY

NOTES:

CAST IN PLACE REINFORCED CONCRETE  
END SECTION SHALL BE CONSTRUCTED  
AS SHOWN TO PROVIDE OPENINGS TO  
ACCOMMODATE 2'X2' BOXES.

C/J DENOTES CONSTRUCTION JOINT

FOR ADDITIONAL DETAIL REFER  
TO HIGHWAY STANDARDS:  
542106

[illegible]

ILLINOIS DEPARTMENT OF TRANSPORTATION

## HEADWALL AND WINGWALL DETAILS

F.A.P. 750 (IL. RTE. 185)  
SECTION 112 - FAYETTE CO.

SCALE:	DRAWN BY	CRO
DATE September 23, 2005	CHECKED BY	RCY

PLAN	SURVEYED _____	BY _____	DATE _____
NOTE BOOK	PLOTTED _____		
NO. _____	ALIGNMENT CHECKED _____		
	RT. OF WAY CHECKED _____		
	CADD FILE NAME _____		

PLAN )	SURVEYED	BY	DATE
	PLOTTED		
	ALIGNMENT CHECKED		
	RT. OF WAY CHECKED		
NOTE BOOK			
NO.	CADD FILE NAME		