

STATE OF ILLINOIS
DEPARTMENT OF TRANSPORTATION
DIVISION OF HIGHWAYS

F.A.P.	SECTION	COUNTY	TOTAL SHEETS	SHEET NO.
VAR.	D4 RUMBLE STRIP 2018	VARIOUS	16	1
		ILLINOIS	CONTRACT NO. 68E38	

D-94-051-18

INDEX OF SHEETS

1. COVER SHEET
2. SUMMARY OF QUANTITIES
3. TYPICAL SECTION
4. SCHEDULE OF QUANTITIES & JOB SPECIFIC NOTES
- 5-13. LOCATION DETAILS
14. RUMBLE STRIP DETAILS
- 15-16. TYPICAL PAVEMENT MARKINGS DISTRICT 4 STANDARD

**PROPOSED
HIGHWAY PLANS**

VARIOUS ROUTES
SECTION: D4 RUMBLE STRIP 2018
PROJECT: HSIP-YQ6N(428)
TYPE OF IMPROVEMENT:
RUMBLE STRIPS AND PAVEMENT MARKINGS
VARIOUS COUNTIES

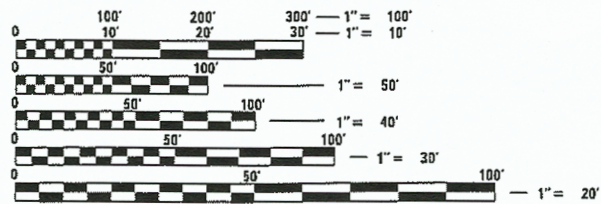
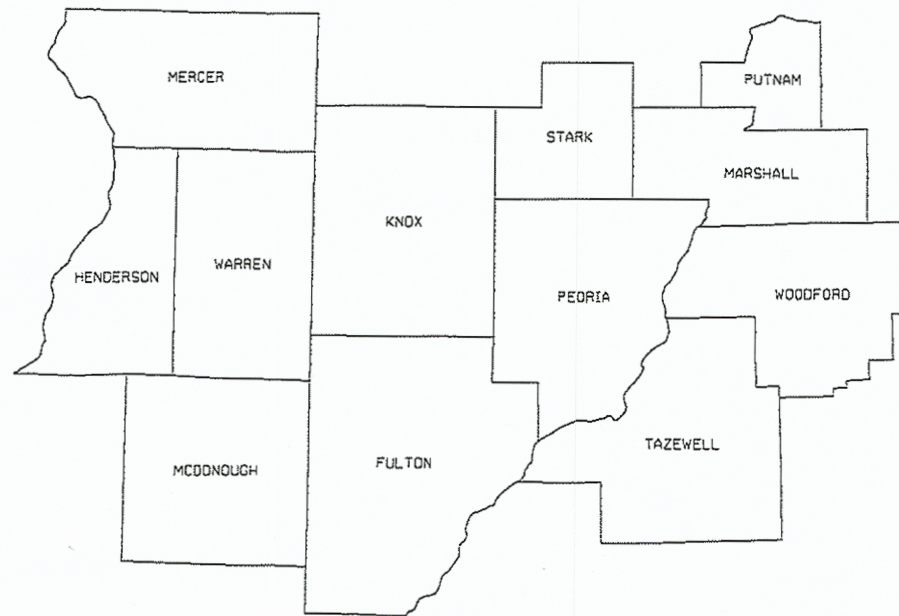
HIGHWAY STANDARDS:

- 701301-04
- 701306-04
- 701311-03
- 701901-07

CADD STANDARDS:

780001-D4

C-94-073-18



FULL SIZE PLANS HAVE BEEN PREPARED USING STANDARD ENGINEERING SCALES. REDUCED SIZED PLANS WILL NOT CONFORM TO STANDARD SCALES. IN MAKING MEASUREMENTS ON REDUCED PLANS, THE ABOVE SCALES MAY BE USED.

J.U.L.I.E.
 JOINT UTILITY LOCATION INFORMATION FOR EXCAVATION
 1-800-892-0123
 OR 811

JOB DESCRIPTION:

THIS PROJECT CONSISTS OF MILLING CENTERLINE AND EDGELINE RUMBLE STRIPS INTO EXISTING ASPHALT PAVEMENT AND REPLACING THE PAVEMENT MARKINGS ON VARIOUS ROUTES IN VARIOUS COUNTIES IN DISTRICT 4.

PROJECT ENGINEER: CHRISTOPHER MAUSHARD, 309-671-3453

PROJECT MANAGER: M. HUDELSON 309-691-3466

CONTRACT NO. 68E38

CATALOG NO. 035626-00D

GROSS LENGTH = N/A

NET LENGTH = N/A

STATE OF ILLINOIS
 DEPARTMENT OF TRANSPORTATION
 DIVISION OF HIGHWAYS

SUBMITTED Mar 20 20 18
Kensil A Garnett (KSD)
 REGION THREE ENGINEER

May 11 20 18
A. ETC
 ENGINEER OF DESIGN AND ENVIRONMENT

May 11 20 18
David J. [Signature]
 DIRECTOR OF HIGHWAYS PROJECT IMPLEMENTATION

**PRINTED BY THE AUTHORITY
OF THE STATE OF ILLINOIS**

MODEL: Default
FILE NAME: P:\11084EBID\INTEC-ILLINOIS\gpr\IDT\Documents\IDT_Offices\District 4\Projects\Squad 5\CADD\Design\Safety\Safety_Rumbles_2018.dgn

CODE NO.	ITEM	UNIT	TOTAL QUANTITY	CONST. CODE
				VARIOUS COUNTIES 90% FEDERAL 10% STATE 0021
67100100	MOBILIZATION	L SUM	1	1
70100460	TRAFFIC CONTROL AND PROTECTION, STANDARD 701306	L SUM	1	1
* 78001110	PAINT PAVEMENT MARKING - LINE 4"	FOOT	39875	39875
* 78009004	MODIFIED URETHANE PAVEMENT MARKING - LINE 4"	FOOT	184607	184607
Z0055400	RUMBLE STRIP	FOOT	178555	178555

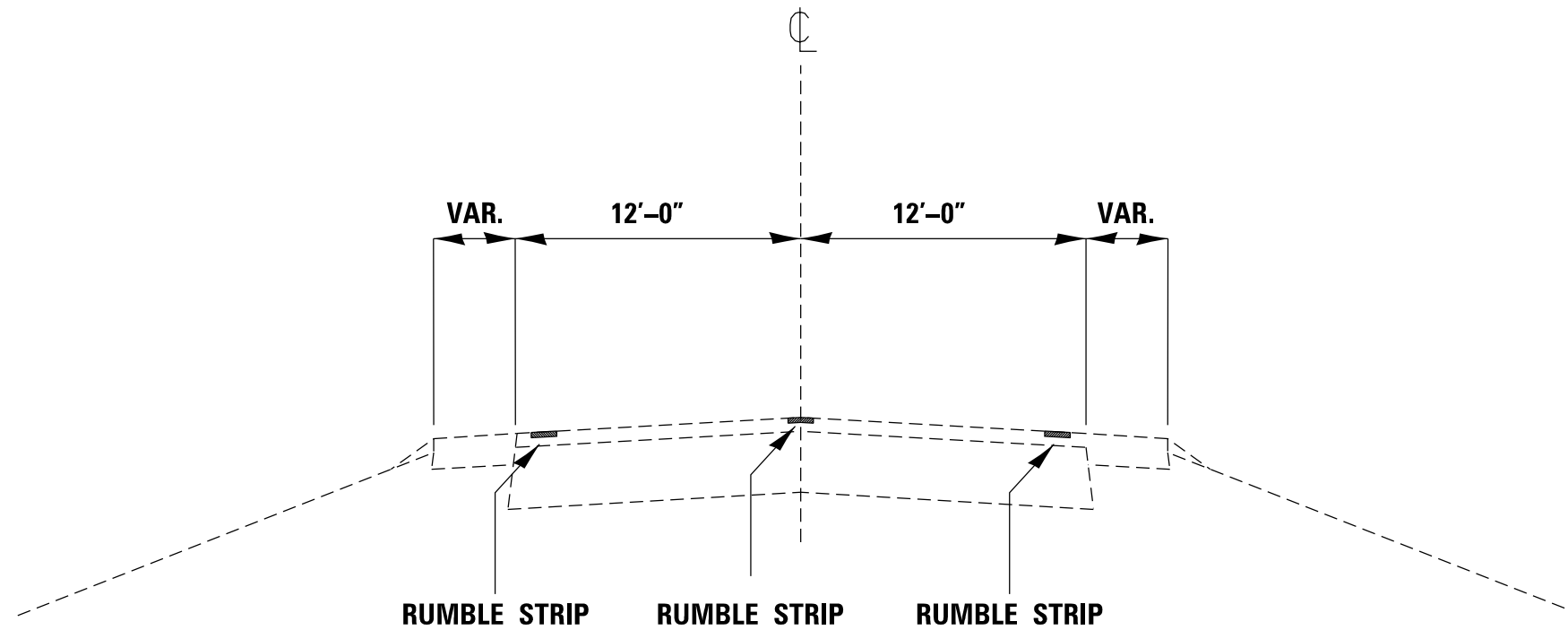
*SPECIALTY ITEMS

USER NAME = hudsonme	DESIGNED -	REVISED -
PLOT SCALE = 100.0000' / in.	DRAWN -	REVISED -
PLOT DATE = 3/22/2018	CHECKED -	REVISED -
	DATE -	REVISED -

**STATE OF ILLINOIS
DEPARTMENT OF TRANSPORTATION**

SUMMARY OF QUANTITIES

F.A.P. VAR.	SECTION	COUNTY	TOTAL SHEETS	SHEET NO.
	D4 RUMBLE STRIP 2018	VARIOUS	16	2
			CONTRACT NO. 68E38	
ILLINOIS FED. AID PROJECT				



(SEE SCHEDULE FOR LOCATIONS)

TYPICAL SECTION

NOT TO SCALE

FILE NAME =	USER NAME = hudelsonme	DESIGNED -	REVISED -	STATE OF ILLINOIS DEPARTMENT OF TRANSPORTATION	TYPICAL SECTIONS			FAP:	SECTION	COUNTY	TOTAL SHEETS	SHEET NO.
p:\11\084EBIDINTEG.illinois.gov\PIWIDOT\Documents\IDOT Offices\District 4\Projects\Squid\Drawings\Design\Safety\Safety Rumble	DRAWN	REVISED	REVISED					VAR.	D4 RUMBLE STRIP 2018	VARIOUS	16	3
Default	PLOT SCALE = 100.0000' / in.	CHECKED -	REVISED -		SCALE: SHEET OF SHEETS STA. TO STA.			CONTRACT NO. 68E38				
	PLOT DATE = 3/22/2018	DATE -	REVISED -		ILLINOIS FED. AID PROJECT							

Location		Rumble Strips		Modified Urethane Pavement Marking - Line 4"			Paint Pavement Marking - Line 4"		
		Edgeline	Centerline	Yellow Solid	Yellow Skips	White Solid	Yellow Solid	Yellow Skips	White Solid
		FT	FT	FT	FT	FT	FT	FT	FT
1	IL 40 - IL 17 north to County Road 2 - Marshall County	19,520	9,760	9,177	2,204	24,220	0	0	0
2	US 24 - Kingston to Banner - Peoria County (Segment 1)	0	22,085	10,602	5,906	0	0	0	0
	US 24 - Kingston to Banner - Fulton County (Segment 2)	0	5,695	8,570	1,281	0	0	0	0
3	IL 9 - Banner to Canton - Fulton County	30,810	15,405	25,510	5,062	58,151	0	0	0
4	IL 29 - North of Henry - Putnam County	28,090	14,045	2,367	457	31,100	0	0	0
5	US 34 - East of Gulfport - Henderson County (Segment 1)	17,300	8,650	0	0	0	2,800	1,925	18,200
	US 34 - Two to Four Lane East - Henderson County (Segment 2)	0	500	0	0	0	1,000	0	0
	US 34 - Two to Four Lane West - Henderson County (Segment 3)	0	575	0	0	0	1,150	0	0
6	IL 78 - Norris to Farmington - Fulton County	0	6,120	0	0	0	14,800	0	0
Subtotal		95,720	82,835	56,226	14,910	113,471	19,750	1,925	18,200
Total		178,555		184,607			39,875		

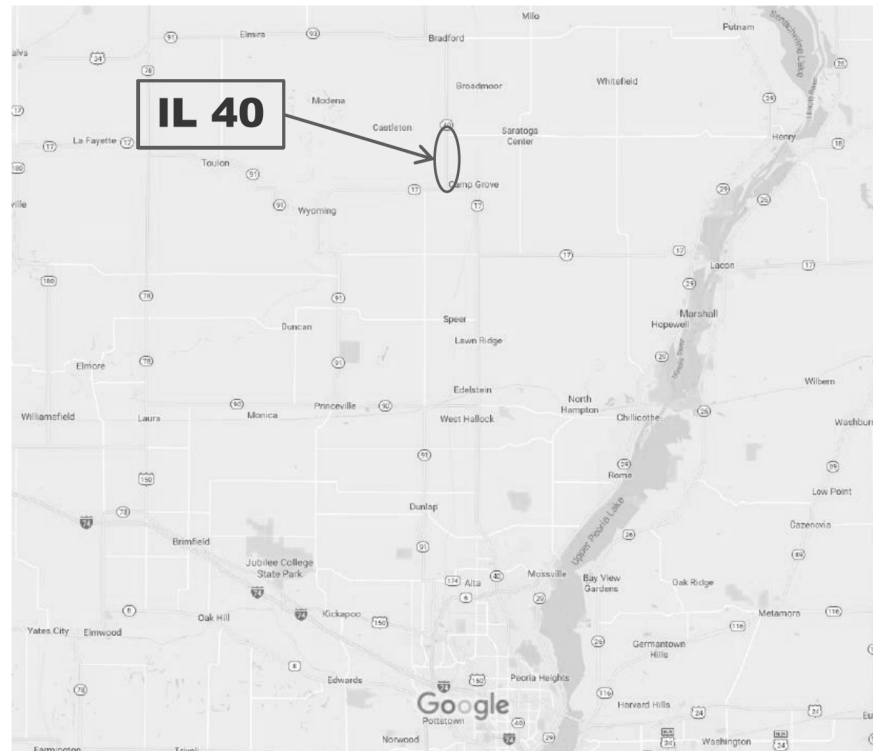
Mobilization	
Location	L SUM
Various Counties	1
Total	1

Traffic Control And Protection, Standard 701306	
Location	L SUM
Various Counties	1
Total	1

For Pavement Marking Locations Contact:

Bill Harrman 309-693-5176
or
Darryl Holmes 309-734-3721

IL 40 – Marshall County IL 17 to Western Road



NOT TO SCALE

FILE NAME =	USER NAME = hudsonme	DESIGNED -	REVISED -
pw\IL084EBIDINTEG.illinois.gov\PIWIDOT\Documents\IDOT Offices\District 4\Projects\Safety\Safety Rumble\DESIGN\Drawings\Safety\Safety Rumble		DRAWN -	REVISED -
Default	PLOT SCALE = 100.0000' / in.	CHECKED -	REVISED -
	PLOT DATE = 3/22/2018	DATE -	REVISED -

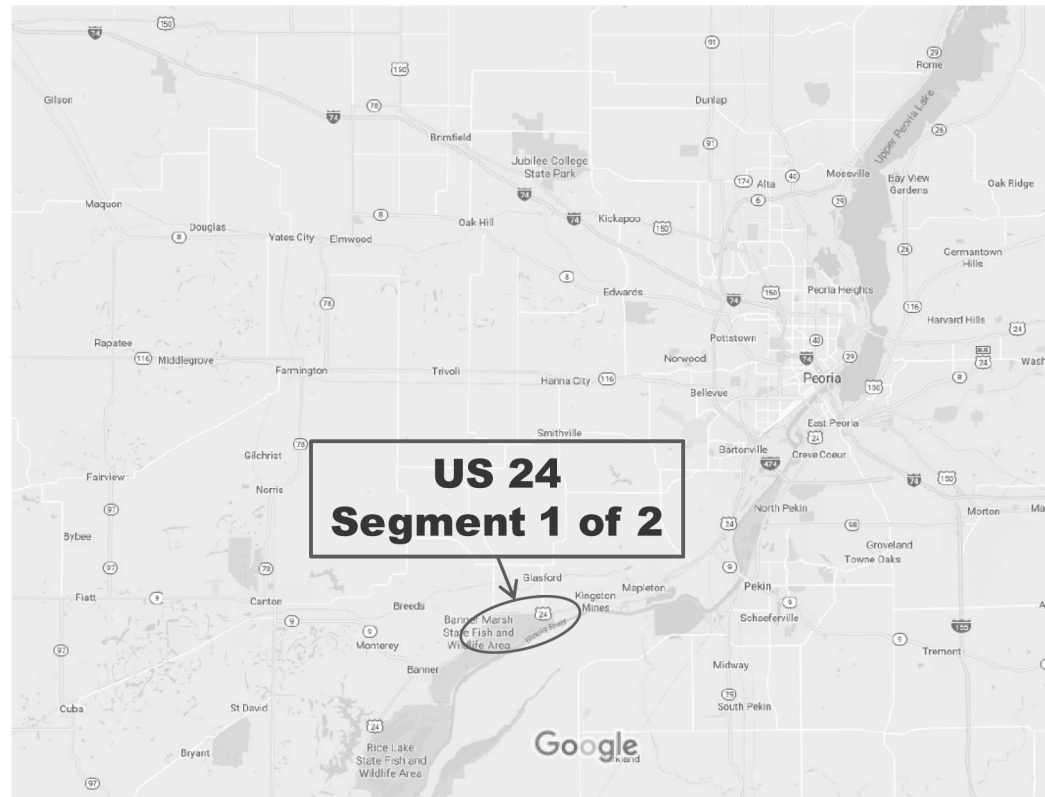
STATE OF ILLINOIS
DEPARTMENT OF TRANSPORTATION

LOCATION 1

SCALE: SHEET OF SHEETS STA. TO STA.

FAP:	SECTION	COUNTY	TOTAL SHEETS	SHEET NO.
VAR.	D4 RUMBLE STRIP 2018	VARIOUS	16	5
CONTRACT NO. 68E38			ILLINOIS FED. AID PROJECT	

US 24 – Peoria County Kingston Mines to Peoria County Line



NOT TO SCALE

FILE NAME =	USER NAME = hudelsonme	DESIGNED -	REVISED -
pw\11084EBIDINTEG.illinois.gov\PI\DOT\Documents\DOT Offices\District 4\Projects\Safety\Safety Rumble\DRAWING\Design\Safety\Safety Rumble		DRAWN -	REVISED -
Default	PLOT SCALE = 100.0000' / in.	CHECKED -	REVISED -
	PLOT DATE = 3/22/2018	DATE -	REVISED -

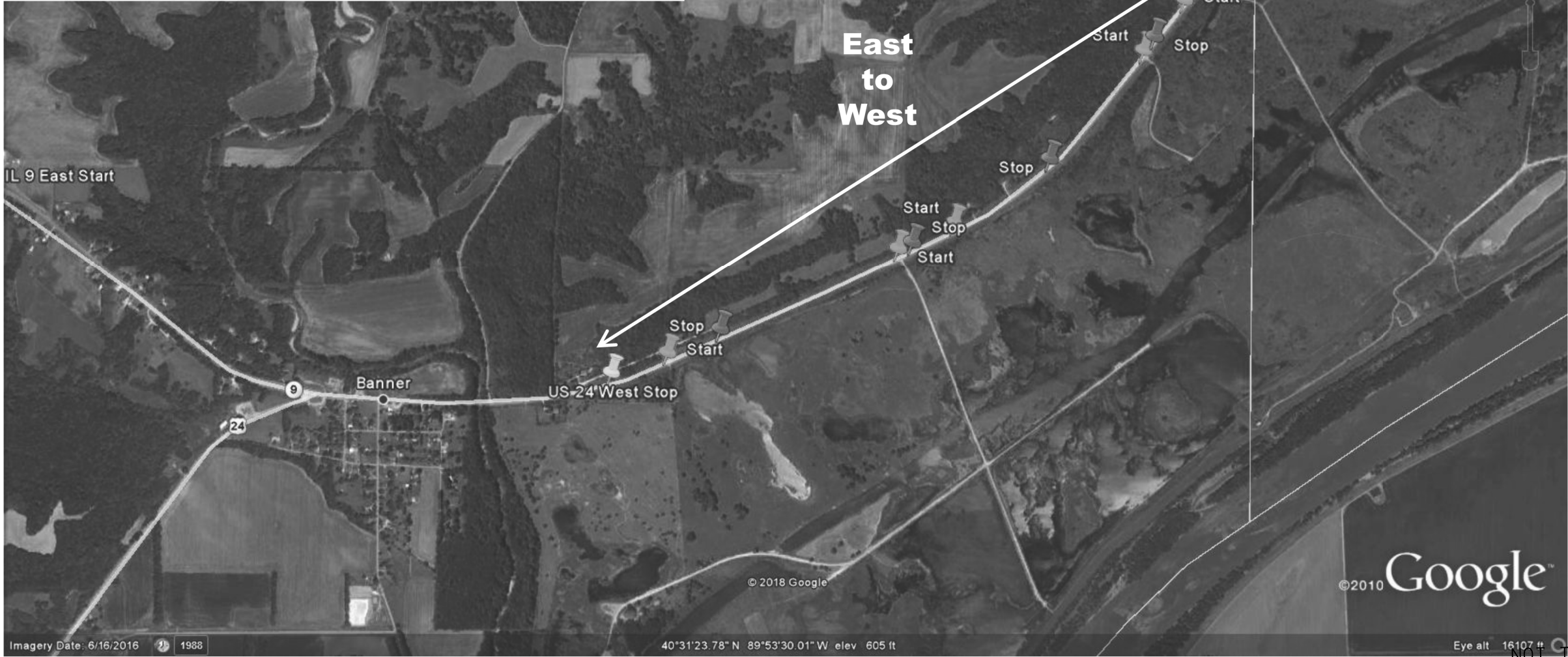
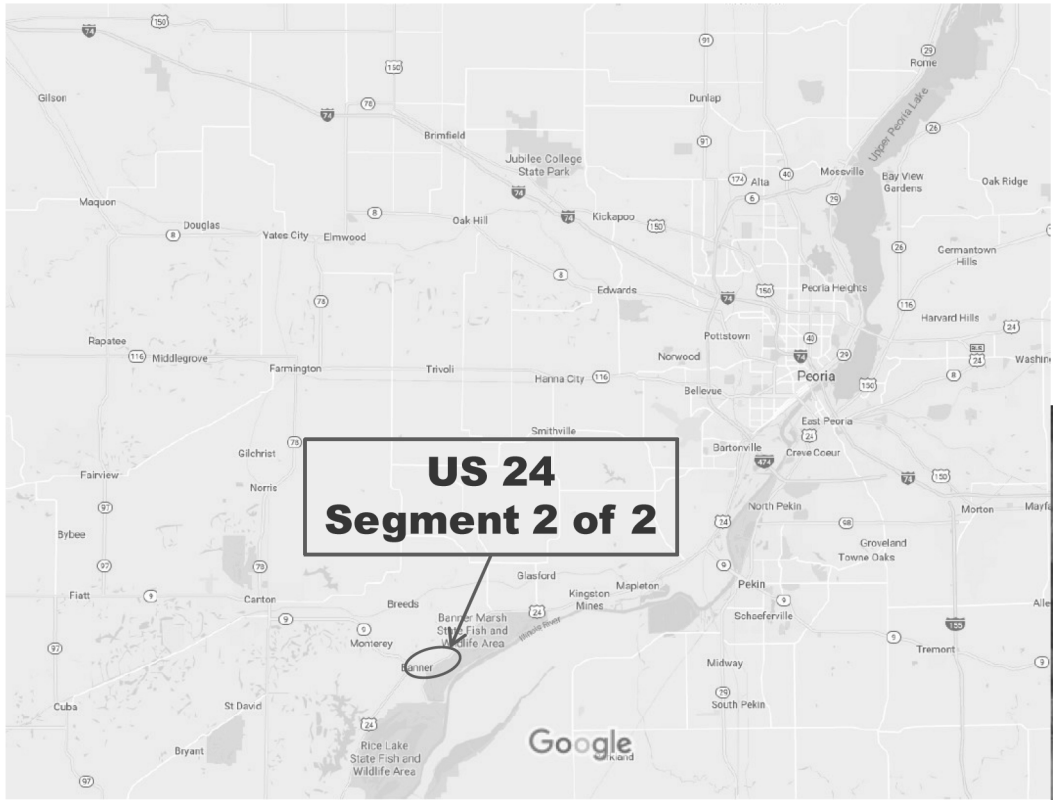
**STATE OF ILLINOIS
DEPARTMENT OF TRANSPORTATION**

LOCATION 2 SEGMENT 1

SCALE: SHEET OF SHEETS STA. TO STA.

FAP:	SECTION	COUNTY	TOTAL SHEETS	SHEET NO.
VAR.	D4 RUMBLE STRIP 2018	VARIOUS	16	6
CONTRACT NO. 68E38			ILLINOIS FED. AID PROJECT	

US 24 – Fulton County Fulton County Line to Banner



NOT TO SCALE

FILE NAME =	USER NAME = hudsonme	DESIGNED -	REVISED -	STATE OF ILLINOIS DEPARTMENT OF TRANSPORTATION	LOCATION 2 SEGMENT 2			FAP:	SECTION	COUNTY	TOTAL SHEETS	SHEET NO.
pw:\IL\084EBIDINTEG\Illinois.gov\PI\DOT\Documents\DOT Offices\District 4\Projects\Safety\Safety Rumble\REVISED -	DRAWN	CHECKED -	REVISED -					VAR.	D4 RUMBLE STRIP 2018	VARIOUS	16	7
Default	PLOT SCALE = 100.0000' / in.	DATE -	REVISED -		SCALE:	SHEET	OF SHEETS	STA.	TO STA.	CONTRACT NO. 68E38		
	PLOT DATE = 3/22/2018	DATE -	REVISED -		ILLINOIS FED. AID PROJECT							

IL 9 – Fulton County Banner to Canton



NOT TO SCALE

FILE NAME =	USER NAME = hudsonme	DESIGNED -	REVISED -
Default		CHECKED -	REVISED -
	PLOT DATE = 3/22/2018	DATE -	REVISED -

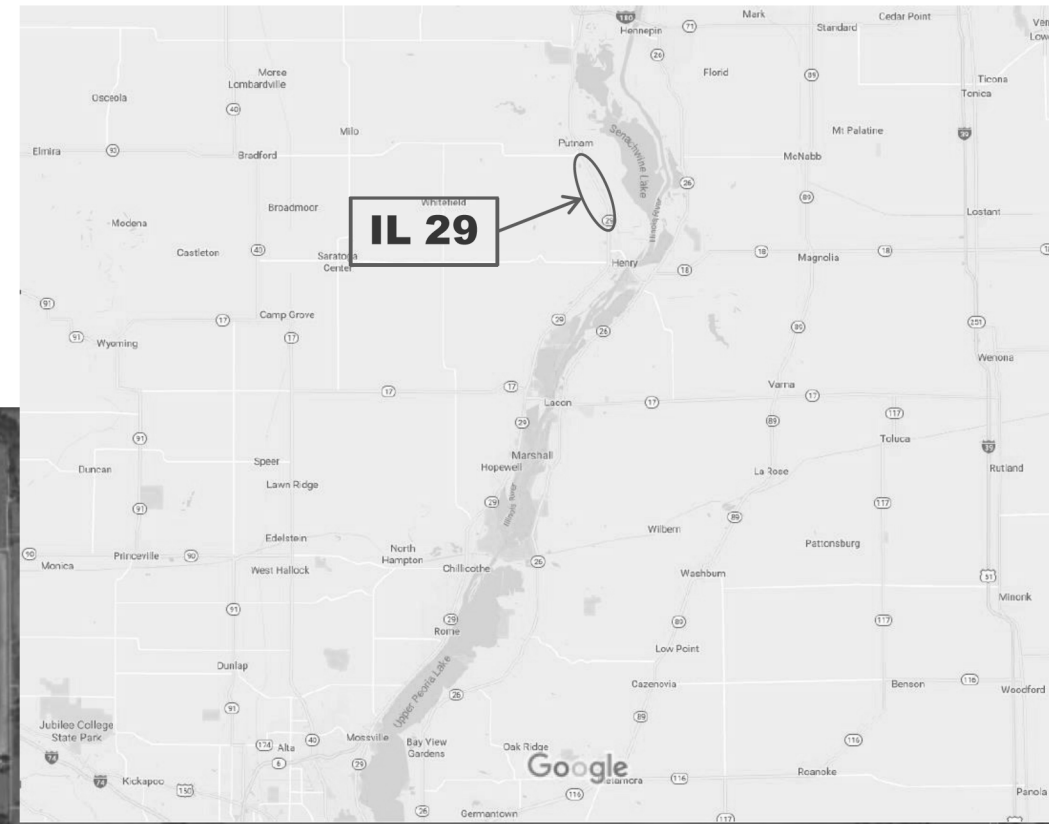
**STATE OF ILLINOIS
DEPARTMENT OF TRANSPORTATION**

LOCATION 3

SCALE: SHEET OF SHEETS STA. TO STA.

FAP:	SECTION	COUNTY	TOTAL SHEETS	SHEET NO.
VAR.	D4 RUMBLE STRIP 2018	VARIOUS	16	8
CONTRACT NO. 68E38			ILLINOIS FED. AID PROJECT	

IL 29 – Putnam County North of Henry to Putnam



NOT TO SCALE

FILE NAME =	USER NAME = hudsonme	DESIGNED -	REVISED -
pw\IL084EBIDINTEG\Illinois.gov\PI\DOT\Documents\DOT Offices\District 4\Projects\Safety\Safety Rumble	DRAWN	CHECKED -	REVISED -
Default	PLOT DATE = 3/22/2018	DATE -	REVISED -

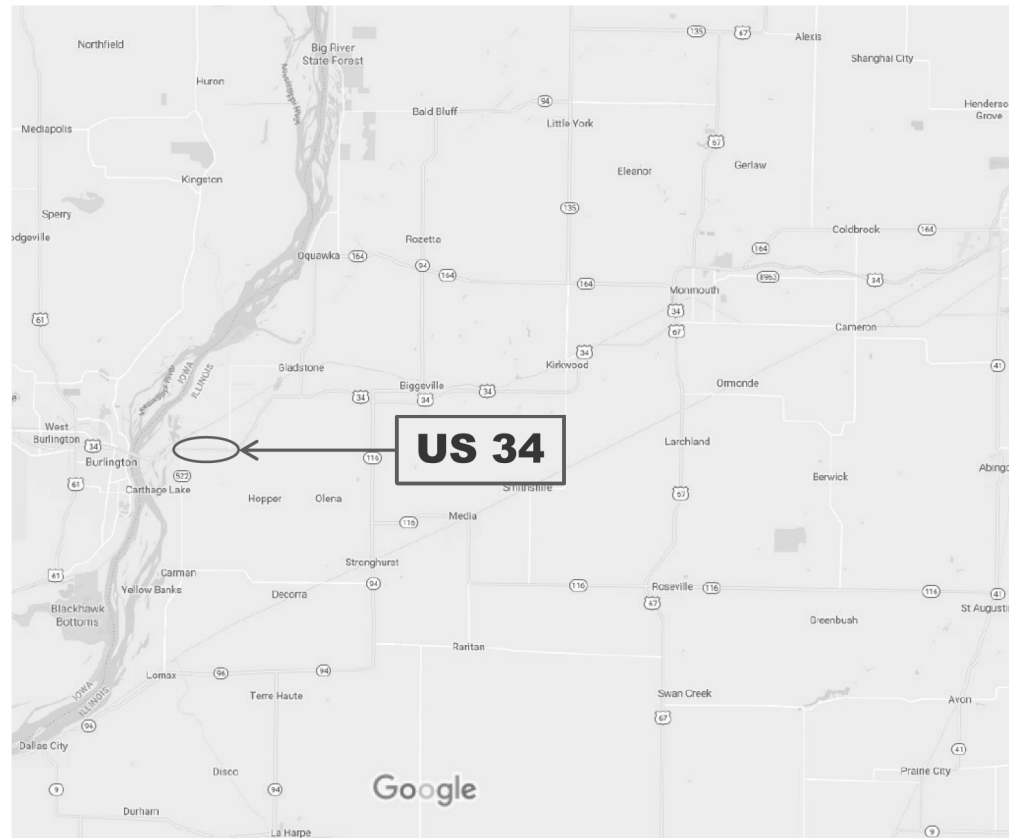
STATE OF ILLINOIS
DEPARTMENT OF TRANSPORTATION

LOCATION 4

SCALE: SHEET OF SHEETS STA. TO STA.

FAP:	SECTION	COUNTY	TOTAL SHEETS	SHEET NO.
VAR.	D4 RUMBLE STRIP 2018	VARIOUS	16	9
CONTRACT NO. 68E38			ILLINOIS FED. AID PROJECT	

US 34 – Henderson County CR 900E to Carman Road



NOT TO SCALE

FILE NAME =	USER NAME = hudsonme	DESIGNED -	REVISED -
pw\11084EBIDINTEG.illinois.gov\PIWIDOT\Documents\DOT Offices\District 4\Projects\Squad\DRAWING\Design\Safety\Safety Rumble		DRAWN	REVISED
Default	PLOT SCALE = 100.0000' / in.	CHECKED -	REVISED -
	PLOT DATE = 3/22/2018	DATE -	REVISED -

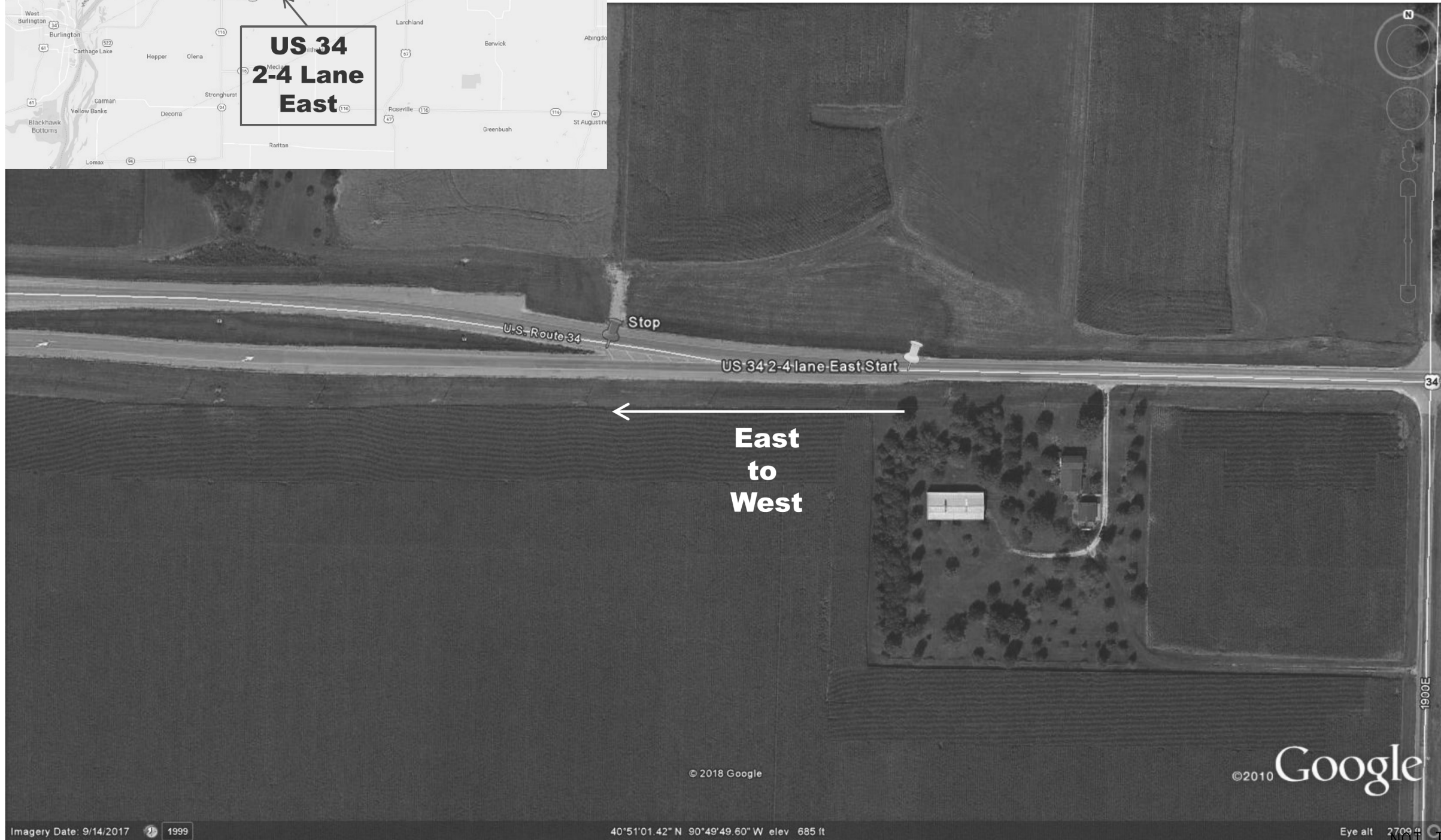
**STATE OF ILLINOIS
DEPARTMENT OF TRANSPORTATION**

LOCATION 5 SEGMENT 1

SCALE: SHEET OF SHEETS STA. TO STA.

FAP:	SECTION	COUNTY	TOTAL SHEETS	SHEET NO.
VAR.	D4 RUMBLE STRIP 2018	VARIOUS	16	10
CONTRACT NO. 68E38			ILLINOIS FED. AID PROJECT	

US 34 – Henderson County Two to Four Lane East of Biggsville



NOT TO SCALE

FILE NAME =	USER NAME = hudelsonme	DESIGNED -	REVISED -	STATE OF ILLINOIS DEPARTMENT OF TRANSPORTATION	LOCATION 5 SEGMENT 2		FAP:	SECTION	COUNTY	TOTAL SHEETS	SHEET NO.					
pw:\IL\084EBIDINTEG.illinois.gov\PIWIDOT\Documents\DOT Offices\District 4\Projects\Squad\BROWN\Design\Safety\Safety Rumble							SCALE:	SHEET	OF	SHEETS	STA.	TO	STA.	VAR.	D4 RUMBLE STRIP 2018	VARIOUS
Default	PLOT SCALE = 100.0000' / in.	CHECKED -	REVISED -		CONTRACT NO. 68E38											
	PLOT DATE = 3/22/2018	DATE -	REVISED -		ILLINOIS FED. AID PROJECT											

US 34 – Henderson County Two to Four Lane West of Biggsville



NOT TO SCALE

FILE NAME =	USER NAME = hudeisonme	DESIGNED -	REVISED -
pw\ill084EBIDINTEG.illinois.gov\PIWIDOT\Documents\IDOT Offices\District 4\Projects\Safety\Safety Rumble Strips\		DRWN	REVISED -
Default	PLOT SCALE = 100.0000' / in.	CHECKED -	REVISED -
	PLOT DATE = 3/22/2018	DATE -	REVISED -

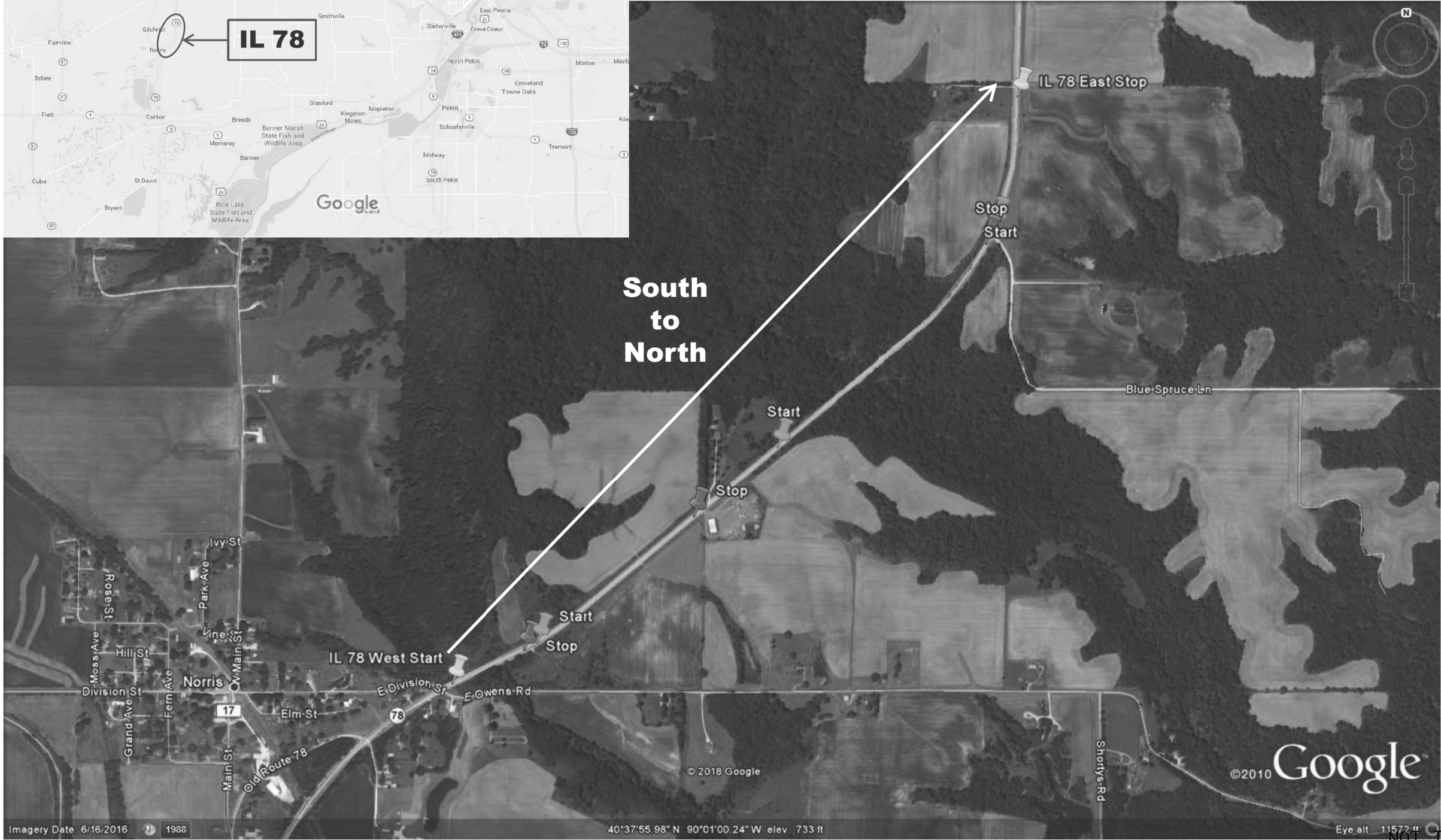
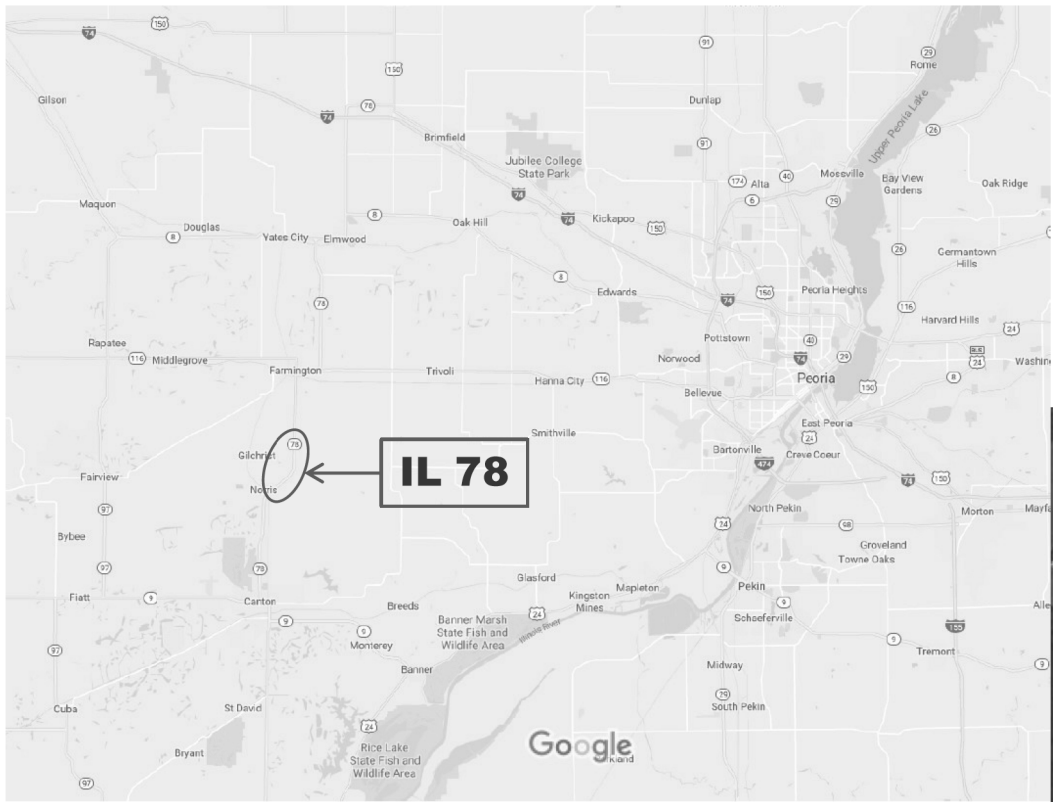
**STATE OF ILLINOIS
DEPARTMENT OF TRANSPORTATION**

LOCATION 5 SEGMENT 3

SCALE: SHEET OF SHEETS STA. TO STA.

FAP:	SECTION	COUNTY	TOTAL SHEETS	SHEET NO.
VAR.	D4 RUMBLE STRIP 2018	VARIOUS	16	12
CONTRACT NO. 68E38			ILLINOIS FED. AID PROJECT	

IL 78 – Fulton County North of Norris



NOT TO SCALE

FILE NAME =	USER NAME = hudsonme	DESIGNED -	REVISED -
pw\IL084EBIDINTEG\Illinois.gov\PIWIDOT\Documents\IDOT Offices\District 4\Projects\Safety\Safety Rumble\DATA\Design\Safety\Safety Rumble		DRWN -	REVISED -
Default	PLOT SCALE = 100.0000' / in.	CHECKED -	REVISED -
	PLOT DATE = 3/22/2018	DATE -	REVISED -

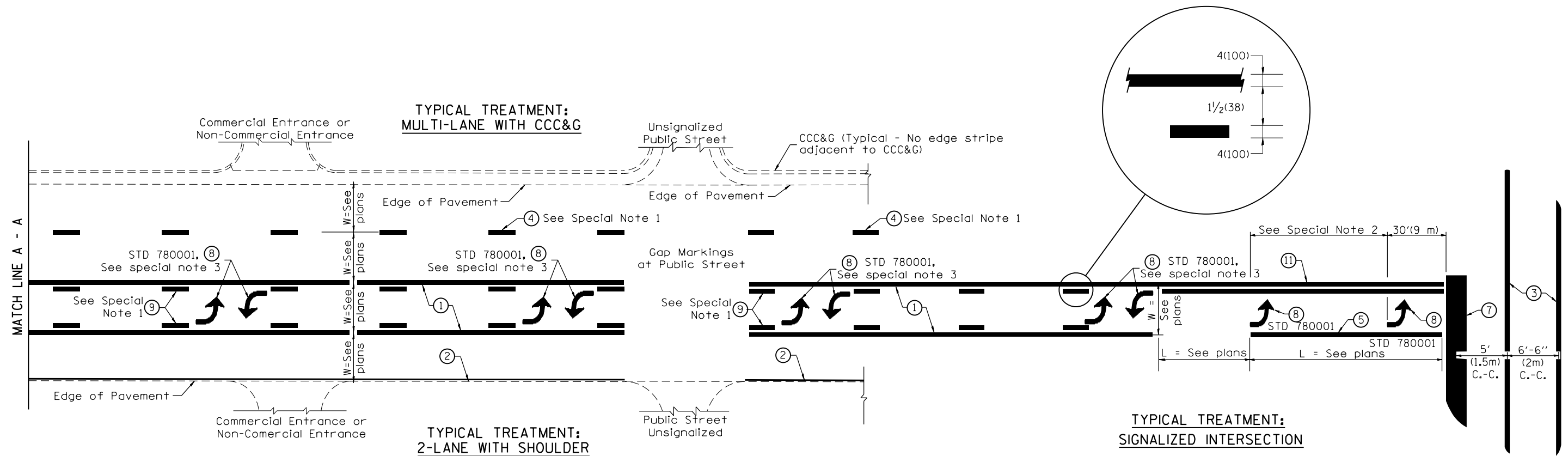
**STATE OF ILLINOIS
DEPARTMENT OF TRANSPORTATION**

LOCATION 6

SCALE: SHEET OF SHEETS STA. TO STA.

FAP:	SECTION	COUNTY	TOTAL SHEETS	SHEET NO.
VAR.	D4 RUMBLE STRIP 2018	VARIOUS	16	13
			CONTRACT NO. 68E38	
ILLINOIS FED. AID PROJECT				

DESIGNER NOTES:
1. Include State Standard 780001 (Typical Pavement Markings)



FLUSH PAVED MEDIAN: TWO-WAY LEFT TURN LANE WITH ONE-WAY LEFT TURN LANE AT SIGNALIZED INTERSECTION

TYPICAL PAVEMENT MARKING LEGEND

(Note: This is a District Standard Legend. Some elements may not apply to specific project.)

- ① 4(100) Solid (Yellow)
- ② 4(100) Solid (White)
- ③ 2-6(150) Crosswalk @ 6'-6" (2m)min C.-C. (White)
2-8(200) Crosswalk @ 6'-6" (2m)min C.-C. (White) (When traffic signals are present.)
- ④ 6(150) Skip-Dash (White) (See Special Note 1)
- ⑤ 8(200) Solid (White)
- ⑥ 12(300) Diagonal (White) (Item ⑥ is shown on Std. 780001)
- ⑦ 24(600) Stop Bar (White)
- ⑧ Letters & Arrows (See Std. 780001 and Special Notes 2 & 3)
- ⑨ 4(100) Skip-Dash (Yellow) (See Special Note 1)
- ⑩ 12(300) Diagonal (Yellow) (See Table A) ⑩
- ⑪ 4(100) Double Solid (Yellow) ⑪

SPECIAL NOTES

- Skip-Dash markings will be centered between both ends of city blocks and shall be placed in alignment transversely across the pavement.
- The following shall apply to arrows located in one-way left turn lanes:
 - A. A minimum of two (2) arrows is required.
 - B. The maximum spacing between arrows is 80' (24 m).
 - C. Arrows shall be evenly spaced if three (3) or more are required.
- The following shall apply to arrow pairs located in two-way left turn lanes:
 - A. A minimum of two (2) arrow pairs is required.
 - B. The maximum spacing between arrow pairs is 200' (61 m).
 - C. Arrow pairs shall be evenly spaced if three (3) or more are required.
 - D. The spacing between Bi Directional Left Turn Arrows is 33' (10 m).

GENERAL NOTES

- Refer to State Standard 780001 for additional Pavement Markings including letters & arrows.
- See Plans for Pavement Markings adjacent to curbed islands and medians, and through lane reductions.
- Refer to Article 780.13 for letter, number and symbol areas (sq. ft.)
- Areas are grooved 1" beyond each edge for the following symbols:
Through Arrow= 14.8 sq. ft.
Large Left or Right Arrow= 21.9 sq. ft.
2 Arrow Combination Left (or Right) and Through= 34.9 sq. ft.
Wrong Way Arrow= 29.5 sq. ft.
Railroad Crossing Symbol= 69.8 sq. ft.
(For further information, refer to BDE Special Provision: Grooving for Recessed Pavement Markings)

01-01-97	RENUM. F-8.03, NEW REVISION BOX	T.P.	10-16-06	REVISED TO 2007 SPEC.	
02-07-97	ADD BI DIRECTIONAL DIMENSION	J.A.	2/29/16	ADDED GROOVING AREAS	R.D.
10-97	CORRECT BI DIRECTIONAL DIMENSION	J.A.			
08-02	ADD CROSSWALK DMNS. WITH T.S.	M.A.			

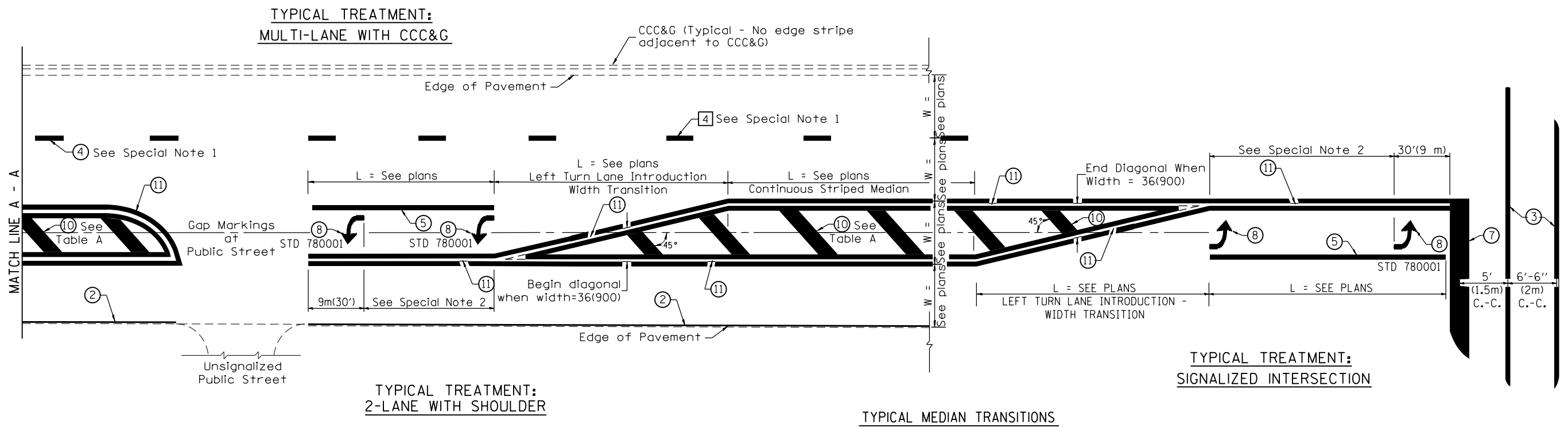
**STATE OF ILLINOIS
DEPARTMENT OF TRANSPORTATION**

NOT TO SCALE

TYPICAL PAVEMENT MARKINGS

SHT. 1 OF 2
CADD STD. 780001-D4

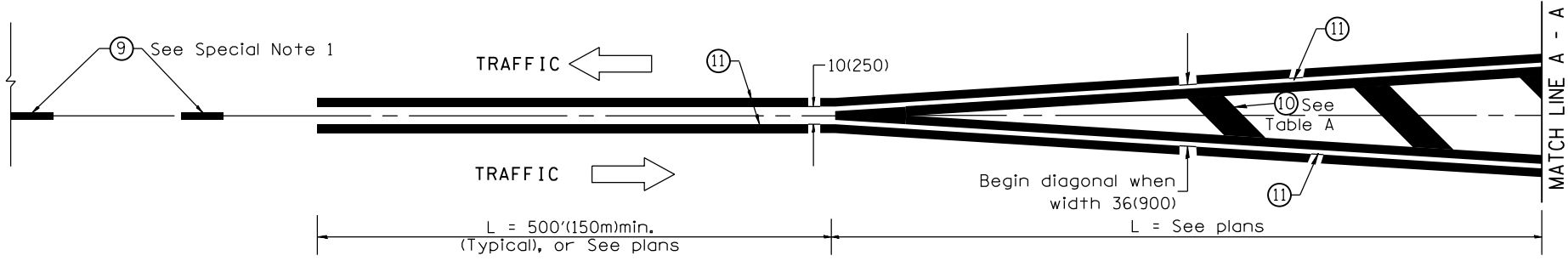
F.A.P. VAR.	SECTION	COUNTY	TOTAL SHEETS	SHEET NO.
	D4 RUMBLE STRIP 2018	VARIOUS	16	15
FED. ROAD DIST. NO. ILLINOIS FED. AID PROJECT			CONTRACT NO. 68E38	



FLUSH PAVED MEDIAN: RESTRICTED LEFT TURN LANE

TABLE A
RECOMMENDED SPACING BETWEEN DIAGONAL LINES

SPEED LIMIT RANGE	INTERSECTION CHANNELIZATION (Includes Width Transitions for Median and Left Turn Lane Introductions)	
	CONTINUOUS	
Less Than 30 mph (50 km/h)	50' (15m)	15' (5m)
30 - 45 mph (50 - 70 km/h)	75' (23m)	20' (6m)
Over 45 mph (70 km/h)	150' (46m)	30' (9m)



MEDIAN INTRODUCTION - WIDTH TRANSITIONS

All dimensions are in inches (millimeters) unless otherwise noted.