

- 1. COVER SHEET
- 2. GENERAL NOTES
- 3 - 4. SUMMARY OF QUANTITIES
- 5 - 6. TYPICAL SECTIONS
- 7 - 12. SCHEDULES
- 13. TRAFFIC CONTROL AND PROTECTION, STANDARD 701400
- 14 - 15. CLASS A PATCHING DETAILS
- 16 - 17. CLASS B PATCHING DETAILS
- 18. PAVEMENT MARKING DETAILS

STANDARDS

- 000001-06 STANDARD SYMBOLS, ABBREVIATIONS AND PATTERNS
- 001001-02 AREAS OF REINFORCEMENT BARS
- 001006 DECIMAL OF AN INCH AND OF A FOOT
- 701101-05 OFF-ROAD OPERATIONS, MULTILANE, 15' (4.5 m) TO 24" (600 mm) FROM PAVEMENT EDGE
- 701401-11 LANE CLOSURE, FREEWAY/EXPRESSWAY
- 701426-09 LANE CLOSURE, MULTILANE INTERMITTENT OR MOVING OPERATION, FOR SPEEDS ≥ 45 MPH
- 701428-01 TRAFFIC CONTROL, SETUP AND REMOVAL, FREEWAY/EXPRESSWAY
- 701901-07 TRAFFIC CONTROL DEVICES
- 701106-02 OFF-RD OPERATIONS, MULTILANE, MORE THAN 15' (4.5 m) AWAY
- 701400-09 APPROACH TO LANE CLOSURE, FREEWAY/EXPRESSWAY
- 701411-09 LANE CLOSURE, MULTILANE, AT ENTRANCE OR EXIT RAMP, FOR SPEEDS ≥ 45 MPH

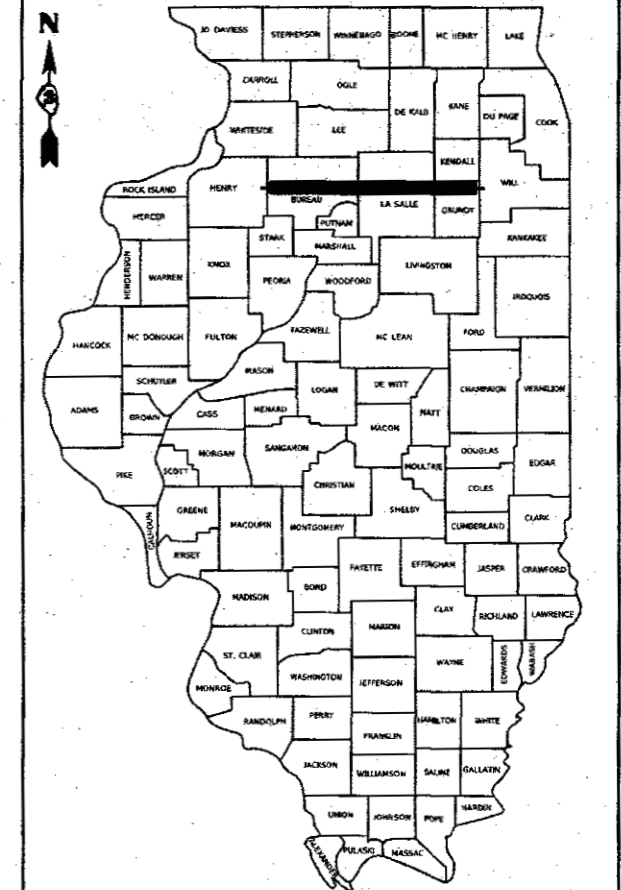
STATE OF ILLINOIS
DEPARTMENT OF TRANSPORTATION

**PROPOSED
HIGHWAY PLANS**
F.A. I. ROUTE 80 (I-80)
SECTION D3 I-80 PP 2019-1
PROJECT
PAVEMENT PATCHING
BUREAU, LASALLE & GRUNDY COUNTIES

C-93-073-18

F.A.I. RTE.	SECTION	COUNTY	TOTAL SHEETS	SHEET NO.
80	D3 I-80 PP 2019-1		18	1

D-93-069-18



LOCATION OF SECTION INDICATED THUS: -

FUNCTIONAL CLASSIFICATION
RURAL/URBAN INTERSTATE
F.A.I. ROUTE 80 (I-80)
2017 ADT = 42300
P.V. 49.1% S.U. 11.4% M.U. 39.5%

STATE OF ILLINOIS
DEPARTMENT OF TRANSPORTATION

SUBMITTED 3-29 2018
[Signature] REGIONAL ENGINEER
[Signature] ENGINEER OF DESIGN AND ENVIRONMENT
[Signature] DIRECTOR OF HIGHWAYS PROJECT IMPLEMENTATION

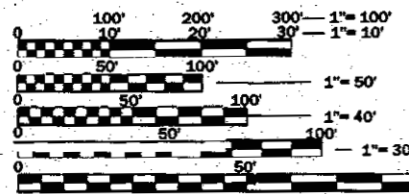
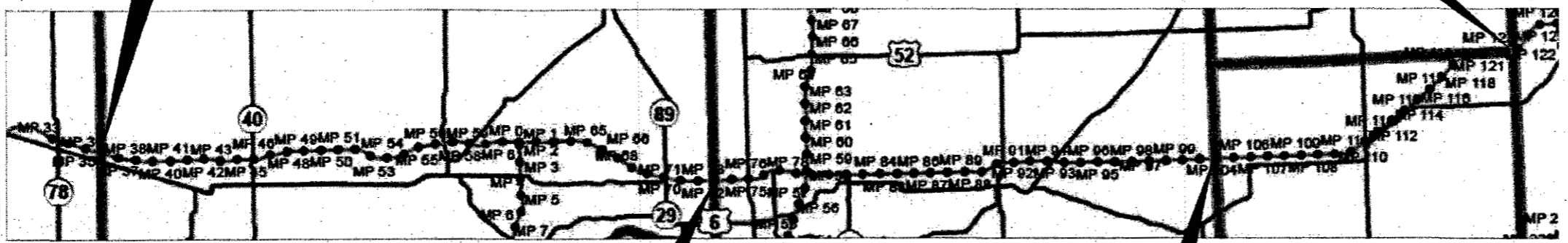
**PRINTED BY THE AUTHORITY
OF THE STATE OF ILLINOIS**

IMPROVEMENT BEGINS

HENRY/BUREAU COUNTY LINE
(M.M. 35.96)

IMPROVEMENT ENDS

GRUNDY/WILL COUNTY LINE
(M.M. 122.75)



BUREAU/LASALLE COUNTY LINE
(M.M. 73.00)

LASALLE/GRUNDY COUNTY LINE
(M.M. 102.99)

FULL SIZE PLANS HAVE BEEN PREPARED USING STANDARD ENGINEERING SCALES. REDUCED SIZED PLANS WILL NOT CONFORM TO STANDARD SCALES. IN MAKING MEASUREMENTS ON REDUCED PLANS, THE ABOVE SCALES MAY BE USED.

J.U.L.I.E.
JOINT UTILITY LOCATION INFORMATION FOR EXCAVATION
1-800-892-0123
OR 811

PROJECT ENGINEER: JOE KANNEL P.E.
UNIT CHIEF: RON WOODSHANK
DISTRICT 3 NO. (815) 434-6131
CONTRACT NO. 66J29

GROSS LENGTH = 458,251 FT. = 86.79 MILES
NET LENGTH = 539 FT. = 0.102 MILES

GENERAL NOTES

PLAN DIMENSIONS AND DETAILS RELATIVE TO EXISTING PLANS ARE SUBJECT TO NOMINAL CONSTRUCTION VARIATIONS. THE CONTRACTOR SHALL FIELD VERIFY EXISTING DIMENSIONS AND DETAILS AFFECTING NEW CONSTRUCTION AND MAKE NECESSARY APPROVED ADJUSTMENTS PRIOR TO CONSTRUCTION OR ORDERING OF MATERIALS. SUCH VARIATIONS SHALL NOT BE CAUSE FOR ADDITIONAL COMPENSATION FOR A CHANGE IN SCOPE OF WORK; HOWEVER, THE CONTRACTOR WILL BE PAID FOR THE QUANTITY ACTUALLY FURNISHED AT THE UNIT PRICE BID FOR THE WORK.

FOR STABILIZATION, ALL TYPE III BARRICADES WILL REQUIRE A MINIMUM OF FOUR SAND BAGS PER BARRICADE.

ALL EXCAVATED MATERIAL, WHICH INCLUDES DIGGING OR GRADING OF ANY SOIL OR FILL MATERIAL, WITH THE EXCEPTION OF AGGREGATE FILLS, MUST BE INCORPORATED WITHIN THE IDOT RIGHT OF WAY DUE TO ENVIRONMENTAL DOCUMENTATION REQUIREMENTS.

ANY REFERENCE TO A STANDARD IN THESE PLANS SHALL BE INTERPRETED TO MEAN THE EDITION AS INDICATED BY THE SUBNUMBER SHOWN IN THE LIST OF STANDARDS OR THE COPY INCLUDED IN THESE PLANS.

THE CONTRACTOR SHALL CONTACT JULIE AT LEAST 48 HOURS PRIOR TO EXCAVATION TO DETERMINE WHICH UTILITIES ARE IN THE AREA.

COMMITMENTS

STATE OF ILLINOIS
DEPARTMENT OF TRANSPORTATION
DISTRICT THREE
AS BUILT INFORMATION

SUPERVISING CONSTRUCTION FIELD ENGINEER

RESIDENT ENGINEER / TECHNICIAN

START & END DATES
OF CONSTRUCTION:

INSPECTORS:

STATE OF ILLINOIS
DEPARTMENT OF TRANSPORTATION
DISTRICT THREE

PREPARED BY: Tom Benick
DISTRICT STUDIES & PLANS ENGINEER

DATE: 3-27-18

EXAMINED BY: Kyle Vilegas
DISTRICT CONSTRUCTION ENGINEER

Michael Ashut
DISTRICT MATERIALS ENGINEER

J. H. [Signature]
DISTRICT OPERATIONS ENGINEER

FILE NAME =	USER NAME = woodyswp	DESIGNED -	REVISED -
par\1804\ESD\INTEG\Illinois.gov\PWDOT\Documents\DOT Offices\District 3\Projects\0365.029\CAD\Detail\66.029-Details.dwg		DRAWN -	REVISED -
Default	PLOT SCALE = 100.0000 1/in.	CHECKED -	REVISED -
	PLOT DATE = 3/24/2018	DATE -	REVISED -

STATE OF ILLINOIS
DEPARTMENT OF TRANSPORTATION

GENERAL NOTES

SCALE: SHEET 1 OF 1 SHEETS STA. TO STA.

F.A.I. RTE.	SECTION	COUNTY	TOTAL SHEETS	SHEET NO.
80	D3 I-80 PP 2019-1	*	18	2
*BUREAU, LASALLE & GRUNDY			CONTRACT NO. 66J29	
ILLINOIS FED. AID PROJECT				

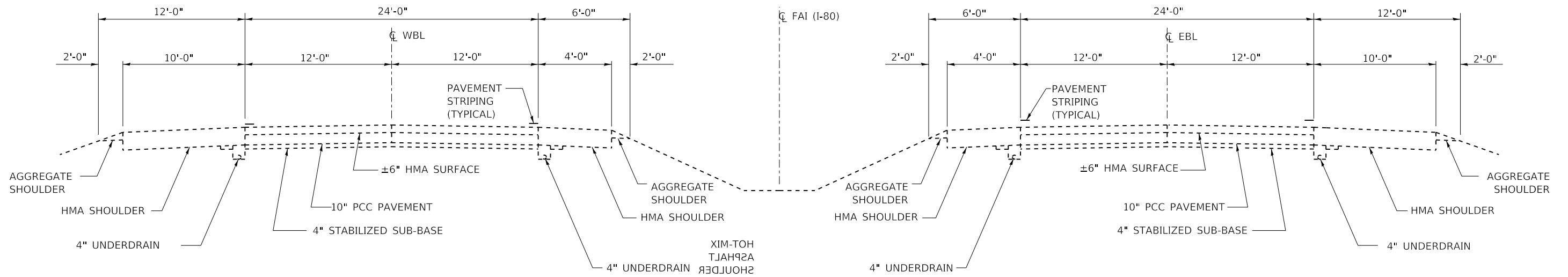
CODE NO.	ITEM	UNIT	TOTAL QUANTITY	CONSTRUCTION CODE					
				CONTRACT MAINTENANCE					
				100% STATE					
				ROADWAY 0005		ROADWAY 0005		ROADWAY 0005	
BUREAU CO.		LASALLE CO.		GRUNDY CO.					
RURAL	URBAN	RURAL	URBAN	RURAL	URBAN				
44200050	WELDED WIRE REINFORCEMENT	SQ YD	116	76	40				
44200620	CLASS A PATCHES, TYPE II, 14 INCH	SQ YD	47						47
44200645	CLASS A PATCHES, TYPE II, 16 INCH	SQ YD	95					95	
44200646	CLASS A PATCHES, TYPE III, 16 INCH	SQ YD	16					16	
44200647	CLASS A PATCHES, TYPE IV, 16 INCH	SQ YD	27					27	
44201043	CLASS B PATCHES, TYPE II, 16 INCH	SQ YD	461	132	172	93	64		
44201047	CLASS B PATCHES, TYPE III, 16 INCH	SQ YD	83	43	40				
44201048	CLASS B PATCHES, TYPE IV, 16 INCH	SQ YD	33	33					
44201299	DOWEL BARS 1 1/2"	EACH	1092	304	408	220	160		
44213000	PATCHING REINFORCEMENT	SQ YD	185					138	47
44213200	SAW CUTS	FOOT	3990	1032	1106	536	384	512	420
44213204	TIE BARS 3/4"	EACH	791	52	15			556	168
67100100	MOBILIZATION	L SUM	1	0.34			0.33	0.33	
70100420	TRAFFIC CONTROL AND PROTECTION, STANDARD 701411	EACH	35	8	4		15		8

14

CODE NO.	ITEM	UNIT	TOTAL QUANTITY	CONSTRUCTION CODE					
				CONTRACT MAINTENANCE					
				100% STATE					
				ROADWAY 0005		ROADWAY 0005		ROADWAY 0005	
BUREAU CO.		LASALLE CO.		GRUNDY CO.					
RURAL	URBAN	RURAL	URBAN	RURAL	URBAN				
70100800	TRAFFIC CONTROL AND PROTECTION, STANDARD 701401	L SUM	1	0.32	0.29	0.11	0.07	0.16	0.05
70103815	TRAFFIC CONTROL SURVEILLANCE	CAL DAY	18	4	4	3	2	3	2
70200100	NIGHTTIME WORK ZONE LIGHTING	L SUM	1	0.17	0.16	0.17	0.17	0.17	0.16
* 78008210	POLYUREA PAVEMENT MARKING TYPE I - LINE 4"	FOOT	629	210	169	70	54	90	36
* 78008230	POLYUREA PAVEMENT MARKING TYPE I - LINE 6"	FOOT	720	170	200	100	80	130	40
X0325969	PORTABLE, VEHICLE MOUNTED, CHANGEABLE MESSAGE BOARD	CAL DAY	18	4	4	3	2	3	2
X0326880	MESSAGE BOARD VEHICLE DRIVER	HOUR	180	40	40	30	20	30	20
X2700001	TEMPORARY RUMBLE STRIPS (SPECIAL)	EACH	33	13	6	6	2	3	3
X7015005	CHANGEABLE MESSAGE SIGN	CAL DAY	60	22			19	19	

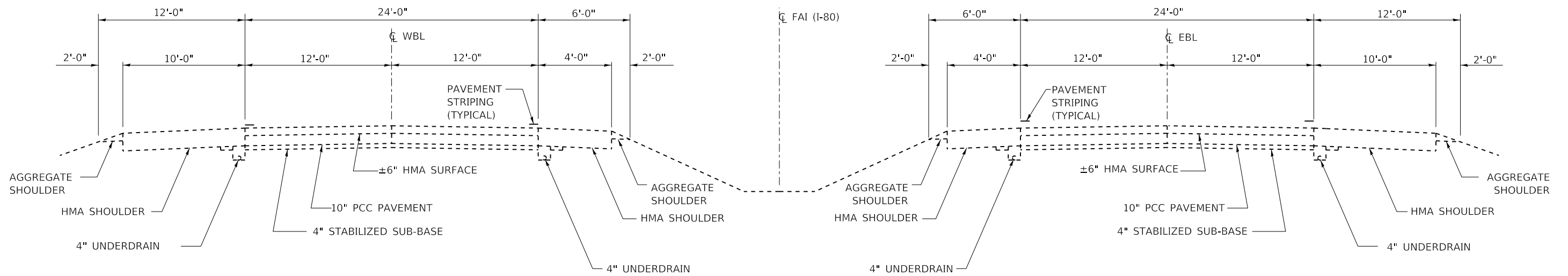
* SPECIALTY ITEMS

a



TYPICAL SECTION NO. 1

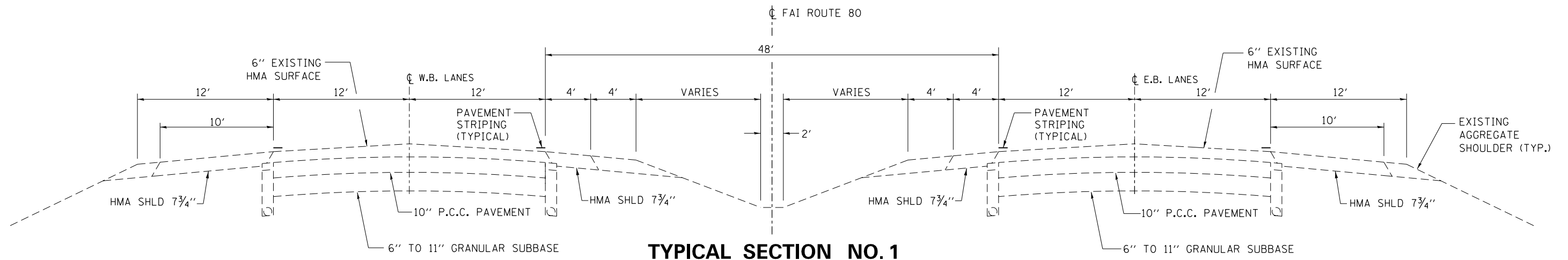
MM 35.96 TO MM 73.00
(BUREAU COUNTY)



TYPICAL SECTION NO. 1

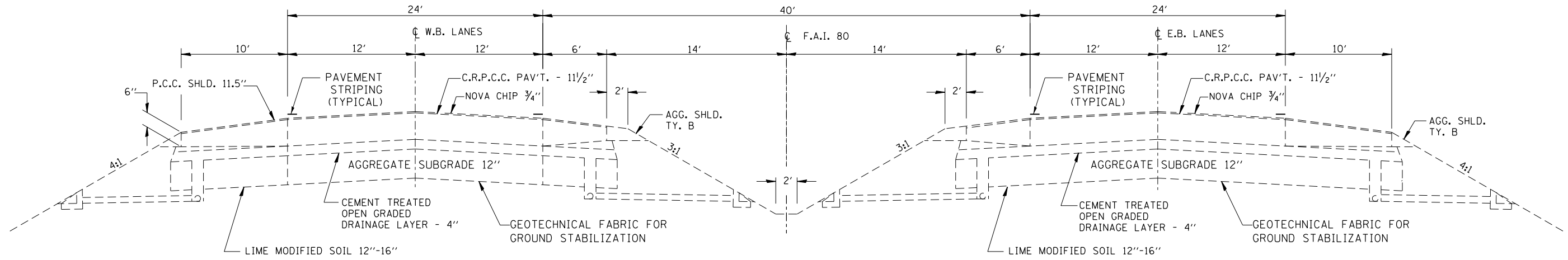
MM 73.00 TO MM 102.99
(LASALLE COUNTY)

FILE NAME =	USER NAME = woodyetjp	DESIGNED -	REVISED -	STATE OF ILLINOIS DEPARTMENT OF TRANSPORTATION	TYPICAL SECTIONS			F.A.I. RTE.	SECTION	COUNTY	TOTAL SHEETS	SHEET NO.
pw:\IL084EBIDINTEG\ilnotes.gov\PWIDOT\Documents\DOT Offices\District 3\Projects\D366J29\CADData\66J29-details.dgn	DRAWN -	REVISIED -	REVISED -					80	D3 I-80 PP 2019-1	*	18	5
Default	PLOT SCALE = 100.0000' / in.	CHECKED -	REVISED -		*BUREAU, LASALLE & GRUNDY			CONTRACT NO. 66J29				
	PLOT DATE = 3/24/2018	DATE -	REVISED -		SCALE:	SHEET 1 OF 2 SHEETS	STA. TO STA.	ILLINOIS FED. AID PROJECT				



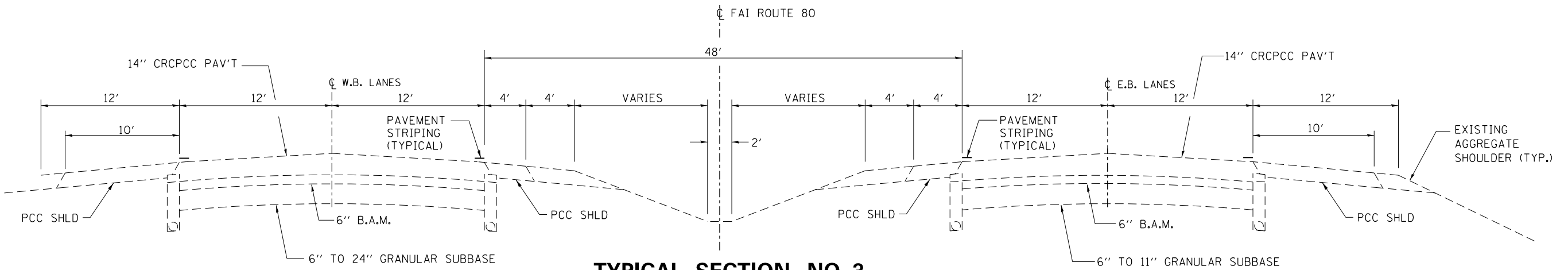
TYPICAL SECTION NO. 1

M.M. 102.99 TO M.M. 105.40
(GRUNDY COUNTY)



TYPICAL SECTION NO. 2

M.M. 105.40 TO M.M. 111.71
(GRUNDY COUNTY)



TYPICAL SECTION NO. 3

M.M. 111.71 TO M.M. 122.75
(GRUNDY COUNTY)

FILE NAME =	USER NAME = woodyetjp	DESIGNED -	REVISED -
pw:\IL084EBID\INTEG\ilnotes.gov\PWIDOT\Documents\DOT Offices\District 3\Projects\D366J29\CADData\66J29-details.dgn		DRAWN -	REVISED -
Default	PLOT SCALE = 100.0000' / in.	CHECKED -	REVISED -
	PLOT DATE = 3/24/2018	DATE -	REVISED -

STATE OF ILLINOIS
DEPARTMENT OF TRANSPORTATION

TYPICAL SECTIONS

SCALE: SHEET 2 OF 2 SHEETS STA. TO STA.

F.A.I. RTE.	SECTION	COUNTY	TOTAL SHEETS	SHEET NO.
80	D3 L-80 PP 2019-1	*	18	6
*BUREAU, LASALLE & GRUNDY			CONTRACT NO. 66J29	
ILLINOIS FED. AID PROJECT				

**SCHEDULE - PATCHING
EASTBOUND LANES-RURAL**

LOCATION	PASSING LANE								DRIVING LANE							
	PATCH LENGTH	CLASS B PATCHING			DOWEL BARS 1 1/2"	SAW CUTS	WELDED WIRE REINF.	TIE BARS 3/4"	PATCH LENGTH	CLASS B PATCHING			DOWEL BARS 1 1/2"	SAW CUTS	WELDED WIRE REINF.	TIE BARS 3/4"
		TYPE II 16"	TYPE III 16"	TYPE IV 16"						TYPE II 16"	TYPE III 16"	TYPE IV 16"				
MILE MARKER	(FT)	SQ YD	SQ YD	SQ YD	EACH	FOOT	SQ YD	EACH	(FT)	SQ YD	SQ YD	SQ YD	EACH	FOOT	SQ YD	EACH
40.66									6	8			20	48		
40.96	6	8			20	48			6	8			20	48		
43.76									35		23		8	106	23	17
44.66									6	8			20	48		
45.36									50				8	136	33	25
45.76	6	8			20	48			6	8			20	48		
55.66									6	8			20	48		
59.36									10	13			20	56		
59.96	6	8			20	48			6	8			20	48		
62.06									6	8			20	48		
TOTALS		24			60	144			69	23	33		176	634	56	42

**SCHEDULE - PATCHING
EASTBOUND LANES-URBAN**

LOCATION	PASSING LANE								DRIVING LANE							
	PATCH LENGTH	CLASS B PATCHING			DOWEL BARS 1 1/2"	SAW CUTS	WELDED WIRE REINF.	TIE BARS 3/4"	PATCH LENGTH	CLASS B PATCHING			DOWEL BARS 1 1/2"	SAW CUTS	WELDED WIRE REINF.	TIE BARS 3/4"
		TYPE II 16"	TYPE III 16"	TYPE IV 16"						TYPE II 16"	TYPE III 16"	TYPE IV 16"				
MILE MARKER	(FT)	SQ YD	SQ YD	SQ YD	EACH	FOOT	SQ YD	EACH	(FT)	SQ YD	SQ YD	SQ YD	EACH	FOOT	SQ YD	EACH
69.46	6	8			20	48			6	8			20	48		
70.06									6	8			20	48		
71.36									10	13			20	56		
TOTALS		8			20	48			29				60	152		

**SCHEDULE - PATCHING
WESTBOUND LANES-URBAN**

LOCATION	PASSING LANE								DRIVING LANE							
	PATCH LENGTH	CLASS B PATCHING			DOWEL BARS 1 1/2"	SAW CUTS	WELDED WIRE REINF.	TIE BARS 3/4"	PATCH LENGTH	CLASS B PATCHING			DOWEL BARS 1 1/2"	SAW CUTS	WELDED WIRE REINF.	TIE BARS 3/4"
		TYPE II 16"	TYPE III 16"	TYPE IV 16"						TYPE II 16"	TYPE III 16"	TYPE IV 16"				
MILE MARKER	(FT)	SQ YD	SQ YD	SQ YD	EACH	FOOT	SQ YD	EACH	(FT)	SQ YD	SQ YD	SQ YD	EACH	FOOT	SQ YD	EACH
70.10									6	8			20	48		
69.00									15		20		20	66	20	
53.90									10	13			20	56		
53.20									6	8			20	48		
45.60									6	8			20	48		
45.10	6	8			20	48			6	8			20	48		
44.80									30		20		8	96	20	15
43.80									10	13			20	56		
42.80	6	8			20	48			6	8			20	48		
41.20									10	13			20	56		
39.30									6	8			20	48		
38.00									6	8			20	48		
38.00									6	8			20	48		
36.70	6	8			20	48			6	8			20	48		
TOTALS		24			60	144			111	40	40		268	762	40	15

**SCHEDULE - PATCHING
WESTBOUND LANES-RURAL**

LOCATION	PASSING LANE								DRIVING LANE							
	PATCH LENGTH	CLASS B PATCHING			DOWEL BARS 1 1/2"	SAW CUTS	WELDED WIRE REINF.	TIE BARS 3/4"	PATCH LENGTH	CLASS B PATCHING			DOWEL BARS 1 1/2"	SAW CUTS	WELDED WIRE REINF.	TIE BARS 3/4"
		TYPE II 16"	TYPE III 16"	TYPE IV 16"						TYPE II 16"	TYPE III 16"	TYPE IV 16"				
MILE MARKER	(FT)	SQ YD	SQ YD	SQ YD	EACH	FOOT	SQ YD	EACH	(FT)	SQ YD	SQ YD	SQ YD	EACH	FOOT	SQ YD	EACH
68.90									10	13			20	56		
66.80									10	13			20	56		
66.70									20	13			8	76		10
62.30									15		20		20	66	20	
TOTALS									39	20	20		68	254	20	10

**SCHEDULE - PAVEMENT MARKING
EASTBOUND LANES - RURAL**

LOCATION	POLYUREA PAVEMENT MARKING TYPE I LINE 4"		POLYUREA PAVEMENT MARKING TYPE I LINE 6"
	FEET		FEET
	YELLOW	WHITE	WHITE
MILE POST			
40.66		6	10
40.96	6	6	10
43.76		35	20
44.66		6	10
45.36		50	20
45.76	6	6	10
55.66		6	20
59.36		10	10
59.96	6	6	10
62.06		6	10
SUBTOTAL	18	137	
TOTAL		155	130

**SCHEDULE - PAVEMENT MARKING
EASTBOUND LANES - URBAN**

LOCATION	POLYUREA PAVEMENT MARKING TYPE I LINE 4"		POLYUREA PAVEMENT MARKING TYPE I LINE 6"
	FEET		FEET
	YELLOW	WHITE	WHITE
MILE POST			
69.46	6	6	10
70.06		6	10
71.36		10	10
SUBTOTAL		22	
TOTAL		22	30

**SCHEDULE - PAVEMENT MARKING
WESTBOUND LANES - URBAN**

LOCATION	POLYUREA PAVEMENT MARKING TYPE I LINE 4"		POLYUREA PAVEMENT MARKING TYPE I LINE 6"
	FEET		FEET
	YELLOW	WHITE	WHITE
MILE POST			
70.10		6	10
69.00		15	10
53.90		10	20
53.20		6	10
45.60		6	20
45.10	6	6	10
44.80		30	20
43.80		10	10
42.80	6	6	10
41.20		10	10
39.30		6	10
38.00		6	10
38.00		6	10
36.70	6	6	10
SUBTOTAL	18	129	
TOTAL		147	170

**SCHEDULE - PAVEMENT MARKING
WESTBOUND LANES - RURAL**

LOCATION	POLYUREA PAVEMENT MARKING TYPE I LINE 4"		POLYUREA PAVEMENT MARKING TYPE I LINE 6"
	FEET		FEET
	YELLOW	WHITE	WHITE
MILE POST			
68.90		10	10
66.80		10	10
66.70		20	10
62.30		15	10
SUBTOTAL		55	
TOTAL		55	40

**SCHEDULE - PATCHING
EASTBOUND LANES - URBAN**

LOCATION	PASSING LANE								DRIVING LANE							
	PATCH LENGTH	CLASS B PATCHING			DOWEL BARS 1 1/2"	SAW CUTS	WELDED WIRE REINF.	TIE BARS 3/4"	PATCH LENGTH	CLASS B PATCHING			DOWEL BARS 1 1/2"	SAW CUTS	WELDED WIRE REINF.	TIE BARS 3/4"
		TYPE II 16"	TYPE III 16"	TYPE IV 16"						TYPE II 16"	TYPE III 16"	TYPE IV 16"				
MILE MARKER	(FT)	SQ YD	SQ YD	SQ YD	EACH	FOOT	SQ YD	EACH	(FT)	SQ YD	SQ YD	SQ YD	EACH	FOOT	SQ YD	EACH
73.60									6	8			20	48		
73.70									6	8			20	48		
74.10									6	8			20	48		
79.20									6	8			20	48		
79.30									6	8			20	48		
79.80									6	8			20	48		
79.90									6	8			20	48		
TOTALS										56			140	336		

**SCHEDULE - PATCHING
EASTBOUND LANES - RURAL**

LOCATION	PASSING LANE								DRIVING LANE							
	PATCH LENGTH	CLASS B PATCHING			DOWEL BARS 1 1/2"	SAW CUTS	WELDED WIRE REINF.	TIE BARS 3/4"	PATCH LENGTH	CLASS B PATCHING			DOWEL BARS 1 1/2"	SAW CUTS	WELDED WIRE REINF.	TIE BARS 3/4"
		TYPE II 16"	TYPE III 16"	TYPE IV 16"						TYPE II 16"	TYPE III 16"	TYPE IV 16"				
MILE MARKER	(FT)	SQ YD	SQ YD	SQ YD	EACH	FOOT	SQ YD	EACH	(FT)	SQ YD	SQ YD	SQ YD	EACH	FOOT	SQ YD	EACH
94.20	6	8			20	48			6	8			20	48		
94.90									6	8			20	48		
95.90	6	8			20	48										
97.40	6	8			20	48										
97.80	6	8			20	48										
97.90	6	8			20	48										
100.70									10	13			20	56		
100.90									6	8			20	48		
TOTALS		40			100	240				37			80	200		

**SCHEDULE - PATCHING
WESTBOUND LANES - RURAL**

LOCATION	PASSING LANE								DRIVING LANE							
	PATCH LENGTH	CLASS B PATCHING			DOWEL BARS 1 1/2"	SAW CUTS	WELDED WIRE REINF.	TIE BARS 3/4"	PATCH LENGTH	CLASS B PATCHING			DOWEL BARS 1 1/2"	SAW CUTS	WELDED WIRE REINF.	TIE BARS 3/4"
		TYPE II 16"	TYPE III 16"	TYPE IV 16"						TYPE II 16"	TYPE III 16"	TYPE IV 16"				
MILE MARKER	(FT)	SQ YD	SQ YD	SQ YD	EACH	FOOT	SQ YD	EACH	(FT)	SQ YD	SQ YD	SQ YD	EACH	FOOT	SQ YD	EACH
96.79									6	8			20	48		
83.29									6	8			20	48		
TOTALS										16			40	96		

**SCHEDULE - PATCHING
WESTBOUND LANES - URBAN**

LOCATION	PASSING LANE								DRIVING LANE							
	PATCH LENGTH	CLASS B PATCHING			DOWEL BARS 1 1/2"	SAW CUTS	WELDED WIRE REINF.	TIE BARS 3/4"	PATCH LENGTH	CLASS B PATCHING			DOWEL BARS 1 1/2"	SAW CUTS	WELDED WIRE REINF.	TIE BARS 3/4"
		TYPE II 16"	TYPE III 16"	TYPE IV 16"						TYPE II 16"	TYPE III 16"	TYPE IV 16"				
MILE MARKER	(FT)	SQ YD	SQ YD	SQ YD	EACH	FOOT	SQ YD	EACH	(FT)	SQ YD	SQ YD	SQ YD	EACH	FOOT	SQ YD	EACH
78.89									6	8			20	48		
TOTALS										8			20	48		

**SCHEDULE - PAVEMENT MARKING
EASTBOUND LANES - URBAN**

LOCATION MILE POST	POLYUREA PAVEMENT MARKING TYPE I LINE 4" FEET		POLYUREA PAVEMENT MARKING TYPE I LINE 6" FEET
	YELLOW	WHITE	WHITE
	73.60		6
73.70		6	10
74.10		6	10
79.20		6	10
79.30		6	10
79.80		6	10
79.90		6	10
SUBTOTAL		42	
TOTAL	42		70

**SCHEDULE - PAVEMENT MARKING
EASTBOUND LANES - RURAL**

LOCATION MILE POST	POLYUREA PAVEMENT MARKING TYPE I LINE 4" FEET		POLYUREA PAVEMENT MARKING TYPE I LINE 6" FEET
	YELLOW	WHITE	WHITE
	94.20	6	6
94.90		6	10
95.90	6		10
97.40	6		10
97.80	6		10
97.90	6		10
100.70		10	10
100.90		6	10
SUBTOTAL	30	28	
TOTAL	58		80

**SCHEDULE - PAVEMENT MARKING
WESTBOUND LANES - RURAL**

LOCATION MILE POST	POLYUREA PAVEMENT MARKING TYPE I LINE 4" FEET		POLYUREA PAVEMENT MARKING TYPE I LINE 6" FEET
	YELLOW	WHITE	WHITE
	96.79		6
83.29		6	10
SUBTOTAL		12	
TOTAL	12		20

**SCHEDULE - PAVEMENT MARKING
WESTBOUND LANES - URBAN**

LOCATION MILE POST	POLYUREA PAVEMENT MARKING TYPE I LINE 4" FEET		POLYUREA PAVEMENT MARKING TYPE I LINE 6" FEET
	YELLOW	WHITE	WHITE
	78.89	6	6
SUBTOTAL	6	6	
TOTAL	12		10

**SCHEDULE - PATCHING
EASTBOUND LANES - RURAL**

LOCATION	PASSING LANE							DRIVING LANE							
	PATCH LENGTH	CLASS A PATCHING			PATCH REINF.	SAW CUTS	TIE BARS 3/4"	PATCH LENGTH	CLASS A PATCHING			PATCH REINF.	SAW CUTS	TIE BARS 3/4"	
		TYPE II 16"	TYPE III 16"	TYPE IV 16"					TYPE II 16"	TYPE III 16"	TYPE IV 16"				
MILE MARKER	FEET	SQ YD	SQ YD	SQ YD	SQ YD	FOOT	EACH	FEET	SQ YD	SQ YD	SQ YD	SQ YD	FOOT	EACH	
106.99								6	9				9	36	42
107.09								6	9				9	36	42
108.49								10		16			16	44	42
108.54	10	13				13	44	42							
108.59								6	8				8	36	42
108.64	6	8				8	36	42					8	36	42
108.74		0				0	0		6	8			8	36	42
108.79	6	8				8	36	42					8	36	42
108.84								6	8				8	36	42
108.89								6	8				8	36	42
TOTALS		29				29	116	126		50	16		66	260	294

**SCHEDULE - PATCHING
EASTBOUND LANES - URBAN**

LOCATION	PASSING LANE					DRIVING LANE				
	PATCH LENGTH	CLASS A PATCHING	PATCH REINF.	SAW CUTS	TIE BARS 3/4"	PATCH LENGTH	CLASS A PATCHING	PATCH REINF.	SAW CUTS	TIE BARS 3/4"
		TYPE II 14"					TYPE II 14"			
MILE MARKER	FEET	SQ YD	SQ YD	FOOT	EACH	FEET	SQ YD	SQ YD	FOOT	EACH
111.79						10	13	13	44	42
113.19						10	13	13	44	42
TOTALS							26	26	88	84

**SCHEDULE - PATCHING
WESTBOUND LANES - URBAN**

LOCATION	PASSING LANE					DRIVING LANE				
	PATCH LENGTH	CLASS A PATCHING	PATCH REINF.	SAW CUTS	TIE BARS 3/4"	PATCH LENGTH	CLASS A PATCHING	PATCH REINF.	SAW CUTS	TIE BARS 3/4"
		TYPE II 14"					TYPE II 14"			
MILE MARKER	FEET	SQ YD	SQ YD	FOOT	EACH	FEET	SQ YD	SQ YD	FOOT	EACH
122.65						10	13	13	44	42
122.55						6	8	8	288	42
TOTALS							21	21	332	84

**SCHEDULE - PATCHING
WESTBOUND LANES - RURAL**

LOCATION	PASSING LANE							DRIVING LANE							
	PATCH LENGTH	CLASS A PATCHING			PATCH REINF.	SAW CUTS	TIE BARS 3/4"	PATCH LENGTH	CLASS A PATCHING			PATCH REINF.	SAW CUTS	TIE BARS 3/4"	
		TYPE II 16"	TYPE III 16"	TYPE IV 16"					TYPE II 16"	TYPE III 16"	TYPE IV 16"				
MILE MARKER	FEET	SQ YD	SQ YD	SQ YD	SQ YD	FOOT	EACH	FEET	SQ YD	SQ YD	SQ YD	SQ YD	FOOT	EACH	
107.15								20			27		27	64	52
105.95								6	8				8	36	42
105.85								6	8				8	36	42
TOTALS									16		27		43	136	136

**SCHEDULE - PAVEMENT MARKING
EASTBOUND LANES - RURAL**

LOCATION	POLYUREA PAVEMENT MARKING TYPE I LINE 4"		POLYUREA PAVEMENT MARKING TYPE I LINE 6"
	FEET		FEET
	YELLOW	WHITE	WHITE
MILE POST			
106.99		6	10
107.09		6	10
108.49		10	10
108.54	10		10
108.59		6	10
108.64	6		10
108.74		6	10
108.79	6		10
108.84		6	10
108.89		6	10
SUBTOTAL	22	46	
TOTAL	68		100

**SCHEDULE - PAVEMENT MARKING
EASTBOUND LANES - URBAN**

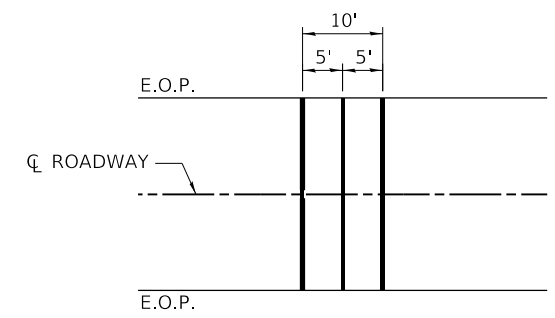
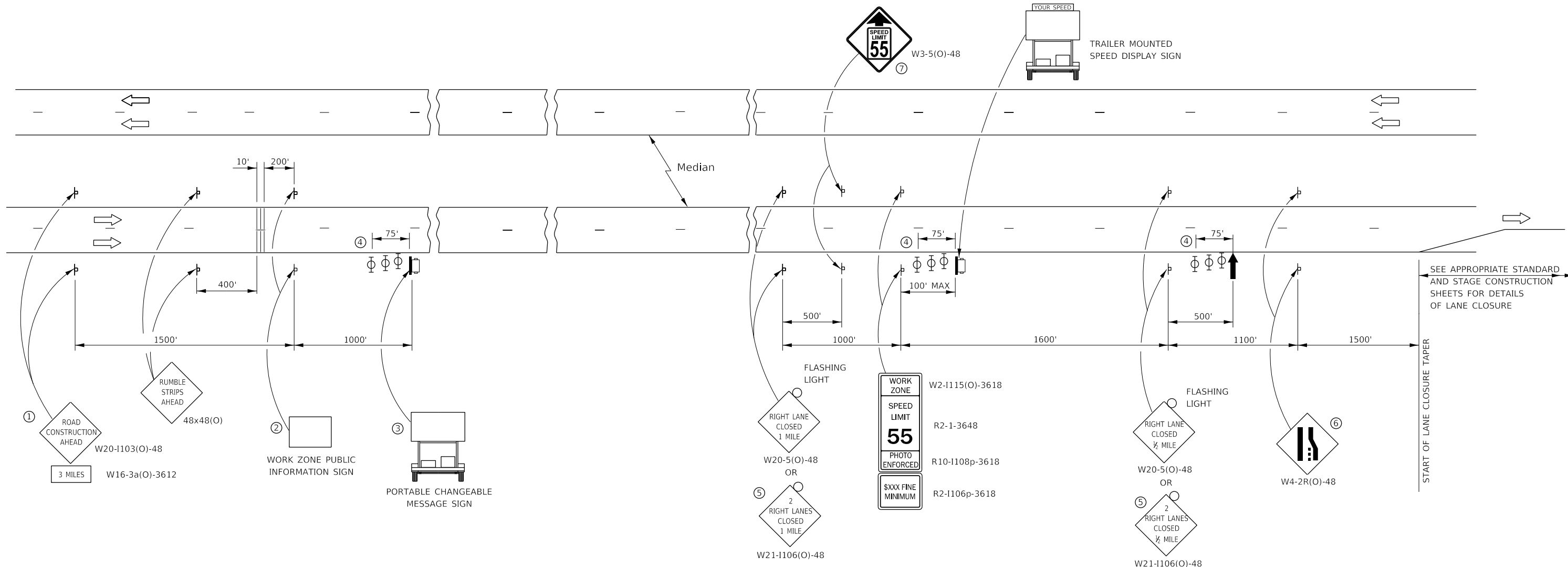
LOCATION	POLYUREA PAVEMENT MARKING TYPE I LINE 4"		POLYUREA PAVEMENT MARKING TYPE I LINE 6"
	FEET		FEET
	YELLOW	WHITE	WHITE
MILE POST			
111.79		10	10
113.19		10	10
SUBTOTAL		20	
TOTAL	20		20

**SCHEDULE - PAVEMENT MARKING
WESTBOUND LANES - URBAN**

LOCATION	POLYUREA PAVEMENT MARKING TYPE I LINE 4"		POLYUREA PAVEMENT MARKING TYPE I LINE 6"
	FEET		FEET
	YELLOW	WHITE	WHITE
MILE POST			
122.65		10	10
122.55		6	10
SUBTOTAL		16	
TOTAL	16		20

**SCHEDULE - PAVEMENT MARKING
WESTBOUND LANES - RURAL**

LOCATION	POLYUREA PAVEMENT MARKING TYPE I LINE 4"		POLYUREA PAVEMENT MARKING TYPE I LINE 6"
	FEET		FEET
	YELLOW	WHITE	WHITE
MILE POST			
107.15		10	10
105.95		6	10
105.85		6	10
SUBTOTAL		22	
TOTAL	22		30



TEMPORARY RUMBLE STRIP

- ① THE ROAD CONSTRUCTION AHEAD SIGN SHALL BE LOCATED 3 MILES IN ADVANCE OF THE PROJECT LIMITS.
- ② THE MESSAGE AND SIZE OF THE WORK ZONE PUBLIC INFORMATION SIGN SHALL BE AS SPECIFIED BY THE DEPARTMENT.
- ③ TO BE PLACED IN THE MEDIAN WHEN FEASIBLE. THE MESSAGE BOARD SHALL BE USED TO DISPLAY STATUS OF LANES WITHIN THE PROJECT. THE PRIMARY MESSAGES SHALL BE:
 "RIGHT LANE CLOSED" / " x MILES AHEAD"
 "LEFT LANE CLOSED" / " x MILES AHEAD"
 "ALL LANES OPEN"
- ④ THREE, TYPE II BARRICADES, DRUMS, OR VERTICAL BARRICADES AT 25' CENTERS.
- ⑤ THIS SIGN SHALL BE USED WHEN 2 LANES ARE CLOSED.
- ⑥ WHEN THE LEFT LANE IS CLOSED, SWITCH THESE TWO SIGNS AND THE DIRECTION OF THE MERGE ARROW.
- ⑦ THIS SIGN SHALL ONLY BE USED IF THE EXISTING SPEED LIMIT IS GREATER THAN 65 MPH.

- ↑ ARROW BOARD
- ☐ PORTABLE CHANGEABLE MESSAGE SIGN
- ⊥ SIGN
- ⊙ TYPE II BARRICADE, DRUM, OR VERTICAL BARRICADE WITH MONODIRECTIONAL FLASHING LIGHT
- ▬ TEMPORARY RUMBLE STRIPS (SEE SPECIAL PROVISION)

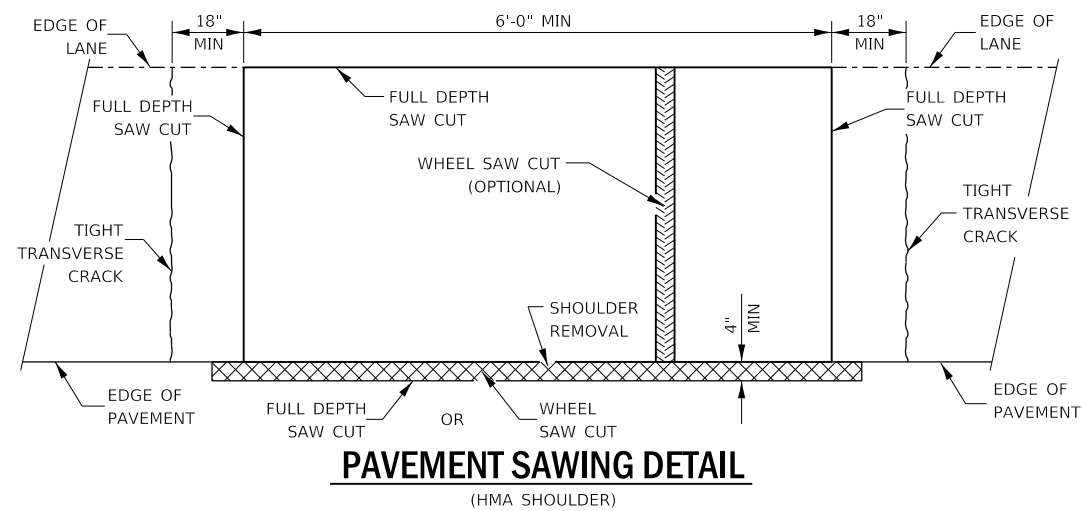
GENERAL NOTE:

THIS STANDARD IS USED WHERE AT ANY TIME A LANE IS CLOSED ON A FREEWAY/EXPRESSWAY.

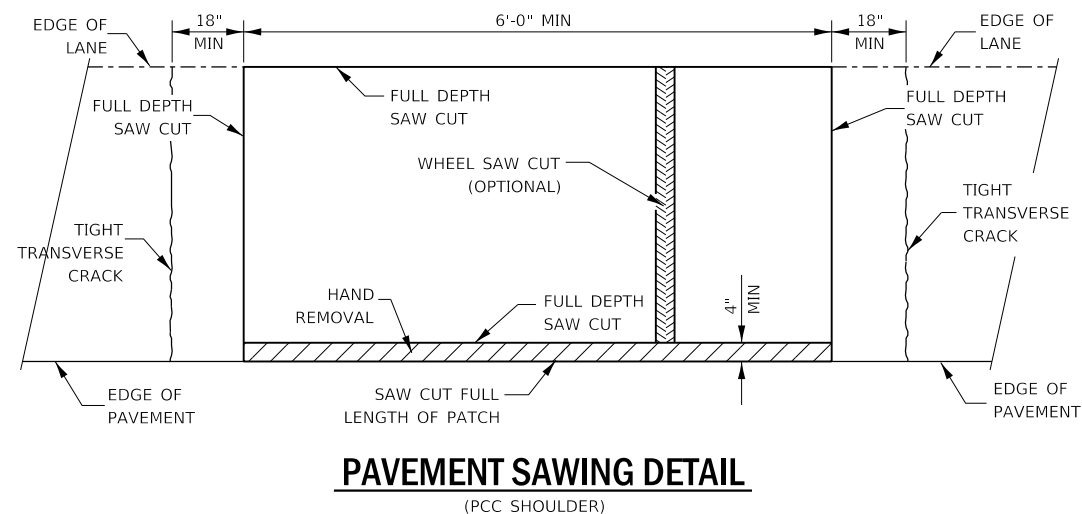
WHEN THE LEFT LANE IS CLOSED, LEFT LANE CLOSED SIGNS SHALL BE SUBSTITUTED FOR THE RIGHT LANE CLOSED SIGNS.

THE FIRST THREE SIGNS AND THE MESSAGE BOARD ARE STATIONARY. THE OTHER SIGNS AND ARROWBOARDS SHALL BE MOVED AS NECESSARY TO MAINTAIN THE REQUIRED DISTANCE FROM THE START OF THE LANE CLOSURE TAPER(S).

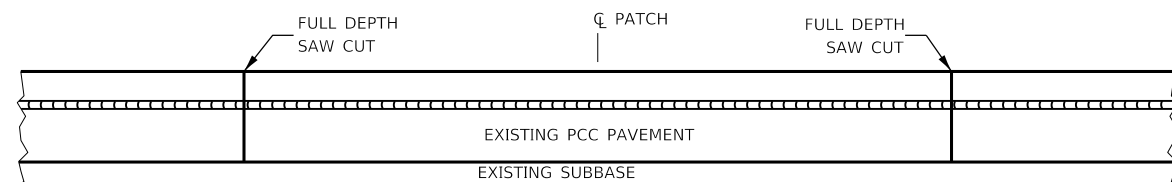
SEE SPECIAL PROVISIONS.



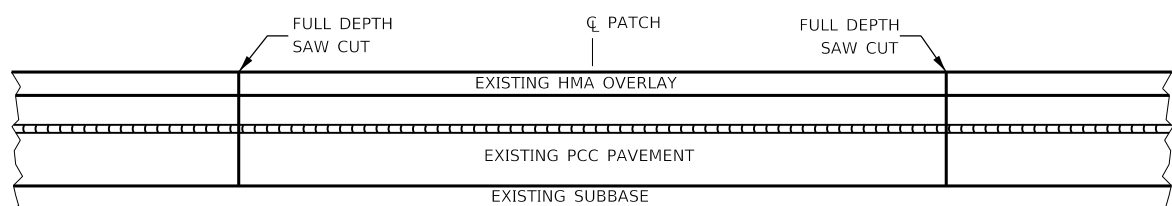
PAVEMENT SAWING DETAIL
(HMA SHOULDER)



PAVEMENT SAWING DETAIL
(PCC SHOULDER)

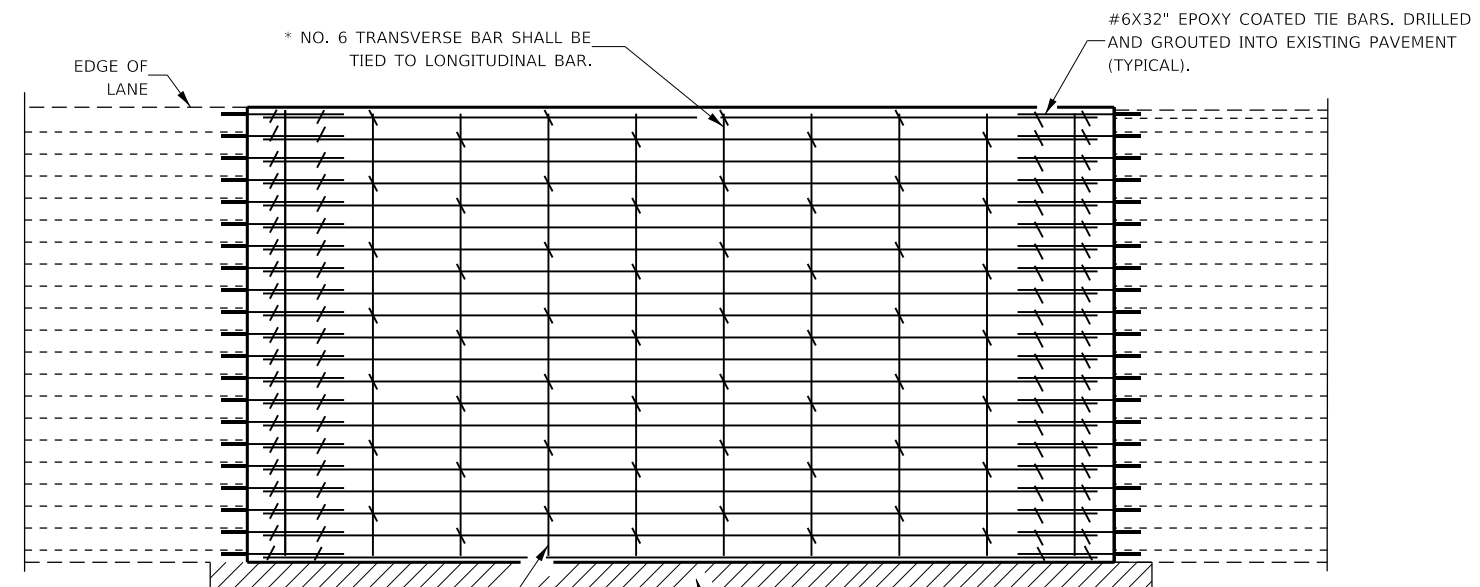


EXISTING PAVEMENT WITHOUT HMA SURFACE



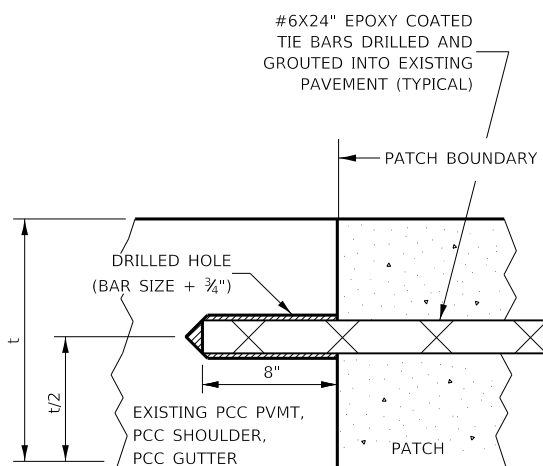
EXISTING PAVEMENT WITH HMA SURFACE

PAVEMENT SAWING DETAIL FOR CLASS A PATCHING
(CRC PAVEMENT)



PAVEMENT REINFORCEMENT DETAIL

TRANSVERSE REBAR SHALL EXTEND TO OUTER LONGITUDINAL REBAR WHILE PROVIDING A MINIMUM 3" CLEARANCE FROM EXISTING PAVEMENT EDGE



LONGITUDINAL CONSTRUCTION JOINT

PATCHES MORE THAN 20' IN LENGTH SHALL BE TIED TO ADJACENT PAVEMENT, PCC SHOULDERS OR PCC CURB AND GUTTER WITH #6X24" EPOXY COATED TIE BARS AT 36" CENTERS.

NOTES:

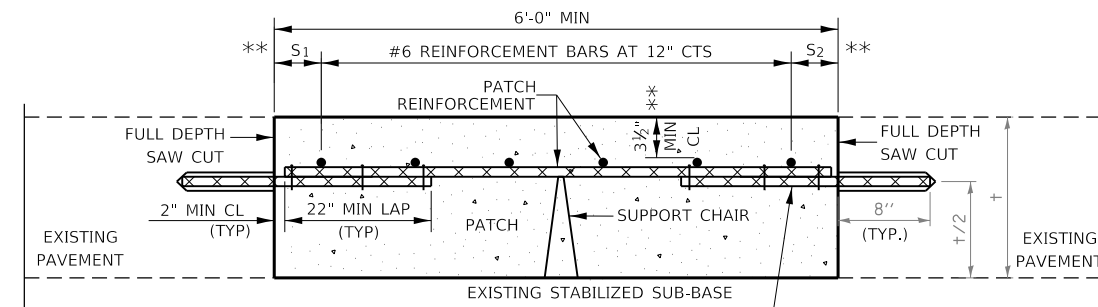
EXISTING LONGITUDINAL REINFORCEMENT SPACING FROM M.M. 105.40 TO M.M. 111.71; #6 BARS AT 5 3/4".

EXISTING LONGITUDINAL REINFORCEMENT SPACING FROM M.M. 111.71 TO M.M. 122.75; #7 BARS AT 6".

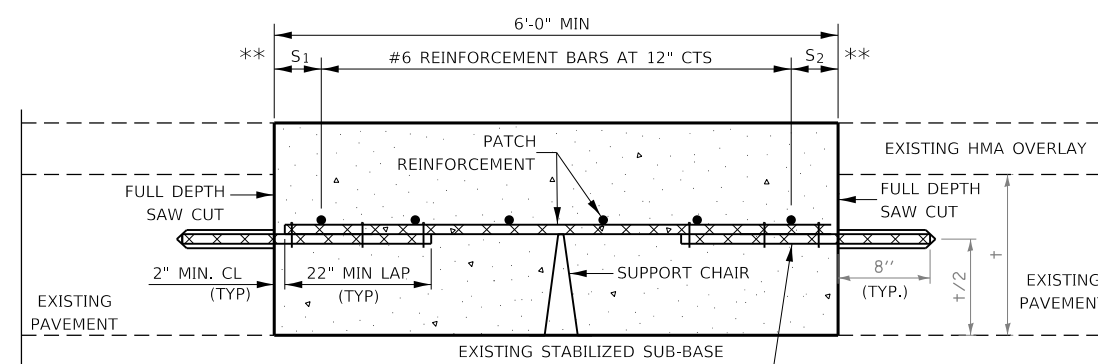
SPACING OF NEW LONGITUDINAL REINFORCEMENT AND NEW LONGITUDINAL TIE BARS SHALL MATCH SPACING OF EXISTING REINFORCEMENT AND SHALL BE TIED TOGETHER WITH A MINIMUM OF TWO TIES PER BAR.

* EVERY THIRD INTERSECTION MUST BE TIED. WHEN THE MINIMUM CLEARANCE CANNOT BE OBTAINED WITH THE TRANSVERSE REBAR ON TOP, THEN THE TRANSVERSE REBAR SHALL BE TIED TO THE BOTTOM OF THE LONGITUDINAL REBAR.

** VARIABLES WHERE S₁ AND S₂ ARE 2 1/2" MIN. AND 12" MAX.



WITHOUT HMA OVERLAY



WITH HMA OVERLAY

PATCHING DETAIL FOR CLASS A PATCHING
(CRC PAVEMENT)

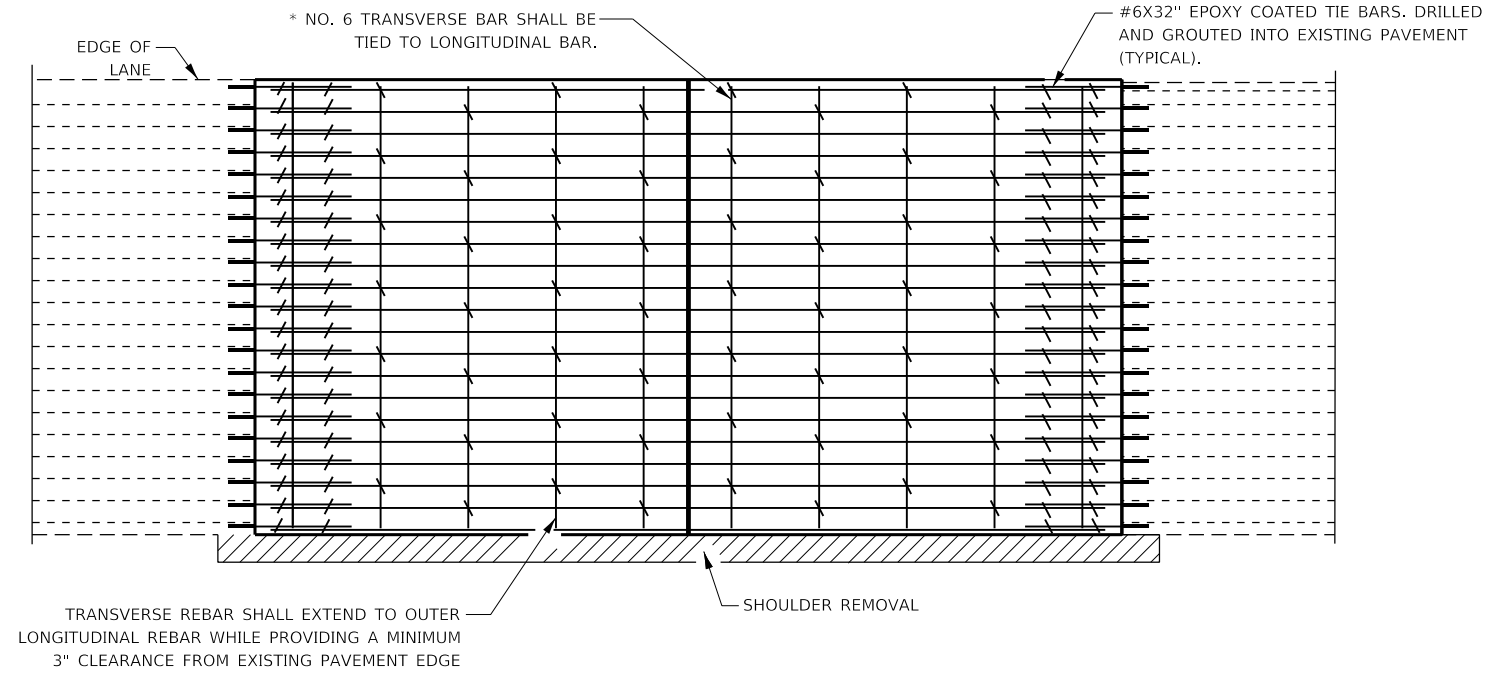
FILE NAME =	USER NAME = woodyetjp	DESIGNED -	REVISED -
pw:\IL084EBID\INTEG\ifnotes.gov\PWIDOT\Documents\DOT\Offices\District 3\Projects\D366\29\CADData\66J29-details.dgn		DRAWN -	REVISED -
Default	PLOT SCALE = 100.0000' / in.	CHECKED -	REVISED -
	PLOT DATE = 3/24/2018	DATE -	REVISED -

STATE OF ILLINOIS
DEPARTMENT OF TRANSPORTATION

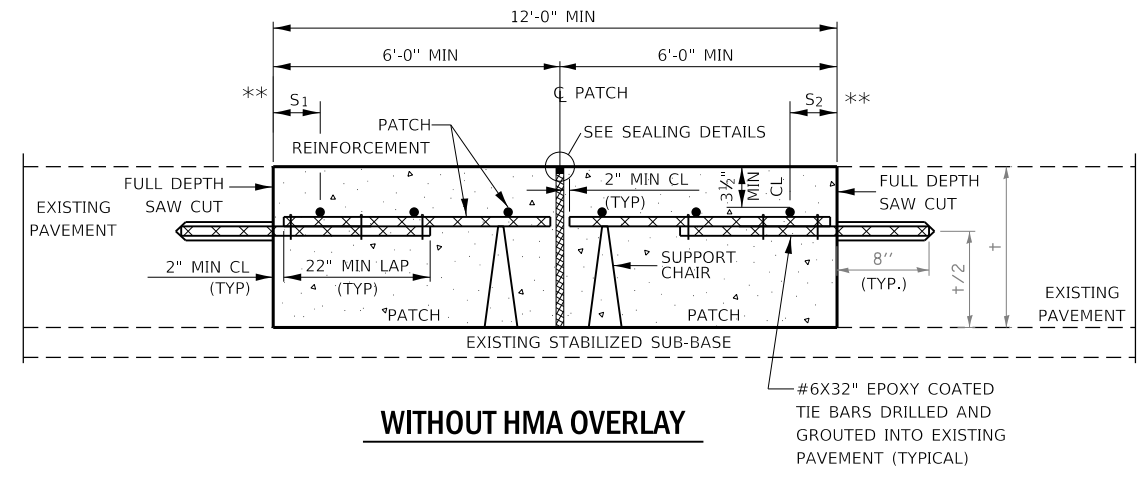
CLASS A PATCHING DETAILS

SCALE: SHEET 1 OF 2 SHEETS STA. TO STA.

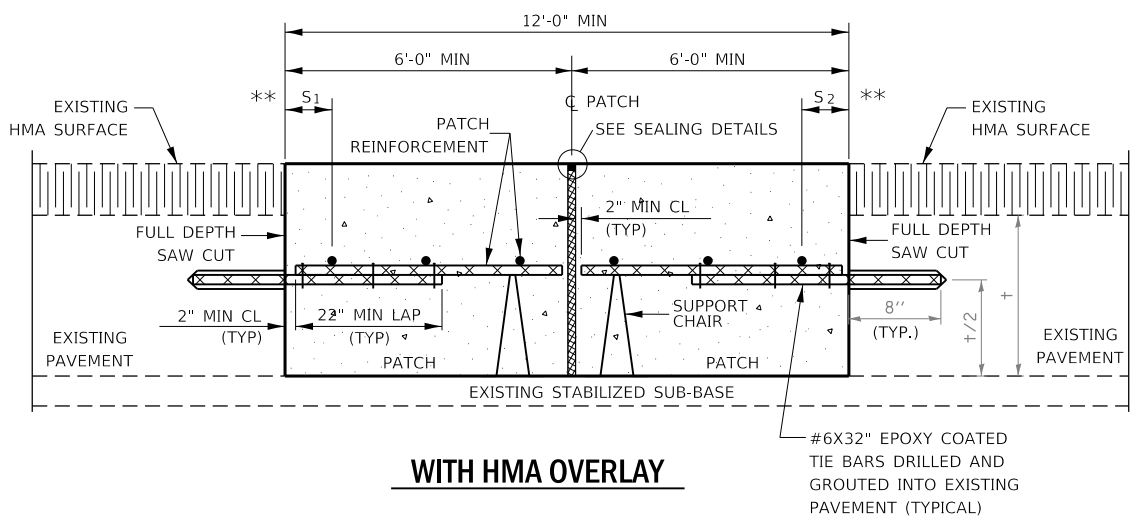
F.A.I. RTE.	SECTION	COUNTY	TOTAL SHEETS	SHEET NO.
80	D3 L80 PP 2019-1	*	18	14
*BUREAU, LASALLE & GRUNDY		CONTRACT NO. 66J29		
ILLINOIS FED. AID PROJECT				



PAVEMENT REINFORCEMENT DETAIL

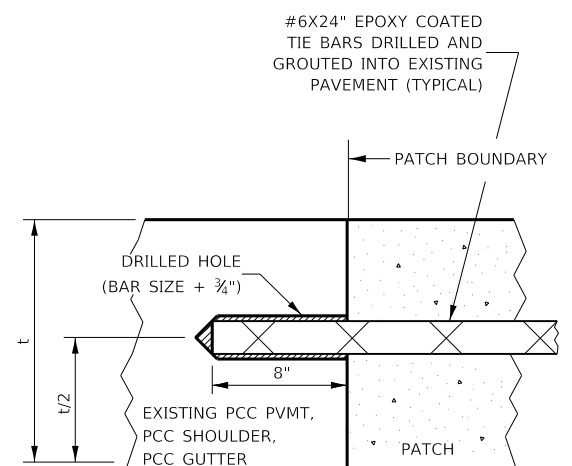


WITHOUT HMA OVERLAY



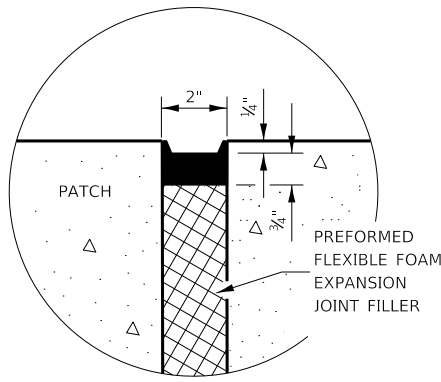
WITH HMA OVERLAY

CLASS A PATCH WITH EXPANSION JOINT

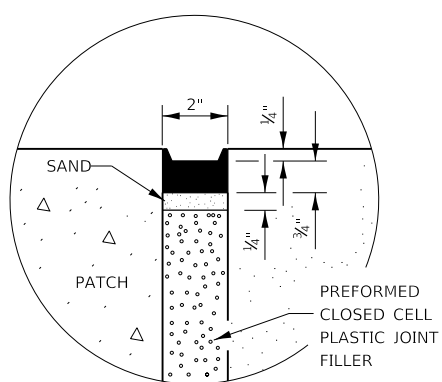


LONGITUDINAL CONSTRUCTION JOINT

PATCHES MORE THAN 20' IN LENGTH SHALL BE TIED TO ADJACENT PAVEMENT, PCC SHOULDERS OR PCC CURB AND GUTTER WITH #6x24" EPOXY COATED TIE BARS AT 36" CENTERS.



SEALING DETAIL



SEALING DETAIL

NOTES:

- EXISTING LONGITUDINAL REINFORCEMENT SPACING FROM M.M. 105.40 TO M.M. 111.71; #6 BARS AT 5 3/4".
- EXISTING LONGITUDINAL REINFORCEMENT SPACING FROM M.M. 111.71 TO M.M. 122.75; #7 BARS AT 6".

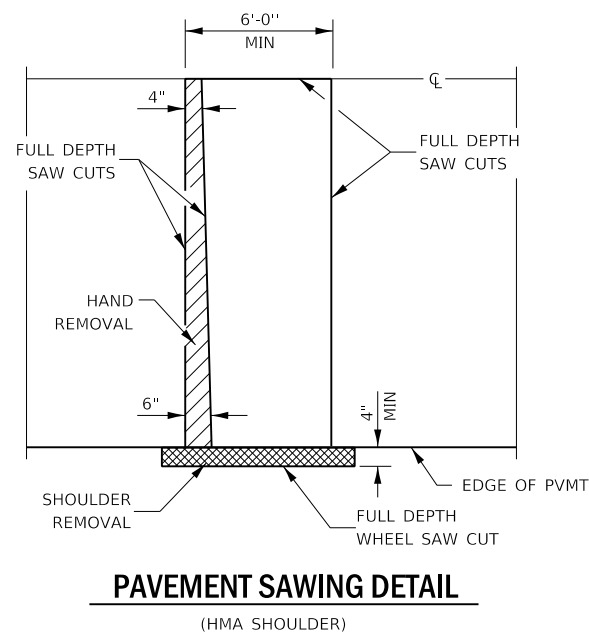
SPACING OF NEW LONGITUDINAL REINFORCEMENT AND NEW LONGITUDINAL TIE BARS SHALL MATCH SPACING OF EXISTING REINFORCEMENT AND SHALL BE TIED TOGETHER WITH A MINIMUM OF TWO TIES PER BAR.

SUPPORT CHAIRS SHALL BE REQUIRED WHENEVER PATCH LENGTH EXCEEDS 6'-0"

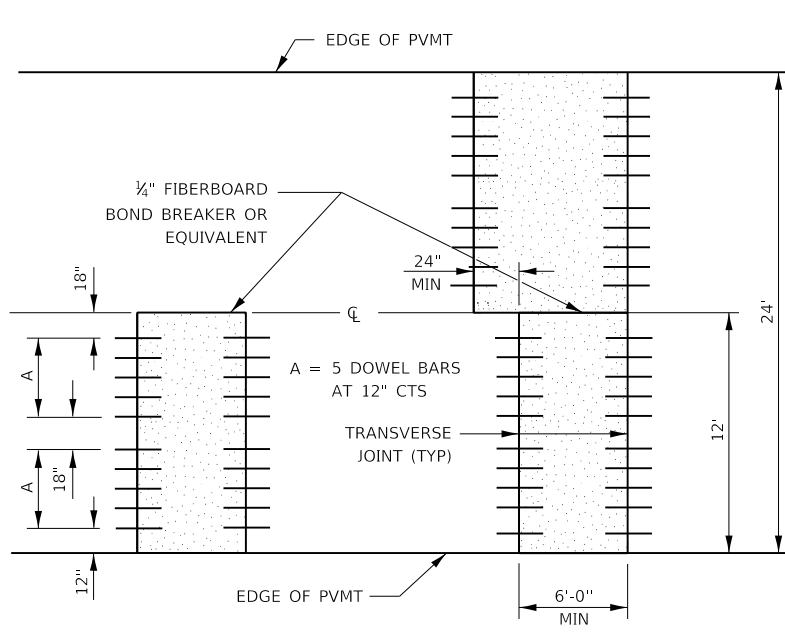
* EVERY THIRD INTERSECTION MUST BE TIED. WHEN THE MINIMUM CLEARANCE CANNOT BE OBTAINED WITH THE TRANSVERSE REBAR ON TOP, THEN THE TRANSVERSE REBAR SHALL BE TIED TO THE BOTTOM OF THE LONGITUDINAL REBAR.

** VARIABLES WHERE S₁ AND S₂ ARE 2 1/2" MIN. AND 12" MAX.

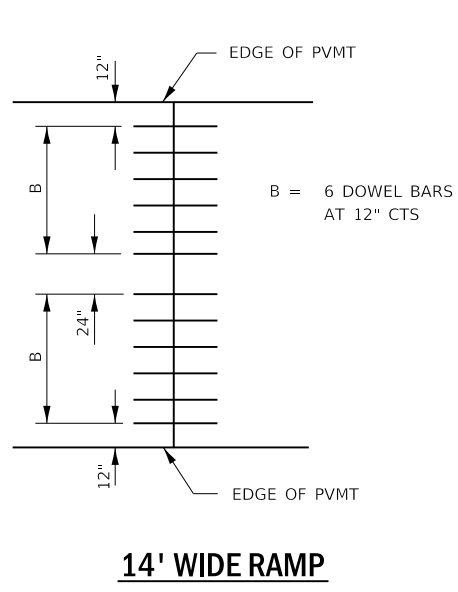
FILE NAME =	USER NAME = woodyetjp	DESIGNED -	REVISED -	STATE OF ILLINOIS DEPARTMENT OF TRANSPORTATION	CLASS A PATCHING DETAILS			F.A.I. RTE.	SECTION	COUNTY	TOTAL SHEETS	SHEET NO.
pw:\IL084EBIDINTEG\ifnotes.gov\PWIDOT\Documents\DOT Offices\District 3\Projects\D366J29\CADDData\66J29-details.dgn		DRAWN -	REVISED -		80	D3 I-80 PP 2019-1	*	18	15			
Default	PLOT SCALE = 100.0000' / in.	CHECKED -	REVISED -		SCALE: SHEET 2 OF 2 SHEETS STA. TO STA.			*BUREAU, LASALLE & GRUNDY CONTRACT NO. 66J29				
	PLOT DATE = 3/24/2018	DATE -	REVISED -		ILLINOIS		FED. AID PROJECT					



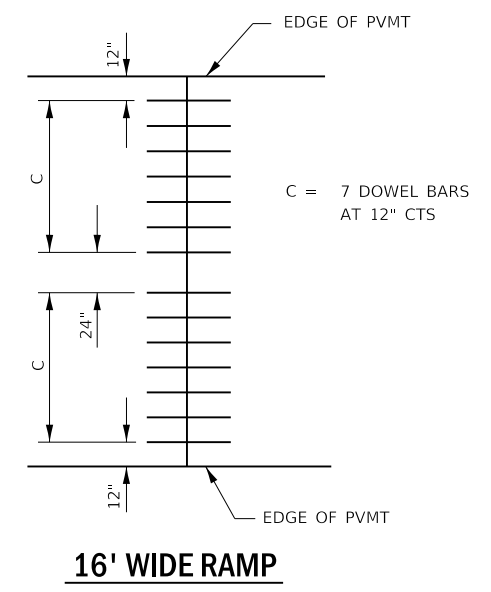
PAVEMENT SAWING DETAIL
(HMA SHOULDER)



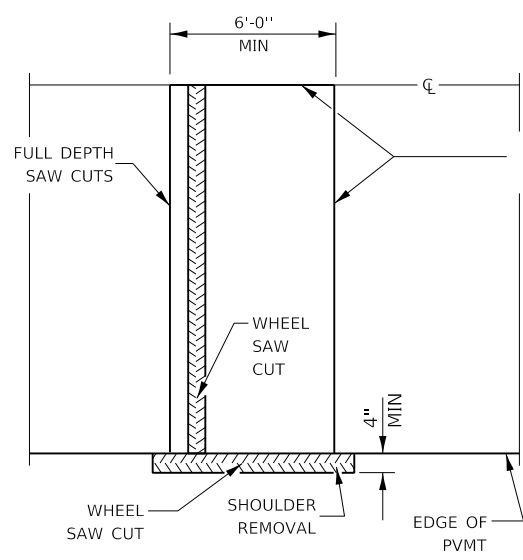
12' WIDE LANES



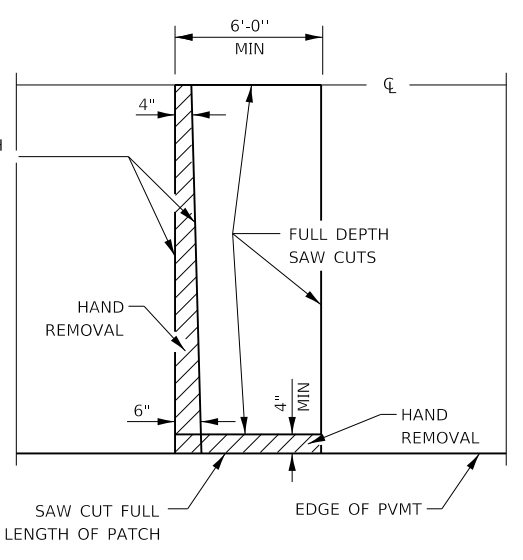
14' WIDE RAMP



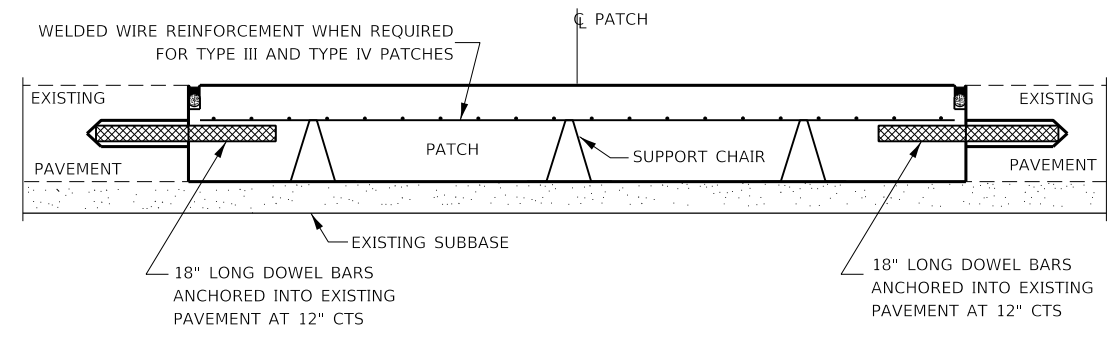
16' WIDE RAMP



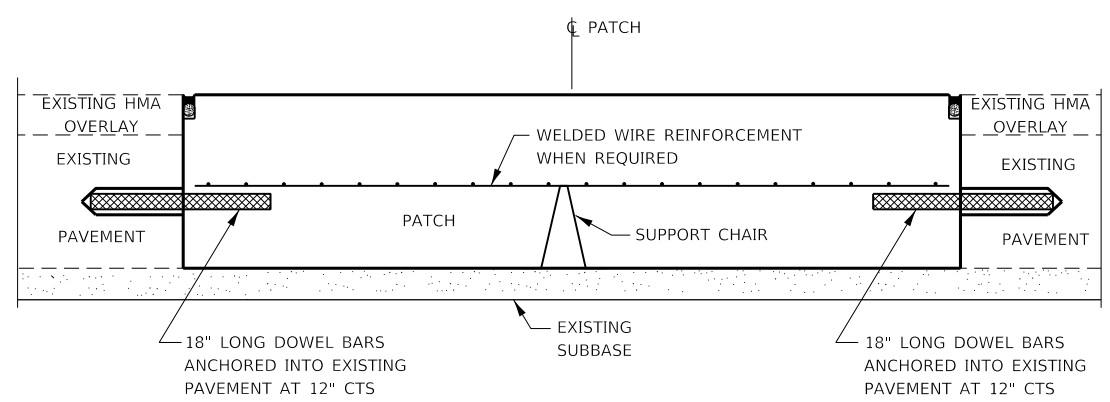
ALTERNATE SAWING DETAIL
(HMA SHOULDER)



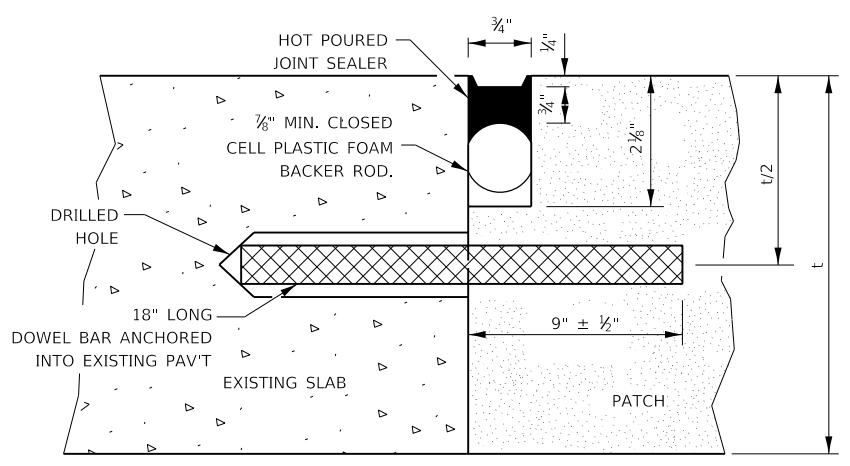
PAVEMENT SAWING DETAIL
(PCC SHOULDER)



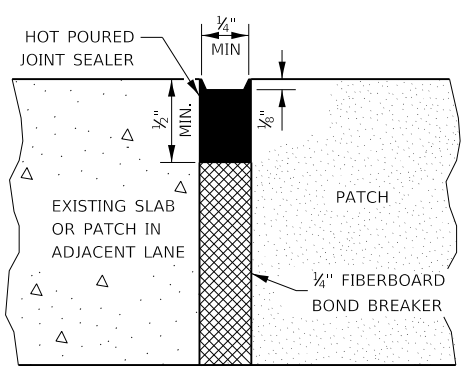
PATCHING WITHOUT HMA OVERLAY



PATCHING WITH HMA OVERLAY



TRANSVERSE JOINT

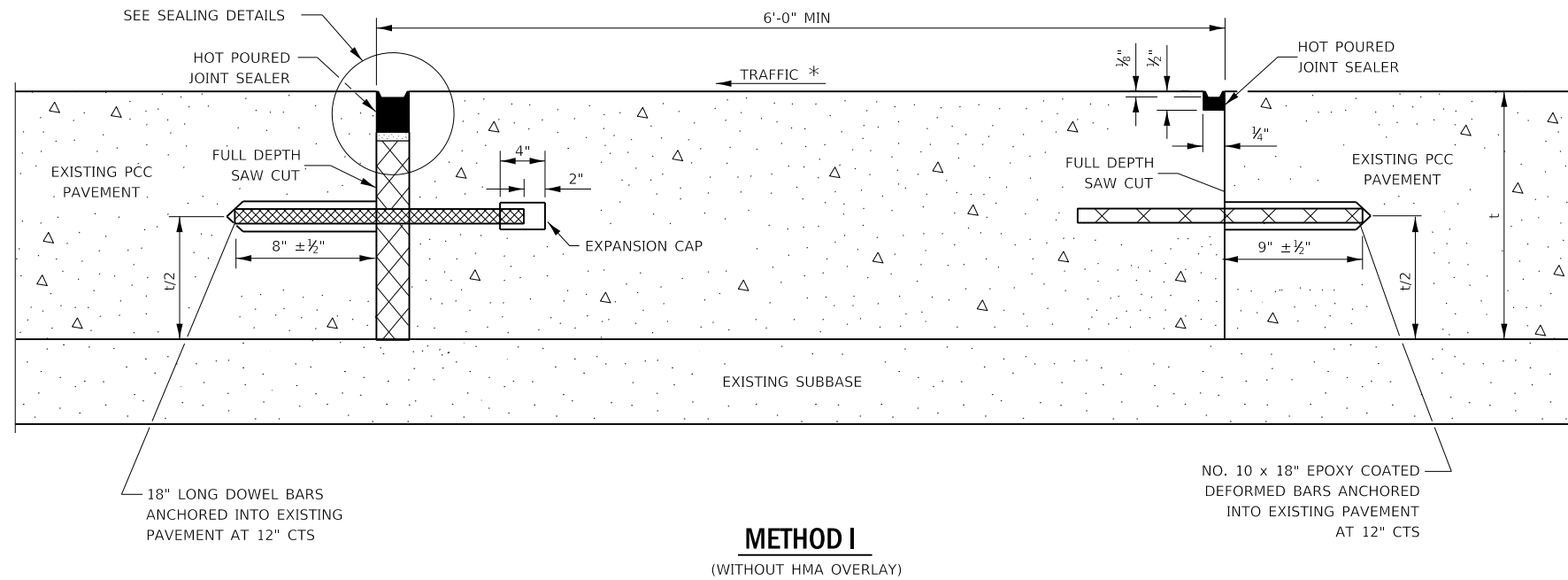


CENTERLINE JOINT

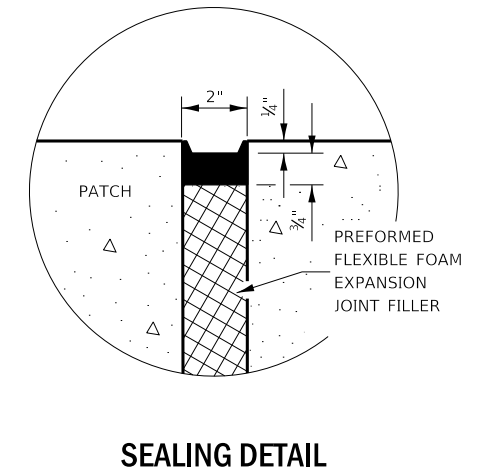
DOWEL BAR TABLE		
PAVEMENT THICKNESS	DOWEL BAR DIAMETER	HOLE DIAMETER
8" OR GREATER	1 1/2"	1 3/8"
7" THRU 7.99"	1 1/4"	1 3/8"
LESS THAN 7"	1"	1 1/8"

GENERAL NOTES

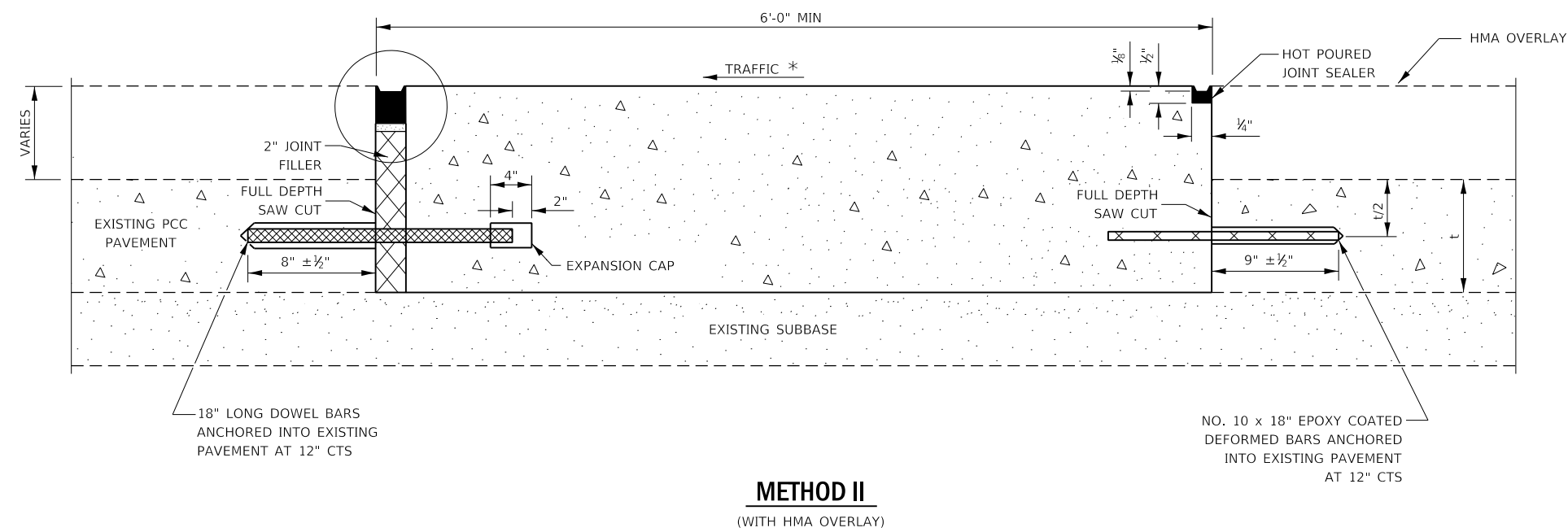
THE TRANSVERSE JOINTS FOR CLASS B PATCHES SHALL ALIGN WITH JOINTS OR CRACKS IN THE ADJACENT LANE WHENEVER POSSIBLE.
SEE STANDARD 420701 FOR DETAILS OF PAVEMENT WELDED WIRE REINFORCEMENT.



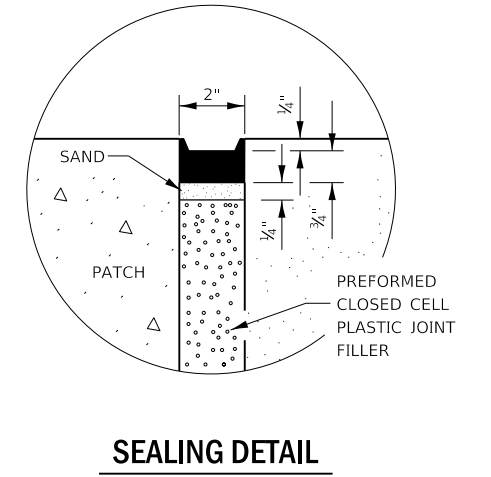
METHOD I
(WITHOUT HMA OVERLAY)



SEALING DETAIL



METHOD II
(WITH HMA OVERLAY)

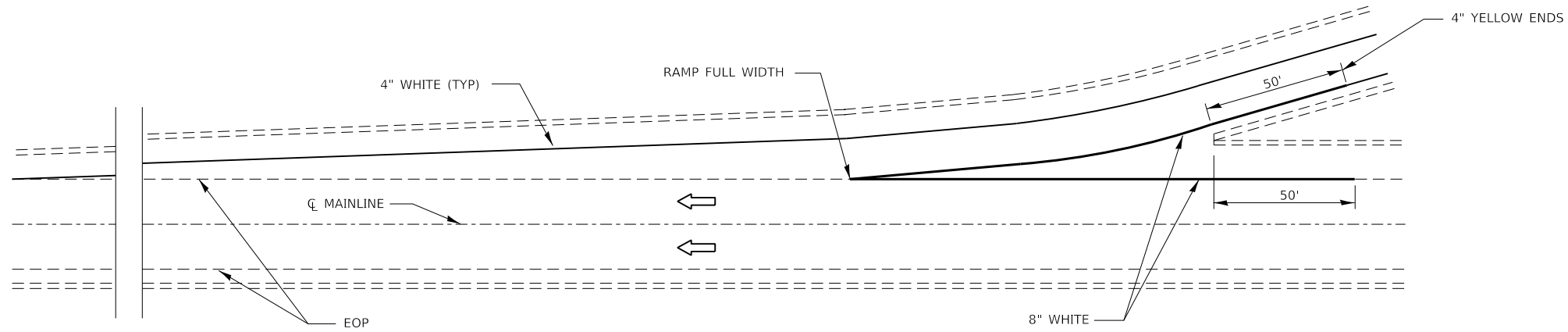


SEALING DETAIL

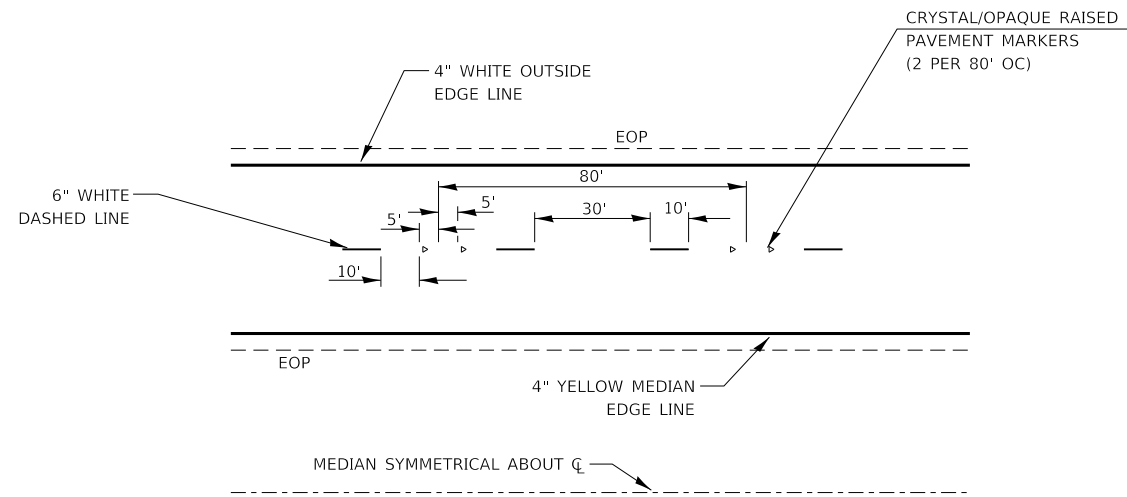
NOTE

* WHEN RE-ESTABLISHING A TRANSVERSE EXPANSION JOINT ON A TWO-WAY ROAD, REVERSE THE ORIENTATION OF THE DOWEL BARS WITH RESPECT TO TRAFFIC FOR ONE OF THE PATCHES SUCH THAT THE JOINT WILL BE CONTINUOUS ACROSS BOTH LANES.

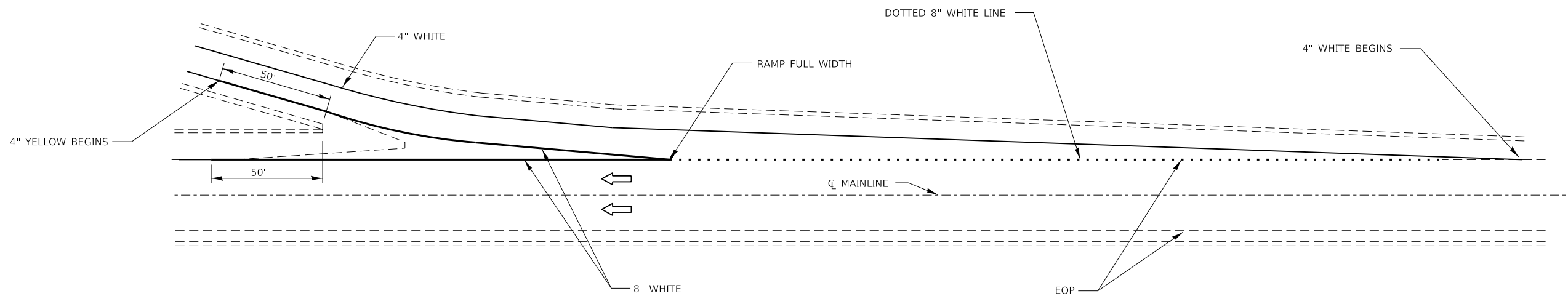
FILE NAME =	USER NAME = woodyetjp	DESIGNED -	REVISED -	STATE OF ILLINOIS DEPARTMENT OF TRANSPORTATION	CLASS B PATCHING DETAILS			F.A.I. RTE.	SECTION	COUNTY	TOTAL SHEETS	SHEET NO.
pw:\IL084EBIDINTEG\ifnotes.gov\PWIDOT\Documents\DOT Offices\District 3\Projects\D366J29\CADDData\66J29-details.dgn	DRAWN -	REVISED -	80					D3 I-80 PP 2019-1	*	18	17	
Default	PLOT SCALE = 100.0000' / in.	CHECKED -	REVISED -					*BUREAU, LASALLE & GRUNDY			CONTRACT NO. 66J29	
	PLOT DATE = 3/24/2018	DATE -	REVISED -					SCALE:	SHEET 2 OF 2 SHEETS	STA.	TO STA.	ILLINOIS FED. AID PROJECT



TYPICAL PAVEMENT MARKING FOR ENTRANCE RAMP TERMINALS



TYPICAL PAVEMENT MARKINGS



TYPICAL PAVEMENT MARKINGS FOR EXIT RAMP TERMINALS

FILE NAME =	USER NAME = woodyetjp	DESIGNED -	REVISED -
pw:\IL084EBIDINTEG\ilnotes.gov\PWIDOT\Documents\DOT Offices\District 3\Projects\D366J29\CADDData\66J29-details.dgn		DRAWN -	REVISED -
Default	PLOT SCALE = 100.0000' / in.	CHECKED -	REVISED -
	PLOT DATE = 3/24/2018	DATE -	REVISED -

**STATE OF ILLINOIS
DEPARTMENT OF TRANSPORTATION**

PAVEMENT MARKING DETAILS

SCALE: SHEET 1 OF 1 SHEETS STA. TO STA.

F.A.I. RTE.	SECTION	COUNTY	TOTAL SHEETS	SHEET NO.
80	D3 I-80 PP 2019-1	*	18	18
*BUREAU, LASALLE & GRUNDY			CONTRACT NO. 66J29	
ILLINOIS FED. AID PROJECT				