

STATE OF ILLINOIS
DEPARTMENT OF TRANSPORTATION

P.A. RTE	SECTION	COUNTY	TOTAL SHEETS	SHEET NO.
VAR	2018-005TR	VARIOUS	7	1
ILLINOIS CONTRACT NO. 62G31				

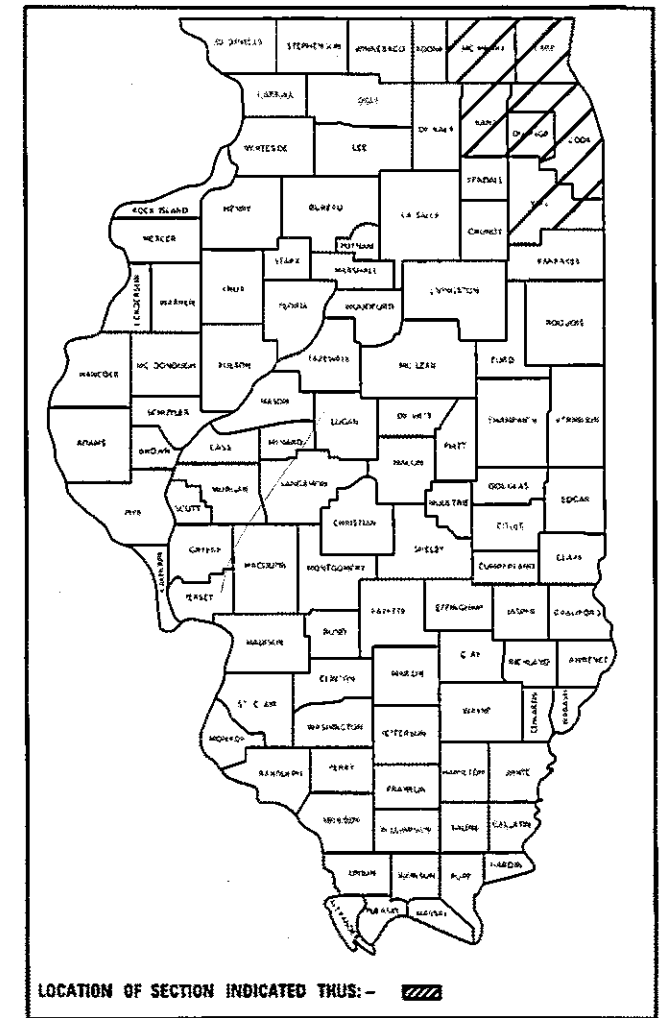
FOR INDEX OF SHEETS, SEE SHEET NO. 2

**PROPOSED
HIGHWAY PLANS**

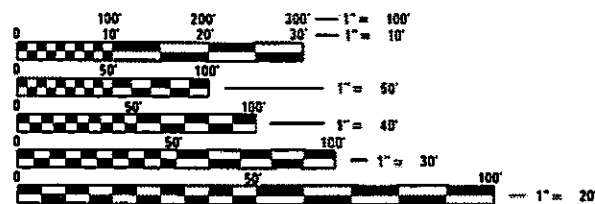
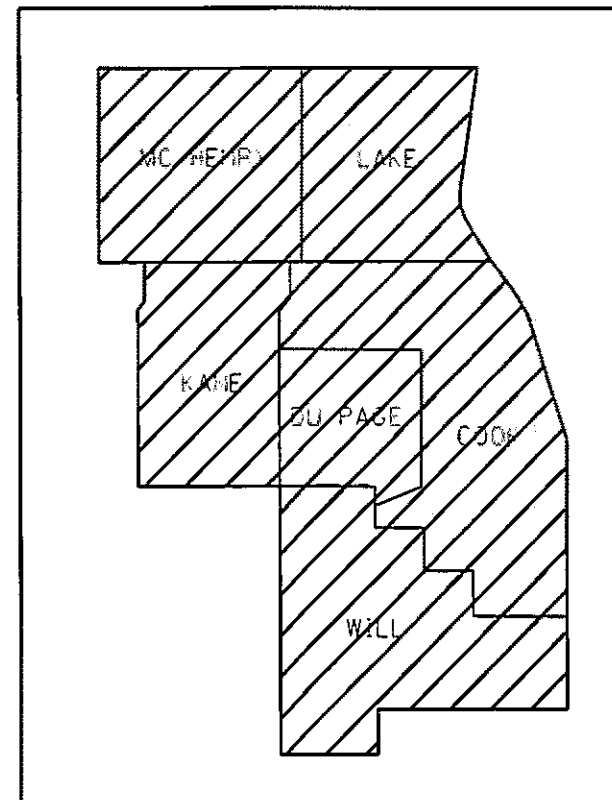
ROUTE: VARIOUS
SECTION: 2018-005TR
DEAD TREE REMOVAL
VARIOUS COUNTIES

C-91-171-18

D-91-274-18



IMPROVEMENTS ARE AT VARIOUS
LOCATIONS WITHIN DISTRICT ONE



FULL SIZE PLANS HAVE BEEN PREPARED USING STANDARD ENGINEERING SCALES. REDUCED SIZED PLANS WILL NOT CONFORM TO STANDARD SCALES. IN MAKING MEASUREMENTS ON REDUCED PLANS, THE ABOVE SCALES MAY BE USED.

J.U.L.I.E.
JOINT UTILITY LOCATION INFORMATION FOR EXCAVATION
1-800-892-0123
OR 811

PROJECT ENGINEER JAMES STUMPNER
PROJECT MANAGER GIOVANNA ZAFFINA (847) 705-4171

CONTRACT NO. 62G31

STATE OF ILLINOIS
DEPARTMENT OF TRANSPORTATION

SUBMITTED MARCH 5, 2018

[Signature]
REGIONAL ENGINEER

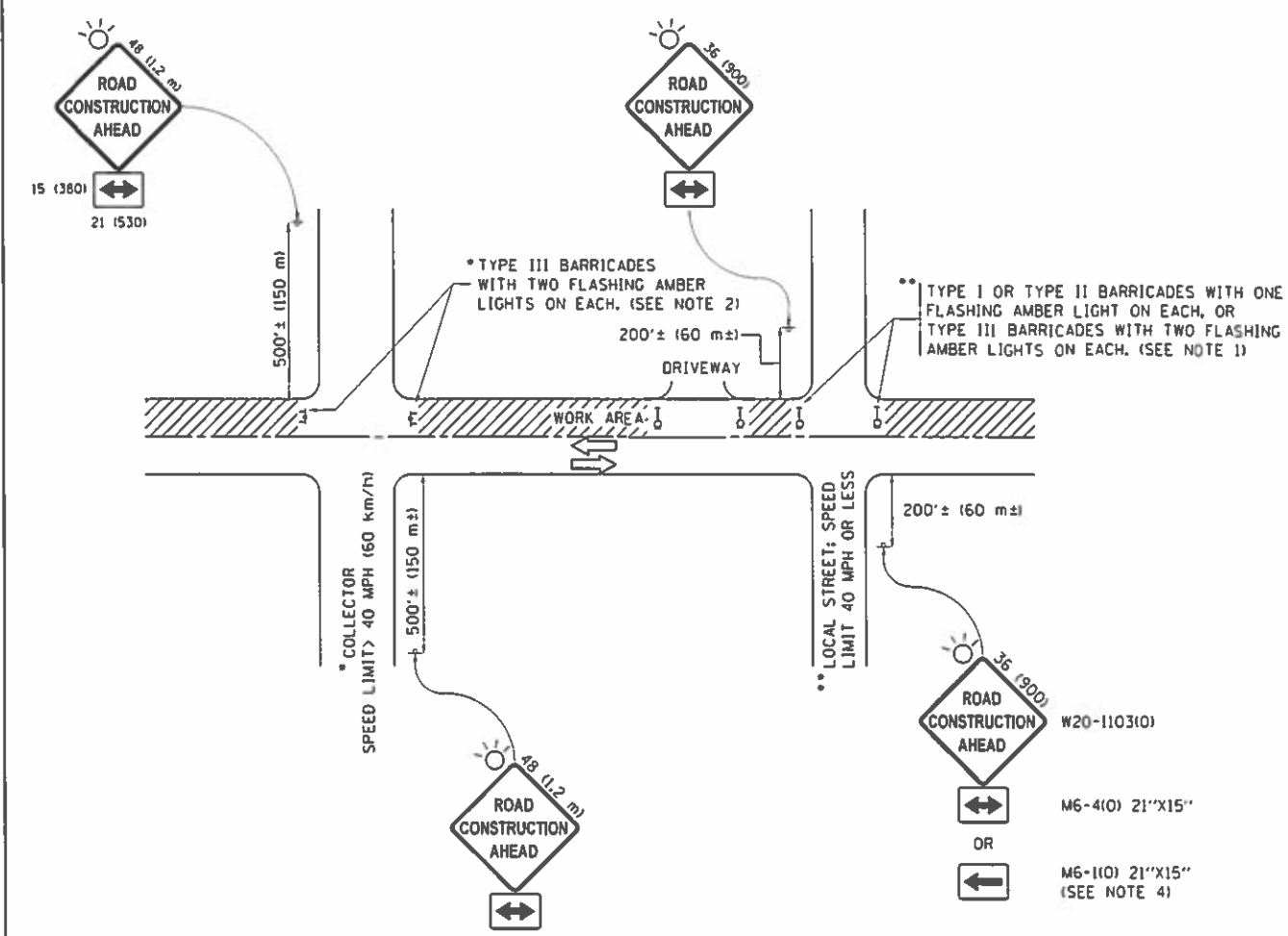
MAY 11, 2018

[Signature]
ENGINEER OF DESIGN AND ENVIRONMENT

MAY 10, 2018

[Signature]
DIRECTOR OF HIGHWAYS PROJECT IMPLEMENTATION 3

PRINTED BY THE AUTHORITY
OF THE STATE OF ILLINOIS



NOTES:

1. SIDE ROAD WITH A SPEED LIMIT OF 40 MPH (60 km/h) OR LESS AS SHOWN ON THE DRAWING AND AS DIRECTED BY THE ENGINEER:
 - a) ONE "ROAD CONSTRUCTION AHEAD" SIGN 36 x 36 (900x900) WITH A FLASHER MOUNTED ON IT APPROXIMATELY 200' (60 m) IN ADVANCE OF THE MAIN ROUTE.
 - b) THE CLOSED PORTION OF THE MAIN ROUTE SHALL BE PROTECTED BY BLOCKING WITH TYPE I, TYPE II OR TYPE III BARRICADES, 1/3 OF THE CROSS SECTION OF THE CLOSED PORTION.
2. SIDE ROAD WITH A SPEED LIMIT GREATER THAN 40 MPH (60 km/h) AS SHOWN ON THE DRAWING AND AS DIRECTED BY THE ENGINEER:
 - a) ONE "ROAD CONSTRUCTION AHEAD" SIGN 48 x 48 (1.2 m x 1.2 m) WITH A FLASHER MOUNTED ON IT APPROXIMATELY 500' (150 m) IN ADVANCE OF THE MAIN ROUTE.
 - b) THE CLOSED PORTION OF THE MAIN ROUTE SHALL BE PROTECTED BY BLOCKING WITH TYPE III BARRICADES, 1/2 OF THE CROSS SECTION OF THE CLOSED PORTION.
3. CONES MAY BE SUBSTITUTED FOR BARRICADES OR DRUMS AT HALF THE SPACING DURING DAY OPERATIONS. CONES SHALL BE A MINIMUM OF 28 (710) IN HEIGHT.
4. WHEN THE SIDE ROAD LIES BETWEEN THE BEGINNING OF THE MAINLINE SIGNING AND THE WORK ZONE, A SINGLE HEADED ARROW (M6-1) SHALL BE USED IN LIEU OF THE DOUBLE HEADED ARROW (M6-4).
5. WHEN WORK IS BEING PERFORMED ON A SIDE ROAD OR DRIVEWAY, FOLLOW THE APPLICABLE STANDARD(S). THE DIRECTIONAL ARROW (M6-1) OR M6-4) SHALL BE COVERED OR REMOVED WHEN NO LONGER CONSISTENT WITH THE TRAFFIC CONTROL SET-UP.
6. ADVANCE WARNING SIGNS ARE TO BE OMITTED ON DRIVEWAYS UNLESS OTHERWISE SPECIFIED IN THE PLANS OR BY THE ENGINEER.
7. THE TRAFFIC CONTROL AND PROTECTION FOR SIDE ROADS, INTERSECTIONS, AND DRIVEWAYS SHALL BE INCLUDED IN THE COST OF SPECIFIED TRAFFIC CONTROL STANDARDS OR ITEMS.

All dimensions are in inches (millimeters) unless otherwise shown.

FILE NAME :	USER NAME :	DESIGNED :	REVISED :
Documents\1007 Offices\District IV\Projects\Dis...	rootm	L.H.A.	A. HOUSEH 10-15-96
		DRAWN :	REVISED :
		CADDData\CAD\sheet\1c10.dgn	T. RAMMACHER 01-06-00
		CHECKED :	REVISED :
			A. SCHUETZE 07-01-13
		DATE :	REVISED :
		06-09	A. SCHUETZE 09-15-16

**STATE OF ILLINOIS
DEPARTMENT OF TRANSPORTATION**

TRAFFIC CONTROL AND PROTECTION FOR SIDE ROADS, INTERSECTIONS, AND DRIVEWAYS	
SCALE: NONE	SHEET 1 OF 1 SHEETS STA. TO STA.

F.A. RTE.	SECTION	COUNTY	TOTAL SHEETS	SHEET NO.
VAR	2015-005TR	VARIOUS	7	6
TC-10			CONTRACT NO. 62631	
ILLINOIS FED. AID PROJECT				

