

STATE OF ILLINOIS
DEPARTMENT OF TRANSPORTATION

F.A.P. RTE.	SECTION	COUNTY	TOTAL SHEETS	SHEET NO.
312	64PP-1	ST. CLAIR	6	1
		ILLINOIS	CONTRACT NO. 76L60	

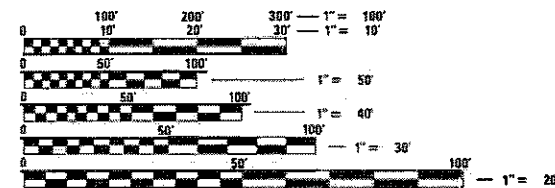
FOR INDEX OF SHEETS, SEE SHEET NO. 2

TRAFFIC DATA	
LOCATION	IL 3
2018 ADT	10600 (ACTUAL)
2028 ADT	12200 (ESTIMATED)
MU%	8.8
SU%	12.4

PROPOSED HIGHWAY PLANS

FAP ROUTE 312 (IL RTE. 3)
SECTION 64PP-1
PATCHING PROJECT
ST. CLAIR COUNTY

C-98-259-18

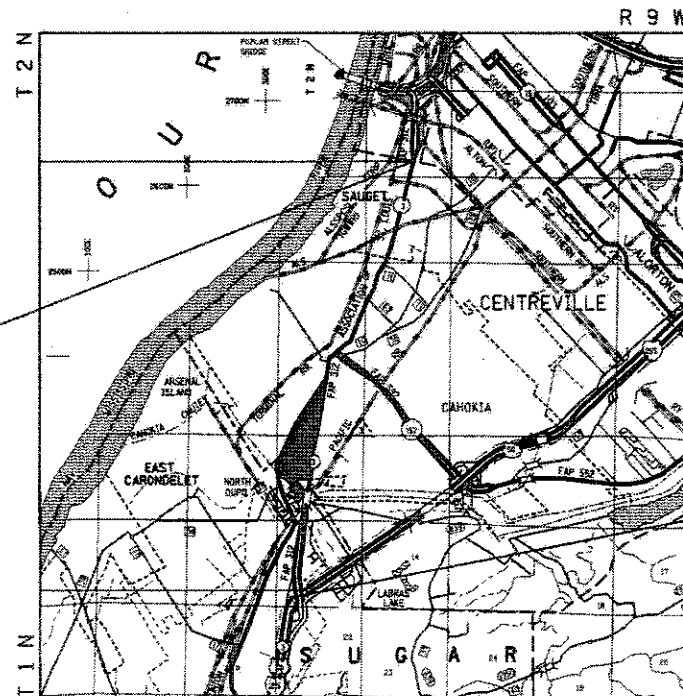


FULL SIZE PLANS HAVE BEEN PREPARED USING STANDARD ENGINEERING SCALES. REDUCED SIZED PLANS WILL NOT CONFORM TO STANDARD SCALES. IN MAKING MEASUREMENTS ON REDUCED PLANS, THE ABOVE SCALES MAY BE USED.

J.U.L.E.
JOINT UTILITY LOCATION INFORMATION FOR EXCAVATION
1-800-892-0123
OR 816

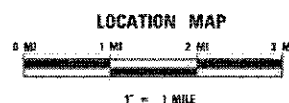
PROJECT ENGINEER: TIM PADGETT (618) 346-3325
PROJECT MANAGER: RAHSHUN MILLER (618) 346-3196

CONTRACT NO. 76L60



BEGIN PROJECT:
IL 3 & 8TH ST.
M.S. 0.00
LAT: 38.60681
LONG: -90.17163

END PROJECT:
IL 3 & I-255
M.S. 5.57
LAT: 38.53019
LONG: -90.19640



GROSS LENGTH = 29,409.6 FT. = 5.57 MILE
NET LENGTH = 15,840 FT. = 3.0 MILE
TOWNSHIP: SUGAR LOAF, CENTREVILLE

STATE OF ILLINOIS
DEPARTMENT OF TRANSPORTATION

SUBMITTED April 20, 2018
Jeffrey Z. Kow
REGIONAL ENGINEER

May 11, 2018
May 11, 2018
ENGINEER OF DESIGN AND ENVIRONMENT
DIRECTOR OF HIGHWAYS PROJECT IMPLEMENTATION

PRINTED BY THE AUTHORITY
OF THE STATE OF ILLINOIS

INDEX OF SHEETS

1. COVER SHEET
2. INDEX OF SHEETS, HIGHWAY STANDARDS, GENERAL NOTES, AND COMMITMENTS
3. SUMMARY QUANTITIES
4. LOCATION MAP
5. TYPICAL SECTIONS
6. SCHEDULE OF QUANTITIES

STANDARDS

000001-06	STANDARD SYMBOLS, ABBREVIATIONS AND PATTERNS
001006	DECIMAL OF AN INCH AND OF A FOOT
420001-09	PAVEMENT JOINTS
442201-03	CLASS C AND D PATCHES
701101-05	OFF ROAD OPERATIONS, MULTILANE, 15' TO 24' FROM EPAVEMENT EDGE
701421-08	LANE CLOSURE, MULTILANE, DAY OPERATIONS ONLY FOR SPEEDS > 45MPH TO 55MPH
701602-09	URBAN LANE CLOSURE, MULTILANE, 2W, WITH BIDIRECTIONAL LEFT TURN LANE
701606-10	URBAN SINGLE LANE CLOSURE, MULTILANE, 2W, WITH MOUNTABLE MEDIAN
701611-01	URBAN HALF ROAD CLOSURE, MULTILANE, 2W, WITH MOUNTABLE MEDIAN
701701-10	URBAN LANE CLOSURE, MULTILANE INTERSECTION
701901-07	TRAFFIC CONTROL DEVICES

MIXTURE REQUIREMENTS

ROUTE	FAP 312 (IL 3)
SECTION	64PP-1
COUNTY	ST. CLAIR
CONTRACT	76L60

DESCRIPTION	PATCHING - IL 3 FROM 8TH STREET TO I-255
-------------	--

ADT (CONSTRUCTION YR):	10,600
MU%	8.8
SU%	12.4
20 YR. ESAL'S:	7.56

MIXTURE USE	PATCHING	PARTIAL DEPTH PATCHING
AC/PG	PG 64-22	PG 64-22
RAP % (MAX)	SEE SPECIAL PROVISION	SEE SPECIAL PROVISION
DESIGN AIR VOIDS	4.0% @ Ndes = 90	4.0% @ Ndes = 90
MIX COMPOSITION (GRADATION MIXTURE)	IL 19.0	IL 9.5
FRICTION AGG	MIXTURE "B"	MIXTURE "D"
QUALITY MGMT PROGRAM	QC/QA	QC/QA

GENERAL NOTES

1. ILLINOIS STATE LAW REQUIRES A 48-HOUR NOTICE TO BE GIVEN TO ALL UTILITIES WITHIN THE PROJECT AREA BEFORE DIGGING. FIELD MARKING OF FACILITIES MAY BE OBTAINED BY CONTACTING J.U.L.I.E. OR FOR NON-MEMBERS, THE UTILITY COMPANY DIRECTLY. AGENCIES KNOWN TO HAVE FACILITIES WITHIN THE PROJECT AREA ARE AS FOLLOWS:

AMERICAN BOTTOMS REGIONAL WASTEWATER TREATMENT	SANITARY SEWER	BURIED
AMEREN ILLINOIS	GAS & ELECTRIC	AERIAL, BURIED
AT&T ILLINOIS	COMMUNICATIONS	AERIAL, BURIED
BUCKEYE PARTNERS L.P. - WOOD RIVER	PIPELINE	BURIED
VILLAGE OF CAHOKIA	WATER & SANITARY SEWER, PIPELINE	BURIED
CHARTER COMMUNICATIONS, INC.	CABLE TV	AERIAL, BURIED
CITY OF COLUMBIA	WATER & SANITARY SEWER	BURIED
COMMONFIELDS OF CAHOKIA PUBLIC WATER DISTRICT	WATER & SANITARY SEWER	BURIED
VILLAGE OF DUPO	WATER & SANITARY SEWER	BURIED
VILLAGE OF DUPO	GAS	BURIED
ENABLE MIDSTREAM PARTNERS	PIPELINE	BURIED
EXPLORER PIPELINE COMPANY	PIPELINE	BURIED
EXXONMOBILE PIPELINE COMPANY	PIPELINE	BURIED
HARRISONVILLE TELEPHONE COMPANY	COMMUNICATIONS	AERIAL, BURIED
ILLINOIS AMERICAN WATER COMPANY	WATER	BURIED
INDUSRTRIAL GAS PRODUCT, INC.	PIPELINE	BURIED
VERIZON BUSINESS	COMMUNICATIONS	AERIAL, BURIED
PHILLIPS 66 HARTFORD TERMINAL	PIPELINE	BURIED
PRAIRIE DU RPONT PUBLIC WATER DISTRICT	WATER	BURIED
VILLAGE OF SAUGET	WATER & SANITARY SEWER	BURIED
VILLAGE OF SAUGET	ELECTRIC	AERIAL, BURIED
SPIRE ENERGY	PIPELINE	BURIED
SUGAR LOAF TOWNSHIP SEWER SYSTEM	STORM SEWER	BURIED

2. THE CONTRACTOR AND THE ENGINEER SHALL BE AWARE THAT NO SURVEY WAS PERFORMED FOR THIS PROJECT. THE STATIONING, TOPOGRAPHY, AND QUANTITIES SHOWN IN THE PLANS WERE CREATED USING MICROFILM AND FIELD MEASUREMENTS. ALL SHALL BE ASSUMED TO BE APPROXIMATE. THE CONTRACTOR SHALL VERIFY DIMENSIONS AND CONDITIONS IN THE FIELD PRIOR TO CONSTRUCTION AND ORDERING OF MATERIALS.
3. THE RESIDENT ENGINEER SHALL VERIFY THE EXISTENCE OF HIGHWAY LIGHTING AND/OR INTELLIGENT TRANSPORTATION SYSTEMS (I.T.S.) UTILITIES WITHIN THE PROJECT LIMITS. IF HIGHWAY LIGHTING AND/OR I.T.S. EXISTS WITHIN THE PROJECT LIMITS, AND IF THESE ITEMS REQUIRE LOCATING, THE CONTRACTOR SHALL BE DIRECTED TO DO SO ACCORDING TO SECTION 803 OF THE STANDARD SPECIFICATIONS. THIS WORK SHALL BE PAID FOR ACCORDING TO ARTICLE 109.04 OF THE STANDARD SPECIFICATIONS.
4. THE DEPARTMENT STRONGLY ENCOURAGES THE PRIME CONTRACTOR AND THEIR APPROVED SUB-CONTRACTORS TO HIRE MINORITY, WOMEN AND DISADVANTAGED INDIVIDUALS FROM ITS FEDERALLY FUNDED HIGHWAY CONSTRUCTION CAREERS TRAINING PROGRAM (HCCTP) TO HELP MEET WORKFORCE AND TRAINEE GOALS. THIS PROGRAM IS TRAINING MINORITIES, WOMEN AND DISADVANTAGED INDIVIDUALS IN HIGHWAY CONSTRUCTION-RELATED SKILLS, E.G., MATH FOR THE TRADES, JOB READINESS, TECHNICAL SKILLS COURSEWORK (CARPENTRY, CONCRETE FLATWORK, BLUEPRINT READING, SITE PLANS, SITE WORK, TOOLS USE, ETC.) AND OSHA 10 HOUR CERTIFICATION, TO PREPARE THEM FOR A CAREER IN THE HIGHWAY CONSTRUCTION TRADES. GRADUATES ARE WELL-TRAINED AND READY TO BECOME PRODUCTIVE ENTRY-LEVEL CONSTRUCTION WORKERS. CONTACT THE DISTRICT 8 EEO OFFICE AT 618-346-3360 AND/OR THE HCCTP COORDINATOR AT 618-874-6528 TO LEARN MORE ABOUT THE PROGRAM AND FOR ASSISTANCE IN MEETING WORKFORCE AND TRAINEE GOALS.
5. PRIOR TO PATCHING, A PATCHING SURVEY SHALL BE PERFORMED TO DETERMINE PRIORITY PATCHING LOCATIONS. THE PATCHING SURVEY SHALL BE COORDINATED WITH THE BUREAU OF OPERATIONS FIELD ENGINEER TIM PRICE AT (618) 346-3284.
6. NO OVERNIGHT LANE CLOSURES WILL BE PERMITTED.
7. ANY EXCAVATION OR DROP-OFF OF MORE THAN 3" AT THE EDGE OF PAVEMENT SHALL BE PROTECTED WITH EXTENDED LEG BARRICADES AND APPROPRIATE LIGHTING.

COMMITMENTS

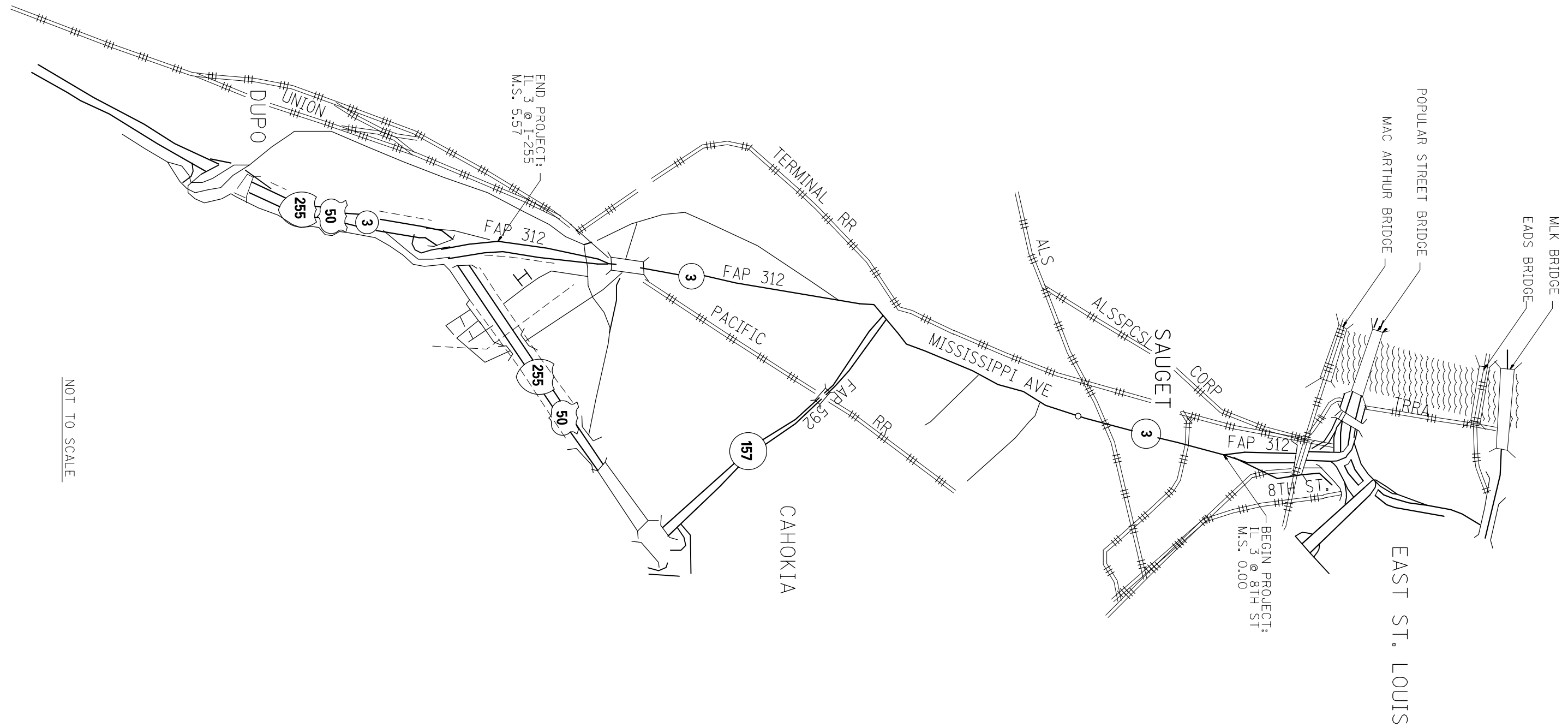
NONE

FILE NAME =	USER NAME = millerraj	DESIGNED -	REVISED -	STATE OF ILLINOIS DEPARTMENT OF TRANSPORTATION	INDEX OF SHEETS, HIGHWAY STANDARDS, GENERAL NOTES, AND COMMITMENTS	F.A.P. RTE.	SECTION	COUNTY	TOTAL SHEETS	SHEET NO.
pw:\IL\084EBIDINTEG.illinois.gov\PWIDOT\Documents\IDOT Offices\District 8\Projects\0876\DRAWING\DATA\6A0\Sheets\0876L60-sht-cover.dwg	DESIGNED -	REVISED -	312			64PP-1	ST. CLAIR	6	2	
Default	PLOT SCALE = 100.0000' / 1in.	CHECKED -	REVISED -			CONTRACT NO. 76L60				
	PLOT DATE = 3/19/2018	DATE -	REVISED -			ILLINOIS FED. AID PROJECT				
				SCALE:	SHEET	OF	SHEETS	STA.	TO	STA.

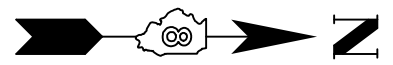
CODE NO.	ITEM	UNIT	100% STATE		CONSTR. CODE
			TOTAL QUANTITY	ROADWAY	
				0006	URBAN
44200168	PAVEMENT PATCHING, TYPE II, 14 INCH	SQ YD	326	326	
44200172	PAVEMENT PATCHING, TYPE III, 14 INCH	SQ YD	36	36	
44200174	PAVEMENT PATCHING, TYPE IV, 14 INCH	SQ YD	121	121	
67100100	MOBILIZATION	L SUM	1	1	
70100310	TRAFFIC CONTROL AND PROTECTION, STANDARD 701421	L SUM	1	1	
70102632	TRAFFIC CONTROL AND PROTECTION, STANDARD 701602	L SUM	1	1	
* 78000200	THERMOPLASTIC PAVEMENT MARKING - LINE 4"	FOOT	1010	1010	
* 78100100	RAISED REFLECTIVE PAVEMENT MARKER	EACH	198	198	
78300200	RAISED REFLECTIVE PAVEMENT MARKER REMOVAL	EACH	198	198	
X4406020	PARTIAL DEPTH REMOVAL, TYPE I, 2"	SQ YD	87.4	87.4	
X4421000	PARTIAL DEPTH PATCHING	TON	9.8	9.8	

* SPECIALTY ITEM

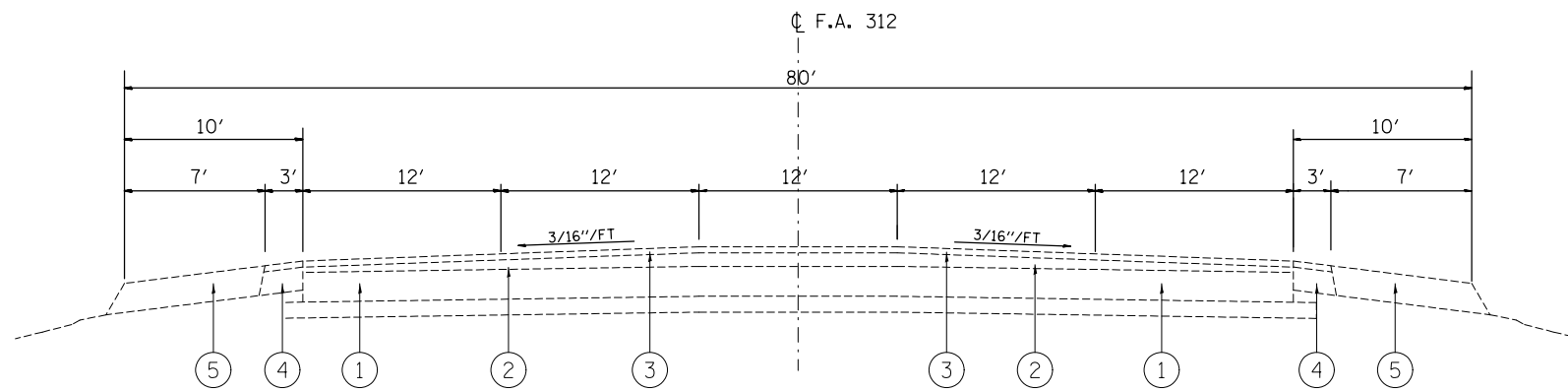
FILE NAME =	USER NAME = millerj	DESIGNED -	REVISED -	STATE OF ILLINOIS DEPARTMENT OF TRANSPORTATION	SUMMARY OF QUANTITIES	F.A.P. RTE.	SECTION	COUNTY	TOTAL SHEETS	SHEET NO.	
Default:	PLOT SCALE = 1/8" = 100'	CHECKED -	REVISED -			312	64PP-1	ST. CLAIR	6	3	
	PLOT DATE = 3/19/2018	DATE -	REVISED -			CONTRACT NO. 76L60		ILLINOIS FED. AID PROJECT			
						SCALE:	SHEET OF SHEETS	STA. TO STA.			



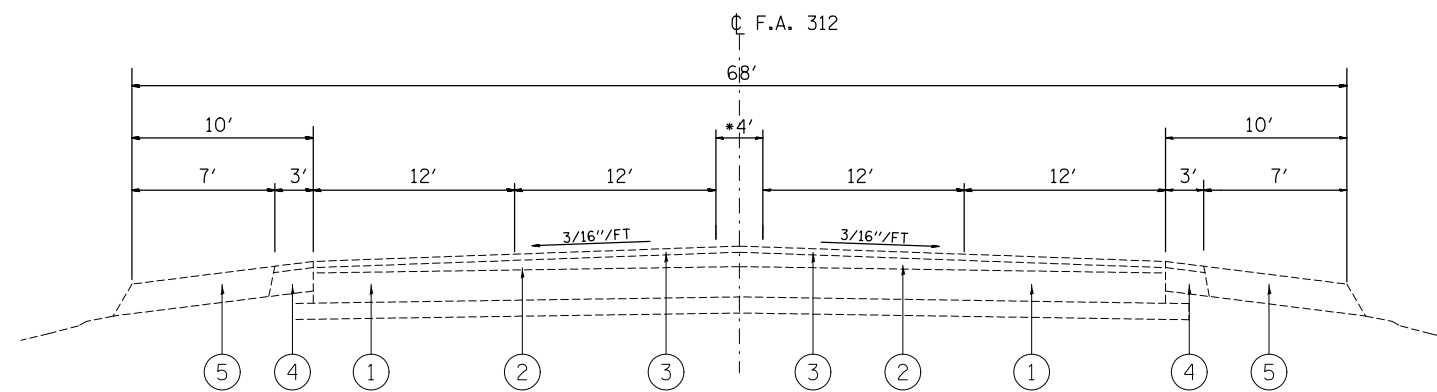
NOT TO SCALE



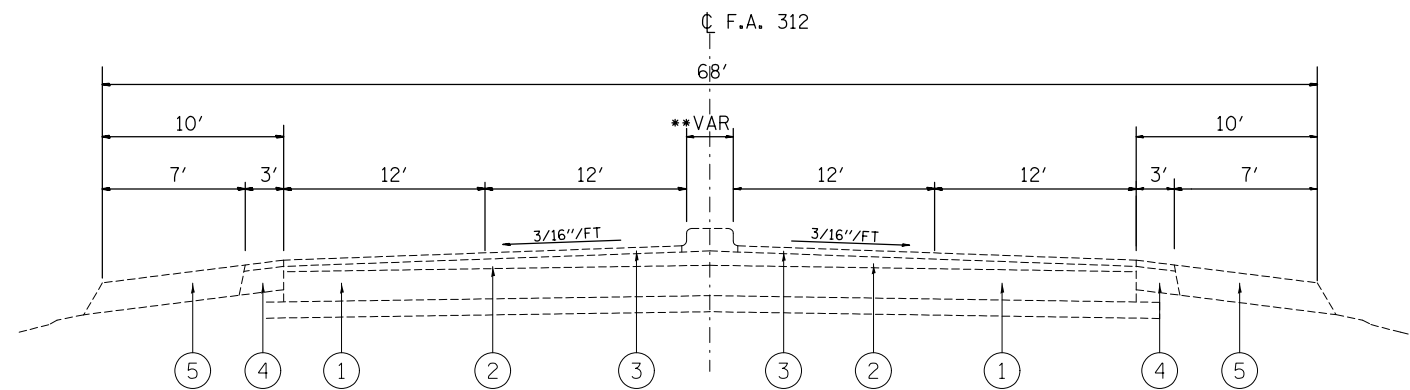
FILE NAME =	USER NAME = milleraj	DESIGNED -	REVISED -	STATE OF ILLINOIS DEPARTMENT OF TRANSPORTATION	LOCATION MAP				F.A.P. RTE.	SECTION	COUNTY	TOTAL SHEETS	SHEET NO.
pw:\IL\084EBIDINTEG\illinois.gov\PIWIDOT\Documents\IDOT Offices\District 8\Projects\0876\DRAWING\DATA\EAD\Sheets\0876L60\shd-cover.dwg		CHECKED -	REVISED -		312	64PP-1	ST. CLAIR	6	4				
Default		DATE -	REVISED -		SCALE: SHEET OF SHEETS STA. TO STA.				CONTRACT NO. 76L60				
	PLOT SCALE = 100.0000' / 1in.								ILLINOIS FED. AID PROJECT				
	PLOT DATE = 3/19/2018												



EXISTING TYPICAL
M.S. 0.00 TO M.S. 3.57



*PAINTED MEDIAN
EXISTING TYPICAL
M.S. 3.57 TO M.S. 4.57



** 6' TO 20' PCC MEDIAN
EXISTING TYPICAL
M.S. 4.54 TO M.S. 5.57

- ① EXISTING 10" PCC PAVEMENT
- ② EXISTING LEVELING BINDER, (MM) TYPE 2, (VARIABLE DEPTH)
- ③ EXISTING HMA CONCRETE SURFACE COURSE, MIX "D", CLASS I, 1 1/2"
- ④ EXISTING HMA SHOULDER, 8"
- ⑤ EXISTING AGGREGATE SHOULDERS TYPE B, 8"

FILE NAME =	USER NAME = milleraj	DESIGNED -	REVISED -
pw:\IL\084EBIDINTEG\illinois.gov\PWIDOT\Documents\IDOT Offices\District 8\Projects\0876\DRAWING\DATA\EA0\Sheets\D876L60-shft-cover		DRAWN -	REVISED -
Default	PLOT SCALE = 100.0000' / in.	CHECKED -	REVISED -
	PLOT DATE = 3/19/2018	DATE -	REVISED -

STATE OF ILLINOIS
DEPARTMENT OF TRANSPORTATION

TYPICAL SECTION

SCALE: SHEET OF SHEETS STA. TO STA.

F.A.P. RTE.	SECTION	COUNTY	TOTAL SHEETS	SHEET NO.
312	64PP-1	ST. CLAIR	6	5
CONTRACT NO. 76L60			ILLINOIS FED. AID PROJECT	

