

STATE OF ILLINOIS
DEPARTMENT OF TRANSPORTATION

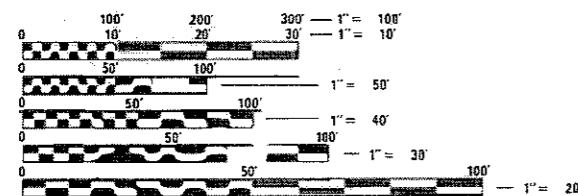
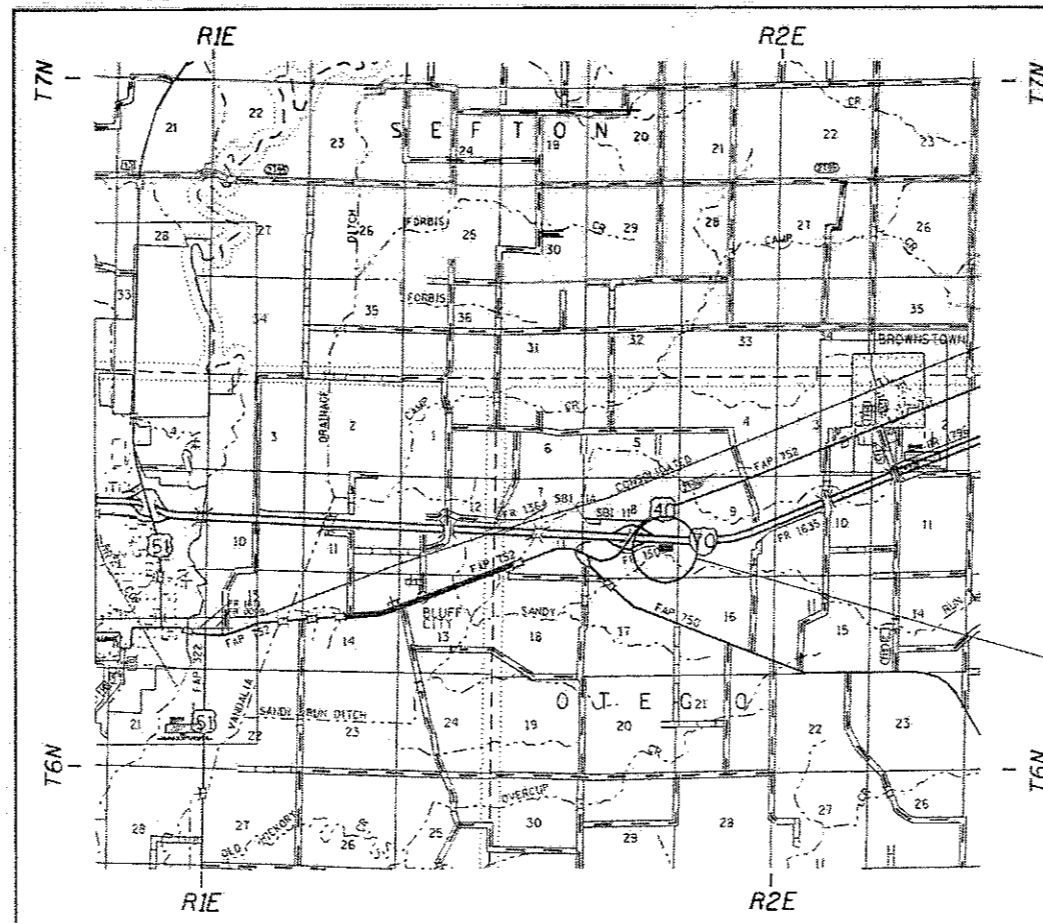
F.A.I. RTE.	SECTION	COUNTY	TOTAL SHEETS	SHEET NO.
70	D7 PATCHING 2019-1	FAYETTE	5	1
ILLINOIS			CONTRACT NO. 74837	

FOR INDEX OF SHEETS, SEE SHEET NO. 2

**PROPOSED
HIGHWAY PLANS**

F.A.I. ROUTE 70 (I-70)
SECTION D7 PATCHING 2019-1
PROJECT NHPP KV17(884)
BROWNSTOWN WEIGH STATION
FAYETTE COUNTY

C-97-034-18



FULL SIZE PLANS HAVE BEEN PREPARED USING STANDARD ENGINEERING SCALES. REDUCED SIZED PLANS WILL NOT CONFORM TO STANDARD SCALES. IN MAKING MEASUREMENTS ON REDUCED PLANS, THE ABOVE SCALES MAY BE USED.

J.U.L.I.E.
JOINT UTILITY LOCATION INFORMATION FOR EXCAVATION
1-800-892-0123
OR 811

PROJECT ENGINEER: TOM RONAN
PROJECT MANAGER: JACQUELINE ASHBAUGH
PHONE: 217-342-8320
CONTRACT NO. 74837



PROJECT LOCATION

STATE OF ILLINOIS
DEPARTMENT OF TRANSPORTATION

SUBMITTED March 23 2018
Jeffrey M. Southick
REGIONAL ENGINEER

May 11 2018
ENGINEER OF DESIGN AND ENVIRONMENT

May 10 2018
Paul P. [Signature]
DIRECTOR OF HIGHWAYS PROJECT IMPLEMENTATION 3

PRINTED BY THE AUTHORITY
OF THE STATE OF ILLINOIS

INDEX OF SHEETS

<u>SHEET NO.</u>	<u>ITEM</u>
1	COVER SHEET
2	INDEX OF SHEETS & GENERAL NOTES
3	SUMMARY OF QUANTITIES
4	PATCHING SCHEDULE
5	DETAILS SHEETS

THE FOLLOWING STANDARDS ARE A PART OF THESE PLANS AND ARE INCLUDED AFTER SHEET NO. 5:

<u>STD. NO.</u>	<u>DESCRIPTION</u>
000001-06	STANDARD SYMBOLS, ABBREVIATIONS, AND PATTERNS
001001-02	AREAS OF REINFORCEMENT BARS
442001-04	CLASS A PATCHES
701101-05	OFF-RD OPERATIONS, MULTILANE, 15' TO 24" FROM PAVEMENT EDGE
701451-05	RAMP CLOSURE FREEWAY/EXPRESSWAY
701901-07	TRAFFIC CONTROL DEVICES
780001-05	TYPICAL PAVEMENT MARKINGS

GENERAL NOTES

THIS PROJECT IS LOCATED AT THE BROWNSTOWN WEIGH STATION ALONG EASTBOUND I-70 IN FAYETTE COUNTY. THE WORK INCLUDED IN SECTION D7 PATCHING 2019-1 CONSISTS OF PAVEMENT PATCHING, TRAFFIC CONTROL, AND ANY OTHER WORK NECESSARY TO COMPLETE THIS PROJECT.

THE PAVEMENT PATCHES ARE CLASS A AND THE TYPE IS SPECIFIED ON THE PLANS. THE PATCHES ARE AT VARIOUS LOCATIONS ON THE RAMPS AND WILL BE LAID OUT BY THE ENGINEER IN THE FIELD.

PATCHING REINFORCEMENT NEEDS TO BE #5 REBAR.

THE RESIDENT ENGINEER SHALL CONTACT THE ILLINOIS STATE POLICE AT THE WEIGHT STATION, PHONE NUMBER IS 618-427-3708, TO INFORM THEM OF THE IMPENDING TEMPORARY CLOSURE OF THE WEIGH STATION.

MODEL: Default
 FILE NAME: P:\1108\B&E\BIDD\ITEC\Illinois.gov\PW\DOT\Documents\BIDD\Office\BIDD\7\Projects\174837\CADDData\CADD\Sheet\174837-51-01-000005.dgn

USER NAME = steffenmk	DESIGNED -	REVISED -
	DRAWN -	REVISED -
PLOT SCALE = 100,0000 ' / in.	CHECKED -	REVISED -
PLOT DATE = 3/23/2018	DATE -	REVISED -

**STATE OF ILLINOIS
DEPARTMENT OF TRANSPORTATION**

INDEX OF SHEETS AND GENERAL NOTES

SCALE: SHEET OF SHEETS STA. TO STA.

F.A.I. RTE.	SECTION	COUNTY	TOTAL SHEETS	SHEET NO.
70	D7 PATCHING 2019-1	FAYETTE	5	2
			CONTRACT NO. 74837	
		ILLINOIS	FED. AID PROJECT	

SUMMARY OF QUANTITIES			TOTAL QUANTITIES	CONSTRUCTION TYPE CODE		
CODE NO	ITEM	UNIT		0006		
44200529	CLASS A PATCHES, TYPE II, 8 INCH	SO YD	139	139		
44200533	CLASS A PATCHES, TYPE III, 8 INCH	SO YD	93	93		
44200535	CLASS A PATCHES, TYPE IV, 8 INCH	SO YD	90	90		
44213000	PATCHING REINFORCEMENT	SO YD	322	322		
44213200	SAW CUTS	FOOT	1605	1605		
44213204	TIE BARS 3/4"	EACH	6	6		
67100100	MOBILIZATION	LSUM	1	1		
70100820	TRAFFIC CONTROL AND PROTECTION, STANDARD 701451	LSUM	1	1		

MODEL: D:\MKT
 FILE NAME: P:\110404\BUDGET\TEC\Illinois.gov\FWIDOT\Documents\DOT_Office\Bldg\T:\Projects\74837\CAD\MA\CAD\Sheet\0774837.dwg:500.dgn

MODEL: Default
 FILE NAME: P:\1108\B&E\BIDD\ITEG\Illinois.gov\PW\DOT\Documents\DOT_Offices\Director_7\Projects\74837\CADD\DATA\CAD\patches\DOT74837-4-PC-Schedule.dgn

PATCHING SCHEDULE	CLASS A PATCHES, TYPE II, 8"	CLASS A PATCHES, TYPE III, 8"	CLASS A PATCHES, TYPE IV, 8"	PATCHING REINFORCEMENT	SAW CUTS	TIE BARS 3/4"
	SQ YD	SQ YD	SQ YD	SQ YD	FOOT	EACH
EB	106	54	36	196	1069	
EBRT	11			11	78	
EBLT	11			11	78	
BYPASS	11	39	54	104	380	6
TOTALS	139	93	90	322	1605	6

USER NAME = steffemk	DESIGNED -	REVISED -
	DRAWN -	REVISED -
PLOT SCALE = 100.0000 ' / in.	CHECKED -	REVISED -
PLOT DATE = 3/23/2018	DATE -	REVISED -

**STATE OF ILLINOIS
 DEPARTMENT OF TRANSPORTATION**

PATCHING SCHEDULE

SCALE: SHEET OF SHEETS STA. TO STA.

F.A.I. RTE.	SECTION	COUNTY	TOTAL SHEETS	SHEET NO.
70	D7 PATCHING 2019-1	FAYETTE	5	4
			CONTRACT NO. 74837	
		ILLINOIS	FED. AID PROJECT	

