

STATE OF ILLINOIS
DEPARTMENT OF TRANSPORTATION

* 32 + 1 = 33 TOTAL SHEETS

FAU RTE.	SECTION	COUNTY	TOTAL SHEETS	SHEET NO.
2807	1819 RS-5	COOK	32	1
ILLINOIS CONTRACT NO. 62F82				

FOR INDEX OF SHEETS, SEE SHEET NO. 2

THE PROJECT IS LOCATED
IN THE VILLAGES OF
WILMETTE AND NORTHFIELD.

TRAFFIC DATA

2014 ADT = 6750

POSTED SPEED LIMIT-30 MPH

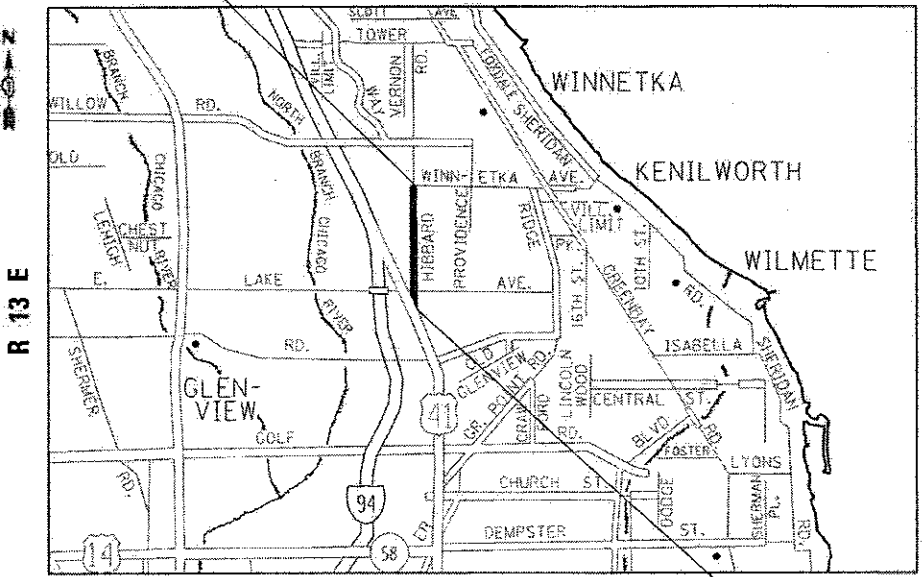
PROPOSED
HIGHWAY PLANS

FAU ROUTE 2807: HIBBARD RD
HILL RD/WINNETKA RD TO US 41 (SKOKIE RD)
SECTION 1819RS-5
RESURFACING (3P), PEDESTRIAN RAMPS
PROJECT: STP-P35W(109)
COOK COUNTY

C-91-061-18

PROJECT ENDS
STA 84+11.3

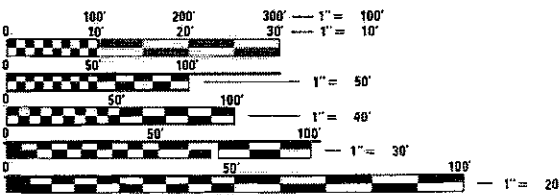
T 42 N



NEW TRIER TOWNSHIP

GROSS LENGTH = 6093.3 FT. = 1.154 MILE

PROJECT BEGINS
STA 23+18



FULL SIZE PLANS HAVE BEEN PREPARED USING STANDARD
ENGINEERING SCALES. REDUCED SIZED PLANS WILL NOT
CONFORM TO STANDARD SCALES. IN MAKING MEASUREMENTS
ON REDUCED PLANS, THE ABOVE SCALES MAY BE USED.

J.U.L.I.E.
JOINT UTILITY LOCATION INFORMATION FOR EXCAVATION
1-800-892-0123
OR 811

PROJECT ENGINEER: J. ALAIN MIDY (847) 221-3056
PROJECT MANAGER: FAWAD AQUEEL (847) 705-4247

CONTRACT NO. 62F82

D-91-212-18



LOCATION OF SECTION INDICATED THUS: -

STATE OF ILLINOIS
DEPARTMENT OF TRANSPORTATION

SUBMITTED March 13, 2018
Anthony J. Quigley REGIONAL ENGINEER
May 11, 2018
Paul P. Chitt ENGINEER OF DESIGN AND ENVIRONMENT
DIRECTOR OF HIGHWAYS PROJECT IMPLEMENTATION

PRINTED BY THE AUTHORITY
OF THE STATE OF ILLINOIS

MODEL: Default
FILE NAME: p:\wul08a\BID\NTEG Illinois.gov\PIWDOT\Documents\DOT Offices\District 1\Projects\JD121218\CADD\data\Design\JD121218-shr-plan.dgn

INDEX OF SHEETS

STATE STANDARDS

GENERAL NOTES

1.	TITLE SHEET		
2.	INDEX OF SHEETS, STATE STANDARDS AND GENERAL NOTES	442201-03	CLASS C AND D PATCHES
3-4,4A.	SUMMARY OF QUANTITIES	606001-07	CONCRETE CURB TYPE "B" AND COMBINATION CURB AND GUTTER
5.	EXISTING AND PROPOSED TYPICAL SECTIONS	701001-02	OFF-ROAD OPERATIONS, 2L, 2W, MORE THAN 15' AWAY
6-8.	ROADWAY AND PAVEMENT MARKING PLAN	701006-05	OFF-ROAD OPERATIONS, 2L, 2W, 15' TO 24" FROM PAVEMENT EDGE
9-11.	DETECTOR LOOP REPLACEMENT PLANS	701011-04	OFF-ROAD MOVING OPERATIONS, 2L, 2W, DAY ONLY
12-21.	ADA RAMPS	701301-04	LANE CLOSURE, 2L, 2W, SHORT TIME OPERATIONS
22.	DETAILS FOR FRAMES AND LIDS ADJUSTMENT WITH MILLING (BD-08)	701311-03	LANE CLOSURE, 2L, 2W, MOVING OPERATIONS-DAY ONLY
23.	PAVEMENT PATCHING FOR HMA SURFACED PAVEMENT (BD-22)	701501-06	URBAN LANE CLOSURE,2L, 2W, UNDIVIDED
24.	CURB OR CURB AND GUTTER REMOVAL AND REPLACEMENT (BD-24)	701701-10	URBAN LANE CLOSURE, MULTILANE INTERSECTION
25.	BUTT JOINT AND HMA TAPER DETAILS (BD-32)	701801-06	SIDEWALK, CORNER OR CROSSWALK CLOSURE
26.	TRAFFIC CONTROL AND PROTECTION FOR SIDE ROADS, INTERSECTIONS AND DRIVEWAYS (TC-10)	701901-07	TRAFFIC CONTROL DEVICES
27.	TYPICAL APPLICATIONS RAISED REFLECTIVE PAVEMENT MARKERS (SNOW PLOW RESISTANT) (TC-11)	780001-05	TYPICAL PAVEMENT MARKINGS
28.	DISTRICT ONE TYPICAL PAVEMENT MARKINGS (TC-13)	781001-04	TYPICAL APPLICATIONS RAISED REFLECTIVE PAVEMENT MARKERS
29	TRAFFIC CONTROL AND PROTECTION AT TURN BAYS (TO REMAIN OPEN TO TRAFFIC) (TC-14)	886001-01	DETECTOR LOOP INSTALLATIONS
30.	PAVEMENT MARKING LETTERS AND SYMBOLS FOR TRAFFIC STAGING (TC-16)	886006-01	TYPICAL LAYOUTS FOR DETECTION LOOPS
31.	ARTERIAL ROAD INFORMATION SIGN (TC-22)		
32.	DISTRICT 1 - DETECTOR LOOP INSTALLATION DETAILS FOR ROADWAY RESURFACING (TS-07)		

BEFORE STARTING ANY EXCAVATION, THE CONTRACTOR SHALL CALL "J.U.L.I.E." AT (800) 892-0123 OR 811 FOR FIELD LOCATIONS OF BURIED ELECTRIC, TELEPHONE AND GAS UTILITIES. 48 HOUR NOTIFICATION IS REQUIRED.

TEN (10) FOOT TRANSITIONS SHALL BE USED TO MATCH PROPOSED CURB AND GUTTER AND MEDIAN ITEMS OF WORK TO EXISTING CURBS AND GUTTER AND MEDIANS IN THE FIELD, UNLESS OTHERWISE SHOWN. THE TRANSITIONS SHALL BE PAID FOR AT THE CONTRACT UNIT PRICE FOR THE PROPOSED ITEMS OF WORK SPECIFIED.

THE CONTRACTOR SHALL COORDINATE CONSTRUCTION ACTIVITIES WITH UTILITY COMPANIES AND THE VILLAGE OF WILMETTE.

THE CONTRACTOR WILL NOT BE ALLOWED TO SET UP A YARD OR FIELD OFFICE ON STATE PROPERTY WITHOUT WRITTEN PERMISSION FROM THE DEPARTMENT.

ANY PAVEMENT MARKINGS AND RAISED REFLECTIVE PAVEMENT MARKERS OBLITERATED BY MILLING AND RESURFACING OPERATIONS ON SIDE STREETS AND ENTRANCES SHALL BE REPLACED AND PAID FOR IN KIND.

BEFORE BEGINNING ANY WORK, THE CONTRACTOR SHALL RETAIN AND RECORD FOR FUTURE REFERENCE, ALL EXISTING PAVEMENT MARKING LINES (AND RAISED REFLECTIVE PAVEMENT MARKERS) IN ORDER THAT THESE LOCATIONS CAN BE RE-ESTABLISHED FOR STRIPING. EXACT LOCATIONS OF ALL PAVEMENT MARKINGS SHALL BE AS DIRECTED BY THE ENGINEER.

ALL PAVEMENT PATCHING LOCATIONS WILL BE DETERMINED IN THE FIELD BY THE ENGINEER.

LOCATION OF COMBINATION CONCRETE CURB AND GUTTER REMOVAL AND REPLACEMENT WILL BE DETERMINED IN THE FIELD BY THE ENGINEER.

DRAINAGE ADJUSTMENT OR RECONSTRUCTION LOCATIONS WILL BE DETERMINED IN THE FIELD BY THE ENGINEER.

IT SHALL BE THE CONTRACTOR'S RESPONSIBILITY TO VERIFY ALL DIMENSIONS AND CONDITIONS EXISTING IN THE FIELD PRIOR TO CONSTRUCTION AND ORDERING OF MATERIALS.

FRAMES AND GRATES ADJUSTMENT OF PRIVATE UTILITIES WITHIN THE LIMITS OF THE IMPROVEMENTS SHALL BE DONE BY THEIR RESPECTIVE OWNERS AND ARE NOT PART OF THIS CONTRACT.

THE CONTRACTOR SHALL CONTACT THE DISTRICT ONE TRAFFIC CONTROL SUPERVISOR AT (847)705-4470 A MINIMUM OF 72 HOURS IN ADVANCE OF BEGINNING WORK.

THE RESIDENT ENGINEER SHALL CONTACT THE AREA TRAFFIC FIELD ENGINEER, DON SHIARUGI VIA EMAIL AT Don.Shiarugi@Illinois.gov AT LEAST TWO (2) WEEKS PRIOR TO PLACING PERMANENT PAVEMENT MARKINGS.

THESE PLANS HAVE BEEN PREPARED FROM NOTES RECEIVED FROM THE BUREAU OF CONSTRUCTION.

THE CONTRACTOR SHALL BE REQUIRED TO PROVIDE ACCESS TO ABUTTING PROPERTY AT ALL TIMES DURING THE CONSTRUCTION OF THIS PROJECT.

DO NOT SCALE PLANS FOR CONSTRUCTION DIMENSIONS.

DOUBLE LANE MARKERS ARE TO BE USED AS SHOWN ON THE DISTRICT ONE DETAIL "TYPICAL APPLICATIONS - RAISED REFLECTIVE PAVEMENT MARKERS (SNOW-PLOW RESISTANT)" SHOWN IN THE PLANS.

PAVEMENT MARKING TAPE, TYPE III SHALL BE USED FOR SHORT TERM PAVEMENT MARKINGS ON ALL FINAL SURFACES.

TOPSOIL, 4" AND SODDING SHALL BE PLACED IN AREAS WHERE THE EXISTING SOD IS DISTURBED BY PROPOSED SIDEWALK CONSTRUCTION. FINAL LOCATIONS SHALL BE DETERMINED BY RESIDENT ENGINEER.

CONTACT THE IDOT ROADSIDE DEVELOPMENT UNIT AT 847-705-4171 AT LEAST 2 WEEKS PRIOR TO BEGINING WORK FOR LAYOUT.

	USER NAME = gorengautab	DESIGNED -	REVISED -	STATE OF ILLINOIS DEPARTMENT OF TRANSPORTATION	INDEX OF SHEETS, STATE STANDARDS AND GENERAL NOTES HIBBARD RD. U.S. RTE. 41 TO HILL RD./WINNETKA RD.	F.A.U. RTE.	SECTION	COUNTY	TOTAL SHEETS	SHEET NO.	
		DRAWN -	REVISED -			2807	1819R5-5	COOK	32	2	
	PLOT SCALE = 100.0000 ' / in.	CHECKED -	REVISED -			CONTRACT NO. 62F82					
	PLOT DATE = 3/19/2018	DATE -	REVISED -			SCALE:	SHEET	OF	SHEETS	STA.	TO STA.
								ILLINOIS FED. AID PROJECT			

SUMMARY OF QUANTITIES				CONSTRUCTION TYPE CODE 0005					
CODE NO	ITEM	UNIT	URBAN TOTAL QUANTITIES	0005 80% FED 20% STATE					
20100110	TREE REMOVAL (6 TO 15 UNITS DIAMETER)	UNIT	30	30					
20100210	TREE REMOVAL (OVER 15 UNITS DIAMETER)	UNIT	95	95					
20101350	TREE PRUNING (OVER 10 INCH DIAMETER)	EACH	3	3					
20200100	EARTH EXCAVATION	CU YD	57	57					
21101615	TOPSOIL FURNISH AND PLACE, 4"	SO YD	232	232					
25000400	NITROGEN FERTILIZER NUTRIENT	POUND	4.5	4.5					
25000600	POTASSIUM FERTILIZER NUTRIENT	POUND	4.5	4.5					
25200110	SODDING, SALT TOLERANT	SO YD	232	232					
25200200	SUPPLEMENTAL WATERING	UNIT	2.5	2.5					
40600290	BITUMINOUS MATERIALS (TACK COAT)	POUND	14320	14320					
40600400	MIXTURE FOR CRACKS, JOINTS, AND FLANGWAYS	TON	33	33					
40600827	POLYMERIZED LEVELING BINDER (MACHINE METHOD), IL-4.75, N50	TON	890.5	890.5					
40600982	HOT-MIX ASPHALT SURFACE REMOVAL - BUTT JOINT	SO YD	225	225					
40601005	HOT-MIX ASPHALT REPLACEMENT OVER PATCHES	TON	7.2	7.2					
40603335	HOT-MIX ASPHALT SURFACE COURSE, MIX "D", N50	TON	1811	1811					
17									
	* SPECIALTY ITEM								

SUMMARY OF QUANTITIES				CONSTRUCTION TYPE CODE 0005					
CODE NO	ITEM	UNIT	URBAN TOTAL QUANTITIES	0005 80% FED 20% STATE					
42001300	PROTECTIVE COAT	SO YD	177	177					
42400200	PORTLAND CEMENT CONCRETE SIDEWALK 5 INCH	SO FT	3077	3077					
42400800	DETECTABLE WARNINGS	SO FT	395	395					
44000158	HOT-MIX ASPHALT SURFACE REMOVAL, 2 1/4"	SO YD	21545	21545					
44000600	SIDEWALK REMOVAL	SO FT	3133	3133					
44002216	HOT-MIX ASPHALT REMOVAL OVER PATCHES, 4"	SO YD	32	32					
44201803	CLASS D PATCHES, TYPE II, 13 INCH	SO YD	32	32					
48102100	AGGREGATE WEDGE SHOULDER, TYPE B	TON	183	183					
60265700	VALVE VAULTS TO BE ADJUSTED	EACH	1	1					
* 66900200	NON-SPECIAL WASTE DISPOSAL	CU YD	57	57					
* 66900450	SPECIAL WASTE PLANS AND REPORTS	L SUM	1	1					
* 66900530	SOIL DISPOSAL ANALYSIS	EACH	3	3					
67000400	ENGINEER'S FIELD OFFICE, TYPE A	CAL MO	6	6					
67100100	MOBILIZATION	L SUM	1	1					
70102620	TRAFFIC CONTROL AND PROTECTION, STANDARD 701501	L SUM	1	1					
15									

FILE NAME :		USER NAME : gorenpo/lab	DESIGNED -	REVISED -	STATE OF ILLINOIS DEPARTMENT OF TRANSPORTATION				SUMMARY OF QUANTITIES				F.A.U. RTE.	SECTION	COUNTY	TOTAL SHEETS	SHEET NO.
p:\NLD\B4E\BID\ITG\Illinois\gorenpo\WDDP\Documents\IND01		Office/District/NPro/Projects/DIR/218-CAD/Drawn/Design/DIR/218-666/Rev/1	DRANK	REVISED -					2807				1819RS-5	COOK	32	3	
		PLOT SCALE = 100.0000' / In.	CHECKED -	REVISED -									CONTRACT NO. 62FB2				
		PLOT DATE = 3/20/2018	DATE -	REVISED -									FED. ROAD DIST. NO. 1 ILLINOIS FED. AID PROJECT				
SCALE:		SHEET NO. OF		SHEETS STA.		TO STA.											

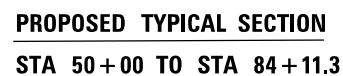
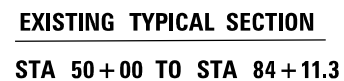
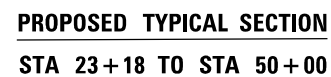
SUMMARY OF QUANTITIES					URBAN TOTAL QUANTITIES	CONSTRUCTION TYPE CODE 0005				
CODE NO	ITEM	UNIT	0005 80% FED 20% STATE							
70102635	TRAFFIC CONTROL AND PROTECTION, STANDARD 701701	L SUM	1	1						
70102640	TRAFFIC CONTROL AND PROTECTION, STANDARD 701801	L SUM	1	1						
70300100	SHORT TERM PAVEMENT MARKING	FOOT	5895	5895						
70300150	SHORT TERM PAVEMENT MARKING REMOVAL	SO FT	1965	1965						
70300210	TEMPORARY PAVEMENT MARKING LETTERS AND SYMBOLS	SO FT	36.4	36.4						
70300220	TEMPORARY PAVEMENT MARKING - LINE 4"	FOOT	13765	13765						
70300240	TEMPORARY PAVEMENT MARKING - LINE 6"	FOOT	197	197						
70300260	TEMPORARY PAVEMENT MARKING - LINE 12"	FOOT	690	690						
70300280	TEMPORARY PAVEMENT MARKING - LINE 24"	FOOT	296	296						
70300520	PAVEMENT MARKING TAPE, TYPE III 4"	FOOT	1500	1500						
78000100	THERMOPLASTIC PAVEMENT MARKING - LETTERS AND SYMBOLS	SO FT	36.4	36.4						
78000200	THERMOPLASTIC PAVEMENT MARKING - LINE 4"	FOOT	13765	13765						
78000400	THERMOPLASTIC PAVEMENT MARKING - LINE 6"	FOOT	197	197						
78000600	THERMOPLASTIC PAVEMENT MARKING - LINE 12"	FOOT	690	690						
78000650	THERMOPLASTIC PAVEMENT MARKING - LINE 24"	FOOT	296	296						
* SPECIALTY ITEM										

SUMMARY OF QUANTITIES					URBAN TOTAL QUANTITIES	CONSTRUCTION TYPE CODE 0005				
CODE NO	ITEM	UNIT	0005 80% FED 20% STATE							
* 78100100	RAISED REFLECTIVE PAVEMENT MARKER	EACH	192	192						
78300200	RAISED REFLECTIVE PAVEMENT MARKER REMOVAL	EACH	178	178						
* 85000200	MAINTENANCE OF EXISTING TRAFFIC SIGNAL INSTALLATION	EACH	2	2						
* 87301305	ELECTRIC CABLE IN CONDUIT, LEAD-IN, NO. 14 1 PAIR	FOOT	618	618						
* 88500100	INDUCTIVE LOOP DETECTOR	EACH	4	4						
* 88600600	DETECTOR LOOP REPLACEMENT	FOOT	703	703						
* 89500400	RELOCATE EXISTING PEDESTRIAN PUSH-BUTTON	EACH	2	2						
* 89502200	MODIFY EXISTING CONTROLLER	EACH	1	1						
* 89502210	MODIFY EXISTING CONTROLLER CABINET	EACH	1	1						
* 89502300	REMOVE ELECTRIC CABLE FROM CONDUIT	FOOT	618	618						
* 89502376	REBUILD EXISTING HANDHOLE	EACH	1	1						
X0320050	CONSTRUCTION LAYOUT (SPECIAL)	L SUM	1	1						
X2010400	STUMP REMOVAL ONLY	UNIT	460	460						
X2020110	GRADING AND SHAPING SHOULDERS	UNIT	88	88						
X4421790	CLASS D PATCHES, TYPE II, 12 INCH (SPECIAL)	SO YD	5	5						
15										

FILE NAME =	USER NAME = greggautab	DESIGNED -	REVISED -	STATE OF ILLINOIS DEPARTMENT OF TRANSPORTATION				SUMMARY OF QUANTITIES				F.A.J. RTE.	SECTION	COUNTY	TOTAL SHEETS	SHEET NO.
p:\NLD\4E9D\NETG\Illinois\p\NLD\Documents\NLD	Office\District\Projects\01212\B\CAD\Drawn\Design\01212	CHECKED -	REVISED -									2807	1819R5-5	COOK	32	4
PLOT SCALE = 1000000' / 1"		DATE -	REVISED -									CONTRACT NO. 62F82				
PLOT DATE = 3/20/2018																
				SCALE:		SHEET NO.		OF	SHEETS	STA.	TO STA.		FED. ROAD DIST. NO. 1 ILLINOIS FED. AID PROJECT			



**CONTRACTOR SHALL PATCH FIRST
BEFORE MILLING**



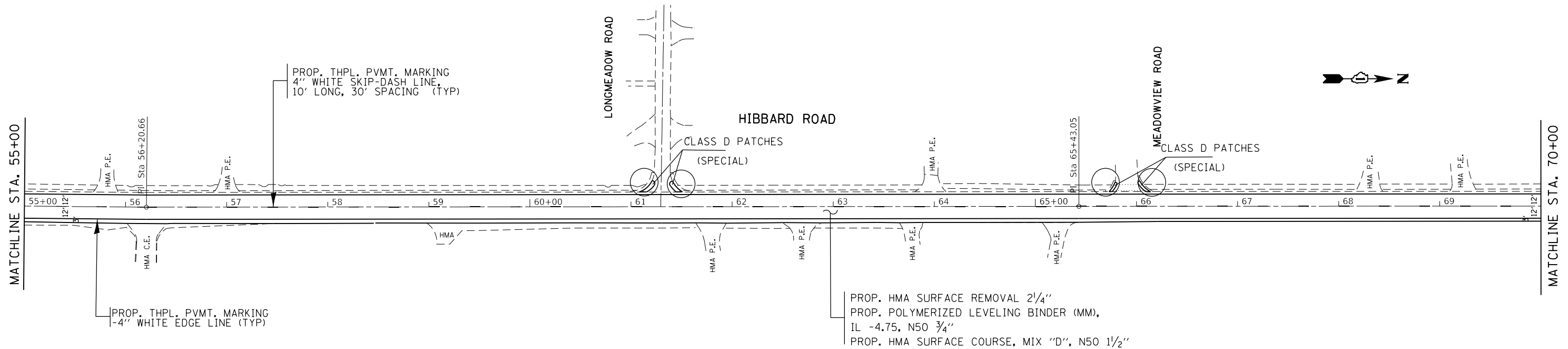
- 1 EXISTING COMBINATION CONCRETE CURB AND GUTTER
2 EXISTING PCC $\pm 9''$
3 PROPOSED HMA SURFACE REMOVAL, $2\frac{1}{4}''$
4 EXISTING HMA PAVEMENT AFTER MILLING, $\pm 1\frac{3}{4}''$
5 PROPOSED POLYMERIZED LEVELING BINDER (MM) IL -4.75, N 50, $\frac{3}{4}''$
6 PROPOSED HMA SURFACE COURSE MIX "D", N50, $1\frac{1}{2}''$
7 EXISTING AGGREGATE SHOULDER
8 PROP. AGGREGATE WEDGE SHOULDER, TYPE B

HOT-MIX ASPHALT MIXTURE REQUIREMENTS		
MIXTURE TYPE	AIR VOIDS Ndes	QUALITY MANAGEMENT PROGRAM (QMP)
PAVEMENT RESURFACING		
HOT-MIX ASPHALT SURFACE COURSE, MIX "D", N 50 (IL -9.5 mm)	4% @ 50 GYR.	QCP
POLYMERIZED LEVELING BINDER (MACHINE METHOD), IL -4.75, N50	3.5% @ 50 GYR.	QC / QA
PATCHING		
CLASS D PATCHES (HMA BINDER IL-19 mm)	4% @ 70 GYR.	QC / QA
HMA REPLACEMENT OVER PATCHES (HMA BINDER IL-19 mm)	4% @ 70 GYR.	QC / QA
CLASS D PATCHES (SPECIAL), 12"		
HOT-MIX ASPHALT SURFACE COURSE, MIX "D", N 50 (IL -9.5 mm) 2"	4% @ 50 GYR.	QC / QA
HOT-MIX ASPHALT BINDER COURSE, IL -19, N70, 10"	4% @ 70 GYR.	QC / QA
QMP Designation: Quality Control / Quality Assurance (QC / QA); Quality Control for Performance (QCP);		

- THE UNIT WEIGHT USED TO CALCULATE ALL HOT-MIX ASPHALT SURFACE MIXTURES IS 112 LBS / SQ. YD./ IN
- THE "AC TYPE" FOR POLYMERIZED HMA MIXES SHALL BE "SBS / SBR PG 76-22" AND FOR NON-POLYMERIZED HMA THE "AC TYPE" SHALL BE PG 64-22" UNLESS MODIFIED BY DISTRICT ONE SPECIAL PROVISIONS.
- FOR USE OF RECYCLED MATERIALS SEE SPECIAL PROVISIONS.
- QUALITY MANAGEMENT PROGRAM (QMP) IDENTIFIES THE PARTICULAR QUANTITY CONTROL SPECIFICATION THAT APPLIES TO THE HMA MIXTURE.

FILE NAME: DWG1	USER NAME = gorengautab	DESIGNED -	REVISED -	STATE OF ILLINOIS DEPARTMENT OF TRANSPORTATION	EXISTING AND PROPOSED TYPICAL SECTIONS.HIBBARD RD U.S. RTE. 41 TO HILL RD./WINNETKA RD.	F.A.U. RTE.	SECTION	COUNTY	TOTAL SHEETS	SHEET NO.		
		DRAWN -	REVISED -			2807	1819RS-5	COOK	32	5		
	PLOT SCALE = 100.0000 ' / in.	CHECKED -	REVISED -			CONTRACT NO. 62F281						
	PLOT DATE = 3/19/2018	DATE -	REVISED -			SCALE:	SHEET	OF	SHEETS	STA.	TO STA.	ILLINOIS FED. AID PROJECT

MODEL Default
FILE Name: p:\w\1848\EDITION\TEC\Illinois\gov\PHUDOT\Documents\DOT Office\Bldg\1848\Roadway\Hibbard\1848\Hibbard.dgn



○ ADA RAMPS

USER NAME	= gorenautab	DESIGNED	-	REVISED	-
DRAWN	-	REVIS	-	REVIS	-
PLOT SCALE	= 100,0000 ' / in.	CHECKED	-	REVISED	-
PLOT DATE	= 3/19/2018	DATE	-	REVISED	-

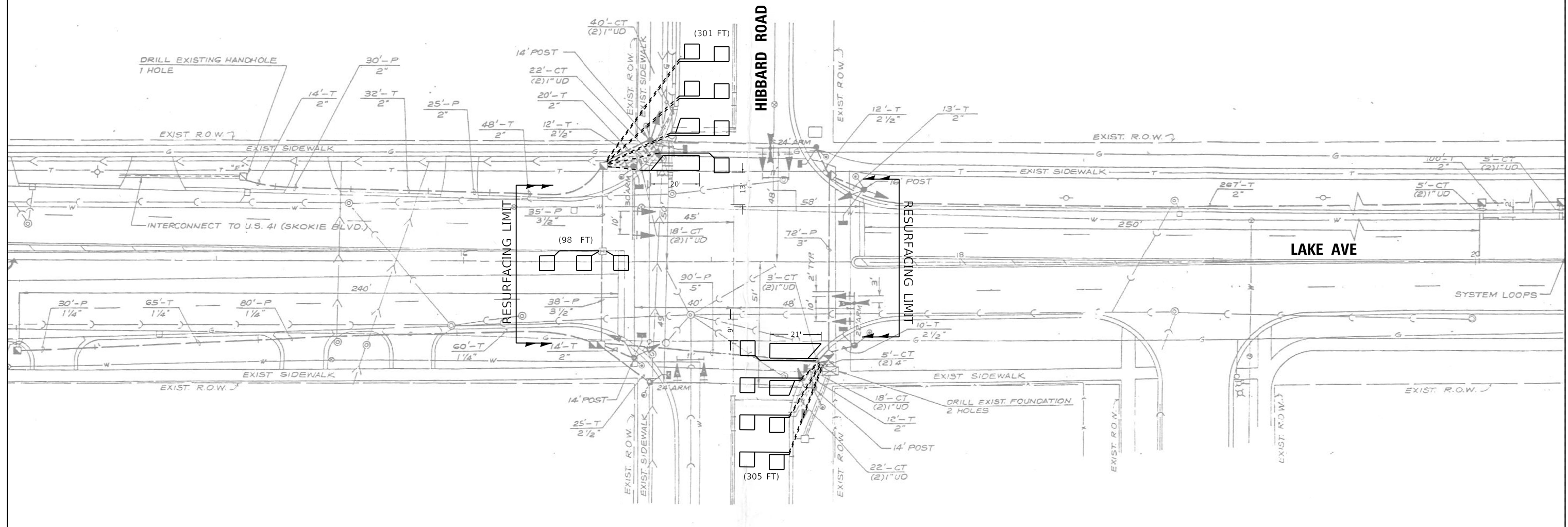
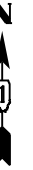
STATE OF ILLINOIS
DEPARTMENT OF TRANSPORTATION

ROADWAY PLAN HIBBARD RD.
U.S. RTE. 41 TO HILL RD./WINNETKA RD.

SCALE: 1"=50' SHEET OF SHEETS STA. 40+00 TO STA. 70+00

F.A.U. RTE.	SECTION	COUNTY	TOTAL SHEETS	SHEET NO.
2807	1819RS-5	COOK	32	7
CONTRACT NO. 62F82				
ILLINOIS FED. AID PROJECT				

1. WORK SHALL MEET THE REQUIREMENTS OF THE SPECIAL PROVISION, "DETECTOR LOOP REPLACEMENT AND/OR INSTALLATION (ROADWAY GRINDING, RESURFACING & PATCHING OPERATIONS).
2. THIS PLAN IS FOR THE SOLE PURPOSE OF DETECTOR LOOP REPLACEMENT.



CODE	ITEM	QUANTITY	UNIT
88600600	DETECTOR LOOP REPLACEMENT	703	FOOT

USER NAME = \$USERS\$	DESIGNED - RR	REVISED -
	DRAWN - RR	REVISED -
PLOT SCALE = \$SCALES\$	CHECKED - LP	REVISED -
PLOT DATE = \$DATES\$	DATE - 02/23/2018	REVISED -

**STATE OF ILLINOIS
DEPARTMENT OF TRANSPORTATION**

DETECTOR LOOP REPLACEMENT PLAN HIBBARD RD AT LAKE AVE

SCALE: 1"=20'	SHEET	OF	SHEETS	STA.	TO STA.
---------------	-------	----	--------	------	---------

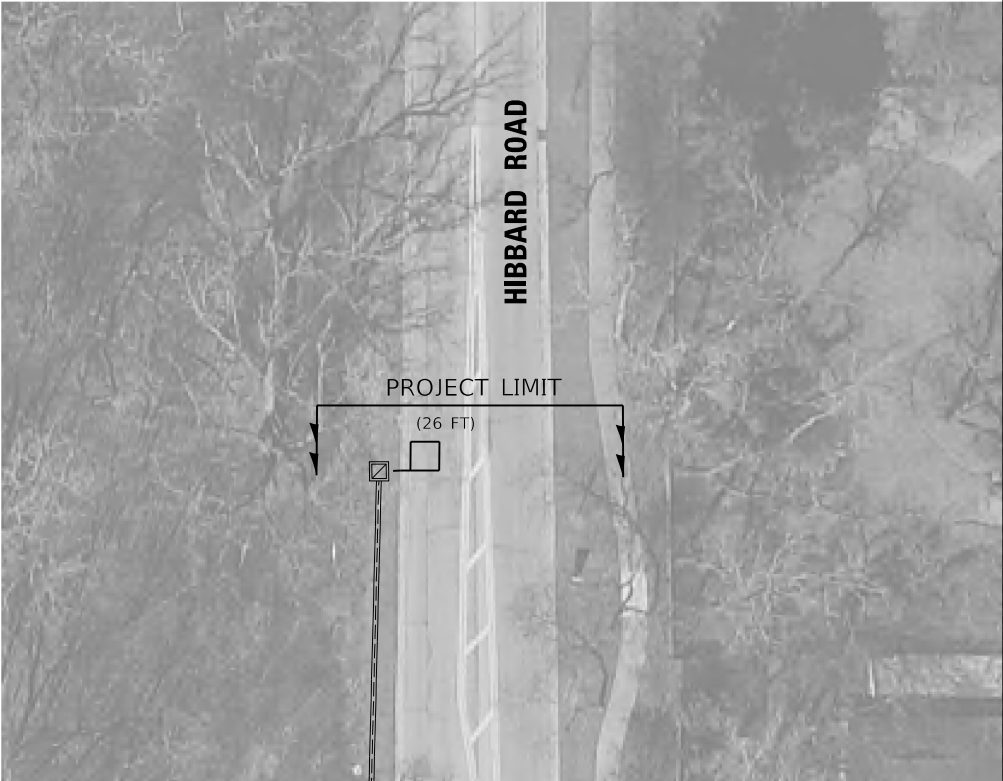
F.A.U. RTE.	SECTION	COUNTY	TOTAL SHEETS	SHEET NO.
2807	1819 RS-5	COOK	32	9
		CONTRACT NO. 62F82		
ILLINOIS		FED. AID PROJECT		

MODEL: \$MODELNAMES
FILE NAME: \$FILELS



NOTES:

- 1. MAGNETIC DETECTORS ARE TO BE ABANDONED.
- 2. ELECTRIC CABLES CONNECTING THE MAGNETIC LOOPS TO THE CONTROL CABINET ARE TO BE REMOVED FROM NON-ABANDONED EXISTING CONDUITS.



MATCHLINE A

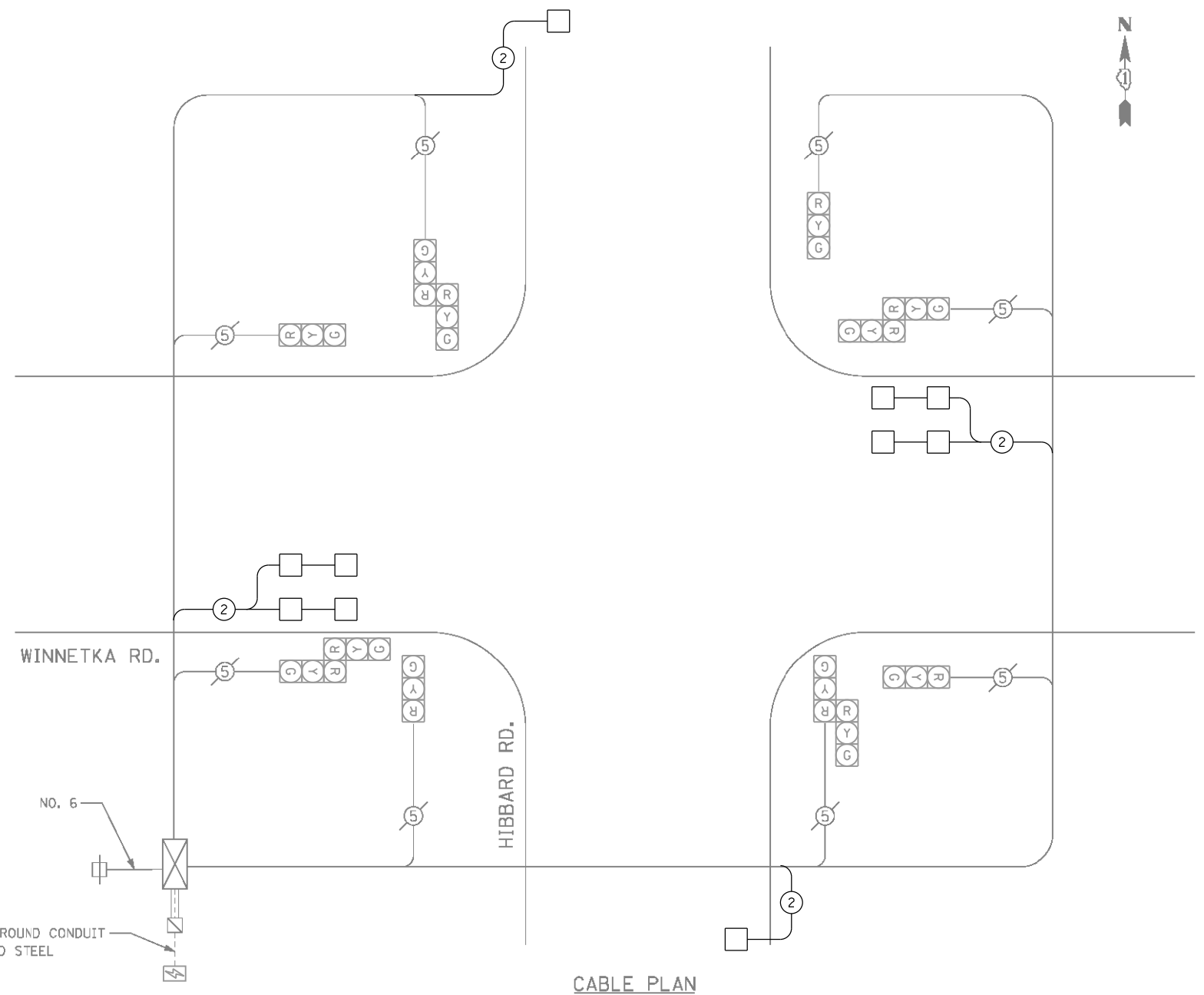
MODEL: \$MODELNAME\$
FILE: \$MODEL\$.STL

USER NAME = \$USERS\$	DESIGNED - RR	REVISED -
	DRAWN - RR	REVISED -
PLOT SCALE = \$SCALE\$	CHECKED - LP	REVISED -
PLOT DATE = \$DATE\$	DATE - 03/13/2018	REVISED -

STATE OF ILLINOIS
DEPARTMENT OF TRANSPORTATION

DETECTOR LOOP REPLACEMENT PLAN HIBBARD RD AT WINNETKA ROAD			
SCALE: 1"=20'	SHEET	OF	SHEETS
	STA.	TO	STA.

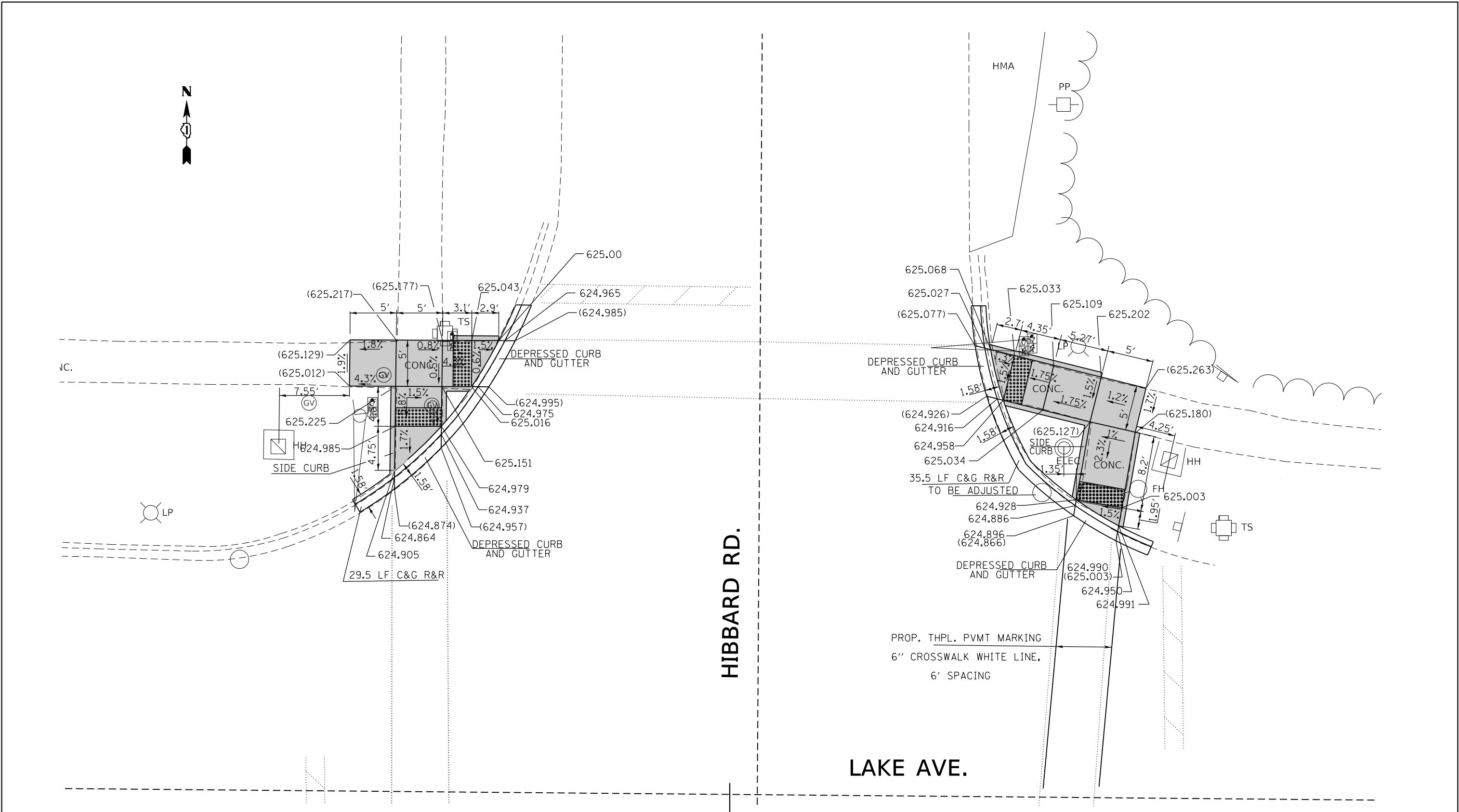
F.A.U. RTE.	SECTION	COUNTY	TOTAL SHEETS	SHEET NO.
2807	1819 RS-5	COOK	32	10
CONTRACT NO. 62F82				
		ILLINOIS	FED. AID PROJECT	



ITEM	ITEM DESCRIPTION	UNITS	TOTAL QTY.
85000200	MAINTENANCE OF EXISTING TRAFFIC SIGNAL INSTALLATION	EACH	1
87301305	ELECTRIC CABLE IN CONDUIT, LEAD-IN, NO. 14 1 PAIR	FOOT	618
88500100	INDUCTIVE LOOP DETECTOR	EACH	4
88600100	DETECTOR LOOP, TYPE I	FOOT	440
89502200	MODIFY EXISTING CONTROLLER	EACH	1
89502210	MODIFY EXISTING CONTROLLER CABINET	EACH	1
89502300	REMOVE ELECTRIC CABLE FROM CONDUIT	FOOT	618

**STATE OF ILLINOIS
DEPARTMENT OF TRANSPORTATION**

F.A.U. RTE.	SECTION	COUNTY	TOTAL SHEETS	SHEET NO.
2807	1819 RS-5	COOK	32	11
		CONTRACT NO. 62F82		
ILLINOIS		FED. AID PROJECT		



REFERENCE BENCHMARK ELEV 625.579

BENCHMARK : CONTROL BOX AT S. WEST CORNER OF TOP SLAB

LOCATION : S. EAST CORNER OF LAKE AVE AND HIBBARD RD

LEGEND

xx.xx'

EXISTING LENGTH

==

PROPOSED SIDE CURB

()

EXISTING ELEVATION/SLOPE



PROPOSED SIDEWALK



DETECTABLE WARNINGS



SIDEWALK REMOVAL
REPLACE W/TOPSOIL & SOD

REFERENCE BENCHMARK ELEV 625.579

BENCHMARK : CONTROL BOX AT S. WEST CORNER OF TOP SLAB

LOCATION : S. EAST CORNER OF LAKE AVE AND HIBBARD RD

FILE NAME =	USER NAME = gorengautab	DESIGNED - PLP 10/04/2016	REVISED - PLP 11/07/2016
p:\1\1084EBID\INTEG\Illinois.gov\PWIDOT\Documents\IDOT Offices\District 1\Projects\DI218\BROWN\Design\PLP\218-10-04-2016		REVISED - PLP 08/11/2017	REVISED - PLP 09/14/2017
Default	PLOT SCALE = 10.0000' / in.	CHECKED -	REVISED - PLP 01/10/2018
	PLOT DATE = 3/19/2018	DATE -	

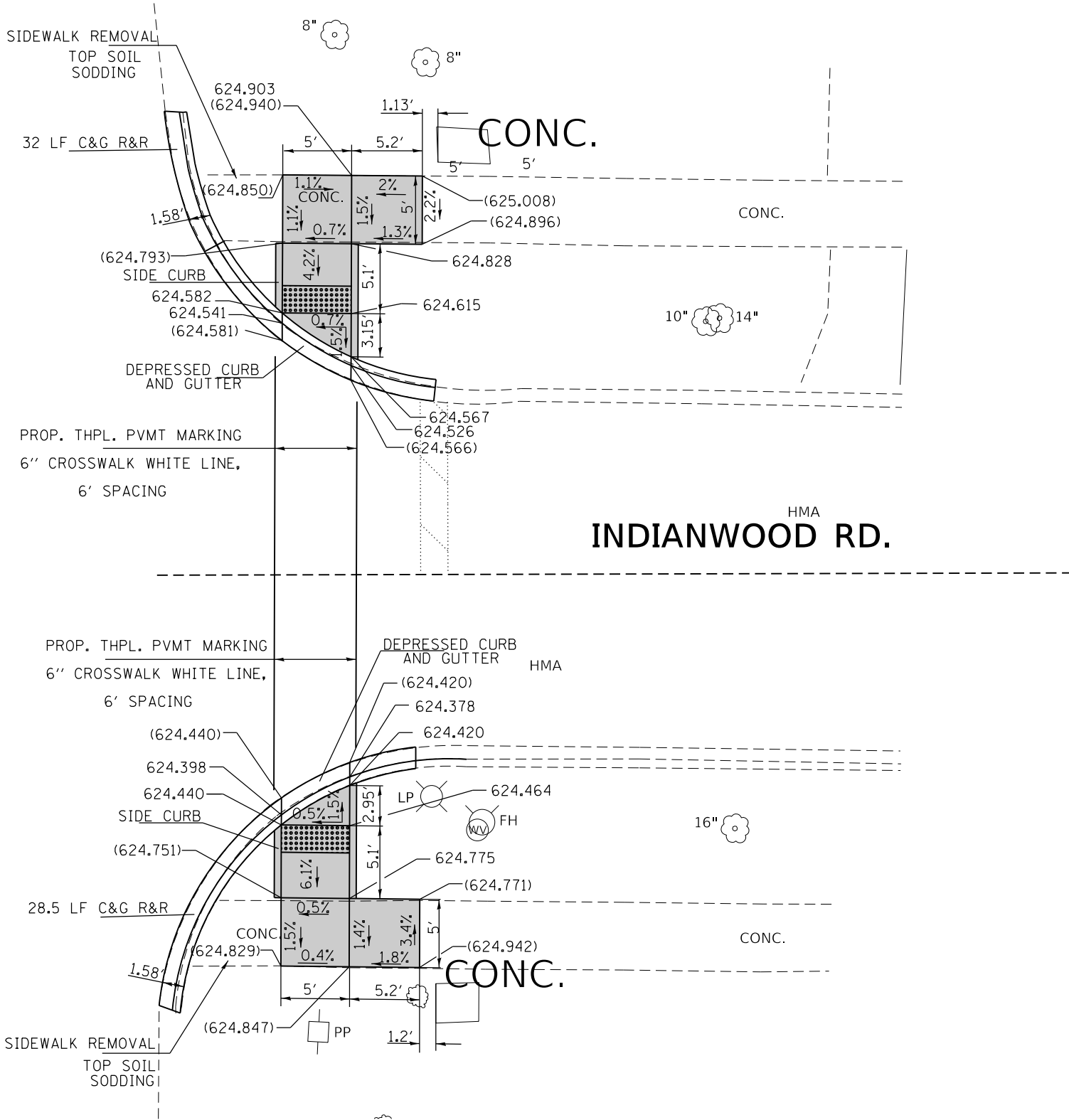
STATE OF ILLINOIS
DEPARTMENT OF TRANSPORTATION

SIDEWALK DETAIL PLAN
HIBBARD ROAD - HILL RD / WINNETKA RD TO US 41

SCALE: SHEET OF SHEETS STA. TO STA.

F.A.U. RTE.	SECTION	COUNTY	TOTAL SHEETS	SHEET NO.
2807	1819RS-5	COOK	32	12
CONTRACT NO. 62F82				
ILLINOIS FED. AID PROJECT				

HIBBARD RD.



LEGEND

xx.xx'

EXISTING LENGTH

=====

PROPOSED SIDE CURB

()

EXISTING ELEVATION/SLOPE



PROPOSED SIDEWALK



DETECTABLE WARNINGS



SIDEWALK REMOVAL
REPLACE W/TOPSOIL & SOD

REFERENCE BENCHMARK ELEV 624.5597

BENCHMARK : SOUTH BOLT OF FIRE HYDRANT

LOCATION : SOUTH EAST CORNER OF INDIANWOOD RD AND HIBBARD RD

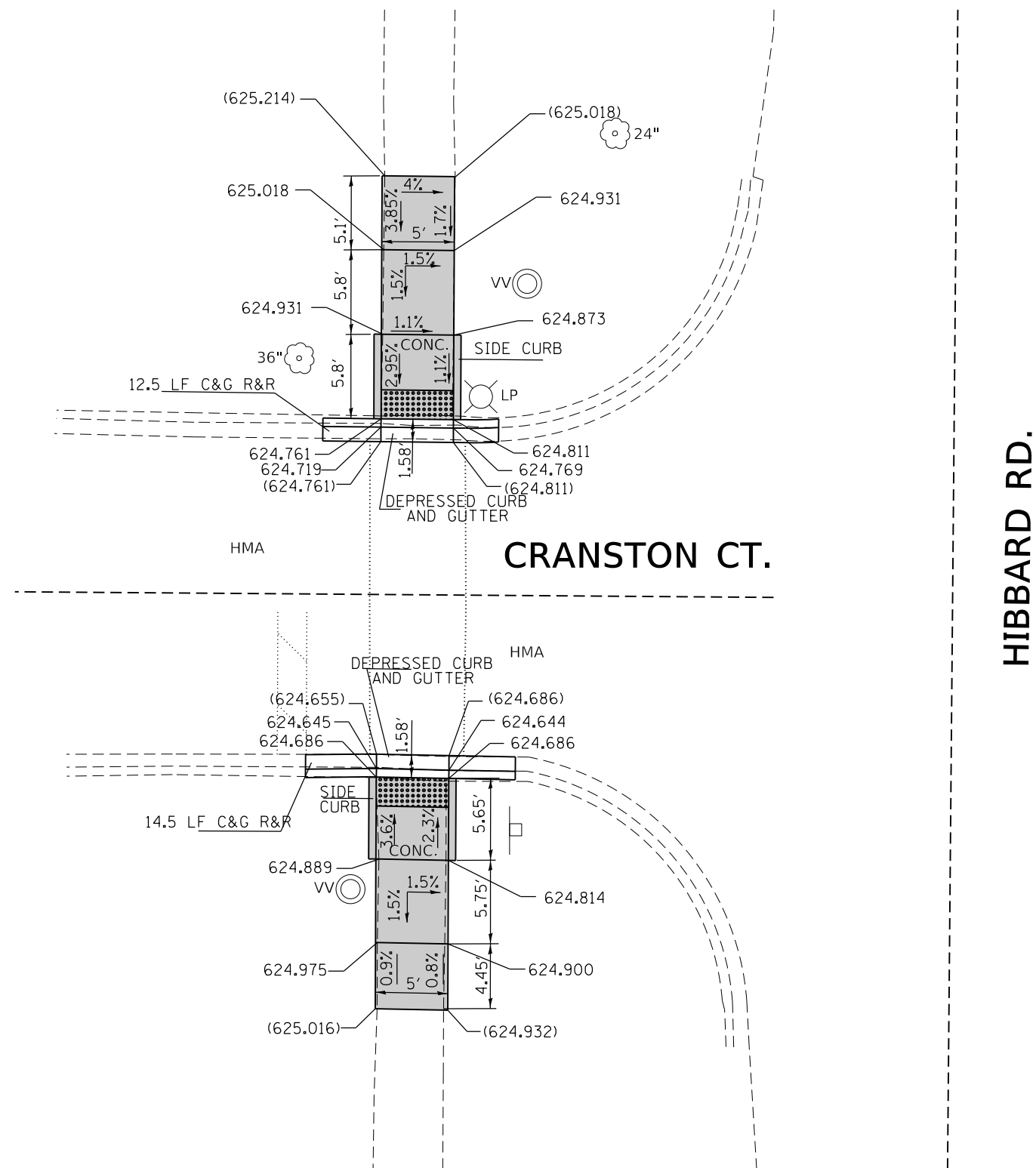
FILE NAME =	USER NAME = gorengautab	DESIGNED - PLP 10/04/2016	REVISED - PLP 11/07/2016
p:\11\084EBID\INTEG\Illinois.gov\PWIDOT\Documents\DOT Offices\District 1\Projects\DI218\BROWN\Design\PLP\218-10-04-2016		REVIEWED - PLP 08/11/2017	REVISED - PLP 08/11/2017
Default	PLOT SCALE = 10.0000' / in.	CHECKED -	REVISED - PLP 09/14/2017
	PLOT DATE = 3/19/2018	DATE -	REVISED - PLP 01/10/2018

STATE OF ILLINOIS
DEPARTMENT OF TRANSPORTATION

SIDEWALK DETAIL PLAN
HIBBARD ROAD - HILL RD /WINNETKA RD TO US 41

SCALE: SHEET OF SHEETS STA. TO STA.

F.A.U. RTE.	SECTION	COUNTY	TOTAL SHEETS	SHEET NO.
2807	1819RS-5	COOK	32	14
CONTRACT NO. 62F82				
ILLINOIS FED. AID PROJECT				



REFERENCE BENCHMARK ELEV 624.5597

BENCHMARK : SOUTH BOLT OF FIRE HYDRANT

LOCATION : SOUTH EAST CORNER OF INDIANWOOD RD AND HIBBARD RD

LEGEND

xx.xx'

EXISTING LENGTH

=====

PROPOSED SIDE CURB

()

EXISTING ELEVATION/SLOPE



PROPOSED SIDEWALK



DETECTABLE WARNINGS



SIDEWALK REMOVAL
REPLACE W/TOPSOIL & SOD

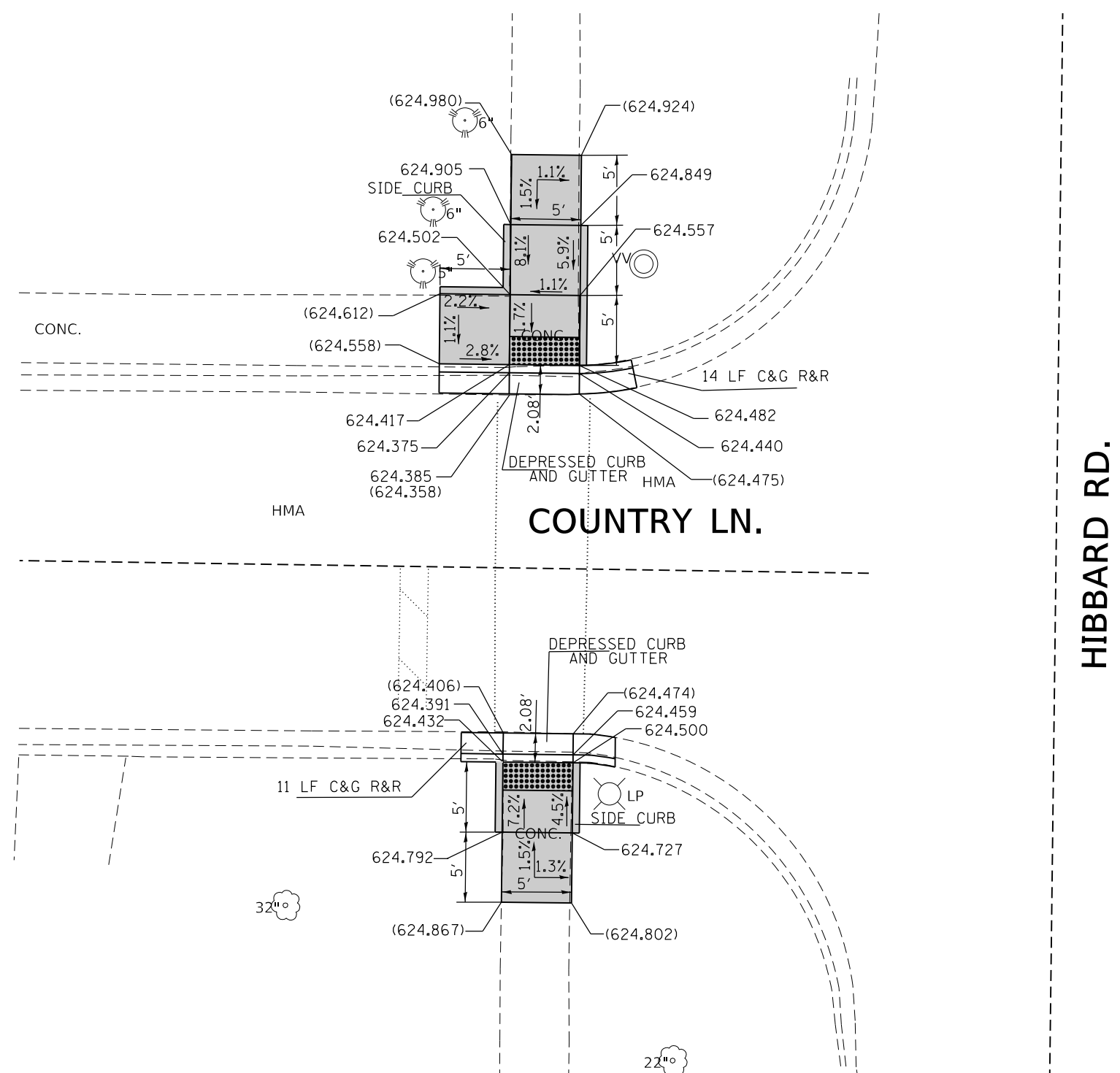
FILE NAME =	USER NAME = gorengautab	DESIGNED - PLP 10/04/2016	REVISED - PLP 11/07/2016
p:\1\1084EBID\INTEG\Illinois.gov\PWIDOT\Documents\IDOT Offices\District 1\Projects\DI218\BROWN\Design\PLP\218-10-04-2016		DESIGNED - PLP 10/04/2016	REVISED - PLP 08/11/2017
		CHECKED -	REVISED - PLP 09/14/2017
Default	PLOT DATE = 3/19/2018	DATE -	REVISED - PLP 01/10/2018

STATE OF ILLINOIS
DEPARTMENT OF TRANSPORTATION

SIDEWALK DETAIL PLAN
HIBBARD ROAD - HILL RD /WINNETKA RD TO US 41

SCALE: SHEET OF SHEETS STA. TO STA.

F.A.U. RTE.	SECTION	COUNTY	TOTAL SHEETS	SHEET NO.
2807	1819RS-5	COOK	32	15
CONTRACT NO. 62F82				
ILLINOIS FED. AID PROJECT				



REFERENCE BENCHMARK ELEV 624.871

BENCHMARK : SOUTHEAST BOLT OF FIRE HYDRANT

LOCATION : EAST TO COUNTRY LN AND HIBBARD

LEGEND

xx.xx'

EXISTING LENGTH

=====

PROPOSED SIDE CURB

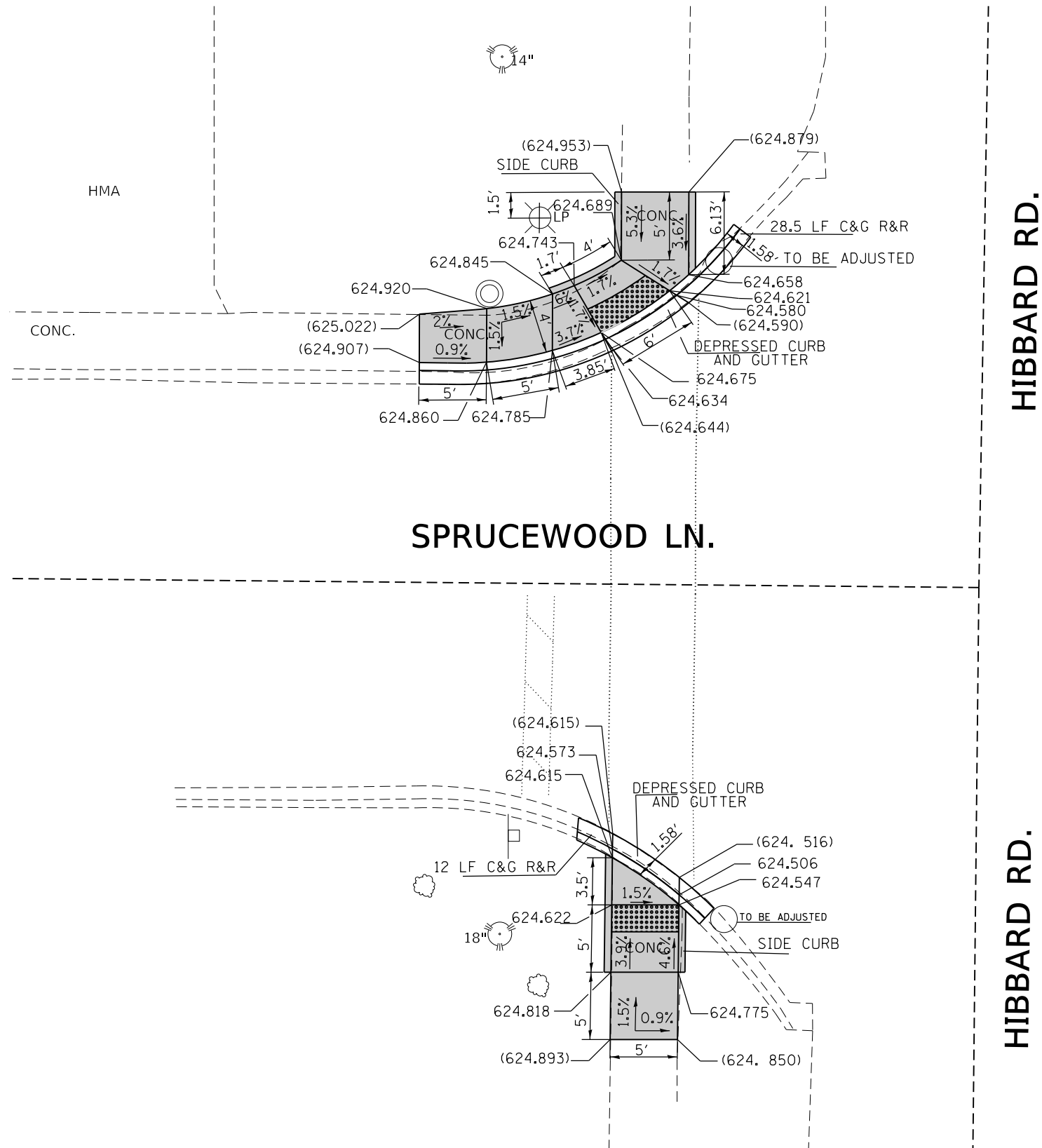
()

EXISTING ELEVATION/SLOPE

PROPOSED SIDEWALK

DETECTABLE WARNINGS

SIDEWALK REMOVAL
REPLACE W/TOPSOIL & SOD



REFERENCE BENCHMARK ELEV 627.670

BENCHMARK : BOLT OF FIRE HYDRANT

LOCATION : S. EAST CORNER OF HIBBARD RD AND ILLINOIS RD

LEGEND

xx.xx'

EXISTING LENGTH

==

PROPOSED SIDE CURB

()

EXISTING ELEVATION/SLOPE



PROPOSED SIDEWALK



DETECTABLE WARNINGS



SIDEWALK REMOVAL
REPLACE W/TOPSOIL & SOD

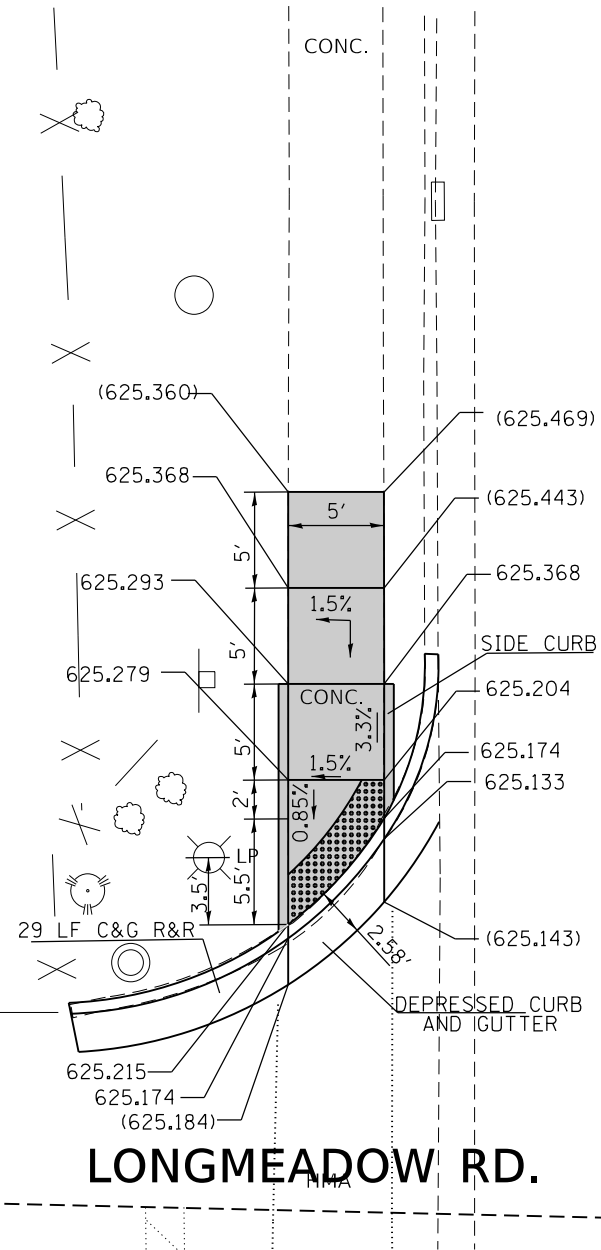
FILE NAME =	USER NAME = gorengautab	DESIGNED - PLP 10/04/2016	REVISED - PLP 11/07/2016
p:\1\1084EBIDINTEG\Illinois.gov\PWIDOT\Documents\DOT Offices\District 1\Projects\DI218\BROWN\Design\PLP\218-10-04-2016		REVISOR - PLP 08/11/2017	REVISED - PLP 08/11/2017
Default	PLOT SCALE = 10.0000' / in.	CHECKED -	REVISED - PLP 09/14/2017
	PLOT DATE = 3/19/2018	DATE -	REVISED - PLP 01/10/2018

STATE OF ILLINOIS
DEPARTMENT OF TRANSPORTATION

SIDEWALK DETAIL PLAN
HIBBARD ROAD - HILL RD /WINNETKA RD TO US 41

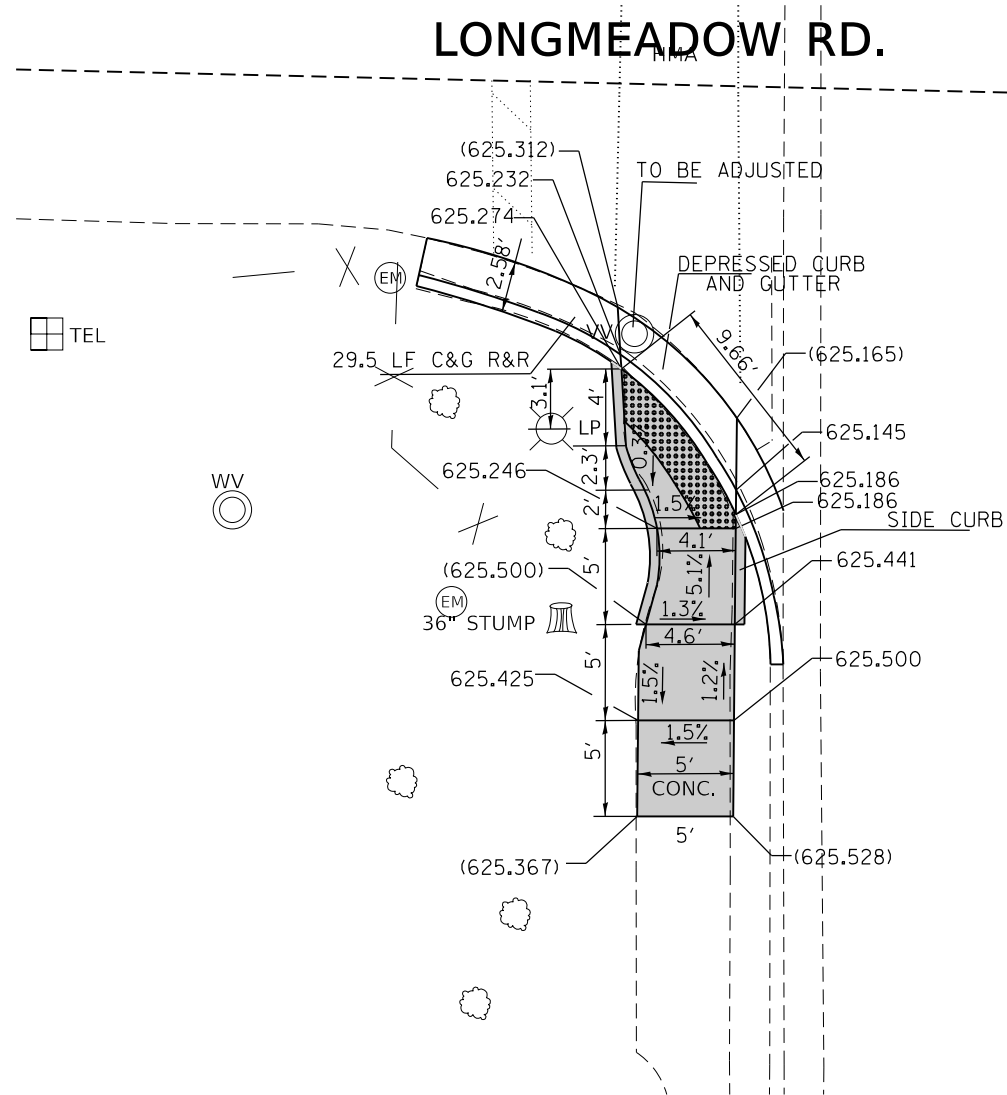
SCALE: SHEET OF SHEETS STA. TO STA.

F.A.U. RTE.	SECTION	COUNTY	TOTAL SHEETS	SHEET NO.
2807	1819RS-5	COOK	32	17
CONTRACT NO. 62F82				
ILLINOIS FED. AID PROJECT				



HIBBARD RD.

LONGMEADOW RD.



HIBBARD RD.

LEGEND

xx.xx'

EXISTING LENGTH

=====

PROPOSED SIDE CURB

()

EXISTING ELEVATION/SLOPE



PROPOSED SIDEWALK



DETECTABLE WARNINGS



SIDEWALK REMOVAL
REPLACE W/TOPSOIL & SOD

REFERENCE BENCHMARK ELEV 627.390

BENCHMARK : BOLT WITH ARROW IN FIRE HYDRANT

LOCATION : EAST SIDE OF HIBBARD RD, ± 75 FT NORTH OF LONGMEADOW RD

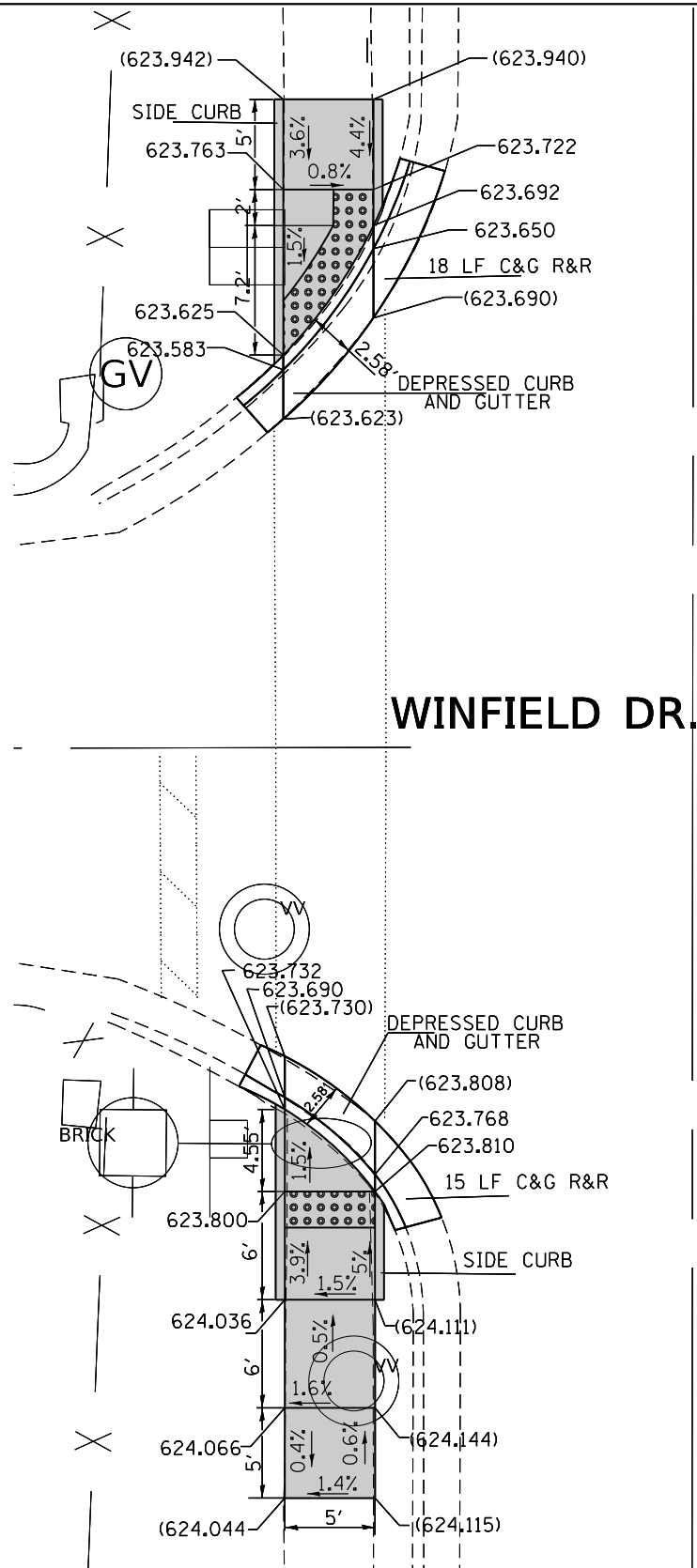
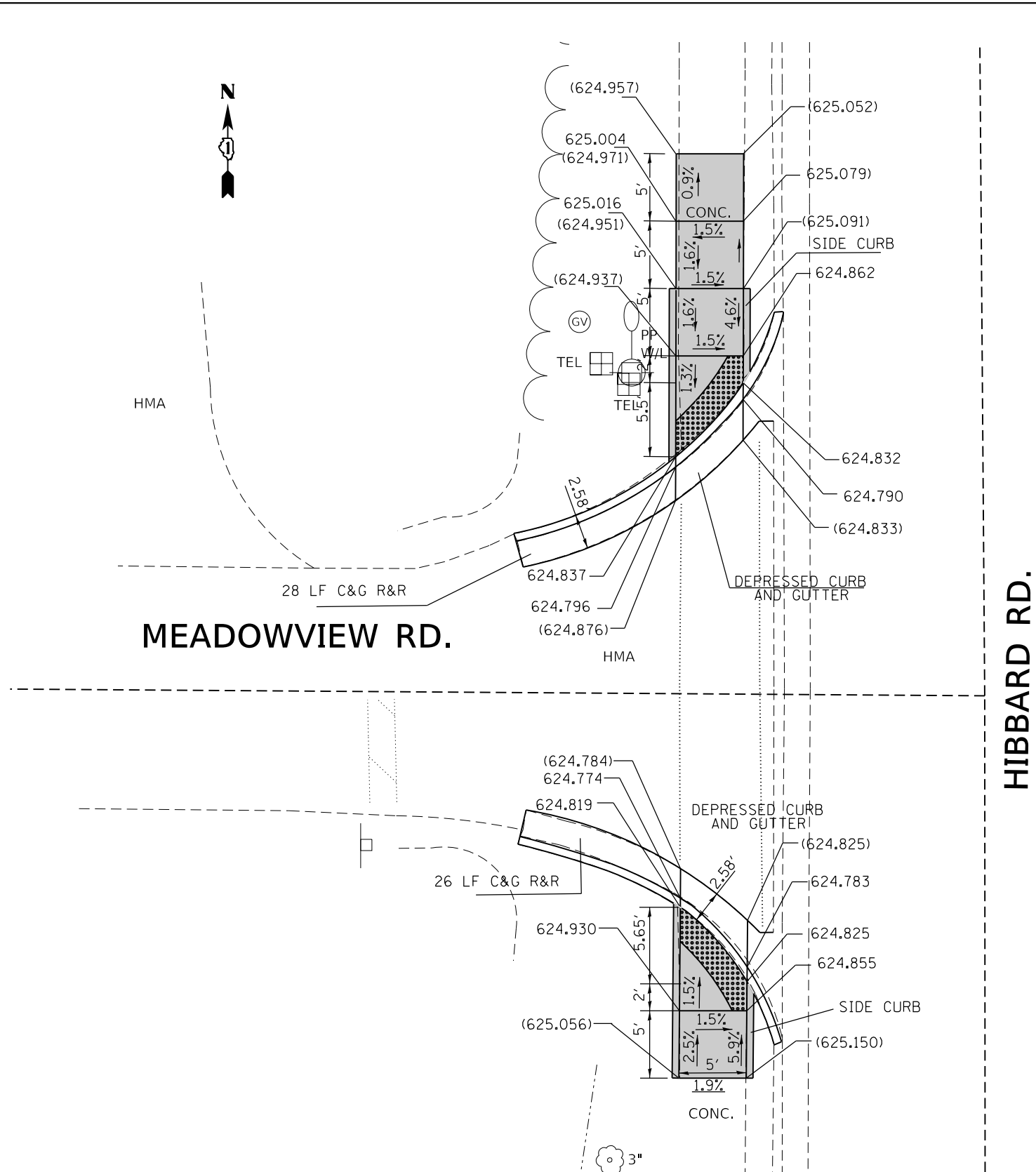
FILE NAME =	USER NAME = gorengautab	DESIGNED - PLP 10/04/2016	REVISED - PLP 11/07/2016
p:\1\1084EBID\INTEG\Illinois.gov\PWIDOT\Documents\DOT Offices\District 1\Projects\01218\1084EBID\Design\PLP\1084EBID-10-04-2016.dwg		DESIGNED - PLP 10/04/2016	REVISED - PLP 08/11/2017
Default	PLOT SCALE = 10.0000' / in.	CHECKED -	REVISED - PLP 09/14/2017
	PLOT DATE = 3/20/2018	DATE -	REVISED - PLP 01/10/2018

STATE OF ILLINOIS
DEPARTMENT OF TRANSPORTATION

SIDEWALK DETAIL PLAN
HIBBARD ROAD - HILL RD /WINNETKA RD TO US 41

SCALE: SHEET OF SHEETS STA. TO STA.

F.A.U. RTE.	SECTION	COUNTY	TOTAL SHEETS	SHEET NO.
2807	1819RS-5	COOK	32	18
CONTRACT NO. 62F82				
ILLINOIS FED. AID PROJECT				

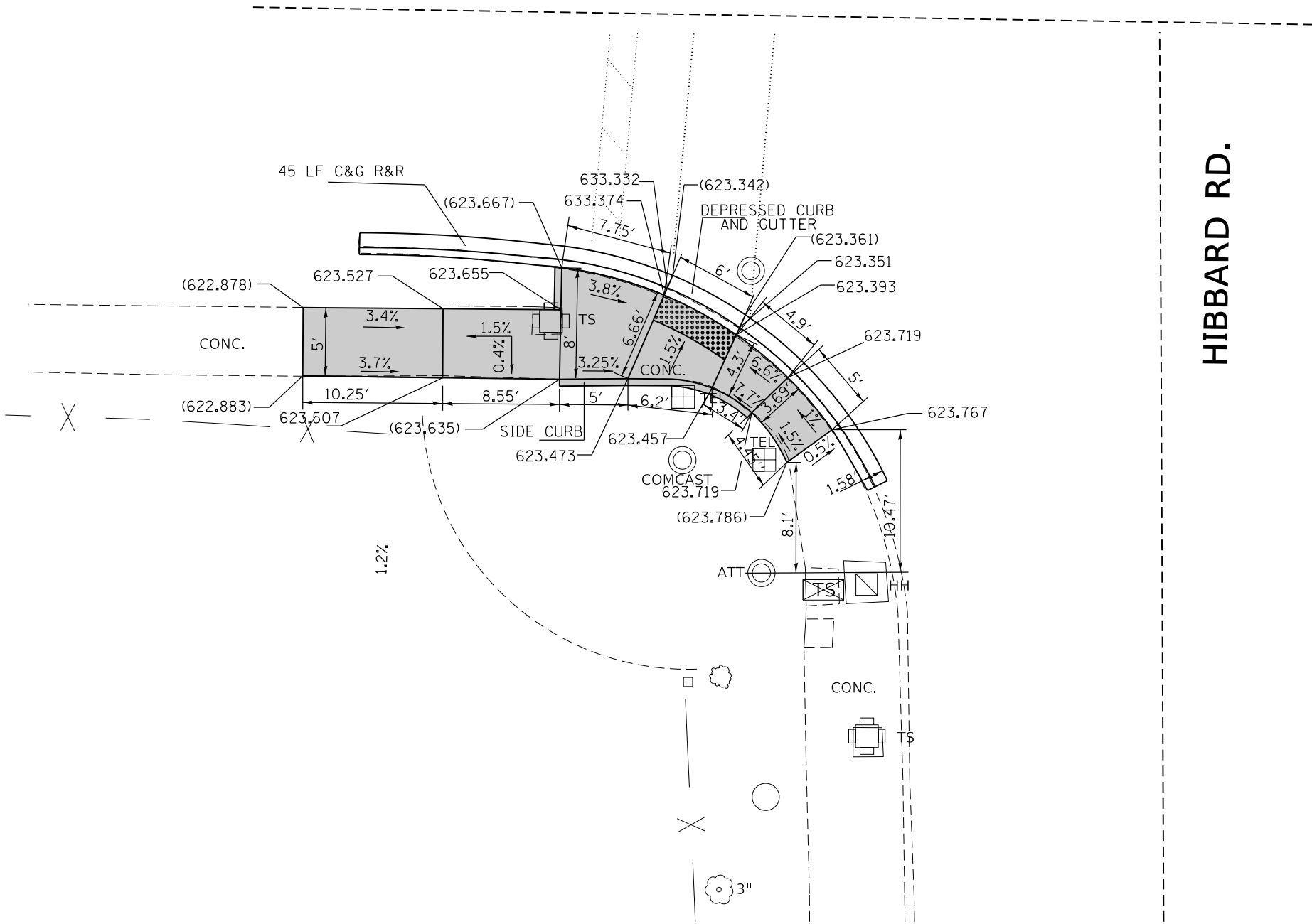


REFERENCE BENCHMARK ELEV 627.970				LEGEND				REFERENCE BENCHMARK ELEV 624.513			
BENCHMARK : BOLT WITH ARROW IN FIRE HYDRANT				<div>xx.xx'</div> EXISTING LENGTH				BENCHMARK : WEST BOLT IN FIRE HYDRANT			
LOCATION : EAST SIDE OF HIBBARD RD, ± 110 FT SOUTH OF MEADOWVIEW RD				<div></div> PROPOSED SIDE CURB				LOCATION : NORTHWEST CORNER OF WINFIELD DR			
				<div>()</div> EXISTING ELEVATION/SLOPE							
				<div></div> PROPOSED SIDEWALK							
				<div></div> DETECTABLE WARNINGS							
				<div></div> SIDEWALK REMOVAL REPLACE W/TOPSOIL & SOD							
FILE NAME =				DESIGNED - PLP 10/04/2016				F.A.U. RTE.			
USER NAME = gorengautab				REVISED - PLP 11/07/2016				SECTION			
DESIGNED - PLP 10/04/2016				REVISED - PLP 08/11/2017				COUNTY			
PLOT SCALE = 10.0000' / in.				REVISED - PLP 09/14/2017				TOTAL SHEETS			
PLOT DATE = 4/19/2018				REVISED - PLP 01/10/2018				SHEET NO.			
DATE -								CONTRACT NO. 62F82			
Default								ILLINOIS FED. AID PROJECT			
				STATE OF ILLINOIS DEPARTMENT OF TRANSPORTATION				SIDWALK DETAIL PLAN HIBBARD ROAD - HILL RD /WINNETKA RD TO US 41			
				SCALE:				SHEET OF SHEETS STA. TO STA.			

WINNETKA RD.



HIBBARD RD.



REFERENCE BENCHMARK ELEV 623.930
BENCHMARK : CONCRETE BASE OF CONTROL BOX
LOCATION : S. WEST CORNER OF HIBBARD RD AND WINNETKA RD

LEGEND

xx.xx'

EXISTING LENGTH

=====

PROPOSED SIDE CURB

()

EXISTING ELEVATION/SLOPE



PROPOSED SIDEWALK



DETECTABLE WARNINGS



SIDEWALK REMOVAL
REPLACE W/TOPSOIL & SOD

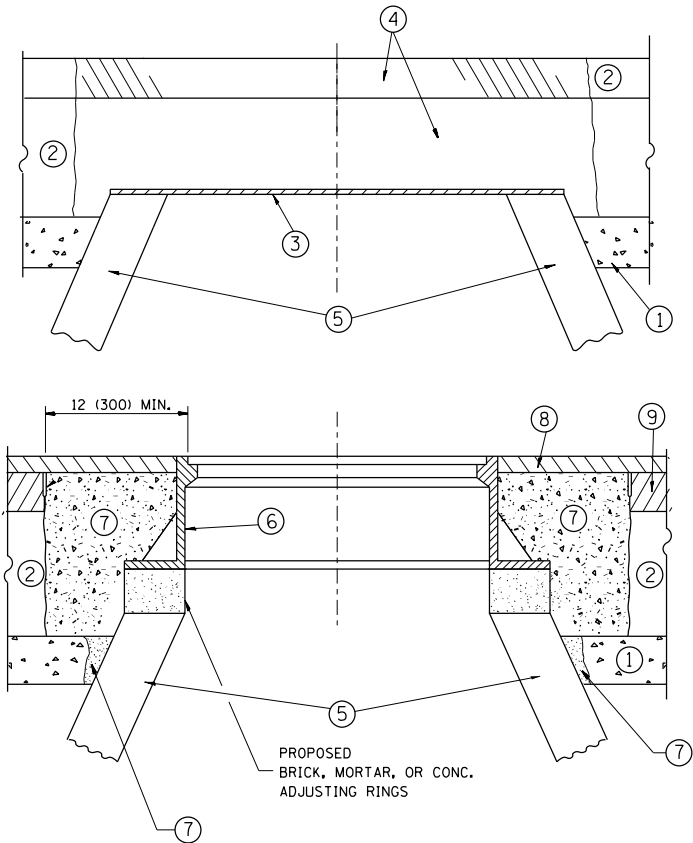
FILE NAME =	USER NAME = gorengautab	DESIGNED - PLP 10/04/2016	REVISED - PLP 11/07/2016
p:\11\084EBID\INTEG\Illinois.gov\PWIDOT\Documents\IDOT Offices\District 1\Projects\DI218\BROWN\Design\PLP\218-10-04-2016		DESIGNED - PLP 10/04/2016	REVISED - PLP 08/11/2017
Default	PLOT SCALE = 10.0000' / in.	CHECKED -	REVISED - PLP 09/14/2017
	PLOT DATE = 4/20/2018	DATE -	REVISED - PLP 01/10/2018

STATE OF ILLINOIS
DEPARTMENT OF TRANSPORTATION

SIDEWALK DETAIL PLAN
HIBBARD ROAD - HILL RD /WINNETKA RD TO US 41

SCALE: SHEET OF SHEETS STA. TO STA.

F.A.U. RTE.	SECTION	COUNTY	TOTAL SHEETS	SHEET NO.
2807	1819RS-5	COOK	32	20
CONTRACT NO. 62F82				
ILLINOIS FED. AID PROJECT				



NOTES:

EXISTING BROKEN FRAMES AND LIDS SHALL BE REMOVED AND DISPOSED OF BY THE CONTRACTOR AND SHALL BE REPLACED AS DIRECTED BY THE ENGINEER. REPLACEMENT FRAMES AND LIDS WILL BE PAID FOR IN ACCORDANCE WITH ARTICLE 109.04 OF THE STANDARD SPECIFICATIONS UNLESS A SEPARATE PAY ITEM HAS BEEN PROVIDED.

IF THE EXISTING LIDS ARE OPEN, THE FRAME WILL BE ADJUSTED TO THE ELEVATION OF THE MILLED PAVEMENT SURFACE PRIOR TO THE MILLING OPERATION. THE FRAME WILL NOT BE REMOVED AND COVERED BY THE METAL PLATE.

CITY OF CHICAGO CASTINGS ARE THE PROPERTY OF THE CITY AND THE CONTRACTOR SHALL NOTIFY THE CITY FOR REMOVAL AND DISPOSITION OF THE CASTINGS.

THE METAL PLATE USED TO COVER THE STRUCTURE SHALL REMAIN THE PROPERTY OF THE CONTRACTOR.

WHEN STRUCTURES ARE TO BE ADJUSTED OR RECONSTRUCTED, THE LOWERING AND RAISING OF THE FRAMES AND LIDS WILL NOT BE PAID FOR SEPARATELY BUT WILL BE INCLUDED IN THE COST OF THE CORRESPONDING PAY ITEM.

CONSTRUCTION PROCEDURES

STAGE 1 (BEFORE PAVEMENT MILLING)

- A) REMOVE A MINIMUM OF 12 (300) OF THE PAVEMENT FROM AROUND THE STRUCTURE.
B) REMOVE THE EXISTING FRAME AND LID FROM THE STRUCTURE.
C) COVER THE STRUCTURE OPENING WITH A 36 (900) DIAMETER METAL PLATE.
D) BACKFILL WITH CRUSHED STONE AND A MINIMUM 1½ (40) THICK HMA SURFACE MIX APPROVED BY THE ENGINEER.

STAGE 2 (AFTER PAVEMENT MILLING)

- A) REMOVE THE HMA SURFACE MIX AND CRUSHED STONE.
B) INSTALL THE FRAME AND LID; ADJUST THE FRAME TO ITS FINAL SURFACE ELEVATION.
C) THE SURROUNDING SPACE SHALL BE FILLED WITH CLASS PP-1* CONCRETE TO THE ELEVATION OF THE SURFACE OF THE EXISTING BASE COURSE OR THE BINDER COURSE.

* UNLESS OTHERWISE SPECIFIED IN THE PLANS.

THE PROCEDURE EXPLAINED ABOVE SHALL CONFORM TO THE APPLICABLE PORTIONS OF SECTIONS 353, 406, 602, AND 603 OF THE STANDARD SPECIFICATIONS EXCEPT THAT "THE CONTRACTOR SHALL ADJUST THE STRUCTURES TO THE FINISHED PAVEMENT ELEVATION NO MORE THAN 5 CALENDAR DAYS PRIOR TO PLACEMENT OF THE FINAL LIFT OF SURFACE UNLESS APPROVED BY THE ENGINEER."

LEGEND

- ① SUB-BASE GRANULAR MATERIAL
② EXISTING PAVEMENT
③ 36 (900) DIAMETER METAL PLATE
④ PROPOSED CRUSHED STONE AND HMA SURFACE MIX
⑤ EXISTING STRUCTURE
⑥ FRAME AND LID (SEE NOTES)
⑦ CLASS PP-1* CONCRETE
⑧ PROPOSED HMA SURFACE COURSE
⑨ PROPOSED HMA BINDER COURSE

LOCATION OF STRUCTURES:

THE CONTRACTOR WILL BE REQUIRED TO KEEP A RECORD OF THE LOCATIONS OF THE BURIED STRUCTURES ACCORDING TO THE STATION AND DISTANCE LEFT OR RIGHT OF THE CENTERLINE OF PAVEMENT. UPON COMPLETION OF THE WORK, THE CONTRACTOR WILL DELIVER THE RECORD TO THE ENGINEER.

BASIS OF PAYMENT:

REMOVING FRAMES AND LIDS ON DRAINAGE AND UTILITY STRUCTURES IN THE PAVEMENT PRIOR TO MILLING, AND ADJUSTING TO FINAL GRADE PRIOR TO PLACING THE SURFACE COURSE, WILL BE PAID FOR AT THE CONTRACT UNIT PRICE EACH FOR "FRAMES AND LIDS TO BE ADJUSTED (SPECIAL)."

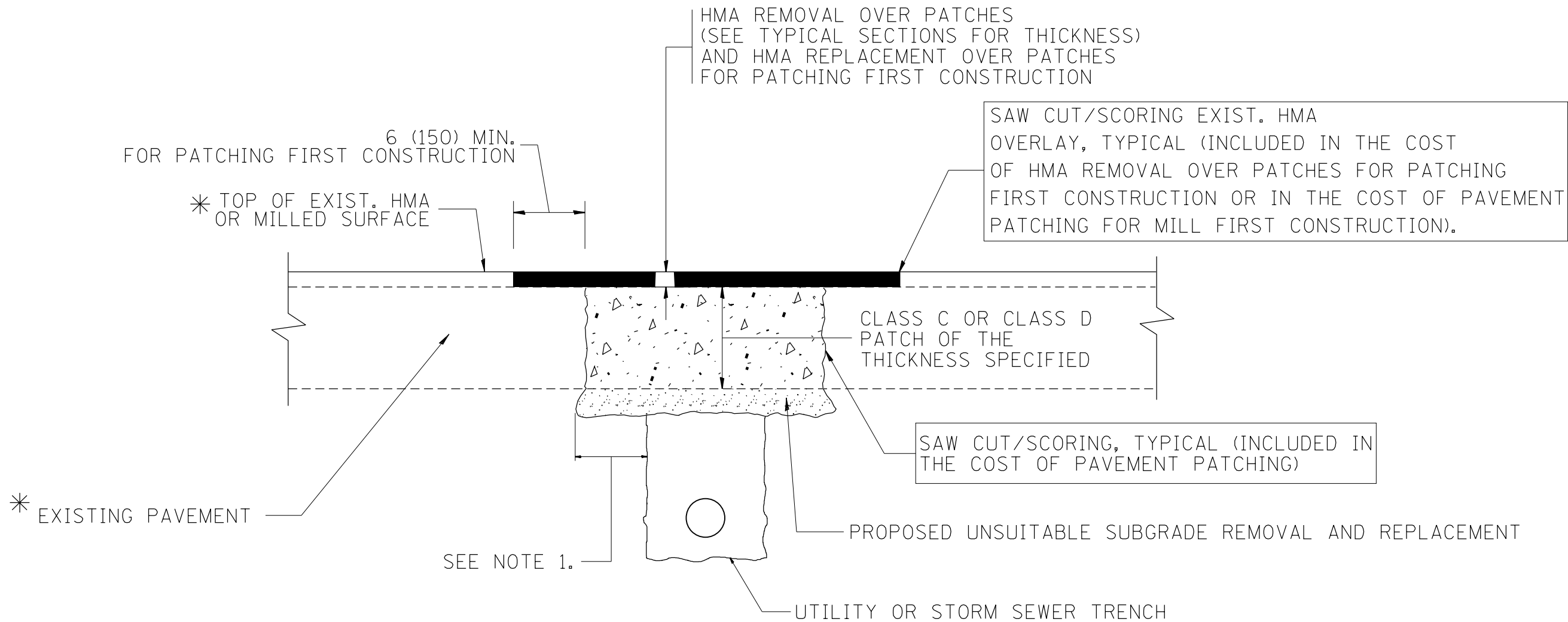
THIS WORK WILL NOT BE PAID FOR WHEN DRAINAGE AND UTILITY STRUCTURES ARE SPECIFIED FOR PAYMENT AS STRUCTURE RECONSTRUCTION.

NEW FRAMES AND LIDS, WHEN SPECIFIED, WILL BE PAID FOR SEPARATELY.

DETAILS FOR FRAMES AND LIDS ADJUSTMENT WITH MILLING

ALL DIMENSIONS ARE IN INCHES (MILLIMETERS) UNLESS OTHERWISE SHOWN

FILE NAME =	USER NAME = gorengautab	DESIGNED - R. SHAH	REVISED - R. WIEDEMAN 05-14-04	STATE OF ILLINOIS DEPARTMENT OF TRANSPORTATION	DETAILS FOR FRAMES AND LIDS ADJUSTMENT WITH MILLING			F.A.U. RTE.	SECTION	COUNTY	TOTAL SHEETS	SHEET NO.
p:\1\084EBIDINTEG\illinois.gov\PIDOT\Documents\IDOT Offices\District 1\Projects\DI2121\BROWN\Design\DistStd.dgn			REVISED - R. BORO 01-01-07					2807	1819 RS-5	COOK	32	22
	PLOT SCALE = 100.0000' / in.	CHECKED -	REVISED - R. BORO 03-09-11		BD600-03 (BD-8)			CONTRACT NO. 62F82				
	PLOT DATE = 3/19/2018	DATE - 10-25-94	REVISED - R. BORO 12-06-11		SCALE: NONE	SHEET NO. 1 OF 1 SHEETS	STA. TO STA.	FED. ROAD DIST. NO. 1 ILLINOIS FED. AID PROJECT				



* SEE TYPICAL SECTIONS FOR THICKNESS AND MATERIALS

NOTES:

1. THE WIDTH OF THE FULL DEPTH PATCH OVER A TRENCH SHALL BE 12 (300) WIDER ON EACH SIDE OF THE TRENCH.
2. FOR METHOD OF MEASUREMENT AND BASIS OF PAYMENT, SEE RECURRING SPECIAL PROVISION "PATCHING WITH HOT-MIX ASPHALT OVERLAY REMOVAL".

SEQUENCE OF CONSTRUCTION (PATCHING FIRST)

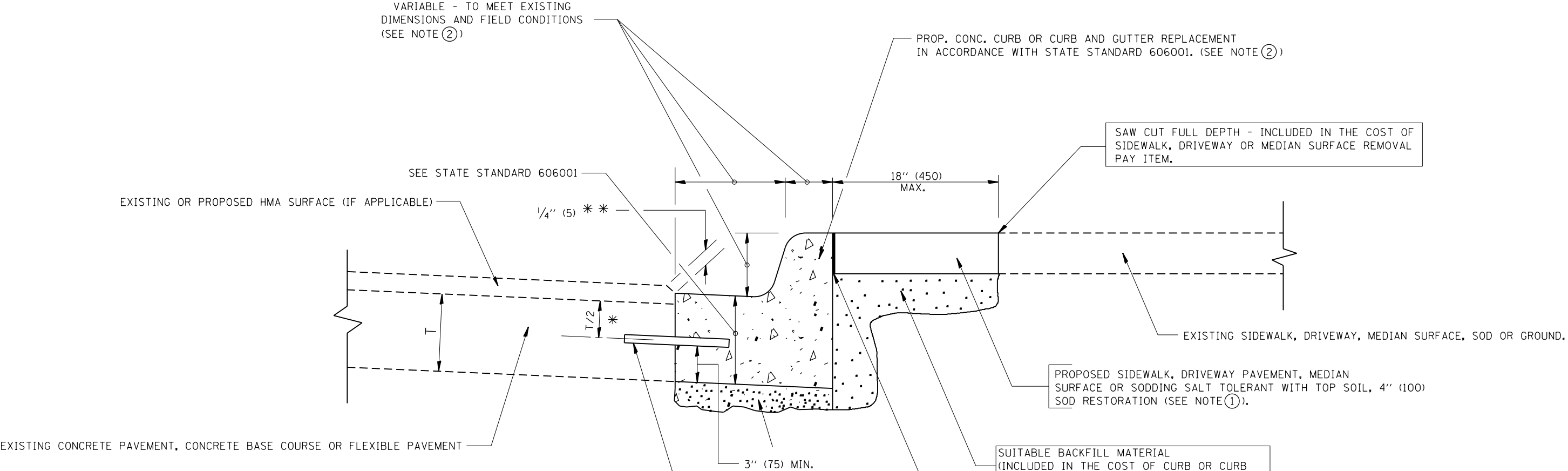
1. REMOVE THE EXISTING HMA MATERIAL OVER THE AREA TO BE PATCHED.
2. REMOVE AND REPLACE WITH CLASS C OR D PATCH.
3. REPLACE HMA MATERIAL OVER THE AREA TO BE PATCHED.

SEQUENCE OF CONSTRUCTION (MILLING FIRST)

1. MILL HMA FIRST IF THERE IS AT LEAST 4 1/2 INCHES OR MORE OF HMA MATERIAL ON TOP OF THE EXISTING PAVEMENT OR IF THE PAVEMENT IS FULL DEPTH HMA. A MINIMUM OF 2 INCHES OF HMA MATERIAL SHALL BE IN PLACE AFTER MILLING.
2. REMOVE AND REPLACE WITH FULL DEPTH CLASS D PATCHES TO TOP OF MILLED SURFACE.

ALL DIMENSIONS ARE IN INCHES (MILLIMETERS) UNLESS OTHERWISE SHOWN.

FILE NAME =	USER NAME = gorengautab	DESIGNED - R. SHAH	REVISED - A. ABBAS 04-27-98	STATE OF ILLINOIS DEPARTMENT OF TRANSPORTATION	PAVEMENT PATCHING FOR HMA SURFACED PAVEMENT			F.A.J. RTE.	SECTION	COUNTY	TOTAL SHEETS	SHEET NO.
p:\11\084EBIDINTEG\illinois.gov\PWIDOT\Documents\DOT Offices\District 1\Projects\DI2121\BROWNote\Design\DistStd.dgn			REVISED - R. BORO 01-01-07					2807	1819 RS-5	COOK	32	23
	PLOT SCALE = 100.0000' / in.	CHECKED -	REVISED - R. BORO 09-04-07					BD400-04 (BD-22)		CONTRACT NO. 62F82		
	PLOT DATE = 3/19/2018	DATE - 10-25-94	REVISED - K. ENG 10-27-08		SCALE: NONE	SHEET NO. 1 OF 1 SHEETS	STA.	TO STA.		FED. ROAD DIST. NO. 1 ILLINOIS FED. AID PROJECT		



- * 3" (75) MINIMUM FROM TOP AND BOTTOM OF THE CONCRETE PAVEMENT OR BASE COURSE.
- * * IF THE FINAL SURFACE OF THE PAVEMENT IS CONCRETE, THE GUTTER IS TO BE FLUSH WITH THE PAVEMENT.
- NOTE: ① SIDEWALK, DRIVEWAY PAVEMENT OR MEDIAN SURFACE SHALL BE SIMILAR TO THE MATERIAL BEING REMOVED AND WILL BE PAID FOR SEPARATELY.
- SODDING, SALT TOLERANT AND TOP SOIL, FURNISH AND PLACE 4" WILL BE PAID FOR SEPARATELY.
- ② FERTILIZER FOR THE PLACEMENT OF THE SOD IS NOT REQUIRED
- ③ CURB OR CURB AND GUTTER REPLACEMENT SHALL MATCH THE SHAPE OF THE EXISTING CURB OR CURB AND GUTTER UNLESS OTHERWISE SPECIFIED.
- ④ FOR CURB OR CURB AND GUTTER REMOVAL AND REPLACEMENT ADJACENT TO FLEXIBLE PAVEMENT DELETE EPOXY COATED TIE BARS.
- ⑤ LONGITUDINAL BARS, IF ENCOUNTERED IN THE EXISTING CURB OR CURB AND GUTTER, ARE NOT TO BE REPLACED. CUTTING AND REMOVING LONGITUDINAL BARS SHALL BE INCLUDED IN THE COST OF CURB OR CURB AND GUTTER REMOVAL AND REPLACEMENT.
- ⑥ THE COST OF HMA SURFACE REMOVAL IN THE EXISTING GUTTER FLAG SHALL BE INCLUDED IN THE COST OF THE CURB AND GUTTER REMOVAL AND REPLACEMENT.
- ⑦ THE REMOVAL AND REPLACEMENT OF THE EXISTING CURB OR CURB AND GUTTER SHALL BE DONE IN ACCORDANCE WITH THE APPLICABLE PORTIONS OF SECTION 440 AND 606 OF THE STANDARD SPECIFICATIONS.
- ⑧ THE LOCATIONS OF REMOVAL AND REPLACEMENT OF EXISTING CURB OR CURB AND GUTTER SHALL BE DETERMINED BY THE RESIDENT ENGINEER AT THE TIME OF CONSTRUCTION.

UNSUITABLE SUB-BASE MATERIAL TO BE REMOVED, IF DIRECTED BY THE ENGINEER, SHALL BE REPLACED WITH EITHER SUB-BASE GRANULAR MATERIAL, TYPE B OR ADDITIONAL THICKNESS OF CONCRETE.

REMOVAL AND REPLACEMENT 4" (100) OR LESS IS INCLUDED IN THE COST OF CURB OR CURB AND GUTTER REMOVAL AND REPLACEMENT.

REMOVAL AND REPLACEMENT IN EXCESS OF 4" (100) WILL BE PAID FOR IN ACCORDANCE WITH ARTICLE 109.04 OF THE STANDARD SPECIFICATIONS.

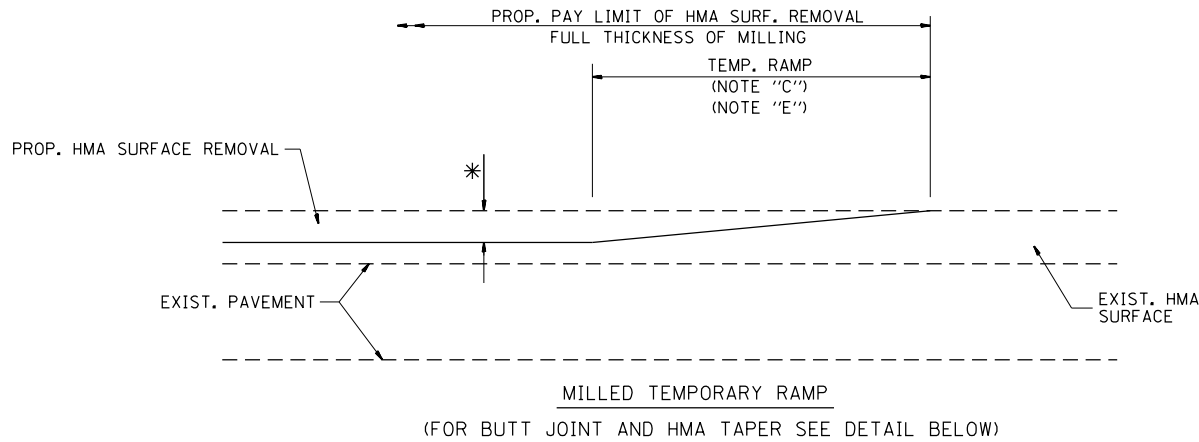
PROPOSED #6 (20) EPOXY COATED TIE BARS 24" (600) LONG AT 24" (600) CENTERS WILL NOT BE PAID FOR SEPARATELY. DELETE EPOXY COATED TIE BARS IF EXISTING TIE BARS ARE USUABLE AS DETERMINED BY THE ENGINEER. (SEE NOTE ③).

BASIS OF PAYMENT:
THIS WORK WILL BE PAID FOR AT THE CONTRACT UNIT PRICE PER FOOT (METER) FOR "CURB REMOVAL AND REPLACEMENT" OR "COMBINATION CONCRETE CURB AND GUTTER REMOVAL AND REPLACEMENT".

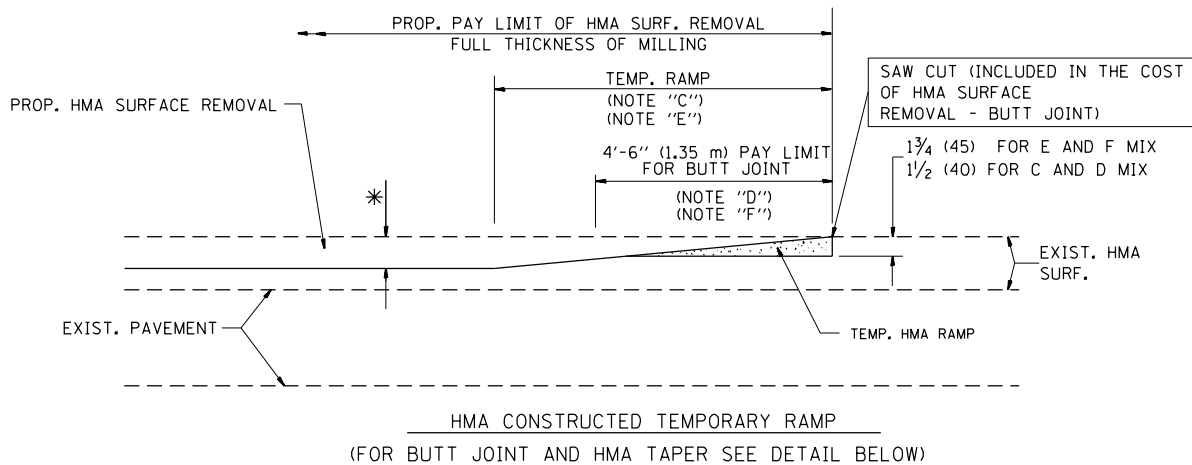
CURB OR CURB AND GUTTER REMOVAL AND REPLACEMENT

ALL DIMENSIONS ARE IN INCHES (MILLIMETERS) UNLESS OTHERWISE SHOWN.

FILE NAME = p:\IL1084EBID\INTEG\Illinois.gov\PWIDOT\Documents\DOT Offices\District 1\Projects\DI2121\BROWNote\Design\DistStd.dgn	USER NAME = gorengautab	DESIGNED - A. HOUSEH	REVISED - R. SHAH 10-03-96	STATE OF ILLINOIS DEPARTMENT OF TRANSPORTATION	CURB OR CURB AND GUTTER REMOVAL AND REPLACEMENT			F.A.U. RTE.	SECTION	COUNTY	TOTAL SHEETS	SHEET NO.
			REVISED - A. ABBAS 03-21-97					2807	1819 RS-5	COOK	32	24
	PLOT SCALE = 100.0000' / in.	CHECKED -	REVISED - M. GOMEZ 01-22-01					BD600-06 (BD-24)		CONTRACT NO. 62F82		
	PLOT DATE = 3/19/2018	DATE - 03-11-94	REVISED - R. BORO 12-15-09					FED. ROAD DIST. NO. 1 ILLINOIS FED. AID PROJECT				
				SCALE: NONE			SHEET NO. 1 OF 1 SHEETS			STA. TO STA.		

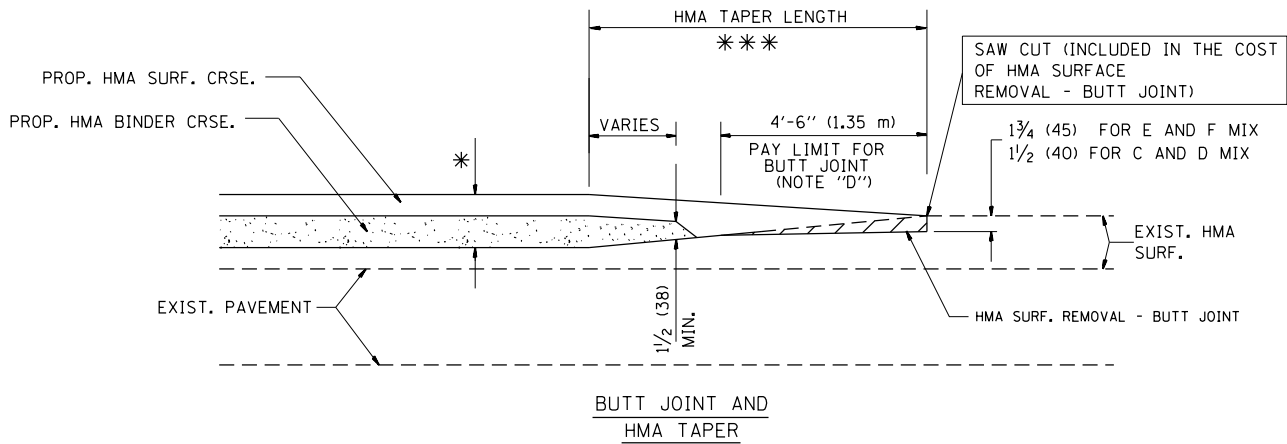


OPTION 1

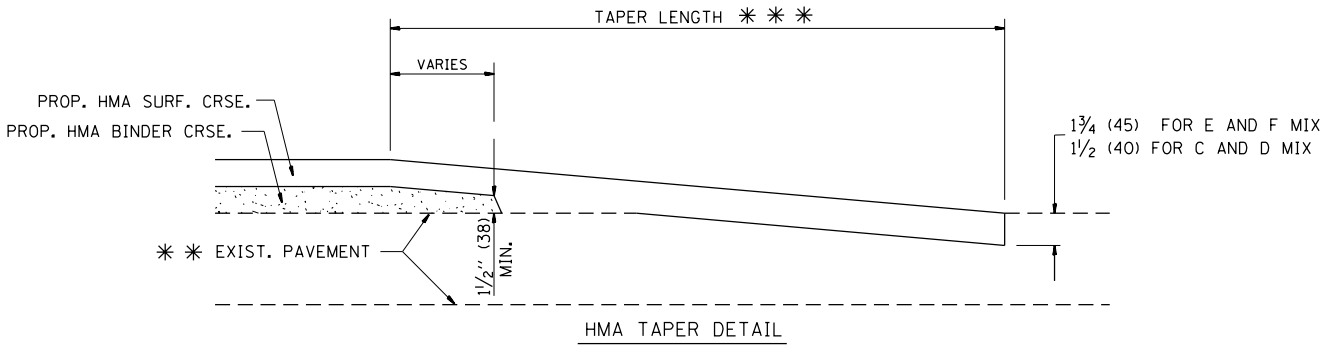
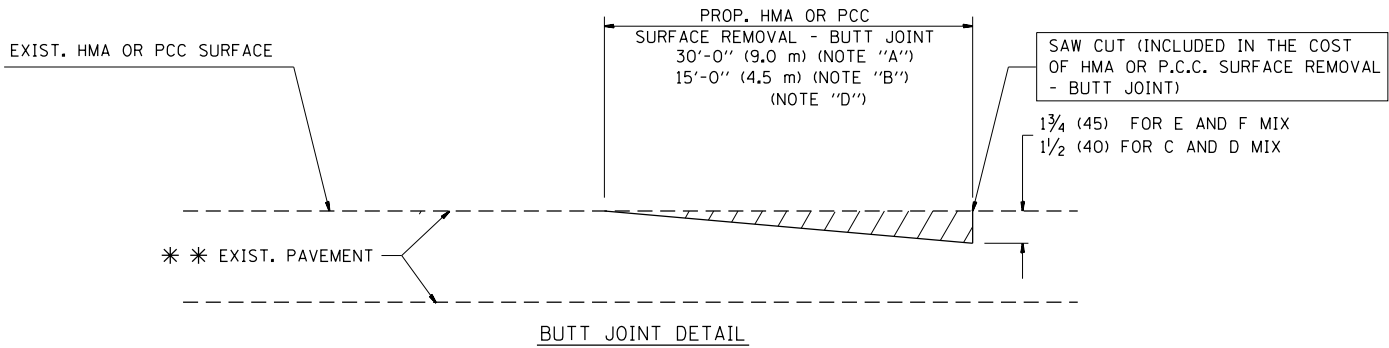


OPTION 2

TYPICAL TEMPORARY RAMP



TYPICAL BUTT JOINT AND HMA TAPER
FOR MILLING AND RESURFACING



TYPICAL BUTT JOINT AND HMA TAPER
FOR RESURFACING ONLY

* * PC CONCRETE, HMA OR HMA RESURFACED PAVEMENT.

NOTES

- A: MAINLINE ROADWAYS AND MAJOR SIDE ROADS.
- B: MINOR SIDE ROADS.
- C: THE TEMP. RAMP SHALL BE CONSTRUCTED IMMEDIATELY UPON REMOVAL OF THE EXISTING HMA SURFACE.
- D: THE BUTT JOINT SHALL BE CONSTRUCTED IMMEDIATELY PRIOR TO PLACING THE PROPOSED HMA COURSES.
- E: TAPER THE TEMP. RAMP AT A RATE OF 3'-0" (900 mm) PER 1 INCH (25 mm) OF MILLING THICKNESS.
- F: INSTALLATION AND REMOVAL OF THE 4'-6" (1.35 m) TEMP. RAMP IS INCLUDED IN COST OF HMA SURFACE REMOVAL - BUTT JOINT

G: SEE ARTICLE 406.08 AND 406.14 OF THE STANDARD SPECIFICATIONS FOR "HMA AND/OR PCC SURFACE REMOVAL, BUTT JOINT".

* SEE TYPICAL SECTIONS FOR MILLING THICKNESS.

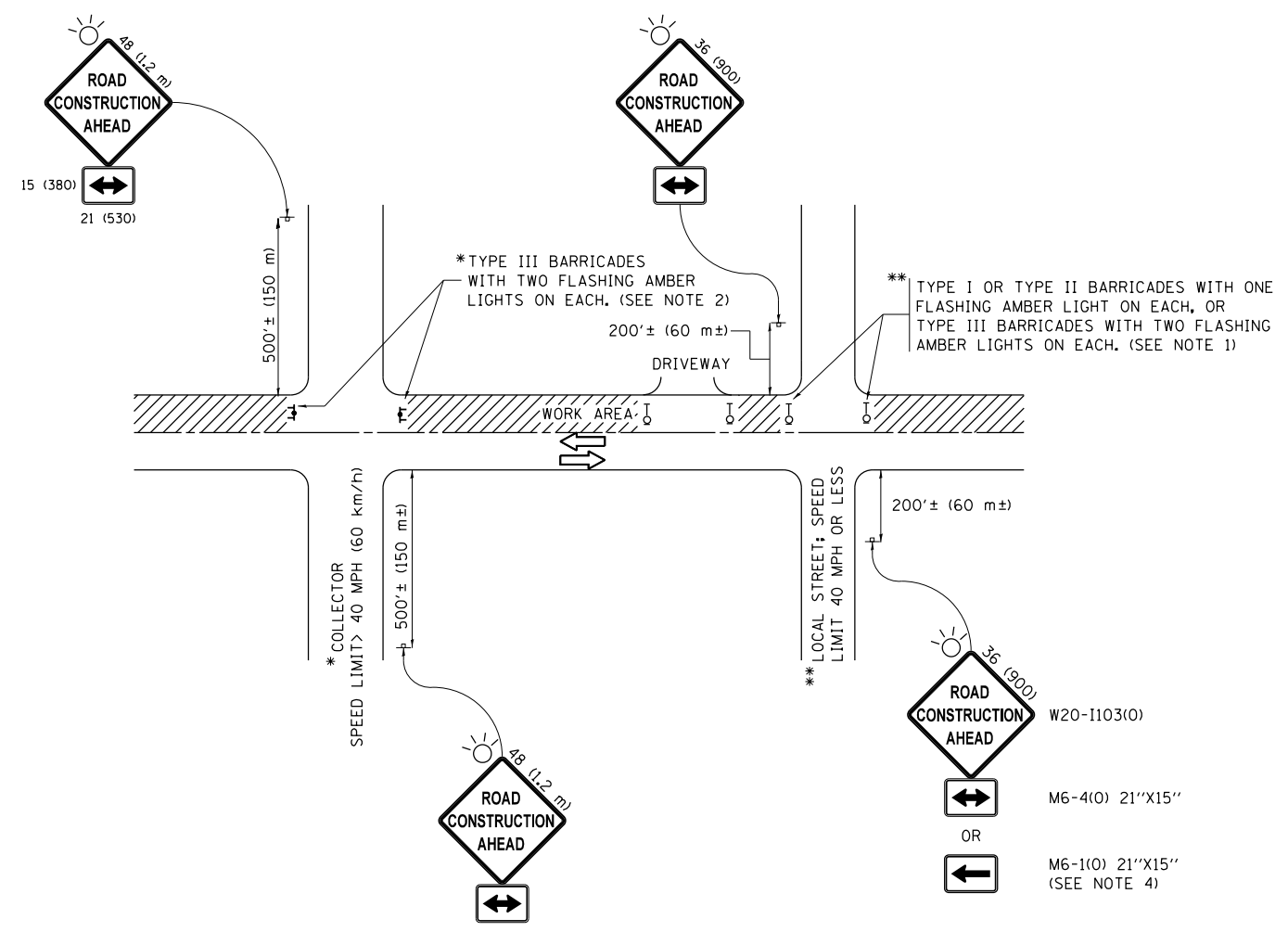
* * * 20'-0" (6.1 m) PER 1 (25) RESURFACING (NOTE "A")
10'-0" (3.0 m) PER 1 (25) RESURFACING (NOTE "B")

BASIS OF PAYMENT:

THE BUTT JOINT WILL BE PAID FOR AT THE CONTRACT UNIT PRICE PER SQUARE YARD (SQUARE METER) FOR "HOT-MIX ASPHALT SURFACE REMOVAL - BUTT JOINT" OR FOR "PORTLAND CEMENT CONCRETE SURFACE REMOVAL - BUTT JOINT".

ALL DIMENSIONS ARE IN INCHES (MILLIMETERS) UNLESS OTHERWISE SHOWN.

FILE NAME =	USER NAME = gorengautab	DESIGNED - M. DE YONG	REVISED - R. SHAH 10-25-94	STATE OF ILLINOIS DEPARTMENT OF TRANSPORTATION	BUTT JOINT AND HMA TAPER DETAILS	F.A.J. RTE.	SECTION	COUNTY	TOTAL SHEETS	SHEET NO.
p:\1\1084EBID\INTEG\Illinois.gov\PI\DOT\Documents\IDOT Offices\District 1\Projects\DI2121\BROWN\Design\DistStd.dgn			REVISED - A. ABBAS 03-21-97			2807	1819 RS-5	COOK	32	25
	PLOT SCALE = 100.0000' / in.	CHECKED -	REVISED - M. GOMEZ 04-06-01			BD400-05 BD32		CONTRACT NO.62F82		
	PLOT DATE = 3/19/2018	DATE - 06-13-90	REVISED - R. BORO 01-01-07			SCALE: NONE	SHEET NO. 1 OF 1 SHEETS	STA.	TO STA.	FED. ROAD DIST. NO. 1 ILLINOIS FED. AID PROJECT

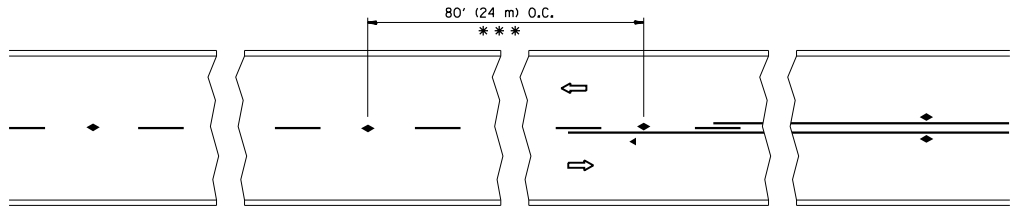


NOTES:

- SIDE ROAD WITH A SPEED LIMIT OF 40 MPH (60 km/h) OR LESS AS SHOWN ON THE DRAWING AND AS DIRECTED BY THE ENGINEER:
 - ONE "ROAD CONSTRUCTION AHEAD" SIGN 36 x 36 (900x900) WITH A FLASHER MOUNTED ON IT APPROXIMATELY 200' (60 m) IN ADVANCE OF THE MAIN ROUTE.
 - THE CLOSED PORTION OF THE MAIN ROUTE SHALL BE PROTECTED BY BLOCKING WITH TYPE I, TYPE II OR TYPE III BARRICADES, 1/3 OF THE CROSS SECTION OF THE CLOSED PORTION.
- SIDE ROAD WITH A SPEED LIMIT GREATER THAN 40 MPH (60 km/h) AS SHOWN ON THE DRAWING AND AS DIRECTED BY THE ENGINEER:
 - ONE "ROAD CONSTRUCTION AHEAD" SIGN 48 x 48 (1.2 m x 1.2 m) WITH A FLASHER MOUNTED ON IT APPROXIMATELY 500' (150 m) IN ADVANCE OF THE MAIN ROUTE.
 - THE CLOSED PORTION OF THE MAIN ROUTE SHALL BE PROTECTED BY BLOCKING WITH TYPE III BARRICADES, 1/2 OF THE CROSS SECTION OF THE CLOSED PORTION.
- CONES MAY BE SUBSTITUTED FOR BARRICADES OR DRUMS AT HALF THE SPACING DURING DAY OPERATIONS. CONES SHALL BE A MINIMUM OF 28 (710) IN HEIGHT.
- WHEN THE SIDE ROAD LIES BETWEEN THE BEGINNING OF THE MAINLINE SIGNING AND THE WORK ZONE, A SINGLE HEADED ARROW (M6-1) SHALL BE USED IN LIEU OF THE DOUBLE HEADED ARROW (M6-4).
- WHEN WORK IS BEING PERFORMED ON A SIDE ROAD OR DRIVEWAY, FOLLOW THE APPLICABLE STANDARD(S). THE DIRECTIONAL ARROW (M6-1 OR M6-4) SHALL BE COVERED OR REMOVED WHEN NO LONGER CONSISTENT WITH THE TRAFFIC CONTROL SET-UP.
- ADVANCE WARNING SIGNS ARE TO BE OMITTED ON DRIVEWAYS UNLESS OTHERWISE SPECIFIED IN THE PLANS OR BY THE ENGINEER.
- THE TRAFFIC CONTROL AND PROTECTION FOR SIDE ROADS, INTERSECTIONS, AND DRIVEWAYS SHALL BE INCLUDED IN THE COST OF SPECIFIED TRAFFIC CONTROL STANDARDS OR ITEMS.

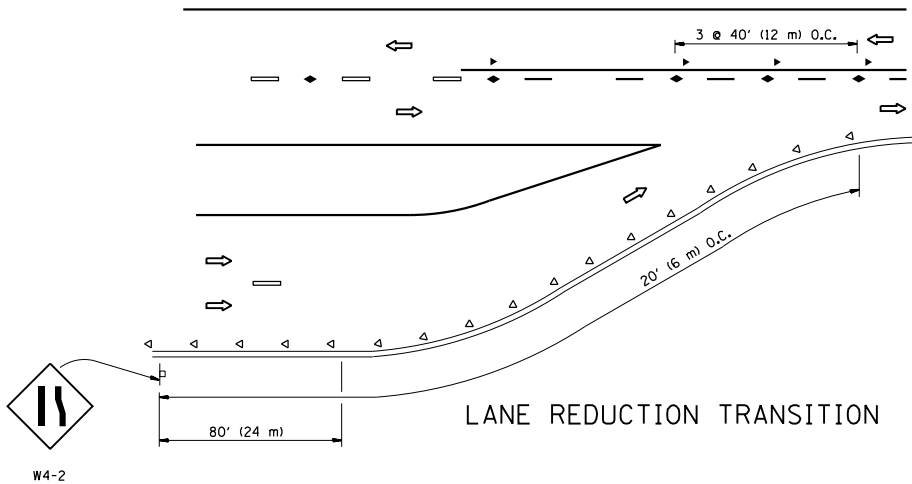
All dimensions are in inches (millimeters) unless otherwise shown.

FILE NAME =	USER NAME = gorengautab	DESIGNED - L.H.A.	REVISED - A. HOUSEH 10-15-96	STATE OF ILLINOIS DEPARTMENT OF TRANSPORTATION	TRAFFIC CONTROL AND PROTECTION FOR SIDE ROADS, INTERSECTIONS, AND DRIVEWAYS				F.A.U. RTE.	SECTION	COUNTY	TOTAL SHEETS	SHEET NO.
pwt\11\084EBID\INTEG\Illinois.gov\PI\DOT\Documents\IDOT Offices\District 1\Projects\DI2121\BROWN\Design\DistStd.dgn		DRAWN -	REVISED - T. RAMMACHER 01-06-00		2807	1819 RS-5	COOK	32	26				
	PLOT SCALE = 100.0000' / in.	CHECKED -	REVISED - A. SCHUETZE 07-01-13		TC-10		CONTRACT NO. 62F82						
Default	PLOT DATE = 3/19/2018	DATE - 06-89	REVISED - A. SCHUETZE 09-15-16		SCALE: NONE	SHEET 1	OF 1	SHEETS	STA.	TO STA.	ILLINOIS FED. AID PROJECT		

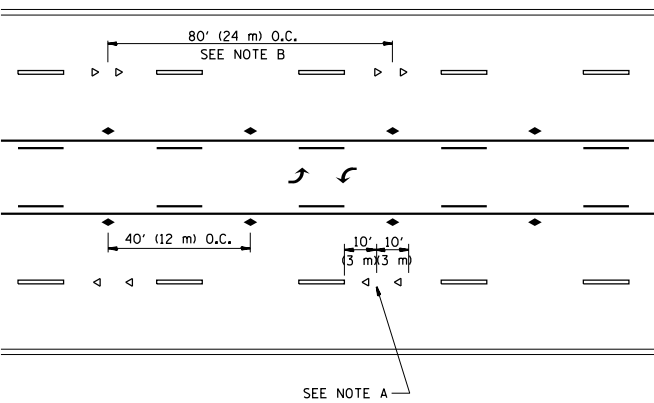


*** REDUCE TO 40' (12 m) O.C. ON CURVES WITH POSTED OR ADVISORY SPEED 45 M.P.H. (70 km/h) OR LESS.

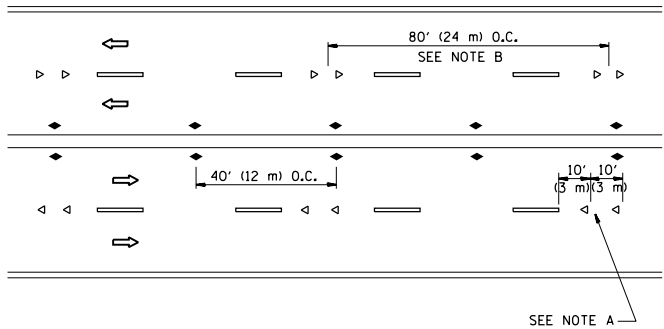
TWO-LANE/TWO-WAY



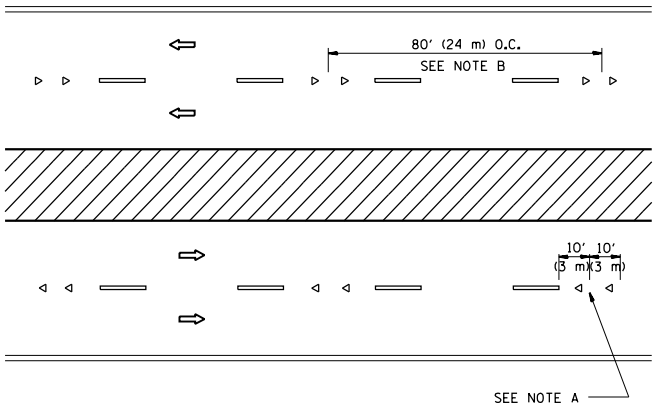
LANE REDUCTION TRANSITION



TWO-WAY LEFT TURN



MULTI-LANE/UNDIVIDED



MULTI-LANE/DIVIDED

GENERAL NOTES

1. MARKERS USED WITH DASHED LINES SHALL BE CENTERED IN THE GAP BETWEEN SEGMENTS.
2. MARKERS USED ADJACENT TO SOLID LINES SHALL BE OFFSET 2 TO 3 (50 TO 75) TOWARD TRAFFIC AS SHOWN.
3. MARKERS THROUGH TANGENTS LESS THAN 500' (150 m) IN LENGTH BETWEEN CURVES SHALL BE INSTALLED AT THE LESSER OF THE TWO CURVE SPACINGS.

LANE MARKER NOTES

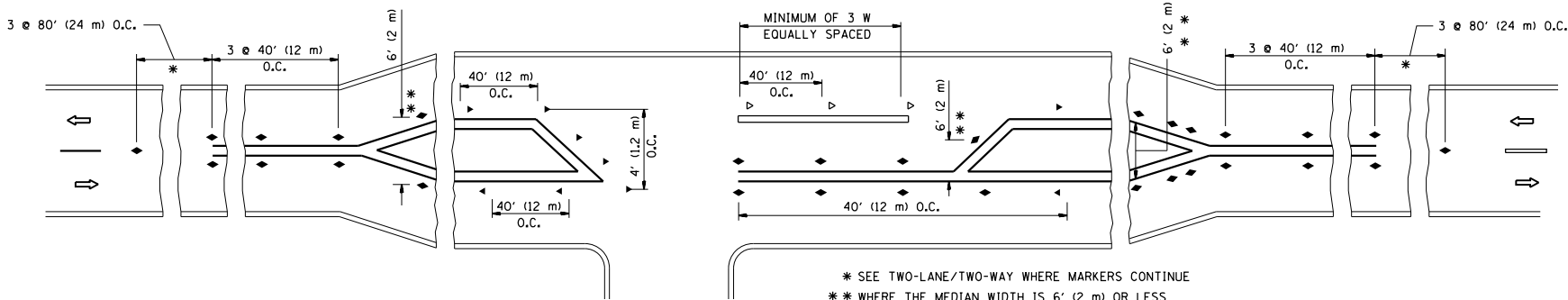
- A. USE DOUBLE LANE LINE MARKERS SPACED AS SHOWN.
- B. REDUCE TO 40' (12 m) O.C. ON CURVES WHERE ADVISORY SPEEDS ARE 10 M.P.H (20 km/h) LOWER THAN POSTED SPEEDS.

SYMBOLS

- YELLOW STRIPE
- WHITE STRIPE
- ◀ ONE-WAY AMBER MARKER
- ◀ ONE-WAY CRYSTAL MARKER (W/O)
- ◆ TWO-WAY AMBER MARKER

DESIGN NOTES

1. DOUBLE LANE LINE MARKERS SHALL BE USED UNLESS SPECIFIED OTHERWISE.
2. EXCEPT AS SHOWN ON THE LANE REDUCTION TRANSITION AND FREEWAY EXIT RAMP DETAIL, MARKERS ARE NOT TO BE SPECIFIED ON RIGHT EDGE LINES.
3. THE EXACT MARKER LIMITS, SPACING, AND COLOR SHALL BE INCLUDED IN THE PLANS WHEN STANDARD SPECIFICATIONS ARE NOT BEING USED.
4. MARKERS SHOULD NOT BE USED ALONGSIDE CURBS EXCEPT FOR EXTREMELY SHORT SECTIONS OF CURBS WHERE NOT MORE THAN TWO MARKERS WOULD BE INVOLVED.

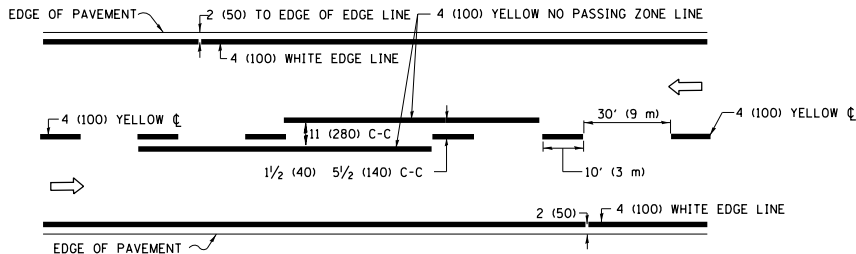


LEFT TURN

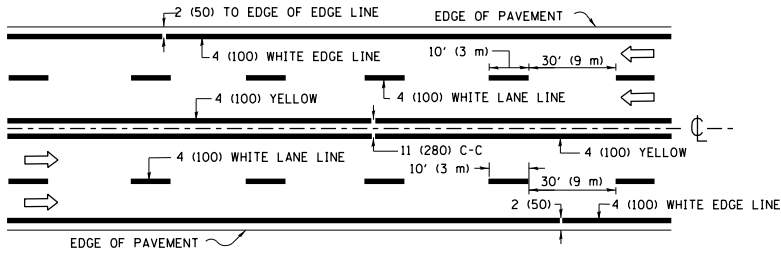
* SEE TWO-LANE/TWO-WAY WHERE MARKERS CONTINUE
** WHERE THE MEDIAN WIDTH IS 6' (2 m) OR LESS
USE TWO-WAY MARKERS.

All dimensions are in inches (millimeters)
unless otherwise shown.

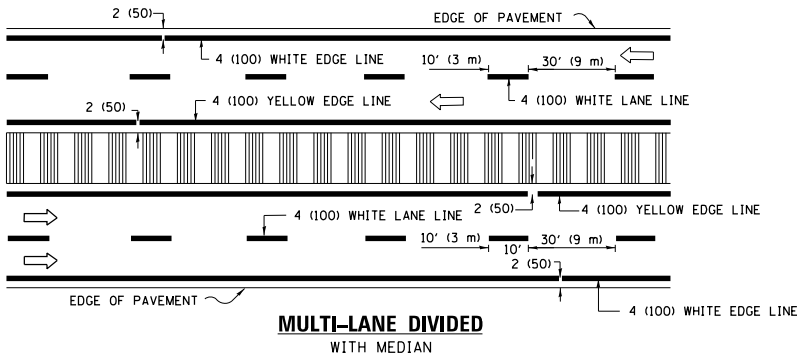
FILE NAME = p:\11\084EBID\INTEG\illinois.gov\PI\DOT\Documents\DOT Offices\District 1\Projects\DI2121\BROWN\Design\DistStd.dgn	USER NAME = gorengautab	DESIGNED =	REVISED = T. RAMMACHER 09-19-94	STATE OF ILLINOIS DEPARTMENT OF TRANSPORTATION	TYPICAL APPLICATIONS RAISED REFLECTIVE PAVEMENT MARKERS (SNOW-PLOW RESISTANT)			F.A.U. RTE.	SECTION	COUNTY	TOTAL SHEETS	SHEET NO.
	PLOT SCALE = 100.0000' / in.	CHECKED =	REVISED = T. RAMMACHER 03-12-99					2807	1819 RS-5	COOK	32	27
	PLOT DATE = 3/19/2018	DATE =	REVISED = T. RAMMACHER 01-06-00		SCALE: NONE SHEET NO. 1 OF 1 SHEETS STA. TO STA.			TC-11 CONTRACT NO. 62F82				
			REVISED = C. JUCIUS 09-09-09					FED. ROAD DIST. NO. 1 ILLINOIS FED. AID PROJECT				



2-LANE ROADWAY

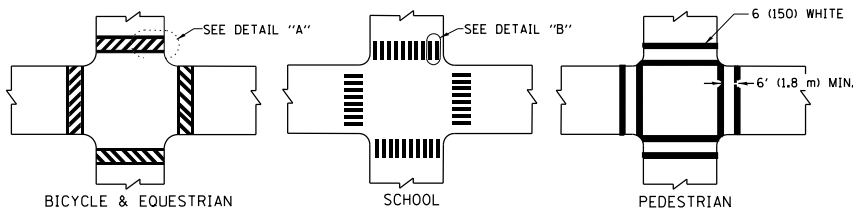


MULTI-LANE UNDIVIDED



MULTI-LANE DIVIDED
WITH MEDIAN

TYPICAL LANE AND EDGE LINE MARKING

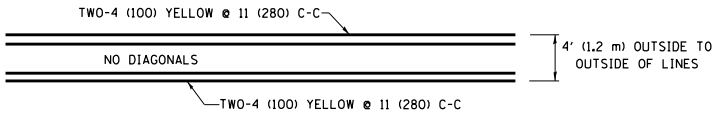


DETAIL "A"

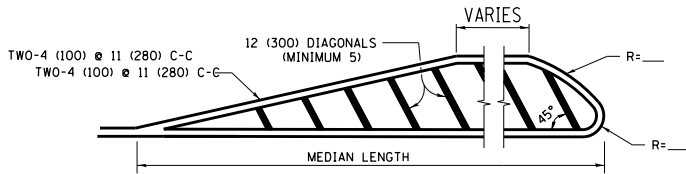
DETAIL "B"

TYPICAL CROSSWALK MARKING

* MARKINGS SHALL BE INSTALLED PARALLEL TO THE CENTERLINE OF THE ROAD WHICH IT CROSSES

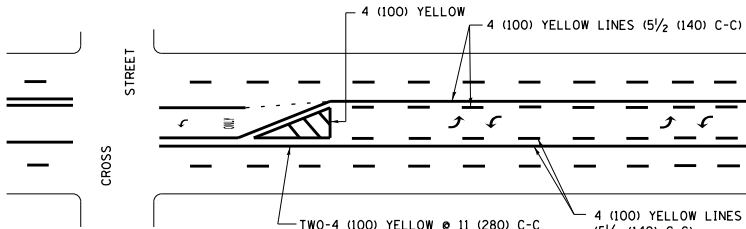


4' (1.2 m) WIDE MEDIANS ONLY

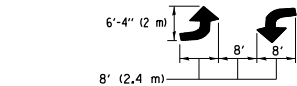


DIAGONAL LINE SPACING: 50' (15 m) C-C (LESS THAN 30MPH (50 km/h))
75' (25 m) C-C 30MPH (50 km/h) TO 45MPH (70 km/h)
150' (45 m) C-C (MORE THAN 45MPH (70 km/h))

MEDIANS OVER 4' (1.2 m) WIDE

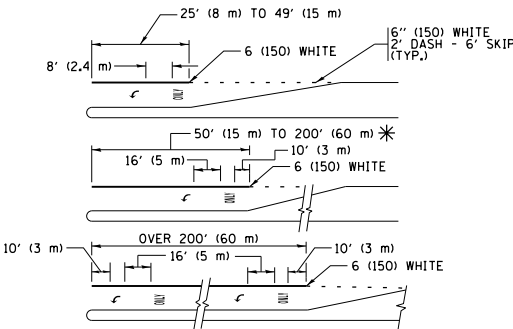


A MINIMUM OF TWO PAIRS OF TURN ARROWS SHALL BE USED, WHITE IN COLOR. ADDITIONAL PAIRS SHALL BE PLACED AT 200' (60 m) TO 300' (90 m) INTERVALS.



MEDIAN WITH TWO-WAY LEFT TURN LANE

TYPICAL PAINTED MEDIAN MARKING

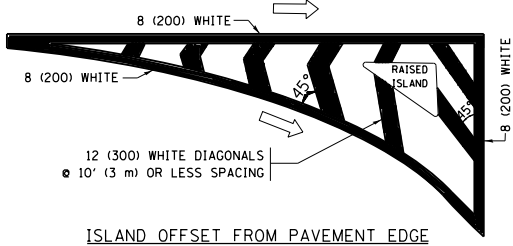


FULL SIZE LETTERS 8' (2.4 m) AND ARROWS SHALL BE USED.
AREA = 15.6 SQ. FT. (1.5 m²) ONLY AREA = 20.8 SQ. FT. (1.9 m²)

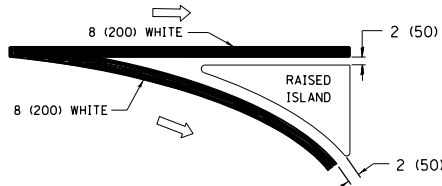
* TURN LANES IN EXCESS OF 400' (120 m) IN LENGTH MAY HAVE AN ADDITIONAL SET OF ARROW - "ONLY" INSTALLED MIDWAY BETWEEN THE OTHER TWO SETS OF ARROW - "ONLY".

TYPICAL LEFT (OR RIGHT) TURN LANE

TYPICAL TURN LANE MARKING

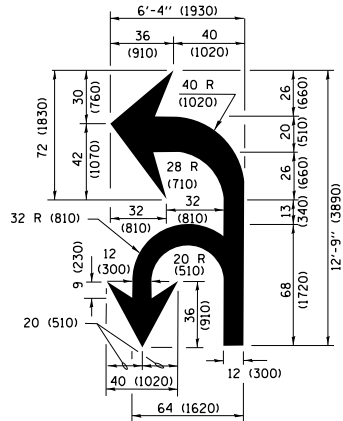


ISLAND OFFSET FROM PAVEMENT EDGE

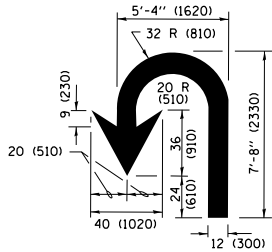


ISLAND AT PAVEMENT EDGE

TYPICAL ISLAND MARKING



COMBINATION
LEFT AND U-TURN



U-TURN

LANE REDUCTION TRANSITION

* LANE REDUCTION ARROWS REQUIRED AT SPEEDS OF 45 MPH OR GREATER OR WHEN SPECIFIED IN PLANS.

D(FT)	SPEED LIMIT
345	30
425	35
500	40
580	45
665	50
750	55

TYPE OF MARKING	WIDTH OF LINE	PATTERN	COLOR	SPACING /REMARKS
CENTERLINE ON 2 LANE PAVEMENT	4 (100)	SKIP-DASH	YELLOW	10' (3 m) LINE WITH 30' (9 m) SPACE
CENTERLINE ON MULTI-LANE UNDIVIDED PAVEMENT	2 @ 4 (100)	SOLID	YELLOW	11 (280) C-C
NO PASSING ZONE LINES: FOR ONE DIRECTION FOR BOTH DIRECTIONS	4 (100) 2 @ 4 (100)	SOLID SOLID	YELLOW YELLOW	5 1/2 (140) C-C FROM SKIP-DASH CENTERLINE 11 (280) C-C OMIT SKIP-DASH CENTERLINE BETWEEN
LANE LINES	4 (100) 5 (125) ON FREEWAYS	SKIP-DASH SKIP-DASH	WHITE WHITE	10' (3 m) LINE WITH 30' (9 m) SPACE
DOTTED LINES (EXTENSIONS OF CENTER, LANE OR TURN LANE MARKINGS)	SAME AS LINE BEING EXTENDED	SKIP-DASH	SAME AS LINE BEING EXTENDED	2' (600) LINE WITH 6' (1.8 m) SPACE
EDGE LINES	4 (100)	SOLID	YELLOW-LEFT WHITE-RIGHT	OUTLINE MEDIANS IN YELLOW
TURN LANE MARKINGS	6 (150) LINE; FULL SIZE LETTERS & SYMBOLS (8' (2.4m))	SOLID	WHITE	SEE TYPICAL TURN LANE MARKING DETAIL
TWO WAY LEFT TURN MARKING	2 @ 4 (100) EACH DIRECTION 8' (2.4m) LEFT ARROW	SKIP-DASH AND SOLID IN PAIRS	YELLOW WHITE	10' (3 m) LINE WITH 30' (9 m) SPACE FOR SKIP-DASH 5 1/2 (140) C-C BETWEEN SOLID LINE AND SKIP-DASH LINE SEE TYPICAL TWO-WAY LEFT TURN MARKING DETAIL
CROSSWALK LINES (PEDESTRIAN) A. DIAGONALS (BIKE & EQUESTRIAN) B. LONGITUDINAL BARS (SCHOOL)	2 @ 6 (150) 12 (300) @ 45° 12 (300) @ 90°	SOLID SOLID SOLID	WHITE WHITE WHITE	NOT LESS THAN 6' (1.8 m) APART 2' (600) APART 2' (600) APART SEE TYPICAL CROSSWALK MARKING DETAILS.
STOP LINES	24 (600)	SOLID	WHITE	PLACE 4' (1.2 m) IN ADVANCE OF AND PARALLEL TO CROSSWALK, IF PRESENT, OTHERWISE, PLACE AT DESIRED STOPPING POINT, PARALLEL TO CROSSROAD CENTERLINE, WHERE POSSIBLE
PAINTED MEDIANS	2 @ 4 (100) WITH 12 (300) DIAGONALS @ 45° NO DIAGONALS USED FOR 4' (1.2 m) WIDE MEDIANS	SOLID	YELLOW; TWO WAY TRAFFIC WHITE; ONE WAY TRAFFIC	11 (280) C-C FOR THE DOUBLE LINE SEE TYPICAL PAINTED MEDIAN MARKING.
GORE MARKING AND CHANNELIZING LINES	8 (200) WITH 12 (300) DIAGONALS @ 45°	SOLID	WHITE	DIAGONALS: 15' (4.5 m) C-C (LESS THAN 30MPH (50 km/h)) 20' (6 m) C-C 30MPH (50 km/h) TO 45MPH (70 km/h) 30' (9 m) C-C (OVER 45MPH (70 km/h))
RAILROAD CROSSING	24 (600) TRANSVERSE LINES; "RR" IS 6' (1.8 m) LETTERS; 16 (400) LINE FOR "X"	SOLID	WHITE	SEE STATE STANDARD 780001 AREA OF: "R"=3.6 SQ. FT. (0.33 m ²) EACH "X"=54.0 SQ. FT. (5.0 m ²)
SHOULDER DIAGONALS (REQUIRED FOR SHOULDERS ≥ 8')	12 (300) @ 45°	SOLID	WHITE - RIGHT YELLOW - LEFT	50' (15 m) C-C (LESS THAN 30MPH (50 km/h)) 75' (25 m) C-C (30 MPH (50 km/h) TO 45MPH (70 km/h)) 150' (45 m) C-C (OVER 45MPH (70 km/h))
U TURN ARROW	SEE DETAIL	SOLID	WHITE	16.3 SF
2 ARROW COMBINATION LEFT AND U TURN	SEE DETAIL	SOLID	WHITE	30.4 SF

FOR FURTHER DETAILS ON PAVEMENT MARKING REFER TO STANDARD SPECIFICATIONS FOR ROAD AND BRIDGE CONSTRUCTION AND STATE STANDARD 780001.

All dimensions are in inches (millimeters) unless otherwise shown.

FILE NAME =	USER NAME = gorengautab	DESIGNED - EVERS	REVISED - C. JUCIUS 09-09-09
p:\1\1084EBID\TEG\Illinois.gov\PIWIDOT\Documents\100T Offices\District 1\Projects\DI2121\BROWN\Note\Design\DistStd.dgn			REVISED - C. JUCIUS 07-01-13
	PLOT SCALE = 100.0000' / in.	CHECKED -	REVISED - C. JUCIUS 12-21-15
Default	PLOT DATE = 3/19/2018	DATE - 03-19-90	REVISED - C. JUCIUS 04-12-16

STATE OF ILLINOIS
DEPARTMENT OF TRANSPORTATION

DISTRICT ONE
TYPICAL PAVEMENT MARKINGS

SCALE: NONE	SHEET 1	OF 1	SHEETS	STA.	TO STA.
-------------	---------	------	--------	------	---------

F.A.U. RTE.	SECTION	COUNTY	TOTAL SHEETS	SHEET NO.
2807	1819 RS-5	COOK	32	28
TC-13		CONTRACT NO. 62F82		
ILLINOIS		FED. AID PROJECT		

TURN BAY ENTRANCE AT START
OF LANE CLOSURE TAPER

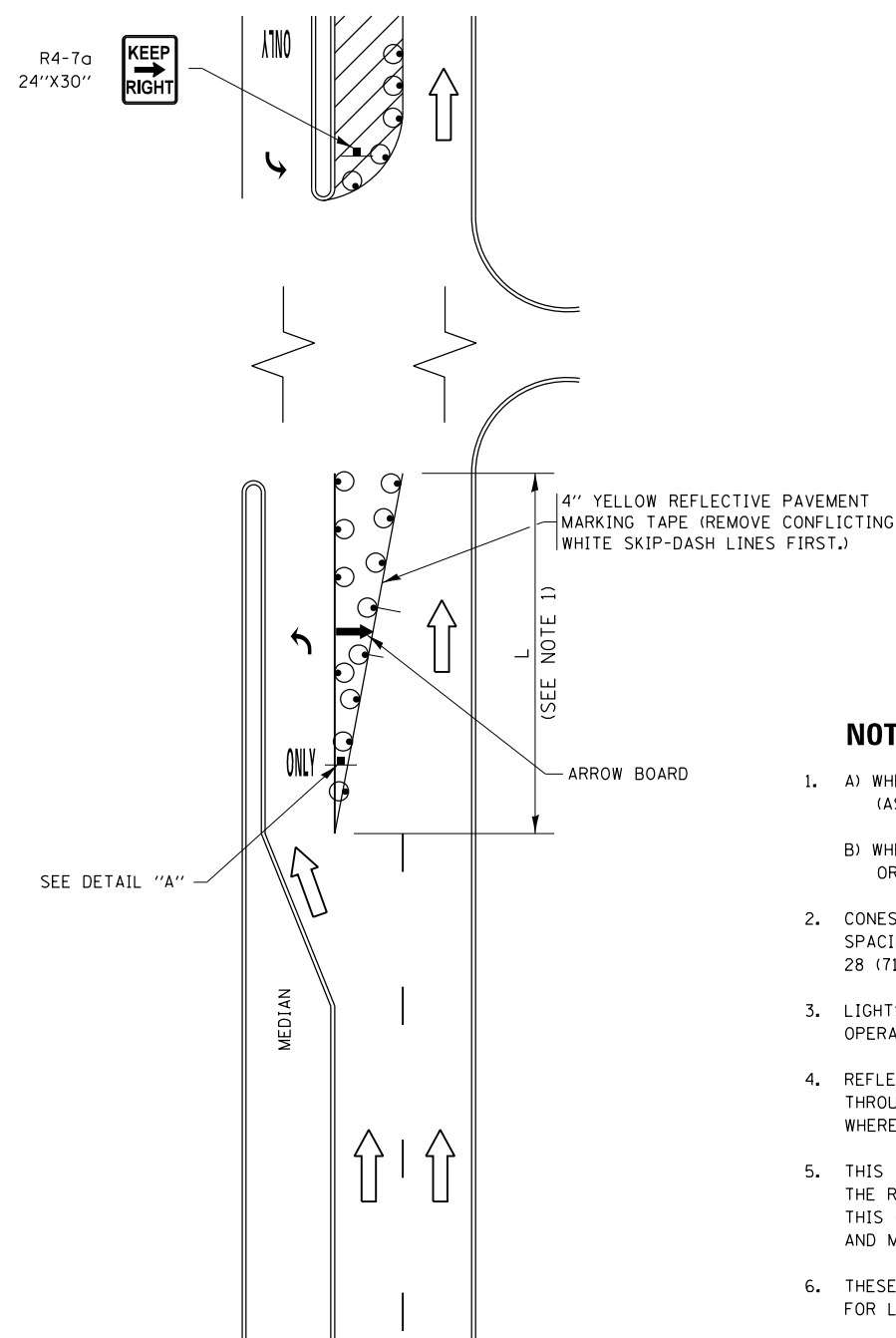
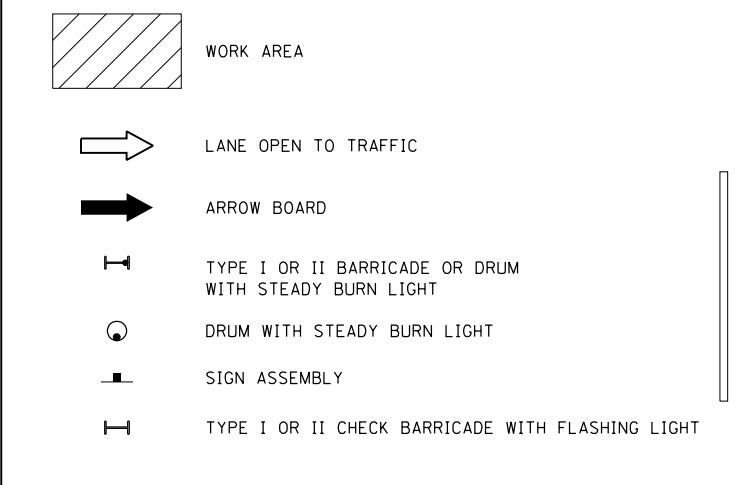


FIGURE 1

LEGEND



NOTES:

1. A) WHEN "L" IS \leq THE STORAGE LENGTH OF THE TURN LANE (AS SHOWN IN FIG. 1), USE FIGURE 1.
B) WHEN "L" IS $>$ THE STORAGE LENGTH OF THE TURN LANE OR THE TURN LANE IS WITHIN THE LANE CLOSURE, USE FIGURE 2.
2. CONES MAY BE SUBSTITUTED FOR BARRICADES OR DRUMS AT HALF THE SPACING DURING DAY OPERATIONS. CONES SHALL BE A MINIMUM OF 28 (710) IN HEIGHT.
3. LIGHTS WILL NOT BE REQUIRED ON BARRICADES OR DRUMS FOR DAY OPERATIONS. ALL LIGHTS SHALL BE MONODIRECTIONAL.
4. REFLECTIVE TEMPORARY PAVEMENT MARKINGS SHALL BE PLACED THROUGHOUT THE BARRICADED AREAS OF EACH TURN BAY AS SHOWN WHERE THE CLOSURE TIME IS GREATER THAN FOURTEEN (14) DAYS.
5. THIS APPLICATION ALSO APPLIES WHEN WORK IS BEING PERFORMED IN THE RIGHT LANE(S) AND THE RIGHT TURN BAY IS TO REMAIN OPEN. UNDER THIS CONDITION, "RIGHT TURN LANE" R3-1100R 24 x 24 (600 x 600) AND M6-2R 21 x 15 (530 x 380) SHALL BE USED.
6. THESE CONTROLS SHALL SUPPLEMENT MAINLINE TRAFFIC CONTROL FOR LANE CLOSURES.
7. THE SIGNS SHALL BE MOUNTED ABOVE THE BARRICADES/DRUMS ON SEPARATE SIGN SUPPORTS THAT MEET NCHRP 350 OR MASH PREQUIREMENTS.
8. TRAFFIC CONTROL AND PROTECTION AT TURN BAYS (TO REMAIN OPEN TO TRAFFIC) SHALL BE INCLUDED IN THE COST OF SPECIFIED TRAFFIC CONTROL STANDARDS OR ITEMS.

TURN BAY ENTRANCE
WITHIN A LANE CLOSURE

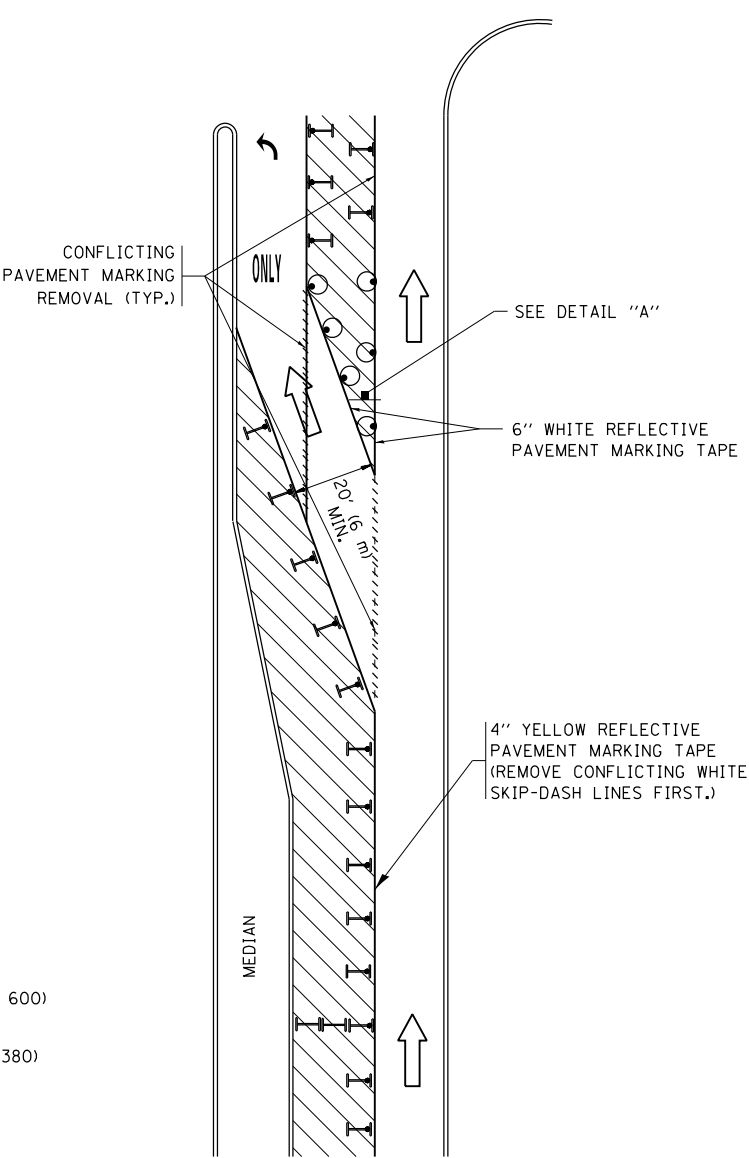
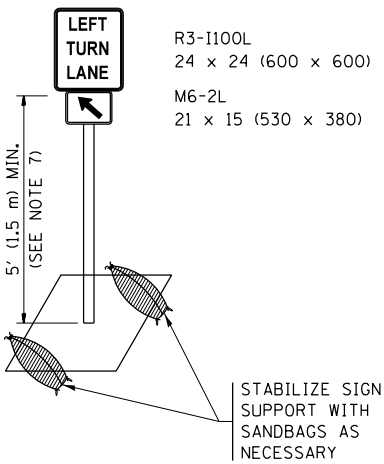


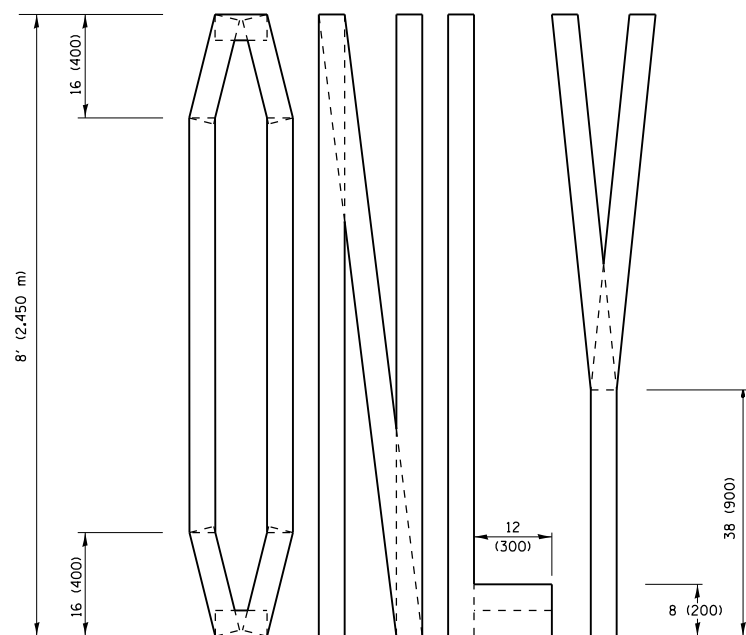
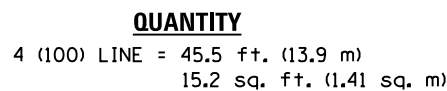
FIGURE 2



DETAIL A

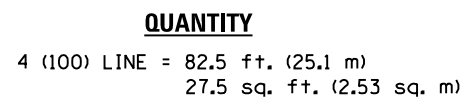
All dimensions are in inches (millimeters) unless otherwise shown.

FILE NAME =	USER NAME = gorengautab	REVISED - T. RAMMACHER 09-08-94	REVISED - R. BORO 09-14-09	STATE OF ILLINOIS DEPARTMENT OF TRANSPORTATION	TRAFFIC CONTROL AND PROTECTION AT TURN BAYS (TO REMAIN OPEN TO TRAFFIC)	F.A.U. RTE.	SECTION	COUNTY	TOTAL SHEETS	SHEET NO.
p:\11\084EBIDINTEG\Illinois.gov\PI\DOT\Documents\DOT Offices\District 1\Projects\012121\Design\A\HOUSEH 11-07-95	REVISOR - A. HOUSEH 11-07-95	REVISED - A. SCHUETZE 07-01-13	REVISED - A. SCHUETZE 07-01-13			2807	1819 RS-5	COOK	32	29
PLOT SCALE = 100.0000' / in.	REVISED - A. HOUSEH 10-12-96	REVISED - A. SCHUETZE 09-15-16	REVISED - A. SCHUETZE 09-15-16			TC-14		CONTRACT NO. 62F82		
Default	PLOT DATE = 3/19/2018	REVISED - T. RAMMACHER 01-06-00	REVISED -			ILLINOIS FED. AID PROJECT				
SCALE: NONE						SHEET 1	OF 1	SHEETS	STA.	TO STA.

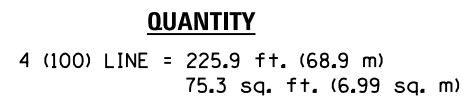


QUANTITY

4 (100) LINE = 64.1 ft. (19.5 m)
21.4 sq. ft. (1.99 sq. m)

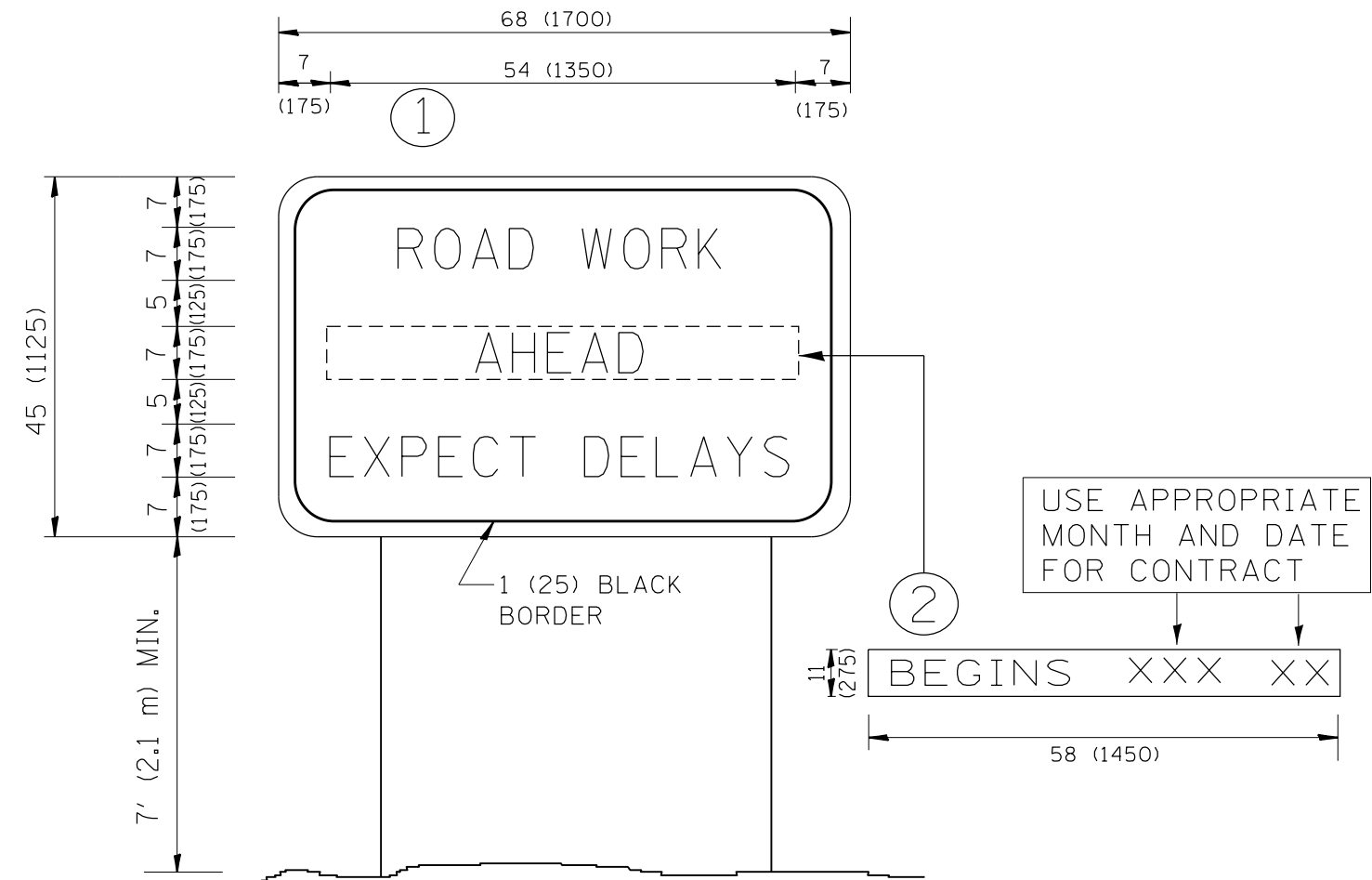


ALL QUANTITIES OF PLACEMENT ARE REPRESENTED
IN LINEAR FEET OF 4" LINES TO MATCH THE
4" TEMPORARY TAPE PAY ITEM AND REPRESENTS
THE TOTAL QUANTITY OF 4" TAPE REQUIRED.



All dimensions are in inches (millimeters) unless otherwise shown.

FILE NAME =	USER NAME = gorengauteb	DESIGNED -	REVISED - T. RAMMACHER 03-02-98	STATE OF ILLINOIS DEPARTMENT OF TRANSPORTATION	SHORT TERM PAVEMENT MARKING LETTERS AND SYMBOLS	F.A.U. RTE.	SECTION	COUNTY	TOTAL SHEETS	SHEET NO.
px\\IL084EBIDINTEGillinois.gov\PIDOT\Documents\DOT Offices\District 1\Projects\012121\BROWN\Note\Design\DistStd.dgn		REVISD - E. GOMEZ 08-28-00				2807	1819 RS-5	COOK	32	30
PLOT SCALE = 100.0010' / in.	CHECKED -	REVISED - E. GOMEZ 08-28-00				TC-16		CONTRACT NO. 62F82		
PLOT DATE = 3/19/2018	DATE - 09-18-94	REVISED - A. SCHUETZE 09-15-16				SCALE: NONE	SHEET NO. 1 OF 1 SHEETS	STA.	TO STA.	
						FED. ROAD DIST. NO. 1 ILLINOIS FED. AID PROJECT				



NOTES:

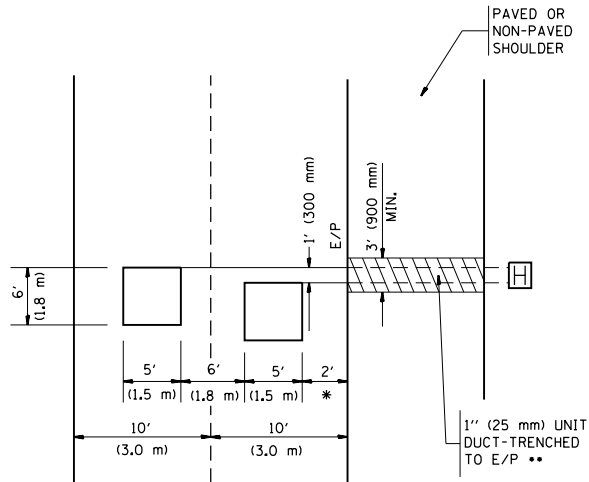
1. USE BLACK LETTERING ON ORANGE BACKGROUND.
2. ERECT SIGNS IN ADVANCE OF THE LOCATION FOR THE "ROAD CONSTRUCTION AHEAD" SIGN AT LOCATIONS AS DIRECTED BY THE ENGINEER.
3. ERECT SIGN ① WITH INSTALLED PANEL ② ONE WEEK PRIOR TO THE START OF CONSTRUCTION.
4. REMOVE PANEL ② SOON AFTER THE START OF CONSTRUCTION.
5. SEE SPECIAL PROVISION FOR "TEMPORARY INFORMATION SIGNING" FOR ADDITIONAL INFORMATION.
6. ONE SIGN ASSEMBLY EQUALS 25.70 SQ. FT. (2.3 SQ. M.)
7. SHALL BE PAID FOR AS TEMPORARY INFORMATION SIGNING.

ALL DIMENSIONS ARE IN INCHES (MILLIMETERS)
UNLESS OTHERWISE SHOWN.

FILE NAME = p:\11\084EBID\INTEG\Illinois.gov\PWIDOT\Documents\IDOT Offices\District 1\Projects\DI2121\BROWN\Design\DistStd.dgn	USER NAME = gorengautab	DESIGNED -	REVISED - R. MIRS 09-15-97	STATE OF ILLINOIS DEPARTMENT OF TRANSPORTATION	ARTERIAL ROAD INFORMATION SIGN				F.A.U. RTE.	SECTION	COUNTY	TOTAL SHEETS	SHEET NO.
			REVISED - R. MIRS 12-11-97						2807	1819 RS-5	COOK	32	31
	PLOT SCALE = 100.0000 ' / in.	CHECKED -	REVISED - T. RAMMACHER 02-02-99		SCALE: NONE			SHEET NO. 1 OF 1 SHEETS	STA.	TO STA.	FED. ROAD DIST. NO. 1 ILLINOIS FED. AID PROJECT		
	PLOT DATE = 3/19/2018	DATE -	REVISED - C. JUCIUS 01-31-07								CONTRACT NO. 62F82		

LOOPS NEXT TO SHOULDERS

PROVIDE A PAVEMENT REPLACEMENT
NOTE WHICH SHOULD EQUAL
3' (900 mm) X WIDTH OF
PAVED SHOULDER.



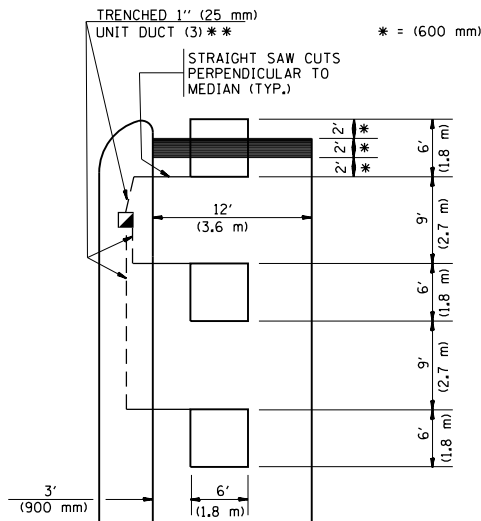
* = (600 mm)

** UNIT DUCT IS TO BE SHOWN ON PLAN SHEETS
BUT SHALL NOT BE INCLUDED IN THE PAY ITEMS.

LEFT TURN LANES WITH MEDIANS
VOLUME DENSITY ("FAR OUT" DETECTION)
ON SAME APPROACH

(PROTECTED / PERMITTED LEFT TURN PHASING)

HANDHOLE LOCATION MAY
VARY DEPENDING ON GEOMETRICS
AND DESIGN OF TRAFFIC SIGNALS.
HEAVY-DUTY HANDHOLES TO BE
USED WHEN THE MEDIAN IS
MOUNTABLE. REFER TO STANDARD
814001 TO ENSURE THAT HANDHOLE
FITS IN MEDIAN.

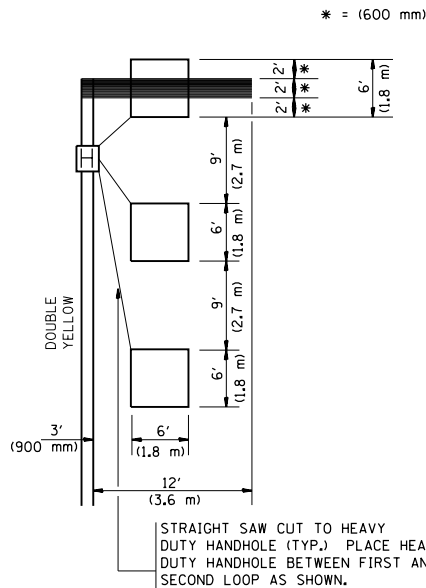


** UNIT DUCT IS TO BE SHOWN ON PLAN SHEETS
BUT SHALL NOT BE INCLUDED IN THE PAY ITEMS.

NOTE: DUAL LEFT TURNS NOT SHOWN REFER TO
PLAN SHEET FOR DETECTOR LOOP REPLACEMENT

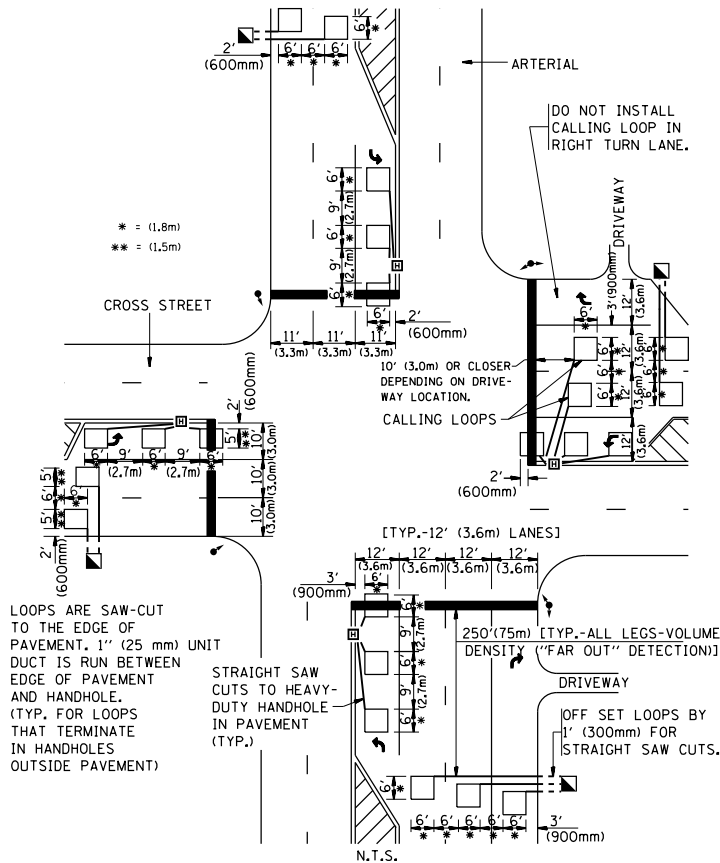
LEFT TURN LANES WITHOUT MEDIANS
VOLUME DENSITY ("FAR OUT" DETECTION)
ON SAME APPROACH

(PROTECTED / PERMITTED LEFT TURN PHASING)



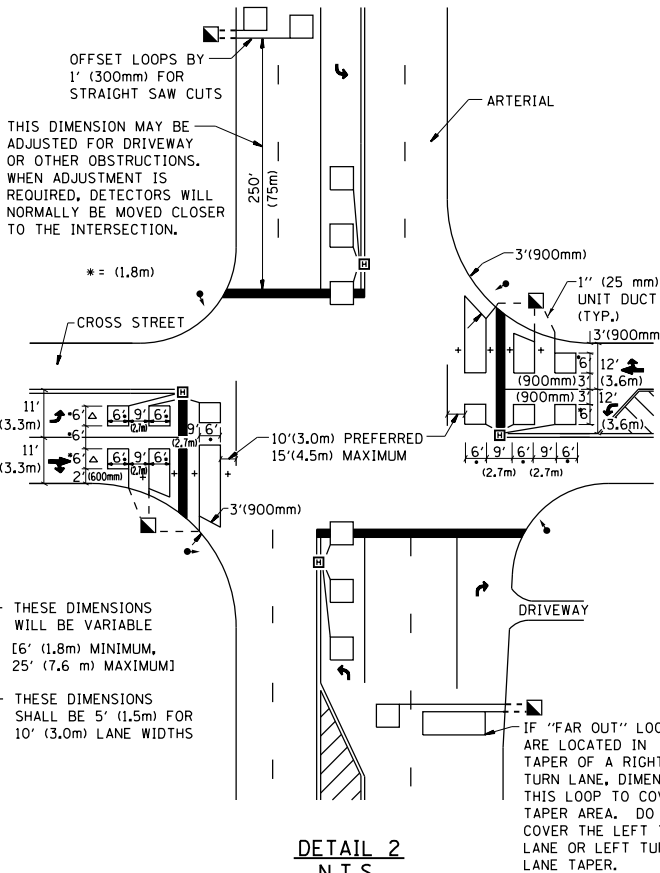
NOTE: DUAL LEFT TURNS NOT SHOWN REFER TO
PLAN SHEET FOR DETECTOR LOOP REPLACEMENT

ARTERIAL-VOLUME DENSITY ("FAR OUT" DETECTION)
CROSS STREET-VOLUME DENSITY ("FAR OUT" DETECTION)



DETAIL 1
N.T.S.

ARTERIAL-VOLUME DENSITY ("FAR OUT" DETECTION)
CROSS STREET-NON VOLUME DENSITY ("UPTIGHT" PRESENCE DETECTION)



DETAIL 2
N.T.S.

NOTES:

VEHICLES LOOP DETECTORS

- * ALL LEAD IN CABLE SHALL BE TWO CONDUCTOR NO. 14 TWISTED, SHIELDED.
- * EACH DETECTOR LOOP SHALL HAVE ITS OWN SAW CUT FROM THE LOOP TO THE EDGE OF PAVEMENT OR TO A HANDHOLE IN THE PAVEMENT.
- * EACH DETECTOR LOOP SHALL HAVE ITS OWN ONE INCH (25 mm) UNIT DUCT BETWEEN THE EDGE OF PAVEMENT AND THE FIRST HANDHOLE OR JUNCTION BOX. EACH UNIT DUCT RUN SHALL BE SHOWN ON THE PLANS BY THE DESIGNER, BUT SHALL NOT BE PAID FOR SEPARATLY. THIS ITEM IS INCIDENTAL TO THE PAY ITEM FOR DETECTOR LOOPS.
- * ONE DIMENSION OF ALL DETECTOR LOOPS SHALL BE SIX FEET (1.8 m)
- * EACH LANE OF NON-LOCKING, PRESENCE DETECTION AND EACH LANE OF A DOUBLE LEFT TURN LANE REQUIRES A SEPARATE INDUCTIVE LOOP DETECTOR AND LEAD IN CABLE.
- * WHEN NON-LOCKING, PRESENCE DETECTION IS USED, MORE THAN ONE LOOP PER LANE IS REQUIRED BEHIND THE STOP BAR (i.e. 1-1/2, 1-3/4, 2).
- * WHEN SYSTEM LOOPS ARE REQUIRED ON AN APPROACH OF AN INTERSECTION, THE LOOPS USED FOR VOLUME DENSITY AND INTERSECTION TIMING SHALL ALSO BE USED AS SYSTEM DETECTORS. EACH ONE OF THESE TYPE OF LOOPS REQUIRES A SEPARATE TWO CONDUCTOR NO. 14 TWISTED SHIELDED CABLE AND A SEPARATE INDUCTIVE LOOP DETECTOR WHEN NEW CONTROLLERS ARE UTILIZED. THE DESIGNER SHALL LABEL THESE TYPES OF LOOPS AS "INTERSECTION AND SAMPLING (SYSTEM) DETECTORS" ON THE SIGNAL LAYOUT, THE INTERCONNECT PLAN AND THE SYSTEM CABLE PLAN. WHEN AN EXISTING CONTROLLER IS UTILIZED FOR THIS TYPE OF DETECTION, THE PAY ITEM "INDUCTIVE LOOP DETECTOR WITH SYSTEM OUTPUT" SHOULD BE USED.

PLACEMENT OF DETECTORS

THE FOLLOWING FIGURES REPRESENT THE MOST COMMON DETECTOR LOOP LOCATIONS AND SIZES. ADJUSTMENTS WILL BE NECESSARY FOR SPECIFIC GEOMETRIC CONSIDERATIONS.

LOCATIONS AND DEMENSIONS OF DETECTOR LOOPS ARE REQUIRED ON ALL SIGNAL LAYOUT PLAN SHEETS.

"FAR OUT" DETECTION REFERS TO LOCKING, PRESENCE TYPE DETECTION LOCATED IN THRU LANES, RIGHT TURN LANES, AND RIGHT TURN LANE TAPER AREAS (IF APPLICABLE), USUALLY 250' (75 m) IN ADVANCE OF STOP BARS. "UPTIGHT" DETECTION REFERS TO NON-LOCKING PRESENCE TYPE DETECTION LOCATED IN ALL LANES AND 10'-15' (3.0 m-4.5 m) BEHIND THE CROSSING STREET'S EDGE OF PAVEMENT EXTENDED.

NOTE:

ALL DETAILS AND NOTES SHOWN ARE FROM THE I.D.O.T. DISTRICT 1 TRAFFIC SIGNAL DESIGN GUIDELINES DATED JANUARY 1995

THIS DRAWING HAS BEEN PREPARED TO ASSIST THE RESIDENT ENGINEER FOR ALL ROADWAY RESURFACING OR S.M.A.R.T. PROJECTS WHERE THE DIMENSIONS ARE NOT SHOWN ON THE PLANS AND THE FINAL LOCATIONS FOR CROSSWALKS OR STOP BARS ARE NOT DETERMINED.

FILE NAME =	USER NAME = gorengautab	DESIGNED -	REVISED -	STATE OF ILLINOIS DEPARTMENT OF TRANSPORTATION	DISTRICT 1 – DETECTOR LOOP INSTALLATION DETAILS FOR ROADWAY RESURFACING			F.A.U. RTE.	SECTION	COUNTY	TOTAL SHEETS	SHEET NO.
p:\w\11084EBID\INTEG\Illinois.gov\PI\DOT\Documents\DOT Offices\District 1\Projects\DI2121\BROWN\Note\Design\DistStd.dgn		REVIS	REVIS					2807	1819 RS-5	COOK	32	32
PLOT SCALE = 100.0000' / in.		CHECKED - R.K.F.	REVIS					TS-07		CONTRACT NO. 62F82		
PLOT DATE = 3/19/2018		DATE -	REVIS					FED. ROAD DIST. NO. 1 ILLINOIS FED. AID PROJECT				
								SCALE: NONE	SHEET NO. 1 OF 1	SHEETS	STA.	TO STA.