

UN051

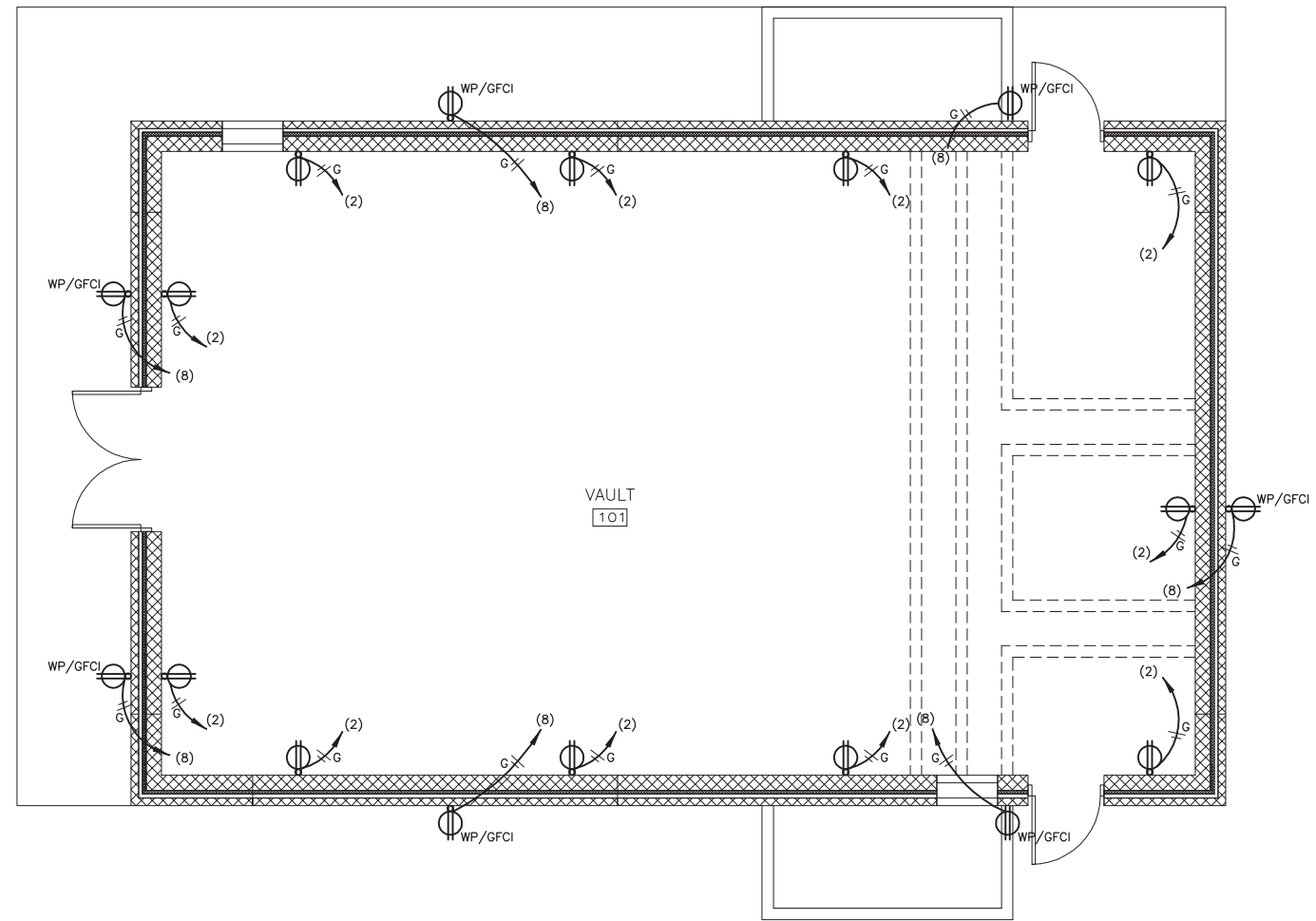
REVISIONS

NUMBER	BY	DATE

0 1 2
 THIS BAR IS EQUAL TO 2"
 AT FULL SCALE (34X22).

RECEPTACLE PLAN NOTES

1. INTERIOR RECEPTACLES SHALL BE 20 AMP, 125 VOLT, 3 WIRE GROUNDING TYPE, NEMA 5-20R, BACK AND SIDE WIRE COMPATIBLE, HEAVY DUTY INDUSTRIAL SPECIFICATION GRADE. RECEPTACLES SHALL BE PASS & SEYMOUR 2095, OR EQUIVALENT.
2. EXTERIOR GFCI RECEPTACLES SHALL MEET NATIONAL ELECTRICAL CODE WEATHER-RESISTANT REQUIREMENTS, SHALL BE LISTED TO THE WEATHER-RESISTANT SUPPLEMENT OF UL498, AND SHALL EXCEED UL CORROSION REQUIREMENTS. RUBBER CURTAINS SHALL LET PLUG BLADES IN, KEEP DUST, WATER AND INSECTS OUT. PROVIDE INTEGRAL GASKET TO SEAL RECEPTACLE. RECEPTACLES SHALL BE OF HIGH-IMPACT-RESISTANT THERMOPLASTIC CONSTRUCTION WITH MATCHING NYLON WALL PLATE. GFCI RECEPTACLES SHALL BE PASS & SEYMOUR CAT. # 2095DSWRBK, OR EQUIVALENT MEETING REQUIREMENTS NOTED.
3. ALL RECEPTACLE COVERS NOTED AS "WEATHERPROOF" WITH THE LETTERS "WP" OR INSTALLED OUTDOORS SHALL COMPLY WITH NEC ARTICLE 406.9B1. UNITS SHALL REMAIN RAIN-TIGHT WHETHER OR NOT A PLUG AND CORD IS INSERTED. COVERS SHALL BE EXTRA-DEEP, PADLOCKABLE, CAST ALUMINUM CONSTRUCTION, AS MANUFACTURED BY HUBBELL, WP26MH, OR EQUIVALENT, HORIZONTAL, FOR USE WITH GFCI RECEPTACLES.



RECEPTACLE PLAN VIEW
 N.T.S.

**WILLARD AIRPORT
 UNIVERSITY OF ILLINOIS
 NEW AIRFIELD LIGHTING VAULT
 NEW VAULT RECEPTACLE PLAN**

© Copyright CMT, Inc.
CMT
 CRAWFORD, MURPHY & TILLY, INC.
 CONSULTING ENGINEERS
 License No. 184-000613

DESIGN BY: WDP
 DRAWN BY: CMT
 CHECKED BY: JEH
 APPROVED BY: JEH
 DATE: APRIL 20, 2012
 JOB No: 11059-03

IL PROJ. NO. CMI-4100
 AIP PROJ. NO. 3-17-0016-XX