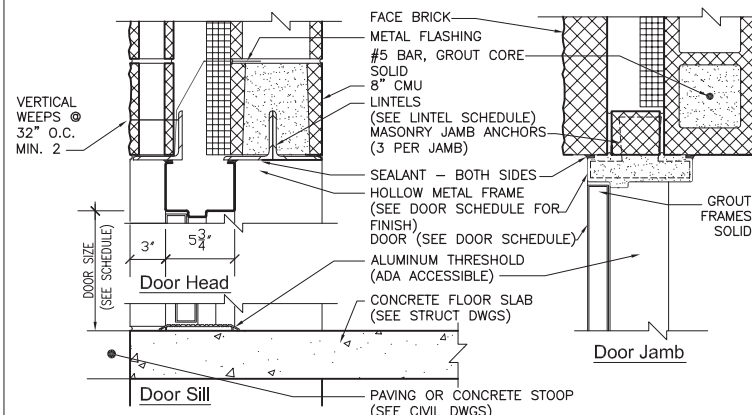
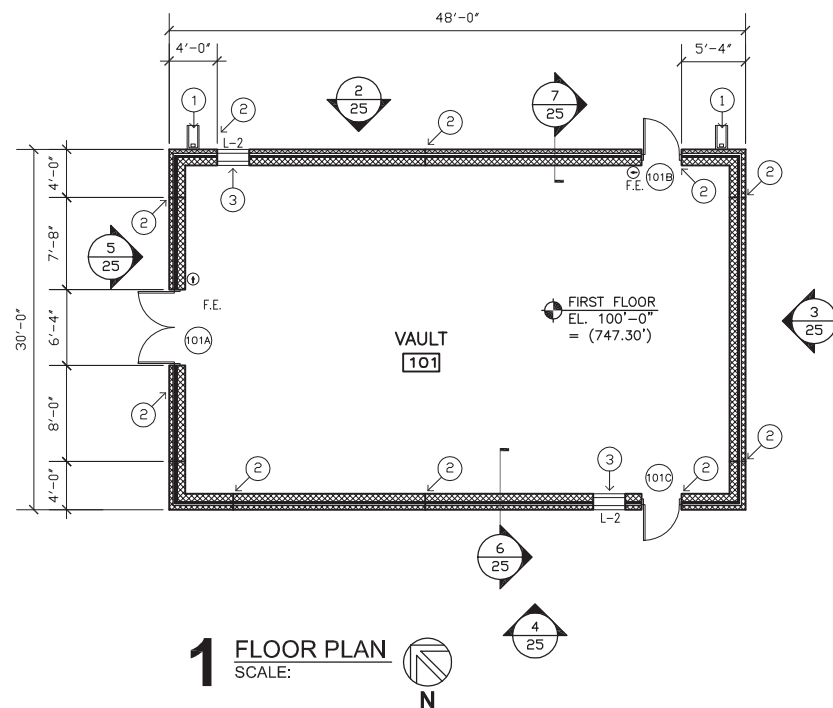


**GENERAL NOTES:**

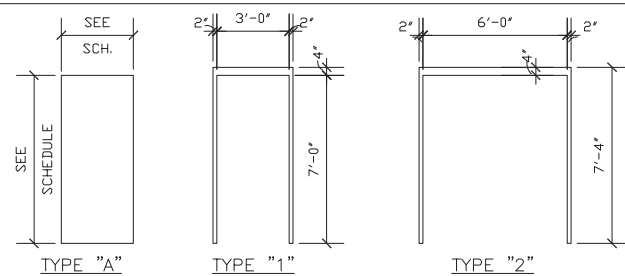
1. ALL CONCRETE FLOOR CONTROL JOINTS TO BE SEALED WITH ELASTOMERIC SEALANT.
2. CONCRETE SLABS TO BE FINISHED WITH KURE-N-SEAL.
3. INTERIOR CMU WALLS TO BE PRIMED AND FINISH PAINTED WITH 2 COATS.
4. SEE LINTEL SCHEDULE FOR DOOR AND LOUVER LOCATIONS.

**KEYED NOTES:**

- 1 → CONCRETE SPLASH BLOCK.
- 2 → CONTROL JOINT THROUGH BLOCK WALL ASSEMBLY.
- 3 → LOUVER (SEE M.E.P. DRAWINGS)



**8 DOOR DETAIL**  
SCALE: 1 1/2" = 1'-0"

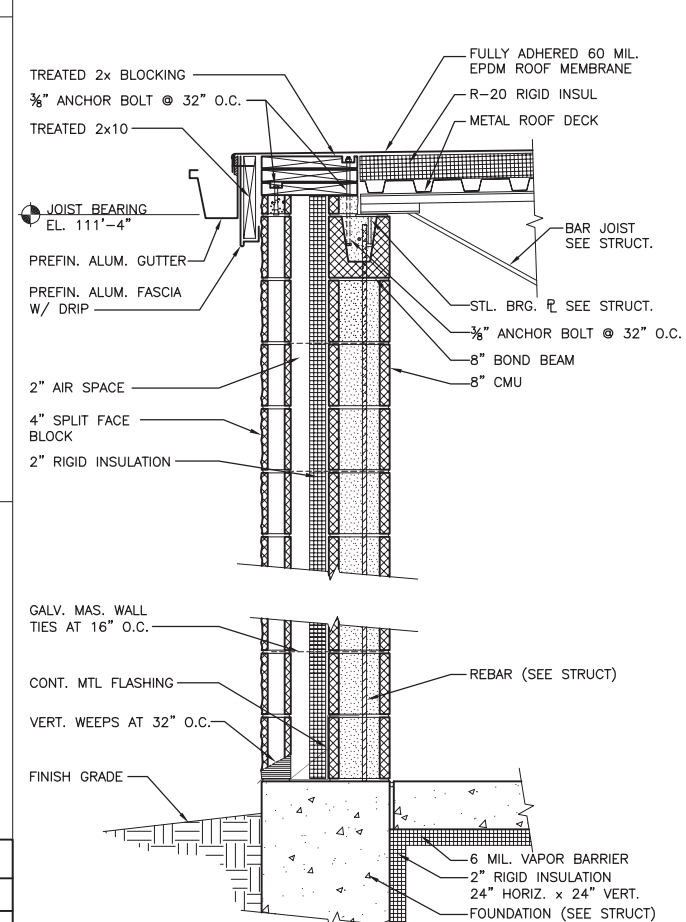


**DOOR AND FRAME TYPES**  
SCALE: 1/4" = 1'-0"

**LINTEL SCHEDULE**

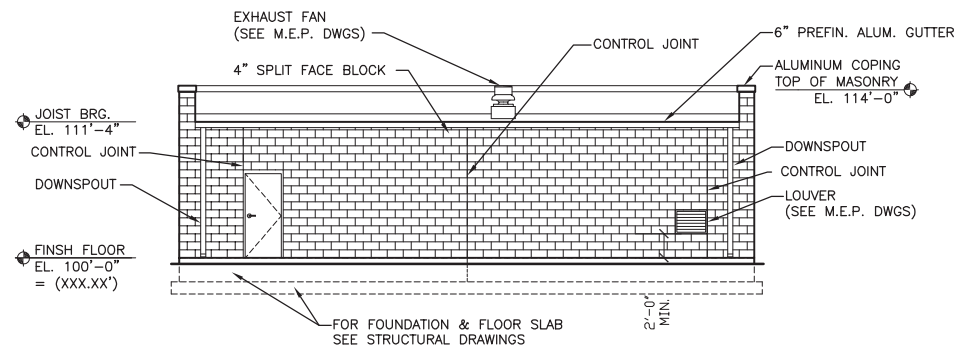
NO.	SIZE	SHAPE	M.O.	BRG. LENGTH	REMARKS
L-1	3-L3/8x3 1/2x1/4	J	6'-4"	8"	BOTH WYTHES
L-2	3-L3/8x3 1/2x1/4	J	3'-4"	8"	BOTH WYTHES

NOTE: 1. GALVANIZED LINTELS TYPICAL. (PAINT)

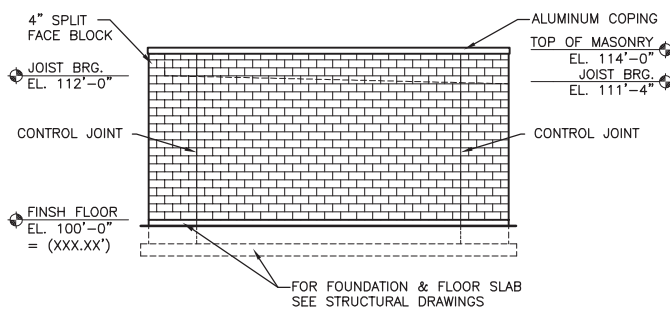


**7 WALL SECTION**  
SCALE: 1" = 1'-0"

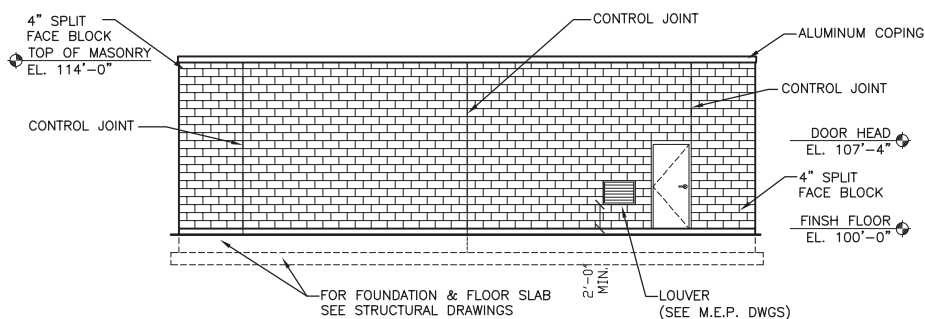
NO.	DOOR				FRAME					DETAILS THIS SHEET	HARDWARE GROUP	LINTEL	REMARKS			
	SIZE	MAT'L	FINISH	CORE	TYPE	ELEV.	MAT'L	FINISH	WALL CONST.					HEAD	JAMB	SILL
101A	2 @ 3'-0" x 7'-0" x 1 3/4"	MTL	PNT	INSUL	A	2	MTL	PNT	CMU	--	8	8	8	A	L-1	--
101B	3'-0" x 7'-0" x 1 3/4"	MTL	PNT	INSUL	A	2	MTL	PNT	CMU	--	8	8	8	B	L-2	--
101C	3'-0" x 7'-0" x 1 3/4"	MTL	PNT	INSUL	A	1	MTL	PNT	CMU	--	8	8	8	A	L-2	--



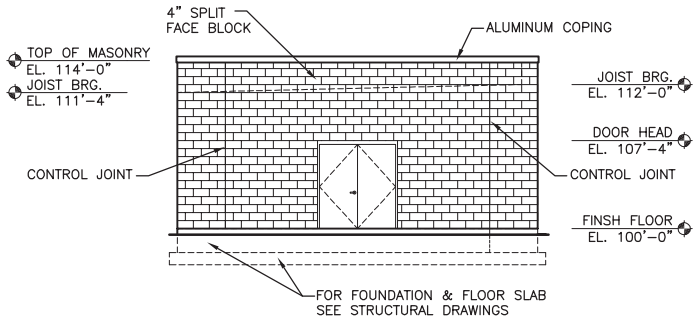
**2 NORTH ELEVATION**  
SCALE: 1/8" = 1'-0"



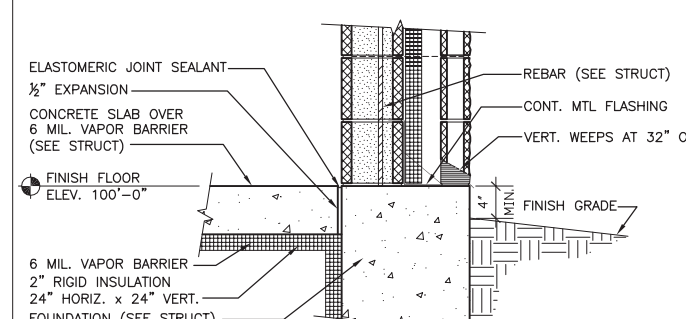
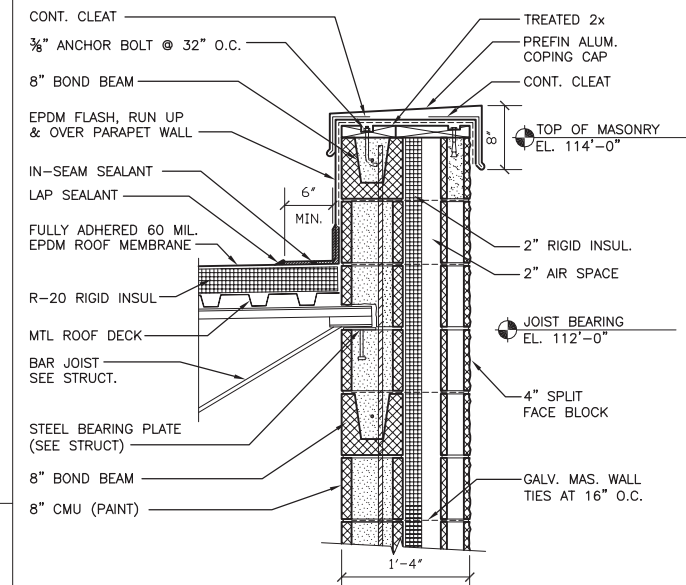
**3 EAST ELEVATION**  
SCALE: 1/8" = 1'-0"



**4 SOUTH ELEVATION**  
SCALE: 1/8" = 1'-0"



**5 WEST ELEVATION**  
SCALE: 1/8" = 1'-0"

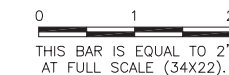


**6 WALL SECTION**  
SCALE: 1" = 1'-0"

K:\Champaign\1105903\Draw\Sheets  
FILE: 1105903-A-1001.dwg  
UPDATE BY: Chris Groth  
PLOT DATE: 4/30/2012 3:52 PM  
X-Flr Plan  
X\_Exterior Elevations

**UN051**

REVISIONS		
NUMBER	BY	DATE



WILLARD AIRPORT  
UNIVERSITY OF ILLINOIS

NEW AIRFIELD LIGHTING VAULT  
FLOOR PLANS, WALL SECTIONS, & DETAILS

© Copyright CMT, Inc.  
**CMT**  
CRAWFORD, MURPHY & TILLY, INC.  
CONSULTING ENGINEERS  
License No. 184-000613

DESIGN BY:	SLR
DRAWN BY:	CMT
CHECKED BY:	GTC
APPROVED BY:	GTC
DATE:	APRIL 20, 2012
JOB No:	11059-03

IL PROJ. NO. CMI-4100  
AIP PROJ. NO. 3-17-0016-XX