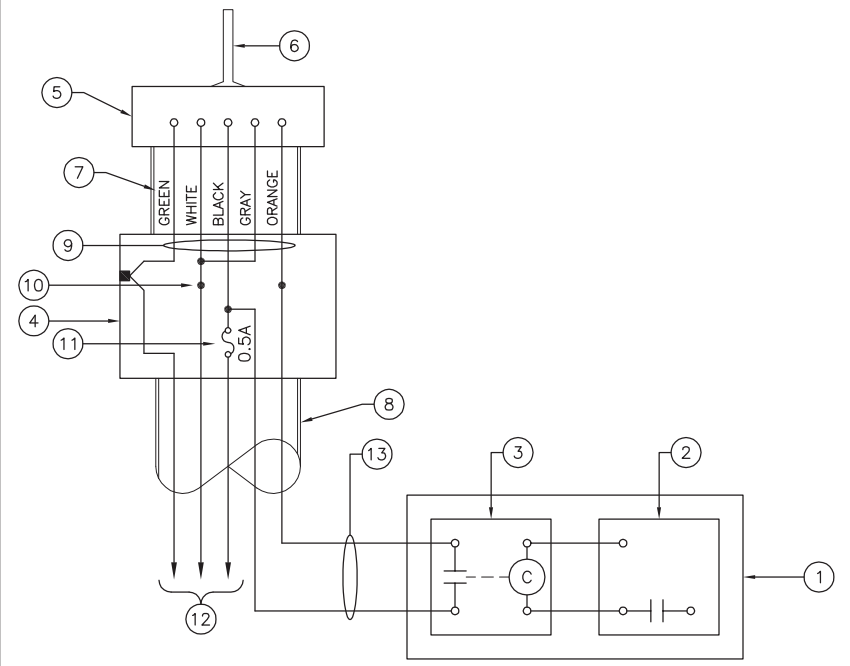


UN051

REVISIONS		
NUMBER	BY	DATE

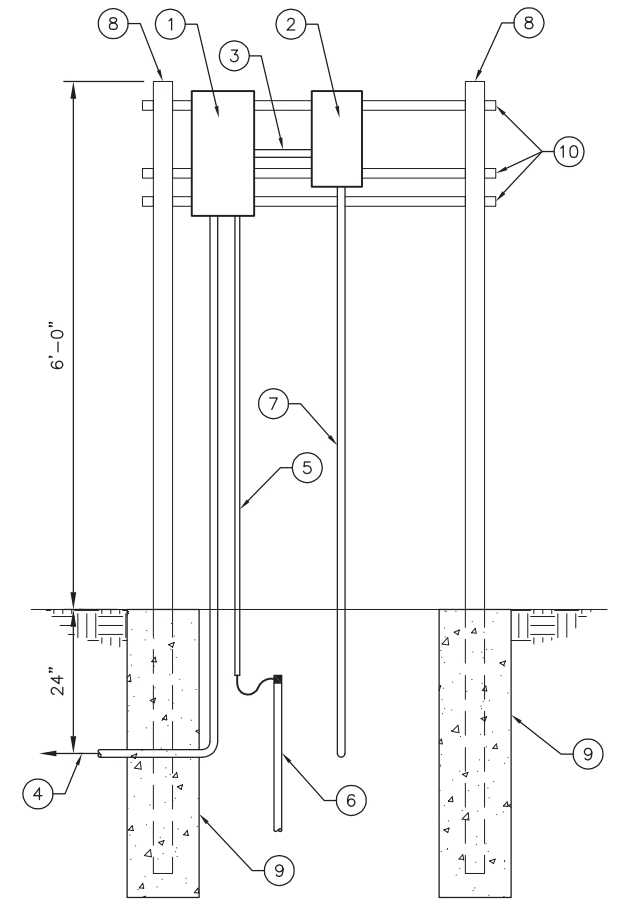
0 1 2
 THIS BAR IS EQUAL TO 2"
 AT FULL SCALE (34X22).



BEACON RADIO TRANSMITTER WIRING
 (LOCATED AT ATCT)

BEACON RADIO TRANSMITTER WIRING KEYED NOTES

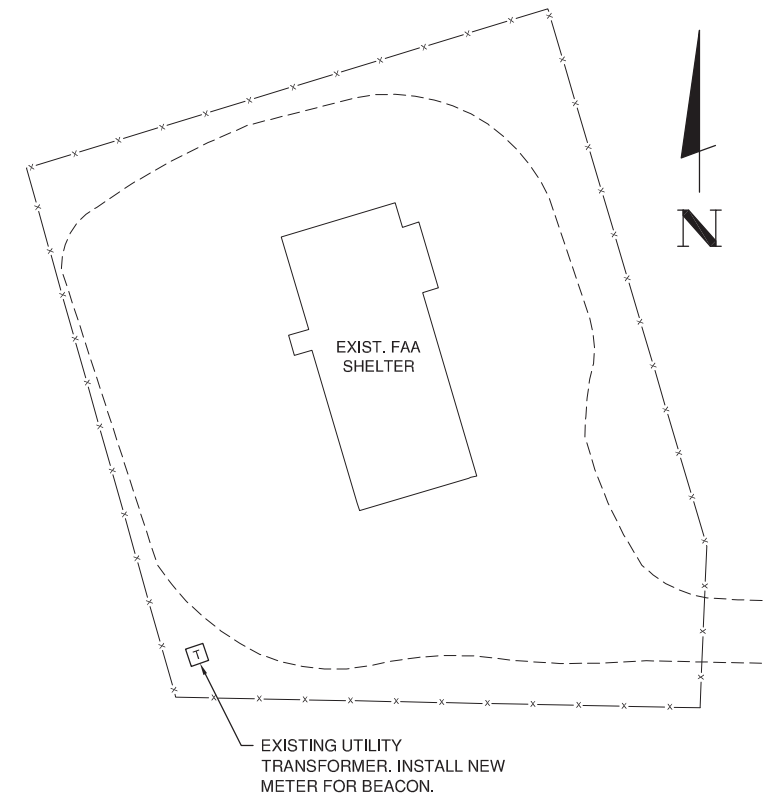
- PROGRAMMABLE LOGIC CONTROLLER (PLC), LOCATED IN CONTROL TOWER L-890 SYSTEM EQUIPMENT ENCLOSURE. FURNISHED BY L-890 SYSTEM SUPPLIER.
- PLC DISCRETE OUTPUT.
- PLC INTERPOSING RELAY WITH FORM C, 5A (MIN.), 120V CONTACTS. FURNISHED BY L-890 SYSTEM SUPPLIER.
- NEMA 4X HINGED COVER ENCLOSURE, SIZED AS REQUIRED. MOUNT TO TOWER CAB CATWALK HANDRAIL. PROVIDE INTERNAL GROUND LUG.
- 900 MHZ RADIO TRANSMITTER. MOUNT ON TOWER CAB CATWALK TO PROVIDE LINE-OF-SIGHT WITH NEW BEACON.
- ANTENNA MOUNTED ON TOP OF TRANSMITTER.
- 3/4" GRS CONDUIT.
- 3/4" GRS CONDUIT TO CONTROL TOWER L-890 SYSTEM EQUIPMENT ENCLOSURE.
- RADIO TRANSMITTER WIRING PIGTAILS.
- SPLICE (TYP.)
- 0.5A FAST BLOW IN-LINE FUSE AND FUSEHOLDER.
- TWO #12 THWN (120V), ONE #12 GROUND TO UPS IN CONTROL TOWER L-890 SYSTEM EQUIPMENT ENCLOSURE.
- 2/C #14, 300V CABLE.



BEACON SERVICE ELEVATION
 N.T.S.

BEACON SERVICE KEYED NOTES

- SERVICE ENTRANCE RATED DISCONNECT, HEAVY-DUTY, 30A, 240V, 3-WIRE (2 FUSEHOLDERS, 1 NEUTRAL), IN NEMA 3R ENCLOSURE, WITH TWO 15A FUSES. BOND NEUTRAL BAR AND GROUND BAR INSIDE DISCONNECT.
- 3KVA, 240 x 480V STEP-UP TRANSFORMER, SQUARED 351F, OR EQUIVALENT.
- TWO #12 THWN, ONE #12 GROUND IN 3/4" GRS CONDUIT.
- TWO # 12 THWN, ONE #12 NEUTRAL IN 1" PVC CONDUIT TO EXISTING UTILITY TRANSFORMER. 120/240V SINGLE-PHASE SERVICE. A NEW UTILITY METER SHALL BE INSTALLED PER UTILITY REQUIREMENTS AT TRANSFORMER TO METER THIS SERVICE.
- #6 GROUNDING ELECTRODE CONDUCTOR (GEC) IN 1/2" SCHEDULE 40 PVC CONDUIT TO MINIMUM 1'-0" BELOW GRADE.
- 3/4" DIAMETER X 10 FOOT LONG COPPERCLAD GROUND ROD. CONNECTION TO GEC SHALL BE VIA EXOTHERMIC WELD, CADWELD OR EQUIVALENT.
- TWO #8, 600V USE (480V), ONE #8 GROUND IN 1" GRS CONDUIT TO 24" BELOW GRADE AND THEN IN UNIT DUCT TO NEW BEACON LOCATION.
- 3" GALVANIZED STEEL SUPPORT POST, PAINTED WITH MINIMUM TWO COATS YELLOW EPOXY PAINT.
- 12" DIAMETER BY 48" DEEP CONCRETE FOOTING.
- GALVANIZED STEEL STRUT-TYPE FRAMING, UNISTRUT P-1000, OR EQUIVALENT, AS NEEDED.



EXISTING UTILITY TRANSFORMER SITE PLAN
 N.T.S.

**WILLARD AIRPORT
 UNIVERSITY OF ILLINOIS**

**NEW AIRFIELD LIGHTING VAULT
 BEACON DETAILS 2**

© Copyright CMT, Inc.



DESIGN BY:	WDP
DRAWN BY:	CMT
CHECKED BY:	CBG
APPROVED BY:	CET
DATE:	APRIL 20, 2012
JOB No:	11059-03