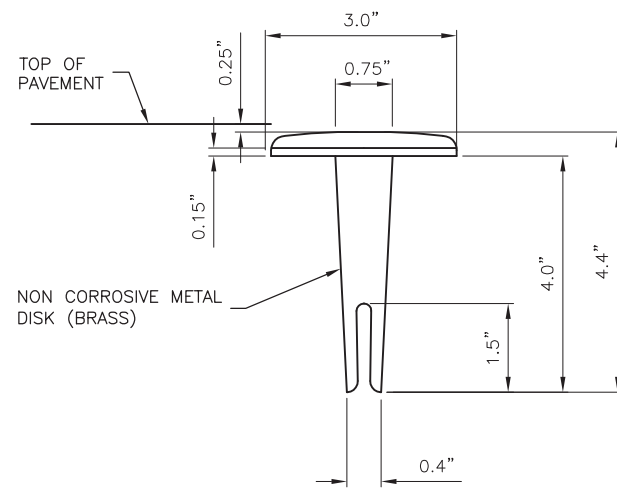
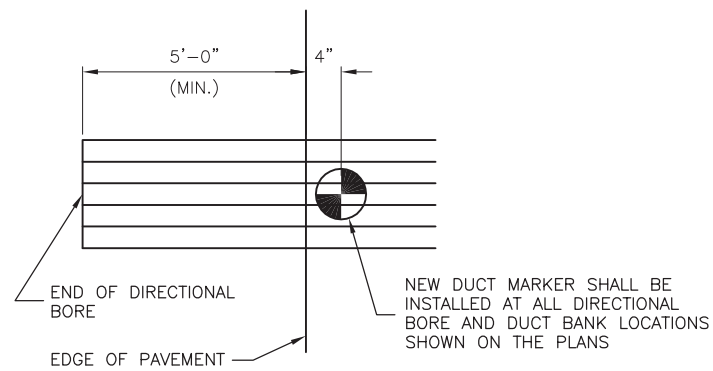


TYPE, NUMBER OF
DUCTS AND DUCT SIZE
STAMPED ON MARKER

PLAN



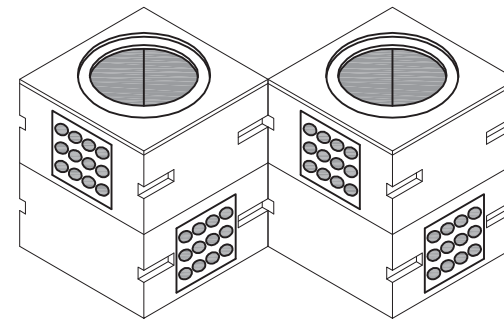
SECTION



DUCT MARKERS SHALL BE RECESSED
AND GROUTED INTO THE PAVEMENTS.

MARKER PLACEMENT

DUCT MARKER DETAILS
N.T.S.

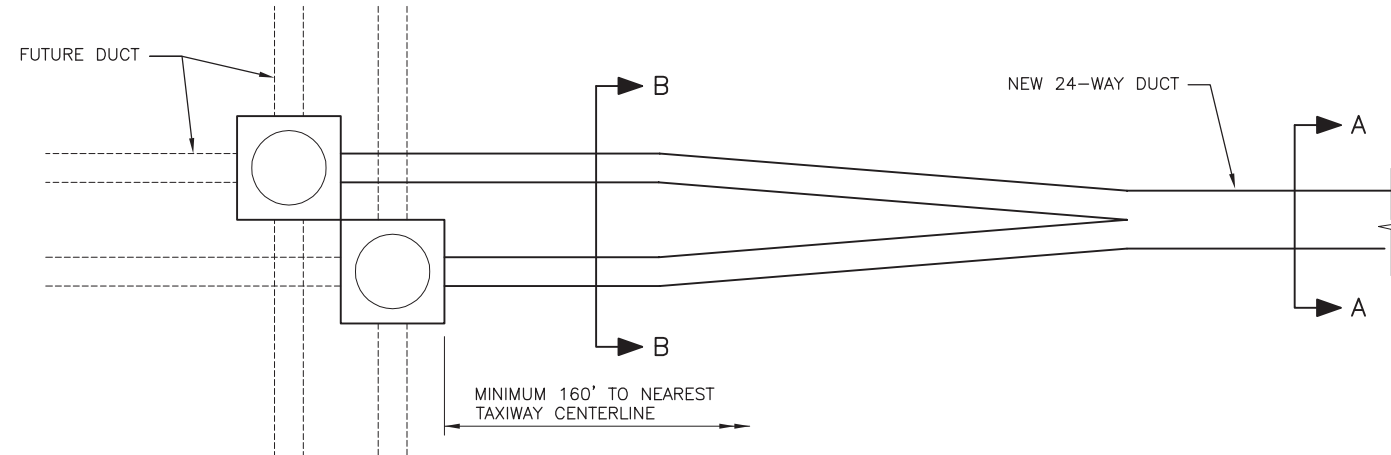


ELECTRICAL HANDHOLE PLAZA NOTES

1. ELECTRICAL HANDHOLE PLAZAS SHALL CONSIST OF A SERIES OF 2 ELECTRICAL HANDHOLES.
2. ELECTRICAL HANDHOLES SHALL BE AS DETAILED AND SPECIFIED ON ELECTRICAL DETAILS SHEET 4.
3. HANDHOLE PLAZA LIDS SHALL BE MARKED "HIGH VOLTAGE" AND "LOW VOLTAGE". THE HIGH VOLTAGE HANDHOLE SHALL CONTAIN SERIES CIRCUIT HOMERUN CABLES FOR THE TAXIWAY AND RUNWAY CIRCUITS. THE LOW VOLTAGE HANDHOLE SHALL CONTAIN POWER CABLES LESS THAN 480V FOR THE PAPIs, RGLs, AND WINDCONE. THE LOW VOLTAGE HANDHOLE SHALL ALSO CONTAIN THE FIBER OPTIC AND CONTROL CABLE.

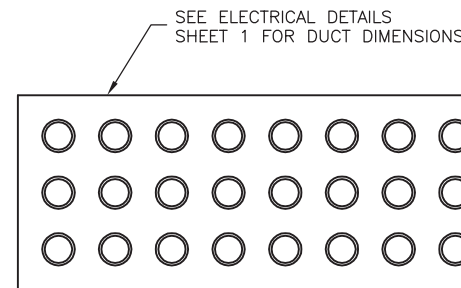
ELECTRICAL HANDHOLE PLAZA DETAIL

N.T.S.

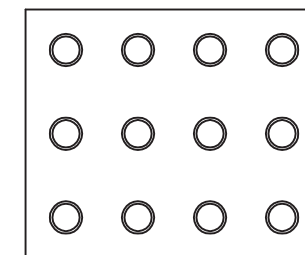


DUCT TO ELECTRICAL HANDHOLE
PLAZA TRANSITION DETAIL

N.T.S.



SECTION A-A

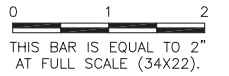


SECTION B-B

UN051

REVISIONS

NUMBER	BY	DATE



WILLARD AIRPORT
UNIVERSITY OF ILLINOIS

NEW AIRFIELD LIGHTING VAULT
ELECTRICAL DETAILS 3

© Copyright CMT, Inc.

CMT
CRAWFORD, MURPHY & TILLY, INC.
CONSULTING ENGINEERS
License No. 184-000613



DESIGN BY:	CBG/WDP
DRAWN BY:	CMT
CHECKED BY:	CET
APPROVED BY:	CET
DATE:	APRIL 20, 2012
JOB No:	11059-03
IL PROJ. NO.	CMI-4100
AIP PROJ. NO.	3-17-0016-XX
SHEET	25 OF 60 SHEETS