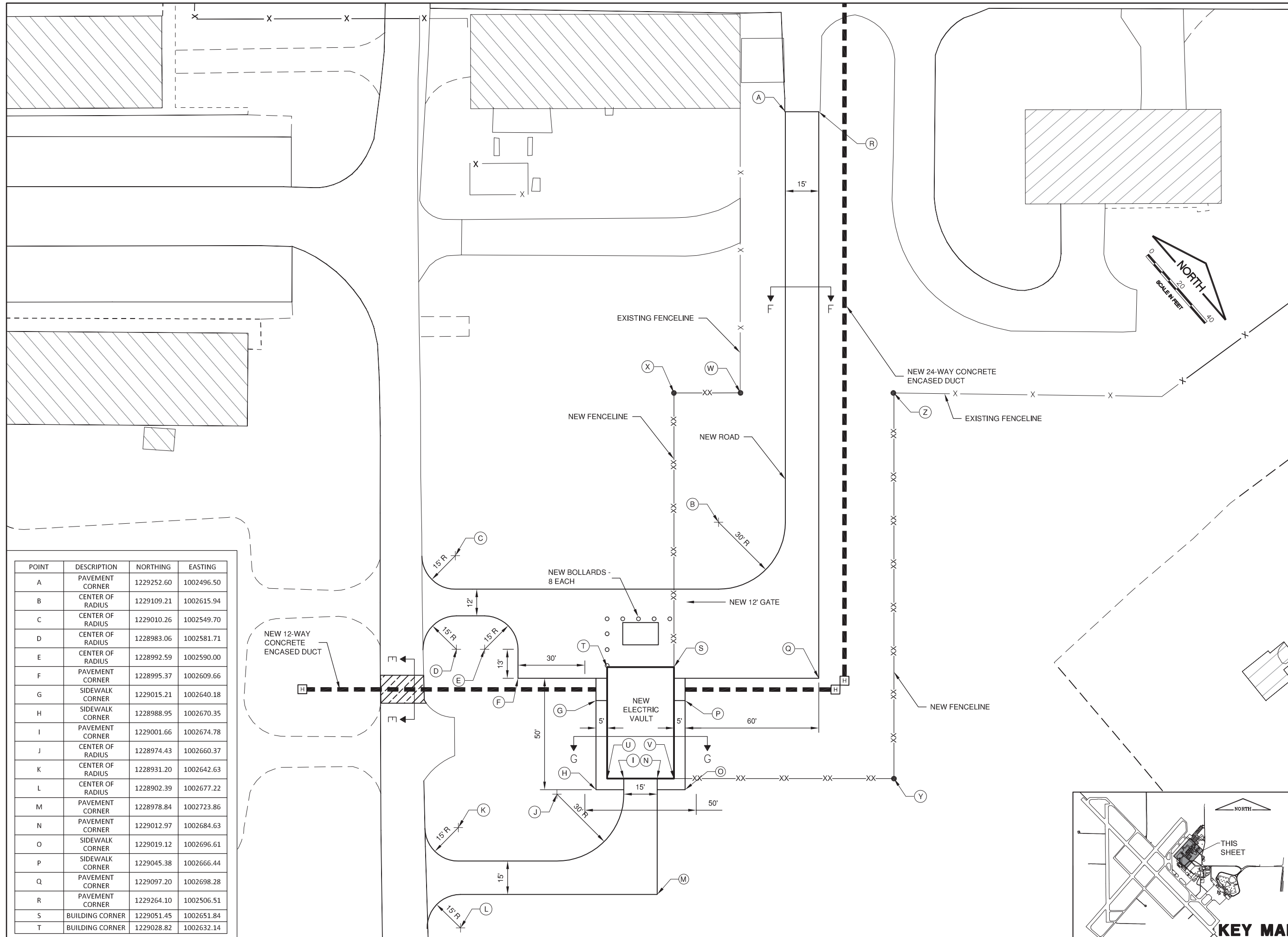
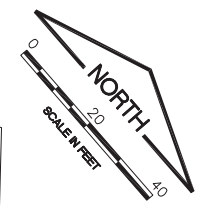
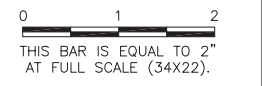


**UN051**

REVISIONS		
NUMBER	BY	DATE

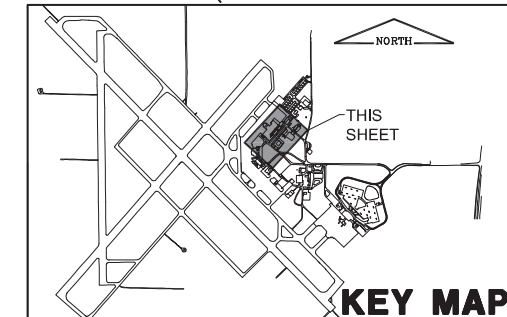


POINT	DESCRIPTION	NORTHING	EASTING
A	PAVEMENT CORNER	1229252.60	1002496.50
B	CENTER OF RADIUS	1229109.21	1002615.94
C	CENTER OF RADIUS	1229010.26	1002549.70
D	CENTER OF RADIUS	1228983.06	1002581.71
E	CENTER OF RADIUS	1228992.59	1002590.00
F	PAVEMENT CORNER	1228995.37	1002609.66
G	SIDEWALK CORNER	1229015.21	1002640.18
H	SIDEWALK CORNER	1228988.95	1002670.35
I	PAVEMENT CORNER	1229001.66	1002674.78
J	CENTER OF RADIUS	1228974.43	1002660.37
K	CENTER OF RADIUS	1228931.20	1002642.63
L	CENTER OF RADIUS	1228902.39	1002677.22
M	PAVEMENT CORNER	1228978.84	1002723.86
N	PAVEMENT CORNER	1229012.97	1002684.63
O	SIDEWALK CORNER	1229019.12	1002696.61
P	SIDEWALK CORNER	1229045.38	1002666.44
Q	PAVEMENT CORNER	1229097.20	1002698.28
R	PAVEMENT CORNER	1229264.10	1002506.51
S	BUILDING CORNER	1229051.45	1002651.84
T	BUILDING CORNER	1229028.82	1002632.14

**WILLARD AIRPORT  
 UNIVERSITY OF ILLINOIS  
 NEW AIRFIELD LIGHTING VAULT  
 PROPOSED IMPROVEMENTS 4**

© Copyright CMT, Inc.  
  
**CMT**  
 CRAWFORD, MURPHY & TILLY, INC.  
 CONSULTING ENGINEERS  
 License No. 184-000613

DESIGN BY:	KLB
DRAWN BY:	CMT
CHECKED BY:	CBG
APPROVED BY:	CET
DATE:	APRIL 20, 2012
JOB No:	11059-03
IL PROJ. NO.	CMI-4100
AIP PROJ. NO.	3-17-0016-XX
SHEET	21 OF 60 SHEETS



**KEY MAP**