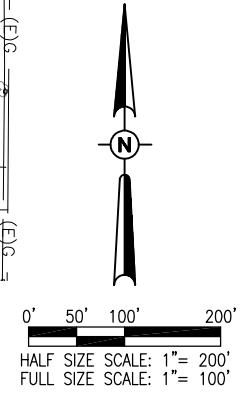
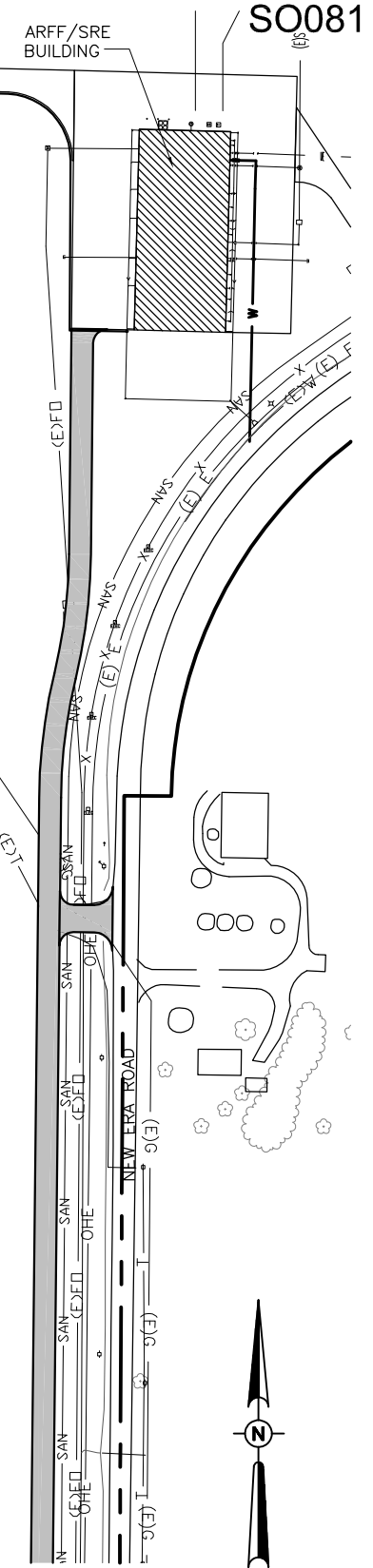


LEGEND

- UD — EXISTING UNDERDRAIN
- (E)FO — EXISTING FIBER OPTIC LINE
- (E)G — EXISTING GAS LINE
- (E)W — EXISTING WATER LINE
- (E)E — EXISTING ELECTRICAL LINE
- (E)T — EXISTING TELEPHONE LINE
- (E)SS — EXISTING SANITARY LINE
- - - EXISTING CONTOURS
- — — PROPOSED CONTOURS
- — — PROPOSED IMPROVEMENTS
- - - PROPOSED DITCH FLOWLINE



SO081



<p>HANSON Hanson Professional Services Inc. 323 New Era Road Murphysboro, IL 62966 Offices Nationwide</p>	Hanson Project No. 11A0037D_0001 Filename: R-004EXST.DWG Scale: NOT TO SCALE Date: 04/20/2012	SOUTHERN ILLINOIS AIRPORT MURPHYSBORO / CARBONDALE, ILLINOIS SIA SOUTHERN ILLINOIS AIRPORT IL PROJ.: MDH-4173	BY: _____ DATE: _____ REVISION: _____
	LAYOUT: JSL 03/06/2012 DRAWN: CWS 03/06/2012 REVIEWED: JSL 04/16/2012	<p>CONSTRUCT PERIMETER ROAD TO SUPPORT ARFF/SRE BUILDING</p> <p>EXISTING CONDITIONS/ UTILITIES PLAN</p>	