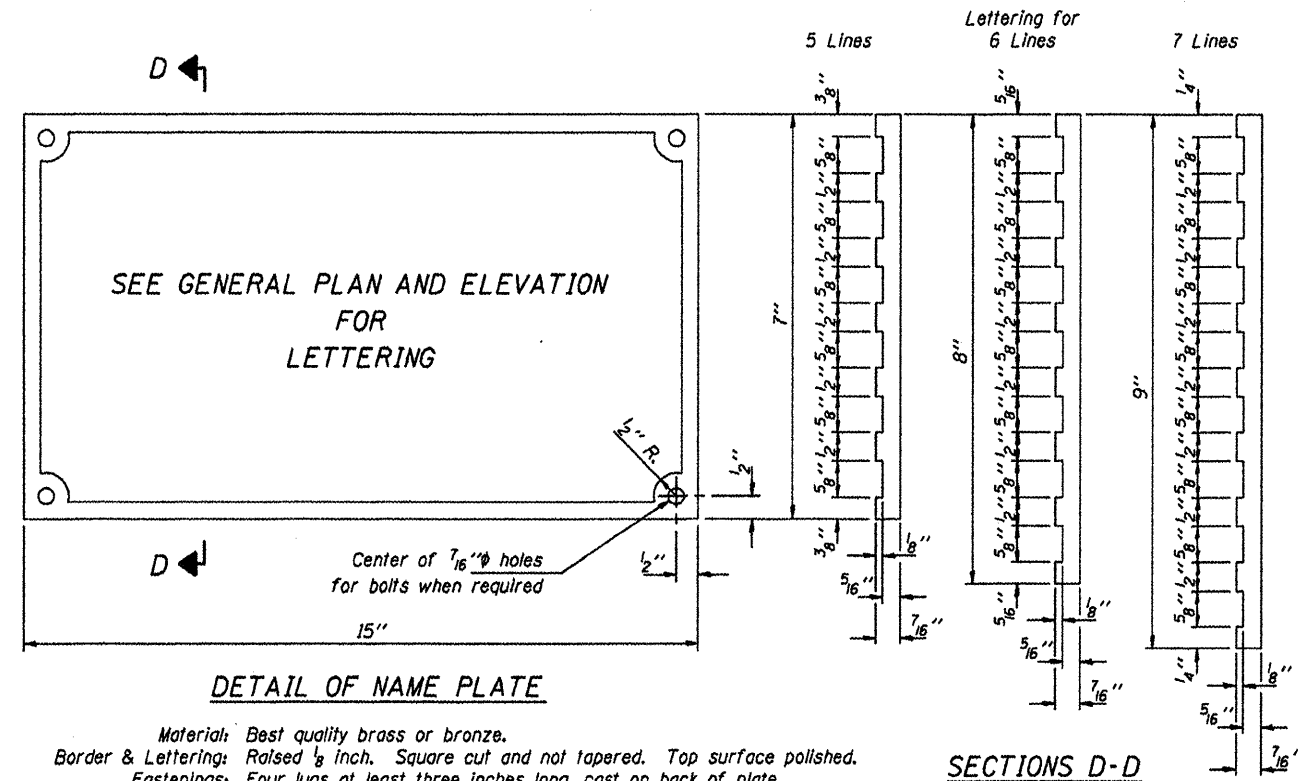


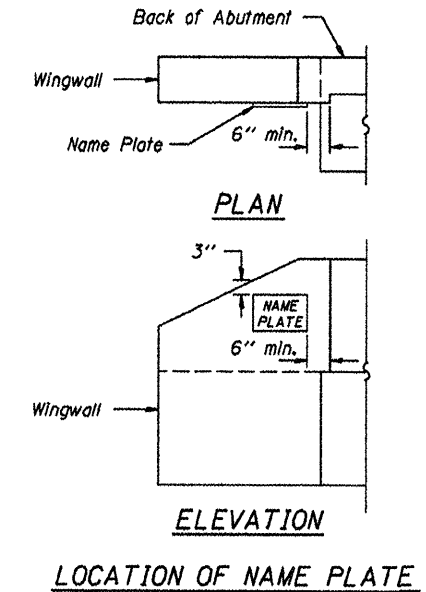
ROUTE	SECTION	COUNTY	TOTAL SHEETS	SHEET NO.
TR 209	09-01194-00-BR	UNION	12	8
PROJECT NO. BROS-181(50)			CONTRACT NO. 99466	



DETAIL OF NAME PLATE

Material: Best quality brass or bronze.
 Border & Lettering: Raised 1/8 inch. Square cut and not tapered. Top surface polished.
 Fastenings: Four lugs at least three inches long, cast on back of plate.

SECTIONS D-D



LOCATION OF NAME PLATE

NAME PLATES
 TOWNSHIP ROUTE 209 (AIRPORT ROAD)
 DUTCH CREEK
 SECTION 09-01194-00-BR
 UNION COUNTY
 STRUCTURE NO. 091-3235