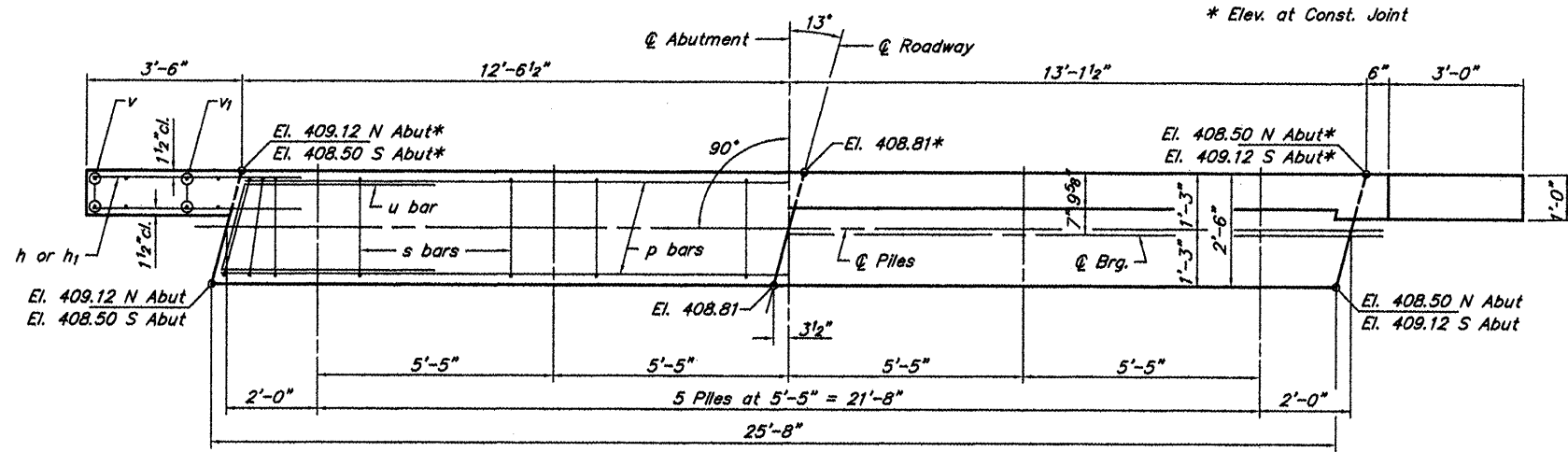
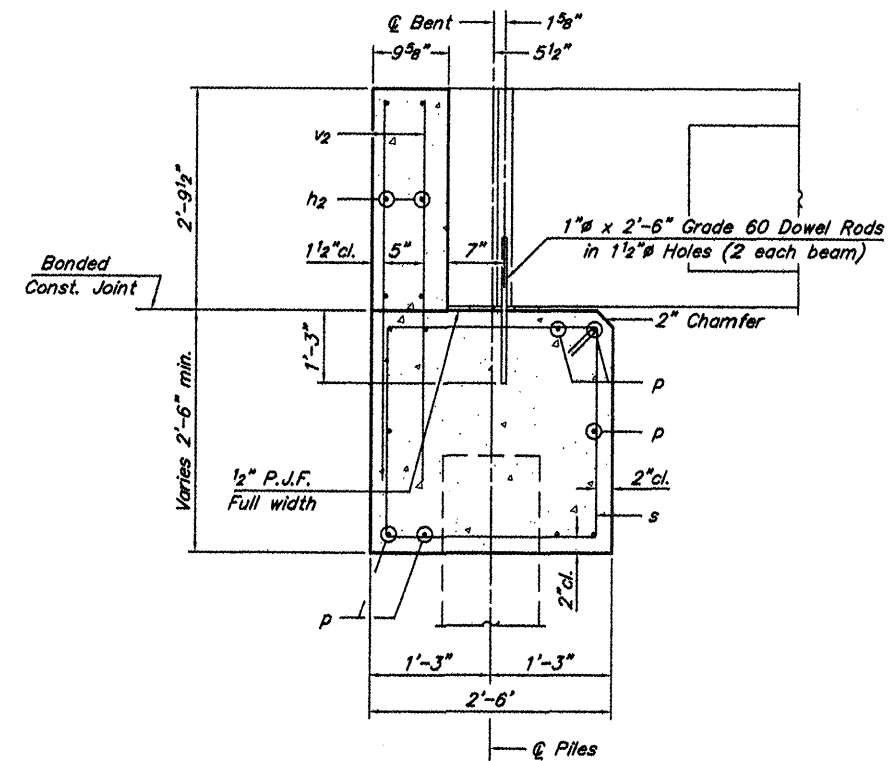


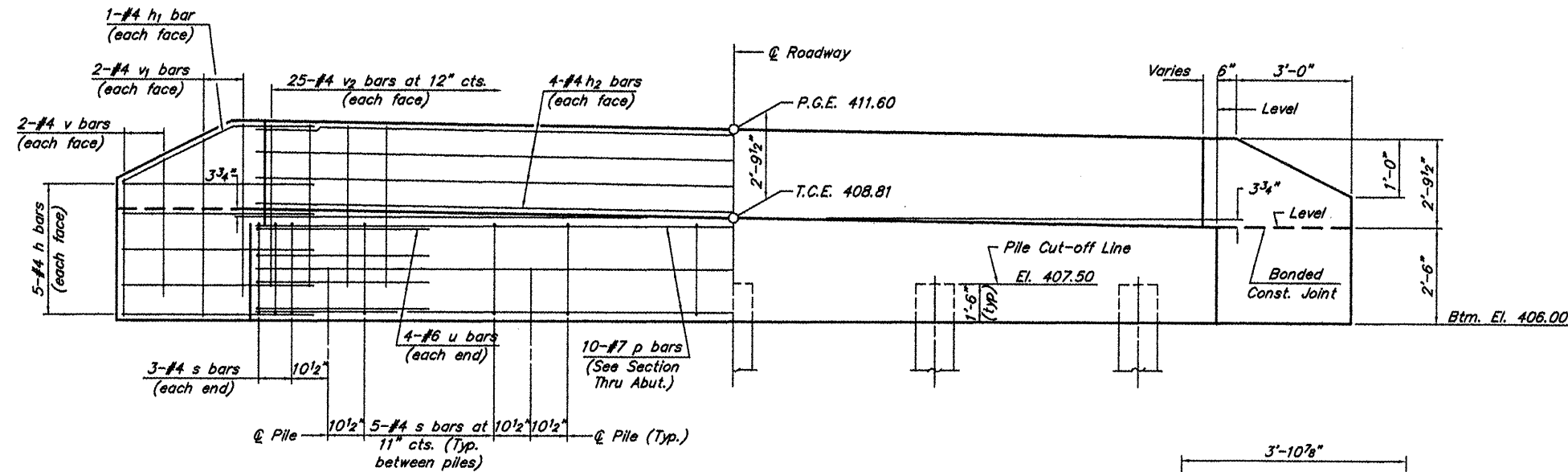
ROUTE	SECTION	COUNTY	TOTAL SHEETS	SHEET NO
TR 209	09-01194-00-BR	UNION	12	6
PROJECT NO. BROS-181(50)			CONTRACT NO. 99466	



PLAN



SECTION THRU ABUT.
(At Right Angles)



ELEVATION

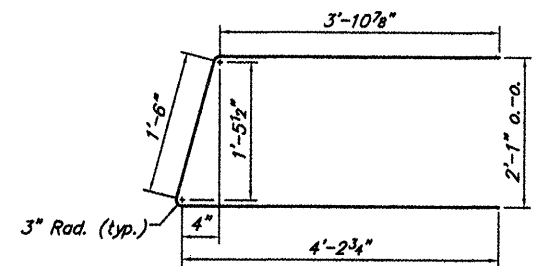
(N. Abut. shown, reverse SE for S. Abut.)

NOTES

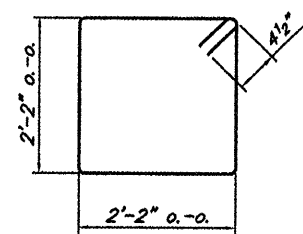
- The Backwall and the portion of the Wingwalls above the bonded construction joint shall be cast against the in-place beam.
- Reinforcement bars shall conform to A.A.S.H.T.O. M-31, M-42 or M-53, Grade 60.

DESIGN STRESSES

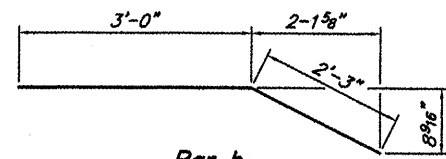
$f_c = 3,500 \text{ psi}$
 $f_y = 60,000 \text{ psi}$



Bar u



Bar s



Bar h1

BILL OF MATERIAL FOR ONE ABUTMENT

Bar	No.	Size	Length	Shape
h	20	#4	5'-3"	—
h1	4	#4	5'-3"	—
h2	8	#4	25'-4"	—
P	10	#7	25'-4"	—
s	26	#4	9'-5"	□
u	8	#6	10'-5"	—
v	8	#4	4'-2"	—
v1	8	#4	4'-11"	—
v2	50	#4	4'-5"	—
Concrete Structures			10.2	Cu. Yds.
Reinforcement Bars			1222	Lbs.

ABUTMENT
TOWNSHIP ROUTE 209 (AIRPORT ROAD)
DUTCH CREEK
SECTION 09-01194-00-BR
UNION COUNTY
STRUCTURE NO. 091-3235