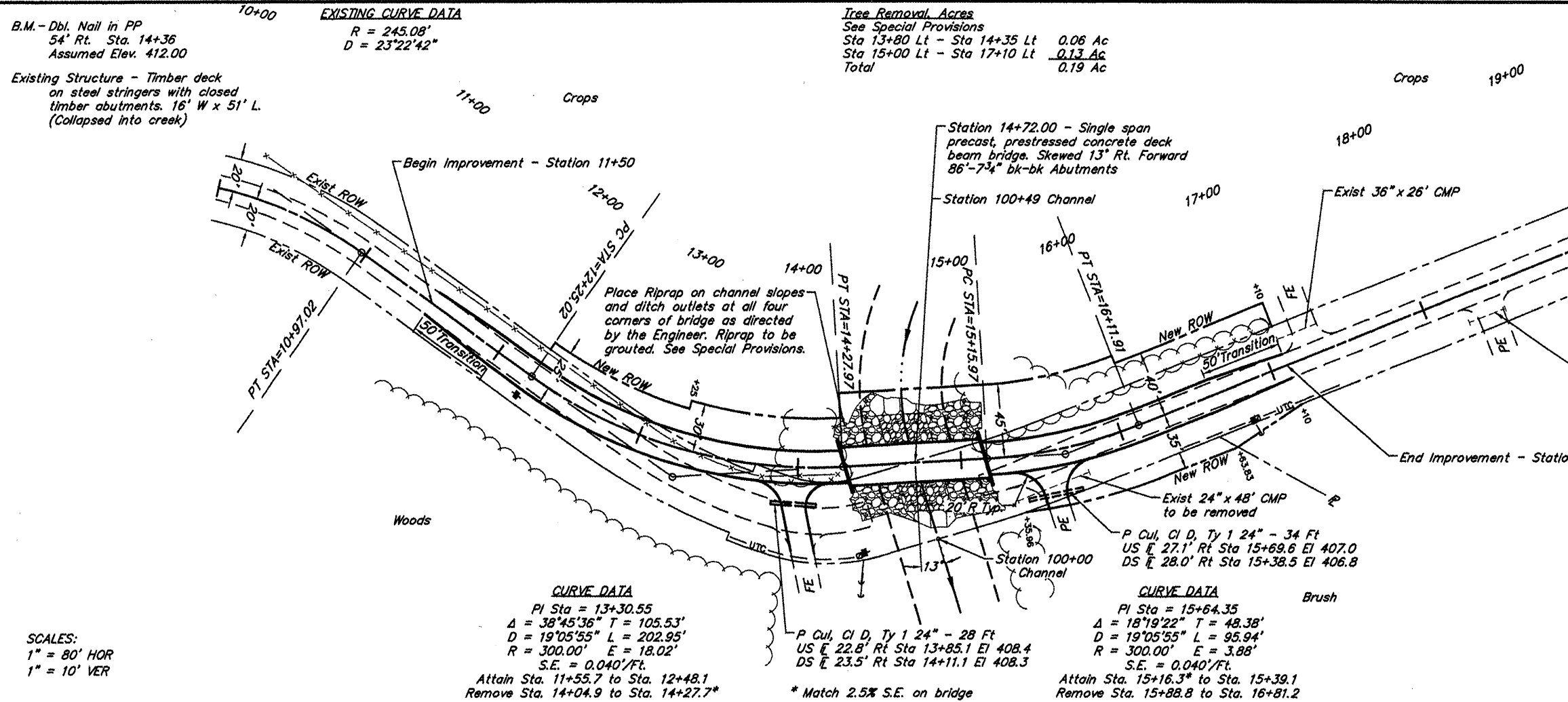


ROUTE	SECTION	COUNTY	TOTAL SHEETS	SHEET NO.
TR 209	09-01194-00-BR	UNION	12	2
PROJECT NO. BROS-181(50)			CONTRACT NO. 99466	



B.M. - Dbl. Nail in PP
54' Rt. Sta. 14+36
Assumed Elev. 412.00

Existing Structure - Timber deck on steel stringers with closed timber abutments. 16' W x 51' L. (Collapsed into creek)

Tree Removal Acres
See Special Provisions
Sta 13+80 Lt - Sta 14+35 Lt 0.06 Ac
Sta 15+00 Lt - Sta 17+10 Lt 0.13 Ac
Total 0.19 Ac

EXISTING CURVE DATA
R = 245.08'
D = 23°22'42"

CURVE DATA
PI Sta = 13+30.55
Δ = 38°45'36" T = 105.53'
D = 19°05'55" L = 202.95'
R = 300.00' E = 18.02'
S.E. = 0.040'/Ft.
Attain Sta. 11+55.7 to Sta. 12+48.1
Remove Sta. 14+04.9 to Sta. 14+27.7*

CURVE DATA
PI Sta = 15+64.35
Δ = 18°19'22" T = 48.38'
D = 19°05'55" L = 95.94'
R = 300.00' E = 3.88'
S.E. = 0.040'/Ft.
Attain Sta. 15+16.3* to Sta. 15+39.1
Remove Sta. 15+88.8 to Sta. 16+81.2

SCALES:
1" = 80' HOR
1" = 10' VER

