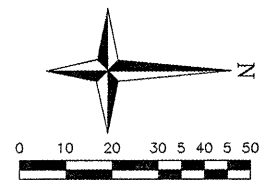
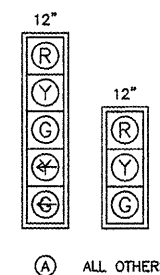


**CONTROLLER PHASING**

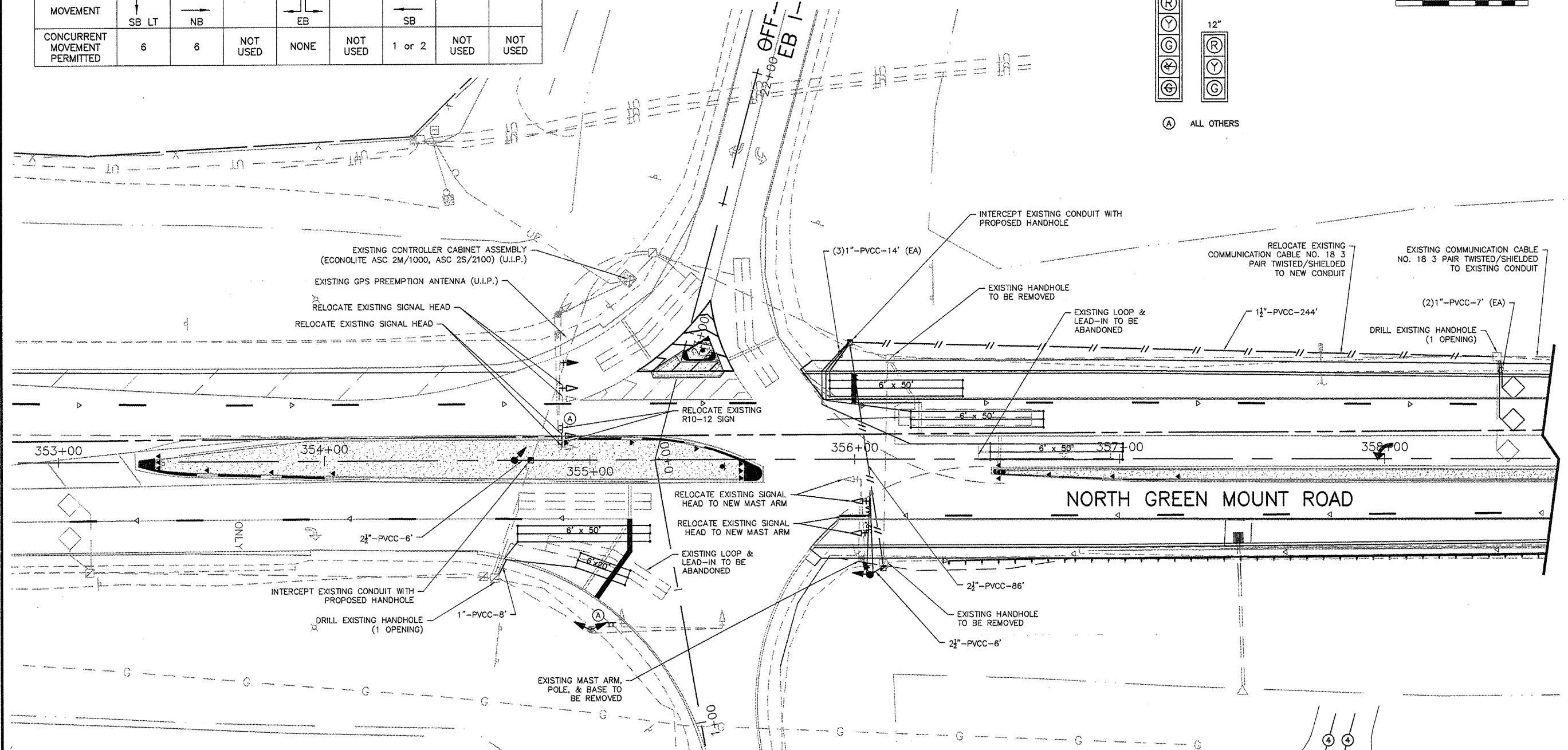
PROPOSED								
PHASE Ø	1	2	3	4	5	6	7	8
MOVEMENT	SB LT	NB		EB		SB		
CONCURRENT MOVEMENT PERMITTED	6	6	NOT USED	NONE	NOT USED	1 or 2	NOT USED	NOT USED

**TRAFFIC SIGNAL FACES**



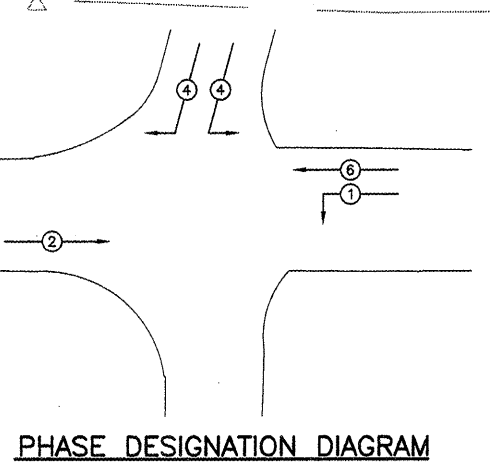
SHEET NO.  
**43 OF 55**

Job No. 066-09  
Scale:  
Drawn by: AJT  
Design by: EF  
Approved by: RAS  
File Name: Shiloh Plans



**TRAFFIC SIGNAL LEGEND**

- |  |   |  |                                     |
|--|---|--|-------------------------------------|
|  | PROPOSED TRAFFIC SIGNAL MAST ARM WITH STREET NAME SIGN AND TRAFFIC SIGN |  | PROPOSED DETECTOR LOOP              |
|  | EXISTING HANDHOLE   |  | P.V.C.C. POLYVINYL CHLORIDE CONDUIT |
|  | PROPOSED HANDHOLE   |  | G.S.C. GALVANIZED STEEL CONDUIT     |
|  | PROPOSED DOUBLE HANDHOLE  |  | PROPOSED CONTROLLER                 |
|  | PROPOSED CONDUIT: "T" TRENCH, "P" PUSHED, SIZE SPECIFIED                |  | EXISTING CONTROLLER                 |
|  | EXISTING SERVICE INSTALLATION   |  | TRAFFIC SIGN                        |
|  | EXISTING GPS PREEMPTION ANTENNA   |  | STREET NAME SIGN                    |



**PHASE DESIGNATION DIAGRAM**

F.A.U. RTE.	SECTION	COUNTY
9170	08-00333-12-PW	ST. CLAIR
ILLINOIS	CONTRACT NO. 97492	

**ISSUE RECORD**

4/20/12	PS&E SUBMITTAL
---------	----------------

Corporate Engineering Certificate # 000381

*Richard Schmitt*  
CIVIL ENGINEER  
4/20/12

**CBB** Crawford, Bunte, Brammeier  
Traffic and Transportation Engineers

St. Louis, Missouri/Glen Carbon, Illinois  
314-878-6644 618-656-2612  
Fax: 314-878-5876 E-Mail: cbb@cbbtraffic.com

**TRAFFIC SIGNAL PLAN**

N. GREEN MOUNT ROAD & I-64  
E.B. RAMP, W.B. RAMP &  
REGENCY PARK/PIERCE BLVD  
SHILOH, ILLINOIS