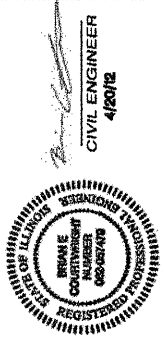


Job No. 088-09  
Scale: 1"=20'  
Drawn by: BEC  
Design by: BEC  
Approved by: CMB  
File Name: Shiloh Plans

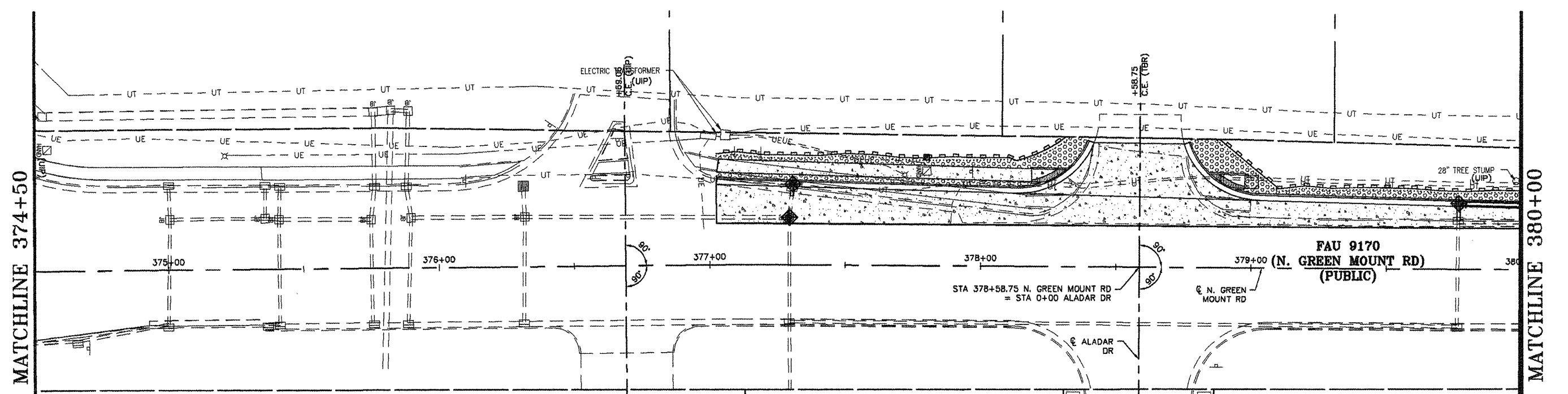
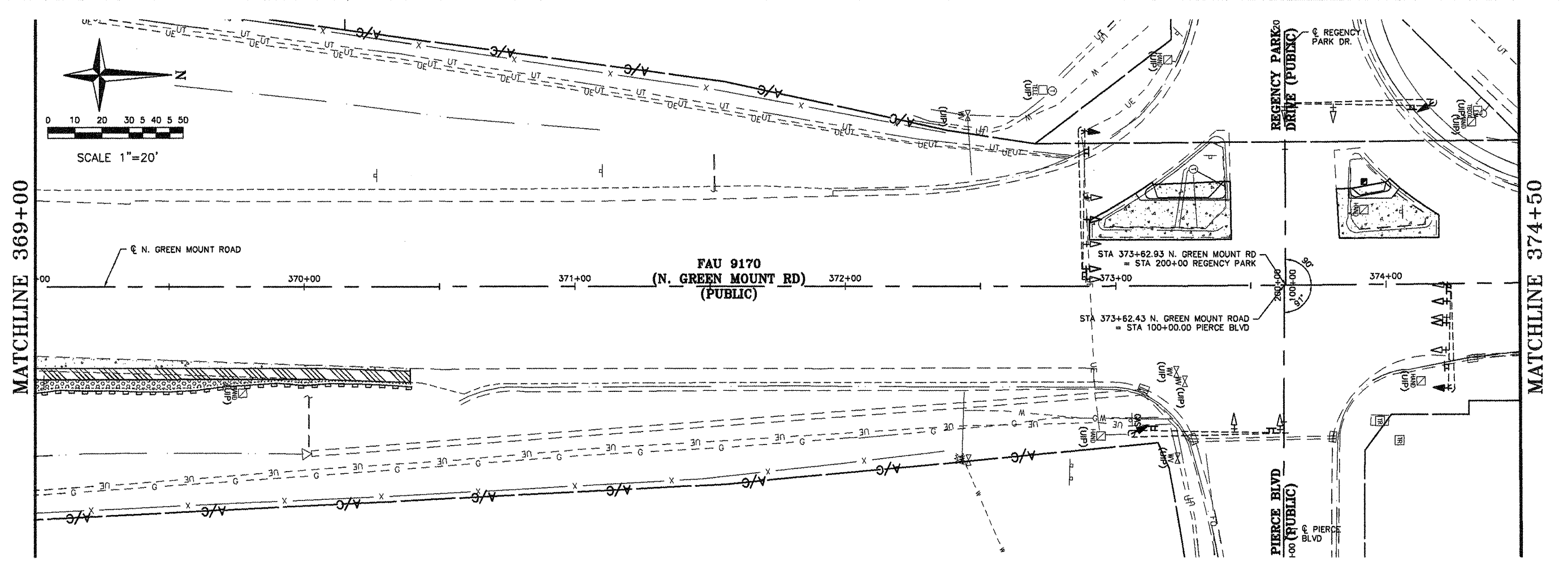
ISSUE RECORD	
DATE	DESCRIPTION
FR&E 4/20/12	

Corporate Engineering Certificate # 000361

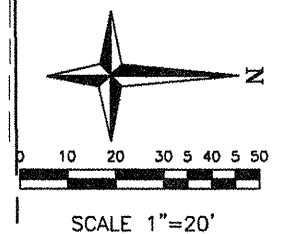


**CBB** Crawford, Bunte, Brammiller  
Traffic and Transportation Engineers  
St. Louis, Missouri/Clen Carbon, Illinois  
314-878-6644 618-656-2612  
Fax: 314-878-5876 E-Mail: cbb@cbbtraffic.com

**EROSION CONTROL PLAN**  
N. GREEN MOUNT ROAD & I-64  
E.B. RAMP, W.B. RAMP &  
REGENCY PARK/PIERCE BLVD  
SHILOH, ILLINOIS



- |       |                 |                         |
|-------|-----------------|-------------------------|
| (TBR) | - TO BE REMOVED | (PR) PCC                |
| (UIP) | - USE IN PLACE  | - PR HMA SHOULDERS      |
| CONC  | - CONCRETE      | - PR CONSTRUCTION LIMIT |
| TEMP  | - TEMPORARY     | - PR GUARDRAIL          |
| PAVT  | - PAVEMENT      |                         |
| PR    | - PROPOSED      |                         |
| EX    | - EXISTING      |                         |
- 
- |                             |  |
|-----------------------------|--|
| EROSION CONTROL PLAN LEGEND |  |
|                             | PERIMETER EROSION CONTROL BARRIER            |
|                             | INLET & PIPE PROTECTION                      |
|                             | TEMPORARY DITCH CHECK                        |
|                             | AREA TO BE TEMP. SEEDED AND SEEDING CLASS 2A |



F.A.U. RTE.	SECTION	COUNTY
9170	08-00333-12-PW	ST. CLAIR
ILLINOIS	CONTRACT NO. 97492	