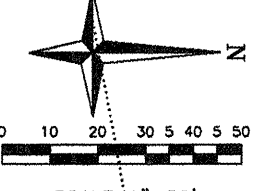
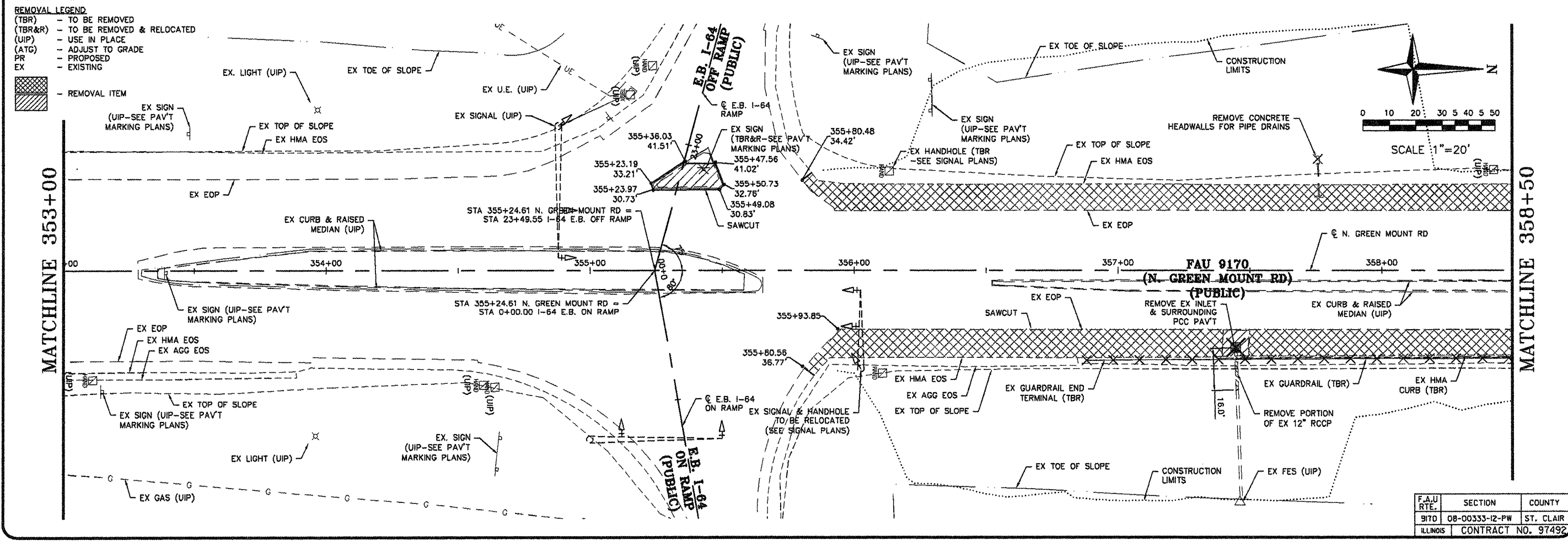


MATCHLINE 353+00



MATCHLINE 358+50

- REMOVAL LEGEND**
- (TBR) - TO BE REMOVED
  - (TBR&R) - TO BE REMOVED & RELOCATED
  - (UIP) - USE IN PLACE
  - (ATG) - ADJUST TO GRADE
  - PR - PROPOSED
  - EX - EXISTING
- REMOVAL ITEM

MATCHLINE 353+00

F.A.U. RTE.	SECTION	COUNTY
9170	08-00333-12-PW	ST. CLAIR
ILLINOIS	CONTRACT NO. 97492	

**SHEET NO.**  
**19 of 55**

Job No. 088-09  
Scale: 1"=20'  
Drawn by: BEC  
Design by: BEC  
Approved by: CMB  
File Name: 8thb Plans

ISSUE RECORD	
DATE	DESCRIPTION

Corporate Engineering Certificate # 000887

CIVIL ENGINEER  
4/20/12

**CBB** Crawford, Bunte, Brammeier  
Traffic and Transportation Engineers

St. Louis, Missouri/Glen Carbon, Illinois  
314-878-6644 618-656-2612  
Fax: 314-878-5876 E-Mail: cbb@cbbtraffic.com

**REMOVAL SHEETS**

N. GREEN MOUNT ROAD & I-64  
E.B. RAMP, W.B. RAMP &  
REGENCY PARK/PIERCE BLVD  
SHILOH, ILLINOIS