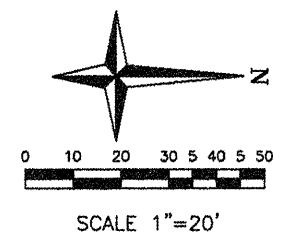


ISBI/BBA N. GREEN MOUNT  
ONE LLC  
03-36.0-203-013  
475 REGENCY PARK  
LOT 5A - SHOPPES AT N. GREEN MOUNT

NATIONAL CITY BANK  
OF THE MIDWEST  
03-36.0-203-011  
1385 N. GREEN MOUNT RD  
LOT 4  
SHOPPES AT N. GREEN MOUNT

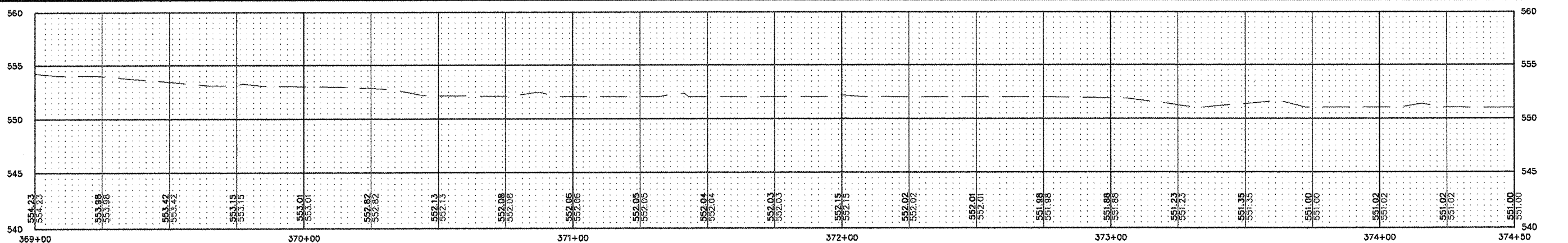
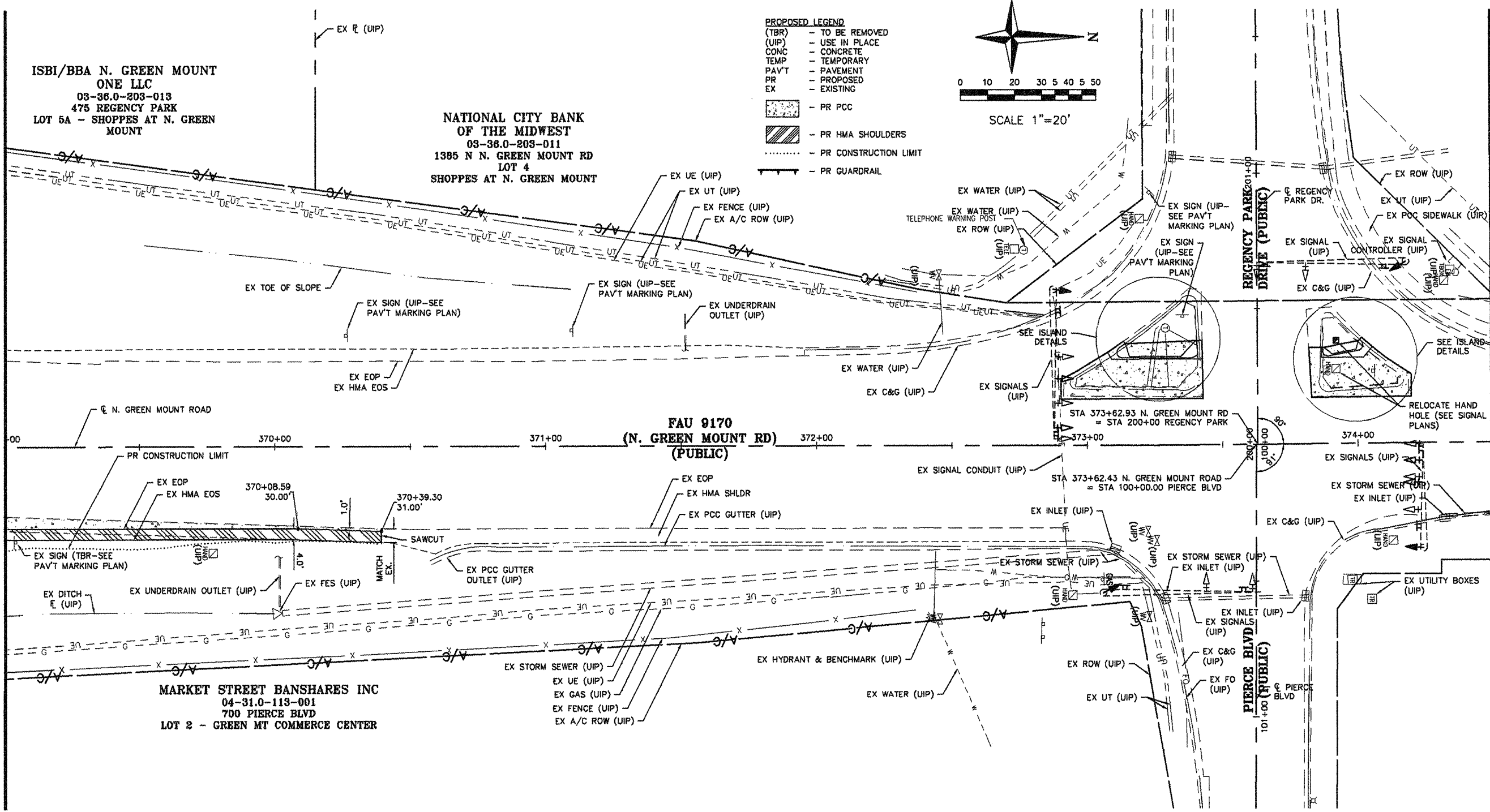
MARKET STREET BANSHARES INC  
04-31.0-113-001  
700 PIERCE BLVD  
LOT 2 - GREEN MT COMMERCE CENTER

- PROPOSED LEGEND**
- (TBR) - TO BE REMOVED
  - (UIP) - USE IN PLACE
  - CONC - CONCRETE
  - TEMP - TEMPORARY
  - PAVT - PAVEMENT
  - PR - PROPOSED
  - EX - EXISTING
  - PR PCC
  - PR HMA SHOULDERS
  - PR CONSTRUCTION LIMIT
  - PR GUARDRAIL



MATCHLINE 369+00

MATCHLINE 374+50



F.A.U. RTE.	SECTION	COUNTY
917D	08-00333-12-PW	ST. CLAIR
ILLINOIS	CONTRACT NO. 97492	

SHEET NO.  
**15 OF 55**

Job No. 088-09  
Scale: 1"=20'  
Drawn by: BEC  
Design by: BEC  
Approved by: CMB  
File Name: Shiloh Plans

**ISSUE RECORD**

DATE	DESCRIPTION
PS&E 4/20/12	

Corporate Engineering Certificate # 000361

Brian E. Carbon  
CIVIL ENGINEER  
4/20/12

**CBB** Crawford, Bunte, Brammeier  
Traffic and Transportation Engineers

St. Louis, Missouri/Glen Carbon, Illinois  
314-878-6644 618-656-2612  
Fax: 314-878-5876 E-Mail: cbb@cbbrtraffic.com

**PLAN/PROFILE SHEETS**

N. GREEN MOUNT ROAD & I-64  
E.B. RAMP, W.B. RAMP &  
REGENCY PARK/PIERCE BLVD  
SHILOH, ILLINOIS