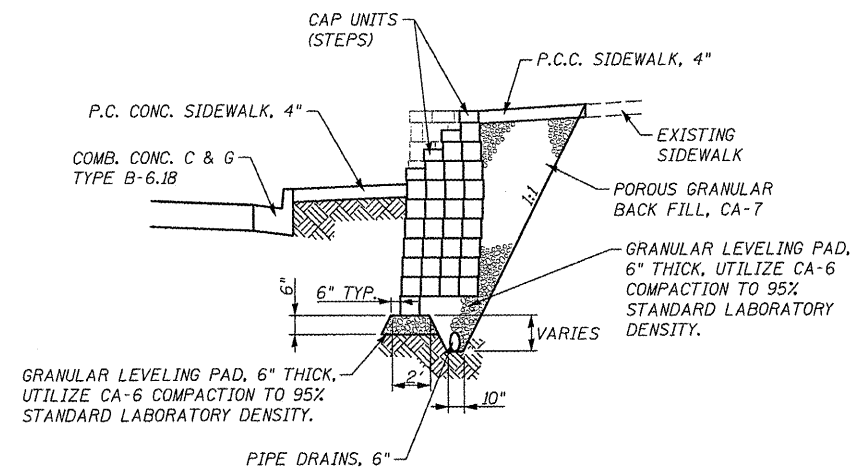
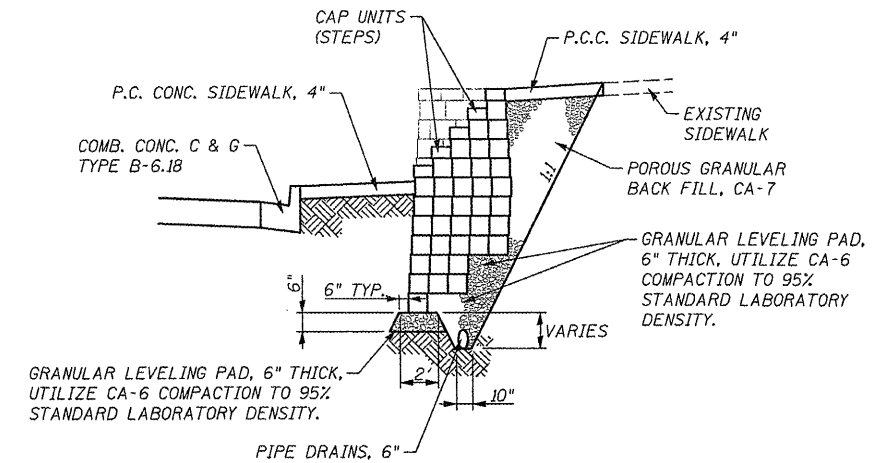


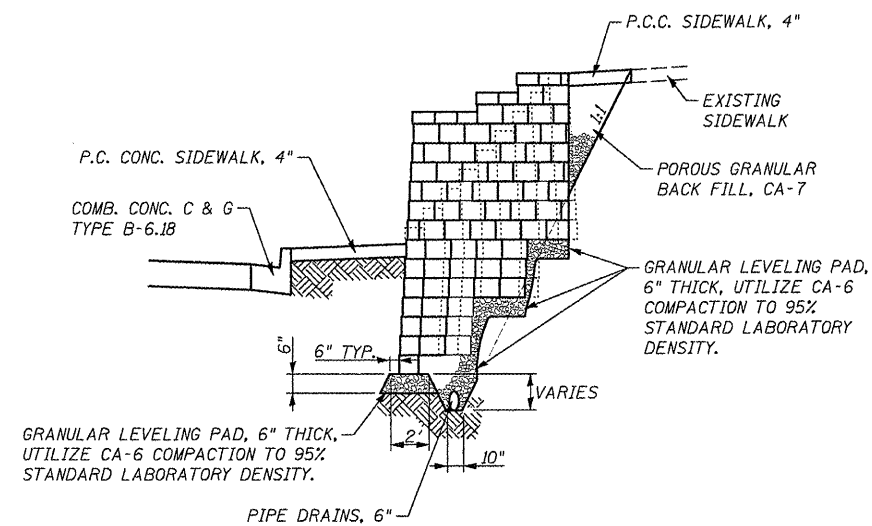
SECTION (W-1) - (W-1)



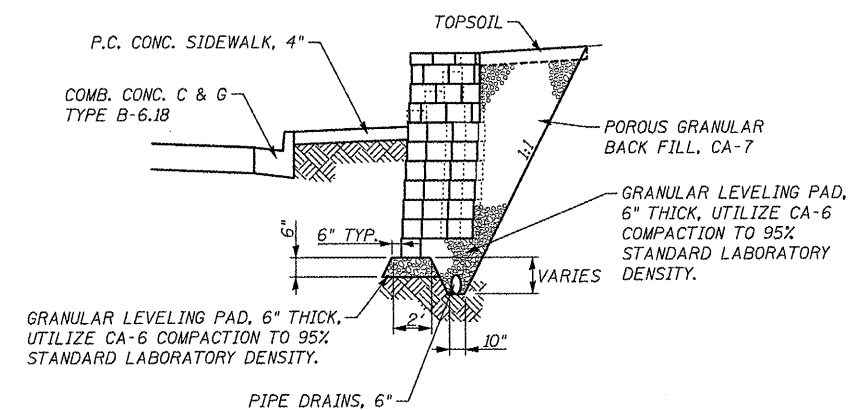
SECTION (W-3) - (W-3)



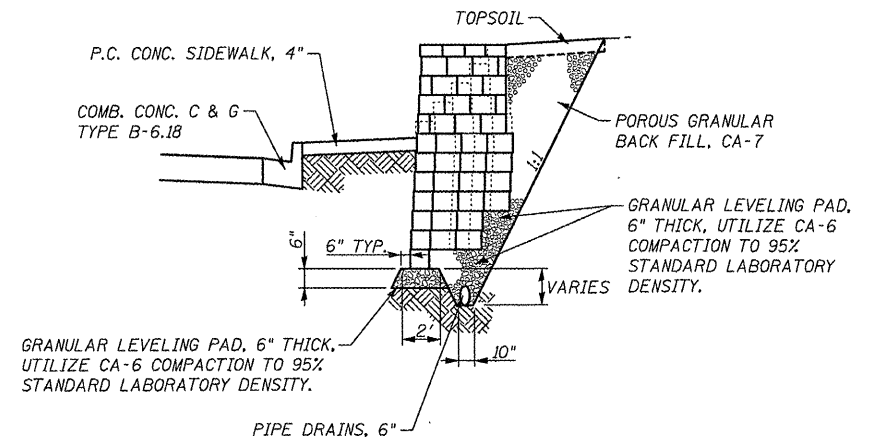
SECTION (W-5) - (W-5)



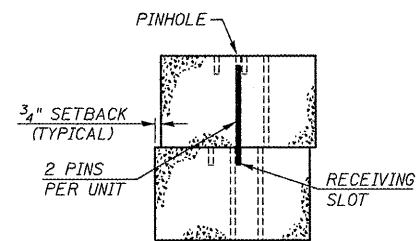
SECTION (W-2) - (W-2)



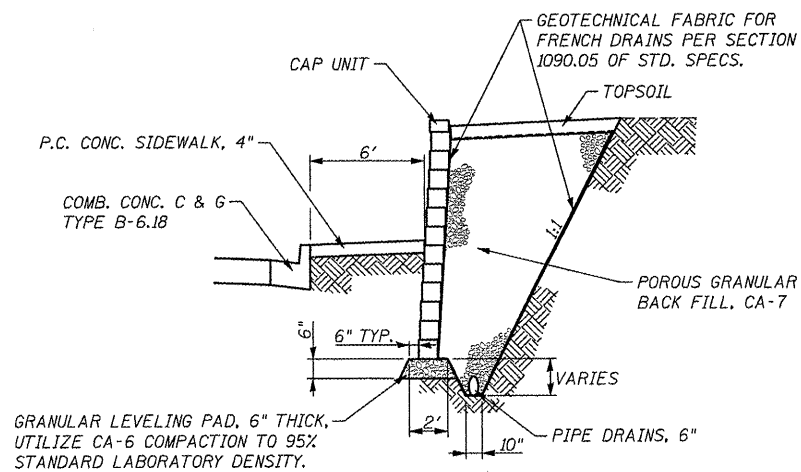
SECTION (W-4) - (W-4)



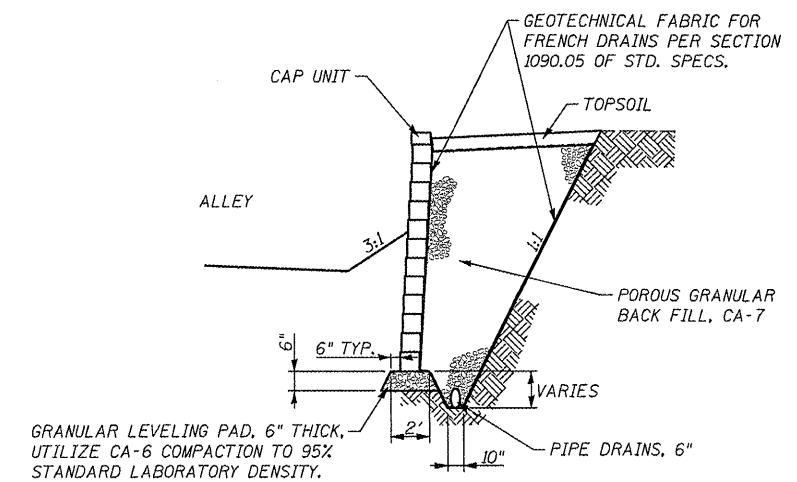
SECTION (W-6) - (W-6)



PINNING DETAIL (NOT TO SCALE)



SECTION (W-7) - (W-7)



SECTION (W-8) - (W-8)

FILE NAME = 6185-wgll-rt-southof4th-details.dgn	USER NAME = JUSERDESCR	DESIGNED - HMG: CRW & EDW	REVISED -	STATE OF ILLINOIS DEPARTMENT OF TRANSPORTATION	SEGMENTAL CONCRETE BLOCK DETAILS	F.A. RTE.	SECTION	COUNTY	TOTAL SHEETS	SHEET NO.	
\\B:\BWater\loc\proj\PhaseIV\CAD\RDAD	\\B:\BWater\loc\proj\PhaseIV\CAD\RDAD	DRAWN - HMG: CRW, EDW, & KOJ	REVISED -			9315	06-00032-03-PV	MONROE	93	54	
		CHECKED - HMG: CRW	REVISED -			CONTRACT NO. 97488					
		DATE -	REVISED -			ILLINOIS FED. AID PROJECT					
				SCALE:	SHEET NO. OF SHEETS	STA. TO STA.					

HMG ENGINEERS, INC., 1075 LAKE ROAD, PO BOX 70, CARLYLE, IL 62231 PHONE (618) 594-3711 WWW.HMGENGINEERS.COM