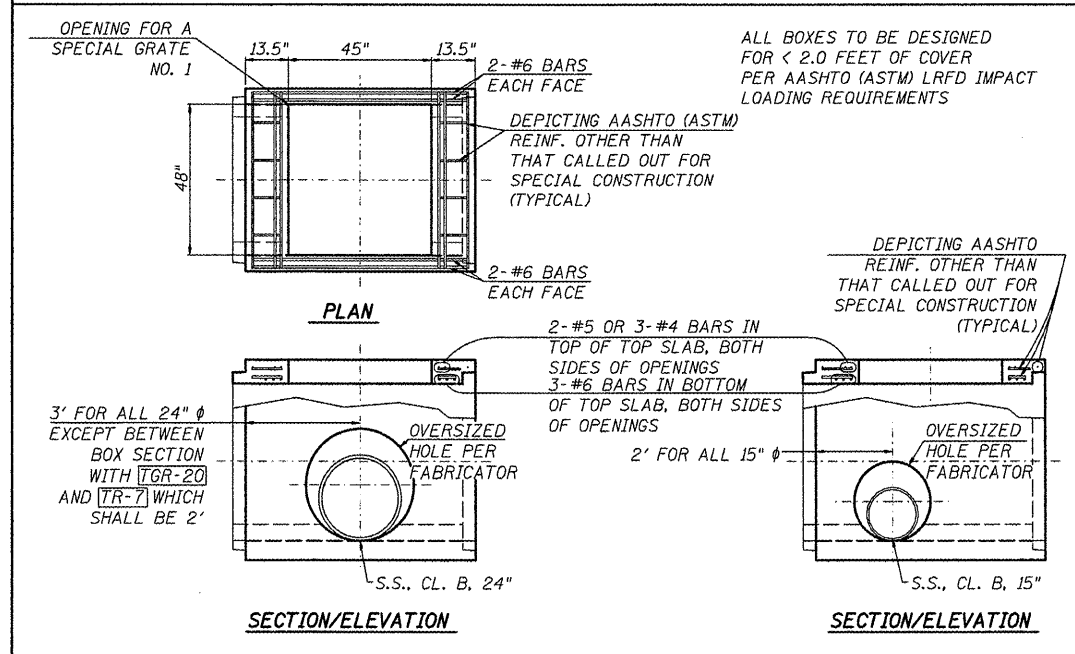
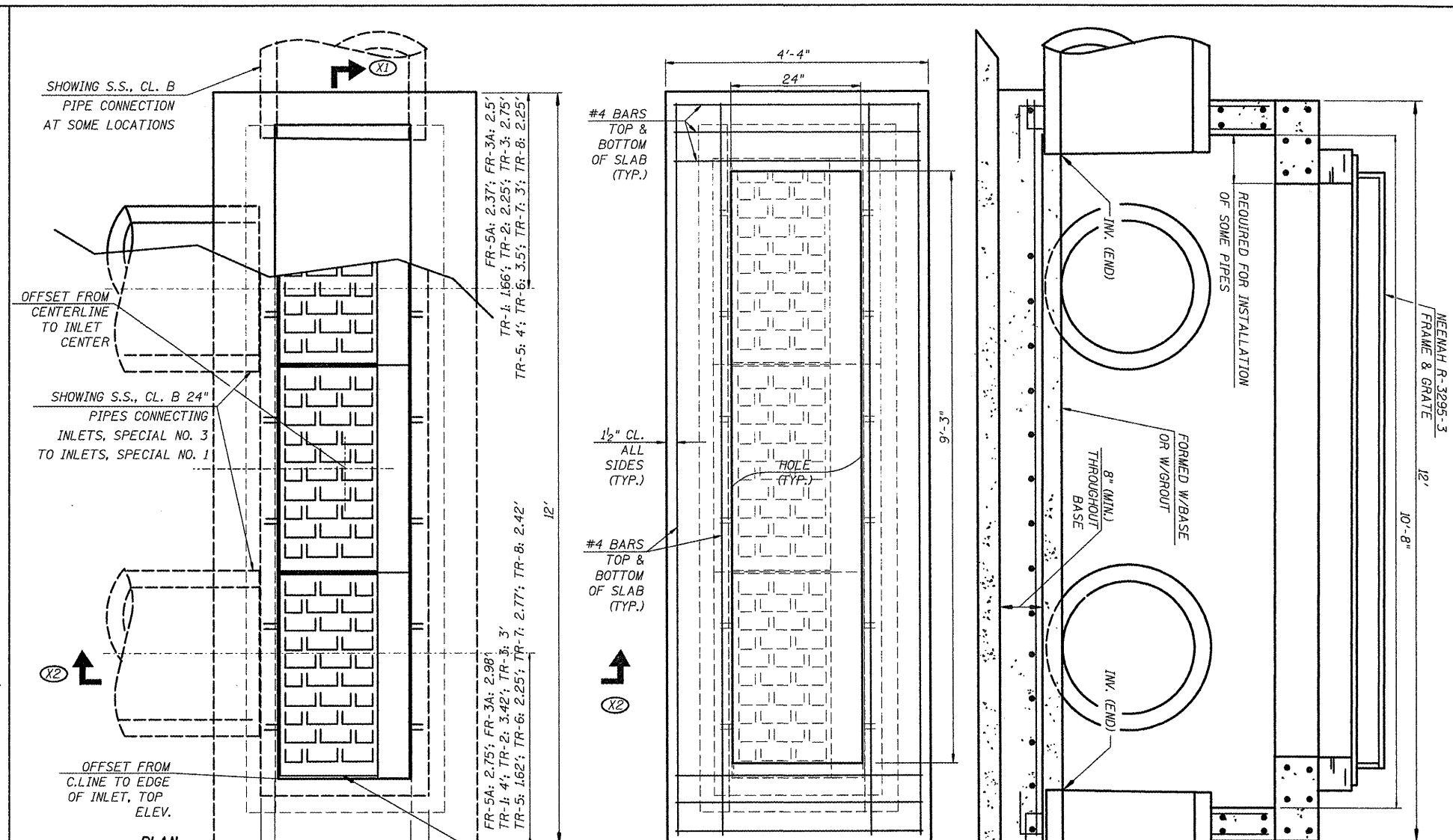


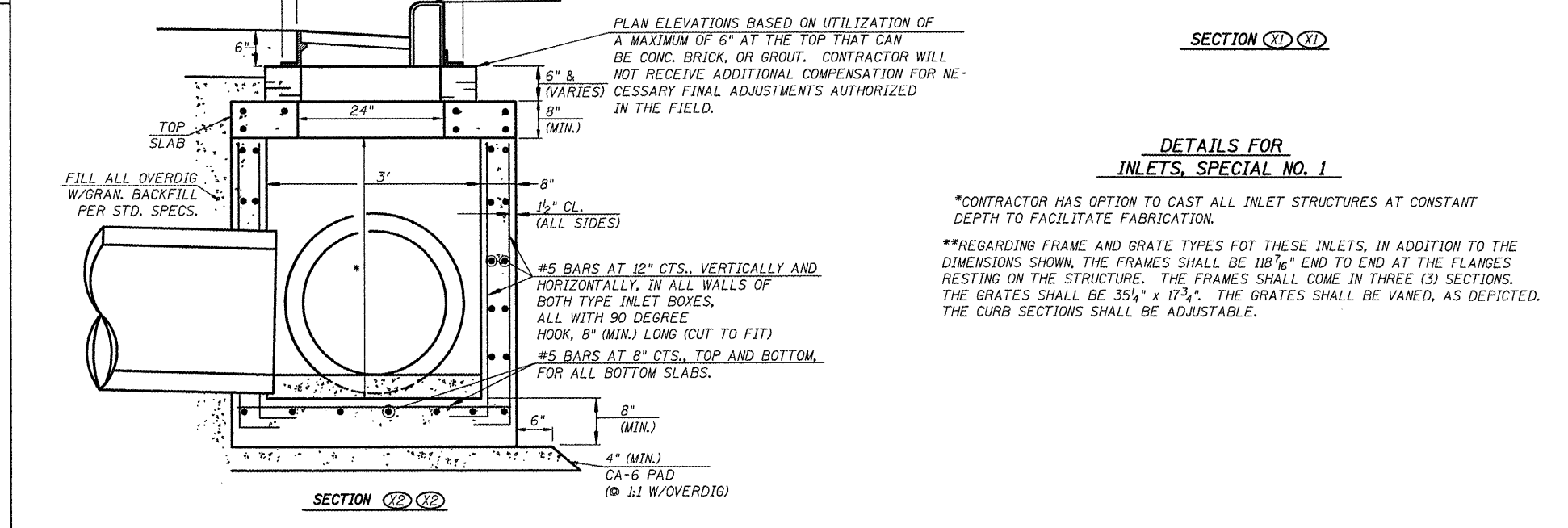
SPECIAL GRATE NO. 1 DETAILS



P.C.B.C. 4' x 4' SPECIAL DETAILS



PLAN (SHOWING REINFORCEMENT IN TOP SLAB)



SECTION (X2 X2)

DETAILS FOR INLETS, SPECIAL NO. 1

*CONTRACTOR HAS OPTION TO CAST ALL INLET STRUCTURES AT CONSTANT DEPTH TO FACILITATE FABRICATION.

**REGARDING FRAME AND GRATE TYPES FOR THESE INLETS, IN ADDITION TO THE DIMENSIONS SHOWN, THE FRAMES SHALL BE 118 1/16" END TO END AT THE FLANGES RESTING ON THE STRUCTURE. THE FRAMES SHALL COME IN THREE (3) SECTIONS. THE GRATES SHALL BE 35 1/4" x 17 3/4". THE GRATES SHALL BE VANED, AS DEPICTED. THE CURB SECTIONS SHALL BE ADJUSTABLE.

| | | | | | | | | | | | |
|--|--|-----------------------------|----------|---|----------------------------------|---------------------|---------------------------|--------|--------------|-----------|--|
| FILE NAME: 6185-ssdetails4.dgn | USER NAME: USERDESCR. | DESIGNED: HMG: CRW & EDW | REVISED: | STATE OF ILLINOIS DEPARTMENT OF TRANSPORTATION | STORM SEWER DETAILS | F.A. RTE: | SECTION | COUNTY | TOTAL SHEETS | SHEET NO. | |
| H:\SIBBWater\loc\pore\p\phase\IV\CAD\DD-R04C | H:\SIBBWater\loc\pore\p\phase\IV\CAD\DD-R04C | DRAWN: HMG: CRW, EDW, & KOJ | REVISED: | | | 9315 | 06-00032-03-PV | MONROE | 93 | 42 | |
| PLOT SCALE: 1/8" = 1'-0" | PLOT SCALE: 1/8" = 1'-0" | CHECKED: HMG: CRW | REVISED: | | | CONTRACT NO. 97488 | | | | | |
| PLOT DATE: 3/22/2012 | PLOT DATE: 3/22/2012 | DATE: | REVISED: | | | FED. ROAD DIST. NO. | ILLINOIS FED. AID PROJECT | | | | |
| SCALE: | | | | | SHEET NO. OF SHEETS STA. TO STA. | | | | | | |

HMG ENGINEERS, INC.: 1075 LAKE ROAD, PO BOX 70, CARLYLE, IL 62231 PHONE (618) 594-3711 WWW.HMGENGINEERS.COM