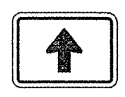
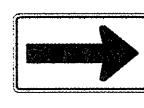
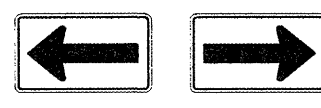


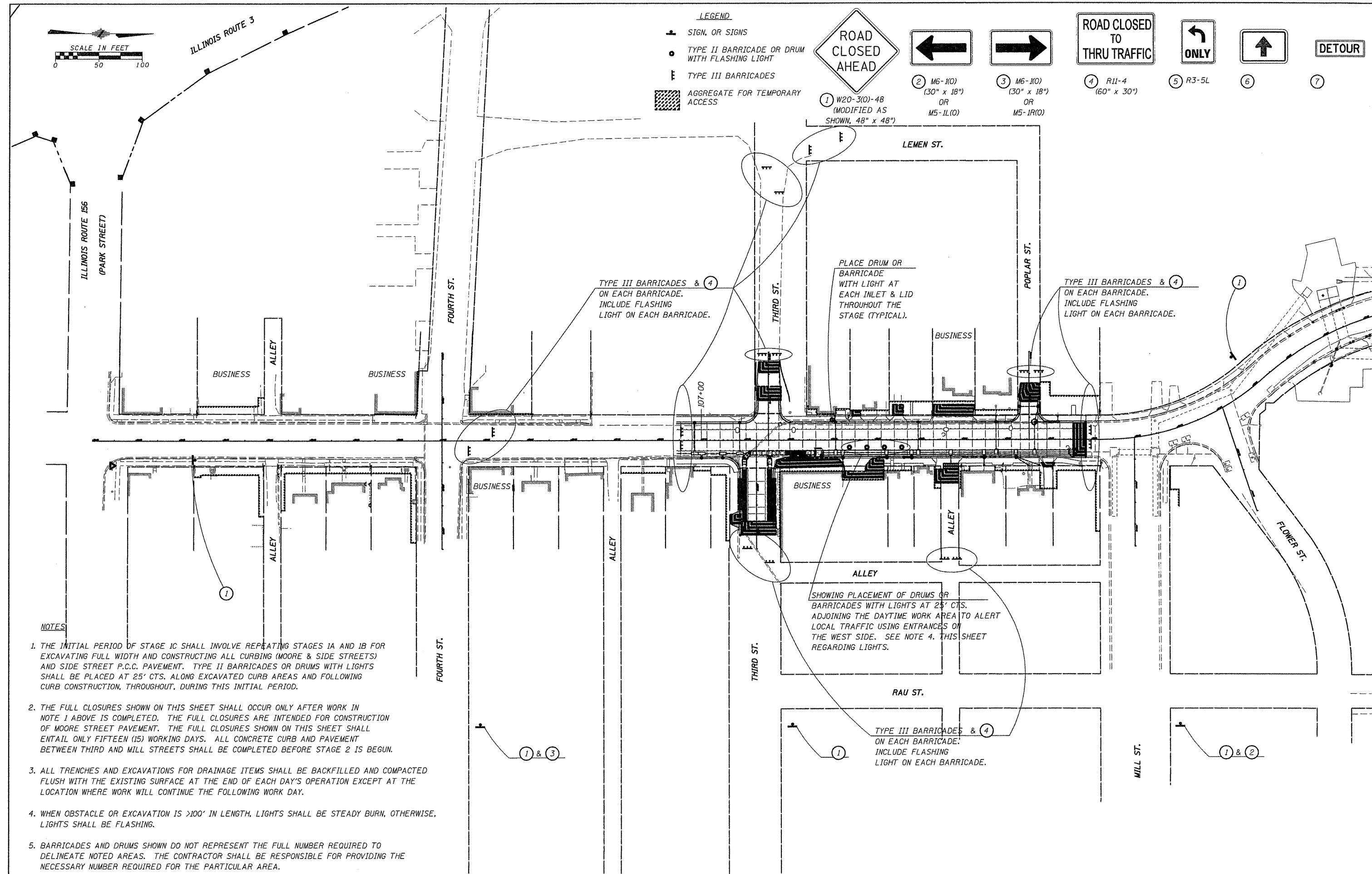
ILLINOIS ROUTE 3

ILLINOIS ROUTE 156  
(PARK STREET)

- LEGEND**
- ▲ SIGN, OR SIGNS
  - TYPE II BARRICADE OR DRUM WITH FLASHING LIGHT
  - ⊞ TYPE III BARRICADES
  - ▨ AGGREGATE FOR TEMPORARY ACCESS



- ① W20-3(0)-48 (MODIFIED AS SHOWN, 48" x 48")
- ② M6-1(0) (30" x 18") OR M5-1L(0)
- ③ M6-1(0) (30" x 18") OR M5-1R(0)
- ④ R11-4 (60" x 30")
- ⑤ R3-5L
- ⑥
- ⑦



**NOTES**

1. THE INITIAL PERIOD OF STAGE 1C SHALL INVOLVE REPEATING STAGES 1A AND 1B FOR EXCAVATING FULL WIDTH AND CONSTRUCTING ALL CURBING (MOORE & SIDE STREETS) AND SIDE STREET P.C.C. PAVEMENT. TYPE II BARRICADES OR DRUMS WITH LIGHTS SHALL BE PLACED AT 25' CTS. ALONG EXCAVATED CURB AREAS AND FOLLOWING CURB CONSTRUCTION, THROUGHOUT, DURING THIS INITIAL PERIOD.
2. THE FULL CLOSURES SHOWN ON THIS SHEET SHALL OCCUR ONLY AFTER WORK IN NOTE 1 ABOVE IS COMPLETED. THE FULL CLOSURES ARE INTENDED FOR CONSTRUCTION OF MOORE STREET PAVEMENT. THE FULL CLOSURES SHOWN ON THIS SHEET SHALL ENTAIL ONLY FIFTEEN (15) WORKING DAYS. ALL CONCRETE CURB AND PAVEMENT BETWEEN THIRD AND MILL STREETS SHALL BE COMPLETED BEFORE STAGE 2 IS BEGUN.
3. ALL TRENCHES AND EXCAVATIONS FOR DRAINAGE ITEMS SHALL BE BACKFILLED AND COMPACTED FLUSH WITH THE EXISTING SURFACE AT THE END OF EACH DAY'S OPERATION EXCEPT AT THE LOCATION WHERE WORK WILL CONTINUE THE FOLLOWING WORK DAY.
4. WHEN OBSTACLE OR EXCAVATION IS >100' IN LENGTH, LIGHTS SHALL BE STEADY BURN, OTHERWISE, LIGHTS SHALL BE FLASHING.
5. BARRICADES AND DRUMS SHOWN DO NOT REPRESENT THE FULL NUMBER REQUIRED TO DELINEATE NOTED AREAS. THE CONTRACTOR SHALL BE RESPONSIBLE FOR PROVIDING THE NECESSARY NUMBER REQUIRED FOR THE PARTICULAR AREA.

FILE NAME = 6185-stage1c.dgn	USER NAME = USERDESCR.	DESIGNED - HMG: CRW & EDW	REVISED -	<b>STATE OF ILLINOIS DEPARTMENT OF TRANSPORTATION</b>	<b>CONSTRUCTION STAGING: STAGE 1C</b>	F.A. RTE.	SECTION	COUNTY	TOTAL SHEETS	SHEET NO.	
H:\6185\Water\ed\moore\Phase1\CAD\ROAD	DAY:6185-stage1c.dgn	DRAWN - HMG: CRW, EDW, & KOJ	REVISED -			9315	06-00032-03-PV	MONROE	93	25	
PLOT SCALE = 3/22/2012	PLOT DATE = 3/22/2012	CHECKED - HMG: CRW	REVISED -			CONTRACT NO. 97488					
		DATE -	REVISED -			FED. ROAD DIST. NO. ILLINOIS FED. AID PROJECT					
						SCALE: SHEET NO. OF SHEETS STA. TO STA.					

HMG ENGINEERS, INC., 1075 LAKE ROAD, PO BOX 70, CARLYLE, IL 62231 PHONE (618) 594-3711 WWW.HMGENGINEERS.COM