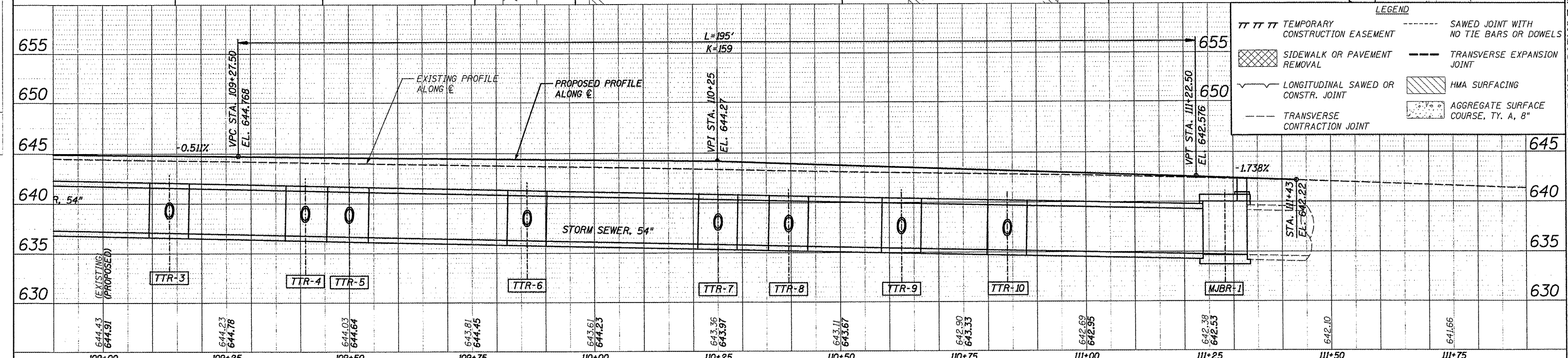
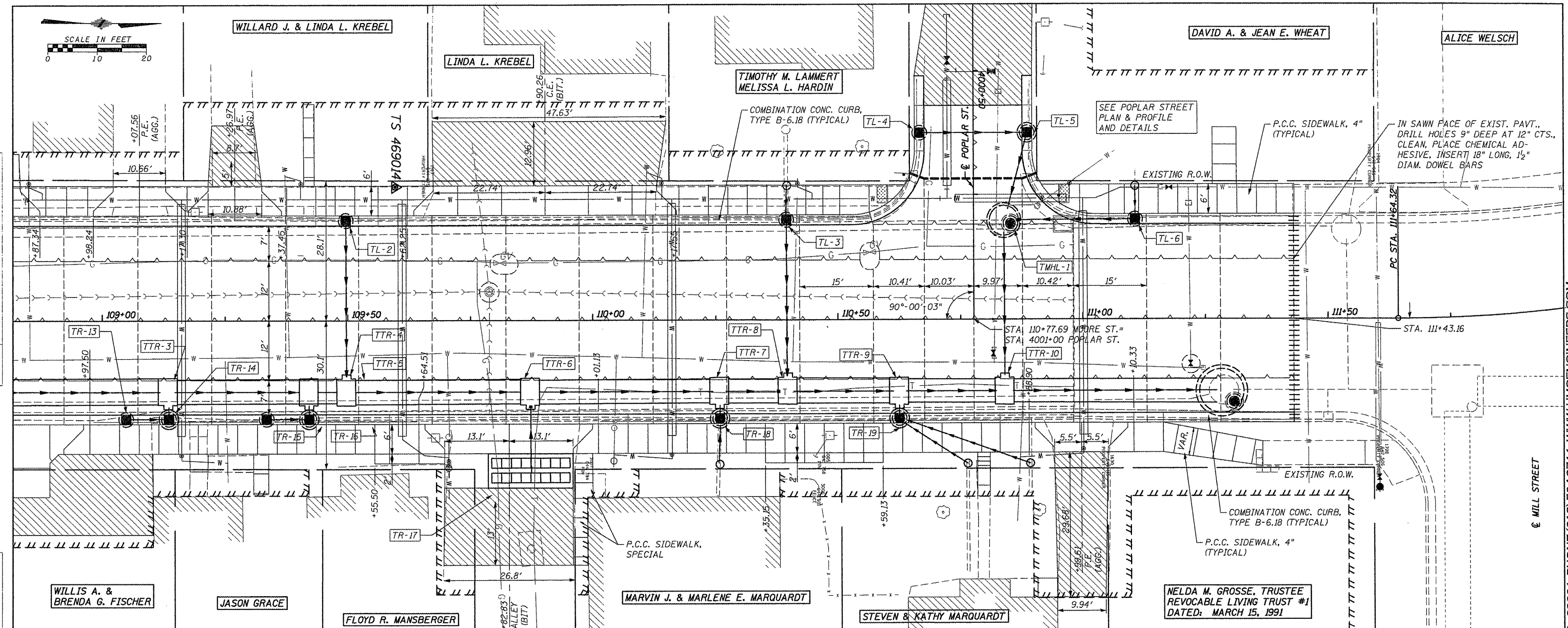




DATE	
BY	
REVISIONS	
NO.	
DESCRIPTION	
DATE	
BY	
REVISIONS	
NO.	
DESCRIPTION	
DATE	
BY	

DATE	
BY	
REVISIONS	
NO.	
DESCRIPTION	
DATE	
BY	
REVISIONS	
NO.	
DESCRIPTION	
DATE	
BY	



LEGEND

TTTT	TEMPORARY CONSTRUCTION EASEMENT	---	SAWED JOINT WITH NO TIE BARS OR DOWELS
[Cross-hatched]	SIDEWALK OR PAVEMENT REMOVAL	---	TRANSVERSE EXPANSION JOINT
~	LONGITUDINAL SAWED OR CONSTR. JOINT	[Diagonal lines]	HMA SURFACING
---	TRANSVERSE CONTRACTION JOINT	[Dotted]	AGGREGATE SURFACE COURSE, TY. A, 8"

FILE NAME = 61B5-pp4.dgn	USER NAME = USERDESCR.	DESIGNED - HMG: CRW & EDW	REVISED -	STATE OF ILLINOIS DEPARTMENT OF TRANSPORTATION PLAN & PROFILE: STA. 108+90 - STA. 111+90 F.A.U. 9315 (MOORE ST.)	F.A. R.T.E. = 9315	SECTION = 06-00032-03-PV	COUNTY = MONROE	TOTAL SHEETS = 93	SHEET NO. = 19	
PLT SCALE = 1/8" = 1' IN.	PLT DATE = 3/22/2012	DRAWN - HMG: CRW, EDW, & KOJ	REVISED -		SCALE: SHEET NO. OF SHEETS STA. TO STA.	FED. ROAD DIST. NO. = ILLINOIS FED. AID PROJECT	CONTRACT NO. 97488			
		CHECKED - HMG: CRW	REVISED -							
		DATE =	REVISED -							

HMG ENGINEERS, INC., 1075 LAKE ROAD, PO BOX 70, CARLYLE, IL 62231 PHONE (618) 594-3711 WWW.HMGENGINEERS.COM