

DATE: _____ BY: _____

REVIEWED: _____

PLANNING: _____

DESIGNED: _____

DRAWN: _____

CHECKED: _____

DATE: 5/28/2012

DATE: _____ BY: _____

REVIEWED: _____

PLANNING: _____

DESIGNED: _____

DRAWN: _____

CHECKED: _____

DATE: 5/28/2012

LEGEND

- TTTT TEMPORARY CONSTRUCTION EASEMENT
- XXXX SIDWALK OR PAVEMENT REMOVAL
- ~ LONGITUDINAL SAWED OR CONSTR. JOINT
- TRANSVERSE CONTRACTION JOINT
- SAWED JOINT WITH NO TIE BARS OR DOWELS
- TRANSVERSE EXPANSION JOINT
- HMA SURFACING
- AGGREGATE SURFACE COURSE, TY. A, 8"

CITY OF WATERLOO

SCALE IN FEET: 0 10 20

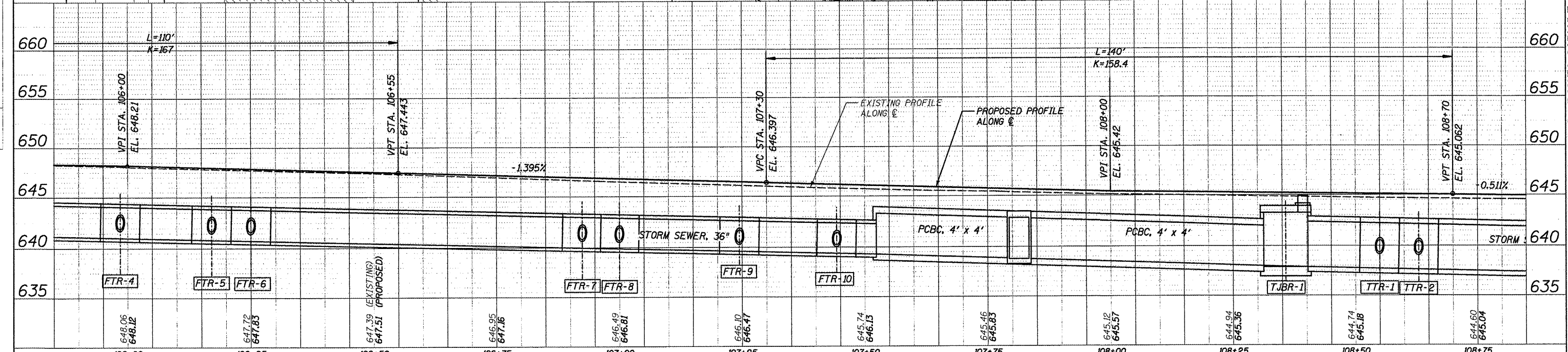
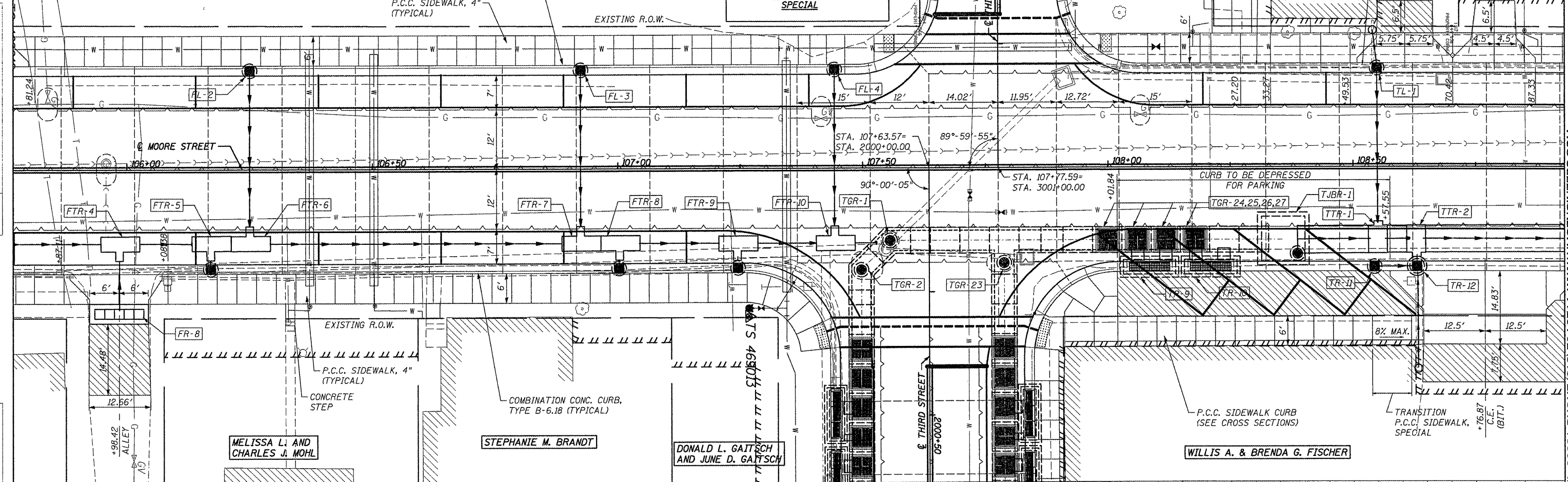
EXIST. BUILDING

DETAIL P.C.C. SIDEWALK SPECIAL

COMBINATION CONC. CURB, TYPE B-6.18 (TYPICAL)

P.C.C. SIDEWALK, 4" (TYPICAL)

EXISTING R.O.W.



FILE NAME = 6185-pp3.dgn	USER NAME = JUSERDESCR	DESIGNED - HMG: CRW & EDW	REVISOR -	DATE	5/28/2012
DRAWN - HMG: CRW, EDW, & KOJ	CHECKED - HMG: CRW	DATE	5/28/2012		

STATE OF ILLINOIS
DEPARTMENT OF TRANSPORTATION

PLAN & PROFILE: STA. 105+80 - STA. 108+85
F.A.U. 9315 (MOORE ST.)

SCALE: _____ SHEET NO. _____ OF _____ SHEETS STA. _____ TO STA. _____

F.A. RTE. 9315	SECTION 06-00032-03-PV	COUNTY MONROE	TOTAL SHEETS 93	SHEET NO. 18
FED. ROAD DIST. NO. ILLINOIS FED. AID PROJECT				CONTRACT NO. 97488

HMG ENGINEERS, INC.: 1075 LAKE ROAD, PO BOX 70, CARLYLE, IL 62231 PHONE (618) 594-3711 WWW.HMGENGINEERS.COM