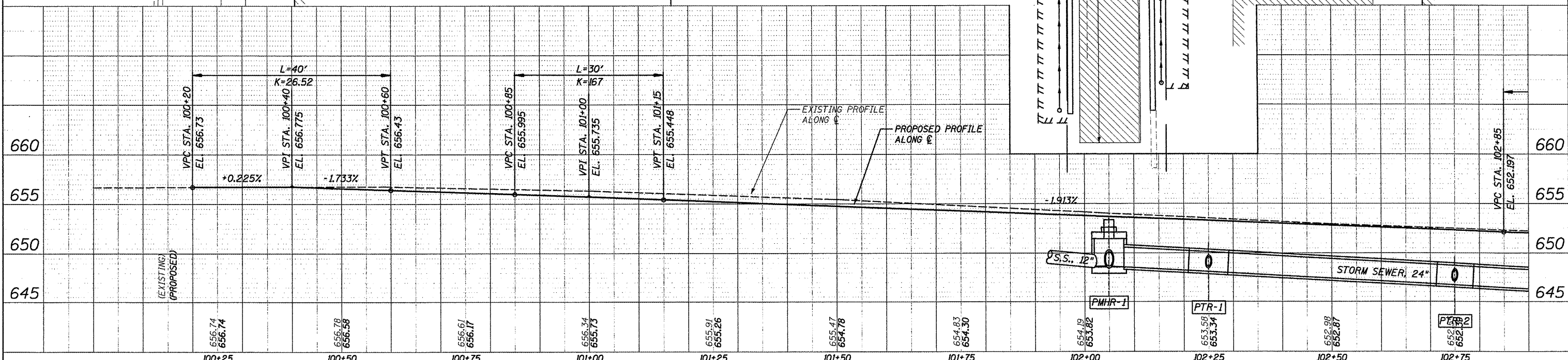
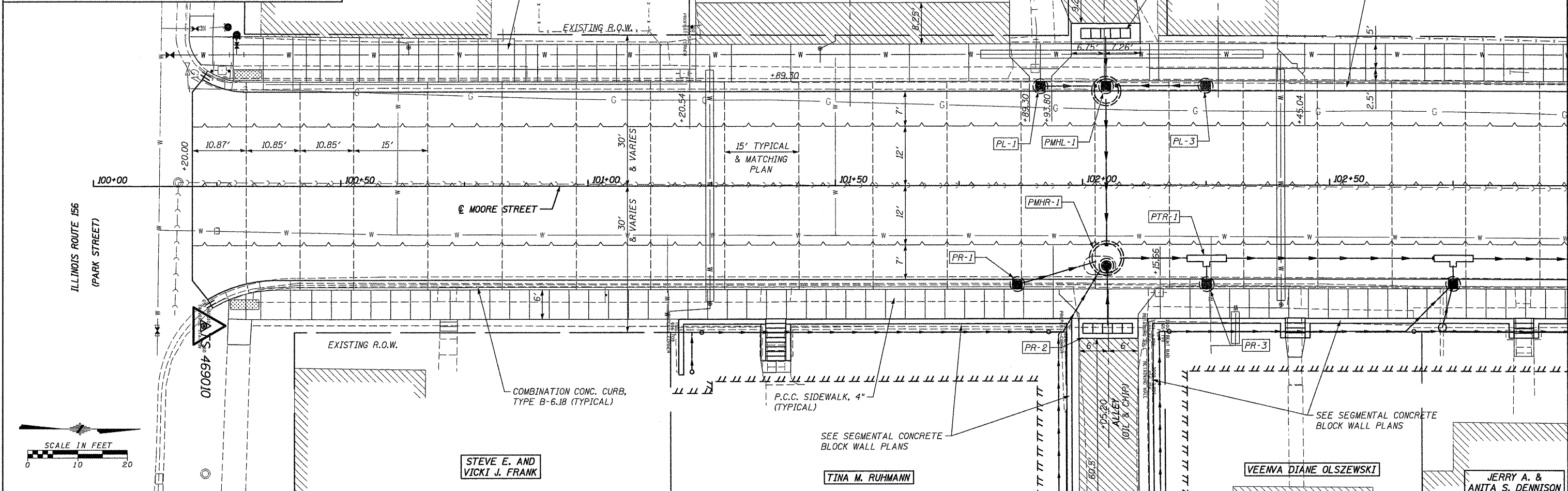


- LEGEND**
- TEMPORARY CONSTRUCTION EASEMENT
 - SIDWALK OR PAVEMENT REMOVAL
 - LONGITUDINAL SAWED OR CONSTR. JOINT
 - TRANSVERSE CONTRACTION JOINT
 - SAWED JOINT WITH NO TIE BARS OR DOWELS
 - TRANSVERSE EXPANSION JOINT
 - HMA SURFACING
 - AGGREGATE SURFACE COURSE, TY. A, 8"

| | |
|------|----|
| DATE | BY |
| DATE | BY |
| DATE | BY |
| DATE | BY |
| DATE | BY |
| DATE | BY |
| DATE | BY |
| DATE | BY |
| DATE | BY |
| DATE | BY |
| DATE | BY |
| DATE | BY |

| | |
|------|----|
| DATE | BY |
| DATE | BY |
| DATE | BY |
| DATE | BY |
| DATE | BY |
| DATE | BY |
| DATE | BY |
| DATE | BY |
| DATE | BY |
| DATE | BY |
| DATE | BY |
| DATE | BY |



FILE NAME = 6185-pp1.dgn
 USER NAME = JUSERDESCR
 DESIGNED - HMG: CRW & EDW
 DRAWN - HMG: CRW, EDW, & KOJ
 CHECKED - HMG: CRW
 PLOT SCALE = 1/8" = 1' / IN.
 PLOT DATE = 2/28/2012

| | | |
|-----------|----------|---------|
| USER NAME | DESIGNED | REVISOR |
| DATE | DATE | DATE |
| DATE | DATE | DATE |
| DATE | DATE | DATE |

**STATE OF ILLINOIS
 DEPARTMENT OF TRANSPORTATION**

**PLAN & PROFILE: STA. 100+00 - STA. 102+95
 F.A.U. 9315 (MOORE ST.)**

SCALE: SHEET NO. OF SHEETS STA. TO STA.

| | | | |
|---------------------|----------------|---------------------------|-------------------------|
| F.A. RTE. | SECTION | COUNTY | TOTAL SHEET SHEETS, NO. |
| 9315 | 06-00032-03-FV | MONROE | 93 / 16 |
| FED. ROAD DIST. NO. | | ILLINOIS FED. AID PROJECT | CONTRACT NO. 97488 |

HMG ENGINEERS, INC., 1075 LAKE ROAD, PO BOX 70, CARLYLE, IL 62231 PHONE (618) 594-3711 WWW.HMGENGINEERS.COM