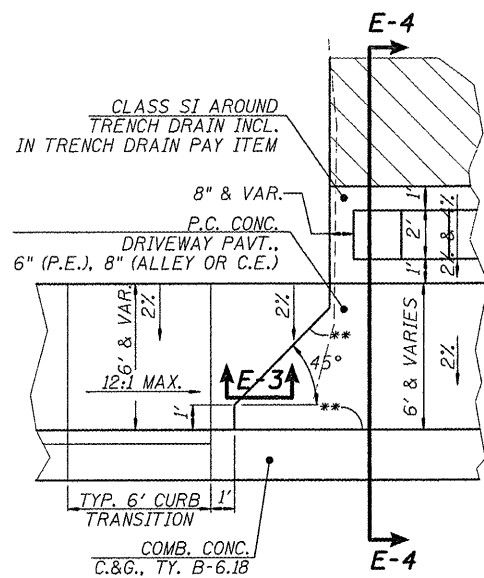


PLAN-1

SEE PLAN & PROFILES FOR LOCATION OF TROWELLED JOINTS IN P.C. DRIVEWAY PAVEMENTS.

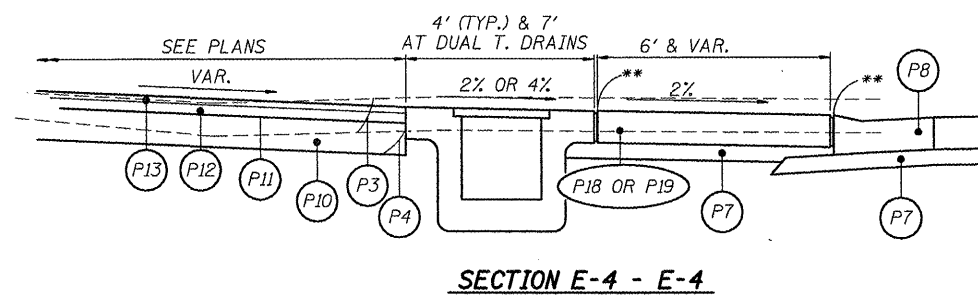
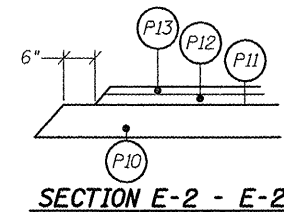
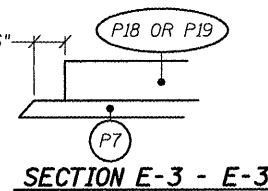
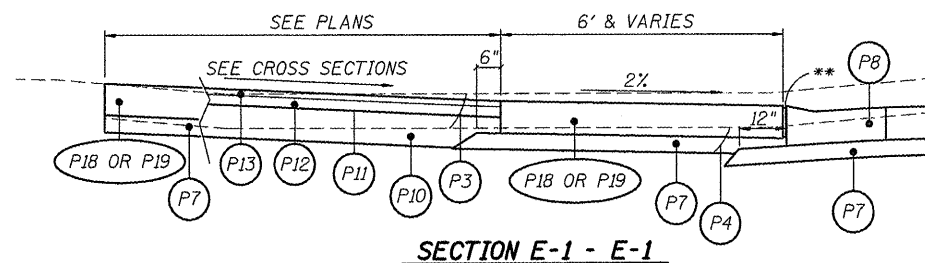


PLAN-2

SHOWING TREATMENTS AT TRENCH DRAINS. SEE PLAN & PROFILES FOR LOCATION OF TROWELLED JOINTS IN P.C. DRIVEWAY PAVEMENTS.

ENTRANCE SCHEDULE

LOCATION	TYPE	SUB-BASE GRANULAR MATERIAL, TYPE A 4"	SUB-BASE GRANULAR MATERIAL, TYPE A 8"	PC CONC DRIVEWAY PAVEMENT, 6"	PC CONC DRIVEWAY PAVEMENT, 8"	BITUMINOUS MATERIALS (PRIME COAT)	AGGREGATE (PRIME COAT)	HMA SURFACE COURSE, MIX "D" N70 (2")	HMA BINDER COURSE, IL-19.0, N70 (2.25")	AGGREGATE SURFACE COURSE, TYPE A 8"	
LT/RT STATION		SQ YD	SQ YD	SQ YD	SQ YD	GALLON	TON	TON	TON	SQ YD	
MOORE STREET											
LT	101+53.00	CE	47.6	59.8	-	54.3	26.1	0.2	6.5	7.4	
LT	102+04.55	ALLEY	12.9	17.5	-	14.6	7.9	0.1	1.8	2.1	
RT	102+05.20	ALLEY	9.0	93.1	-	10.5	41.9	0.4	9.2	10.3	
LT	102+27.54	CE	25.4	-	-	28.1	-	-	-	-	
LT	105+63.94	CE	17.2	-	-	18.7	-	-	-	5.4	
RT	105+98.42	ALLEY	9.0	22.5	-	10.3	10.1	0.1	2.2	2.5	
RT	108+25.00	PARKING	-	54.2	-	24.4	0.2	6.7	7.5	-	
LT	108+60.67	PE	8.9	10.5	10.3	-	4.7	-	0.9	1.0	
RT	108+76.87	CE	45.0	64.3	-	48.0	28.9	0.3	6.8	7.6	
LT	108+78.86	PE	14.4	-	14.8	-	-	-	-	-	
LT	109+07.56	PE	9.0	-	9.8	-	-	-	-	-	
LT	109+26.97	PE	8.6	16.5	9.9	-	7.4	0.1	1.5	1.7	
RT	109+82.83	ALLEY	24.4	50.8	-	27.0	22.9	0.2	5.2	5.8	
LT	109+90.26	CE	27.8	69.5	-	33.0	31.3	0.3	7.5	8.5	
RT	110+99.61	PE	8.6	41.0	10.0	-	18.5	0.2	3.9	4.4	
FOURTH STREET											
LT	999+27.00	AREA	-	-	-	-	-	-	-	6.9	
RT	999+50.00	PARKING	-	51.6	-	-	23.2	0.2	6.1	6.9	
THIRD STREET											
RT	2000+91.40	PE	15.3	-	16.3	-	-	-	-	-	
TOTALS			283.1	551.3	71.1	244.5	247.3	2.162	58.3	65.7	18.2
USE			283.1	551.3	71.1	244.5	247	2.3	58.3	65.7	18.2



SECTION LEGEND

- (P3) REMOVAL AND DISPOSAL OF UNSUITABLE MATERIAL
- (P4) EARTH EXCAVATION
- (P7) SUBBASE GRANULAR MATERIAL, TYPE A, 4"
- (P8) COMBINATION CONCRETE CURB AND GUTTER, TYPE B-6.18
- (P10) SUBBASE GRANULAR MATERIAL, TYPE A, 8"
- (P11) BITUMINOUS MATERIALS (PRIME COAT) + AGGREGATE (PRIME COAT)
- (P12) HOT-MIX ASPHALT BINDER COURSE, IL-19.0, N70
- (P13) HOT-MIX ASPHALT SURFACE COURSE, MIX "D", N70
- (P18) PORTLAND CEMENT CONCRETE DRIVEWAY PAVEMENT, 6"
- (P19) PORTLAND CEMENT CONCRETE DRIVEWAY PAVEMENT, 8"
- ** EXPANSION JOINTS PER STANDARD SPECIFICATIONS

HMG ENGINEERS, INC., 1075 LAKE ROAD, PO BOX 70, CARLYLE, IL 62231 PHONE (618) 594-9711 WWW.HMGENGINEERS.COM