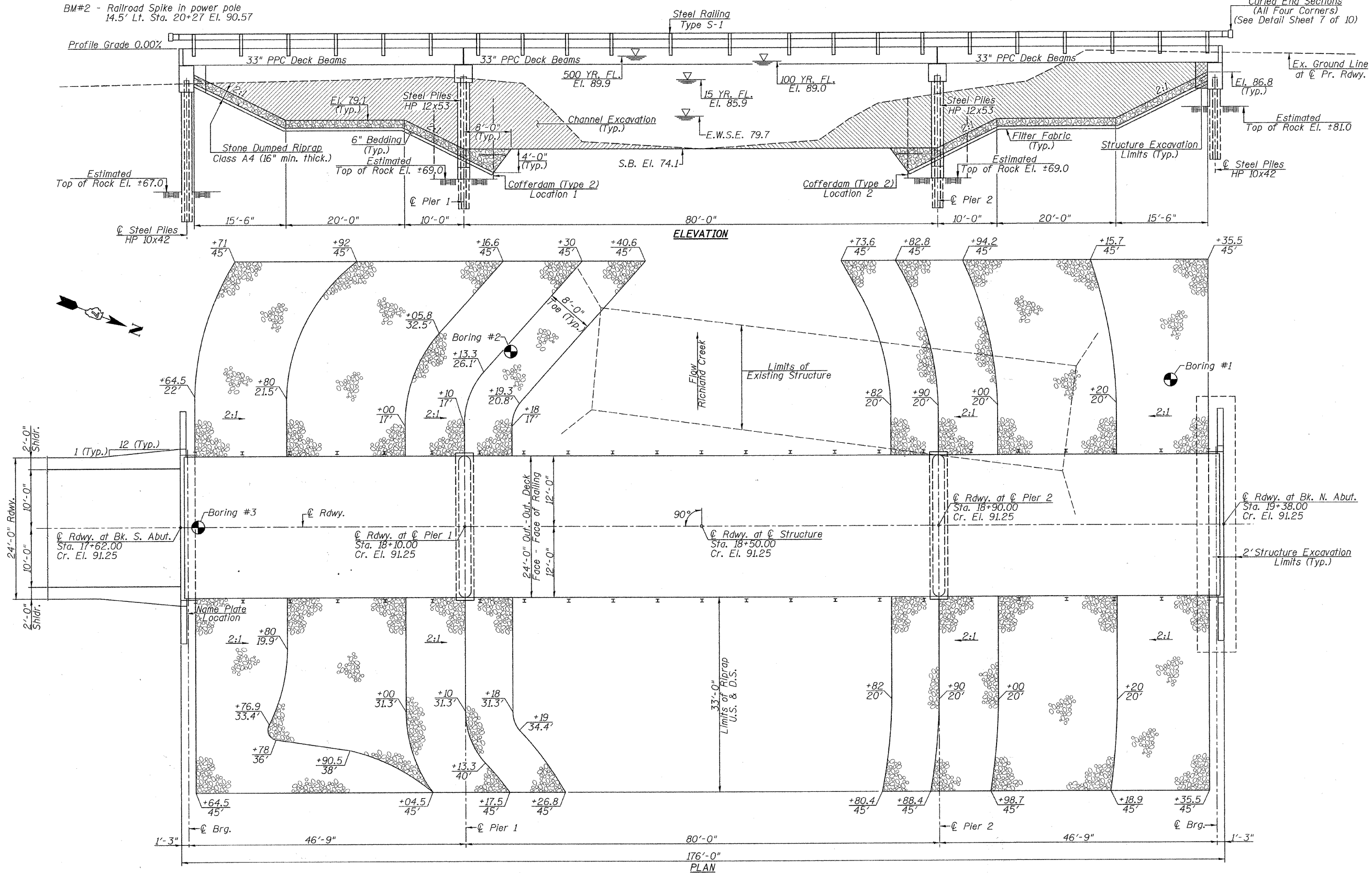


Existing Structure: Two span timber deck on steel stringers supported by closed timber abutments with timber wingwalls and one timber pile bent pier. ±80'-0" Bk.-Bk. Abutments, ±17'-0" Out.-Out. Deck. Steel Railing, 0° Skew.  
Existing Structure No. 087-3187

Benchmarks: BM#1 - 60d Nail & Washer in tree  
27' Lt. Sta. 13+74 El. 100.00 (Assumed)

BM#2 - Railroad Spike in power pole  
14.5' Lt. Sta. 20+27 El. 90.57



FILE NAME =	USER NAME =	DESIGNED -	REVISED -	 <b>Allen Henderson &amp; Associates, Inc.</b> Civil and Structural Engineers Springfield, IL. 62703 Phone: (217)544-8033 IL Design Firm No. 184-001907	<b>GENERAL PLAN &amp; ELEVATION</b>		T.R. RTE.	SECTION	COUNTY	TOTAL SHEETS	SHEET NO.
PLOT SCALE =	DRAWN -	REVISED -	272				10-03114-00-BR	SHELBY	27	7	
PLOT DATE =	CHECKED -	REVISED -			SHEET NO. 1 OF 10 SHEETS		CONTRACT NO. 95688		ILLINOIS FED. AID PROJECT		