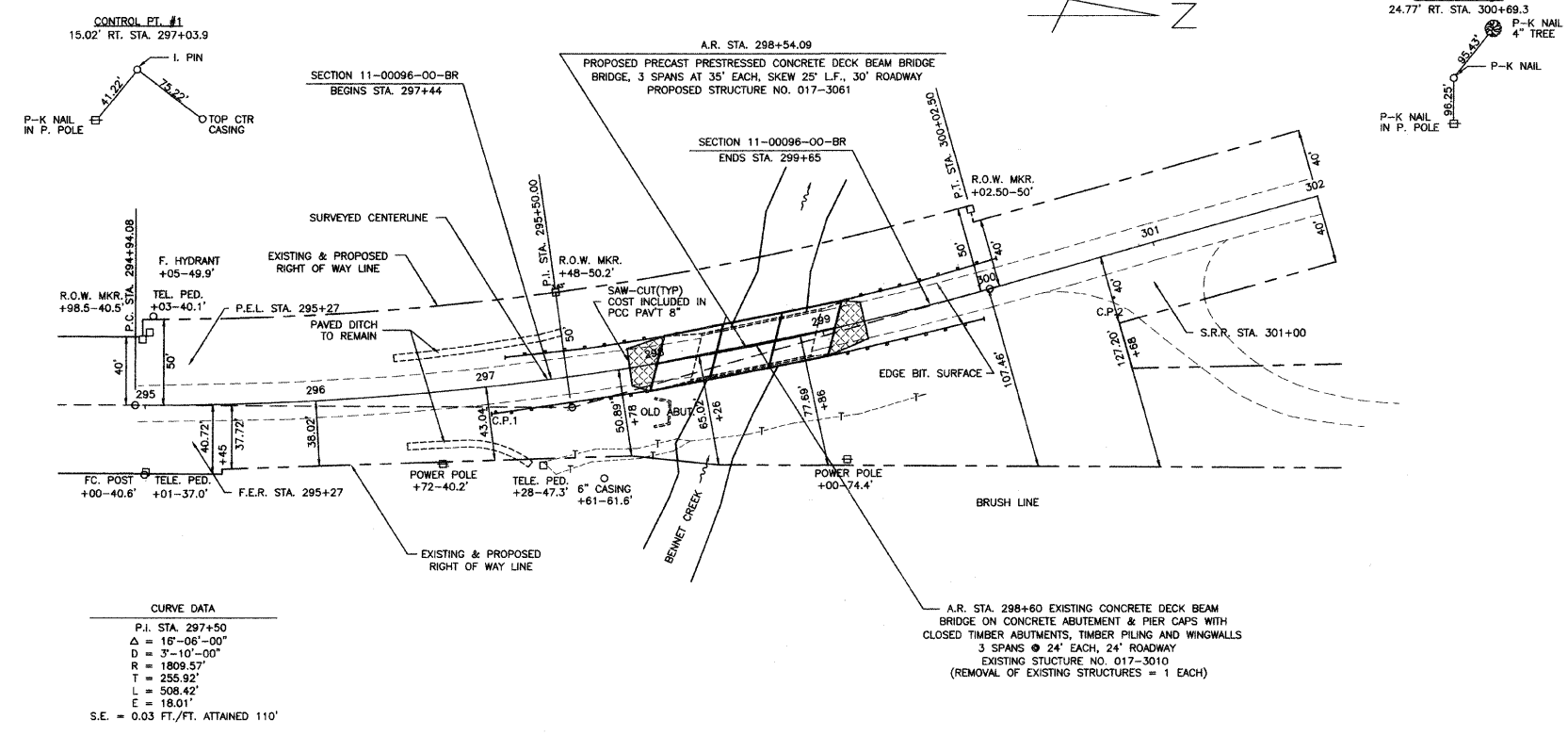


NOTE: EXISTING HOT MIX ASPHALT SURFACE SHALL BE SAW-CUT FULL DEPTH.



HOT-MIX ASPHALT SURFACE COURSE, MIX "C", N70 STA. 297+84 TO STA. 299+25 = 55 TON (SEE TYPICAL X-SECTION ABOVE)		EARTHWORK QUANTITIES EARTH EXCAVATION = 4 CU.YD. EARTH EXCAVATION ADJ. 25% = 3 CU.YD. CHANNEL EXCAVATION = 100 CU.YD. CHANNEL EXCAVATION ADJ. 25% = 75 CU.YD. EMBANKMENT (SHLD. WID.) = 250 CU.YD. FURNISHED EXCAVATION = 172 CU.YD.		TRAF. BAR. TERM. TY. 1 SPEC. (TANGENT) RT. 297+00 TO 297+50 = 1 EACH LT. 297+14 TO 297+64 = 1 EACH RT. 299+44 TO 299+94 = 1 EACH LT. 299+58 TO 300+08 = 1 EACH TOTAL = 4 EACH		TRAF. BAR. TERM. TY. 6A RT. 297+50 TO 297+94 = 1 EACH LT. 297+64 TO 298+08 = 1 EACH RT. 299+00 TO 299+44 = 1 EACH LT. 299+14 TO 299+58 = 1 EACH TOTAL = 4 EACH		P.C.C. PAVEMENT 8" STA. 297+84 TO 298+01 = 51 SQ. YD. STA. 299+07 TO 299+25 = 51 SQ. YD. TOTAL = 102 SQ. YD.		B.M. TOP S.E. CORNER HOWL 159' RT. 303+40 ELEV. 467.65	
LEVELING BINDER (MACHINE METHOD), N70 STA. 297+84 TO STA. 299+25 = 19 TON (SEE TYPICAL X-SECTION ABOVE)										POROUS GRANULAR EMBANKMENT SOUTH ABUTMENT = 48 CU. YD. NORTH ABUTMENT = 48 CU. YD. TOTAL = 96 CU. YD.	
SEEDING, CLASS 2 (SPECIAL) STA. 296+62 TO STA. 300+46 = 0.03 ACRES										PAVEMENT REMOVAL STA. 297+84 TO 298+24 = 93 SQ. YD. STA. 298+96 TO 299+25 = 68 SQ. YD. TOTAL = 161 SQ. YD.	
PERIMETER EROSION BARRIER LOCATE ALONG TOE OF CHANNEL SLOPE 15 FEET @ EACH CORNER OF BRIDGE = 60 FOOT											
UTILITIES ELECTRIC: NORRIS ELECTRIC CO-OP 8543 N. STATE HWY. 130 NEWTON, IL. 62448 618-783-8765 TELEPHONE: FRONTIER 225 E. CHESTNUT ST. OLNEY, IL. 62450 618-395-6189 WATER: HARDINVILLE WATER CO. 4440 N. 575TH ROBINSON, IL. 62454 618-557-3556											
										100 YR. H.W.E. ELEV. 467.3 20 YR. H.W.E. ELEV. 466.6	
										EXISTING CENTERLINE GRADE PROPOSED CENTERLINE GRADE	
										CHANNEL EXC.	
										F.L. 458.8 TOP CTR BR 475.45 TOP H.M.A. 474.25 TOP H.M.A. 474.08 TOP H.M.A. 473.89 TOP H.M.A. 474.08 TOP H.M.A. 473.05 TOP H.M.A. 473.15	
										485.11 483.58 482.79 481.29 480.24 479.79 479.73 478.15 478.23 478.97 477.15 476.75 477.00 476.81 476.79 474.44 473.37 474.08 473.05 473.15 471.96 470.86 469.92 468.54	
										294 295 296 297 298 299 300 301 302	