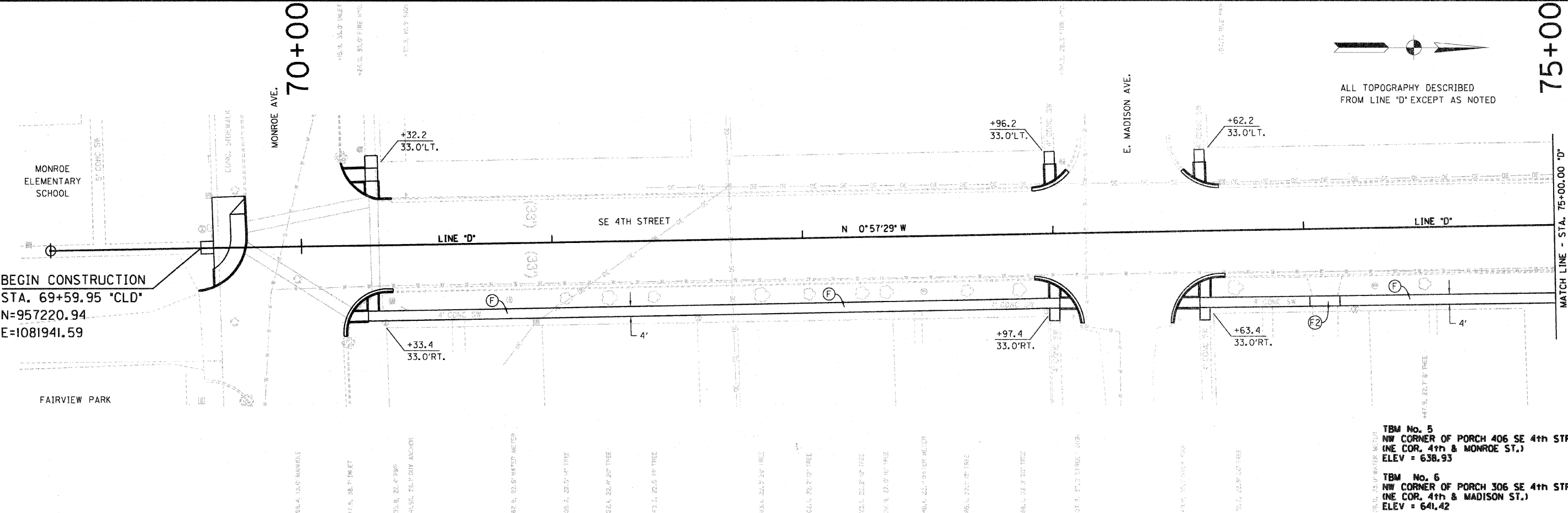


75+00



ALL TOPOGRAPHY DESCRIBED FROM LINE 'D' EXCEPT AS NOTED



BEGIN CONSTRUCTION
 STA. 69+59.95 "CLD"
 N=957220.94
 E=1081941.59

TBM No. 5
 NW CORNER OF PORCH 406 SE 4th STREET
 (NE COR. 4th & MONROE ST.)
 ELEV = 638.93

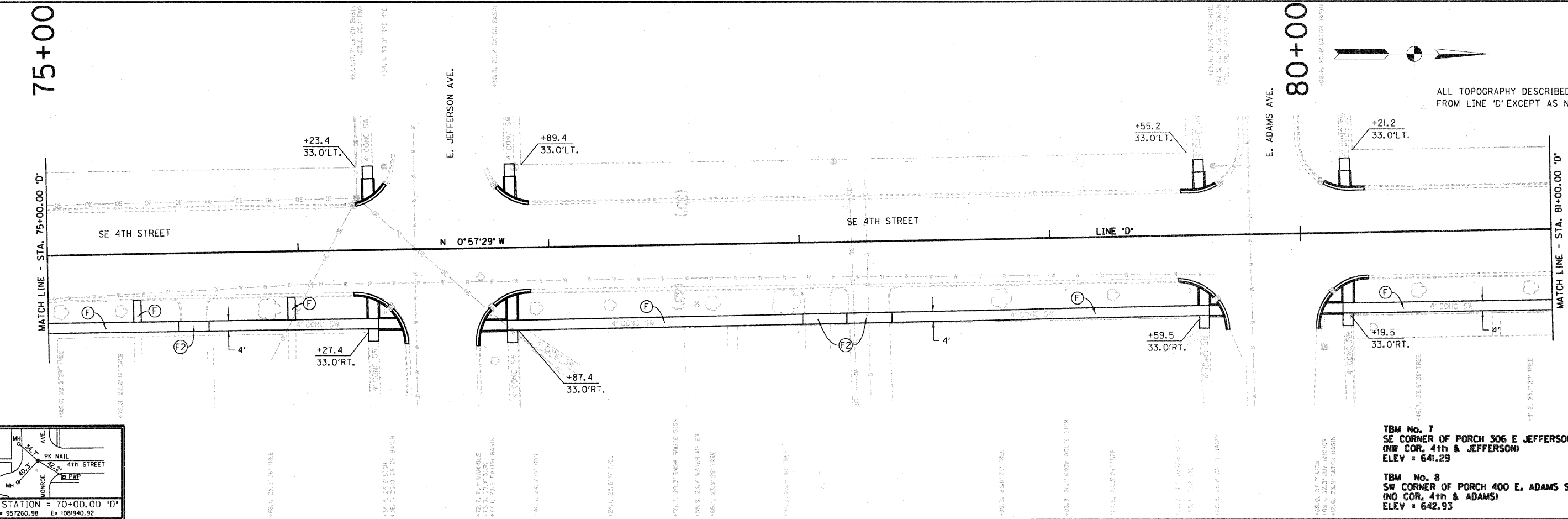
TBM No. 6
 NW CORNER OF PORCH 306 SE 4th STREET
 (NE COR. 4th & MADISON ST.)
 ELEV = 641.42

MATCH LINE - STA. 75+00.00 "D"

75+00



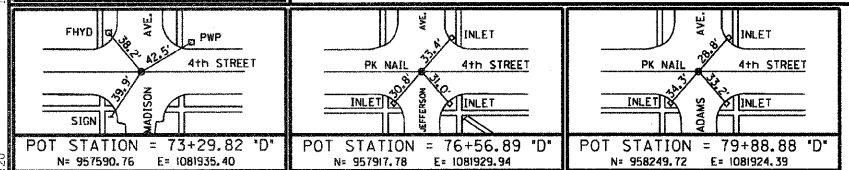
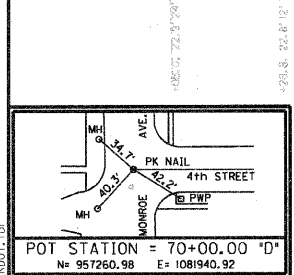
ALL TOPOGRAPHY DESCRIBED FROM LINE 'D' EXCEPT AS NOTED



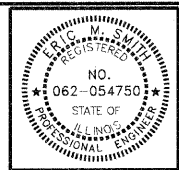
TBM No. 7
 SE CORNER OF PORCH 306 E JEFFERSON STREET
 (NW COR. 4th & JEFFERSON)
 ELEV = 641.29

TBM No. 8
 SW CORNER OF PORCH 400 E. ADAMS STREET
 (NO COR. 4th & ADAMS)
 ELEV = 642.93

MATCH LINE - STA. 81+00.00 "D"



- (F) PORTLAND CEMENT CONCRETE SIDEWALK 4 INCH
- (F2) PORTLAND CEMENT CONCRETE SIDEWALK 6 (OR) 8 INCH (SEE DETAILS FOR DRIVES AND ALLEYS)
- (26U) SEEDING, CLASS IB
- (R) CURB RAMP, TYPE #



RECOMMENDED FOR APPROVAL	<i>Eric M. Ant</i>	DATE	4/19/12
DESIGNED:	DWN	DRAWN:	DWN
CHECKED:	JAK	CHECKED:	RSH

ILLINOIS
 DEPARTMENT OF TRANSPORTATION

PLAN & PROFILE SHEET
 STA. 69+00.00 TO 81+00.00 "D"

HORIZONTAL SCALE	BRIDGE FILE
1" = 20'	
VERTICAL SCALE	SECTION NO.
	10-00030-00-SW
SURVEY BOOK	SHEETS
	7 of 33
CONTRACT	PROJECT
95676	2007-213

C:\Users\nobles\2007-213-5\Codev_SRTS\Design\Cadd\Plan 6900-75000.dgn
 4/19/2012 REVISION 2.0
 PDF: P1+ 12:38:31 PM
 INDOT-120