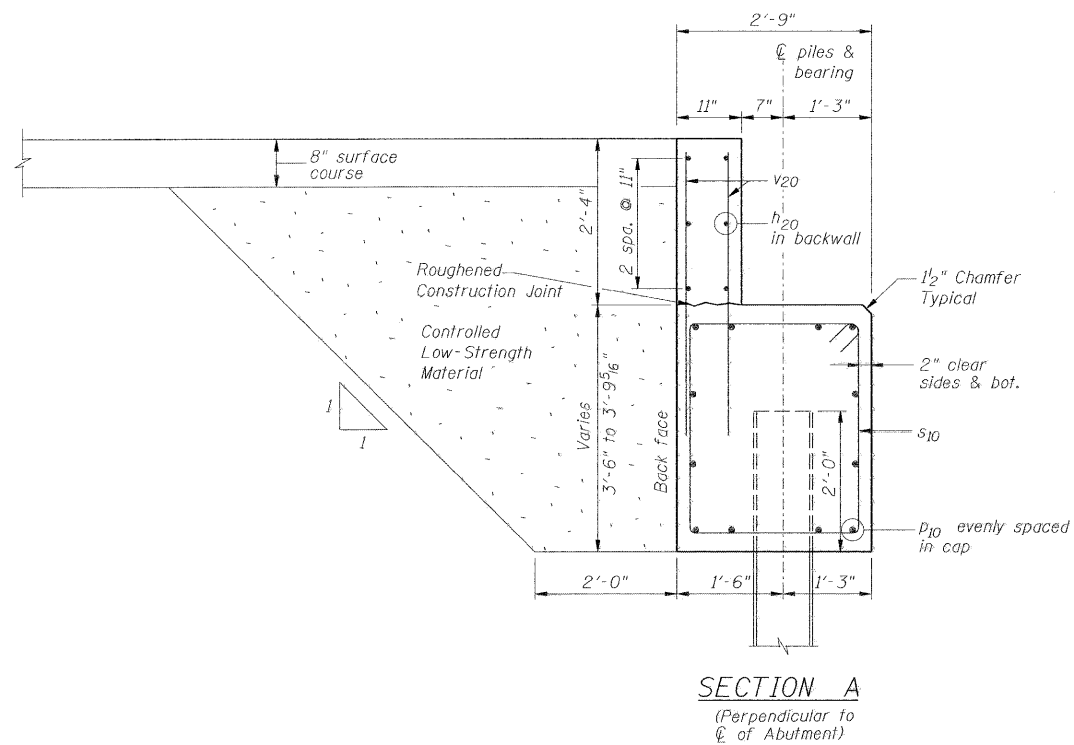
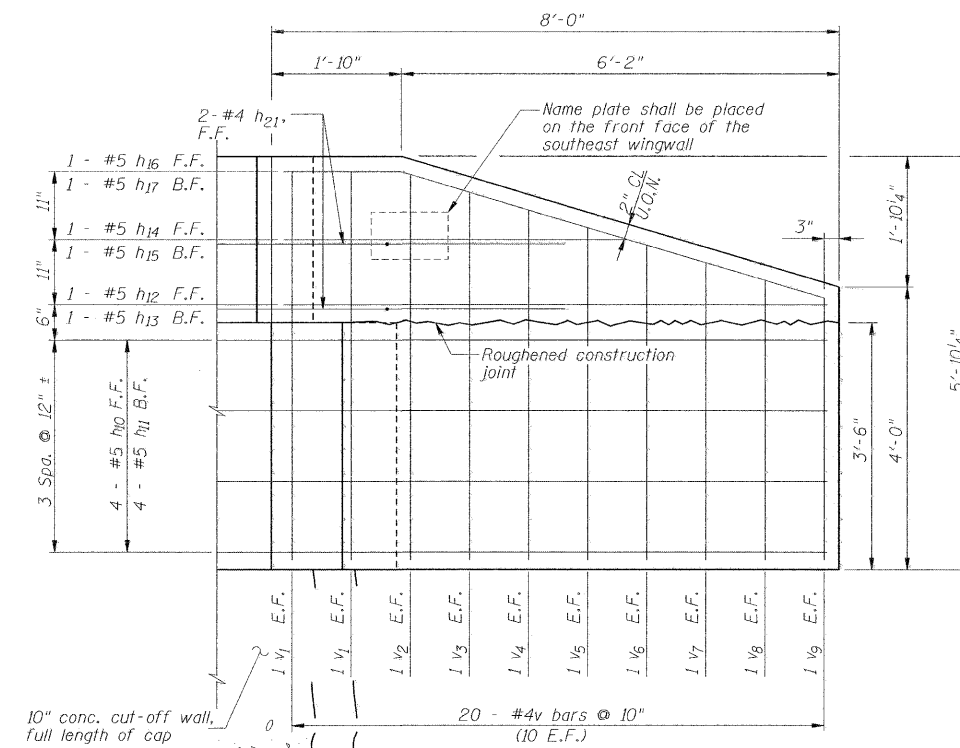


ROUTE NO.	SECTION	COUNTY	TOTAL SHEETS	SHEET NO.
TR 16	*	Vermilion	12	10
FED. ROAD DIST. NO. 7		ILLINOIS FED. AID PROJECT		



SECTION A
(Perpendicular to centerline of Abutment)



ELEV. B-B

Tops of wingwalls shall be poured after beams are in place.

Backwall steel is not shown for clarity.

DSGN	K.J. Hoffmann				
DR	K.J. Hoffmann				
CHK	J.R. Wolf				
APVD	J.A. Fraunhoffer	NO.	DATE	REVISION	BY



FRAUENHOFFER & ASSOCIATES
A division of Engineering Resource Associates, Inc.
Consulting Engineers, Scientists, & Surveyors

3002 CROSSING COURT
CHAMPAIGN, IL 61822
PHONE (217) 351-6268
FAX (217) 355-1902

ABUTMENT DETAILS (SHEET 2 OF 2)

TR16 (170E) OVER BRANCH OF PIGEON CREEK
SEC 10-02146-00-BR
VERMILION COUNTY

SHEET	10
DWG NO.	11050ABT.dgn
DATE	DEC 2011
PROJ NO.	11050