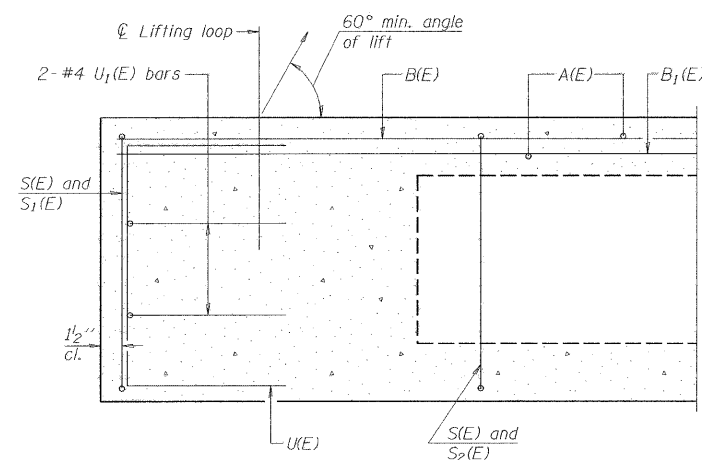
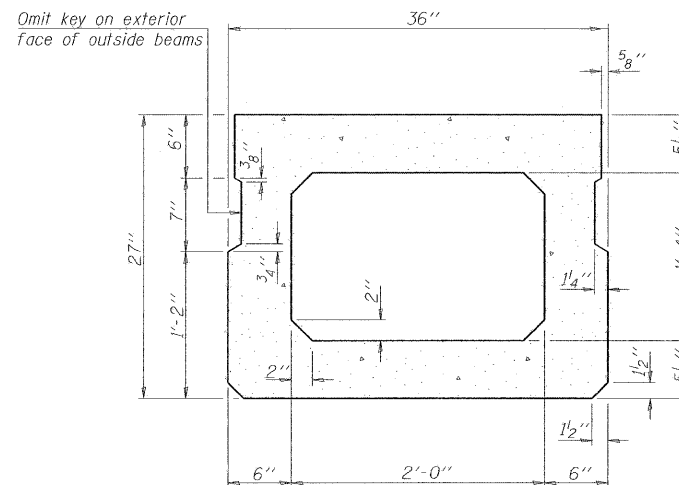


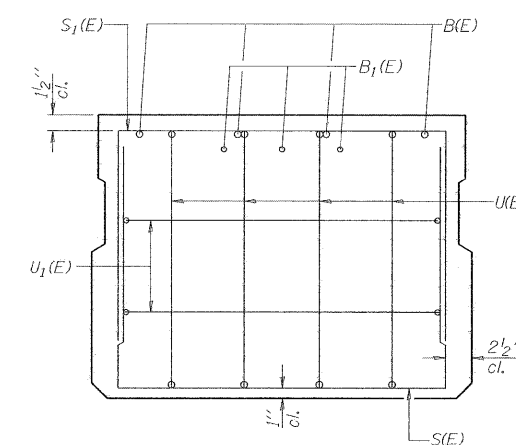
ROUTE NO.	SECTION	COUNTY	TOTAL SHEETS	SHEET NO.
TR 16	*	Vermilion	12	6
FED. ROAD DIST. NO. 7		ILLINOIS	FED. AID PROJECT-	



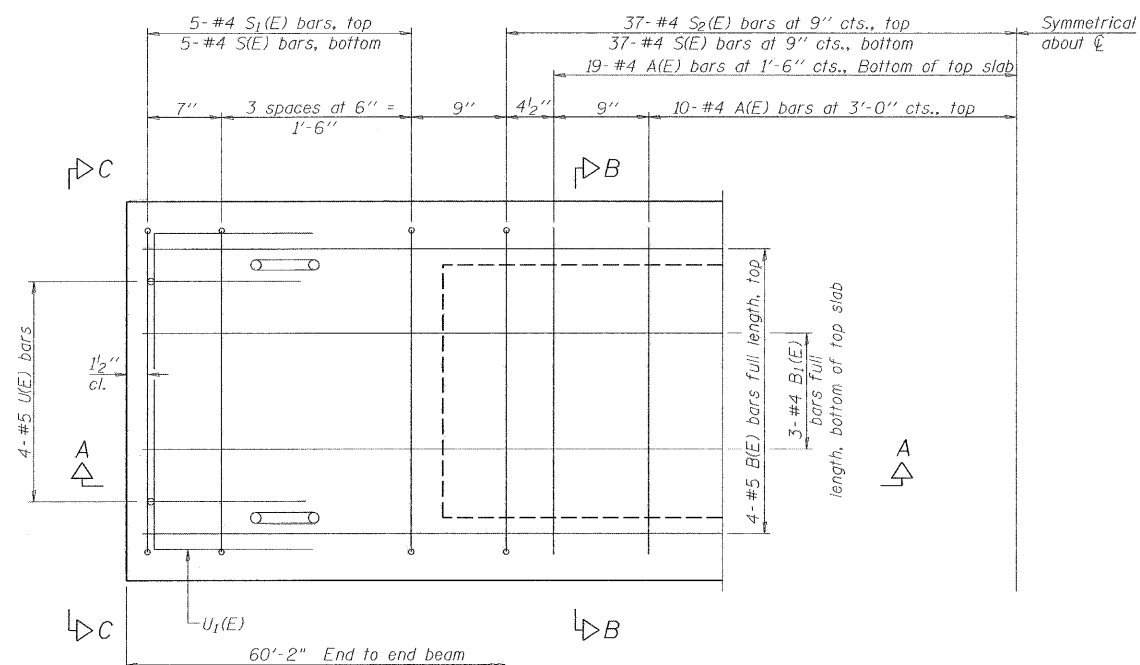
SECTION A-A



SECTION B-B  
(Showing dimensions)

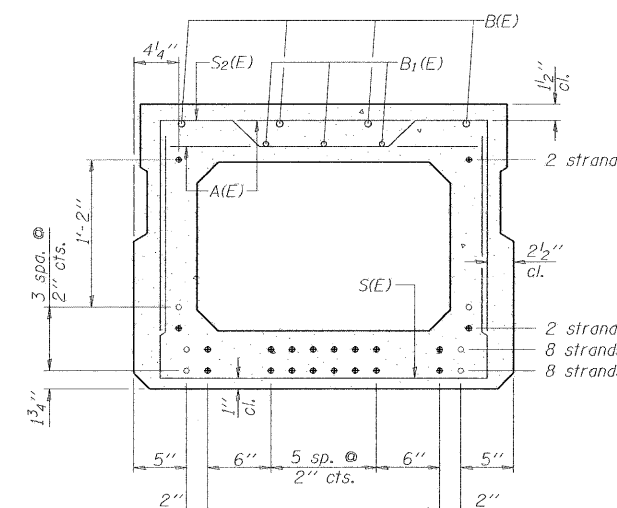


VIEW C-C



PLAN VIEW

Note: Spacing of S(E) and S<sub>2</sub>(E) bars may be adjusted up to 4" in the immediate area of the transverse tie diaphragms to miss the block outs for the transverse ties.

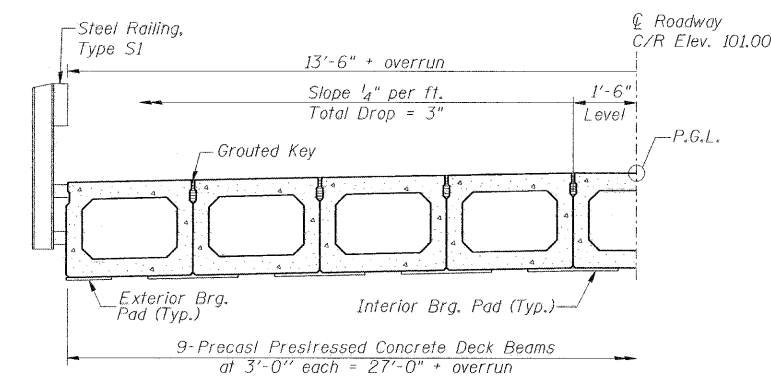


SECTION B-B

(Showing reinforcement and permissible strand locations)  
Note: Place the number of strands specified in each row symmetrically about the centerline of beam in the permissible strand locations shown.

**MINIMUM BAR LAP**

#4 bar = 2'-0"  
#5 bar = 2'-6"



HALF CROSS SECTION

**BAR LIST**  
**ONE BEAM ONLY**

(For information only)

Bar	No.	Size	Length	Shape
A(E)	58	#4	2'-7"	—
B(E)	16	#5	17'-9"	—
B <sub>1</sub> (E)	12	#4	17'-9"	—
S(E)	84	#4	6'-5"	┌┐
S <sub>1</sub> (E)	10	#4	5'-11"	┌┐
S <sub>2</sub> (E)	74	#4	6'-2"	┌┐
U(E)	8	#5	4'-6"	┌┐
U <sub>1</sub> (E)	4	#4	5'-0"	┌┐

Note: See sheet 2 of 2 for additional details and Bill of Material.

**27" x 36" PPC DECK BEAM**  
**STRUCTURE NO. 092-3450**

PD-2736-0 7-1-10

DSGN	J. Hoffmann				
DR	N.J. Liggett				
CHK	J.R. Wolf				
APVD	J.A. Fraunhoffer	NO.	DATE	REVISION	BY



**FRAUENHOFFER & ASSOCIATES**  
A Division of Engineering Resource Associates, Inc.  
Consulting Engineers, Scientists, & Surveyors

3002 CROSSING COURT  
CHAMPAIGN, IL 61822  
PHONE (217) 351-6268  
FAX (217) 355-1902

**SUPERSTRUCTURE DETAILS (SHEET 1 OF 2)**

TR16 (170E) OVER BRANCH OF PIGEON CREEK  
SEC 10-02146-00-BR  
VERMILION COUNTY

SHEET	6
DWG NO.	10050SUP.dgn
DATE	AUG 2011
PROJ NO.	10050